



THE MARYLAND-NATIONAL CAPITAL PARK AND PLANNING COMMISSION

Prince George's County

Maryland Department of Planning Annual Report

January 2012 through December 2012

Planning Board Briefing

Thursday, June 20, 2013

Agenda Item #11

Prepared by The Maryland-National Capital Park and Planning Commission

Countywide Planning Division, Special Projects Section

Purpose

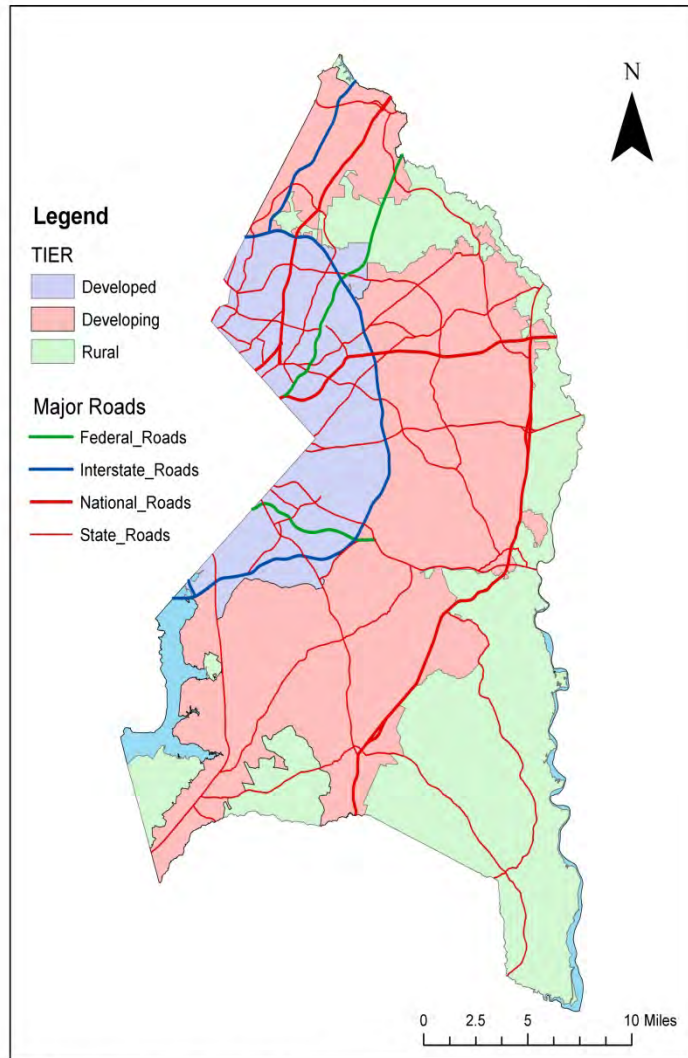
The purpose of this report is to fulfill the requirements of the 2009 Senate Bill 280 entitled Smart, Green, and Growing—Smart and Sustainable Growth Act of 2009 and the 2009 Senate Bill 276 entitled Smart Growth Goals, Measures, and Indicators and Implementation of Planning Visions, with regard to providing certain development data and information for statewide planning purposes.

Executive Summary

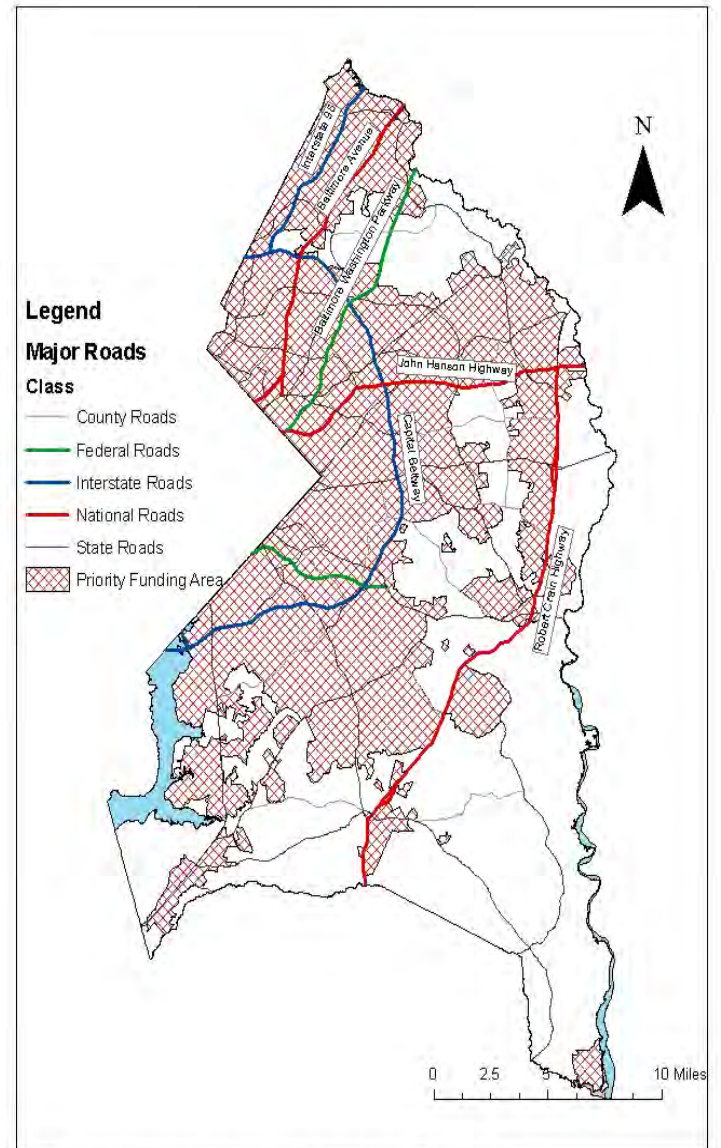
- ❖ **In 2012 the creation of new residential lots increased by 4.7 percent.**
- ❖ **County issued residential building permits increased significantly from 217 in 2011 to 1,512 in 2012.**
- ❖ **The majority of new residential/commercial development and public infrastructure improvements took place in the County's PFA.**
- ❖ **The 2002 *Prince George's County Approved General Plan* is consistent with similar plans in neighboring counties of Montgomery, Howard, Anne Arundel, and Calvert.**
- ❖ **The County has been relatively successful in focusing growth within the PFA. However it has been less successful in attracting growth to the Developed Tier.**

2012

Prince George's County Tiers and Priority Funding Area (PFA)



Source: M-NCPPC Geographical Information Systems, 2011



Source: Prince George's County Planning Department Geographical Information System 2010

Development Patterns

New Subdivisions Created and Residential and Commercial Building Permits

- ❖ **By 2012, out of a total of 423 new residential lots created, only 165 or 39 percent were located in the PFA, a decrease of 58 percent from the year 2010.**
- ❖ **The percentage of residential building permits issued in the PFA increased significantly from 74 percent in 2011 to 92 percent in 2012, a difference of 18 percent.**
- ❖ **Commercial space construction continues to occur primarily within the PFA. Out of the total commercial square footage for each year, 98.6 percent was constructed in the PFA in 2011, and 99.1 percent was constructed in 2012.**

Public Infrastructure Investments

Libraries, Public Safety, Schools and Transportation

- ❖ **In 2012, the vast majority of public infrastructure investments took place inside the PFA. Listed below are some examples of public infrastructure investments:**
 - **One-hundred percent of new school construction or school renovation projects took place inside the PFA.**
 - **Eighty-five percent of new and on going transportation projects were inside the PFA.**
 - **One library project and four fire station project were also located in the PFA.**

Continued County Commitment to Smart Growth

- ❖ **The Priority Preservation Area (PPA) Functional Master Plan will further Smart Growth goals by developing additional goals, objectives, policies, and strategies to protect farm and forest land in the County's Rural Tier.**
- ❖ **The Plan Prince George's 2035 (General Plan Update) effort will build upon the 2002 *Prince George's County Approved General Plan* and will address existing, changing, and new priorities with strong links to Smart Growth such as quality of life, sustainability, and transit-oriented development.**
- ❖ **Ninety-five percent of the Rural Tier was placed in the Sustainable Growth Act Tier IV.**