



MARYLAND

12

MARYLAND

CBTRUST

ANNUAL  
REPORT  
2011-2012

CBTRUST

11  
12



*Treasure the Chesapeake*



*Where the Money Goes When You Support the Chesapeake Bay Trust*

EDUCATION

RESTORATION

COMMUNITY OUTREACH

**T**he Chesapeake Bay Trust, as a nonprofit grant-making organization, is dedicated to protecting and restoring the Chesapeake Bay and its rivers in Maryland and throughout the broader Bay watershed. Our goal is to improve our watershed by focusing on three core objectives;

environmental education, community outreach, and Bay restoration; and innovation in each.



Since 1985, the Trust has awarded more than \$50 million in grants to improve local communities and the Chesapeake Bay. We reach more than 120,000 Marylanders each year in every county in Maryland and Baltimore City through our grant programs and special initiatives, in addition to those in other states. Our reason is simple: we believe that getting citizens involved is the key to restoring the Chesapeake Bay.

**\$50 million  
in Grants**

Dear Friends of the Chesapeake Bay Trust,



In recent years, as the science of our region's natural resources has advanced, we have come to understand the power and ability that citizens and communities play in the restoration and preservation of our watersheds. The Chesapeake Bay Trust has been proud to nurture this growing capacity. Our job at the Trust is to provide resources that engage citizens in work to restore and protect the local streams, rivers, forests, and other habitats across all of Maryland's watersheds and the broader Chesapeake. We connect individuals to the natural resources in their backyards, increase knowledge about their importance, and provide the tools necessary to restore and protect them.

This past year, in 2012, we once again posted record grant and project awards. We awarded 322 grants to our region's non-profit organizations, community associations, schools, and other groups, offering over \$5.8 million in grants and special initiatives such as the Chesapeake Conservation Corps, environmental education capacity building and training, an urban green jobs research and training project, and more. This level of funding surpasses any other year in the Trust's history.

Our work and the work of our grantees would not be possible without support from many sources, of which the Treasure the Chesapeake license plate program and the Bay Fund income tax check-off program, both created and supported by the Maryland General Assembly, serve as the basis. We leverage these funds with contributions from federal and state partners, corporate and private partners, and individual donors who have increasingly supported programs at the Trust that accomplish common goals. We thank those who represent those sources, including the 400,000 Marylanders who proudly display their Bay plates, and look forward to fruitful partnerships in years to come.

Each year, the Chesapeake Bay Trust board and staff continue to be impressed by the outstanding accomplishments of our grantees and program partners. In 2012, our grantees and Chesapeake Conservation Corps Volunteers engaged almost 34,000 community volunteers who donated over 50,000 hours; educated 83,000 K-12 students using the outdoors as a classroom; hosted over 1,200 events and workshops that educated another 34,000 attendees; and planted almost 180,000 native trees and plants to restore 107 acres of forest buffer, wetlands, and other habitats; and installed another four acres of innovative green infrastructure practices. In addition, the Trust helped the broader Bay restoration community learn about green jobs in the stormwater realm, convened to discuss restoration practices, articulated research-based K-12 environmental education curricula, and advanced the social science behind engaging individuals in voluntary actions to aid our watersheds.

I want to thank all our partners, grantees, funders, and technical experts for their hard work and tireless support this past year. I hope this year's annual report provides a glimpse into the amazing work that has been accomplished by them, and by the Chesapeake Bay Trust, during this past year.

Sincerely,

Jana Davis, Ph.D.  
Executive Director  
Chesapeake Bay Trust



## PLANTS:

Planted 179,697 native trees and plants.

# 179,697

## STUDENTS:

Engaged 83,688 students in outdoor field experiences.



# 83,688

## TEACHERS:

4,688 teachers taught students about their environment and the Chesapeake Bay.

# 4,688



## SHORELINE:

Created 6,320 linear feet of living shoreline.



## VOLUNTEERS:

# 33,878

Engaged 33,878 citizens who volunteered 51,337 hours to clean up local neighborhoods, the Bay and its rivers.

## TRASH:

# 70

Removed 70 tons of trash and 5 acres of invasive species from streams and rivers.



## STORMWATER:

Planted more than 4 acres of rain gardens and distributed 642 rain barrels.



## HABITAT:

Restored 44 acres of streamside buffers and precious wetlands.





## Board of Trustees

**Tara Potter**  
Verizon (ret.)  
*Chair of the Board of Trustees*

**Honorable John Astle**  
Maryland State Senate

**Torrey C. Brown, M.D.**  
Intralytix, Inc.

**Stuart A. Clarke**  
Town Creek Foundation

**Honorable Valerie Ervin**  
Montgomery County Council

**J. Matthew Gambrell, Esq.**  
Calvert Marina

**Joseph Gill**  
Maryland Department of  
Natural Resources

**W. Warren Hamel, Esq.**  
Venable, LLP

**F. Carter Heim, CPA**  
HeimLantz

**Virginia Kearney**  
Maryland Department of  
the Environment

**Louise Lawrence**  
Maryland Department of Agriculture

**Steve Linhard**  
St. Mary's School & Parish

**Honorable Adam Ortiz**  
Office of the Prince George's County  
Executive

**Dr. Margaret Palmer**  
National Socio-Environmental  
Synthesis Center

**Honorable Shane Robinson**  
Maryland House of Delegates

**Terence Smith**  
Journalist

**Scot T. Spencer**  
The Annie E. Casey Foundation

**Benjamin Wechsler**  
Linowes and Blocher LLP

### Emeritus Trustees

**Governor Harry R. Hughes**  
**Martin H. Poretsky**



## Staff

### Executive Office

**Jana Davis, Ph.D.**  
*Executive Director*

### Finance and Administration

**Steve Russo**  
*Director of Finance  
& Administration*

**Heather Adams**  
*Office Manager*

### Grant Managers and Technical Assistance

**Jeffrey Lerner**  
*Director of Programs & Partnerships*

**Jamie Baxter**  
*Program Director*

**Jen Wijetunga**  
*Senior Program Officer*

**Hieu Truong**  
*Program Officer*

**Kacey Wetzal**  
*Program Officer*

**Tara Baker**  
*Program Coordinator*

### Communications & Development

**Molly Alton Mullins**  
*Director of Communications  
& Development*

**Kristin Foringer**  
*Communications & Development  
Manager*

### Chesapeake Bay Funders Network

**Amy Burdette**  
*Coordinator*

## Trust Volunteers

*Throughout the year many talented and knowledgeable individuals have lent their expertise to the Trust and also volunteered for partner events. We are truly thankful for their assistance.*

Abby Grebasch	Katy Phelps
Abby Hancock	Kelsey Hallowell
Amanda Bassow	Ken Hendrickson
Anita Kraemer	Kenneth Hendrickson
Audrey DeGregorio	Kevin Shabow
Beth McGee	Kevin Smith
Bhaskar Subramanian	Kristen Fleming
Brenda Louie	Kristin Pauly
Brent McCloskey	Lamar Lewis
Brian Day	Larissa J. Graham
Britt Slattery	Larry Brown
Brittany Smith	Laura Connelly
Bryan Seipp	Lee Ann Hutchison
Carol Wong	Liana Pipitone
Carolyn Steinberg	Lindsay Eney
Carrie Roble	Lise Soukup
Cathy Brill	Liz Van Dolah
Chris Aadland	Louise Lawrence
Chris Maex	Mandy Chesnutt
Chuck Henney	Marcus Griswold
Colleen Zarek	Margaret Palmer
Dan Nees	Marian Honecny
Daphne Pee	Marie Moll-Amego
David Hwang	Mary Andrews
Debra Weller	Matthew Fleming
Denise Rigney	Meghan Kelly
Dominique Luekenhoff	Meredith Lathbury Girard
Donna Clem	Mike Pfefferle
Elena Takaki	Pete Bsumek
Elizabeth Rice	Peter Hill
Elle O'Brien	Dr. Poornima Madhavan
Erin Ling	R. John Dawes
Erin Tush McArdle	Rich Lefebure
Gary Heath	Rich Takacs
Gary Hedges	Rick Ayella
Ginny Kearney	Robert Burg
Gwen Johnson	Sally Claggett
Heather Forsyth	Sam Stokes
Heather Jenietel	Samuel Little
Jake Reilly	Sarah Bodor
Jeff Blass	Sarah Boynton
Jennifer McDaniel	Sarah Haines
Jennifer Raulin	Sarah Lane
Jennifer Carr	Sean McGuire
Jessica Vasas	Shannon Sprague
Joe Arrowsmith	Sophie Foscue
John Moss	Stacy Bond
John Papagni	Stephanie Westby
John Rhoderick	Dr. Steve Jacob
Josh McGrath	Stuart Clarke
Judy Preston	Stuart Echols
Julie Ayers	Susan McDowell
Julie Diegez	Tara Potter
Julie Hester	Tom Pilholski
Julie Winters	Verna Harrison
Justin Haynes	Victor Ukpolo
Kanishka Wijetunga	Victoria Carrasco
Kate Boicourt	Virginia Witmer
Katherine Register	Walter Priest



In January 2012, the Trust held its Annual Legislative Reception and Awards program in the Miller Senate Office Building in Annapolis. In total, more than 150 legislators, grantees and Bay supporters attended to honor these exceptional individuals and their contributions to environmental education, community outreach and Bay restoration.

*The Chesapeake Bay Trust celebrates its 2012 Annual Awards Program winners.*



*Award winner Robert Gallagher with Delegate Ron George.*

**2012 Ellen Fraithe Wagner Award:**  
**Robert Gallagher**  
West/Rhode Riverkeeper,  
Anne Arundel County

As the founder of the West/Rhode Riverkeeper, Robert Gallagher has engaged and empowered countless local communities and residents through his outreach work and volunteer programs. Recently he helped found the Anne Arundel County Chapter of the League of Conservation Voters and is a known advocate for Bay conservation issues. He is well respected within the environmental community, and has been integral in efforts to organize residents to support conservation goals.

**2012 Teacher of the Year Award:**  
**Erol Miller**  
Northwood High School,  
Montgomery County

One of awardee Erol Miller's many accomplishments was the creation of the Northwood Chesapeake Bay Trail, a new environmental outdoor classroom and community green space located in Montgomery County. This project included the removal of over 11,000 pounds of trash, the clearing of invasive species and the installation of educational materials. His award included \$2,500 for his school to continue its innovative work.

**2012 Student of the Year Scholarship:**  
**Solon Snider**  
Severna Park High School,  
Anne Arundel County

Solon Snider, the recipient of the Trust's \$5,000 Student of the Year scholarship, helped develop a successful recycling program at his school and led the charge for Severna Park to be named a Maryland Green School. Snider is an active member of the Chesapeake Regional Association of Student Councils and also served as co-chairman of the Environmental and Community Action Committee.

**2012 Honorable Arthur Dorman Scholarship:**  
**Natalie Oliver**  
Bladensburg High School,  
Prince George's County

Recognizing a Maryland student for promoting diversity, the Trust's \$5,000 Honorable Arthur Dorman Scholarship was presented to Natalie Oliver. Oliver's environmental passion has been shaped by her science curriculum at school, her membership in the Port Towns Youth Council, and her volunteer hours with the Anacostia Watershed Society. As a volunteer, Oliver has been responsible for removing countless pounds of trash and invasive species from the Anacostia, as well as managing tree maintenance in her urban watershed.

**2012 Melanie Teems Award:**  
**C.A.R.E. Community Association**  
Baltimore City

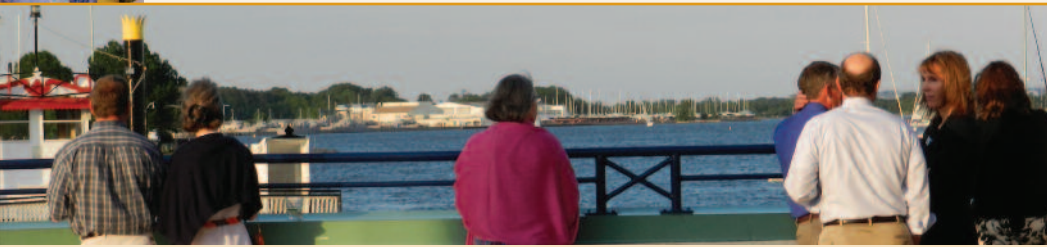
The C.A.R.E. Community Association was honored for its outreach and community engagement work to improve east Baltimore City. With grant support from the Trust, C.A.R.E. was able to implement a trash removal and mural painting project that connected residents to their local watershed while also reducing illegal dumping.

**2012 Dr. Torrey Brown Award:**  
**Maryland Senate President Thomas V. Mike Miller, Jr.**

In 2012 the Trust honored Maryland Senate President Thomas V. Mike Miller, Jr., for his Chesapeake Bay efforts and community leadership. In 2010, President Miller spearheaded the creation of the Chesapeake Conservation Corps, a program led by the Trust that provides career and leadership training for young people interested in environmental careers and Chesapeake Bay watershed protection.



*Senate President Mike Miller addresses the evening's attendees.*



On May 18, 2012, the Chesapeake Bay Trust hosted its 14<sup>th</sup> Annual Treasure the Chesapeake Celebration at the Marriott Waterfront hotel in Annapolis.

Celebration raised more than \$60,000 to fund environmental education, community engagement and Bay restoration projects throughout Maryland.



Senator John Astle and his wife Jayne are honored at this year's Treasure the Chesapeake Celebration.

The Trust would like to extend its sincerest gratitude to its premier sponsors Constellation Energy, M&T Bank, the Great Chesapeake Bay Swim, Venable and Wheelabrator Baltimore.



## New! 1<sup>st</sup> Annual 5K for the Bay a Great Success!



Quiet Waters Park  
Annapolis, MD

On Saturday, June 16, the Chesapeake Bay Trust hosted its first-ever 5K for the Bay at Quiet Waters Park in Annapolis. Almost 300 runners and walkers joined the Trust for this 3.1 mile run/walk with proceeds benefitting Chesapeake Bay restoration and educational programs. Special thanks to all runners who came out to join the Trust, as well as the organizations that supported this year's inaugural race, including the Chesapeake Bay Roasting Company, Panera Bread,



Runners smile after completing the 1<sup>st</sup> ever 5K for the Bay

MotoACTV, eCruisers, Fleet Feet Sports Annapolis, Annapolis Irish Festival, 103 WRNR, G&G Outfitters, the Bowie Baysox and JEB Design.





## More than Grant Making: Trust provides Technical Assistance and Leadership in the Bay Community

In recent years, the Trust has been called upon to serve more than just a grant-making role in the natural resource community of Maryland and other Chesapeake watershed states. We have identified key needs, matched them up with the strong technical skills of our staff, and now offer technical assistance in certain strategic areas. In this way, we can break through some of the barriers and continue to advance watershed restoration and protection.

### Developing an Environmentally Literate K-12 Student Body

For the past four years, the Trust has been a key collaborator in Maryland's Children in Nature Partnership, an initiative launched by Governor Martin O'Malley to provide Maryland students with knowledge of and a connection with the natural environment. Last year, the Maryland State Board of Education adopted the first ever environmental literacy graduation requirement in the nation. This year, the Trust helped develop the strategy for providing outdoor experiences for all Maryland students and helped draft environmental literacy standards. We continue to work with our NOAA partners, and our new EPA Office of Education partner, to convene curriculum, evaluation, and other experts to develop best practices in K-12 environmental education.



### Advancing New Techniques to Accomplish Behavior Change

The Trust's primary goal is to engage citizens in watershed restoration and protection efforts. But how? The social science of how to engage citizens in a way that changes behavior is advancing every day, and the Trust is on the forefront of this new field. We are infusing social marketing principles into our grant programs to promote social marketing and behavior change models as a framework. In addition, we have offered training to our grantees who wish to base their outreach and awareness programs upon this new outcomes-based framework. Through this effort, the Trust is becoming a leader in behavior change social marketing.

### Increasing Capacity for Larger-Scale Restoration

As Chesapeake Bay restoration advances, the Trust has embarked upon two programs designed to help organizations develop advanced capacity to be key partners. The first, our Capacity Building program in which the National Fish and Wildlife Foundation, Town Creek Foundation, and other members of the Chesapeake Bay Funders Network have partnered with the Trust, provides training and other resources to help organizations increase their ability to play a significant role in coordinated restoration efforts.

In the second program, the Trust has played a role in developing and managing construction of larger-scale restoration projects funded through the EPA and Maryland Department of the Environment's State Revolving Loan Fund program. The Trust was chosen by MDE to work on three of these projects, and in 2012, managed a \$740,000 living shoreline at the Smithsonian Environmental Research Center (co-funded by NOAA) with a local partner, a \$120,000 stormwater wetland project at the YMCA Camp Letts with the West/Rhode Riverkeeper, and a \$900,000 stream restoration project with the South River Federation.

### Stormwater, Green Infrastructure and Green Jobs: Identifying Potential, Developing Training, and Implementing Practices

Changes in Bay restoration processes will likely provide expanded opportunities for for-profit entities engaged in water quality work. Some have asked whether companies that specialize in restoration, landscaping, engineering, and building recognize the opportunities and challenges, have the existing capacity to meet demand, and plan to adjust or train staff accordingly. In 2012, the Trust, with



funding partners U.S Department of Labor and the EPA, and programmatic partners Center for Watershed Protection and Anne Arundel Community College's Center for Workforce Solutions, embarked on three exercises. First, we surveyed for-profit entities in key industries to document the new need for staff trained in stormwater green infrastructure. Second, based on the outcomes, we developed and piloted a short-term training program. Third, we funded grants for the second year with our EPA partners through the Green Streets, Green Jobs, Green Towns program, which seeks to implement green infrastructure practices and provide opportunities for local green job employment.

# Grant Amounts by Area



## WESTERN MARYLAND

- Allegany: \$208,059
- Carroll: \$59,463
- Frederick: \$26,044
- Garrett: \$12,650
- Washington: \$108,085

## CENTRAL MARYLAND

- Baltimore: \$378,869
- Baltimore City: \$566,029
- Harford: \$58,765
- Howard: \$52,753
- Montgomery: \$216,559

## SOUTHERN MARYLAND

- Anne Arundel: \$613,962
- Calvert: \$28,616
- St. Mary's: \$112,958
- Charles: \$12,874
- Prince George's: \$222,888



**EASTERN SHORE**

- Caroline: \$67,955
- Cecil: \$155,751
- Kent: \$190,599
- Queen Anne's: \$230,023
- Talbot: \$143,928
- Dorchester: \$119,053
- Somerset: \$449
- Wicomico: \$97,681
- Worcester: \$64,157



**With Partner Support:**

- PENNSYLVANIA: \$80,000**
- VIRGINIA: \$545,569**
- WEST VIRGINIA: \$45,000**
- DELAWARE: \$20,000**
- WASHINGTON, DC: \$47,950**



**WATERSHED WIDE: \$1,325,522**



## EDUCATION

Ensuring that students are environmentally literate through K-12 curriculum development, field experiences, and green school development.



## RESTORATION

Advancing the science and implementation of restoration best management practices that reduce pollution and improve habitat.

## MINI GRANT PROGRAM

# 154 projects awarded for \$394,242 in grants



participation in the restoration and protection of the Chesapeake Bay and its tributaries.

The Chesapeake Bay Trust Mini Grant Program receives the most requests in the Trust's portfolio, with over 200 grants awarded this year alone. This program awards up to \$5,000 to support activities at schools and non-profit organizations that help promote awareness and

## OUTREACH AND COMMUNITY ENGAGEMENT GRANT PROGRAM

# 24 projects awarded for \$405,840 in grants

Through its Outreach and Community Engagement Grant Program, the Trust seeks to increase individual and community stewardship through efforts that build ownership of local watersheds and engage individuals in stewardship practices and projects that benefit the Bay. This year the Trust also created a Behavior Change track within this grant program to promote social marketing models that actually seek to modify individual and community behaviors.

## COMMUNITY OUTREACH

Engaging citizens and communities to improve the health of local waterways through community clean-ups, tree plantings and other stewardship practices and projects.

# 4,688 teachers reached

# 33,878 Volunteers Engaged





# 83,688 Students Engaged



## ENVIRONMENTAL EDUCATION GRANT PROGRAM

**13 projects awarded for \$430,160 in grants**

The Trust's Environmental Education Grant Program seeks to increase environmental stewardship by providing grants that build and expand K-12 environmental education programs and increase student access to outdoor learning experiences. Just last year Maryland became the first state in the nation to enact an environmental literacy requirement so that all Maryland students graduate with knowledge of, and a connection to, their natural world.

## RESTORATION GRANT PROGRAM

**21 projects awarded for \$463,343 in grants**

The Trust's Restoration Grant Program was established to provide grants to organizations and agencies for community-based restoration projects that work to restore and protect the Chesapeake Bay and its rivers. Through this program, the Trust seeks to fund restoration projects that provide measurable ecological results and also serve as community-based demonstration projects.

**179,697 native plants and trees planted**

## GREEN STREETS-GREEN JOBS-GREEN TOWNS GRANT PROGRAM

**10 projects awarded for \$376,000 in grants**

The Green Streets-Green Jobs-Green Towns Grant Program is made possible in partnership with the Chesapeake Bay Trust, U.S. Environmental Protection Agency, Maryland Department of the Environment, and Maryland Department of Natural Resources. This collaborative effort seeks to advance watershed protection, community livability, and economic vitality throughout the watershed through the development of stormwater management techniques, green jobs creation and enhanced resident livability.

**4 acres of green infrastructure practices created**



### COMMUNITY GREENING GRANT PROGRAM

Nine projects awarded  
**\$210,336**  
in grants

The Trust's Community Greening Grant Program provides funding for on-the-ground restoration work and other activities that support greening and tree canopy programs in Maryland's urban and suburban communities. "Greening" plans increase forest canopy, reduce stormwater runoff, improve air quality, and enhance the quality of life in urban areas.

### WATERSHED ASSISTANCE GRANT PROGRAM

The Watershed Assistance Grant Program is designed to support watershed planning and the design of watershed restoration and protection projects in Maryland. In partnership with the Maryland Department of Natural Resources, this program provides funding for planning and design assistance associated with protection and restoration programs and projects that lead to improved water quality in the Maryland portion of the Chesapeake Bay watershed and the Maryland Coastal Bays.

This program is made possible through partnership with the Maryland Department of Natural Resources

14 projects awarded  
**\$359,000**  
in grants



**44 acres**  
of wetlands and  
streamside buffers

### LIVING SHORELINES GRANT PROGRAM

16 projects awarded for  
**\$810,350** in grants

The Chesapeake Bay Trust, in conjunction with the National Oceanic and Atmospheric Administration Restoration Center, and Maryland's Departments of the Environment and Natural Resources, created this grant initiative to reverse the trend of shoreline hardening by encouraging the creation of living shoreline restoration projects and by enhancing public awareness about the benefits of living shorelines. Through this grant program partnership, the Trust has created 28,000 linear feet of living shoreline and 18 acres of wetland habitat during the past seven years.



**\$810,350**

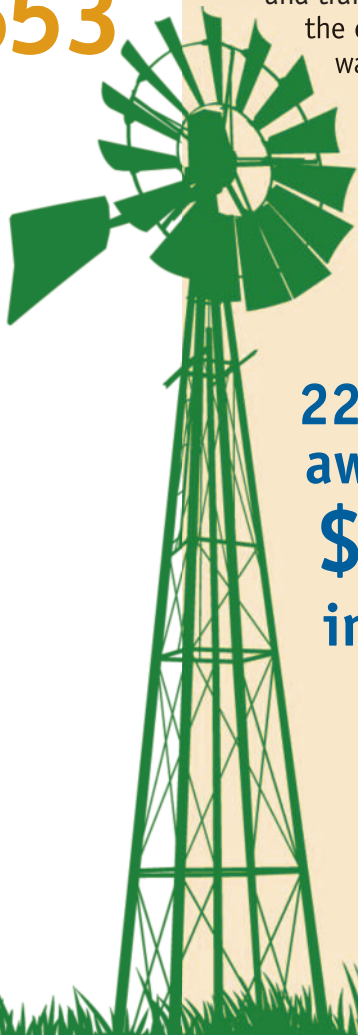


**70 tons**  
of trash  
removed

## AGRICULTURE INITIATIVE

**Two grants awarded for \$143,553 in funding**

In partnership with the Chesapeake Bay Funders Network, the Chesapeake Bay Trust's Agricultural Initiative seeks to strengthen the economic sustainability of the Chesapeake Bay farming community and improve the health of rivers and streams that feed into the Bay.



## CAPACITY BUILDING INITIATIVE

The Capacity Building Initiative is a three year program that provides assistance to organizations in the form of grants, technical assistance, and training in order to enhance the effectiveness of watershed organizations by increasing their power to advance local watershed protection priorities through collaborative strategies.

**22 grants awarded for \$671,000 in funding**



## PIONEER GRANT PROGRAM

**Three grants awarded for \$299,900 in funding**

The goal of the Pioneer Grant Program is to encourage innovation while supporting practitioners to develop or advance ideas and projects that will result in increased best management practices to accomplish water quality benefits in local streams, rivers, and ultimately the Chesapeake Bay. In 2012, three innovative grants addressed new technologies for phosphorus removal from dairy manure, nutrient benefits of detention ponds conversion to wetlands, and fertilizer application in non-agricultural landscapes.



## ANNE ARUNDEL COUNTY COMMUNITY TREE PLANTING MINI GRANT PROGRAM

**Three grants awarded for \$2,500 in funding**

The Anne Arundel County Forest Conservancy District Board and the Chesapeake Bay Trust announced a new partnership this past year to provide small grants under \$1,000 to help communities and organizations increase the number of trees and tree canopy in neighborhoods, parks, and their local communities throughout Anne Arundel County.



# Chesapeake Conservation Corps Expands in 2012



Started in 2010, the Chesapeake Conservation Corps is a program that provides career and leadership training for young people interested in environmental careers and watershed protection.



This initiative, established by the Maryland Legislature and spearheaded by Senate President Mike Miller, matches young people, ages 18-25, with organizations throughout the state for



Senate President Mike Miller, Congressman John Sarbanes, and others from the Maryland General Assembly welcome this year's Chesapeake Conservation Corps class.

stipend-supported, one-year terms of service. In its inaugural year, 16 Corps Volunteers worked on a variety of environmental initiatives and due to the success of the program, the Corps expanded in 2012 to include 21 participants, who gained valuable work experience with local groups. In turn, non-profits and government organizations received resources beyond grants, which increased their capacity and overall effectiveness.

The third year of the program, which began in August 2012, expanded to a class of 26 exceptional young people who will serve at Maryland watershed organizations, county governments, and other nonprofits for the next year.

## Providing Jobs in Maryland

Since the program's inception, almost 30 percent of previous Corps participants have been hired by their host organizations, most in newly created positions, thus providing sustained employment for young people in Maryland and capacity building for host organizations. Furthermore, retention rate of Corps Volunteers in the program has been 100 percent since it began in 2010.

## Project Support and Grant Writing

As a part of the program, each Conservation Corps participant has the opportunity to apply for a mini grant from the Trust for up to \$1,000. This enables Corps members to manage a restoration, outreach or education project as well as gain valuable job training skills in grant writing, budget development and project management.



### Thank you Class of 2012

Patrick Bond, Parks and People Foundation; Stacy Bond, Maryland Association for Environmental and Outdoor Education; Erin Bowman, Reservoir Hill Improvement Council; Braeden Bumpers, Friends of Rock Creek's Environment; Kristin Buter, Phillips Wharf Education Center; Laura Cattell, National Aquarium in Baltimore; Dietrich Epp-Schmidt, Eco City Farms; Taren Evans, American Chestnut Land Trust; Stephanie Fischer, Maryland Department of Natural Resources; Ileana Freytes, Casa de Maryland; Kosoko Jackson, Arlington Echo Outdoor Education Center; Concetta Laskey, Calvert Marine Museum and CHEARS; Racheal Patrice, Habitat for Humanity Choptank; James Phillips, Anacostia Watershed Society; Joseph Ports, West/Rhode Riverkeeper; Allison Rich, Baltimore City Public Schools; Nicole Robinson, Frederick County Office of Environmental Sustainability; Lea Rubin, Chesapeake Bay Foundation; Wesley Tse, Eastern Shore Land Conservancy; Zoe Unruh, Montgomery County Public Schools; Carol Wong, South River Federation

Special thanks to Maryland's Department of Natural Resources and Constellation Energy for contributing to the funding of this program.





## Treasure the Chesapeake License Plate



Last year more than 46,000 Marylanders showed their love and commitment for the Chesapeake Bay by purchasing Treasure the Chesapeake license plates. These license plates only cost \$20, but these funds add up



support of the Bay plate program and our efforts to inform Marylanders about what the Treasure the Chesapeake license plate funds in their own community. In 2012, the Trust worked with MVA to provide informational materials about Bay plates via online registration renewals, mailed inserts, MVA's website and in branches directly throughout the state. For more information and to order a Bay plate online, visit [bayplate.org](http://bayplate.org).



to the largest source of revenue for the Chesapeake Bay

Trust. For every \$20 plate purchased, the Trust can plant two trees, remove 10 pounds of trash, or fund an outdoor field experience for two Maryland students. Without the support of so many Marylanders through the Bay plate, the Trust would not be able to accomplish so much for the Bay and local Maryland communities.

The Trust also thanks the Maryland Motor Vehicle Administration for their exceptional



### Individual Donations

In 2012, the Trust continued to expand its direct donor outreach efforts in order to meet the ever-expanding demand for grants. During the course of the year, 1160 individual Chesapeake Bay supporters donated almost \$109,000 in support of environmental education, community outreach and Bay restoration.



### Bay Fund Tax Check-off

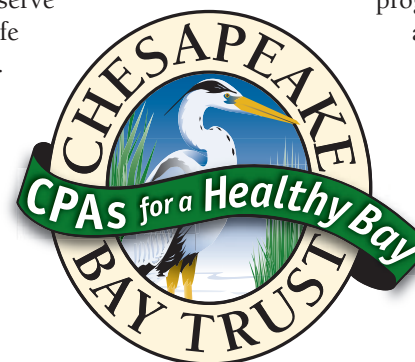
Last year more than \$1.1 million was contributed through the Chesapeake Bay and Endangered Species Fund, a donation program created to support restoration and to protect Maryland's endangered species. This fund, which is split evenly between the Trust and the Maryland Department of Natural Resources, allows Marylanders to donate through their tax return to help the Bay and conserve Maryland's native wildlife and endangered species. Launched in 1990, the Chesapeake Bay and Endangered Species Fund is one of the most successful voluntary tax check-off programs in the nation. In fiscal year 2012, almost 37,000 Maryland state income tax statements were returned with contributions to the fund, which



averaged \$28.19 per donation. Donations of any amount can be made and all are tax deductible the following year.

In 2012, the Trust also launched "CPAs for a Healthy Bay," a new program designed to encourage CPAs and other tax professionals to raise awareness about the check-off.

In total, 23 CPA firms signed up for the program in the first year and mailed over 7,000 inserts about the Bay fund to their clients. Next year the Trust hopes to expand this program to reach more Marylanders to educate them about this voluntary mechanism to help the Chesapeake Bay.



## BUSINESS PARTNERS

Each year the Chesapeake Bay Trust partners with numerous businesses to raise funds and awareness to help restore and protect the Chesapeake Bay and its rivers.

- Annapolis Irish Festival
- BayLand Consultants & Designers
- Bowie Baysox
- Brian Bays Insurance
- By the Bay Botanicals
- Calvert Marina
- Chaney Enterprises
- Constellation Energy
- Diageo Chateau & Estate Wines Company
- Eddie Bauer
- Groupon Grassroots
- Harvest Beer Festival
- Herrington on the Bay
- Imbrium Systems
- M&T Bank
- North Sails America
- OpinionWorks
- Rams Head Promotions
- Reliable Churchill
- Silopanna Music Festival
- Shoreline Design
- Storage Village
- Venable
- Verizon
- Wheelabrator Baltimore
- Whole Foods



## FEDERAL, STATE AND LOCAL AGENCY PARTNERS



The Trust collaborates with a host of federal, state and local agencies on its grant programs and specific initiatives to support restoration and outreach programs.

- National Oceanic and Atmospheric Administration (NOAA) Restoration Center
- National Oceanic and Atmospheric Administration (NOAA) Chesapeake Bay Office
- U.S. Environmental Protection Agency Region 3
- U.S. Environmental Protection Agency Chesapeake Bay Program
- U.S. Department of Labor
- U.S. Fish and Wildlife Service
- Smithsonian Environmental Research Center
- Comptroller Office of Maryland
- Maryland Department of Agriculture
- Maryland Department of the Environment
- Maryland Department of Natural Resources
- Maryland Motor Vehicle Administration
- Maryland State Department of Education
- Anne Arundel County Forestry Board

## FOUNDATION AND NONPROFIT PARTNERS

Numerous foundation and nonprofit partners offer their funding and expertise to raise awareness and further our shared mission of enhancing Bay stewardship.

- Agua Fund, Inc.
- Biophilia Foundation
- blue moon fund
- Bunting Family Foundation
- Corina Higginson Trust
- FishAmerica Foundation
- Foundation for Pennsylvania Watersheds
- Maryland Association of CPAs
- MARPAT Foundation
- Nabit Foundation/Great Chesapeake Bay Swim
- National Fish and Wildlife Foundation
- Oyster Recovery Partnership
- Prince Charitable Trusts
- Rauch Foundation
- Shared Earth Foundation
- Singing Field Foundation
- The Abell Foundation
- The Curtis and Edith Munson Foundation
- The Keith Campbell Foundation for the Environment
- The Morris & Gwendolyn Cafritz Foundation
- The Summit Fund of Washington
- Town Creek Foundation
- Virginia Environmental Endowment
- William Penn Foundation



The Chesapeake Bay Funders Network is a funding collaborative dedicated to improving the capacity within communities to initiate and sustain change to promote a healthier Chesapeake Bay. Founded in 2003, the CBFN provides opportunities for grantmakers, including the Chesapeake Bay Trust, to network and exchange information while developing shared strategies for the protection and restoration of the Chesapeake Bay, and the waters, lands, and communities of the broader watershed.





## Over \$300,000

Chesapeake Bay and Endangered Species  
Fund Tax Check-off Contributors  
Maryland Bay Plate Owners  
Maryland Department of Natural  
Resources  
Maryland Department of the  
Environment  
National Oceanic and Atmospheric  
Administration  
National Fish and Wildlife Foundation

## \$100,000-\$299,999

Town Creek Foundation

## \$25,000 - \$99,999

Agua Fund, Inc.  
Anonymous  
blue moon fund, Inc.  
Constellation Energy  
Curtis & Edith Munson Foundation  
Earth Resources Technology  
Frederick H. Prince Testamentary Trust  
Keith Campbell Foundation for the  
Environment  
Marpat Foundation  
Morris and Gwendolyn Cafritz  
Foundation  
Rauch Foundation  
U.S. Department of Labor  
U.S. Fish and Wildlife Service

## \$10,000-\$24,999

Community Foundation for the  
Alleghenies

## \$5,000-\$9,999

Cooper Thomas  
Doppelt Family Foundation  
Frank M. Ewing Foundation  
Great Chesapeake Bay Swim/  
Nabit Foundation  
M&T Bank  
Summit Fund of Washington  
Venable Foundation, Inc.  
Wheelabrator Baltimore

## \$2,500-\$4,999

Anne Arundel County Forestry Board  
Ernest Maier, Inc./PaveDrain  
Groupon Grassroots  
Michael and Jennifer Wargo  
Shelby Brewer

## \$1,000-\$2,499

Anonymous  
Bowie Baysox  
Chesapeake Bay Foundation  
Christian Crowley  
Jennifer Schorr  
Joshua Whatley  
Judith and Edwin Cohen Foundation  
Leslie Lake  
Linowes and Blocher LLP  
Matt Gambrell/Calvert Marina  
Matthew Earl  
OpinionWorks

Robert Ginsburg  
Shared Earth Foundation  
Shoreline Design, LLC  
Straughan Environmental, Inc.  
Tara Potter  
The Hatcher Group  
The MHE Foundation  
Warren Hamel  
William and Corrine Irwin

## \$500 - \$999

Andrew Snope  
Anthony Brudis & Associates, Inc.  
Association of Maryland Pilots  
Bay Dee Jays  
Catherine Bye  
Chaney Enterprises  
Dan and Amy Clements  
David and Judy Bonior  
Elizabeth Krentzman  
Frank and Jane Otero  
Friends of Valerie Ervin  
Jake Reilly  
Jason Wilson  
Joseph Gill  
Kathy Souder  
Mary-Scott Kaiser  
Michael A. and Holly C. McFarland  
Midshore River Conservancy, Inc.  
National Geographic Society  
Paul Bonham  
Richard and Alice Isaacman  
Scott and Karen Koppa  
Shannon Downey  
The Henry Foundation  
Weitzman Agency

## \$250 - \$499

Al and Vicki Saxon  
Allen Hance  
Amy Schirmer  
Anacostia Watershed Society  
Anna Willman  
Barbara Stuart and Ralph Robinson  
BCC & Associates  
Biohabitats, Inc.  
Bruce Downey  
Center for Watershed Protection, Inc.  
Chesapeake Covenant Community  
Chesapeake Legal Alliance  
Chester River Association  
Claudia Burns  
Darlene Bookoff  
Edwin Richardson  
Elwyn Jordan  
Evergreen Heritage Center Foundation  
Fredric Pement  
Glenn Pfadenhauer  
Gunpowder Valley Conservancy  
Herrington on the Bay  
James Wetzel  
Jana Davis  
Jeanne Clarke  
Jerome Acks  
Jill Rose  
John and Fran Flanigan  
Friends of John Astle  
John & Ann Curley  
Joy Naquin  
Laurie Jenkins  
Leslie Derr  
Living Classrooms Foundation  
MAEOE  
Martin Poretzsky



\$250 - \$499 (continued)

Maryland Environmental Service
McMurphy Productions
Michael Heffner
Michelle Nicoll
Nanticoke Watershed Alliance
Parks and People Foundation
Paul and Mary Foringer
Paul Barrett
Port Tobacco River Conservancy
Priscilla Cooper
Rebecca Chasan
Reliable Churchill
Richard Howe/AXIOM Systems
Rita Torres
Robert Book
Sarah Mallonga
Spa Creek Conservancy
Stanley Nowak
Steve Linhard
Steven Russo
STSG, Inc.
Susan Severo
Terence Smith
Towson University STEM Education Center
Touchstone Behavioral Health
Victoria Timian
Virginia Kearney

\$1-\$249

Adam Panarese
Adele Gabrielli
Adele Hess
Ahni Vanek
Alan Ward
Alan Wojtalik
Albert Bongiovi
Albert Irion
Alberta Magzarian
Aleta Meyer
Alfred and Georgiana Evans
Alice Ferguson Foundation
Alice Hance
Alicia Bickoff
Alicia Dixon
Alicia Pimental
Aline Martinez
Alison Hatch
Allan and Ilene Blumberg
Allen Bogert
Allen Wiener
Allison Durell
Alvin and Harriet Shapiro
Amanda Bania
Amanda Mock
Amanda Strong
Amet Figueroa
Amit Sinha
Amy Dhillon
Amy Guard
Amy Krumbein
Amy Lane
Amy Orndorff
Andrea Berna
Andrew Beaulieu
Andrew Wedemyer
Anelia Slavoff
Angela Barnes
Angela Rinaudo
Angie Voll
Ann Baun
Ann Harris
Ann Jackson
Ann W. Fisher
Anna Haneke
Anna Plitt
Anna Smith
Anna Willman
Anne Boyer
Anne Dellinger
Anne Louise Heald
Anne Mortenson

Annetta Saunders
Annie Gehringer
Annie Pike
Anthony Aversa
Anthony Moscato, Jr.
Antoinett Miller
Antoinette Sykes
Anton Hooper
Arlene Woods
Arnold Sanders
Arthur Bunnell
Arthur Latchaw
Ashleigh Korves
Ashley Hibshman
Augusta Hunt
Ayanna Gaines
B.D. McDermott
B.J. Rowlett, Jr.
Baird Straughan
Barbara Burst
Barbara Cronin
Barbara Falkinburg
Barbara Golding
Barbara Goss
Barbara Hamil
Barbara Hathaway
Barbara Kinsey
Barbara Nyseter
Barbara O'Brien
Barbara Rodean
Barbara Ziemba
Barry and Ann Palmer
Benjamin Villa
Benjamin Williams
Bernard Gallagher
Bernice Watts
Beth Keister
Bettina Moffitt
Beverly Foster
Beverly Milligan
Beverly Pringle
Bevin Buchheister
Bob and Ann Whitcomb
Bonita Korengel
Bradley Boban
Brenda Bazemore
Brent Reitze
Brenton Campbell
Brian Loose
Brian Richter
Brianne Walsh
Brigham Bowen
Brooke Singler
Bruce Odessey
Bruno Vasta

Bryan O'Hare
Burt Dall
Camilla Barror
Cara Losey
Carelyn Sheppard
Carl Luebben
Carley Phillips
Carmel Pattison
Carol Cooke
Carol Jelich
Carol Maffett
Carole Bubas
Carole Nadeau
Caroline Mitchell
Caroline Mix
Carolyn Crow
Carroll Henderickson, Jr.
Cary "Mitch" Smalley
Casey Soneira
Casey Zurenko
Cassandra Burton
Cassandra Gray
Catherine Cratty
Catherine Mollick
Catherine O'Malley
Cathryn Meegan
Cathy Nagg
Cecelia Donovan
Cecil Backus, Jr.
Cecilia Rund
Celeste Herbert
Chad Dobson
Charles August
Charles Bores
Charles Byus
Charles Cuffley
Charles Dougherty
Charles Eberhart
Charles Fisher
Charles Hager
Charles Harne III
Charles Lawrence
Charles McCarthy
Charles Michaels
Charles P. Johnson & Associates
Charles Robinson
Charles Ruzicka, Jr.
Charles Scott
Charles Walthall
Charles Webb
Charlotte Gardner
Charlotte Preece
Charlotte Tabisz
Chelsea Hunt

Cheryl Giering
Chestertown Garden Club
Chiung hui Juan
Chris Carter
Chris Figueras
Chris Stancliff
Chris Trumbauer
Christian Wagman
Christiane Manko-Morgan
Christina Jordan
Christina Knepper
Christina Tryon
Christine Moraski
Christine Wagner
Christine Werner
Christine Zuzarte
Christopher Brennan
Christopher Landis
Christopher Vale
Christopher Wildmann
Christy McKinney
Chuck McCarty
Cleo Karafas
Clyde Freeman
Coleen Loomis
Conchita Tuers
Cornelia Huger
Courtenay Culp
Courtney Knatz
Courtney Smith
Craig Nickel
Cristan Farmer
Cynthia Fischer
Cynthia Payne
Dan Esser
Dan Zaccagnini
Dana Billock
Dana Bradshaw
Dana Penrod
Daniel and Paula Wortman
Daniel Hellerstein
Daniel Omahen
Daniel Shively
Daniel Southworth
Danielle Bartlett
Danielle Cornell
Daphne Fuentevilla
Darbie Macubbin
Darlene Lechman
Darlene Levenson
Darlene Wright
Dave Heintzelman
David and Diane Egge
David and Lorraine Fike
David Baltimore

David Borchardt
David Earles
David Ehrenfeld
David Escobar
David Goggin
David Hess
David Kent
David Martin
David Murphy
David Nelson
David Nelson
David Peerless
David Pettit
David Sabol
David Sands
David Schneider
David and Jacqueline Regan
David Verchomin
David Weinstein
David Weiss
Dawn Jacobs
Dawn and Craig Turner
Dean Hoover
Deana Crumbling
Debbie Johnson
Debbie Wagener
Debbie Wetzel
Deborah Grim
Deborah Hanka
Denise Christenson
Denise France
Dennis Crawford
Dennis Dela Cruz
Dennis Cusack
Derek and Eeda Wallbank
Derek Thiessen
Desmond Welch
Dewey Newman
Diana Weatherby
Diane Ritchie
Dina Baxter
Dolores Karam
Dolores Milmoie
Dolores Norton
Don and Taruna Barber
Don Fletcher
Donald and Alice Hirschfeld
Donald and Renate Powers
Donald Concord
Donald Couchman
Donald Crouch
Donald Phillips
Donald Rejonis
Donald Walter
Donna Armiger



**\$1- \$249 (continued)**

Donna D'Ascenzo  
 Donna Horoschak  
 Donna Sellman  
 Donna Storm  
 Doris Buck  
 Dorothea Parault  
 Dorothy Beidleman  
 Dorothy Leonard  
 Dorothy Matanin  
 Dorothy Muhlena  
 Dorothy Tartaglia  
 Douglas Chavis  
 Douglas Guessford  
 Douglas Trower  
 Duane Degler  
 Dustin and Shannon  
 Baldrige  
 Dwayne Hampton  
 Dwight Sullivan  
 E.F. Wieboldt  
 Earl MacDonald  
 Ed and Julie Hester  
 Ed Crane  
 Edmund Tortolani  
 Eduard Orvisky  
 Edward and Margaret Haser  
 Edward Dennis  
 Edward Ditto  
 Edward Hogan  
 Edward Hogarth  
 Edward Hudson  
 Edward Kafader  
 Edward McCoy  
 Edward Murray  
 Edward Scheiderer  
 Edward Wright  
 Elaine Dodd  
 Elaine Wood  
 Eleanor Dayhoff-Brannigan  
 Eleanor Prout  
 Eleanor Riggs  
 Elisabeth Jones  
 Elise Egolf  
 Elise Larsen  
 Elizabeth Buckell  
 Elizabeth Denniston  
 Elizabeth Hessel  
 Elizabeth Jedlicka  
 Elizabeth Jevons  
 Elizabeth Johnstn  
 Elizabeth Payer  
 Elizabeth Shelton  
 Elizabeth Smith

Elizabeth Van Dolah  
 Elizabeth Williams  
 Ellen Anderson  
 Ellen Charles  
 Ellen Ewart  
 Ellen Oberholtzer  
 Elvia Thompson  
 Emily Conrad  
 Emily Durkee  
 Emily Hollister  
 Emily Neal  
 Emily Tai  
 Erasmia Lois  
 Eric Barger  
 Eric Borsoni  
 Eric Winnette  
 Ernest Thomas  
 Erwin Roeser  
 Estelle Ison  
 Eudokia Bourque  
 Eugene Chudakov  
 Eugene Langbehn  
 Eugene Seward  
 Eugenia Bibb  
 Evelyn Adkins  
 Evelyn Nolan  
 Fallon McCormick  
 Farley Fischer  
 Faye Funderburke  
 Felicia Stolusky  
 Felix Lapinski  
 Flora Ingenhousz  
 Florence Pringle  
 Edward Kafader  
 Foster Hutchinson  
 Frances Fox  
 Frances Gracely  
 Frances Peck  
 Frances Reynolds  
 Frank Sanford  
 Frank Wright  
 Franklyn Dailey  
 Freddie Mac Foundation  
 Frederick Adams  
 Frederick Yardley  
 Fredrika Moser  
 G. Covi  
 Gabrielle Long  
 Gail Fought  
 Gail Gorlitz  
 Gail Overcash  
 Gail Phillips  
 Gary Anderson  
 Gary Glowac  
 Gary Moulton  
 Gary Schroder

Gautam Patel  
 Gene Lewis  
 George and Martha Schmidt  
 George Day  
 George Martin  
 George Morse  
 George Sisson  
 George Steffens  
 Georgine Garbisch  
 Geraldine Clinton  
 Gerhard Klose  
 Gilberto Carbajal  
 Gina Stracuzzi  
 Girish Jadhav  
 Glenna Plitt  
 Gloria Hicks  
 Gloria Roper  
 Goldie Nussbaum  
 Gorm Emberland  
 Grace Miller  
 Greg Knauf  
 Gregory Dowd  
 Gregory Elman  
 Gregory Jones  
 Gregory Kalik  
 Gregory Rydzak  
 Gustavo Sims  
 Guy W. Hager  
 Gwen Manseau  
 Gwendolyn Skeens  
 H. Norman Hough  
 Harold Huecker  
 Harold Merson  
 Harold Wheeler  
 Harry Coleman  
 Harry Davies  
 Harry Rietman  
 Harvey Holtgraver  
 Heather Stevens  
 Harold and Ruth Gainer  
 Heidemarie Bibber  
 Heidi Bossley  
 Heidi Overby-Lee  
 Heidi Rothenhaus  
 Helen Alexander  
 Helen Czarniewicz  
 Helen Davies  
 Helen Eliason  
 Helen Shockley  
 Henry Fawell  
 Herbert and Rita Posner  
 Herbert Garten  
 Herbert Morris  
 Hilary Falk  
 H. Jay Penny

Holly Spalt  
 Hugh Marbury  
 Humberto Olivera  
 Irene Dearie  
 Irene Johnson  
 Irene Rice  
 Irene Robling  
 Isabel Sherdon  
 J.C. Humphreys  
 Jack Hawkins  
 Jacob Thompson  
 Jacqueline Bradley  
 Jacqueline Fritsch  
 James and Vincenza  
 McGinnis  
 James Bailey  
 James Bonomo  
 James Bruchey  
 James Burge  
 James Cohee  
 James and Roberta Davis  
 James Dominick  
 James Gelatt  
 James Handy  
 James Heffernan  
 James Hubbell  
 James Jones  
 James Kinney  
 James Kreiter  
 James Landis  
 James Ledger  
 James Mackley  
 James McQueen  
 James Mudd  
 James Sanders, Jr.  
 James Scully  
 James Sherring  
 James Sigafoose  
 James Smith  
 James Thomas  
 James Thompson  
 James Tucker  
 James Wilcox  
 Jamie and Laura Baxter  
 Jamie Darr  
 Jamie Fawell  
 Jane Jessey  
 Jane Miller  
 Jane Pittman  
 Janet Camara  
 Janet Douglas  
 Janet Fisher  
 Janet Martz  
 Janice Hedges  
 Jason Barker

Jason Crucoff  
 Jason De Los Reyes  
 Jason Williams  
 Jean Engman  
 Jean Jones  
 Jean Rodgers  
 Jean Schneider  
 Jeanne Dagradi  
 Jeanne Saunders  
 Jeannette Altman  
 Jeannine Saunders  
 Jeff Cogan  
 Jeffery Dresher  
 Jeffrey Green  
 Jennifer Couzin-Frankel  
 Jennifer Koh  
 Jennifer Raulin  
 Jennifer Shaffer  
 Jenny Hopkinson  
 Jeremy Walker  
 Jerome Boeckmann  
 Jerome Lester  
 Jess D'Ambrosi  
 Jessica Dax  
 Jim Burgin  
 Jim Cave  
 Jin Ok Yang  
 Joan Cmarik  
 Joan Craver  
 Joan Gugerty  
 Joan Hekimian  
 Joan and Theodore Kaiser  
 Joan Pickens  
 Joan Saenz  
 Joan Schembri  
 Joan Wilson  
 Joanna Remmel  
 Joanne Darkey  
 Joanne Darky  
 Joe and Eva Barsin  
 Joe Mullineaux  
 Joerg Schnackenberg  
 Johanna Robinson  
 John and Mary Pugh  
 John Bacon, Jr.  
 John Bishop  
 John Boyle  
 John Byle  
 John Cavallo  
 John Capone  
 John Carter  
 John Coleman  
 John Crucoff  
 John Diamante  
 John Enterline

John Ferguson  
 John Fouts  
 John Friel  
 John Harms  
 John Hopkins  
 John Lee  
 John Light  
 John Magee  
 John Marchetti  
 John McClelland  
 John Restall  
 John Rhoderick  
 John Richter  
 John Rowe  
 John Saupp  
 John Scott  
 John Scott  
 John and Virginia Senes  
 John Sharples  
 John Shepherd  
 John Sprock  
 John Stewart  
 John Taylor  
 John Thackrah  
 John Van Laningham  
 John Weiss  
 John Yi  
 Jon Schraft  
 Jonathan Block  
 Jonathan Mizrack  
 Joseph and Betty Saunders  
 Joseph and Stephanie Brewer  
 Joseph Baker  
 Joseph Derr  
 Joseph Rostkowski  
 Joseph Smith  
 Joseph Snyder  
 Joseph Toth  
 Joseph Wynne, III  
 Josephine Hargis  
 Joyce Baden  
 Joyce Jacobs  
 Joyce Kunkle  
 Joyce Mayor  
 Joyce McLucas  
 Judith Jamison  
 Judy Boyle  
 Judy Goldfarb  
 Judy and Steve Petsonk  
 Judy Pressman  
 Julia Breed  
 Julia Hawrylo  
 Julia Paules  
 Julia Pruchniewski  
 Juliana Ammon



## Donors

### \$1-\$249 (continued)

Julie Hare  
 Julie Jensen  
 Juliette Wheeler  
 Jun Lee  
 June Ackerman  
 June Coari  
 K. Busch-Bernhardt  
 Karen Adams  
 Karen Carp  
 Karen Claney  
 Karen Hefner  
 Karen Marie Klima  
 Ludwitzke  
 Karen McNulty  
 Karen Mullin  
 Karen Pell  
 Karen Richardson  
 Karen Stevenson  
 Karin Olsen  
 Karl Brass  
 Karl Matthes  
 Kate Cleary  
 Katharine Jones  
 Katherine Jaouni  
 Katherine Lacey  
 Katherine McGreivy  
 Katherine Metcalf  
 Kathleen Flibbert  
 Kathleen Governale-Zaidman  
 Kathleen Kirby  
 Kathleen Muller  
 Kathleen Rhodes  
 Kathleen Siebert  
 Kathleen Sullivan  
 Kathleen Turner  
 Kathleen Ziffer  
 Kathryn Allison  
 Kathryn Aquilla  
 Kathryn Carter  
 Kathryn Robinson  
 Kathrynne Hansell  
 Kathy Hawkins  
 Kathy Schnaubelt  
 Katie Simon  
 Kavita Pavamani  
 Kay Katz  
 Kaylan Kaatz  
 Keith Risser  
 Kelley Cox  
 Kelli Johnson  
 Kelloanne Johnson  
 Kelly Bollwahn  
 Kelly Foulke

Kelly Lowe  
 Kelly Ridgewell  
 Kelsey Romeo-Stuppy  
 Ken Heist  
 Kenneth Dorn  
 Kenneth Lauderdale  
 Kenneth Seiple  
 Kevin Boyle  
 Kevin O'Brien  
 Kevin West  
 Kevin Zucker  
 Kim Lycette  
 Kim Piasecki  
 Kim Spangler  
 Kimberly Busch  
 Kimberly Gough  
 Kraig Kline  
 Kristi Starr  
 Kristin Foringer  
 Kristin Marion  
 Kristin Mele  
 Kristin Poland  
 Kristine Miller  
 Kyle Priddy  
 Laetitia Combrinck  
 Lamar Lewis  
 Lambert Zaengle  
 Larry Campbell  
 Larry Feather  
 Laura Anthony  
 Laura Cammarata  
 Laura Noell  
 Lauren Greoski  
 Lauren Phipps  
 Lauren Sadler  
 Laurie Burr  
 Lawrence Lacey  
 Lawrence Sager  
 Leah Laurange  
 Leam and Anne Martin  
 Lee Franklin  
 Leo McDonagh  
 Leonard Schreiber  
 Lesley Cook  
 Leslie Berman  
 Leslie Gradet  
 Lester Fowler  
 Lewis Palombo  
 Libby Steinberg  
 Liddell Madden  
 Linda Dunn  
 Linda Leary  
 Linda Naas  
 Linda Nowack  
 Linda Opiekun

Linda Rice  
 Linda Tuschman  
 Linda Vrooman  
 Lindsay Eney  
 Lindsay Lang  
 Lindsay Ward  
 Lindsey Lord  
 Lisa Cesario  
 Lisa Duffy  
 Lisa McCaffrey  
 Lisa Singler  
 Lisa Smith  
 Lisa Wiegmann  
 Lizabeth Walters  
 Lois Aughenbaugh  
 Lois Erhard  
 Lois Robinson  
 Lora Spalt  
 Lorrie Rothgery  
 Louise Lawrence  
 Lucretia Marmon  
 Lyn Lansdale  
 Lyndeale Bernard  
 Lynne Fitzhugh  
 Lynne Sendejo  
 Malcolm Hutto  
 Marc Charpentier  
 Margaret Boles  
 Margaret Dimoia  
 Laura Anthony  
 Margaret Griggs  
 Margaret Kwiatkowski  
 Margaret Palmer  
 Margaret Pryor  
 Margaret Raby  
 Margaret Sinyard  
 Margaret Stevens  
 Margaret Taliaferro  
 Margaret Upaul  
 Margaret Williams  
 Margriet Mitchell  
 Marguerite Jenkins  
 Maria Oria  
 Marie Bunting  
 Marie Kosanovich  
 Marilyn Bates  
 Marilyn Hickey  
 Marilyn Mause  
 Marilyn Simacourbe  
 Marinoelle Hernandez  
 Marion Haspert  
 Marisa Freese  
 Marj Sparer  
 Marjorie Campbell  
 Marjorie Cahn  
 Marjorie Craig

Mark Robinson  
 Mark Roskin  
 Mark Smith  
 Mark Warner  
 Mark Williams  
 Martha Holland  
 Martha Krieger  
 Martha Schmidt  
 Martha Williams  
 Martin Peltzer  
 Marvin Kranz  
 Marvin Morrison  
 Marvin Paddy  
 Mary Ann Cheston  
 Mary Ann Mann  
 Mary Becka  
 Mary Clarke  
 Mary Dodge  
 Mary Dumm  
 Mary Ellen Olcese  
 Mary Helen Winter  
 Mary Kay Ganning  
 Mary Kreamling  
 Mary Lanigan  
 Mary Ostergranite  
 Mary Patricia Howe  
 Mary Spiri  
 Mary Stiles  
 Mary Sullivan  
 MaryBeth Sorady  
 Matthan Martir  
 Matthew Mullin  
 Matthew Smith  
 Matthew Straiter  
 Maureen Zeiss  
 Maurice Day  
 Maya Lentz  
 Meg Jenkins  
 Meghan Lovett Capone  
 Melanie Odlum  
 Melissa Bunker  
 Melissa Rose  
 Melissa Vecera  
 Merle Sturm  
 Michael and Jessica Chapman  
 Michael and June Robinson  
 Michael and Melanie Teems  
 Michael Arones  
 Michael Beer  
 Michael Bird  
 Michael Brodie  
 Michael Creighton  
 Michael Lane  
 Michael Reed, Jr.  
 Michael Ryan

Michael Schaub  
 Michael Singer  
 Michele Parr  
 Michelle Lawrence  
 Michelle Moodispaw  
 Michele Nicole  
 Michelle Priddy  
 Michelle Serafin  
 Michelle Sweeney  
 Michelle Whissel  
 Mightor Estrella  
 Mike and Verna Holtzendorf  
 Mike Eckhart  
 Mildred Hann  
 Mimi Frank Hodsoll  
 Mitchell Pressman  
 Molly Hauck  
 Molly Martin  
 Molly Mullins  
 Mona Hicks  
 Myra Hall  
 Nan Bayster  
 Nancy Alper  
 Nancy Chu  
 Nancy Harvey  
 Nancy Inman  
 Nancy Leonard  
 Nancy Morgan  
 Nancy Newkirk  
 Nancy Rodman  
 Nancy Sorden  
 Nancy Zeidman  
 Naomi Greenberg  
 Natalie and Beth Spickler  
 Natalie Howard  
 Natalie Wilson  
 National Aquarium  
 of Baltimore  
 National Wildlife Federation  
 Neal Halsey  
 Neal Townsend  
 Nell Gilmore  
 Nicholas and Francine  
 Sinchak  
 Nicholas Dipasquale  
 Nicholas Newlin  
 Nicolas Ialongo  
 Nicole Claude  
 Nicole Richelderfer  
 Nikki Brandemarte  
 Norann Beck  
 Noreen Dobson  
 Norma Loeser  
 Norma Pettis  
 Norma Smith

Norman and Susan Levine  
 Norman McCord  
 Olga Owens  
 Olivia Sparer  
 Pamela Goscenski  
 Pamela Harding  
 Pamela Roo  
 Patricia Jeffers  
 Patricia Forbes  
 Patricia Gurevitch  
 Patricia Hillman  
 Patricia Jagodzinski  
 Patricia Jonas  
 Patricia Reilly  
 Patricia Rengel  
 Patricia Ross  
 Patricia Schuetz  
 Patricia Trent  
 Patricia Tonkin  
 Patricia Wyman  
 Patrick Flanagan  
 Patti Kinlock  
 Patti Lapinski  
 Paul and Kendra Redmond  
 Paul and Marjorie Richter  
 Paul Englert  
 Paul Hayne  
 Paul Helene Shoemaker  
 Paul Hurwitz  
 Paul Starke  
 Paul Tracy  
 Paula Gil  
 Paula Shea  
 Pauline Campbell  
 Peggy Harris  
 Peggy Murchake  
 Peggy Stamm  
 Penny Beitman  
 Penny Birdsong  
 Penny Womack  
 Pete Springston  
 Peter Bradley  
 Peter Curren  
 Peter Goodwin  
 Peter Luborsky  
 Peter Quinn  
 Philip Dunn  
 Philip Keeler  
 Philip True  
 Phillip DeVore  
 Phyllis Beard  
 Phyllis Dickey  
 Phyllis Whaley  
 Pierre Francois

**\$1-\$249 (continued)**

Plato Moore  
Pong Pathoumthong  
Quang Sang Thai  
Rachel Cesario  
Radoslaw Savage  
Raj Gupta  
Ralph Hutchins  
Rance Burger  
Randell Henderson  
Randi Rittman  
Randu Hogan  
Raymond Cline  
Raymond Updike  
Rebecca Cunard  
Rebecca Ridgley  
Reg Fields  
Renee Braun  
Reuel Kaighn  
Richard Davison  
Richard Hall  
Richard Hildreth  
Richard LaGala  
Richard Nickels  
Richard Norton  
Richard Patterson  
Richard Peppiatt  
Richard Raskhodoff  
Richard Rothe  
Richard Spencer  
Richard Wanerman  
Rita Holmes  
Rita Spencer  
Robert Amirault  
Robert and Goedele  
Fradkin-Gulikers  
Robert and Lynda Ingram  
Robert and Betty Batchelor  
Robert Brown  
Robert Carson  
Robert D'Agostino  
Robert Davidson  
Robert Ebel  
Robert Elliott  
Robert Gallagher  
Robert Geesaman  
Robert Grant  
Robert Hope  
Robert Hutchinson  
Robert Kearney  
Robert McCloskey  
Robert Nally  
Robert Oliver  
Robert and Karin Post

Robert and Susan Post  
Robert Pyatt  
Robert Resnik  
Robert Ringdahl  
Robert Rodriguez  
Robert Rogowsky  
Robert Sparks  
Robert Sutton  
Robert Swid  
Robert Westerdale  
Robert Wirsing  
Roberta Scherer  
Rodney Abrahams  
Roger Baker  
Roger Schermerhorn  
Roger Umstott  
Roger Williamson  
Roma Knee  
Rona Kleiman  
Ronald and Joanne Creamer  
Ronald Farrah  
Ronald King  
Ronald Pytel  
Ronald Schechter  
Ronald Silverstein  
Ronald Weston  
Ronald Wilson  
Rory Carroll  
Rosa Rojas  
Rosalie LaMonica  
Ross Cropper  
Ruann George  
Rudolph Gawlik  
Rudolph Keller  
Russ Knight  
Ruth Bowie  
Ruth Connolly  
Ruth Golding  
Ruth Harrington  
Ruth Przybyla  
Ruth Schwalier  
Ruth Shirk  
Ryan Hamilton  
Ryland Bailey  
Ryna Marinenko  
Sally Andrade  
Sally Claggett  
Sally Mayton  
Sally Meyer  
Sally Sellman  
Salvatore Marsanopoli  
Sam Young Moon  
Samuel Rogers  
Samuel Wood  
Sandra Andrews

Sandra Kagen  
Sandra Nielsen  
Sandra Webb  
Sanford Kirkland  
Sara Kahn  
Sara Moran  
Sarah Boynton  
Sarah Breitschwerdt  
Sarah Campbell  
Sarah Davis  
Sarah Demetrowitz  
Sarah Feidt  
Sarah Holub  
Sarah Lane  
Sarah Lash  
Sarah Potter Robbins  
Saundra Fellerman  
Scott Cochrane  
Scott Douglass  
Scott Fifield  
Scott Moulton  
Scott Stevens  
Sean Byrne  
Sean Samblanet  
Shane Sutton  
Shannon Cuffley  
Shannon Mosca  
Sharon Brown  
Sharon Coleman  
Sharon Embry  
Sharon Nelson  
Sharon Nettles  
Sharon Reed  
Sharon Shaffner  
Shauna Kennedy  
Shawn Brown  
Shawn Jacubec  
Sherard and Kathleen Cole  
Sheriden Clem  
Sherry Craft  
Shira Catlin  
Shirley Wigfield  
Stacy Mogren  
Stacy Surla  
Stanley Nowak  
Starrla Lares  
Stephanee Wallace  
Stephanie Blades  
Stephanie Button  
Stephen McHenry  
Stephen McIntyre  
Steven Murphy  
Steven Pratt, Jr.  
Storage Village, LLP  
Sunny Hess

Susan Absher  
Susan Kessler  
Susan Levy  
Susan Miller  
Susan Powers  
Susan Price  
Susan Schooles  
Suzanne Dupree  
Suzanne Foster  
Suzanne Lardeo  
Suzanne Wellborn  
Sylvia Chiofolo  
Sylvia Francus  
T. Peter Lowe  
Tama Chu  
Taylor McCaffrey  
Terrence Edwards  
Terry Ruffatto  
Terry Yarbrough  
Tessa Dyer  
The Misenheimer Family  
The Starnes Family  
Thekla Fitzpatrick  
Theodore MacDonald  
Theophilus Cain  
Thomas Abrams  
Thomas Armstrong  
Thomas Cook  
Thomas Dillow  
Thomas Foster  
Thomas Haines  
Thomas Hodges  
Thomas Krispin  
Thomas Lubey  
Thomas Madden  
Thomas Rinehart  
Tien Nguyen  
Tim Herbert  
Tim Matthews  
Tim McCloskey  
Timothy Aley  
Timothy Bowers  
Timothy Brennan  
Timothy Pulliam  
Todd Gehr  
Tom and Tina Bordonaro  
Tom Leigh  
Tom Sauer  
Tom Simpson  
Tracy Harrison  
Tracy Scaltz  
Trevor Morrissey  
Tyler Mahy  
Valerie Nyce  
Valerie Wagne

Vera Young  
Vicki Falter  
Victoria Bourgeois  
Victoria Martz  
Victoria Waidner  
Vincent Piselli  
Virginia Barrett  
Virginia Bridges  
Virginia Drain  
Virginia Russell  
Virginia Schaffer  
Vivi Rogers  
Volkan Taskin  
Wade Gregory  
Walter Beckerman  
Walter Landmesser  
Wayne Dalton  
Wayne Powell  
Wendell Boyd  
Wendy Zurinko  
Whitney Hines  
Whitney Morlock  
Wilbur Garrett  
William and Nan Miller

William Andersen  
William Ariano  
William Berg  
William Breakey  
William Brown  
William Cann  
William Clayborne  
William Coe  
William Fisher  
William Francis Rienhoff  
William Lenderkind  
William Michie  
William Minarik  
William Rehrmann  
William Stange  
William Trapnell  
William Zinger  
Wilma Yurche  
Wilnor Biscarra  
Woodrow Sanders  
Xiao Ye  
Yuan Yuan Chiu  
Zoe Warner

**REMEMBERING THE PASSING OF****Senator Arthur Dorman**

Each year the Chesapeake Bay Trust receives *In Memoriam* donations from family and friends who have lost a loved one who cared about the Chesapeake Bay. We are very sorry for the occasions that bring these gifts

to us, but we are incredibly grateful for the support. Most notably, we would like to extend our eternal gratitude to the loved ones of Senator Arthur Dorman who passed away in February 2012. The senator, who served on the Trust's board of trustees from its inception in 1985 until his retirement in 2003, played a large role in bringing Trust grant programs to a greater diversity of communities in Maryland. Each year the Trust awards the Honorable Arthur Dorman scholarship to a Maryland student in his honor.

# Fiscal Year 2012 for the Chesapeake Bay Trust

For more information, please see the Trust's annual financial statements at [www.cbtrust.org](http://www.cbtrust.org).



For 10 consecutive years, the Chesapeake Bay Trust has received a 4-star rating from Charity Navigator, the nation's leading independent evaluator of non-profit organizations, placing the organization in the top 1% of charities nationwide. According to Charity Navigator evaluators, this ranking which is the highest available for a nonprofit organization, indicates that the Chesapeake Bay Trust outperforms most other charities in America and is committed to sound financial management that is making a difference for the Bay. Almost ninety cents of every dollar the Trust receives goes directly to support on the ground projects and educational programs. The Trust's full financial statement is available at [www.cbtrust.org](http://www.cbtrust.org).

## FY 2012 SUPPORT AND REVENUE SUMMARY

### Contributions

**\$5,019,809**

General, Bay Plate, Bay and Endangered Species Fund, Fundraising, Other

### Grants and Partnerships

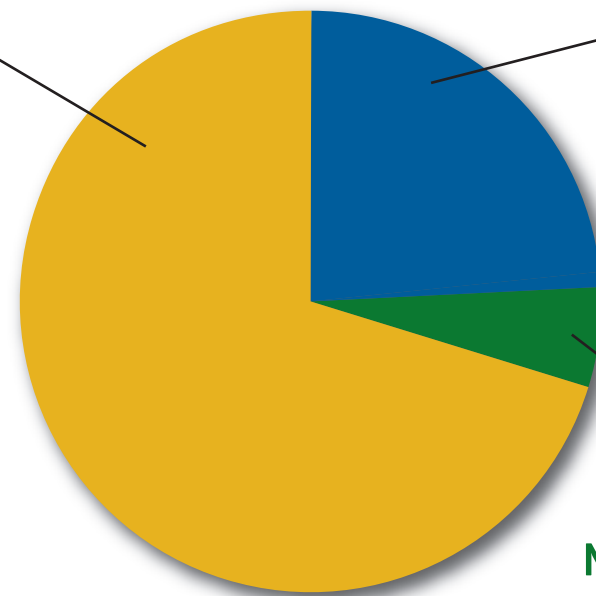
**\$1,352,597**

### Net Investment Income

**\$379,819**

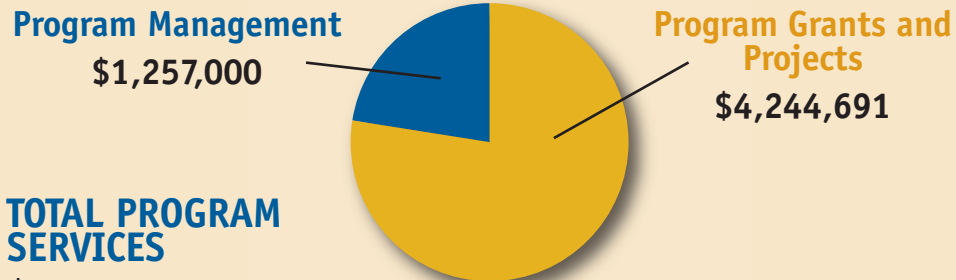
## TOTAL SUPPORT AND REVENUE

**\$6,752,225**



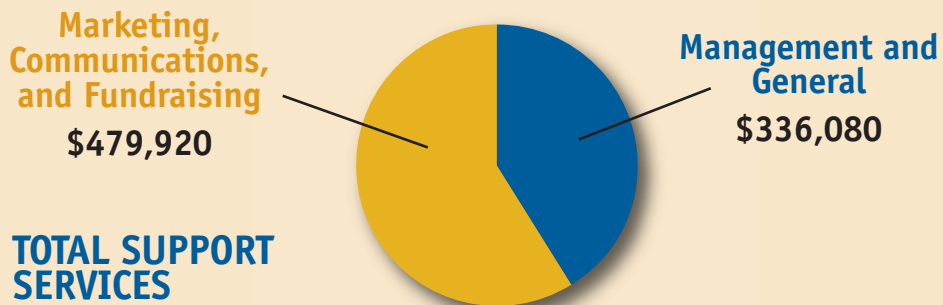
## FY 2012 EXPENSE SUMMARY

### PROGRAM SERVICES



**TOTAL PROGRAM SERVICES**  
\$5,501,691

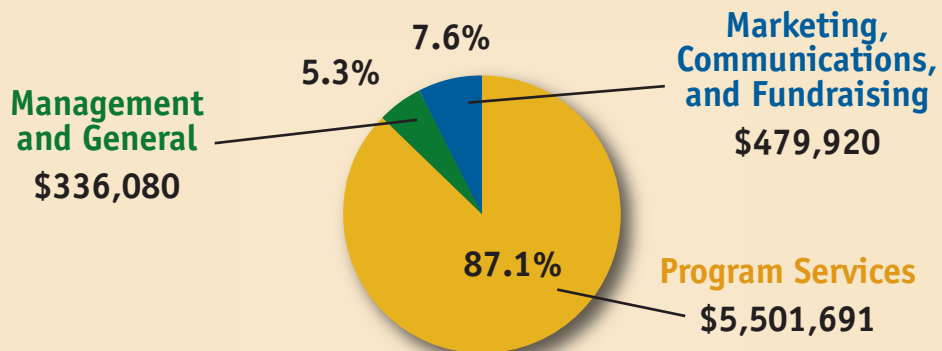
### SUPPORT SERVICES



**TOTAL SUPPORT SERVICES**  
\$816,000

**TOTAL EXPENSES: \$6,317,691**  
Change in Net Assets: \$434,534

### OVERALL EXPENSES



*Thank you for  
your support!*

# Where the Money Comes From:

Maryland's Treasure the Chesapeake  
license plate



Federal, state and  
corporate partnerships



Individual and private  
donations



Chesapeake Bay Fund  
Tax Check-off



# Where the Money Goes:

## Education

Ensuring that students are environmentally literate through K-12 curriculum development, field experiences, and green school development.

## Restoration

Advancing the science and implementation of restoration best management practices that reduce pollution and improve habitat.

## Community Outreach

Engaging citizens and communities to improve the health of local waterways through community clean-ups, tree plantings and other stewardship practices and projects.