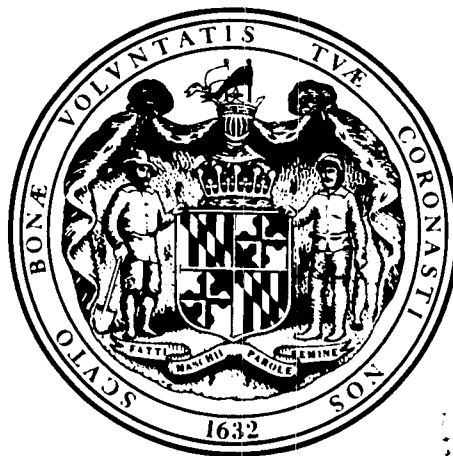


# STATISTICAL ABSTRACT

ANNUAL REPORT  
OF THE  
MARYLAND JUDICIARY  
1977-1978



LAW LIBRARY  
7TH CIRCUIT  
DEC 4 1978  
RECEIVED



Report Prepared By:

Deborah Unitus Berezna  
Robert C. Franke  
Jacqueline M. Agro

TABLE OF CONTENTS

DEFINITIONS	6
THE COURT OF APPEALS	11
THE COURT OF SPECIAL APPEALS	19
THE CIRCUIT COURTS	27
THE DISTRICT COURTS	65
APPENDIX	77

TABLES

A-1 -- A-9	Law, Criminal, Equity, and Juvenile Cases Filed, Terminated, and Pending
	A-1 First Judicial Circuit
	A-2 Second Judicial Circuit
	A-3 Third Judicial Circuit
	A-4 Fourth Judicial Circuit
	A-5 Fifth Judicial Circuit
	A-6 Sixth Judicial Circuit
	A-7 Seventh Judicial Circuit
	A-8 Eighth Judicial Circuit
	A-9 State Totals
B	Distribution, with Percentages, of Cases and Appeals Filed in the Circuit Courts
C-1	Distribution of Cases Filed in the Circuit Courts
C-2	Distribution of Cases Terminated in the Circuit Courts
D-1	Comparative Table of Law, Equity, Criminal and Juvenile Cases Filed and Terminated
D-2	Comparative Table of Law Cases Filed and Terminated
D-3	Comparative Table of Equity Cases Filed and Terminated
D-4	Comparative Table of Criminal Cases Filed and Terminated
D-5	Comparative Table of Juvenile Causes Filed and Terminated
E-1	Cases Tried by Jurisdiction
E-2	Law Cases -- Proportion of Trials to Dispositions
E-3	Criminal Cases Tried
E-4	Law Cases Tried

E-5 Equity Hearings

E-6 Cases Tried and Average Days from Filing to Trial in the Largest Jurisdictions

E-7 Average Days from Filing to Trial or Hearing

E-8 Average Days from Filing to Disposition

F Juvenile Dispositions

G Population and Caseload Per Judge -- Circuit Courts

H Civil Cases Instituted

I Comparative Appeals from District Court and Administrative Agencies

J Appeals from District Court and Administrative Agencies by Jurisdiction

K Comparative Appeals from Administrative Agencies

L Habeas Corpus and Post Conviction Cases Filed

M Applications for Review of Criminal Sentences

DC-1 Motor Vehicle, Criminal, and Civil Cases Filed in the District Court

DC-2 Motor Vehicle Cases Processed by the District Court

DC-3 Criminal Cases Processed by the District Court

DC-4 Civil Cases Processed by the District Court

DC-5 Comparative Motor Vehicle, Criminal, and Civil Cases filed in the District Court

DC-6 Comparative Motor Vehicle Cases Processed by the District Court

- DC-7            Comparative Criminal Cases Processed in the  
                 District Court
- DC-8            Comparative Civil Cases Filed in the  
                 District Court
- DC-9            Population and Caseload Per Judge

## Definitions As Used In This Volume

APPEAL -- The resorting to a higher court to reverse or correct a decision of a tribunal below. Appeals to the circuit courts include those:

- a. On the Record -- Matter is to be tried by a judge's review of a written or electronic recording of the proceedings in the District Court.
- b. Tried De Novo -- Matter is to be tried on the merits as an original proceeding even though initially tried at District Court level.
- c. From Administrative Agencies -- Matters arising from appeal of decisions from administrative agencies such as:

Workmen's Compensation Commission  
Zoning Appeals  
Liquor License Commissioners  
Department of Taxation and Assessments  
Motion Picture Censors  
Supervisors of Elections  
State Comptroller (Sales Tax, etc.)  
Funeral Director  
Physical Therapy  
Employment Security  
County Commissioner  
State Motor Vehicle Authority  
All other administrative bodies.

CASELOAD -- The total number of cases filed and/or terminated with or by a court during a specific period of time. Cases may include all categories of matters (law, equity, juvenile and criminal). The specific period of time may be as short as a day or as many years as cited. -- A case is a matter having a unique docket number.

C.I.N.A. -- Child in Need of Assistance

A child who needs the assistance of the court because:

- a. He is mentally handicapped or is not receiving ordinary and proper care and attention, and
- b. His parents, guardians, or custodian are unable or unwilling to give proper care and attention to the child and his problems provided, however, a child shall not be deemed to be in need of assistance for the sole reason he is being furnished non-medical remedial care and treatment recognized by State law.



C.I.N.S. -- Child in Need of Supervision

A child who requires guidance, treatment, or rehabilitation because:

- a. He is required by law to attend school and who is habitually truant from school;
- b. He is habitually disobedient, ungovernable, and beyond control of the person having custody of him without substantial fault on the part of that person;
- c. He departs himself so as to injure or endanger himself or others; or
- d. He has committed an offense applicable only to children.

DISPOSITION

In criminal cases, this will be the date of pronouncement of a Not Guilty Verdict, Probation, Stet, or Nolle Prose. If the verdict is guilty on any of the charges on a given docket number, the disposition date is the date of sentencing.

In civil cases, the date on which a final judgment is entered after trial or entry of a consent judgment; settlements, where an order of "Agreed and Settled" is filed on the docket; or where dismissals occur (voluntary or involuntary).

Stets and Inactivations are considered to be dispositions in Law Cases.

DISTRICT COURT -- CONTESTED -- Only applies to civil, a case that has gone to trial and both parties (plaintiff and defendant) appear.

DISTRICT COURT CRIMINAL CASE -- Single defendant charged per single incident. It may include multiple charges arising from the same incident.

DISTRICT COURT FILINGS -- Cases that apply only to the initiation of a civil action. Criminal and motor vehicle cases are reported as "processed" rather than as "filed."

DOCKET -- Formal record of court proceedings.

EX PARTE -- Only one party appears for trial.

FILING -- Formal commencement of a judicial proceeding by docketing the necessary papers pertaining to it.

FISCAL YEAR -- The period of time between July 1 of one year and June 30 of the next. For example: July 1, 1977, to June 30, 1978.

HABEAS CORPUS -- A writ which brings a person before a court (translation: you have the body). Proceeding to determine if a person is being illegally confined or a proceeding to allow a prisoner to testify in court.

LEAVE TO APPEAL -- Application to a court seeking its permission to file an appeal.

PENDING CASE -- Case which is an "open" one due to no final disposition having occurred.

POST CONVICTION -- Proceeding instituted to set aside a conviction or correct a sentence that was unlawfully imposed.

TERMINATION -- Same as "disposition."

TRIAL OR HEARING

- a. Law Cases -- For statistical purposes, a trial in cases at law, whether an original action or an appeal "de novo," is defined as (1) a contested hearing on the essential facts of the cause of action alleged for; (2) the intended purpose of making final disposition of the case; (3) in the absence of waiver, both parties must be present or represented, and; (4) contesting the action, and the proceedings must advance to the point where (5a) the jury is sworn, or if a non-jury case, (5b) at least one witness has been placed under oath. A case presented to the court on stipulated facts for a final disposition as a resolution of the law in the case is also classified as a "trial."
- b. Equity Cases -- For statistical purposes, an equity "trial" is defined as (1) a hearing on the facts upon which relief is sought for; (2) the intended purpose of making a final disposition of the case; (3) both parties need not be present or represented but the proceedings must advance to the point where at least one witness has been placed under oath. A case presented to the court on stipulated facts for a final disposition as to a resolution of the equitable

principles or remedies which are applied in the case is also classified as a "trial." This includes proceedings before a Master if these conditions are met.

- c. Criminal Cases -- For statistical purposes a trial in criminal cases, whether an original action or an appeal de novo, is defined as (1) a contested hearing on the essential facts of the specific offense as alleged for; (2) the maintained purpose of making final disposition of the case; (3) both parties must be present or represented; and (4) contesting the action and the proceedings must advance to the point where; (5a) the jury is sworn, or if a non-jury case, (5b) at least one witness has been placed under oath. Guilty and nolo contendere pleas entered prior to the occurrence of the events described in 5a or 5b above are not trials for purposes of this definition.



THE COURT OF APPEALS



During the fiscal year, July 1, 1977, through June 30, 1978, the Court of Appeals had 187 regular appeals before it for consideration. Thirteen of those appeals were carried over from the 1976 Term docket while 174 were filed on the 1977 Term docket.

Of the 174 appeals on the 1977 docket, 40 (22.9 percent) originated in the Sixth Appellate Judicial Circuit (Baltimore City). The third and fourth circuits accounted for 41 appeals each, while the second, fifth, and first circuits recorded 28, 15, and 9, respectively. In the four largest counties, Montgomery and Prince George's each registered 33 appeals while Baltimore recorded 20 and Anne Arundel 11. These 97 appeals, when added to the 40 reported in Baltimore City, accounted for 78.7 percent of all appeals filed.

At the close of the 1977-78 fiscal year, the Court of Appeals had disposed of all but 28 of the regular appeals pending before it. Those appeals had been heard but had not been disposed of by way of opinions being filed. During 1977-78 the Court actually considered and decided 142 appeals and filed 130 majority opinions in disposing of them. Reported opinions totaled 114 while 16 were unreported. Sixteen opinions were per curiam. Members of the Court also filed 13 dissenting and 3 concurring opinions. After docketing, appeals on the 1977 docket averaged 2.7 months until argument and were decided in an

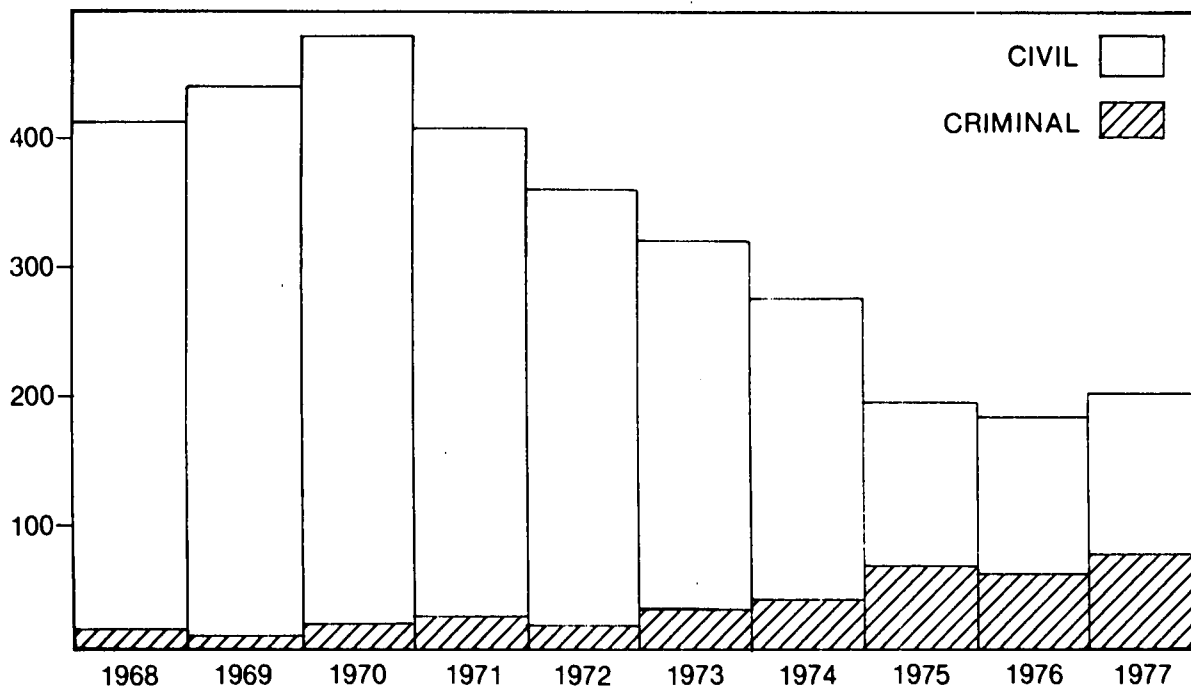
additional 1.7 months. Both figures were very slight increases over those recorded for the 1976 docket. Of the 174 appeals on the 1977 docket, 95 were cases that by-passed the Court of Special Appeals without being heard by that tribunal. Cases dismissed by counsel prior to argument or submission to the Court, which at one time were a considerable factor in reducing the workload of the Court, are no longer of great significance. Only 3.4 percent of the appeals on the 1977 docket were dismissed, and only 4.2 percent had been dismissed on the 1976 docket.

During 1977-78, 491 petitions for issuance of Writs of Certiorari were filed in the Court of Appeals with an identical number being terminated within the year. Criminal petitions constituted 55.6 percent (273) of those considered with the remaining 44.4 percent (218) being civil in nature. The Court granted 18.7 percent (92) of the total number of petitions submitted. Civil petitions granted totaled 44 and those in the criminal area numbered 48.

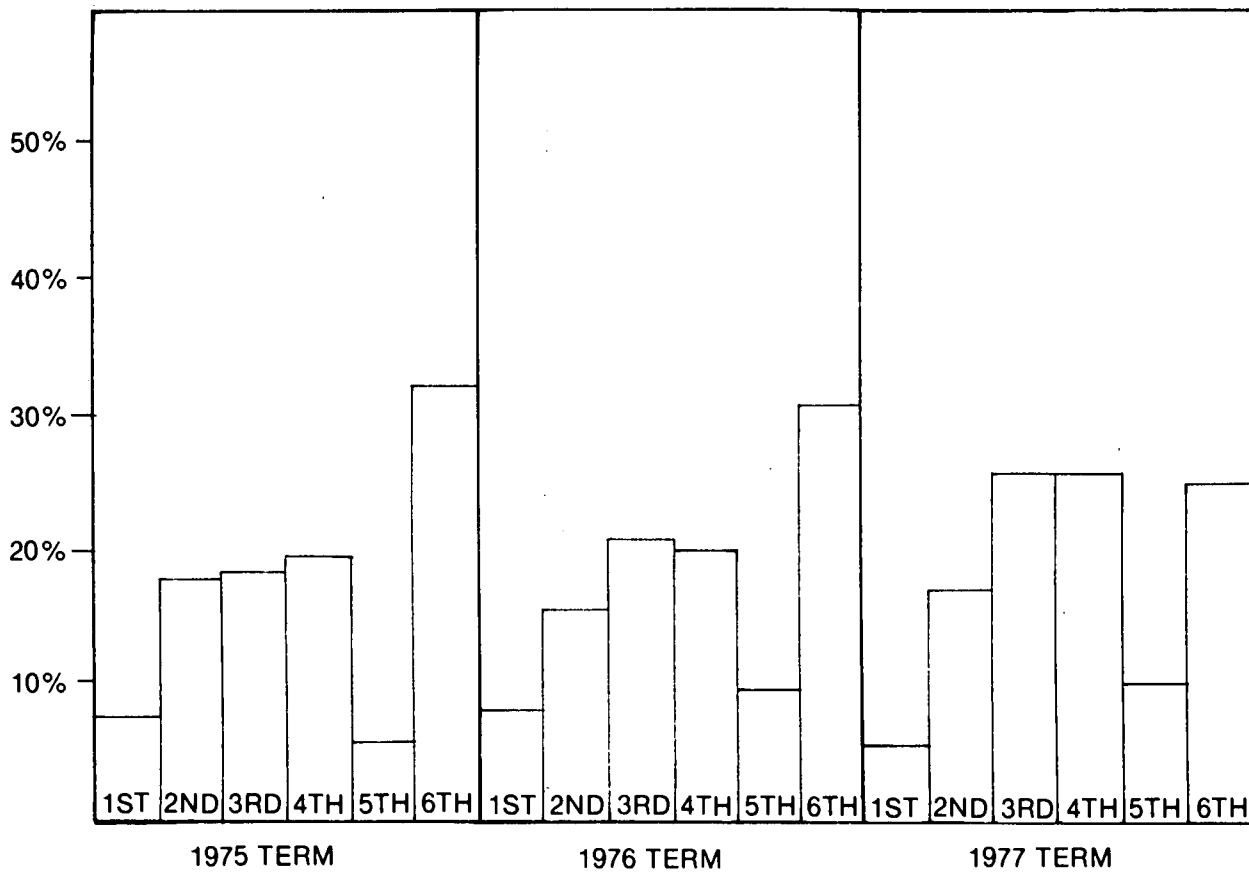
In addition to its regular appellate duties, the Court of Appeals also admitted 681 persons to the practice of law during 1977-78 and reviewed the recommendation of the State Board of Law Examiners as to the results of 63 examinations of attorneys from other jurisdictions desiring admission to the Maryland Bar. The Court also conducted 12 disciplinary proceedings of members of the Maryland Bar.



APPEALS DOCKETED BY TERM  
COURT OF APPEALS



ORIGIN OF APPEALS  
BY APPELLATE JUDICIAL CIRCUIT  
COURT OF APPEALS



CASES DISMISSED PRIOR  
TO  
ARGUMENT OR SUBMISSION

TERM	FILED	DISMISSED	PERCENTAGE
1974	250	40	16.0
1975	173	13	7.5
1976	166	7	4.2
1977	174	6	3.4

AVERAGE TIME INTERVALS  
FOR DISPOSITION OF APPEALS  
(In Months)

	Original Filing To Disposition In Circuit Court	Disposition In Circuit Court To Docketing In Court of Appeals	Docketing To Argument	Argument To Decision
1973	15.4	2.5	4.8	1.2
1974	16.4	6.5	5.3	1.7
1975	12.7	6.2	2.2	1.1
1976	15.4	7.2	2.6	1.6
1977	13.9	7.1	2.7	1.7

STATUS OF THE CALENDAR

FISCAL YEAR 1977-78

Regular Docket

	CIVIL	CRIMINAL	TOTAL
APPEALS	134	53	187
1976 Term	8	5	13
1977 Term	126	48	174
DISPOSED OF	118	41	159
During Fiscal Year 1976-77	8	1	9
Dismissed Prior to Argument	6		6
Transferred to Court of Special Appeals	2		2
Considered and Decided	102	40	142
PENDING	16	12	28

MISCELLANEOUS DOCKET

(Applications for Certiorari)

	Granted	Dismissed	Denied	Withdrawn	Total
Applications					491
CIVIL	44	3	170	1	218
CRIMINAL	48	1	224		273

## DISPOSITION OF CASES DURING FISCAL YEAR

1977-78

	<u>LAW</u>	<u>EQUITY</u>	<u>CRIMINAL</u>	<u>TOTALS</u>
Affirmed	32	17	17	66
Reversed	27	8	15	50
Dismissed - Opinion Filed	3	1	3	7
Dismissed Without Opinion	3	3	4	10
Remanded Without Affirmance or Reversal	2	1		3
Affirmed in Part, Reversed in Part	2	3	1	6
Advanced and Disposed of in 1976-77 Fiscal Year	7	1	1	9
Dismissed Prior to Argument or Submission	4	2		6
Transferred to Court of Special Appeals	1	1		2
Pending at Close of Fiscal Year	11	5	12	28
TOTALS	92	42	53	187

THE COURT OF SPECIAL APPEALS



During the fiscal year July 1, 1977, through June 30, 1978, the Court of Special Appeals had before it for consideration 1,565 regular appeals, 1,412 of which were from the 1977 Term docket while the remaining 153 were from the 1976 Term docket. The latter number of appeals had been heard during fiscal year 1976-77 but were not disposed of by way of opinions being filed due to the constraints of time.

Of the 1,412 appeals on the 1977 Term docket, 402 (28.5 percent) originated in Baltimore City (Sixth Appellate Judicial Circuit) while the third and fourth appellate circuits recorded 268 and 257 respectively. Figures of 186, 154, and 145 were tallied for the second, fifth and first circuits. Montgomery and Prince George's Counties each noted 206 appeals, followed by Baltimore County with 149 and Anne Arundel with 106. The total 667 appeals for these four counties, when added to the 402 for Baltimore City accounted for slightly more than three-fourths (75.7 percent) of the 1977 Term docket.

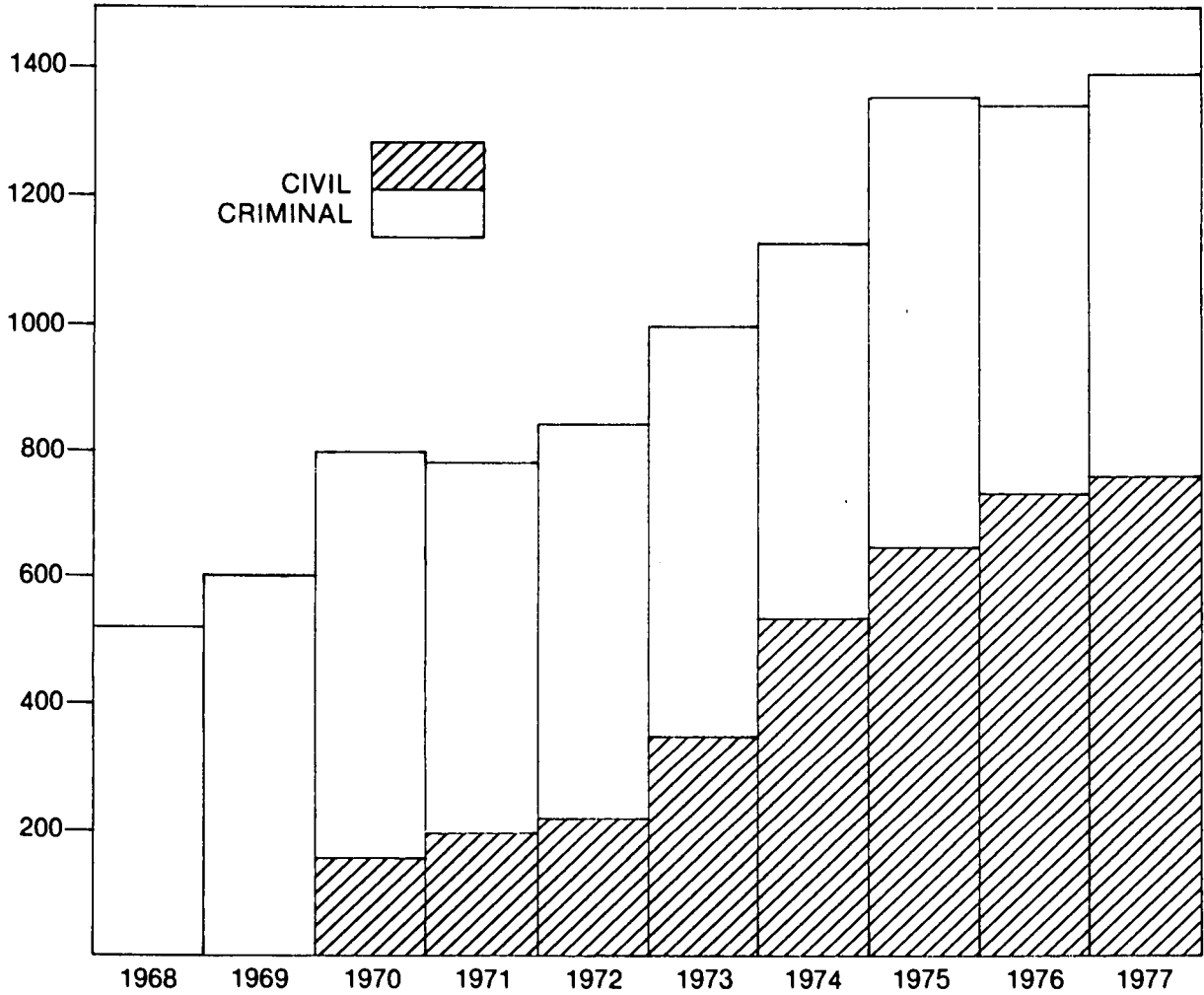
By the end of the 1977-78 fiscal year, the Court of Special Appeals had disposed of all but 112 appeals. Nearly all of that number had been argued but not concluded by opinion as of June 30, 1978. The Court actually considered and decided 1,010 appeals and filed 999 opinions in their disposition. Reported opinions numbered 209 and unreported opinions totalled 790, the latter of which were all per

curiam. Members of the Court also filed two dissenting and three concurring opinions. Appeals were heard in an average 4.9 months after docketing and decided in an additional 0.7 of a month. The latter figure was quite remarkable in view of the high volume caseload of the Court.

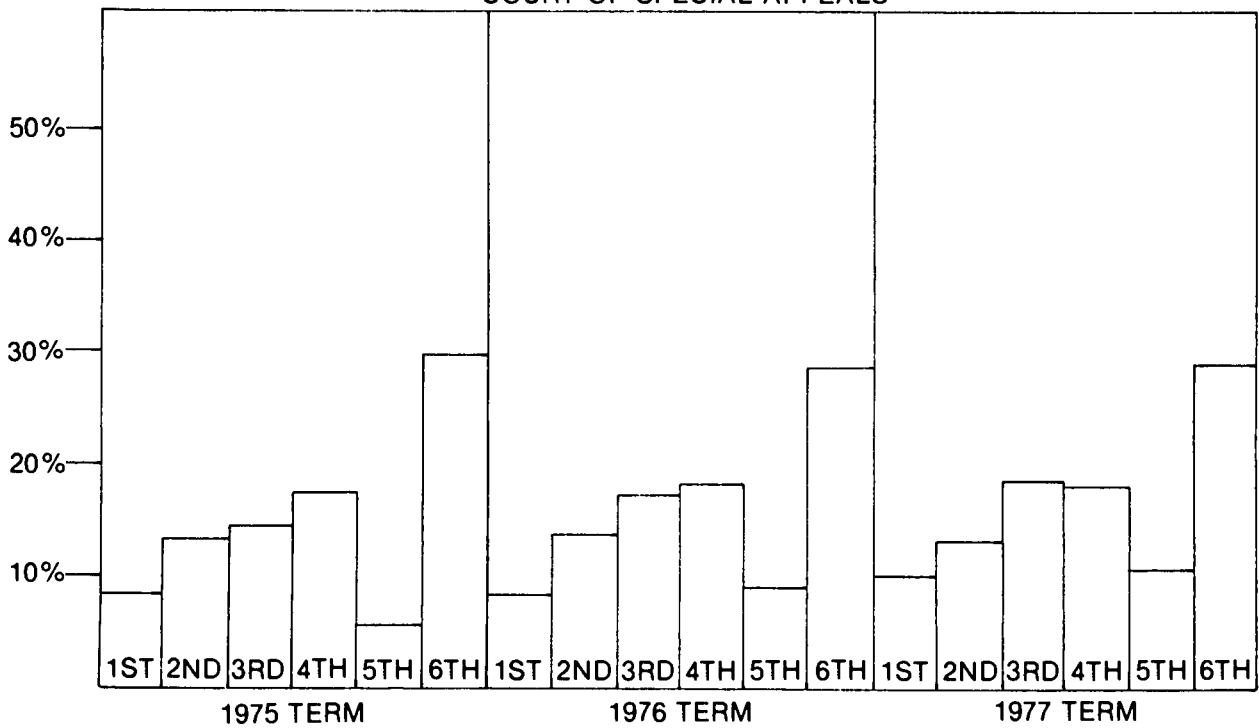
In addition to the disposition of its regular appellate caseload, the Court also considered 253 applications for leave to appeal during 1977-78. It granted 21 of these applications (8.3 percent) and denied 227 (89.7 percent) with 5 petitions being disposed of otherwise.



APPEALS DOCKETED BY TERM  
COURT OF SPECIAL APPEALS



ORIGIN OF APPEALS  
BY APPELLATE JUDICIAL CIRCUIT  
COURT OF SPECIAL APPEALS



STATUS OF THE CALENDAR

FISCAL YEAR 1977-78

Regular Docket

	CIVIL	CRIMINAL	TOTAL
APPEALS	812	753	1565
1976 Term	84	69	153
1977 Term	728	684	1412
DISPOSED OF	744	709	1453
Transferred to Court of Appeals	78	5	83
Dismissed Prior to Argument	234	123	357
Stayed	2	1	3
Considered and Decided	430	580	1010
PENDING	68	44	112

AVERAGE TIME INTERVALS

FOR DISPOSITION OF APPEALS

(In Months)

	Original Filing To Disposition In Court Below	Disposition In Circuit Court To Docketing In Court of Special Appeals	Docketing To Argument	Argument To Decision
1973	10.8	3.2	4.0	1.6
1974	10.3	2.7	4.5	1.7
1975	10.2	2.2	4.2	1.2
1976	11.3	2.6	4.6	1.1
1977	11.5	2.7	4.9	0.7

## DISPOSITION OF CASES DURING FISCAL YEAR

1977-78

	<u>LAW</u>	<u>EQUITY</u>	<u>CRIMINAL</u>	<u>TOTAL</u>
Affirmed	173	110	483	766
Reversed	40	34	54	128
Dismissed - Opinion Filed	24	8	6	38
Remanded Without Affirmance or Reversal	6	3	8	17
Affirmed in Part, Reversed in Part	13	16	29	58
Modified and Affirmed		3		3
Stayed	2		1	3
Transferred to Court of Appeals	50	28	5	83
Dismissed Prior to Argument or Submission	159	75	123	357
Pending at Close of Fiscal Year	41	27	44	112
Totals	508	304	753	1565

## DISPOSITION OF APPLICATIONS FOR LEAVE TO APPEAL

DURING FISCAL YEAR 1977-78

Granted	Dismissed	Denied	Remanded	Total
21	1	227	4	253



THE CIRCUIT COURTS



Total filings in the circuit courts of Maryland totaled 132,921 for fiscal year 1977-78. This figure includes law, equity, juvenile, and criminal cases. Juvenile causes heard at the District Court level in Montgomery County which account for 2,109 cases are not included in the total. The total caseload for the past year consisted of 40.3 percent of the filings in equity followed by criminal proceedings with 26.9 percent, juvenile causes with 16.9 percent, and law actions with 15.9 percent.

Equity filings increased by 15.0 percent over 1976-77 while law filings climbed by 8.9 percent. Criminal filings decreased by 17.2 percent and juvenile causes dropped by 5.7 percent.

Terminations numbered 117,522 at the circuit court level for the four major categories, a drop of 6.0 percent over the 125,073 tallied in 1976-77. This figure does not include 2,295 terminations for juvenile causes in Montgomery County. In all categories the number of filings exceeded the number of terminations.

Appeals from the District Court and administrative agencies reported by the circuit court clerks totaled 7,459 statewide, a decrease of 3.3 percent from the 7,711 appeals filed in 1976-77. Decisions appealed from administrative agencies numbered 1,985 of which 766 or 38.6 percent originated in Baltimore City. The ratio of cases appealed

compared to the caseload of the District Court has remained at 0.5 percent for the past three years.

Law cases disposed of by trial in 1977-78 totaled 2,393, a decrease of 5.8 percent over the 2,539 cases reported for 1976-77. Trials of law cases accounted for 12.4 percent of all law dispositions with the balance being disposed of by settlement or dismissal. Jury trials were held in 1,071 cases (44.8 percent) and before a court setting without a jury in 1,322 (55.2 percent). A total of 1,124 law trials were conducted in the four largest counties and accounted for 47.0 percent of all law trials. Baltimore City recorded 660 law trials and registered 27.6 percent of the total.

Time spans reflecting the average time required between filing and hearing or trial have been tabulated and are included herein on a jurisdictional basis for law, equity, juvenile, and criminal proceedings. For comparison purposes time spans for 1976-77 have also been included. Differences in the figures between the two years may be the result of the method of computation. The figures are derived by a straight numerical average and are often inflated or deflated by a few large or small numbers.

Divorce proceedings accounted for 53.0 percent (28,526) of total equity filings in 1977-78. There were 14,730 total hearings held in equity matters, a slight increase of 322



hearings over the 14,408 held in 1976-77.

A total of 8,789 criminal cases were tried in the state this year, of which 1,526 were jury trials. Baltimore City conducted 3,418 trials or 38.9 percent of the state total followed by Baltimore County with 1,457 trials and 16.6 percent of the total. During th 1977-78 fiscal year, 481 habeas corpus petitions were filed, an increase of 26 from the previous year's total of 455. Post convictions also increased in number from 441 to 593.

Applications for review of criminal sentences amounted to 273, of which 12 were withdrawn by the applicants. There were 322 applications in 1976-77 and 478 in 1975-76. This year the original sentence was decreased in 13 instances and unchanged in 232. No sentence was increased. Since the inception of the procedure to review criminal sentences in 1966, 3,432 applications have been filed. During this period 218 sentences have been decreased (6.4 percent).

During 1977-78, 22,472 juvenile causes were filed in the circuit courts. There were 2,109 juvenile causes filed in the District Court for Montgomery County. Combined, these figures total 24,581 and represent a 8.0 percent decrease over the 26,739 juvenile causes filed in both the circuit courts and District Court for Montgomery County in 1976-77. Delinquency cases totaled 20,985 of which 1,378 were from Montgomery County, and represented 85.4 percent of

the workload.

The number of juvenile causes terminated was lower in number than filings and totaled 22,323 in the circuit courts. There were 2,295 juvenile terminations in Montgomery County. The 1977-78 combined figure of 24,618 was lower than the 1976-77 figure of 27,916 by 11.8 percent. Generally, juvenile causes reached the hearing stage more quickly than law, equity or criminal matters.

Detailed tables of the circuit court workload follow.

# TABLE A-1

LAW, CRIMINAL, EQUITY, AND JUVENILE

FILED, TERMINATED AND PENDING

IN THE FIRST CIRCUIT OF MARYLAND

JULY 1, 1977 - JUNE 30, 1978

	PENDING	FILED			TERMINATED			PENDING
	BEGINNING OF YEAR	CASES AND APPEALS	CASES	APPEALS	CASES AND APPEALS	CASES	APPEALS	END OF YEAR
TOTAL - FIRST CIRCUIT	2644	5589	5294	295	5877	5601	276	2356
LAW	680	934	780	154	925	800	125	689
EQUITY	1219	3142	3142	XX	3069	3069	XX	1292
CRIMINAL	622	977	836	141	1309	1158	151	290
JUVENILE	123	536	536	XX	574	574	XX	85
DORCHESTER COUNTY	475	1362	1239	123	1384	1279	105	453
LAW	89	181	92	89	162	88	74	108
EQUITY	287	787	787	XX	796	796	XX	278
CRIMINAL	79	206	172	34	225	194	31	60
JUVENILE	20	188	188	XX	201	201	XX	7
SOMERSET COUNTY	305	554	542	12	568	555	13	291
LAW	66	81	74	7	62	59	3	85
EQUITY	184	334	334	XX	335	335	XX	183
CRIMINAL	45	86	81	5	117	107	10	14
JUVENILE	10	53	53	XX	54	54	XX	9
WICOMICO COUNTY	1104	1036	1935	101	2307	2214	93	833
LAW	234	205	171	34	235	208	27	204
EQUITY	427	1319	1319	XX	1270	1270	XX	476
CRIMINAL	369	351	284	67	618	552	66	102
JUVENILE	74	161	161	XX	184	184	XX	51
WORCESTER COUNTY	760	1637	1578	59	1618	1553	65	779
LAW	291	467	443	24	466	445	21	292
EQUITY	321	702	702	XX	668	668	XX	355
CRIMINAL	129	334	299	35	349	305	44	114
JUVENILE	19	134	134	XX	135	135	XX	18

## TABLE A-2

LAW, CRIMINAL, EQUITY, AND JUVENILE  
FILED, TERMINATED AND PENDING  
IN THE SECOND JUDICIAL CIRCUIT OF MARYLAND  
JULY 1, 1977 - JUNE 30, 1978

	PENDING	FILED			TERMINATED			PENDING
	BEGINNING OF YEAR	CASES AND APPEALS	CASES	APPEALS	CASES AND APPEALS	CASES	APPEALS	END OF YEAR
TOTAL - SECOND CIRCUIT	1681	4220	4033	187	4042	3871	171	1859
LAW	320	735	665	70	652	590	62	403
EQUITY	996	2035	2035	XX	1945	1945	XX	1086
CRIMINAL	260	897	780	117	866	757	109	291
JUVENILE	105	553	553	XX	579	579	XX	79
CAROLINE COUNTY	207	572	553	19	555	532	23	224
LAW	44	56	52	4	54	48	6	46
EQUITY	120	336	336	XX	306	306	XX	150
CRIMINAL	33	101	86	15	117	100	17	17
JUVENILE	10	79	79	XX	78	78	XX	11
CECIL COUNTY	872	2030	1929	101	1998	1917	81	904
LAW	125	421	390	31	383	360	23	163
EQUITY	547	935	935	XX	952	952	XX	530
CRIMINAL	145	435	365	70	407	349	58	173
JUVENILE	55	239	239	XX	256	256	XX	38
KENT COUNTY	163	464	446	18	429	406	23	198
LAW	37	73	64	9	60	52	8	50
EQUITY	93	211	211	XX	187	187	XX	117
CRIMINAL	26	120	111	9	119	104	15	27
JUVENILE	7	60	60	XX	63	63	XX	4
QUEEN ANNE'S COUNTY	225	531	507	24	510	486	24	246
LAW	60	76	66	10	86	75	11	50
EQUITY	121	260	260	XX	235	235	XX	146
CRIMINAL	39	124	110	14	123	110	13	40
JUVENILE	5	71	71	XX	66	66	XX	10
TALBOT COUNTY	214	623	598	25	550	530	20	287
LAW	54	109	93	16	69	55	14	94
EQUITY	115	293	293	XX	265	265	XX	143
CRIMINAL	17	117	108	9	100	94	6	34
JUVENILE	28	104	104	XX	116	116	XX	16

TABLE A-3

LAW, CRIMINAL, EQUITY, AND JUVENILE  
 FILED, TERMINATED AND PENDING  
 IN THE THIRD JUDICIAL CIRCUIT OF MARYLAND  
 JULY 1, 1977 - JUNE 30, 1978

	PENDING	FILED			TERMINATED			PENDING
	BEGINNING OF YEAR	CASES AND APPEALS	CASES	APPEALS	CASES AND APPEALS	CASES	APPEALS	END OF YEAR
TOTAL - THIRD CIRCUIT	12,200	18,020	16,897	1,123	16,182	15,225	957	14,038
LAW	3,355	3,074	2,583	491	2,479	2,124	355	3,950
EQUITY	7,162	8,085	8,085	XX	7,287	7,287	XX	7,960
CRIMINAL	1,487	4,681	4,049	632	4,476	3,874	602	1,692
JUVENILE	196	2,180	2,180	XX	1,940	1,940	XX	436
BALTIMORE COUNTY	10,313	14,723	13,766	957	13,208	12,408	800	11,828
LAW	2,819	2,621	2,196	425	2,066	1,778	288	3,374
EQUITY	6,177	6,406	6,406	XX	5,718	5,718	XX	6,865
CRIMINAL	1,159	4,103	3,571	532	3,884	3,372	512	1,378
JUVENILE	158	1,593	1,593	XX	1,540	1,540	XX	211
HARFORD COUNTY	1,887	3,297	3,131	166	2,974	2,817	157	2,210
LAW	536	453	387	66	413	346	67	576
EQUITY	985	1,679	1,679	XX	1,569	1,569	XX	1,095
CRIMINAL	328	578	478	100	592	502	90	314
JUVENILE	38	587	587	XX	400	400	XX	225

TABLE A-4

LAW, CRIMINAL, EQUITY, AND JUVENILE  
 FILED, TERMINATED AND PENDING  
 IN THE FOURTH JUDICIAL CIRCUIT OF MARYLAND  
 JULY 1, 1977 - JUNE 30, 1978

	PENDING	FILED			TERMINATED			PENDING
	BEGINNING OF YEAR	CASES AND APPEALS	CASES	APPEALS	CASES AND APPEALS	CASES	APPEALS	END OF YEAR
TOTAL - FOURTH CIRCUIT	5,896	5,120	4,834	286	4,526	4,276	250	6,490
LAW	2,245	1,015	879	136	842	742	100	2,418
EQUITY	3,294	2,313	2,313	XX	1,911	1,911	XX	3,696
CRIMINAL	239	812	662	150	774	624	150	277
JUVENILE	118	980	980	XX	999	999	XX	99
ALLEGANY COUNTY	2,316	1,873	1,738	135	1,422	1,344	78	2,767
LAW	661	445	388	57	253	239	14	853
EQUITY	1,510	815	815	XX	581	581	XX	1,744
CRIMINAL	113	204	126	78	177	113	64	140
JUVENILE	32	409	409	XX	411	411	XX	30
GARRETT COUNTY	382	645	635	10	614	605	9	413
LAW	118	141	135	6	129	123	6	130
EQUITY	196	272	272	XX	240	240	XX	228
CRIMINAL	45	89	85	4	94	91	3	40
JUVENILE	23	143	143	XX	151	151	XX	15
WASHINGTON COUNTY	3,198	2,602	2,461	141	2,490	2,327	163	3,310
LAW	1,466	429	356	73	460	380	80	1,435
EQUITY	1,588	1,226	1,226	XX	1,090	1,090	XX	1,724
CRIMINAL	81	519	451	68	503	420	83	97
JUVENILE	63	428	428	XX	437	437	XX	54

# TABLE A-5

LAW, CRIMINAL, EQUITY, AND JUVENILE  
FILED, TERMINATED AND PENDING  
IN THE FIFTH JUDICIAL CIRCUIT OF MARYLAND  
JULY 1, 1977 - JUNE 30, 1978

	PENDING	FILED			TERMINATED			PENDING
	BEGINNING OF YEAR	CASES AND APPEALS	CASES	APPEALS	CASES AND APPEALS	CASES	APPEALS	END OF YEAR
TOTAL - FIFTH CIRCUIT	12,585	17,533	16,537	1,016	15,133	14,280	853	15,005
LAW	2,510	3,686	3,263	423	3,084	2,815	269	3,112
EQUITY	7,300	7,991	7,991	XX	6,231	6,231	XX	9,060
CRIMINAL	1,670	3,311	2,718	593	3,078	2,494	584	1,903
JUVENILE	1,105	2,565	2,565	XX	2,740	2,740	XX	930
ANNE ARUNDEL COUNTY	8,681	12,705	12,147	558	11,443	10,946	497	9,943
LAW	1,534	2,548	2,271	277	2,259	2,048	211	1,823
EQUITY	5,352	6,105	6,105	XX	4,958	4,958	XX	6,499
CRIMINAL	901	2,274	1,993	281	2,215	1,929	286	960
JUVENILE	894	1,778	1,778	XX	2,011	2,011	XX	661
CARROLL COUNTY	1,182	2,044	1,836	208	1,628	1,443	185	1,598
LAW	278	408	342	66	321	287	34	365
EQUITY	569	837	837	XX	585	585	XX	821
CRIMINAL	294	435	293	142	404	253	151	325
JUVENILE	41	364	364	XX	318	318	XX	87
HOWARD COUNTY	2,722	2,804	2,554	250	2,062	1,891	171	3,464
LAW	698	730	650	80	504	480	24	924
EQUITY	1,379	1,049	1,049	XX	688	688	XX	1,740
CRIMINAL	475	602	432	170	459	312	147	618
JUVENILE	170	423	432	XX	411	411	XX	182

## TABLE A-6

LAW, CRIMINAL, EQUITY, AND JUVENILE  
FILED, TERMINATED AND PENDING  
IN THE SIXTH JUDICIAL CIRCUIT OF MARYLAND  
JULY 1, 1977 - JUNE 30, 1978

	PENDING	FILED			TERMINATED			PENDING
	BEGINNING OF YEAR	CASES AND APPEALS	CASES	APPEALS	CASES AND APPEALS	CASES	APPEALS	END OF YEAR
TOTAL - SIXTH CIRCUIT	19,733	13,669	13,110	559	12,229	11,790	439	21,173
LAW	8,143	2,905	2,641	264	2,615	2,435	180	8,433
EQUITY	7,798	6,544	6,544	XX	5,365	5,365	XX	8,977
CRIMINAL	1,073	1,935	1,640	295	1,740	1,481	259	1,268
JUVENILE	2,719	2,285	2,285	XX	2,509	2,509	XX	2,495
FREDERICK COUNTY	935	2,353	2,275	78	2,286	2,206	80	1,002
LAW	223	268	238	30	305	268	37	186
EQUITY	559	1,540	1,540	XX	1,443	1,443	XX	656
CRIMINAL	76	369	321	48	324	281	43	121
JUVENILE	77	176	176	XX	214	214	XX	39
MONTGOMERY COUNTY	18,798	11,316	10,835	481	9,943	9,584	359	20,171
LAW	7,920	2,637	2,403	234	2,310	2,167	143	8,247
EQUITY	7,239	5,004	5,004	XX	3,922	3,922	XX	8,321
CRIMINAL	997	1,566	1,319	247	1,416	1,200	216	1,147
JUVENILE*	2,642	2,109	2,109	XX	2,295	2,295	XX	2,456

\*Juvenile Causes processed at District Court level.



# TABLE A-7

LAW, CRIMINAL, EQUITY, AND JUVENILE  
 FILED, TERMINATED AND PENDING  
 IN THE SEVENTH JUDICIAL CIRCUIT OF MARYLAND  
 JULY 1, 1977 - JUNE 30, 1978

	PENDING	FILED			TERMINATED			PENDING
	BEGINNING OF YEAR	CASES AND APPEALS	CASES	APPEALS	CASES AND APPEALS	CASES	APPEALS	END OF YEAR
TOTAL - SEVENTH CIRCUIT	13,261	22,496	21,832	664	20,380	19,864	516	15,377
LAW	2,692	3,260	3,013	247	2,940	2,754	186	3,012
EQUITY	8,268	9,742	9,742	XX	8,449	8,449	XX	9,561
CRIMINAL	1,459	3,604	3,187	417	2,921	2,591	330	2,142
JUVENILE	842	5,890	5,890	XX	6,070	6,070	XX	662
CALVERT COUNTY	529	994	955	39	947	922	25	576
LAW	108	123	101	22	129	121	8	102
EQUITY	251	431	431	XX	395	395	XX	287
CRIMINAL	90	234	217	17	183	166	17	141
JUVENILE	80	206	206	XX	240	240	XX	46
CHARLES COUNTY	719	1,876	1,797	79	1,810	1,726	84	785
LAW	151	189	175	14	212	196	16	128
EQUITY	348	675	675	XX	586	586	XX	437
CRIMINAL	148	480	415	65	501	433	68	127
JUVENILE	72	532	532	XX	511	511	XX	93
PRINCE GEORGE'S COUNTY	11,240	18,278	17,769	509	16,378	16,006	372	13,140
LAW	2,238	2,780	2,580	200	2,425	2,277	148	2,593
EQUITY	7,155	7,880	7,880	XX	6,750	6,750	XX	8,285
CRIMINAL	1,190	2,734	2,425	309	2,106	1,882	224	1,818
JUVENILE	657	4,884	4,884	XX	5,097	5,097	XX	444
ST. MARY'S COUNTY	773	1,348	1,311	37	1,245	1,210	35	876
LAW	195	168	157	11	174	160	14	189
EQUITY	514	756	756	XX	718	718	XX	552
CRIMINAL	31	156	130	26	131	110	21	56
JUVENILE	33	268	268	XX	222	222	XX	79

TABLE A-8

LAW, CRIMINAL, EQUITY, AND JUVENILE  
 FILED, TERMINATED AND PENDING  
 IN THE EIGHTH JUDICIAL CIRCUIT OF MARYLAND  
 JULY 1, 1977 - JUNE 30, 1978

	PENDING	FILED			TERMINATED			PENDING
		CASES AND APPEALS	CASES	APPEALS	CASES AND APPEALS	CASES	APPEALS	
TOTAL - EIGHTH CIRCUIT BALTIMORE CITY	37,831	48,363	45,034	3,329	41,448	38,819	2,629	44,746
TOTAL - LAW COURTS	11,902	5,480	4,401	1,079	5,813	5,075	738	11,569
TOTAL - EQUITY COURTS	17,575*	13,779	13,779	XX	9,080	9,080	XX	22,274
TOTAL - CRIMINAL COURTS	6,879	19,512	17,262	2,250	17,348	15,457	1,891	9,043
TOTAL - JUVENILE COURT	1,475	9,592	9,592	XX	9,207	9,207	XX	1,860

TABLE A-9

LAW, CRIMINAL, EQUITY, AND JUVENILE CASES  
 FILED, TERMINATED AND PENDING  
 IN THE STATE OF MARYLAND  
 JULY 1, 1977 - JUNE 30, 1978

	PENDING	FILED			TERMINATED			PENDING
		CASES AND APPEALS	CASES	APPEALS	CASES AND APPEALS	CASES	APPEALS	
TOTAL - STATE OF MARYLAND	105,831	135,030	127,571	7,459	119,817	113,726	6,091	121,044
LAW	31,847	21,089	18,225	2,864	19,350	17,335	2,015	33,586
EQUITY	53,612	53,631	53,631	XX	43,337	43,337	XX	63,906
CRIMINAL	13,689	35,729	31,134	4,595	32,512	28,436	4,076	16,906
JUVENILE	6,683	24,581	24,581	XX	24,618	24,618	XX	6,646

\*Figure adjusted from that shown for pending at end of year 1976-77 as a result of a detailed audit conducted in October, 1977, by the Clerk of Circuit Court No. 2.

## TABLE B

DISTRIBUTION, WITH PERCENTAGES, OF CASES AND APPEALS FILED

IN THE CIRCUIT COURTS OF MARYLAND

JULY 1, 1977 THROUGH JUNE 30, 1978

	LAW		EQUITY		CRIMINAL		JUVENILE		TOTALS	
	Number	Percent	Number	Percent	Number	Percent	Number	Percent	Number	Percent
FIRST CIRCUIT	934	17.0	3,142	56.0	977	17.0	536	10.0	5,589	100.0
Dorchester	181	13.0	787	58.0	206	15.0	188	14.0	1,362	100.0
Somerset	81	15.0	334	60.0	86	15.0	53	10.0	554	100.0
Wicomico	205	10.0	1,319	65.0	351	17.0	161	8.0	2,036	100.0
Worcester	467	29.0	702	43.0	334	20.0	134	8.0	1,637	100.0
SECOND CIRCUIT	735	18.0	2,035	48.0	897	21.0	553	13.0	4,220	100.0
Caroline	56	10.0	336	59.0	101	17.0	79	14.0	572	100.0
Cecil	421	21.0	935	46.0	435	21.0	239	12.0	2,030	100.0
Kent	73	16.0	211	45.0	120	26.0	60	13.0	464	100.0
Queen Anne's	76	14.0	260	49.0	124	23.0	71	14.0	531	100.0
Talbot	109	17.0	293	47.0	117	19.0	104	17.0	623	100.0
THIRD CIRCUIT	3,074	17.0	8,085	45.0	4,681	26.0	2,180	12.0	18,020	100.0
Baltimore	2,621	18.0	6,406	43.0	4,103	28.0	1,593	11.0	14,723	100.0
Harford	453	14.0	1,679	51.0	578	17.0	587	18.0	3,297	100.0
FOURTH CIRCUIT	1,015	20.0	2,313	45.0	812	16.0	980	19.0	5,120	100.0
Allegany	445	24.0	815	43.0	204	11.0	409	22.0	1,873	100.0
Garrett	141	22.0	272	42.0	89	14.0	143	22.0	645	100.0
Washington	429	17.0	1,226	47.0	519	20.0	428	16.0	2,602	100.0
FIFTH CIRCUIT	3,686	21.0	7,991	45.0	3,311	19.0	2,565	15.0	17,553	100.0
Anne Arundel	2,548	20.0	6,105	48.0	2,274	18.0	1,778	14.0	12,705	100.0
Carroll	408	20.0	837	41.0	435	21.0	364	18.0	2,044	100.0
Howard	730	26.0	1,049	37.0	602	22.0	423	15.0	2,804	100.0
SIXTH CIRCUIT	2,905	21.0	6,544	48.0	1,935	14.0	2,285	17.0	13,669	100.0
Frederick	268	11.0	1,540	65.0	369	16.0	176	8.0	2,353	100.0
Montgomery*	2,637	23.0	5,004	44.0	1,566	14.0	2,109	19.0	11,316	100.0
SEVENTH CIRCUIT	3,260	15.0	9,742	43.0	3,604	16.0	5,890	26.0	22,496	100.0
Calvert	123	12.0	431	43.0	234	24.0	206	21.0	994	100.0
Charles	189	10.0	675	36.0	480	26.0	532	28.0	1,876	100.0
Prince George's	2,780	15.0	7,880	43.0	2,734	15.0	4,884	27.0	18,278	100.0
St. Mary's	168	12.0	756	56.0	156	12.0	268	20.0	1,348	100.0
EIGHTH CIRCUIT	5,480	11.0	13,779	29.0	19,512	40.0	9,592	20.0	48,363	100.0
Baltimore City	5,480	11.0	13,779	29.0	19,512	40.0	9,592	20.0	48,363	100.0
STATE	21,089	16.0	53,631	40.0	35,729	26.0	24,581	18.0	135,030	100.0

\*Juvenile Causes heard at District Court level.

# TABLE C-1

## DISTRIBUTION OF CASES FILED IN THE CIRCUIT COURTS

JULY 1, 1977 - JUNE 30, 1978

	Dorchester	Somerset	Wicomico	Worcester	Caroline	Cecil	Kent	Queen Anne's	Talbot	Baltimore	Harford	Allegheny	Garrett	Washington	Anne Arundel	Carroll	Howard	Frederick	Montgomery	Calvert	Charles	Prince George's	St. Mary's	Baltimore City	TOTALS
<b>LAW - TOTALS</b>	181	81	205	467	56	421	73	76	109	2621	435	445	141	429	2548	408	730	268	2637	123	189	2780	168	5480	21,089
<b>TORT:</b>																									
Motor Tort	27	9	42	37	14	54	11	10	26	850	125	40	9	65	429	40	92	62	669	20	52	947	52	1787	5469
Other Tort	14	1	5	14	2	9	2	2	8	328	26	12	11	24	121	33	59	44	379	10	19	484	14	583	2204
Consent Cases	0	0	0	0	2	1	0	1	0	24	1	6	4	5	6	1	0	0	23	0	0	40	4	109	229
<b>CONTRACT</b>	9	9	52	77	15	31	31	19	16	627	74	79	33	191	636	93	174	81	1074	16	68	866	40	868	5179
<b>CONFESSIONS</b>	22	13	48	47	5	73	14	8	12	136	63	144	7	39	771	133	282	28	119	17	24	84	21	148	2258
<b>CONDEMNATION</b>	1	2	1	1	2	2	1	1	3	100	6	2	0	4	93	3	5	4	22	0	2	49	5	104	413
<b>OTHER LAW</b>	11	40	22	264	9	209	5	16	23	86	89	105	71	20	184	13	28	16	75	37	6	79	20	564	1992
<b>HABEAS CORPUS:</b>																									
Writs by Prisoners	4	0	0	1	3	11	0	9	5	23	3	0	0	7	26	15	9	3	37	1	4	23	1	138	323
Other	4	0	1	0	0	0	0	0	0	22	0	0	0	1	5	11	1	0	5	0	0	8	0	100	158
<b>APPEALS:</b>																									
From District Court	6	2	17	15	1	11	3	2	4	134	21	12	1	16	99	15	22	12	97	0	5	65	6	313	879
From Administrative Agencies	83	5	17	9	3	20	6	8	12	291	45	45	5	57	178	51	58	18	137	22	9	135	5	766	1985
<b>EQUITY - TOTALS</b>	787	334	1319	702	336	935	211	260	293	6406	1679	815	272	1226	6105	837	1049	1540	5004	431	675	7880	756	13,799	53,631
<b>ADOPTION</b>	17	2	56	13	12	39	5	11	9	232	79	48	19	62	199	41	29	65	175	19	34	356	38	319	1879
<b>Petitions for</b>																									
Guardianship	27	0	35	14	0	9	1	3	0	54	15	2	7	14	27	8	5	27	179	7	0	73	4	121	632
<b>DIVORCE, NULLITY, MAINTENANCE</b>	271	176	566	260	132	580	153	95	180	4208	764	569	156	679	3323	533	714	824	2721	170	305	5201	450	5496	28,526
<b>PATERNITY PETITIONS</b>	357	95	381	164	51	126	11	41	47	407	98	58	2	70	1239	13	24	264	96	126	120	264	124	4482	8660
<b>FORECLOSURE</b>	19	20	68	144	19	44	10	24	7	181	76	31	12	35	205	57	54	86	224	39	68	862	46	615	2946
<b>OTHER</b>	96	41	213	107	122	137	31	86	50	1324	647	107	76	366	1112	185	223	274	1609	70	148	1124	94	2746	10,988
<b>CRIMINAL - TOTALS</b>	206	86	351	334	101	435	120	124	117	4103	578	204	89	519	2274	435	602	369	1566	234	480	2734	156	19,512	35,729
<b>NONSUPPORT</b>	0	0	0	1	0	0	0	0	0	676	1	4	0	1	576	1	0	5	1	0	0	0	0	1089	2355
<b>INDICTMENT</b>	1	0	34	14	0	193	22	37	4	1233	262	38	5	71	1030	7	113	5	755	122	247	1627	63	3313	9196
<b>CRIMINAL INFORMATION</b>	93	66	198	191	57	45	65	35	79	1100	3	58	70	132	119	170	221	247	73	95	12	32	57	3773	6991
<b>APPEALS FROM DISTRICT COURT</b>																									
Motor Vehicle	11	1	21	16	6	34	5	7	5	328	69	30	2	22	142	82	109	28	115	8	31	137	9	1575	2793
Criminal	23	4	46	19	9	36	4	7	4	204	31	48	2	46	139	60	61	20	132	9	34	172	17	675	1802
<b>POST CONVICTION</b>	8	1	10	9	4	13	0	14	17	84	8	0	3	3	25	1	0	2	15	0	10	74	0	292	593
<b>JURY TRIAL - DISTRICT COURT</b>	70	14	42	84	25	114	24	24	8	478	204	26	7	244	243	114	98	62	475	0	146	692	10	8795	11,999
<b>JUVENILE - TOTALS</b>	188	53	161	134	79	239	60	71	104	1593	587	409	143	428	1778	364	423	176	2109	206	532	4884	268	9592	24,581
<b>DELINQUENCY</b>	131	42	131	109	42	208	27	57	82	1309	499	211	110	314	1462	301	374	138	1378	178	412	4194	195	9081	20,985
<b>C.I.N.A. or C.I.N.S.*</b>	57	11	30	24	37	31	33	14	22	280	88	125	27	103	316	63	49	37	716	28	118	689	71	511	3480
<b>ADULT</b>	0	0	0	1	0	0	0	0	0	4	0	73	6	11	0	0	0	1	15	0	2	1	2	0	116

\*Child in need of assistance or child in need of supervision.

# TABLE C-2

## DISTRIBUTION OF CASES TERMINATED IN THE CIRCUIT COURTS

JULY 1, 1977 - JUNE 30, 1978

	Dorchester	Somerset	Wicomico	Worcester	Caroline	Cecil	Kent	Queen Anne's	Talbot	Baltimore	Harford	Allegany	Garrett	Washington	Anne Arundel	Carroll	Howard	Frederick	Montgomery	Calvert	Charles	Prince George's	St. Mary's	Baltimore City	TOTALS	
<b>LAW - TOTALS</b>	162	62	235	466	54	383	60	86	69	2066	413	253	129	460	2259	321	504	305	2310	129	212	2425	174	5813	19,350	
<b>TORT:</b>																										
Motor Tort	24	3	35	29	10	21	10	11	9	745	130	27	8	70	379	46	60	86	621	26	52	875	60	2658	5995	
Other Tort	8	0	10	5	2	8	4	4	6	235	21	8	2	21	115	17	26	46	450	12	30	421	15	459	1925	
Consent Cases	2	0	1	0	2	0	0	1	0	25	1	6	5	11	7	1	1	1	24	0	0	40	5	135	268	
<b>CONTRACT</b>	15	3	95	71	17	30	17	17	7	442	60	27	30	184	518	62	94	88	790	8	77	692	30	763	4137	
<b>CONFESED JUDGMENTS</b>	22	12	49	47	6	81	14	9	13	131	63	147	8	40	765	130	273	29	129	12	24	84	19	142	2249	
<b>CONDEMNATION</b>	0	4	8	1	1	0	2	1	0	67	4	1	1	6	90	1	4	2	33	11	1	36	13	64	351	
<b>OTHER LAW</b>	9	37	10	291	7	209	5	22	17	95	65	23	69	36	147	8	14	13	84	50	11	109	17	623	1971	
<b>HABEAS CORPUS:</b>																										
Writs by Prisoners	4	0	0	1	3	11	0	10	3	15	2	0	0	11	19	15	7	3	33	2	1	13	1	137	291	
Other	4	0	0	0	0	0	0	0	0	23	0	0	0	1	8	7	1	0	3	0	0	7	0	94	148	
<b>APPEALS:</b>																										
From District Court	4	2	18	11	0	8	2	5	3	93	25	3	2	21	89	11	10	17	76	0	6	52	4	243	705	
From Administrative Agencies	70	1	9	10	6	15	6	6	11	195	42	11	4	59	122	23	14	20	67	8	10	96	10	495	1310	
<b>EQUITY - TOTALS</b>	796	335	1270	668	306	952	187	235	265	5718	1569	581	240	1090	4958	585	688	1443	3922	395	586	6750	718	9080	43,337	
<b>ADOPTION</b>	20	3	56	7	9	42	5	11	10	244	71	38	15	62	169	38	28	59	127	22	30	225	32	233	1556	
Petitions for Guardianship	22	0	22	10	1	10	0	3	1	37	16	1	7	14	23	7	9	24	96	7	0	43	5	113	471	
<b>DIVORCE, NULLITY, MAINTENANCE</b>	264	163	573	230	132	629	140	91	152	3490	717	418	128	684	2748	387	457	776	2437	145	248	4718	403	4034	24,164	
<b>PATERNITY PETITIONS</b>	385	115	364	167	52	114	13	43	46	403	79	29	1	65	1092	10	6	267	50	122	106	209	126	2883	6747	
<b>FORECLOSURE</b>	21	18	53	139	15	45	12	17	8	139	63	23	12	28	127	35	50	55	89	38	54	729	49	334	2153	
<b>OTHER</b>	84	36	202	115	97	112	17	70	48	1405	623	72	77	237	799	108	138	262	1123	61	148	826	103	1483	8246	
<b>CRIMINAL - TOTALS</b>	225	117	618	349	117	407	119	123	100	3884	592	177	94	503	2215	404	459	324	1416	183	501	2106	131	17,348	32,512	
<b>NONSUPPORT</b>	0	0	0	0	0	0	0	0	0	523	3	2	2	2	490	2	1	5	5	0	0	0	0	0	852	1887
<b>INDICTMENT</b>	3	6	47	24	1	192	17	46	2	1191	266	33	5	124	1032	3	77	5	672	115	273	1359	24	3685	9202	
<b>CRIMINAL INFORMATION</b>	114	83	321	210	55	45	66	27	76	1173	3	51	61	73	138	136	154	215	54	44	10	24	75	2327	5535	
<b>APPEALS FROM DISTRICT COURT</b>																										
Motor Vehicle	11	2	20	18	5	28	5	6	3	333	58	33	3	31	151	96	97	29	94	9	36	108	9	1338	2523	
Criminal	20	8	46	26	12	30	10	7	3	179	32	31	0	52	135	55	50	14	122	8	32	116	12	553	1553	
<b>POST CONVICTION</b>	12	1	15	8	7	14	0	10	10	88	14	0	4	4	16	1	0	2	14	0	13	21	0	233	487	
<b>JURY TRIAL - DISTRICT COURT</b>	65	17	169	63	37	98	21	27	6	397	216	27	19	217	253	111	80	54	455	7	137	478	11	8360	11,325	
<b>JUVENILE - TOTALS</b>	201	54	184	135	78	256	63	66	116	1540	400	411	151	437	2011	318	411	214	2295	240	511	5097	222	9207	24,618	
<b>DELINQUENCY</b>	135	43	135	111	41	210	23	52	89	1266	335	202	121	335	1662	263	351	170	1477	215	399	4356	161	8739	20,891	
<b>C.I.N.A. or C.I.N.S.*</b>	66	11	49	23	37	46	40	14	27	270	65	135	22	94	349	54	60	42	790	25	109	739	59	467	3593	
<b>ADULT</b>	0	0	0	0	1	0	0	0	0	4	0	74	8	8	0	1	0	2	28	0	3	2	2	1	134	

\*Child in need of assistance or child in need of supervision.

# TABLE D-1

## COMPARATIVE TABLE

### LAW, EQUITY, CRIMINAL AND JUVENILE

#### FILED AND TERMINATED

	1973-74		1974-75		1975-76		1976-77		1977-78	
	F	T	F	T	F	T	F	T	F	T
<b>FIRST CIRCUIT</b>	3665	3515	4351	4447	4762	4983	5532	4905	5589	5877
Dorchester	687	702	910	922	1104	1155	1491	1344	1362	1384
Somerset	451	380	547	792	638	766	651	594	554	568
Wicomico	1443	1333	1510	1513	1650	1621	1924	1608	2036	2307
Worcester	1084	1100	1384	1220	1370	1441	1466	1359	1637	1618
<b>SECOND CIRCUIT</b>	2976	3468	3353	3087	3667	3203	3861	3950	4220	4042
Caroline	325	395	345	320	432	303	488	537	572	555
Cecil	1370	1690	1704	1550	1728	1537	1772	1710	2030	1998
Kent	402	431	408	362	484	486	534	531	464	429
Queen Anne's	397	397	434	415	488	444	566	589	531	510
Talbot	482	573	462	440	535	433	501	583	623	550
<b>THIRD CIRCUIT</b>	13,376	12,657	14,970	14,020	16,137	15,137	17,454	17,024	18,020	16,182
Baltimore	11,207	10,697	12,393	11,192	13,377	12,291	14,259	14,061	14,723	13,208
Harford	2169	1960	2577	2828	2760	2846	3195	2963	3297	2974
<b>FOURTH CIRCUIT</b>	3856	3739	4355	3591	4620	4264	4564	3756	5120	4526
Allegany	1395	1288	1624	1336	1824	1370	1796	1432	1873	1422
Garrett	435	393	459	408	556	547	600	549	645	614
Washington	2026	2058	2272	1847	2240	2347	2168	1775	2602	2490
<b>FIFTH CIRCUIT</b>	9557	9553	10,886	9820	13,417	11,775	15,852	14,326	17,553	15,133
Anne Arundel	6581	6207	7563	6976	9666	8515	11,580	10,734	12,705	11,443
Carroll	1158	1162	1315	1169	1590	1316	1777	1687	2044	1628
Howard	1818	2184	2008	1675	2161	1944	2495	1905	2804	2062
<b>SIXTH CIRCUIT</b>	10,353	8208	11,084	9583	13,656	12,135	14,023	13,519	13,669	12,229
Frederick	1479	1606	1620	1960	1889	1914	1820	1775	2353	2286
Montgomery*	8874	6602	9464	7623	11,767	10,221	12,203	11,744	11,316	9943
<b>SEVENTH CIRCUIT</b>	16,954	16,306	17,851	17,099	20,177	17,834	20,838	19,962	22,496	20,380
Calvert	708	537	729	787	764	831	944	846	994	947
Charles	1195	1207	1429	1325	1759	1731	1554	1451	1876	1810
Prince George's	13,967	13,600	14,577	13,902	16,565	14,241	17,028	16,368	18,278	16,378
St. Mary's	1084	962	1116	1085	1089	1031	1312	1297	1348	1245
<b>EIGHTH CIRCUIT</b>	42,309	43,959	45,416	44,235	47,839	48,411	53,812	50,970	48,363	41,448
Baltimore City	42,309	43,959	45,416	44,235	47,839	48,411	53,812	50,970	48,363	41,448
<b>STATE</b>	103,046	101,405	112,266	105,882	124,275	117,742	135,936	128,412	135,030	119,817

\*Includes juvenile causes heard at District Court level.

# TABLE D-2

## COMPARATIVE TABLE

### LAW CASES

#### FILED AND TERMINATED

	1973-74		1974-75		1975-76		1976-77		1977-78	
	F	T	F	T	F	T	F	T	F	T
FIRST CIRCUIT	690	654	876	800	685	766	885	717	934	952
Dorchester	90	111	136	153	117	149	143	133	181	162
Somerset	64	54	69	65	76	90	112	97	81	62
Wicomico	167	164	235	223	163	168	248	171	205	235
Worcester	369	325	436	359	329	359	382	316	467	466
SECOND CIRCUIT	543	761	546	499	536	498	589	571	735	652
Caroline	61	65	45	49	41	29	61	52	56	54
Cecil	279	455	295	257	254	256	309	317	421	383
Kent	61	63	57	60	58	60	66	54	73	60
Queen Anne's	58	58	67	48	67	64	86	72	76	86
Talbot	84	120	82	85	116	89	67	76	109	69
THIRD CIRCUIT	2699	2735	2801	2789	2832	2590	2998	2827	3074	2479
Baltimore	2299	2302	2401	2354	2461	2208	2562	2419	2621	2066
Harford	400	433	400	435	371	382	436	408	453	413
FOURTH CIRCUIT	599	610	678	491	737	578	846	586	1015	842
Allegany	232	176	311	201	325	206	412	243	445	253
Garrett	88	88	80	68	111	97	99	89	141	129
Washington	279	346	287	222	301	275	335	254	429	460
FIFTH CIRCUIT	1777	2016	2044	2083	2087	1843	2520	2374	3686	3084
Anne Arundel	979	1124	1168	1378	1245	1154	1657	1661	2548	2259
Carroll	249	265	343	293	304	226	384	311	408	321
Howard	549	627	533	412	538	463	515	402	730	504
SIXTH CIRCUIT	2265	1336	2803	1994	2952	3347	2872	2570	2905	2615
Frederick	284	237	315	287	312	353	216	283	268	305
Montgomery*	1981	1099	2488	1707	2640	2994	2656	2287	2637	2310
SEVENTH CIRCUIT	2762	3192	3103	2842	3163	2915	3126	3611	3260	2940
Calvert	148	150	130	102	152	172	150	152	123	129
Charles	170	206	237	183	191	211	207	207	189	212
Prince George's	2277	2708	2537	2402	2599	2346	2578	3005	2780	2425
St. Mary's	167	128	199	155	221	186	191	247	168	174
EIGHTH CIRCUIT	6170	9312	6079	10,365	5732	7343	5536	6485	5480	5813
Baltimore City	6170	9312	6079	10,365	5732	7343	5536	6485	5480	5813
STATE	17,505	20,616	18,930	21,863	18,724	19,880	19,372	19,741	21,089	19,350

# TABLE D-3

## COMPARATIVE TABLE

### EQUITY CASES

#### FILED AND TERMINATED

	1973-74		1974-75		1975-76		1976-77		1977-78	
	F	T	F	T	F	T	F	T	F	T
FIRST CIRCUIT	1538	1491	1837	2029	2256	2435	2659	2357	3142	3069
Dorchester	286	298	471	448	644	645	906	808	787	796
Somerset	232	194	216	457	225	359	308	250	334	335
Wicomico	633	622	682	716	825	845	851	732	1319	1270
Worcester	387	377	468	408	562	586	594	567	702	668
SECOND CIRCUIT	1343	1630	1661	1505	1812	1497	1851	1855	2035	1945
Caroline	183	237	210	180	248	182	278	312	336	306
Cecil	631	803	886	800	926	779	850	786	935	952
Kent	191	204	192	174	212	208	223	213	211	187
Queen Anne's	129	117	142	159	183	148	258	250	260	235
Talbot	209	269	231	192	243	180	242	294	293	265
THIRD CIRCUIT	5678	4908	6252	5772	7073	6155	7641	7176	8085	7287
Baltimore	4738	4179	5095	4434	5749	4796	6182	5830	6406	5718
Harford	940	729	1157	1338	1324	1359	1459	1346	1679	1569
FOURTH CIRCUIT	1437	1341	1661	1356	1881	1651	1924	1405	2313	1911
Allegany	548	539	651	471	794	574	719	541	815	581
Garrett	166	150	198	214	190	161	232	197	272	240
Washington	723	652	812	671	897	916	973	667	1226	1090
FIFTH CIRCUIT	3865	3493	4345	3466	5449	4461	6928	5806	7991	6231
Anne Arundel	2833	2378	3181	2534	4132	3345	5300	4577	6105	4958
Carroll	477	356	467	450	572	493	750	631	837	585
Howard	555	759	697	482	745	623	878	598	1049	688
SIXTH CIRCUIT	4483	3632	4607	3797	5247	4116	6283	5461	6544	5365
Frederick	705	873	854	1216	1029	1060	1164	1026	1540	1443
Montgomery	3778	2759	3753	2581	4218	3056	5119	4435	5004	3922
SEVENTH CIRCUIT	6630	5792	6308	5570	8396	6376	8222	7199	9742	8449
Calvert	294	202	235	228	355	361	322	336	431	395
Charles	407	424	476	444	727	713	606	506	675	586
Prince George's	5503	4818	5080	4429	6809	4842	6567	5687	7880	6750
St. Mary's	426	348	517	469	505	460	727	670	756	718
EIGHTH CIRCUIT	11,437	9151	11,729	8212	11,320	7893	11,146	8689	13,779	9080
Baltimore City	11,437	9151	11,729	8212	11,320	7893	11,146	8689	13,779	9080
STATE	36,411	31,438	38,400	31,707	43,434	34,584	46,654	39,948	53,631	43,337



# TABLE D-4

## COMPARATIVE TABLE

### CRIMINAL CASES

#### FILED AND TERMINATED

	1973-74		1974-75		1975-76		1976-77		1977-78	
	F	T	F	T	F	T	F	T	F	T
FIRST CIRCUIT	916	857	1058	1040	1253	1277	1318	1136	977	1309
Dorchester	139	132	145	149	185	204	192	155	206	225
Somerset	101	84	202	212	246	242	175	180	86	117
Wicomico	441	328	394	377	449	452	597	464	351	618
Worcester	235	313	317	302	373	379	354	337	334	349
SECOND CIRCUIT	593	561	721	647	823	766	821	858	897	866
Caroline	40	38	42	49	88	51	83	88	101	117
Cecil	281	249	331	293	351	323	379	373	435	407
Kent	79	94	116	77	104	113	134	139	120	119
Queen Anne's	100	94	151	131	176	179	143	159	124	123
Talbot	93	86	81	97	104	100	82	99	117	100
THIRD CIRCUIT	2636	2602	3640	3235	3890	4084	4686	4941	4681	4476
Baltimore	2252	2248	3155	2668	3369	3576	4006	4344	4103	3884
Harford	384	354	485	567	521	508	680	597	578	592
FOURTH CIRCUIT	797	732	912	699	899	1056	795	822	812	774
Allegany	272	218	239	238	245	205	240	259	204	177
Garrett	79	66	80	49	136	165	75	73	89	94
Washington	446	448	593	412	518	686	480	490	519	503
FIFTH CIRCUIT	1999	2183	2476	2333	3469	3333	3910	3801	3311	3078
Anne Arundel	1394	1427	1777	1788	2456	2378	2841	2893	2274	2215
Carroll	199	341	277	183	454	357	328	360	435	404
Howard	406	415	422	362	559	598	741	548	602	459
SIXTH CIRCUIT	1308	1162	1633	1608	2185	1981	1800	2015	1935	1740
Frederick	281	262	269	284	353	329	286	332	369	324
Montgomery	1027	900	1364	1324	1832	1652	1514	1683	1566	1416
SEVENTH CIRCUIT	2524	2306	2880	3164	3113	2908	3400	3095	3604	2921
Calvert	143	91	110	195	116	120	260	205	234	183
Charles	336	317	382	323	391	371	385	367	480	501
Prince George's	1826	1675	2225	2455	2453	2255	2641	2411	2734	2106
St. Mary's	219	223	163	191	153	162	114	112	156	131
EIGHTH CIRCUIT	13,830	16,164	16,286	14,826	18,112	17,505	26,441	24,139	19,512	17,348
Baltimore City	13,830	16,164	16,286	14,826	18,112	17,505	26,441	24,139	19,512	17,348
STATE	24,603	26,567	29,606	27,552	33,744	32,910	43,171	40,807	35,729	32,512

TABLE D-5

COMPARATIVE TABLE OF JUVENILE CAUSES

FILED AND TERMINATED IN THE

COURTS OF MARYLAND

	1973-74		1974-75		1975-76		1976-77		1977-78	
	F	T	F	T	F	T	F	T	F	T
FIRST CIRCUIT	521	513	580	578	568	505	670	695	536	574
Dorchester	172	161	158	172	158	157	250	248	188	201
Somerset	54	48	60	58	91	75	56	67	53	54
Wicomico	202	219	199	197	213	156	228	241	161	184
Worcester	93	85	163	151	106	117	136	339	134	135
SECOND CIRCUIT	497	516	425	436	496	442	600	666	553	579
Caroline	41	55	48	42	55	41	66	85	79	78
Cecil	179	183	192	200	197	179	234	234	239	256
Kent	71	70	43	51	110	105	111	125	60	63
Queen Anne's	110	110	74	77	62	53	79	108	71	66
Talbot	96	98	68	66	72	64	110	114	104	116
THIRD CIRCUIT	2363	2412	2277	2224	2342	2308	2129	2080	2180	1940
Baltimore	1918	1968	1742	1736	1798	1711	1509	1468	1593	1540
Harford	445	444	535	488	544	597	620	612	587	400
FOURTH CIRCUIT	1023	1056	1104	1045	1103	979	999	943	980	999
Allegany	343	355	423	426	460	385	425	389	409	411
Garrett	102	89	101	77	119	124	194	190	143	151
Washington	578	612	580	542	524	470	380	364	428	437
FIFTH CIRCUIT	1916	1861	2021	1938	2412	2138	2494	2345	2565	2740
Anne Arundel	1375	1278	1437	1276	1833	1638	1782	1603	1778	2011
Carroll	233	200	228	243	260	240	351	385	364	318
Howard	308	383	356	419	319	260	361	357	423	411
SIXTH CIRCUIT	2297	2078	2041	2184	3272	2691	3068	3473	2285	2509
Frederick	209	234	182	173	195	172	154	134	176	214
Montgomery*	2088	1844	1859	2011	3077	2519	2914	3339	2109	2295
SEVENTH CIRCUIT	5038	5016	5560	5523	5505	5635	6090	6057	5890	6070
Calvert	123	94	254	262	141	178	212	153	206	240
Charles	282	260	334	375	450	436	356	371	532	511
Prince George's	4361	4399	4735	4616	4704	4798	5242	5265	4884	5097
St. Mary's	272	263	237	270	210	223	280	268	268	222
EIGHTH CIRCUIT	10,872	9332	11,322	10,832	12,675	15,670	10,689	11,657	9592	9207
Baltimore City	10,872	9332	11,322	10,832	12,675	15,670	10,689	11,657	9592	9207
STATE	24,527	22,784	25,330	24,760	28,373	30,368	26,739	27,916	24,581	24,618

\*Includes juvenile causes heard at District Court level.

# TABLE E-1

## CASES TRIED

JULY 1, 1977 - JUNE 30, 1978

	TOTALS	LAW		EQUITY	CRIMINAL	
		JURY	NON-JURY		JURY	NON-JURY
FIRST CIRCUIT	1988	25	70	1070	81	742
Dorchester	592	7	15	369	19	182
Somerset	134	0	4	91	18	21
Wicomico	798	15	27	419	36	301
Worcester	464	3	24	191	8	238
SECOND CIRCUIT	773	45	62	166	149	351
Caroline	137	1	3	43	12	78
Cecil	388	17	33	64	105	169
Kent	39	9	8	2	15	5
Queen Anne's	106	14	10	30	6	46
Talbot	103	4	8	27	11	53
THIRD CIRCUIT	5174	212	178	3083	137	1564
Baltimore	4755	137	143	3018	91	1366
Harford	419	75	35	65	46	198
FOURTH CIRCUIT	583	33	45	129	90	286
Allegany	229	11	5	51	24	138
Garrett	128	2	13	55	6	52
Washington	226	20	27	23	60	96
FIFTH CIRCUIT	2696	106	231	1298	116	945
Anne Arundel	1472	101	152	613	85	521
Carroll	692	3	33	327	16	313
Howard	532	2	46	358	15	111
SIXTH CIRCUIT	2646	203	129	1908	222	184
Frederick	135	28	16	39	29	23
Montgomery	2511	175	113	1869	193	161
SEVENTH CIRCUIT	5054	231	163	4156	333	171
Calvert	87	7	4	34	20	22
Charles	218	26	17	117	41	17
Prince George's	4573	188	115	3906	244	120
St. Mary's	176	10	27	99	28	12
EIGHTH CIRCUIT	6998	216	444	2920	398	3020
Baltimore City	6998	216	444	2920	398	3020
STATE	25,912	1071	1322	14,730	1526	7263

# TABLE E-2

## LAW CASES

### PROPORTION OF TRIALS TO DISPOSITIONS

	TOTAL LAW CASES DISPOSED OF	DISPOSED OF BY TRIAL	PERCENT DISPOSED OF BY TRIAL
<b>FIRST CIRCUIT</b>			
Dorchester	162	22	13.6
Somerset	62	4	6.5
Wicomico	235	42	17.9
Worcester	466	27	5.8
<b>SECOND CIRCUIT</b>			
Caroline	54	4	7.4
Cecil	383	50	13.0
Kent	60	17	28.3
Queen Anne's	86	24	27.9
Talbot	69	12	17.4
<b>THIRD CIRCUIT</b>			
Baltimore	2066	280	13.6
Harford	413	110	26.6
<b>FOURTH CIRCUIT</b>			
Allegany	253	16	6.3
Garrett	129	15	11.6
Washington	460	47	10.2
<b>FIFTH CIRCUIT</b>			
Anne Arundel	2259	253	11.2
Carroll	321	36	11.2
Howard	504	48	9.5
<b>SIXTH CIRCUIT</b>			
Frederick	305	44	14.4
Montgomery	2310	288	12.5
<b>SEVENTH CIRCUIT</b>			
Calvert	129	11	8.5
Charles	212	43	20.3
Prince George's	2425	303	12.5
St. Mary's	174	37	21.3
<b>EIGHTH CIRCUIT</b>			
Baltimore City	5813	660	11.4
STATE	19,350	2393	12.4

# TABLE E-3

## CRIMINAL CASES TRIED

	1973-74	1974-75	1975-76	1976-77	1977-78
<b>FIRST CIRCUIT</b>					
Dorchester	128	100	111	219	201
Somerset	39	130	125	53	39
Wicomico	285	300	295	214	337
Worcester	125	160	200	188	246
<b>SECOND CIRCUIT</b>					
Caroline	26	34	27	62	90
Cecil	152	143	160	176	274
Kent	77	50	53	50	20
Queen Anne's	66	73	69	60	52
Talbot	89	91	102	73	64
<b>THIRD CIRCUIT</b>					
Baltimore	1943	1690	1624	1857	1457
Harford	276	371	415	327	244
<b>FOURTH CIRCUIT</b>					
Allegany	154	174	180	206	162
Garrett	58	38	83	44	58
Washington	343	272	292	124	156
<b>FIFTH CIRCUIT</b>					
Anne Arundel	1155	1169	1295	744	606
Carroll	358	155	259	243	329
Howard	258	245	370	51	126
<b>SIXTH CIRCUIT</b>					
Frederick	203	170	188	37	52
Montgomery	567	570	741	330	354
<b>SEVENTH CIRCUIT</b>					
Calvert	32	62	84	68	42
Charles	162	119	133	38	58
Prince George's	1518	1140	1236	357	364
St. Mary's	215	135	145	43	40
<b>EIGHTH CIRCUIT</b>					
Baltimore City	9684	7818	8992	4417	3418
<b>STATE</b>	<b>17,913</b>	<b>15,209</b>	<b>17,179</b>	<b>9981</b>	<b>8789</b>

# TABLE E-4

## LAW CASES TRIED

	1973-74	1974-75	1975-76	1976-77	1977-78
<b>FIRST CIRCUIT</b>					
Dorchester	37	21	41	25	22
Somerset	7	4	14	3	4
Wicomico	40	25	48	24	42
Worcester	11	18	29	21	27
<b>SECOND CIRCUIT</b>					
Caroline	11	5	7	1	4
Cecil	33	35	33	42	50
Kent	16	20	23	13	17
Queen Anne's	6	2	10	25	24
Talbot	42	9	14	15	12
<b>THIRD CIRCUIT</b>					
Baltimore	587	545	633	450	280
Harford	73	74	74	101	110
<b>FOURTH CIRCUIT</b>					
Allegany	28	20	21	5	16
Garrett	20	17	17	16	15
Washington	42	29	54	33	47
<b>FIFTH CIRCUIT</b>					
Anne Arundel	242	219	227	207	253
Carroll	30	52	47	77	36
Howard	106	135	149	78	48
<b>SIXTH CIRCUIT</b>					
Frederick	30	41	35	30	44
Montgomery	281	270	308	312	288
<b>SEVENTH CIRCUIT</b>					
Calvert	38	26	43	40	11
Charles	53	44	36	54	43
Prince George's	760	544	528	453	303
St. Mary's	31	37	42	68	37
<b>EIGHTH CIRCUIT</b>					
Baltimore City	1154	1736	1200	446	660
<b>STATE</b>	<b>3678</b>	<b>3928</b>	<b>3633</b>	<b>2539</b>	<b>2393</b>

# TABLE E-5

## EQUITY HEARINGS

	1973-74	1974-75	1975-76	1976-77	1977-78
<b>FIRST CIRCUIT</b>					
Dorchester	243	222	289	497	369
Somerset	22	188	195	50	91
Wicomico	60	64	54	53	419
Worcester	14	35	90	127	191
<b>SECOND CIRCUIT</b>					
Caroline	21	35	44	47	43
Cecil	329	331	397	154	64
Kent	34	28	30	6	2
Queen Anne's	8	10	12	38	30
Talbot	108	82	92	21	27
<b>THIRD CIRCUIT</b>					
Baltimore	1344	1693	2757	3223	3018
Harford	152	283	510	100	65
<b>FOURTH CIRCUIT</b>					
Allegany	126	109	137	92	51
Garrett	49	43	47	38	55
Washington	390	231	273	11	23
<b>FIFTH CIRCUIT</b>					
Anne Arundel	557	707	732	143	613
Carroll	160	232	261	383	327
Howard	158	262	405	364	358
<b>SIXTH CIRCUIT</b>					
Frederick	82	368	681	42	39
Montgomery	381	1065	1739	1914	1869
<b>SEVENTH CIRCUIT</b>					
Calvert	7	24	46	24	34
Charles	100	109	250	36	117
Prince George's	1185	2328	2712	3459	3906
St. Mary's	89	97	99	152	99
<b>EIGHTH CIRCUIT</b>					
Baltimore City	854	1371	2301	3434	2920
<b>STATE</b>					
	6473	9917	14,153	14,408	14,730

TABLE E-6

CASES TRIED

(1977-78)

	<u>State</u>	<u>Baltimore City</u>	<u>All Counties</u>	<u>Four Largest Counties</u>	<u>Other 19 Counties</u>
LAW					
Jury	1071	216	855	601	254
Non-Jury	1322	444	878	523	355
EQUITY	14,730	2920	11,810	9406	2404
CRIMINAL					
Jury	1526	398	1128	613	515
Non-Jury	7263	3020	4243	2168	2075

AVERAGE DAYS FROM FILING TO TRIAL

IN THE LARGEST JURISDICTIONS

	<u>LAW</u>	<u>EQUITY</u>	<u>JUVENILE</u>	<u>CRIMINAL</u>
Baltimore City	656	172	45	99
Anne Arundel	345	164	35	105
Baltimore	491	202	50	120
Montgomery	447	217	70	91
Prince George's	374	151	8	148



TABLE E-7

AVERAGE DAYS FROM FILING TO TRIAL OR HEARING

	LAW		EQUITY		JUVENILE		CRIMINAL	
	1976-77	1977-78	1976-77	1977-78	1976-77	1977-78	1976-77	1977-78
FIRST CIRCUIT								
Dorchester	206	145	101	98	8	20	404	65
Somerset	53	228	50	102	8	11	55	71
Wicomico	457	399	119	35	23	24	169	100
Worcester	766	359	74	76	35	35	77	75
SECOND CIRCUIT								
Caroline	229	81	244	197	27	32	69	67
Cecil	391	274	131	108	27	31	104	121
Kent	126	194	14	40	24	21	73	30
Queen Anne's	38	260	272	112	21	31	76	108
Talbot	258	279	58	45	34	34	61	95
THIRD CIRCUIT								
Baltimore	531	491	208	202	51	50	120	120
Harford	635	413	408	281	95	102	179	203
FOURTH CIRCUIT								
Allegany	45	290	490	257	20	15	45	99
Garrett	66	257	94	97	4	46	56	134
Washington	139	191	155	168	18	36	113	127
FIFTH CIRCUIT								
Anne Arundel	429	345	229	164	32	35	116	105
Carroll	352	255	195	153	36	33	177	84
Howard	333	166	180	160	48	22	44	180
SIXTH CIRCUIT								
Frederick	445	192	139	113	17	21	60	66
Montgomery	605	447	217	217	64	70	118	91
SEVENTH CIRCUIT								
Calvert	216	191	211	143	17	17	83	71
Charles	292	333	56	190	27	42	102	99
Prince George's	432	374	182	151	13	8	125	148
St. Mary's	465	373	213	252	36	36	44	51
EIGHTH CIRCUIT								
Baltimore City	703	656	196	172	38	45	94	99

TABLE E-8

AVERAGE DAYS FROM FILING TO DISPOSITION

	LAW		EQUITY		JUVENILE		CRIMINAL	
	1976-77	1977-78	1976-77	1977-78	1976-77	1977-78	1976-77	1977-78
FIRST CIRCUIT								
Dorchester	248	215	75	121	20	36	102	72
Somerset	208	107	73	119	14	29	74	145
Wicomico	346	357	213	118	52	70	166	154
Worcester	214	238	293	197	41	65	111	143
SECOND CIRCUIT								
Caroline	194	89	130	103	49	58	60	88
Cecil	86	96	127	217	43	129	108	135
Kent	119	206	135	130	59	80	91	79
Queen Anne's	176	156	105	136	39	51	102	161
Talbot	188	243	118	97	64	65	68	113
THIRD CIRCUIT								
Baltimore	438	298	311	255	70	62	142	152
Harford	362	276	196	194	117	100	201	198
FOURTH CIRCUIT								
Allegany	190	272	117	128	19	50	77	112
Garrett	167	168	184	167	41	51	126	147
Washington	225	216	86	148	27	38	124	140
FIFTH CIRCUIT								
Anne Arundel	298	322	152	132	100	110	119	147
Carroll	147	121	158	197	54	36	192	104
Howard	177	160	221	232	184	138	193	210
SIXTH CIRCUIT								
Frederick	425	279	109	202	58	93	84	93
Montgomery	456	442	452	302	82	100	165	161
SEVENTH CIRCUIT								
Calvert	207	304	205	177	58	60	92	142
Charles	229	283	109	170	61	69	137	119
Prince George's	383	362	237	242	55	54	152	175
St. Mary's	389	326	257	265	51	39	58	83
EIGHTH CIRCUIT								
Baltimore City	824	551	175	138	55	55	118	159

# TABLE F

## JUVENILE DISPOSITIONS

JULY 1, 1977 - JUNE 30, 1978

	a.	b.	c.	d.	e.	f.	TOTALS
	Jurisdiction Waived	Dismissed	Probation	Institutional Commitment	Charge not sustained	Other conclusion or disposition*	
<b>FIRST CIRCUIT</b>							
Dorchester	32	8	24	30	9	98	201
Somerset	18	0	20	6	0	10	54
Wicomico	21	1	62	27	2	71	184
Worcester	25	0	36	13	1	60	135
<b>SECOND CIRCUIT</b>							
Caroline	0	0	21	9	5	43	78
Cecil	14	10	51	12	7	162	256
Kent	2	4	6	6	2	43	63
Queen Anne's	3	1	26	11	3	22	66
Talbot	3	2	54	20	11	26	116
<b>THIRD CIRCUIT</b>							
Baltimore	54	61	500	100	124	701	1540
Harford	3	2	152	40	56	147	400
<b>FOURTH CIRCUIT</b>							
Allegany	0	16	144	35	8	208	411
Garrett	3	0	43	40	9	56	151
Washington	14	17	164	70	15	157	437
<b>FIFTH CIRCUIT</b>							
Anne Arundel	31	0	643	219	280	838	2011
Carrroll	6	0	99	11	0	202	318
Howard	1	85	118	17	64	126	411
<b>SIXTH CIRCUIT</b>							
Frederick	2	14	103	22	5	68	214
Montgomery	2	304	315	142	41	1491	2295
<b>SEVENTH CIRCUIT</b>							
Calvert	13	13	126	17	7	64	240
Charles	5	0	233	30	4	239	511
Prince George's	33	1397	1615	258	555	1239	5097
St. Mary's	1	8	31	7	0	175	222
<b>EIGHTH CIRCUIT</b>							
Baltimore City	563	65	2580	854	143	5002	9207
<b>STATE TOTALS</b>	<b>849</b>	<b>2008</b>	<b>7166</b>	<b>1996</b>	<b>1351</b>	<b>11,248</b>	<b>24,618</b>

\*Includes juvenile causes disposed of by informal action.

# TABLE G

## POPULATION AND CASELOAD PER JUDGE

	NUMBER OF JUDGES*	POPULATION PER JUDGE**	CASES FILED PER JUDGE		CASES TERMINATED PER JUDGE	
			CIVIL	CRIMINAL	CIVIL	CRIMINAL
<b>FIRST CIRCUIT</b>						
Dorchester	1	30,000	1156	206	1159	225
Somerset	1	20,100	468	86	451	117
Wicomico	2	30,950	843	176	845	309
Worcester	1	28,600	1303	334	1269	349
<b>SECOND CIRCUIT</b>						
Caroline	1	22,700	471	101	438	117
Cecil	2	28,650	798	218	796	204
Kent	1	16,800	344	120	310	119
Queen Anne's	1	21,600	407	124	387	123
Talbot	1	26,700	506	117	450	100
<b>THIRD CIRCUIT</b>						
Baltimore	10	64,780	1062	410	932	388
Harford	3	48,933	906	193	794	197
<b>FOURTH CIRCUIT</b>						
Allegany	2	40,750	835	102	623	89
Garrett	1	25,600	556	89	520	94
Washington	2	55,550	1042	260	994	252
<b>FIFTH CIRCUIT</b>						
Anne Arundel	7	52,571	1490	325	1318	316
Carroll	2	44,200	805	218	612	202
Howard	3	39,700	734	201	534	153
<b>SIXTH CIRCUIT</b>						
Frederick	2	51,650	992	185	981	162
Montgomery	10	59,860	764***	157	623***	142
<b>SEVENTH CIRCUIT</b>						
Calvert	1	30,400	760	234	764	183
Charles	1	67,200	1396	480	1309	501
Prince George's	12	57,058	1295	228	1189	176
St. Mary's	1	54,200	1192	156	1114	131
<b>EIGHTH CIRCUIT</b>						
Baltimore City	22	36,695	1311	887	1095	789
STATE	90	46,885	1080	397	945	361

\*Number of Judges as of June 30, 1978.

\*\*Population Estimate for July 1, 1978 issued by the Maryland Center for Health Statistics.

\*\*\*Juvenile causes not included since they are heard at the District Court level.

TABLE H

CIVIL CASES INSTITUTED

LAW   
EQUITY 

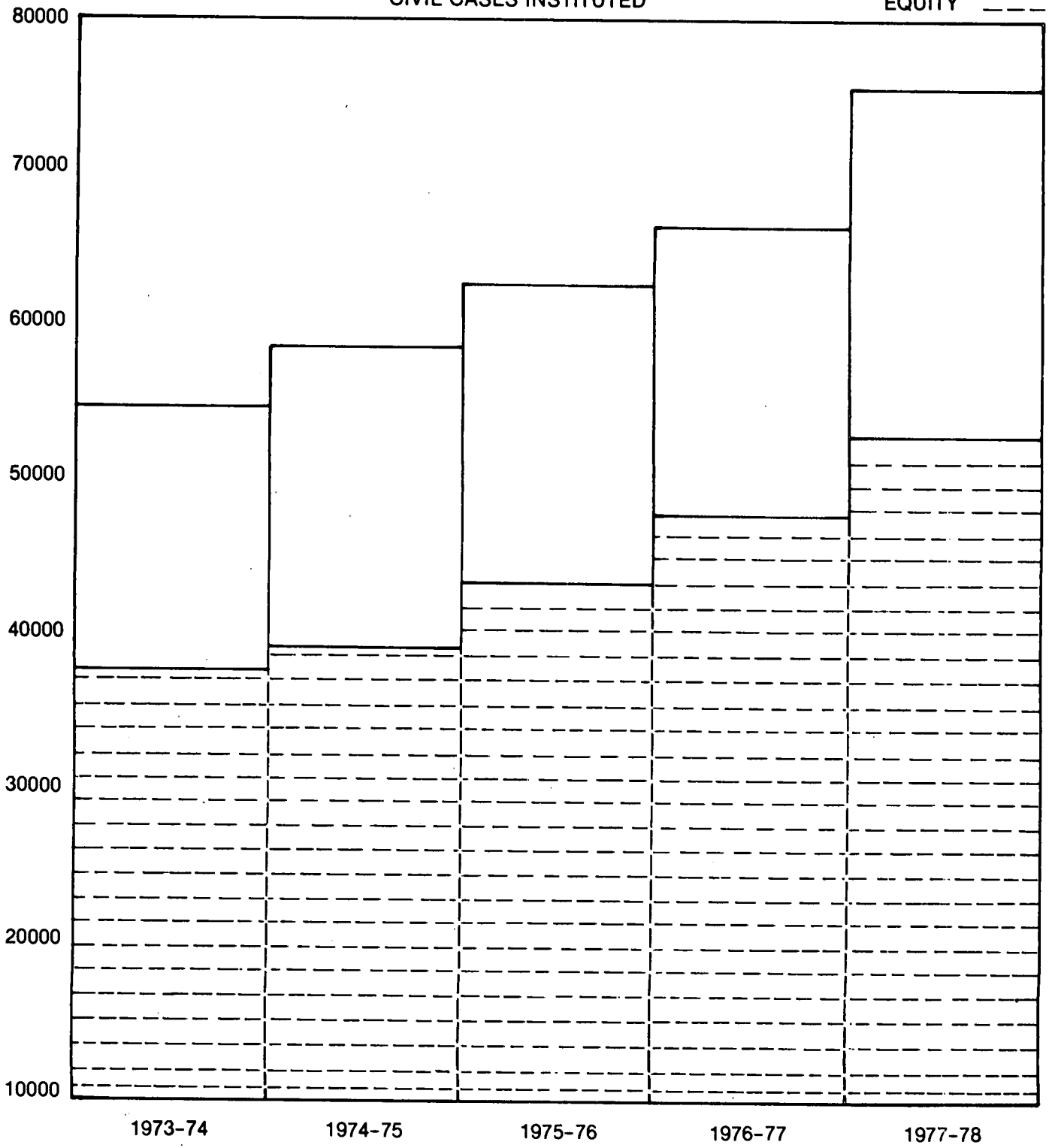
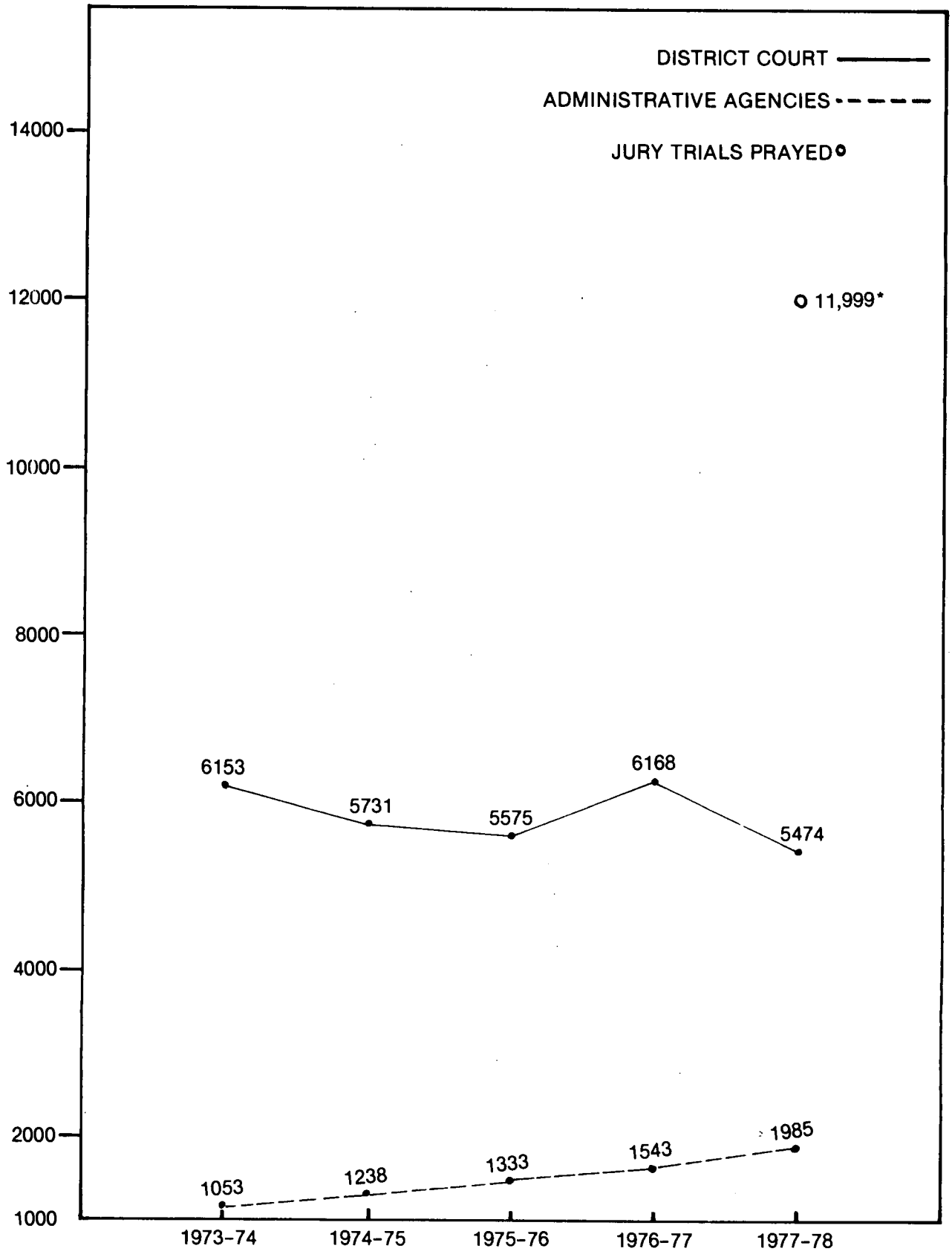


TABLE I  
 COMPARATIVE APPEALS FROM  
 DISTRICT COURT AND ADMINISTRATIVE AGENCIES



\*PRIOR YEARS NOT AVAILABLE

# TABLE J

## APPEALS FROM DISTRICT COURT AND ADMINISTRATIVE AGENCIES

JULY 1, 1977 - JUNE 30, 1978

	<u>LAW</u>			<u>CRIMINAL</u>			<u>TOTALS</u>	
	DISTRICT COURT		ADMINISTRATIVE AGENCIES	TOTAL	MOTOR VEHICLE	OTHER		TOTAL
	DeNovo	Record						
<b>FIRST CIRCUIT</b>								
Dorchester	3	3	83	89	11	23	34	123
Somerset	2	0	5	7	1	4	5	12
Wicomico	5	12	17	34	21	46	67	101
Worcester	0	15	9	24	16	19	35	59
<b>SECOND CIRCUIT</b>								
Caroline	0	1	3	4	6	9	15	19
Cecil	3	8	20	31	34	36	70	101
Kent	0	3	6	9	5	4	9	18
Queen Anne's	1	1	8	10	7	7	14	24
Talbot	0	4	12	16	5	4	9	25
<b>THIRD CIRCUIT</b>								
Baltimore	43	91	291	425	328	204	532	957
Harford	9	12	45	66	69	31	100	166
<b>FOURTH CIRCUIT</b>								
Allegany	2	10	45	57	30	48	78	135
Garrett	1	0	5	6	2	2	4	10
Washington	4	12	57	73	22	46	68	141
<b>FIFTH CIRCUIT</b>								
Anne Arundel	55	44	178	277	142	139	281	558
Carroll	5	10	51	66	82	60	142	208
Howard	5	17	58	80	109	61	170	250
<b>SIXTH CIRCUIT</b>								
Frederick	5	7	18	30	28	20	48	78
Montgomery	47	50	137	234	115	132	247	481
<b>SEVENTH CIRCUIT</b>								
Calvert	0	0	22	22	8	9	17	39
Charles	3	2	9	14	31	34	65	79
Prince George's	18	47	135	200	137	172	309	509
St. Mary's	3	3	5	11	9	17	26	37
<b>EIGHTH CIRCUIT</b>								
Baltimore City	142	171	766	1079	1575	675	2250	3329
<b>STATE TOTALS</b>								
	356	523	1985	2864	2793	1802	4595	7459

# TABLE K

## COMPARATIVE APPEALS FROM ADMINISTRATIVE AGENCIES

	1973-74	1974-75	1975-76	1976-77	1977-78
<b>FIRST CIRCUIT</b>					
Dorchester	13	20	37	48	83
Somerset	4	3	1	4	5
Wicomico	12	14	16	11	17
Worcester	4	5	5	13	9
<b>SECOND CIRCUIT</b>					
Caroline	2	1	4	3	3
Cecil	10	23	21	9	20
Kent	9	8	5	6	6
Queen Anne's	3	3	6	9	8
Talbot	8	0	1	8	12
<b>THIRD CIRCUIT</b>					
Baltimore	121	113	182	205	291
Harford	18	23	33	47	45
<b>FOURTH CIRCUIT</b>					
Allegany	14	37	32	38	45
Garrett	1	4	2	8	5
Washington	19	29	37	37	57
<b>FIFTH CIRCUIT</b>					
Anne Arundel	58	59	75	103	178
Carroll	11	36	23	21	51
Howard	16	26	32	40	58
<b>SIXTH CIRCUIT</b>					
Frederick	14	18	32	14	18
Montgomery	67	96	150	125	137
<b>SEVENTH CIRCUIT</b>					
Calvert	14	12	17	13	22
Charles	7	13	10	10	9
Prince George's	74	88	124	167	135
St. Mary's	9	14	21	11	5
<b>EIGHTH CIRCUIT</b>					
Baltimore City	545	593	467	593	766
<b>STATE</b>	<b>1053</b>	<b>1238</b>	<b>1333</b>	<b>1543</b>	<b>1985</b>



# TABLE L

## HABEAS CORPUS AND POST CONVICTION CASES FILED

	HABEAS CORPUS					POST CONVICTION				
	1973-74	1974-75	1975-76	1976-77	1977-78	1973-74	1974-75	1975-76	1976-77	1977-78
<b>FIRST CIRCUIT</b>										
Dorchester	4	1	8	2	8	3	3	4	11	8
Somerset	1	2	3	0	0	4	3	3	1	1
Wicomico	1	0	1	2	1	13	7	4	13	10
Worcester	0	0	4	1	1	2	1	3	8	9
<b>SECOND CIRCUIT</b>										
Caroline	1	3	0	2	3	4	1	9	6	4
Cecil	3	6	10	7	11	4	9	10	14	13
Kent	0	1	2	0	0	0	0	1	0	0
Queen Anne's	2	0	4	0	9	3	9	1	6	14
Talbot	1	0	1	4	5	0	2	2	0	17
<b>THIRD CIRCUIT</b>										
Baltimore	74	132	108	46	45	34	38	50	118	84
Harford	4	1	7	4	3	7	5	4	18	8
<b>FOURTH CIRCUIT</b>										
Allegany	1	0	0	0	0	0	2	0	0	0
Garrett	0	0	3	1	0	1	2	2	5	3
Washington	15	6	8	6	8	6	5	6	2	3
<b>FIFTH CIRCUIT</b>										
Anne Arundel	9	21	19	23	31	13	8	10	14	25
Carroll	7	20	16	16	26	1	2	3	2	1
Howard	16	33	34	25	10	9	2	0	0	0
<b>SIXTH CIRCUIT</b>										
Frederick	2	1	3	0	3	2	0	2	4	2
Montgomery	23	39	40	40	42	10	11	10	10	15
<b>SEVENTH CIRCUIT</b>										
Calvert	0	1	2	2	1	5	3	7	0	0
Charles	2	5	5	2	4	1	5	6	11	10
Prince George's	41	53	44	28	31	43	44	58	80	74
St. Mary's	0	0	4	1	1	2	3	0	0	0
<b>EIGHTH CIRCUIT</b>										
Baltimore City	320	251	202	243	238	281	240	334	118	292
<b>STATE</b>										
	527	576	528	455	481	448	405	529	441	593

# TABLE M

## APPLICATIONS FOR REVIEW OF CRIMINAL SENTENCES

JULY 1, 1977 - JUNE 30, 1978

	Filed During Year	Withdrawn by Applicant	Terminated		
			Considered and Disposed Of		
			Original Sentence Unchanged	Original Sentence Increased	Original Sentence Decreased
<b>FIRST CIRCUIT</b>					
Dorchester	3	0	3	0	0
Somerset	0	0	0	0	0
Wicomico	5	1	6	0	0
Worcester	5	1	5	0	0
<b>SECOND CIRCUIT</b>					
Caroline	0	0	0	0	0
Cecil	10	0	8	0	0
Kent	0	0	0	0	0
Queen Anne's	1	0	1	0	0
Talbot	1	0	0	0	0
<b>THIRD CIRCUIT</b>					
Baltimore	31	1	30	0	0
Harford	4	0	8	0	0
<b>FOURTH CIRCUIT</b>					
Allegany	8	1	7	0	0
Garrett	3	0	0	0	1
Washington	7	0	6	0	0
<b>FIFTH CIRCUIT</b>					
Anne Arundel	17	2	12	0	2
Carroll	0	0	0	0	0
Howard	3	1	4	0	0
<b>SIXTH CIRCUIT</b>					
Frederick	9	0	9	0	0
Montgomery	44	4	19	0	6
<b>SEVENTH CIRCUIT</b>					
Calvert	8	0	8	0	1
Charles	2	0	2	0	1
Prince George's	38	0	33	0	1
St. Mary's	6	0	4	0	1
<b>EIGHTH CIRCUIT</b>					
Baltimore City	68	1	67	0	0
<b>STATE</b>	<b>273</b>	<b>12</b>	<b>232</b>	<b>0</b>	<b>13</b>

THE DISTRICT COURT

1  
2  
3  
4  
5  
6  
7  
8  
9  
10  
11  
12  
13  
14  
15  
16  
17  
18  
19  
20  
21  
22  
23  
24  
25  
26  
27  
28  
29  
30  
31  
32  
33  
34  
35  
36  
37  
38  
39  
40  
41  
42  
43  
44  
45  
46  
47  
48  
49  
50  
51  
52  
53  
54  
55  
56  
57  
58  
59  
60  
61  
62  
63  
64  
65  
66  
67  
68  
69  
70  
71  
72  
73  
74  
75  
76  
77  
78  
79  
80  
81  
82  
83  
84  
85  
86  
87  
88  
89  
90  
91  
92  
93  
94  
95  
96  
97  
98  
99  
100

The District Court processed a total of 1,182,707 cases during fiscal year 1977-78 including 683,245 motor vehicle cases, 101,202 criminal cases and 398,260 civil cases. Not included in these figures are 2,109 juvenile causes handled by the District Court in Montgomery County. Motor vehicle cases increased by 1.6 percent from 1976-77 while civil cases rose by 7.3 percent. Of the 247,113 motor vehicle cases disposed of by trial, Baltimore County accounted for the largest number, 62,476.

Previously, criminal cases were counted by number of offenses whereas this year only the number of defendants were counted so that a comparison to previous years is impossible.

Statewide, 101,202 persons were charged with criminal offenses in the District Court during 1977-78. Defendants held for action by the grand jury numbered 6471 with an additional 5588 defendants electing trial by jury at the circuit court level. Baltimore City registered criminal figures of 41,502 defendants while Baltimore County accounted for 11,271 defendants.

Disputes involving landlords and tenants were responsible for 71.0 percent of the civil caseload in 1977-78. Baltimore City, as expected, docketed the most civil actions 163,435, followed by Prince George's County with 98,335 and Baltimore County with 52,931.

Statistical charts reflecting the caseload of the District Court will be found on the following pages.

# TABLE DC-1

MOTOR VEHICLE, CRIMINAL, AND CIVIL CASES FILED IN THE

DISTRICT COURT OF MARYLAND

JULY 1, 1977 - JUNE 30, 1978

	<u>MOTOR VEHICLE</u>	<u>CRIMINAL</u>	<u>CIVIL</u>	<u>TOTAL</u>
DISTRICT 1				
Baltimore City	90,861	41,502	163,435	295,798
DISTRICT 2				
Dorchester	6560	965	1261	8786
Somerset	4944	578	669	6191
Wicomico	11,068	1359	3065	15,492
Worcester	6457	1349	1484	9290
DISTRICT 3				
Caroline	4806	374	597	5777
Cecil	35,898	1500	1256	38,654
Kent	2945	304	521	3770
Queen Anne's	6142	286	560	6988
Talbot	5805	582	604	6991
DISTRICT 4				
Calvert	6555	493	907	7955
Charles	9960	1164	1410	12,534
St. Mary's	6719	963	1166	8848
DISTRICT 5				
Prince George's	132,588	10,868	98,335	241,791
DISTRICT 6				
Montgomery	65,661	8380	31,327	105,368
DISTRICT 7				
Anne Arundel	45,100	7907	18,399	71,406
DISTRICT 8				
Baltimore	119,552	11,271	52,931	183,754
DISTRICT 9				
Harford	29,968	2283	5981	38,232
DISTRICT 10				
Carroll	11,862	1167	1902	14,931
Howard	25,448	2234	4793	32,475
DISTRICT 11				
Frederick	24,751	1950	2441	29,142
Washington	18,073	1852	3507	23,432
DISTRICT 12				
Allegany	7900	1426	1127	10,453
Garrett	3622	445	582	4649
STATE	683,245	101,202	398,260	1,182,707

## TABLE DC-2

MOTOR VEHICLE CASES PROCESSED BY THE

DISTRICT COURT OF MARYLAND

JULY 1, 1977 - JUNE 30, 1978

	<u>CASES TRIED</u>	<u>CASES PAID</u>	<u>TOTAL CASES</u>
DISTRICT 1			
Baltimore City	57,904	32,957	90,861
DISTRICT 2			
Dorchester	1231	5329	6560
Somerset	470	4474	4944
Wicomico	2089	8979	11,068
Worcester	1320	5137	6457
DISTRICT 3			
Caroline	699	4107	4806
Cecil	4080	31,818	35,898
Kent	361	2584	2945
Queen Anne's	779	5363	6142
Talbot	1207	4598	5805
DISTRICT 4			
Calvert	1344	5211	6555
Charles	2134	7826	9960
St. Mary's	1240	5479	6719
DISTRICT 5			
Prince George's	37,593	94,995	132,588
DISTRICT 6			
Montgomery	16,289	49,372	65,661
DISTRICT 7			
Anne Arundel	22,537	22,563	45,100
DISTRICT 8			
Baltimore	62,476	57,076	119,552
DISTRICT 9			
Harford	10,174	19,794	29,968
DISTRICT 10			
Carroll	3831	8031	11,862
Howard	8597	16,851	25,448
DISTRICT 11			
Frederick	4430	20,321	24,751
Washington	3113	14,960	18,073
DISTRICT 12			
Allegany	2570	5330	7900
Garrett	645	2977	3622
STATE			
	247,113	436,132	683,245

## TABLE DC-3

CRIMINAL CASES PROCESSED BY THE DISTRICT COURT OF MARYLAND

JULY 1, 1977 - JUNE 30, 1978

	<u>TOTAL NUMBER OF DEFENDANTS CHARGED</u>	<u>DEFENDANTS HELD FOR GRAND JURY</u>	<u>DEFENDANTS PRAYING JURY TRIAL</u>
DISTRICT 1			
Baltimore City	41,502	2169	3775
DISTRICT 2			
Dorchester	965	45	65
Somerset	578	62	21
Wicomico	1359	185	20
Worcester	1349	125	51
DISTRICT 3			
Caroline	374	49	9
Cecil	1500	119	44
Kent	304	19	20
Queen Anne's	286	39	6
Talbot	582	26	11
DISTRICT 4			
Calvert	493	77	1
Charles	1164	60	72
St. Mary's	963	22	2
DISTRICT 5			
Prince George's	10,868	1265	345
DISTRICT 6			
Montgomery	8380	333	191
DISTRICT 7			
Anne Arundel	7907	611	161
DISTRICT 8			
Baltimore	11,271	552*	396*
DISTRICT 9			
Harford	2283	151	133
DISTRICT 10			
Carroll	1167	181**	73**
Howard	2234	- **	- **
DISTRICT 11			
Frederick	1950	172	41
Washington	1852	127	129
DISTRICT 12			
Allegany	1426	64	18
Garrett	445	18	4
STATE	101,202	6471	5588

\*Does not include January and February 1978 figures.

\*\*Combined figures for both Carroll and Howard Counties.



# TABLE DC-4

CIVIL CASES PROCESSED BY THE DISTRICT COURT OF MARYLAND

JULY 1, 1977 - JUNE 30, 1978

	<u>LANDLORD AND TENANT</u> <u>CASES</u>		<u>CONTRACT AND TORT</u> <u>CASES</u>		<u>OTHER CASES</u>		<u>TOTALS</u>	
	<u>Filed</u>	<u>Contested</u>	<u>Filed</u>	<u>Contested</u>	<u>Filed</u>	<u>Contested</u>	<u>Filed</u>	<u>Contested</u>
DISTRICT 1								
Baltimore City	129,177	19,041	31,760	3091	2498	533	163,435	13,665
DISTRICT 2								
Dorchester	462	3	647	34	152	44	1261	81
Somerset	59	20	544	82	66	33	669	135
Wicomico	786	32	2021	180	258	209	3065	421
Worcester	109	40	1194	190	181	68	1484	298
DISTRICT 3								
Caroline	69	14	486	26	42	6	597	46
Cecil	368	92	775	97	113	24	1256	213
Kent	32	16	458	17	31	5	521	38
Queen Anne's	39	6	503	21	18	0	560	27
Talbot	48	11	510	71	46	17	604	99
DISTRICT 4								
Calvert	62	14	750	76	95	15	907	105
Charles	142	48	1124	78	144	53	1410	179
St. Mary's	195	47	853	115	118	66	1166	228
DISTRICT 5								
Prince George's	77,726	5597	18,592	3164	2017	1382	98,335	10,143
DISTRICT 6								
Montgomery	19,064	629	11,285	1685	978	172	31,327	2486
DISTRICT 7								
Anne Arundel	10,297	490	7118	1245	984	579	18,399	2314
DISTRICT 8								
Baltimore	36,830	3848	14,276	1477	1825	869	52,931	6194
DISTRICT 9								
Harford	2956	229	2796	558	229	63	5981	850
DISTRICT 10								
Carroll	421	47	1294	77	187	47	1902	171
Howard	2522	114	2052	202	219	43	4793	359
DISTRICT 11								
Frederick	502	59	1686	158	253	31	2441	248
Washington	938	140	2270	180	299	76	3507	396
DISTRICT 12								
Allegany	120	56	950	209	57	26	1127	291
Garrett	87	15	411	42	84	16	582	73
STATE	283,011	21,608	104,355	13,075	10,894	4377	398,260	39,060

\*Juvenile Causes not included.

# TABLE DC-5

COMPARATIVE MOTOR VEHICLE, CRIMINAL, AND CIVIL CASES

FILED IN THE DISTRICT COURT OF MARYLAND

	<u>1973-74</u>	<u>1974-75</u>	<u>1975-76</u>	<u>1976-77</u>	<u>1977-78</u>
DISTRICT 1					
Baltimore City	331,430	317,211	323,439	324,475	295,798
DISTRICT 2					
Dorchester	4929	5086	7801	9843	8786
Somerset	3061	3303	4871	6540	6191
Wicomico	11,572	12,647	14,293	15,117	15,492
Worcester	9023	9936	12,615	11,418	9290
DISTRICT 3					
Caroline	2670	2499	4277	7166	5777
Cecil	23,417	26,252	34,158	34,889	38,654
Kent	2291	2391	3592	4112	3770
Queen Anne's	3266	3471	6543	7498	6988
Talbot	4911	5429	8112	7624	6991
DISTRICT 4					
Calvert	5143	5369	8130	7518	7955
Charles	12,076	12,639	14,188	13,169	12,534
St. Mary's	7216	7494	10,350	9254	8848
DISTRICT 5					
Prince George's	147,332	185,884	210,687	240,748	241,791
DISTRICT 6					
Montgomery	84,595	108,738	119,163	106,886	105,368
DISTRICT 7					
Anne Arundel	50,797	55,783	73,230	75,640	71,406
DISTRICT 8					
Baltimore	115,838	131,330	155,626	167,497	183,754
DISTRICT 9					
Harford	25,097	31,931	42,797	41,958	38,232
DISTRICT 10					
Carroll	8914	11,724	14,277	14,834	14,931
Howard	17,131	22,040	26,660	29,176	32,475
DISTRICT 11					
Frederick	19,961	23,170	26,924	25,554	29,142
Washington	14,159	17,279	25,524	23,333	23,432
DISTRICT 12					
Allegany	8717	8598	11,832	11,012	10,453
Garrett	2413	2956	4389	4790	4649
STATE	915,959	1,013,160	1,163,478	1,200,051	1,182,707

# TABLE DC-6

## COMPARATIVE MOTOR VEHICLE CASES

PROCESSED BY THE DISTRICT COURT OF MARYLAND

	<u>1973-74</u>	<u>1974-75</u>	<u>1975-76</u>	<u>1976-77</u>	<u>1977-78</u>
DISTRICT 1					
Baltimore City	110,772	102,640	100,050	93,880	90,861
DISTRICT 2					
Dorchester	3370	2863	5500	7168	6560
Somerset	1831	1815	3078	4678	4944
Wicomico	8057	8379	9961	9962	11,068
Worcester	5702	6171	8503	7472	6457
DISTRICT 3					
Caroline	2013	1746	3271	6106	4806
Cecil	20,789	23,530	31,229	31,636	35,898
Kent	1390	1442	2414	2778	2945
Queen Anne's	2619	2706	5719	6579	6142
Talbot	3971	4267	6642	6168	5805
DISTRICT 4					
Calvert	4069	4143	6884	6025	6555
Charles	9786	10,209	11,288	10,294	9960
St. Mary's	5114	5199	7761	6795	6719
DISTRICT 5					
Prince George's	86,178	116,280	126,487	136,958	132,588
DISTRICT 6					
Montgomery	62,722	80,878	86,354	69,675	65,661
DISTRICT 7					
Anne Arundel	30,881	32,923	45,847	46,562	45,100
DISTRICT 8					
Baltimore	74,581	81,979	95,763	102,687	119,552
DISTRICT 9					
Harford	18,913	24,070	34,631	32,966	29,968
DISTRICT 10					
Carroll	6789	8858	11,048	11,127	11,862
Howard	12,637	16,514	20,396	22,451	25,448
DISTRICT 11					
Frederick	16,146	18,688	22,025	20,775	24,751
Washington	10,692	12,969	20,793	18,263	18,073
DISTRICT 12					
Allegany	5955	5718	8541	7768	7900
Garrett	1673	2176	3488	3743	3622
STATE	506,650	576,163	677,673	672,516	683,245

# TABLE DC-7

## COMPARATIVE CRIMINAL CASES

### PROCESSED IN THE DISTRICT COURT OF MARYLAND

	<u>1973-74</u>	<u>1974-75</u>	<u>1975-76</u>	<u>1976-77</u>	<u>1977-78</u>
DISTRICT 1					
Baltimore City	53,428	59,875	67,614	69,330	41,502
DISTRICT 2					
Dorchester	1181	1560	1325	1434	965
Somerset	811	1032	1089	1059	578
Wicomico	1999	2490	2323	2798	1359
Worcester	1910	2319	2670	2404	1349
DISTRICT 3					
Caroline	363	471	596	533	374
Cecil	1775	1724	1781	2072	1500
Kent	560	598	637	682	304
Queen Anne's	422	453	397	448	286
Talbot	636	832	977	916	582
DISTRICT 4					
Calvert	601	698	700	803	493
Charles	1622	1547	1963	1647	1164
St. Mary's	1412	1473	1707	1327	963
DISTRICT 5					
Prince George's	12,592	15,568	17,166	17,846	10,868
DISTRICT 6					
Montgomery	5442	6968	7481	8941	8380
DISTRICT 7					
Anne Arundel	9046	10,709	11,655	10,970	7907
DISTRICT 8					
Baltimore	12,394	15,394	17,560	16,957	11,271
DISTRICT 9					
Harford	2362	3014	3177	3473	2283
DISTRICT 10					
Carroll	962	1409	1469	2017	1167
Howard	1972	2380	2602	2722	2234
DISTRICT 11					
Frederick	2457	2719	2907	2681	1950
Washington	1766	2134	2333	2364	1852
DISTRICT 12					
Allegany	1876	2008	2361	2268	1426
Garrett	383	421	503	507	445
STATE	117,972	137,796	152,993	156,199	101,202

# TABLE DC-8

## COMPARATIVE CIVIL CASES

FILED IN THE DISTRICT COURT OF MARYLAND

	<u>1973-74</u>	<u>1974-75</u>	<u>1975-76</u>	<u>1976-77</u>	<u>1977-78</u>
DISTRICT 1					
Baltimore City	167,230	154,696	155,775	161,265	163,435
DISTRICT 2					
Dorchester	378	663	976	1241	1261
Somerset	419	456	704	803	669
Wicomico	1516	1778	2009	2357	3065
Worcester	1411	1446	1442	1542	1484
DISTRICT 3					
Caroline	294	282	410	527	597
Cecil	853	998	1148	1181	1256
Kent	341	351	541	652	521
Queen Anne's	225	312	427	471	560
Talbot	304	330	493	540	604
DISTRICT 4					
Calvert	473	528	546	690	907
Charles	668	883	937	1228	1410
St. Mary's	690	822	882	1132	1166
DISTRICT 5					
Prince George's	48,562	54,036	67,034	85,944	98,335
DISTRICT 6					
Montgomery	16,431	20,892	25,328	28,270	31,327
DISTRICT 7					
Anne Arundel	10,870	12,151	15,728	18,108	18,399
DISTRICT 8					
Baltimore	28,863	33,957	42,303	47,853	52,931
DISTRICT 9					
Harford	3822	4847	4989	5519	5981
DISTRICT 10					
Carroll	1163	1457	1760	1690	1902
Howard	2522	3146	3662	4003	4793
DISTRICT 11					
Frederick	1358	1763	1992	2098	2441
Washington	1701	2176	2398	2706	3507
DISTRICT 12					
Allegany	886	872	930	976	1127
Garrett	357	359	398	540	582
STATE	291,337	299,201	332,812	371,336	398,260

# TABLE DC-9

POPULATION AND CASELOAD PER JUDGE\*

	NUMBER OF JUDGES**	POPULATION PER JUDGE***	CASES FILED PER JUDGE			
			Civil	Motor Vehicle	Criminal	Total
DISTRICT 1						
Baltimore City	22	36,695	7429	4130	1886	13,445
DISTRICT 2						
Dorchester	1	30,000	1261	6560	965	8786
Somerset	1	20,100	669	4944	578	6191
Wicomico	1	61,900	3065	11,068	1359	15,492
Worcester	1	28,600	1484	6457	1349	9290
DISTRICT 3						
Caroline	1	22,700	597	4806	374	5777
Cecil	2	28,650	628	17,949	750	19,327
Kent	1	16,800	521	2945	304	3770
Queen Anne's	1	21,600	560	6142	286	6988
Talbot	1	26,700	604	5805	582	6991
DISTRICT 4						
Calvert	1	30,400	907	6555	493	7955
Charles	1	67,200	1410	9960	1164	12,534
St. Mary's	1	54,200	1166	6719	963	8848
DISTRICT 5						
Prince George's	9	76,077	10,926	14,732	1208	28,866
DISTRICT 6						
Montgomery	6****	99,766	5221	10,944	1397	17,562
DISTRICT 7						
Anne Arundel	6	61,333	3067	7517	1318	11,902
DISTRICT 8						
Baltimore	12	53,983	4411	9963	939	15,313
DISTRICT 9						
Harford	2	73,400	2991	14,984	1142	19,117
DISTRICT 10						
Carroll	1	88,400	1902	11,862	1167	14,931
Howard	2	59,550	2397	12,724	1117	16,238
DISTRICT 11						
Frederick	2	51,650	1221	12,376	975	14,572
Washington	2	55,550	1754	9037	926	11,717
DISTRICT 12						
Allegany	2	40,750	564	3950	713	5227
Garrett	1	25,600	582	3622	445	4649
STATE	80	52,746	4978	8541	1265	14,784

\*Chief Judge of District Court not included in statistics.

\*\*Number of Judges as of June 30, 1978.

\*\*\*Population Estimate for July 1, 1978, issued by the Maryland Center for Health Statistics.

\*\*\*\*Two Juvenile Court judges and number of Juvenile Causes not included in statistics.

APPENDIX

1  
2  
3  
4  
5  
6  
7  
8  
9  
10  
11  
12  
13  
14  
15  
16  
17  
18  
19  
20  
21  
22  
23  
24  
25  
26  
27  
28  
29  
30  
31  
32  
33  
34  
35  
36  
37  
38  
39  
40  
41  
42  
43  
44  
45  
46  
47  
48  
49  
50  
51  
52  
53  
54  
55  
56  
57  
58  
59  
60  
61  
62  
63  
64  
65  
66  
67  
68  
69  
70  
71  
72  
73  
74  
75  
76  
77  
78  
79  
80  
81  
82  
83  
84  
85  
86  
87  
88  
89  
90  
91  
92  
93  
94  
95  
96  
97  
98  
99  
100



CONTENTS OF APPENDIX

1. The State Board of Law Examiners
2. The Commission on Judicial Disabilities
3. Comparison of Rate in Filings and Growth in Judgeships
4. Appellate Judicial Nominating Commission
5. Trial Court Judicial Nominating Commissions
6. National Judicial College
7. Standing Committee on Rules of Practice and Procedure
8. Temporary Judicial Assistance to the Circuit Courts

## THE STATE BOARD OF LAW EXAMINERS

Hon. Jerrold V. Powers, Chairman, Court of Special Appeals  
(retired)

Charles H. Dorsey, Jr., Esq., Baltimore City Bar

William H. Price, II, Esq., Talbot County Bar

William F. Abell, Jr., Esq., Montgomery County Bar

David C. Daneker, Esq., Baltimore City Bar

Diane G. Schulte, Esq., Howard County Bar

J. Frederick Sharer, Esq., Allegany County Bar

Results of examinations given by the State Board of Law  
Examiners during 1977-78 were as follows:

<u>EXAMINATION</u>	<u>NUMBER OF CANDIDATES</u>	<u>TOTAL SUCCESSFUL CANDIDATES</u>	<u>NUMBER OF CANDIDATES TAKING FIRST TIME</u>	<u>NUMBER OF CANDIDATES PASSING FIRST TIME</u>
SUMMER 1977 (July)	743	430 (57.8%)	580	400 (68.9)*
Graduates University of Baltimore	223	104 (46.6%)	136	90 (66.1)*
Graduates University of Maryland	206	145 (70.3%)	190	142 (74.7)*
Graduates Out-of-State Law Schools	314	181 (57.6%)	254	168 (66.1)*
WINTER 1978 (February)	402	194 (48.2%)	168	103 (61.3)*
Graduates University of Baltimore	176	75 (42.6%)	70	44 (62.8)*
Graduates University of Maryland	76	41 (53.9%)	28	18 (64.2)*
Graduates Out-of-State Law Schools	150	78 (52.0%)	70	41 (58.5)*

\*Percentages are based upon the number of first-time candidates.

## THE COMMISSION ON JUDICIAL DISABILITIES

The Commission on Judicial Disabilities opened 30 investigative files during the fiscal year July 1, 1977 through June 30, 1978. This represents a considerable decrease from the 58 files opened in the previous year and the 68 opened in 1975-76. In addition, the Commission continues to receive numerous telephone calls and letters seeking advice as to how to make a complaint and making inquiries about the judiciary in general. No separate tabulation has been made of telephone inquiries or general letters. All letter writers and those telephone callers who desire it are sent a statement of the Commission's purpose and jurisdiction and instructions on how to file a complaint.

As has been the experience in the past, most complaints received were dismissed after a minimum of investigation because it was clear that there was no judicial misconduct or wrongdoing. The most prevalent complaint continues to be simply dissatisfaction with the outcome of litigation usually arising out of either domestic relations cases or minor criminal cases where a complainant has sworn out a warrant on a neighbor and the judge has found the neighbor not guilty.

The Commission meets as a body irregularly depending

upon the press of business. As of November 1, 1978, the Chairman of the Commission was the Honorable Richard P. Gilbert and Vice Chairman was William L. Marbury, Esq. Other members were: Honorable Edward D. Hardesty, Honorable Marshall A. Levin, Nathan Patz, Esq., Dr. Morris Sumner, and the Honorable James H. Taylor.

COMPARISON OF RATE IN FILINGS  
AND GROWTH IN JUDGESHIPS  
IN THE COURTS OF MARYLAND

	<u>1973-74</u>	<u>1977-78</u>	<u>Percent Change</u>
COURT OF APPEALS			
Number of Judges	7	7	0.0%
Filings During Year	259	140	-45.9%
COURT OF SPECIAL APPEALS			
Number of Judges	12	13	+8.3%
Filings During Year	1055	1350	+28.0%
CIRCUIT COURTS			
Number of Judges	80	90	+12.5%
Filings During Year	100,958	132,921	+31.7%
DISTRICT COURT			
Number of Judges	82	86	+4.9%
Filings During Year*	891,043	1,184,816	+33.0%
OVERALL TOTALS			
Number of Judges	181	196	+8.3%
Filings During Year	993,315	1,319,227	+32.8%

\*Includes criminal figures tabulated on a "defendant" basis rather than by offense.

APPELLATE JUDICIAL NOMINATING COMMISSION

Joseph Sherbow, Esq., Chairman

John W. T. Webb, Esq.	E. Ralph Hostetter
George W. White, Jr., Esq.	Henry J. Knott, Sr.
James J. Cromwell, Esq.	Odell H. Rosen
Andrew L. Haislip, Jr., Esq.	Edgar A. Merkle, Sr.
John G. Rouse, Jr., Esq.	George W. Settle, M.D.
Roger D. Redden, Esq.	Mrs. Alice Pinderhughes

TRIAL COURT JUDICIAL NOMINATING COMMISSIONS

First Judicial Circuit

Hon. Rex A. Taylor, Chairman

Lionel Bennett, Esq.	Charles E. Hearne, Jr., Esq.
Raymond D. Coates, Esq.	Walter Jones
Calvin S. Dean	Norman Polk
Betty K. Gardner	William H. Price, Esq.
William D. Gould, Esq.	Herman J. Stevens
John T. Handy	William W. Travers, Esq.

Second Judicial Circuit

Doris P. Scott, Esq., Chairperson

Robert E. Bryson	Ernest S. Cookerly, Esq.
L. Clark Ewing, Esq.	Hugh M. Gordy
Roland C. Kent, Esq.	Fred E. Speck
James M. Wales	Howard Wood, III, Esq.
William Biddle	Frank C. Sherrard, Esq.
Dr. Joseph H. McLain	

Third Judicial Circuit

Robert F. Skutch, Jr., Esq., Chairman

Angelo N. D'Anna	A. Freeborn Brown
Mrs. W. Lester Davis	Ralph E. Deitz, Esq.
Charles G. Greason	Stanley E. Hayden
Francis N. Iglehart, Esq.	J. Earle Plumhoff, Esq.
E. Scott Moore, Esq.	John E. Sheehan
Richard A. Reid, Esq.	Mrs. Dorothea M. Waters

Fourth Judicial Circuit

F. Perry Smith, Jr., Chairman

W. Kennedy Boone, III, Esq.	Irving M. Einbinder, Esq.
William H. Geppert	William L. Huff
Lem E. Kirk	Jospeh H. McElwee
David H. Miller, M.D.	W. Dwight Stover, Esq.
John H. Urner, Esq.	Willis T. Shaffer
Hugh D. Shires	Thomas N. Berry, Esq.

Fifth Judicial Circuit

Roy D. Cromwell, Esq., Chairman

Richard G. Anderson, Esq.	James K. Carmody, Esq.
William B. Dulany, Esq.	Edgar C. Gast, Jr.
H. Logan Holtgrewe, M.D.	Michael E. Loney, Esq.
Thomas O. Tilghman, Jr.	James N. Vaughan, Esq.
John B. Wright, Esq.	Mrs. Diane Rachuba
Allan W. Roadcap	John Sundstrom

Sixth Judicial Circuit

Vacancy, Chairman

John R. Benedict	Albert D. Brault, Esq.
William M. Canby, Esq.	Thomas L. Craven, Esq.
Daniel Warren Donohue, Esq.	Isidor M. Jacobson
Robert L. Kay, Esq.	Mrs. Rosalie Reilly
Donald B. Rice	Herbert S. Schroeder
Ben C. Shaw	James T. Wharton, Esq.

Seventh Judicial Circuit

John A. Buchanan, Esq., Chairman

Paul J. Bailey, Esq.	Thomas C. Hayden, Jr., Esq.
Paul D. Kerman	James J. Lombardi, Esq.
Gary R. Alexander, Esq.	Thomas F. Mudd, Esq.
Dean John M. Sine	Dallas S. Ward, Esq.
Henry Thomas Waring	Mrs. Mabel B. Wilkinson
James T. Marsh	Robert B. Williams

Eighth Judicial Circuit

Marshall M. Meyer, Chairman

Merrill L. Bank  
Mrs. Pearl Cole Brackett  
William R. Dorsey, III, Esq.  
Frederick J. Green, Jr., Esq.  
M. King Hill, Jr., Esq.  
I. D. Shapiro

Herbert J. Belgrad, Esq.  
Maurice Braverman, Esq.  
Sidney Epstein  
Raymond V. Haysbert, Sr.  
Mrs. Betty R. Connor  
Marvin B. Steinberg, Esq.



NATIONAL JUDICIAL COLLEGE

One circuit court judge attended the 1978 basic four week session of the National Judicial College in Reno, Nevada, bringing to fifty-three the number Maryland has graduated from the school. Forty of those are presently serving on the Bench. The graduates and their years of attendance follow. Those no longer on the bench are indicated (\*).

1964

Hon. William B. Bowie\*

Hon. Harry E. Dyer, Jr.\*

1965

Hon. Robert E. Clapp, Jr.

1966

Hon. T. Hunt Mayfield\*  
Hon. George B. Rasin, Jr.

Hon. Plummer M. Shearin  
Hon. Edward O. Weant, Jr.

1967

Hon. E. Mackall Childs  
Hon. Harry E. Clark  
Hon. Irving A. Levine\*  
Hon. H. Kemp MacDaniel  
Hon. Joseph M. Mathias

Hon. Robert B. Mathias\*  
Hon. Samuel W. H. Meloy  
Hon. Ridgely P. Melvin, Jr.  
Hon. John P. Moore  
Hon. Paul T. Pitcher\*

1968

Hon. Albert P. Close  
Hon. Thomas J. Curley

Hon. Thomas J. Kenney\*  
Hon. H. Kenneth Mackey

1969

Hon. W. Harvey Beardmore\*

Hon. David Ross  
Hon. Bruce C. Williams

1970

Hon. Joseph C. Howard

1971

Hon. Samuel W. Barrick  
Hon. Solomon Liss

Hon. J. Albert Roney, Jr.  
Hon. James L. Wray

1972

Hon. Walter H. Moorman\*

1973

Hon. David L. Cahoon  
Hon. Marshall A. Levin  
Hon. Joseph A. Mattingly

Hon. William H. McCullough  
Hon. Paul W. Ottinger\*  
Hon. James A. Wise\*

1974

Hon. Frank E. Cicone

Hon. Philip M. Fairbanks  
Hon. John F. McAuliffe

1975

Hon. Karl F. Biener\*  
Hon. Edward D. Higinbotham

Hon. Richard B. Latham  
Hon. Morris Turk

1976

Hon. Mary Arabian  
Hon. George W. Bowling

Hon. Charles E. Edmondson  
Hon. Martin B. Greenfeld  
Hon. Jacob S. Levin

1977

Hon. William E. Brannan\*  
Hon. Nathaniel W. Hopper

Hon. Albert T. Blackwell, Jr.  
Hon. Stanley B. Frosh

1978

Hon. Edward A. DeWaters, Jr.

STANDING COMMITTEE ON RULES OF PRACTICE AND PROCEDURE

Hon. David Ross, Chairman; Supreme Bench of Baltimore City

Hon. Robert M. Bell, District Court for Baltimore City

Albert D. Brault, Esq., Montgomery County Bar

Hon. Clayton C. Carter, Circuit Court for Queen Anne's County

Leo William Dunn, Jr., Esq., Prince George's County Bar

John O. Herrmann, Esq., Baltimore City Bar

Alexander G. Jones, Esq., Somerset County Bar

Dean Michael J. Kelly, University of Maryland School of Law

W. Garrett Larrimore, Esq., Clerk, Circuit Court for Anne Arundel County

James J. Lombardi, Esq., Prince George's County Bar

Hon. John F. McAuliffe, Circuit Court for Montgomery County

George W. McManus, Jr., Esq., Baltimore City Bar

Paul V. Niemeyer, Esq., Baltimore City Bar

George A. Nilson, Esq., Deputy Attorney General of Maryland

Hon. Joseph E. Owens, Chairman, Judiciary Committee, House of Delegates of Maryland

Thomas J. Peddicord, Jr., Esq., Chief Legislative Officer to the Acting Governor

Hon. Kenneth C. Proctor, Circuit Court for Baltimore County (retired); Emeritus

Russell R. Reno, Jr., Esq., Baltimore City Bar

Lawrence F. Rodowsky, Esq., Baltimore City Bar

Robert J. Ryan, Esq., Baltimore County Bar

Hon. Melvin A. Steinberg, Judicial Proceedings Committee, Maryland Senate

Melvin J. Sykes, Baltimore City Bar

Neil Tabor, Esq., Baltimore City Bar

Arnold M. Weiner, Esq., Baltimore City Bar

---

George B. Gifford, Esq., Reporter

William M. Simmons, Esq., Assistant Reporter

Professor Bernard Auerbach, Assistant Reporter

TEMPORARY JUDICIAL ASSISTANCE TO THE CIRCUIT COURTS  
PURSUANT TO THE TEMPORARY JUDICIAL ASSIGNMENT PLAN\*  
July 1, 1977 - June 30, 1978

<u>Circuit Providing Assistance</u>	<u>Circuit Assisted</u>	<u>Number of Assignments</u>	<u>Judge Days</u>
First	Sixth, Eighth	7	38
Second	Third, Fifth, Sixth, Eighth	8	35
Third	Eighth	2	9
Fourth	Third, Sixth, Eighth	7	29
Fifth	Sixth, Eighth	3	12
Sixth	Eighth	1	5
Seventh	Third, Fifth, Eighth	4	19
Eighth (Assignments here on exchange basis only)	-	-	-
TOTAL		32	147

Pursuant to Section 1-302 of the Courts and Judicial Proceedings Article, seven different retired judges were designated to assist the circuit courts for 68 judge days; three retired District Court judges assisted the District Court for 57 judge days.

Pursuant to the authority vested in him under the Constitution and Maryland statutes, the Chief Judge of the District Court made 385 assignments for a total of 664 judge days in the District Court. Also, the Chief Judge of the Court of Appeals designated District Court judges to sit at the circuit court level for over 250 judge days, 183 of which were in the Criminal Court of the Supreme Bench of Baltimore City.

\* This does not include assistance to the Circuit Courts by the District Court, exchanges between circuits, assignments within circuits pursuant to Maryland Rule 1207 or assistance by retired judges.

