

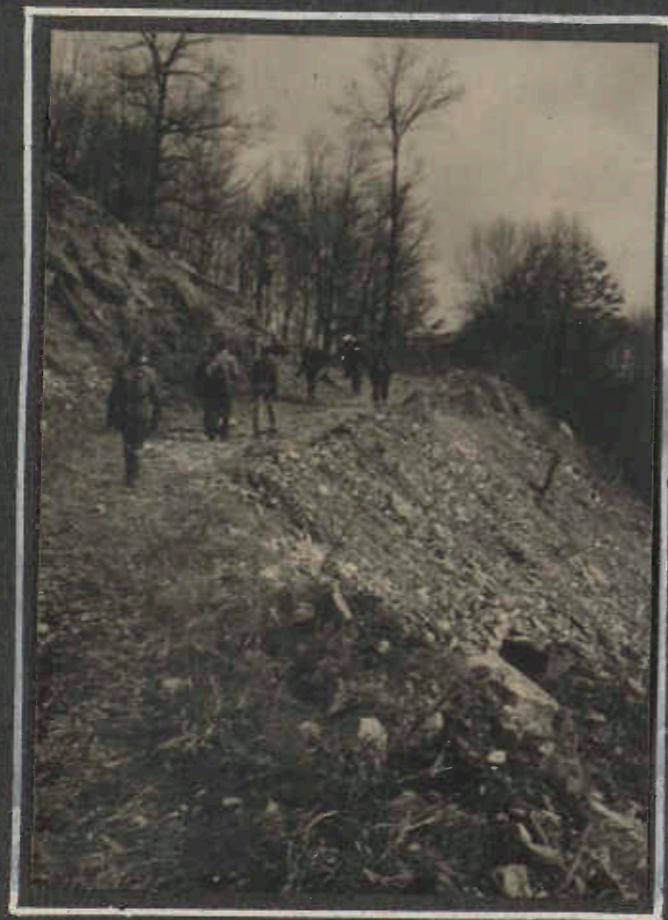
THE
MOUNTAIN CLUB
OF MARYLAND

1944

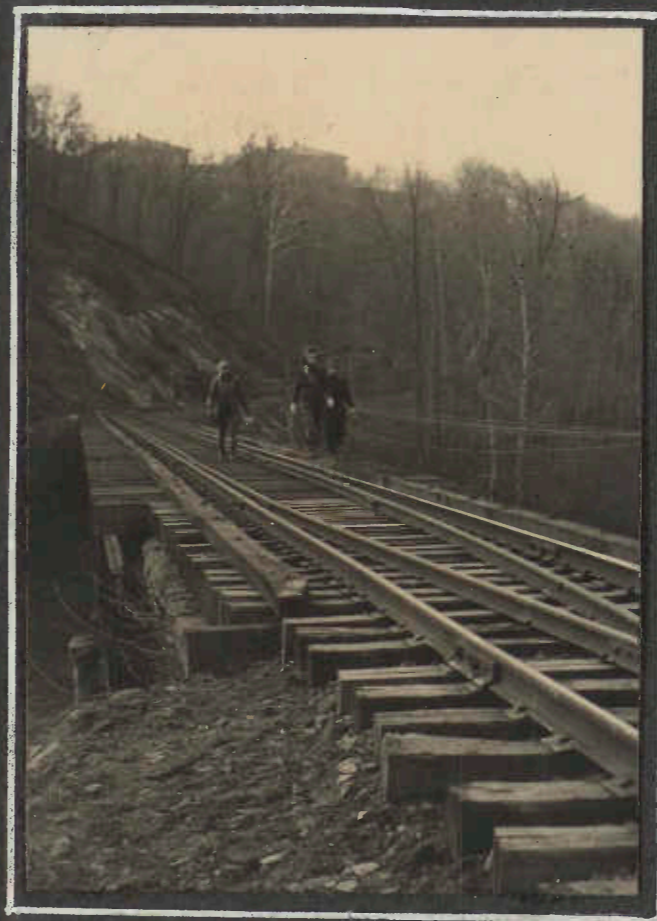
CARNEY - GLEN ARM - GUNPOWDER RIVER
 JANUARY 30, 1944



WINSLOW CHECKS MAP WITH THE ROAD SIGNS



SHENANDOAH TRAILS
 IN THE GUNPOWDER COUNTRY



ON THE "MA AND PA" TRESTLE

Pictures - W.R. Roessler

ROUNDAABOUT RUXTON AND ROCKLAND
 FEBRUARY 20TH



LITTLE WAS REPORTED
 ABOUT THIS TRIP
 EXCEPT THAT THE
 FIRE WAS WELCOMED
 BECAUSE THE DAY
 WAS GROWING
 COLDER - AND
 SHORTER DUE TO
 CONTRACTION
 CAUSED BY COLD.



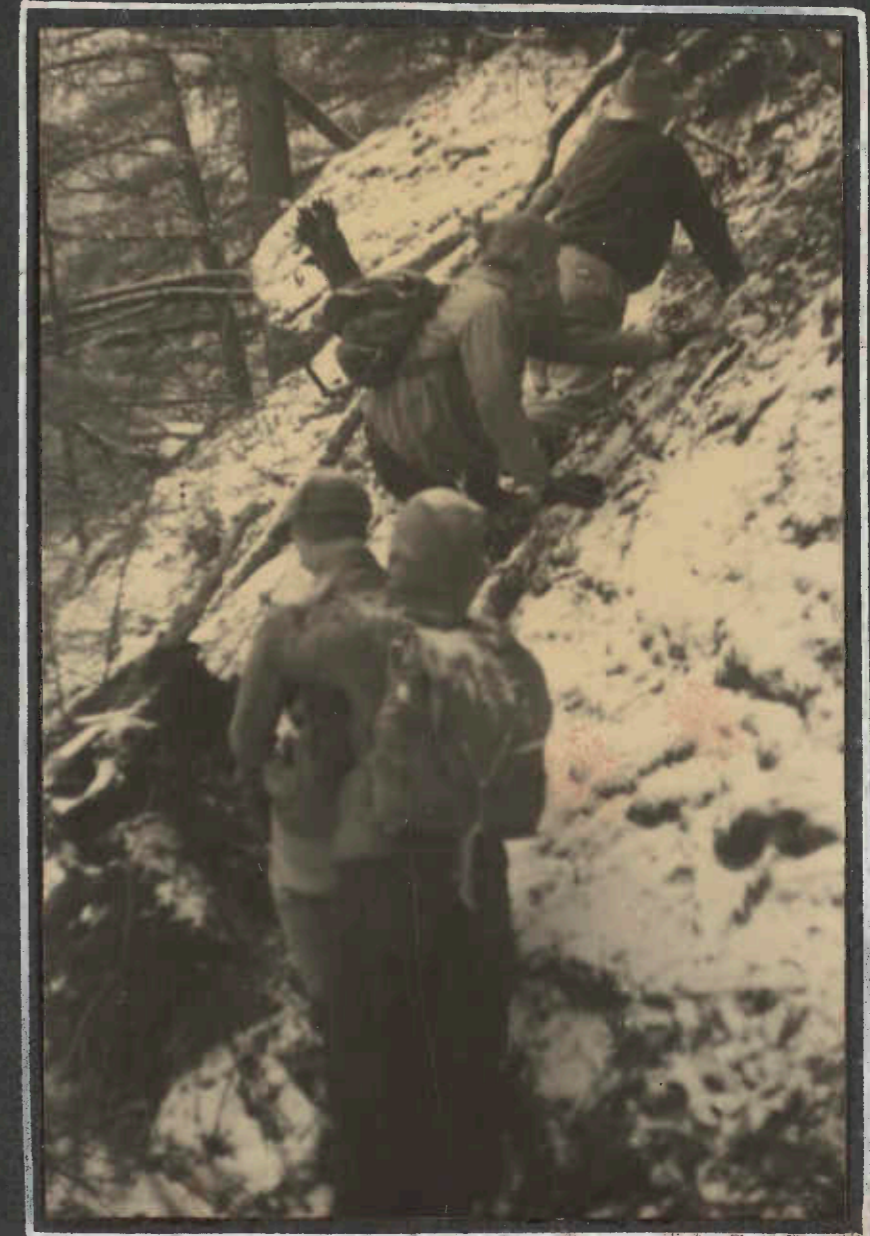
ALEC KENNEDY
 WAS THE
 LEADER;
 WE NOTE
 ALSO PRESENCE
 OF GWLADYS
 HUGHES -
 ON LAST
 CLUB TRIP
 BEFORE
 GOING INTO
 RED CROSS
 SERVICE



Pictures - Grace Wagner



BRICKWORK ON
OLD BARN WAS
INTERESTING



POWDER SNOW ON
ICY CRUST - -
GOING UP THE
RIDGE - -



YES, GOOD PEOPLE,
IT'S TIME TO EAT

"THE WEATHER CLOSES
IN" IN THE GORGE
OF THE GUNPOWDER.
VISIBILITY LIMITED.



MUST BE WARMER
IN THE LEAVES



MANCHESTER TO NEW FREEDOM - MARCH
"THE RETREAT FROM MOSCOW" -



FRANCIS - QUESTIONS



DOROTHY - AGREES



ELIZABETH SHUE LIKES SNOW



WINSLOW - SNOW RATHER
THAN OTHERWISE CAPPED



ELOISE -



ALEC KNEW IT ALL ALONG



RAY COSTA
CALM, COOL, AND COLLECTED

BRUNSWICK TO HARPERS FERRY
OVER SHORT HILL



WAR

ON SHORT HILL - WEVERTON
AND SOUTH MOUNTAIN ACROSS
THE POTOMAC



WAR

A CHANCE TO WASH - BILL ARNOLD OFFERS SOAP

THE P.A.T.C. OF WASHINGTON
JOINING - APRIL 16, 1944



WAR

THE BANDANA IS STANDARD
EQUIPMENT WITH OS HEARD



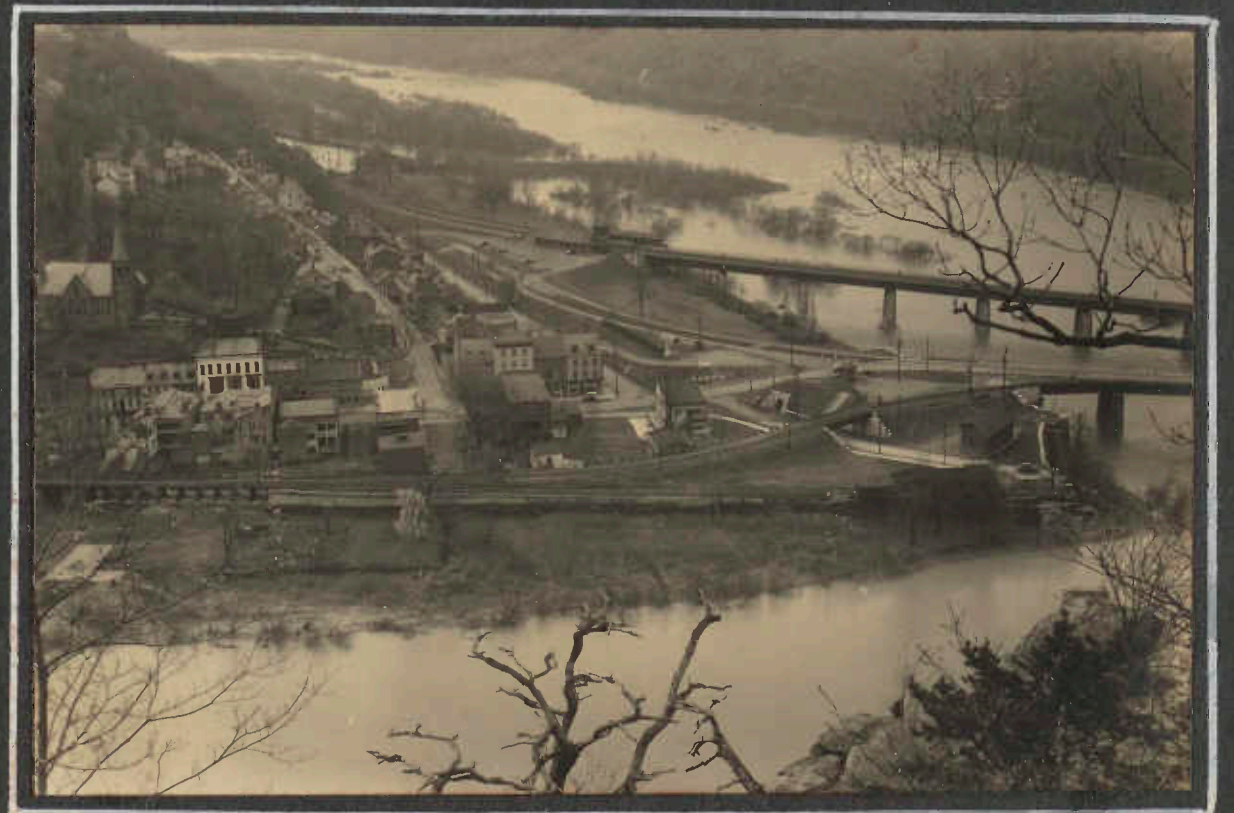
WAR

THE BOARD APPARENTLY
KEEPS THE SHENANDOAH
FERRYMAN FROM GOING
OVERBOARD



WAR

DOWN THE POTOMAC - SOUTH MOUNTAIN - SHORT HILL



WAR

THE TRADITIONAL PICTURE OF HARPERS FERRY -
FROM LOUDOUN HEIGHTS

ONE MORE FROM THE SHORT HILL TRIP



THE "SUSPENSION BRIDGE" OVER DUTCHMANS CREEK
COULD STAND IMPROVEMENT

WMA



A BIT OF ACTING FOR THE CAMERA

OOH



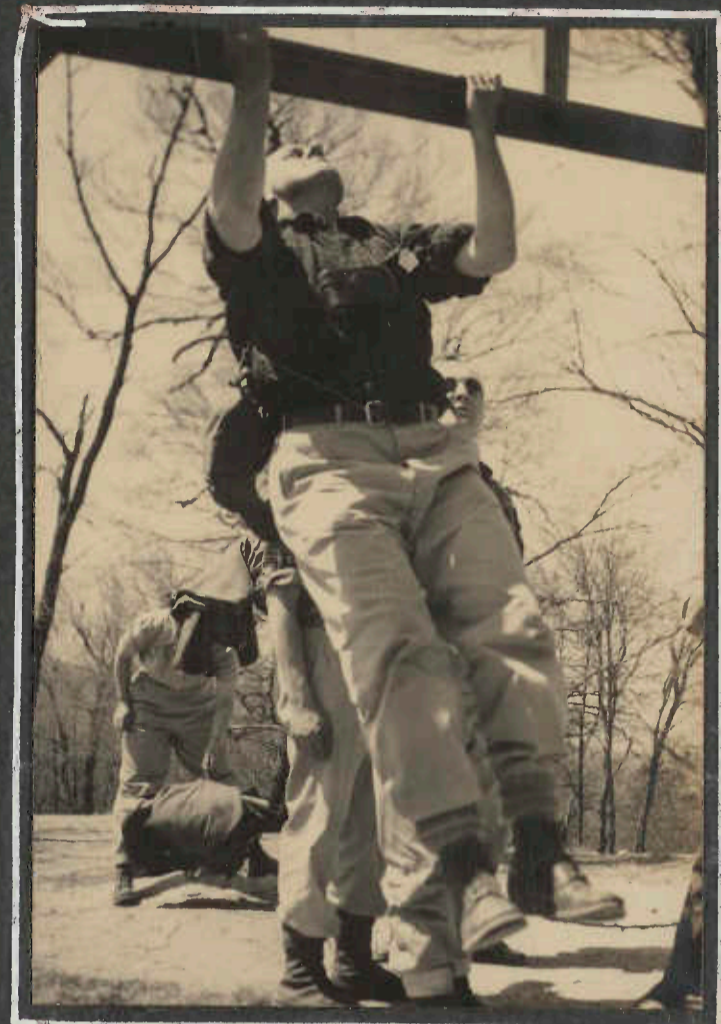
OOH

LOOKOUT TOWERS ARE
ALWAYS POPULAR

VIEWS FROM THE
MT. DUNLOP TOWER

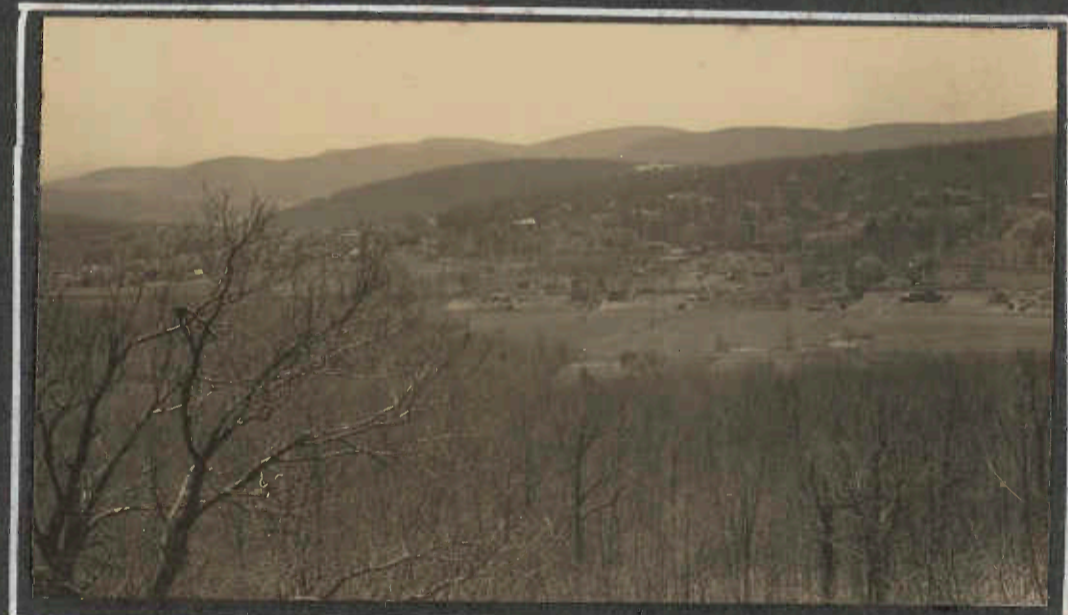
GENERALLY
WESTWARD

MT. DUNLOP
APRIL 30, 1944



OS CAN STILL DO IT!

WMA



WMA



WMA

TO THE
NORTH
NOTE HIGHWAY 16

THE RISE OUT
OF PENMAR
TO HIGH ROCK
AND THE TOWER
ON QUIRAUK



WMA



OOH



OOH

MUST BE ON THE APPALACHIAN TRAIL



OOH

LUNCH AT MACKIE RUN LEAN-TO

BLUE RIDGE SUMMIT
MT. DUNLOP
PEN-MAR



WMR

TIME TO
SPARE AT
PEN-MAR

THE BOOK
IS PROBABLY
"HIKING
MADE EASY"



OOH

IT'S NICE NOT TO MISS THE TRAIN!



WMR

CHECKING
ON THE
CHOCCHO'S
TIME
LATE AGAIN!

THE PIGEON HILLS - JUNE 25, 1944



THIS RANGE OF HILLS IS NORTHEAST OF HANOVER, PENNSYLVANIA. SEEN FROM THE ROAD ENROUTE TO DARK HOLLOW, ETC. FOR YEARS THEY BECAME A PLACE TO HIKE WITHIN RANGE OF WARTIME TRAVEL.



A BEAUTIFUL AFTERNOON AFTER A GRAY START



WE FAILED TO LEARN WHO TOLD WHAT STORY, BUT IT MUST HAVE BEEN GOOD!



AT LEFT WE'RE LISTING THEM FROM END OF LINE FORWARD -



RAIN ATTIRE, ASSORTED

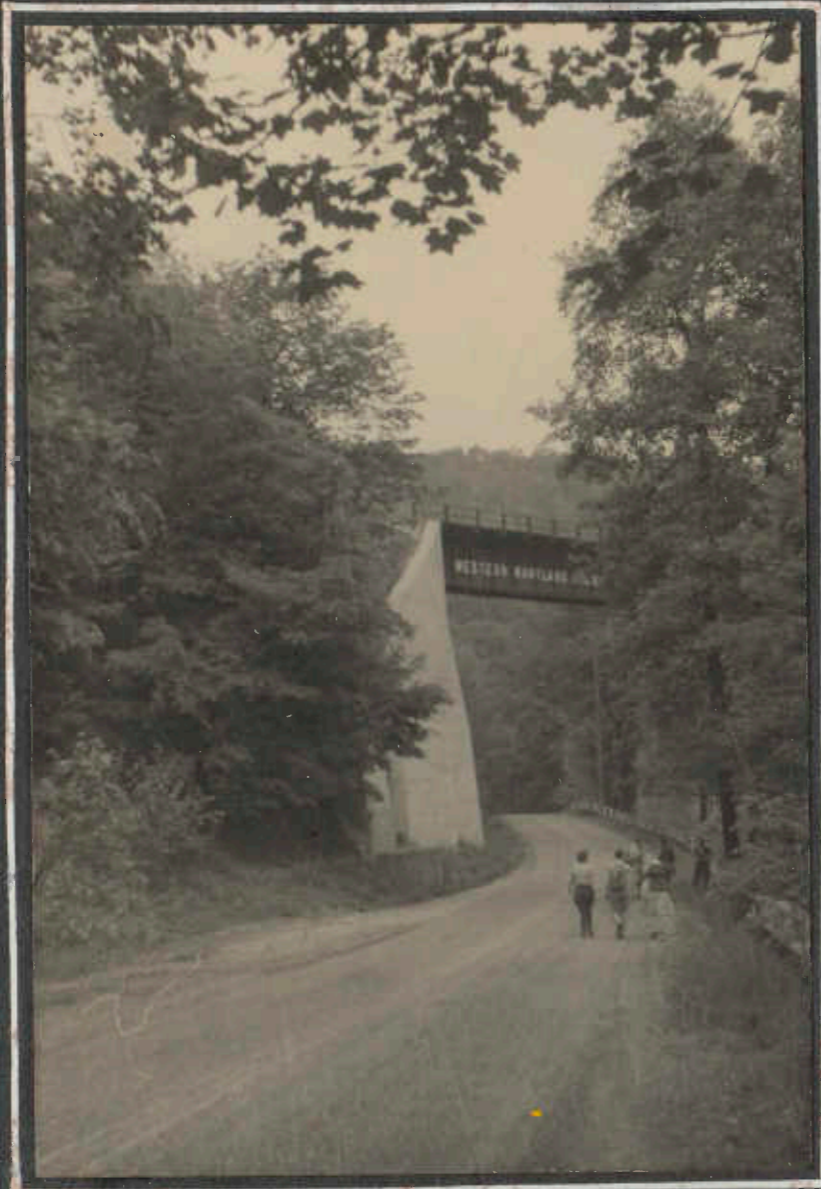
ELOISE COCHEL, DOROTHY CALAFIORE, MORGAN BARR, OS HEARD, ELIZABETH SHUE, LAWRENCE BRUNS, MIRIAM BRUNS, SYLVIA MOSES, ALEC KENNEDY, ALICE ROESSLER, FRANCIS OLD, DOROTHY OLD, LLOYD SHUE, WINSLOW HARTFORD. THERE WAS ALSO A PHOTOGRAPHER -

LUNCH SPOT DIM, VERY DIM, ON THE HORIZON TO THE NORTH IS THE LONG RIDGE OF SOUTH MOUNTAIN



WORK TRIPS

SANITARIUM STATION TO THURMONT
MAY 21, 1944



PART OF THE WAY BY ROAD



AT THURMONT STATION - BEFORE THE TRAIN



PASSENGERS ON THE TRUCK -
ON THE JUNE TRIP - THINK
ABOUT THE WEEDERS AND SUCH



SUPPERTIME AT LAUREL LAKE



THE DAY IS YOUNG - JUNE TRIP - FRED WARD DROVE THE
TRUCK BUT WAS APPARENTLY PERSUADED TO GET
IN FOR THE PICTURE.

MCM INVADES NEW HAMPSHIRE'S PRESIDENTIALS
JULY 31 - AUGUST 7, 1944

THE STORY IN PHOTOGRAPHS



AFTER AN ALL-NIGHT RIDE WE ARRIVED AT OUR 'BASE CAMP' - THE DE-LUXE A.M.C. HUT AT PINKHAM NOTCH

00H



00H

FIRST TRIP - A SHORT CLIMB UP THE LEDGES ON MT. WILDCAT, WHERE THE AMBITIOUS MEMBERS OF THE PARTY GOT A GOOD LOOK AT WHAT WAS IN STORE NEXT DAY.



THEN DOWN THE MOUNTAIN TO 80-FT. GLEN ELLIS FALLS

00H



GW

BEA HEARD LOOKS ACROSS PINKHAM NOTCH TO CARTER DOME AND WILDCAT FROM THE HUNTINGTON RAVINE TRAIL



GW

HIGH UP NOW - DOT, MARY, AND BEA LOOK OVER THE AFOREMENTIONED TO DOUBLE HEAD AND OTHER PEAKS OF THE WILD RIVER COUNTRY.

PRESIDENTIALS TRIP - AUGUST 1944



GW

BUT STILL WE GO HIGHER - JOE AND ESTELLE STOP FOR A BREATHER AND A LOOK AT 5500 FT. BOOT SPUR AND A BIG BLACK CLOUD - WHICH DIDN'T MEAN ANYTHING AFTER ALL -



GW

AND STILL UP - NEAR WASHINGTON'S SUMMIT MORGAN AND HARRY LOOK DOWN ON THE CRAWFORD PATH, MT. MONROE, AND THE SOUTHERN PEAKS, WITH THE WEST SIDE OF CRAWFORD NOTCH BEYOND.



WH

FROM THE SUMMIT - THE COG RAILWAY, THE ROAD, AND THE THREE GREAT NORTHERN PEAKS - JEFFERSON, ADAMS, AND MADISON.



GW

THE CLOUDS ROLL UP MAJESTICALLY ON WASHINGTON'S SUMMIT

NARRATIVE - CAPTIONS - ON PICTURES OF THE PRESIDENTIALS TRIP BY WINSLOW HARTFORD.

PHOTOGRAPHERS - GRACE WAGNER, OSBORNE O. HEARD, WINSLOW HARTFORD.

PRESIDENTIALS TRIP - AUGUST 1944



WH



WH

THE CONE OF WASHINGTON
TOWERS 1300 FEET ABOVE
ONE OF THE LAKES



WH

UPPER LEFT- CAIRNS
MARK THE TRAIL FROM
WASHINGTON TO THE
LAKES-OF-THE-CLOUDS
HUT. MT. MONROE
BEYOND.

AUGUST 3d. QUITE A
MOB AT THE LAKES HUT
OUR FOUR NIGHTS
THERE. JUST ABOUT
THIS TIME, BREAKFAST
IS BEING SETTLED
PRIOR TO A JAUNT
OVER THE SOUTHERN
PEAKS. MORGAN,
JOE, HARRY, WINSLOW,
AND ESTELLE VISIBLE.



WH

A LITTLE PORTRAITURE:
HARRY, WITH AMC LUNCH



WH

AND NOW THAT WE'RE ALMOST
ALL TOGETHER, THE LEADER
LAYS DOWN THE LAW, OR
TRIES TO FIGURE OUT WHO'S
GOT LUNCHES, OR SOME
OTHER WEIGHTY MATTER.
THE GANG CAN EITHER
TAKE IT OR LEAVE IT.
MOSTLY, THEY'RE LEAVING IT.

"PRESIDENTIALS" TRIP - AUGUST 1944



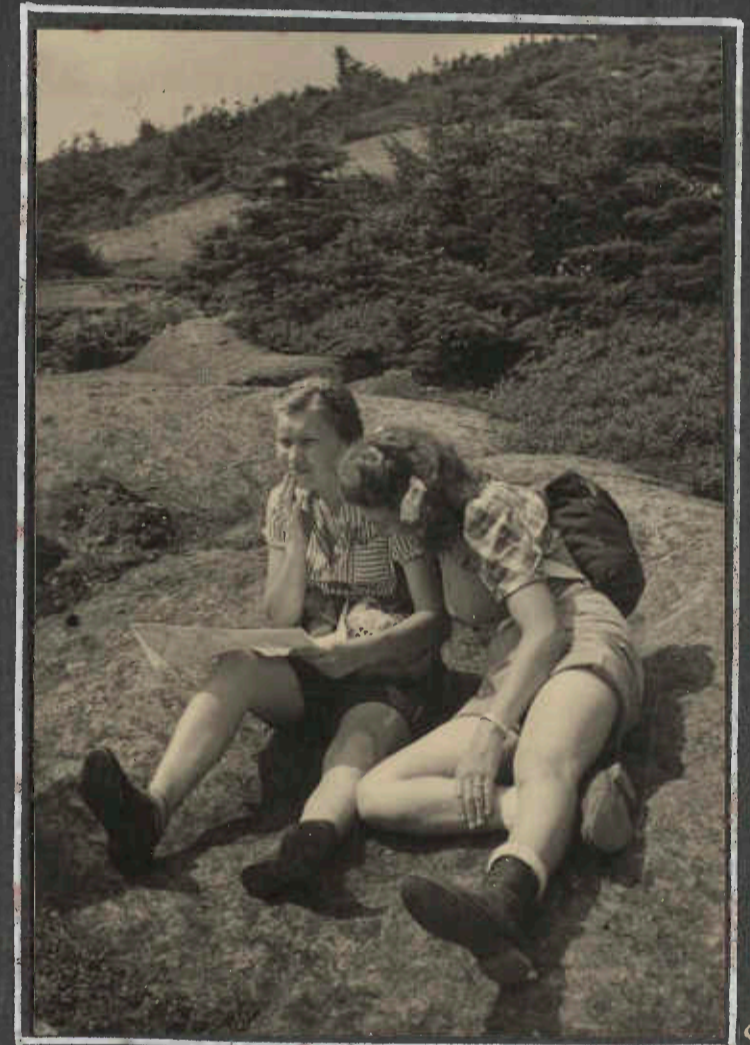
ESTELLE AND MARY

00H



WH

AROUND THE SHOULDER OF MONROE, AND THIS MAZE OF PEAKS LOOMS TO THE SOUTH. THE VIEW GOES OUT FOR FIFTY MILES OR SO, WITH THE SPIKE OF CHOCORUA, 30 MILES AWAY, CLEAR ON THE LEFT.



00H

WHAT'S THIS? TWO RECRUITS FOR THE CAN-READ-A-MAP-SQUAD? BY THE LOOKS OF THINGS WE'RE SOMEWHERE JUST SOUTH-EAST OF ROUND-TOP!



WH

APPROACHING MOUNT PLEASANT ALONG THE CAIRN-MARKED CRAWFORD PATH.

FROM MT. CLINTON, MTS. WEBSTER AND JACKSON, AND WILLEY AND FIELD FORM THE GAP OF CRAWFORD NOTCH. MT. CARRIGAIN FARTHER AWAY ON THE LEFT.



WH

IN THE PRESIDENTIALS- AUGUST 1944



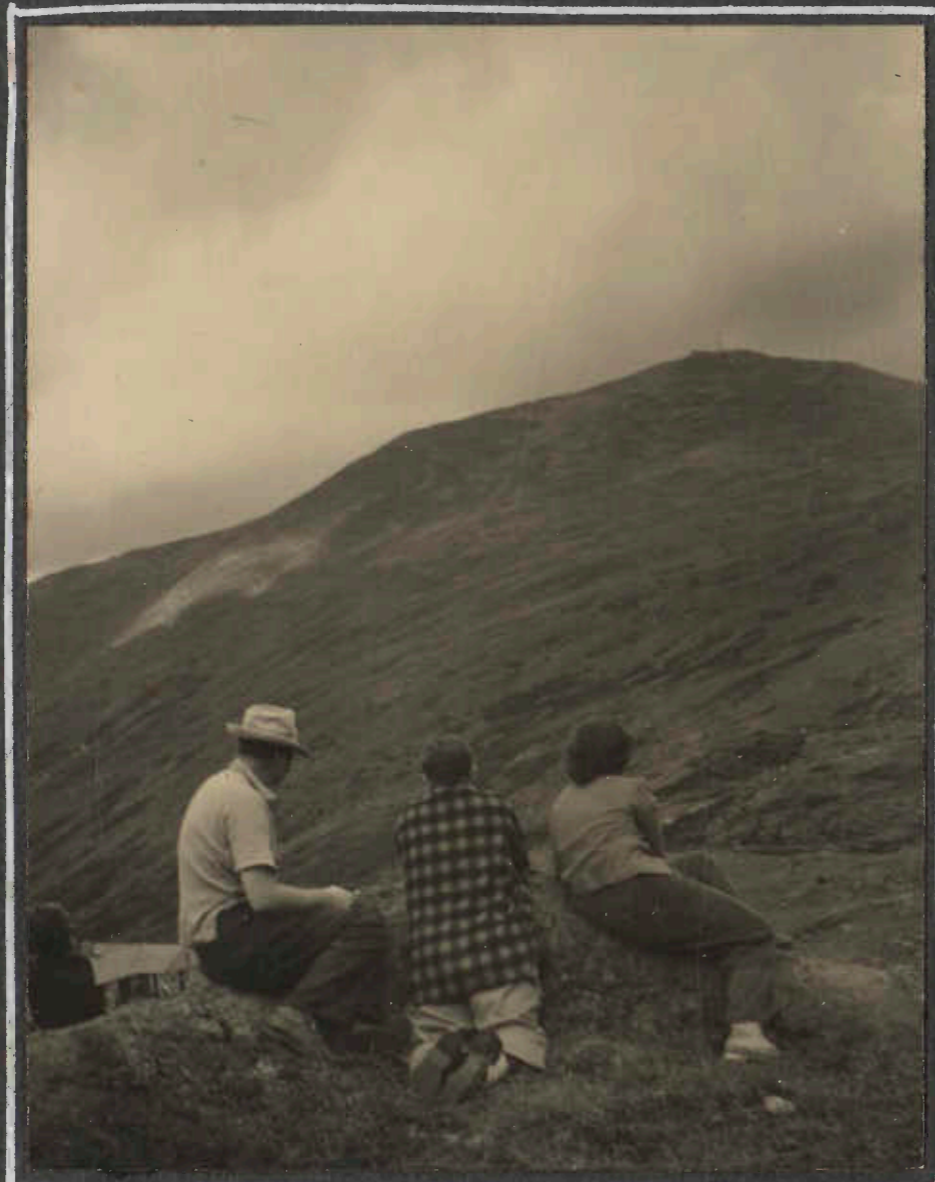
AT MIZPAH SPRING SHELTER, MT. JACKSON AT RIGHT, AND CHOCORUA IN THE FAR DISTANCE.

WH



THE WAY HOME. ON CLINTON AGAIN LOOKING UP THE CRAWFORD PATH TO PLEASANT AND WASHINGTON, THE HIGH POINT. DAKES GULF ON THE RIGHT.

WH



SOME OF THE GANG TOOK IT EASY AND WENT ONLY TO MT. PLEASANT. FROM MT. MONROE, JOE, HARRY, AND MARY LOOK OVER THE HUTS TO WASHINGTON

90H



THE SUN WAS HOT -- AND A SHREDDED WHEAT BOX MAKES MIRIAM A LOVELY SUNSHADE

GW



THE LAKES HUT. AMMONOOSUC RAVINE TO THE LEFT, JEFFERSON AND CLAY ON THE SKYLINE.

GW

MCM PRESIDENTIALS TRIP - AUGUST 1944



JOE PREFERS DARK CHEATERS AND A CURTAIN FOR THE NECK.

OOH



AND THIS IS GRACE!

OOH



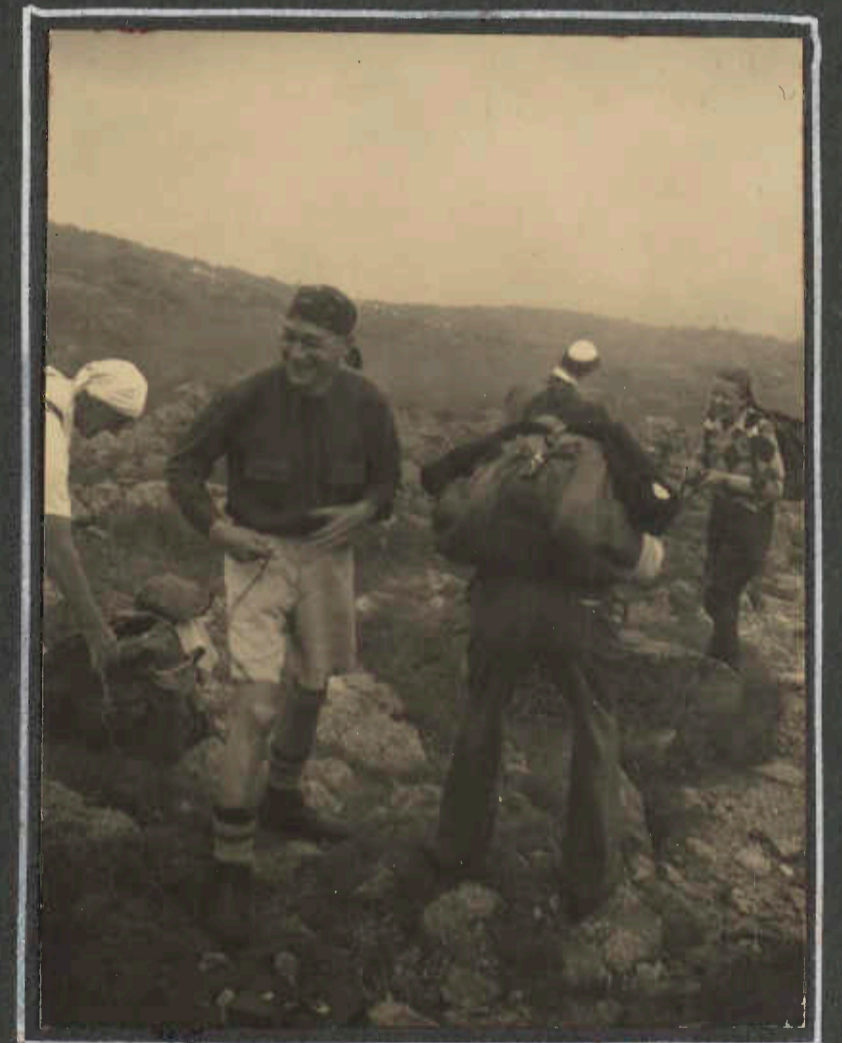
MIRIAM GOT IT IN THE ELBOWS -

OOH



THE FOG DRIFTS IN FOR A BIT ALONG THE GULFSIDE TRAIL - GRACE, IN HER LADY-FROM-MARS RIG, AND OS.

GW



ENOUGH RESTING! THE LEADER SAYS, "WELL -"

GW

IN THE
PRESIDENTIALS
AUGUST 1944



WH



OOH

← FROM THE LUNCH
SPOT AT EDMANDS CO.,
AN AWFUL LOT OF
MT. ADAMS TO
GO OVER BEFORE
WE REACH THE
MADISON HUTS.

BUT THIS IS LUNCH -
OR THE REST AFTER
IT! WE DARE YOU
TO MAKE US MOVE!
←



OOH

WE ARE DISINTEGRATING! MORGAN
DOES SOME REPAIRING ON
MARY'S BUM KNEE.



OOH

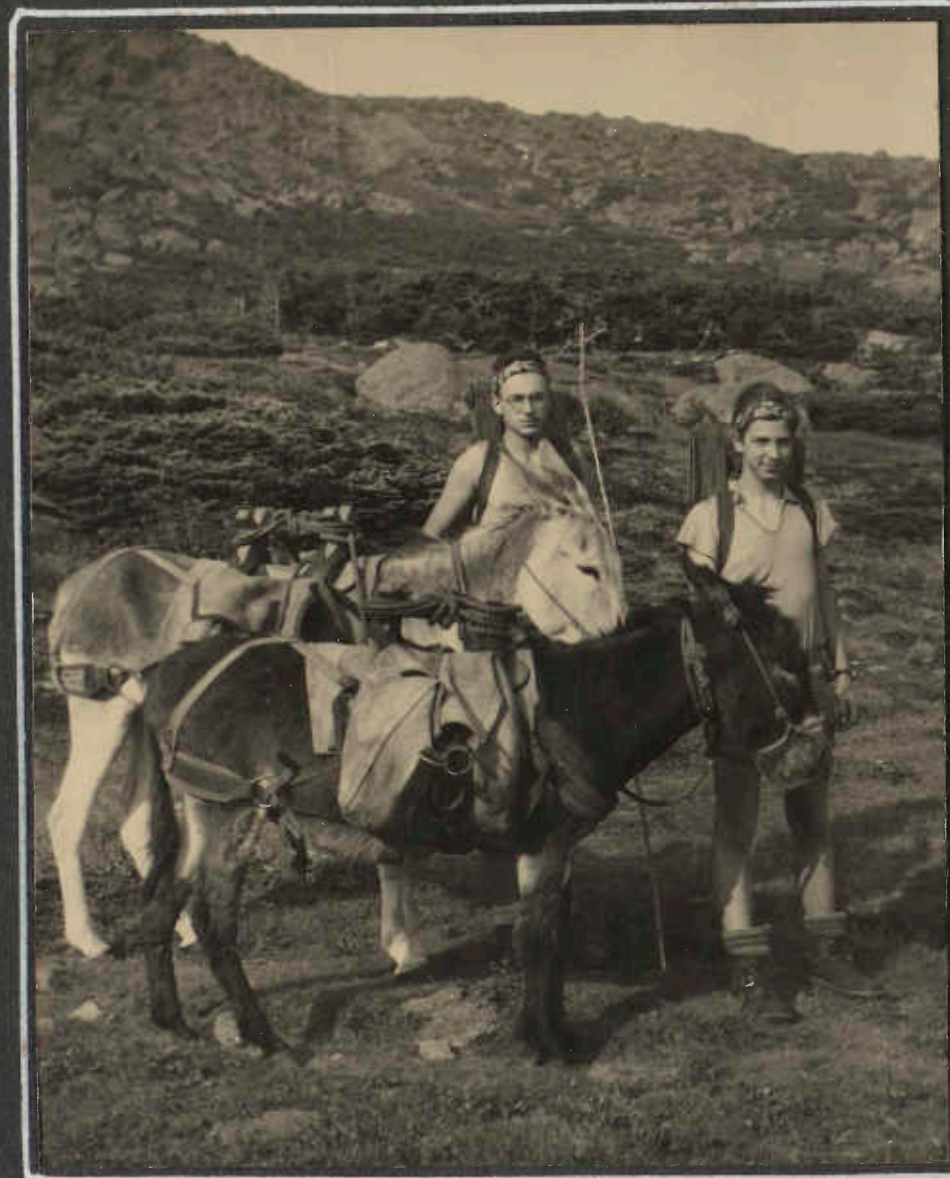


OOH

AND MIRIAM QUIETLY COLLAPSES WHILE
OS REMOVES A FEW MUSCLE KINKS

NOT ONLY SUNBURN BUT SORE DOGS! OLIVER
GETS A SOCK STRAIGHTENED OUT, AND
MORGAN SEEMS CONCERNED WHETHER
HE'LL MAKE IT!

THE MCM IN THE PRESIDENTIALS - AUGUST 1944



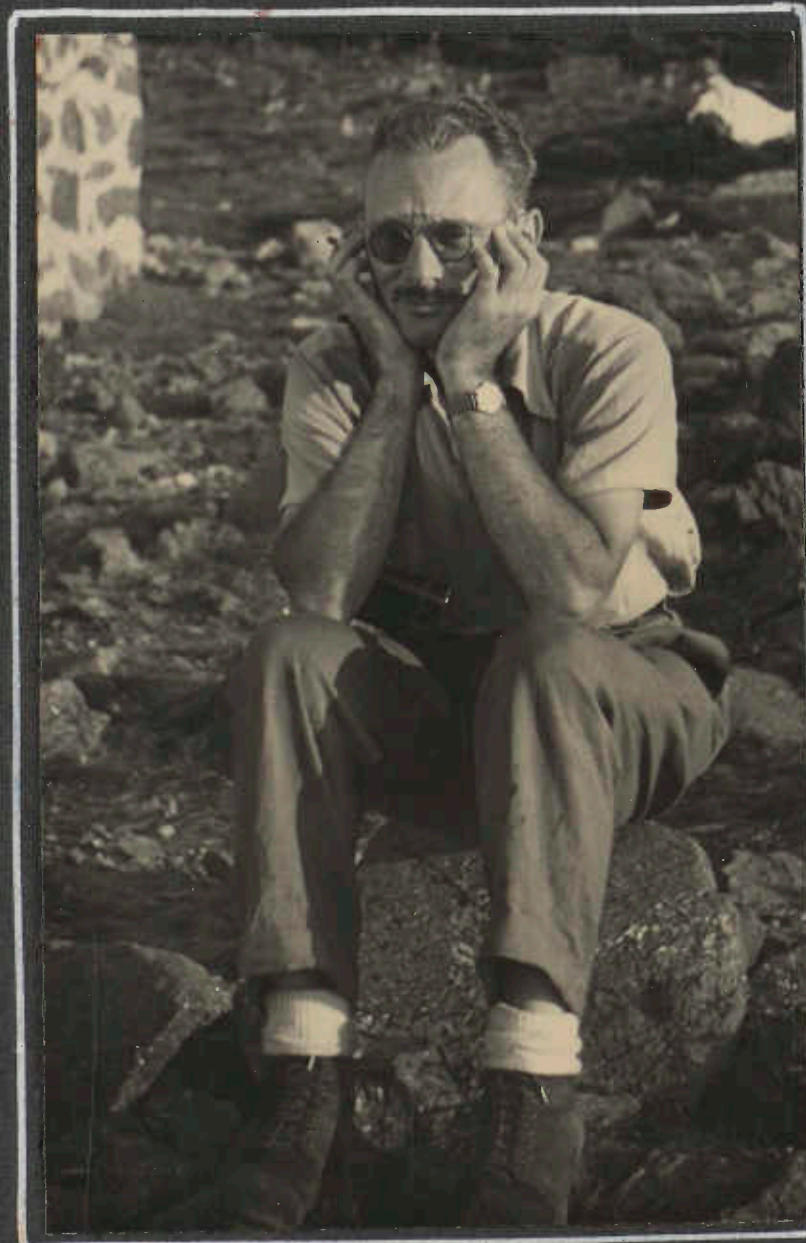
OTHER WILD LIFE AT MADISON. THESE ARE THE BURROS WHICH MR. RHODE, PICTURED BELOW, HAS RECOMMENDED FOR OVERNIGHTS AND PACK TRIPS. THEY POSE WITH HUT BOYS.

GW



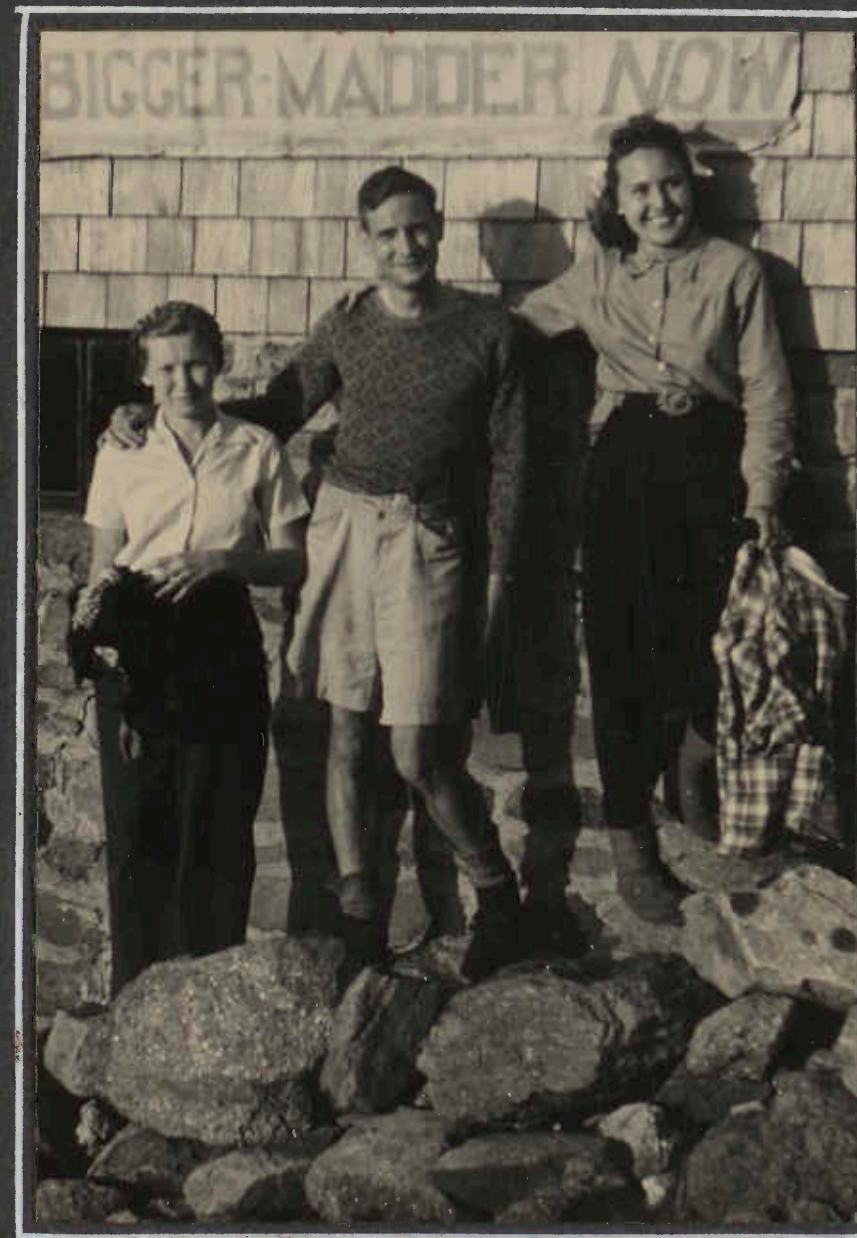
OOH

THE SURVIVORS ARE NOW READY FOR KING RAVINE. ESTELLE IS GETTING THE WHITE MOUNTAIN VERSION OF BULOVA TIME.



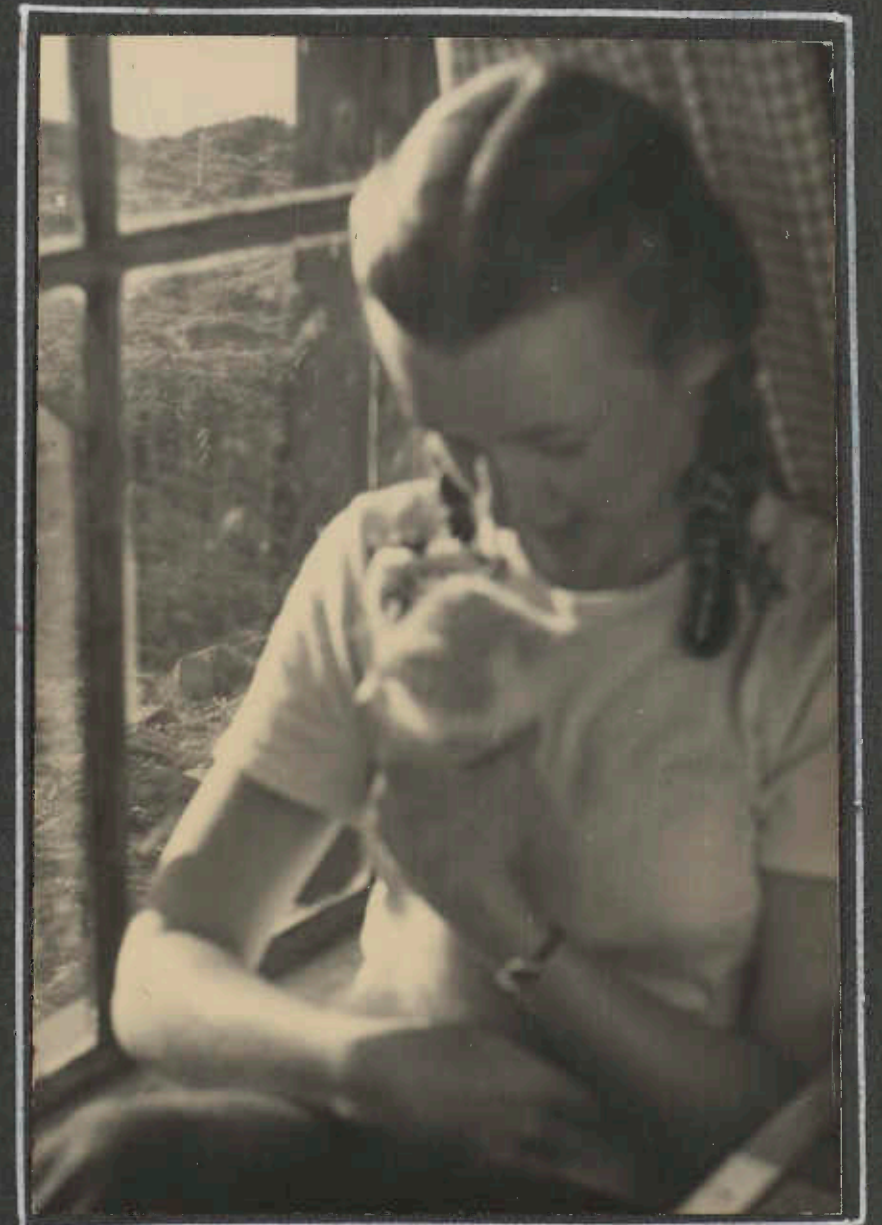
OOH

IS IT ANY WONDER THAT ALLAN (OUR ELUSIVE 13TH MEMBER) SURVEYED OUR ARRIVAL AT MADISON WITH THIS EXPRESSION?



OOH

DOES THE SIGN OUTSIDE OF MADISON HAVE ANY SIGNIFICANCE?



OOH

BEA HEARD AND MADISON'S KITTEN ENTERTAIN EACH OTHER

PRESIDENTIALS TRIP - AUGUST 1944



LEADER GETS PRETTIED UP TO POSE FOR HIS "PITCHER." HE MAY BE ON THE TRAIL, BUT HE WONT GET FAR IN SLIPPERS!



THIS IS PROBABLY OUR "HIGH" IN DISREPUTABILITY -



ESTELLE NAVIGATES PART OF THE "SUBWAY" IN KING RAVINE



THE LOCALE IS THE BOTTOM OF KING RAVINE WHERE WE FIND BLUEBERRIES -



AND MORE BLUEBERRIES -

THE MCM IN THE PRESIDENTIALS - AUGUST 1944



DOT AND JOE WAIT FOR OUR ARRIVAL AT THE TOP - AT THE HEADWALL. MT. MADISON IS THE PEAK

GW



AND HERE WE COME - SCRAMBLING UP THE HEADWALL



LUNCH ALONG GULFSIDE TRAIL - WHICH HIS EMINENCE, MR. HEARD, ENJOYS NO END.

GW



A VIEW OF WASHINGTON AND THE GREAT GULF

WH



MADISON AND THE LAKE

WH

10

IN THE PRESIDENTIALS
AUGUST 1944



NOT MUCH FARTHER TO THE SUMMIT OF ADAMS ^{GW}



THE LAST DAYS' HIKING. CLOUDS IN THE VALLEY
BELOW THE MADISON HUT - ON OUR WAY UP MT. MADISON ^{GW}



FROM THE SUMMIT OF MADISON - CLOUDS IN
THE VALLEY AT THE FOOT OF THE PILOT
AND PLINY RANGES. JUST TO THE
LEFT OF THIS PICTURE, MT. MANSFIELD,
75 MILES AWAY, WAS VISIBLE ^{WH}



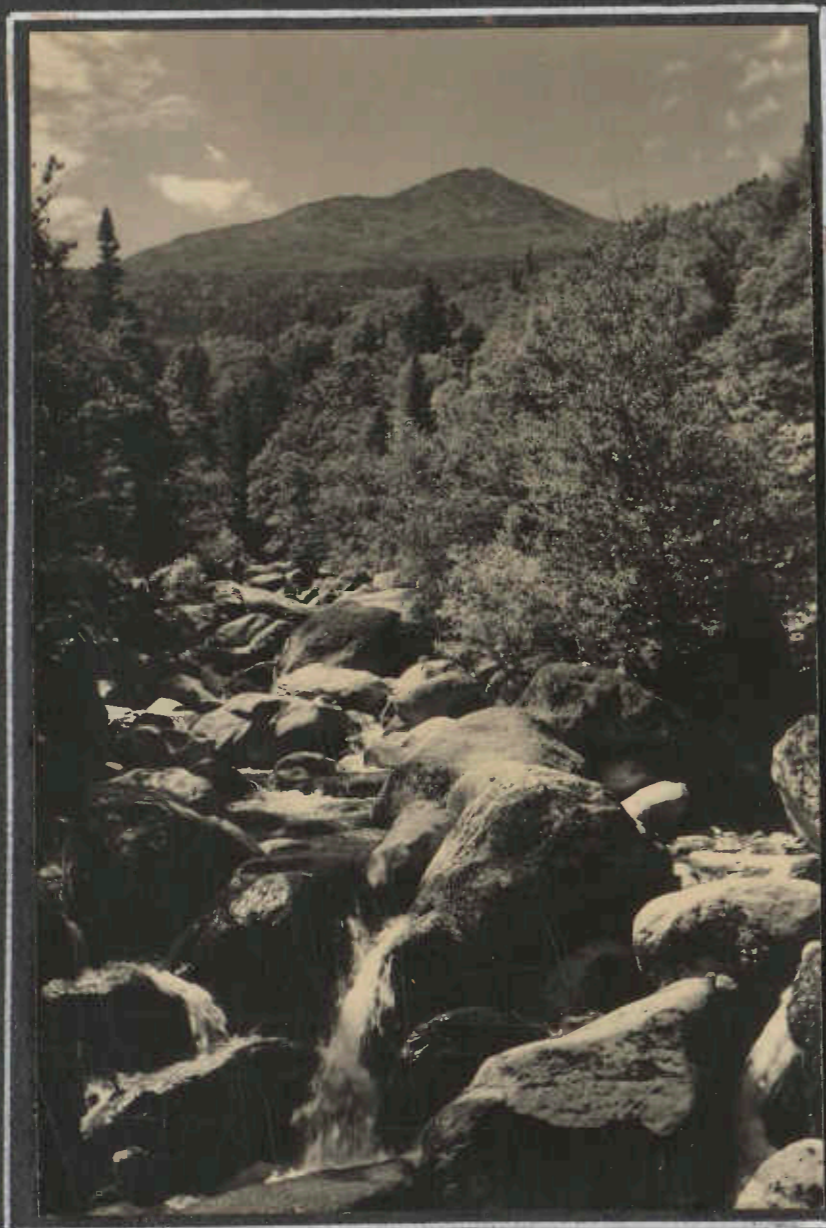
STILL 'PANNING' FROM MADISON. THE PEABODY RIVER VALLEY
LEADS TO GORHAM WITH ITS DAM ON THE ANDROSCOGGIN.
THE MAHOOSUCS BEYOND, AND THE MORIAMS ON THE RIGHT. ^{WH}

THE "V" OF CARTER NOTCH
ACROSS THE GLEN FROM
MT. MADISON. THE OSGOOD
RIDGE OF MADISON, OUR
HIKE ROUTE, IN THE FOREGROUND.



^{WH}

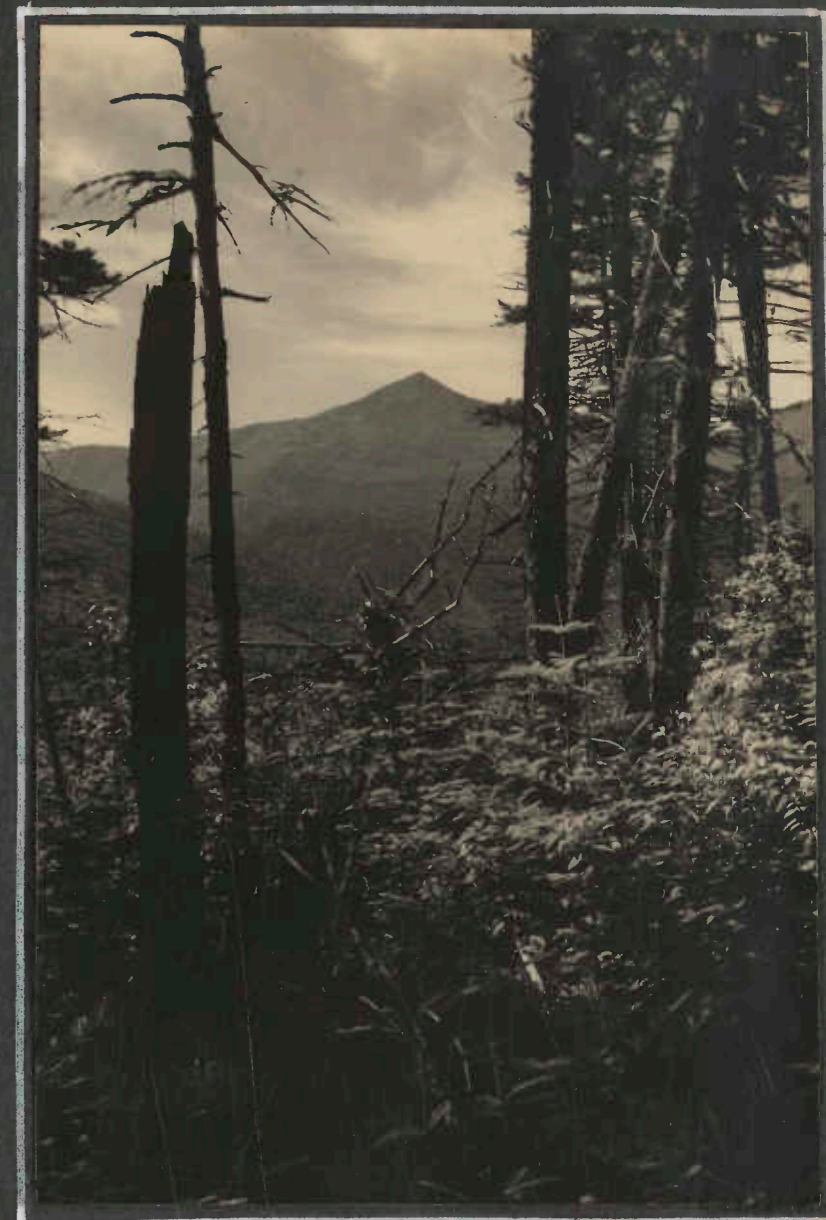
THE MCM IN THE PRESIDENTIALS -
AUGUST 1944



MT. ADAMS LOOMS ABOVE THE
PEABODY RIVER AS WE CROSS
THE GREAT GULF.



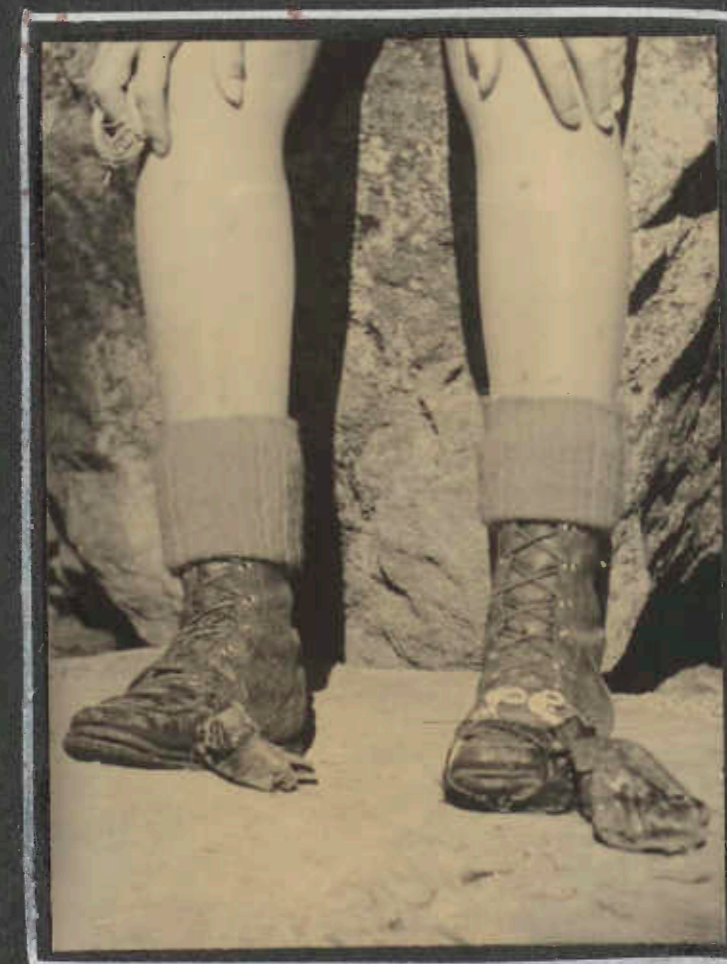
ESTELLE AND DOT (WITH THE FRIARTUCK EFFECT)
TAKE A LOOK BACK AT MT. ADAMS AND
THE GREAT GULF



AND ADAMS RECEDES STILL FARTHER AS
WE GET OUR LAST VISTAS FROM THE MADISON
GULF TRAIL ON THE WAY OUT TO PINKHAM NOTCH.



A LAST VIEW - NELSON CRAG ON MT. WASHINGTON
FROM THE GLEN ON OUR WAY TO GORHAM STATION



FINALE - THE ROCKS ARE TOUGH ON SHOES!
THESE ARE ESTELLE'S. BUT FOUR OTHER
PAIRS WERE ALMOST AS BAD!

111

12

PEN-MAR TO SMITHSBURG - OCTOBER 8, 1944



HIGH ROCK - APPALACHIAN TRAIL - SIGN'S PROHIBITION OBSERVED! WRR



HIKING ALONG --- OOH

THURMONT - THE CATOCTINS
OCTOBER 29TH



ALICE KIDS ALONG WHILE MAMA GOAT, AT
END OF ROPE, EYES THE PHOTOGRAPHER WRR



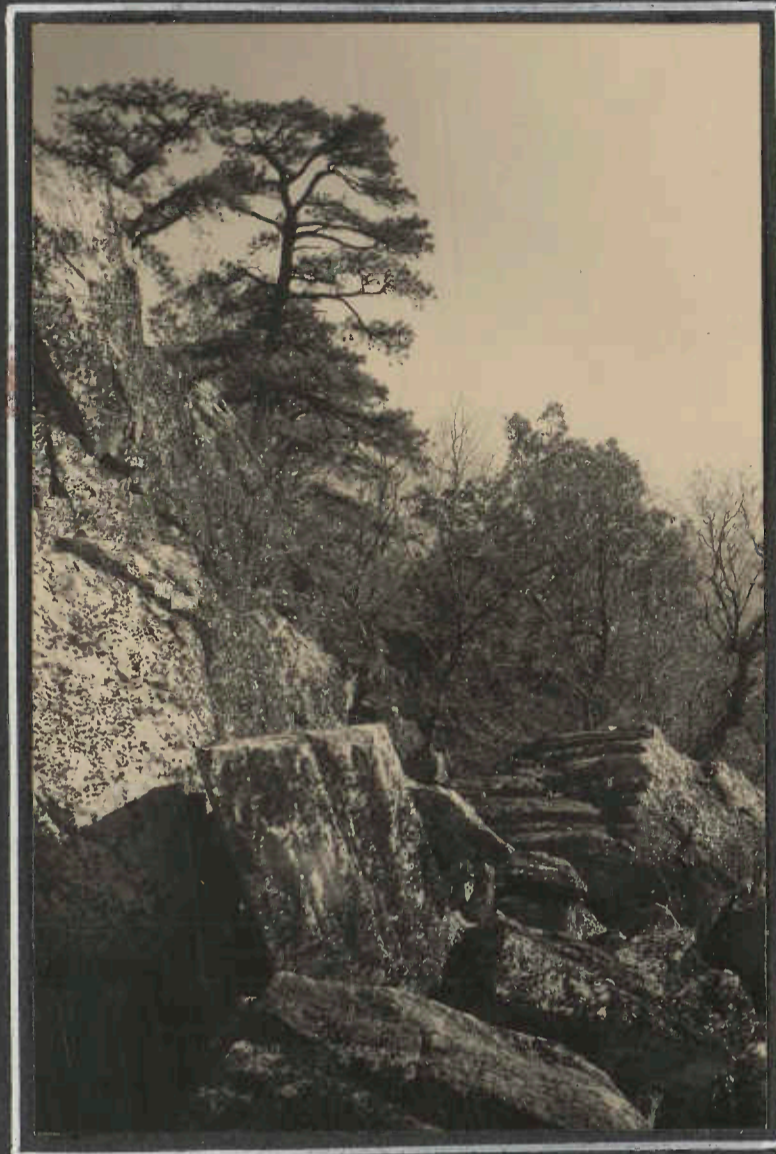
ON THE ROAD NEAR SMITHSBURG - HIGH ROCK
PROMINENT AT LEFT, BUZZARD KNOB AT RIGHT WRR



WINSLOW THOUGHT HE WAS CHASING THE MOUNTAIN CLUB
ALONG THIS RIDGE, BUT THEY NEVER CAUGHT UP WITH HIM! WH

BOB'S HILL - IN THE CATOCTINS

OCTOBER 29, 1944



BLACK ROCKS - WITHOUT THE HIKERS THAT WINSLOW EXPECTED TO SEE

WH



SHERIFF KENNEDY BRINGS THEM IN!

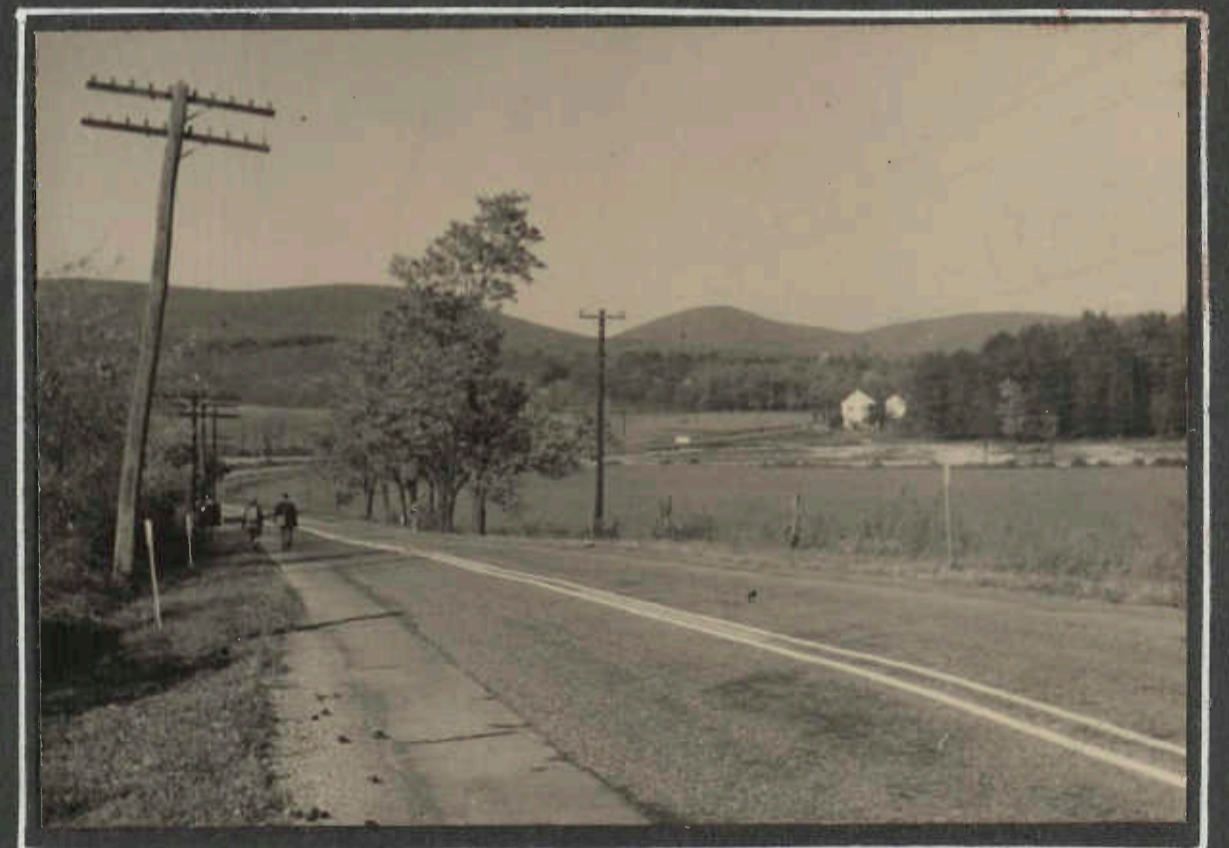
WRR

WINSLOW HARTFORD, ALICE ROESSLER, DR. AJELLO, OS HEARD (WEARING HAT) HARRY COX, WALTER RHEINHEIMER, MILDRED HURT, VIOLA BUELL (COY) MORGAN BARR, AND, OF COURSE - ALEC KENNEDY. OH YES - THE THREE ON B DECK - RUTH LENDERKING, ZAN LEVIN, DICK ROESSLER



CATOCTIN'S RIDGE IS JUST AHEAD - THURMONT

WRR



EAGLE MOUNTAIN, ROUND TOP, CARRICK KNOB FROM HIGHWAY 15

WRR

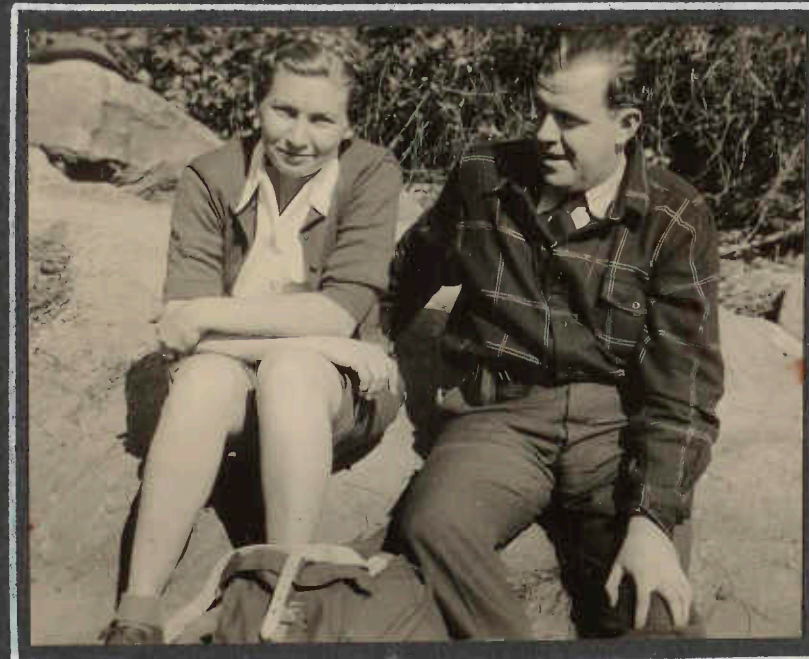
TOWSON TO COCKEYSVILLE - OCTOBER 22ND



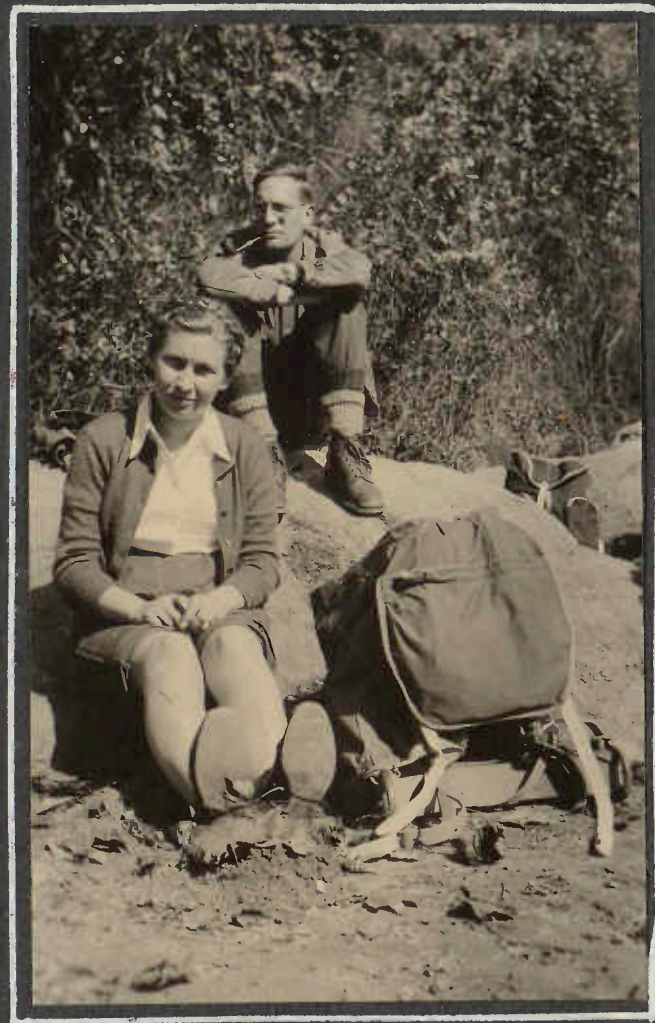
THERE ARE TIMES IN THE MOUNTAIN CLUB WHEN ONE -OR EVEN A WHOLE ROW, IS ON THE FENCE



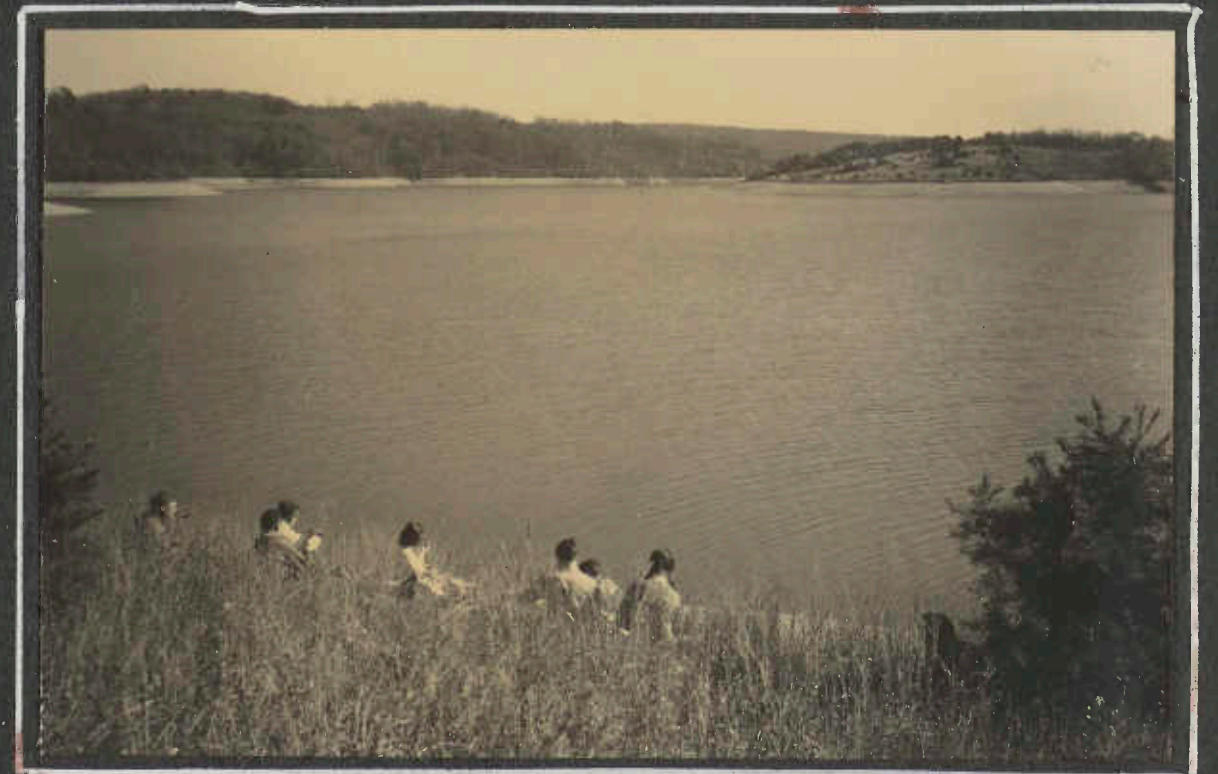
THERE ARE SOME THINGS ABOUT THIS SORT OF SUGGESTING MAYBE IT WAS THE LUNCH PICTURE



MARRIED COUPLES DO EVENTUALLY GET BACK ON CLUB HIKE !



NOW, JUST HOW DID MORGAN GET INTO THIS PICTURE ?



THIS PICTURE - AT PRETTYBOY LAKE - IS THE ONLY PHOTOGRAPHIC EVIDENCE WE HAVE OF THE HAMPSTEAD TO PARKTON HIKE OF NOVEMBER 12TH

CAMP RITCHIE- DEVIL'S
RACE COURSE- PEN-MAR
NOV. 26, 1944



NEW RACECOURSE. -
SAME OLD ~~DEVIL~~ HIKER



THIS IS THE "DEVIL'S RACECOURSE" SHOWN ON THE MAP,
ABOUT A MILE NORTH OF OUR OLD STAND BY THE LEANTO.



ON THE RUINS OF THE HIGH ROCK PAVILION



THE VIEW FROM QUIRAUK

CAMP RITCHIE, THE SANITARIUM, RAVEN ROCKS MOUNTAIN,
JACKS MOUNTAIN, BLUE RIDGE SUMMIT - EXCELLENT VIEW

TENTH ANNIVERSARY CELEBRATION

DECEMBER 7, 1944



"THE PRESIDENTS"

MARY HEARD, ALEC KENNEDY, ORVILLE CROWDER -
NOTE THE HALO, FRED WARD, MORGAN BARR

THE PICTURE ALBUMS OF
"YESTERYEAR" COMPETE
WITH THE REFRESHMENTS



THE REFRESHMENTS COMMITTEE --
CHECKS AS TO THE NUMBER OF CANDLES ON THE
CAKE. MARY HEARD, ALICE KAESTNER, HARRIET CASPARI.



PERRY HALL TO CARNEY

DECEMBER 10, 1944



EVEN WITH FARMER OLIVER ISAAC'S GUIDANCE R.C.
LEON LERNER DOESN'T QUALIFY AS A
TRACTOR. GUEST ELIZABETH IS AMUSED



YEP, IT'S THE LUNCH PICTURE -- LEON IS HUNGRILY EYEING THE CAMERMAN'S BIRDIE -- Eric Tognu



THE GUNPOWDER RIVER RC



AN ENTIRELY DIFFERENT ANGLE ON THE TRADITIONAL LUNCH PICTURE Ray Costa



FOLLOWING THE REAR GUARD RC

RANDALLSTOWN - ELLICOTT CITY
JANUARY 14 TH



UNION DAM, THE
MILL RACE, AND
THE HIGHWAY
BRIDGE (BYPASS 40)



LUNCH, OF COURSE

M. KREBS

THE HILLS OF GLEN ROCK
MARCH 4 TH



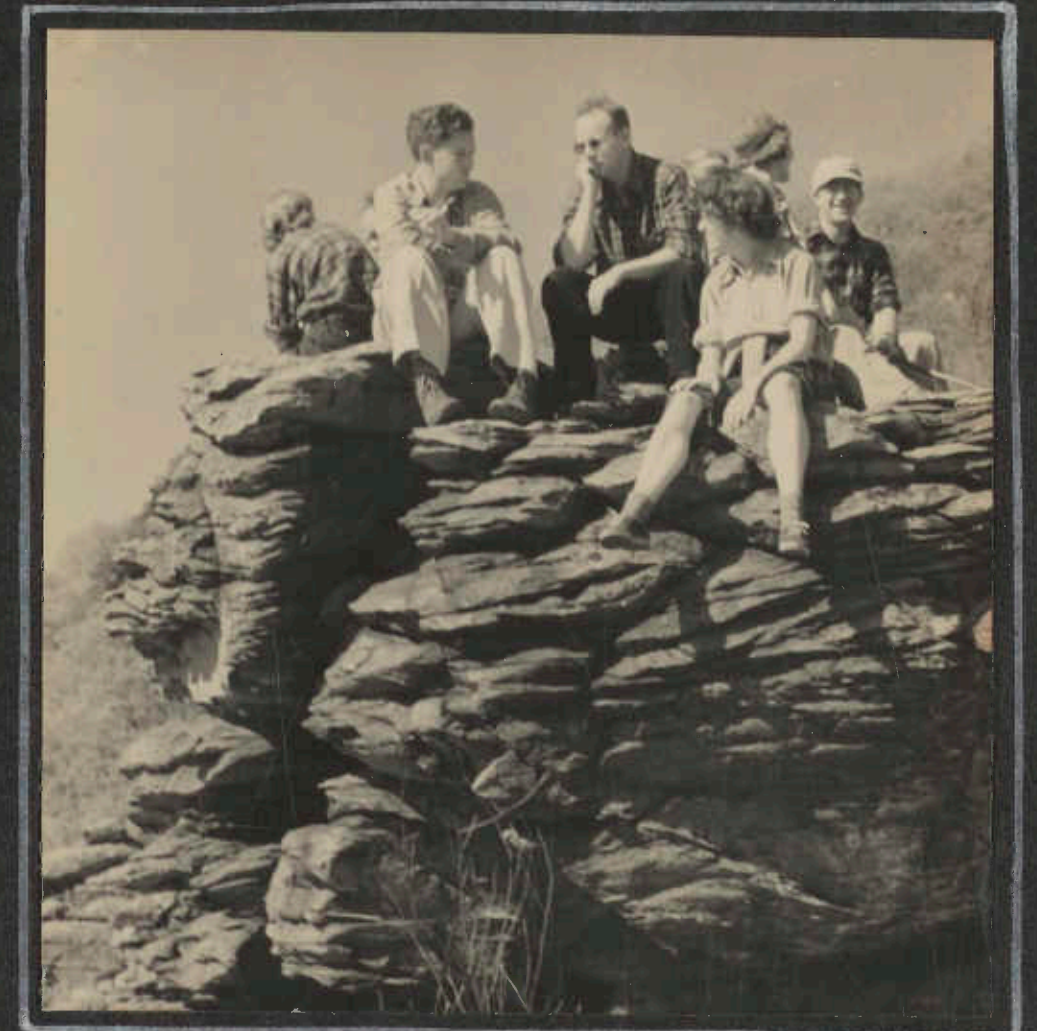
W.M.

ON HUNTRICK HILL, KREBS VALLEY BELOW.
SAUBEL HILL AND DUG RIDGE IN DISTANCE.

1945

THE YEAR OF
THE GREAT
FILM FAMINE

ELK RIDGE - HARPERS FERRY
APRIL 8 TH



WINSLOW OBVIOUSLY DIDN'T GET THAT LAST BIT OF
HAWAIIAN THAT DAVE TRIED ON THE GANG.
NEITHER DID HARRY COX, BUT HARRY ISN'T
ADMITTING IT.



DD

ON MARYLAND HEIGHTS

DAVE PRUDDEN, HARRY COX, WINSLOW HARTFORD, POLLY
JONES, WALTER RHEINHEIMER, HOWARD DONATT,
DIK ROESSLER, MORGAN BARR, DOROTHY WATSON.

ELK RIDGE-HARPERS FERRY- APRIL 8, 1945



ON MARYLAND HEIGHTS - THE RIVER AT THE UPPER LEFT IS THE SHENANDOAH. THE POTOMAC IS "IMMEDIATELY BELOW THE ROCKS - THE BRIDGES ACROSS IT INTO HARPERS FERRY ARE VISIBLE IN THE PICTURE"



POTOMAC RIVER AT HARPERS FERRY

D. DONATT

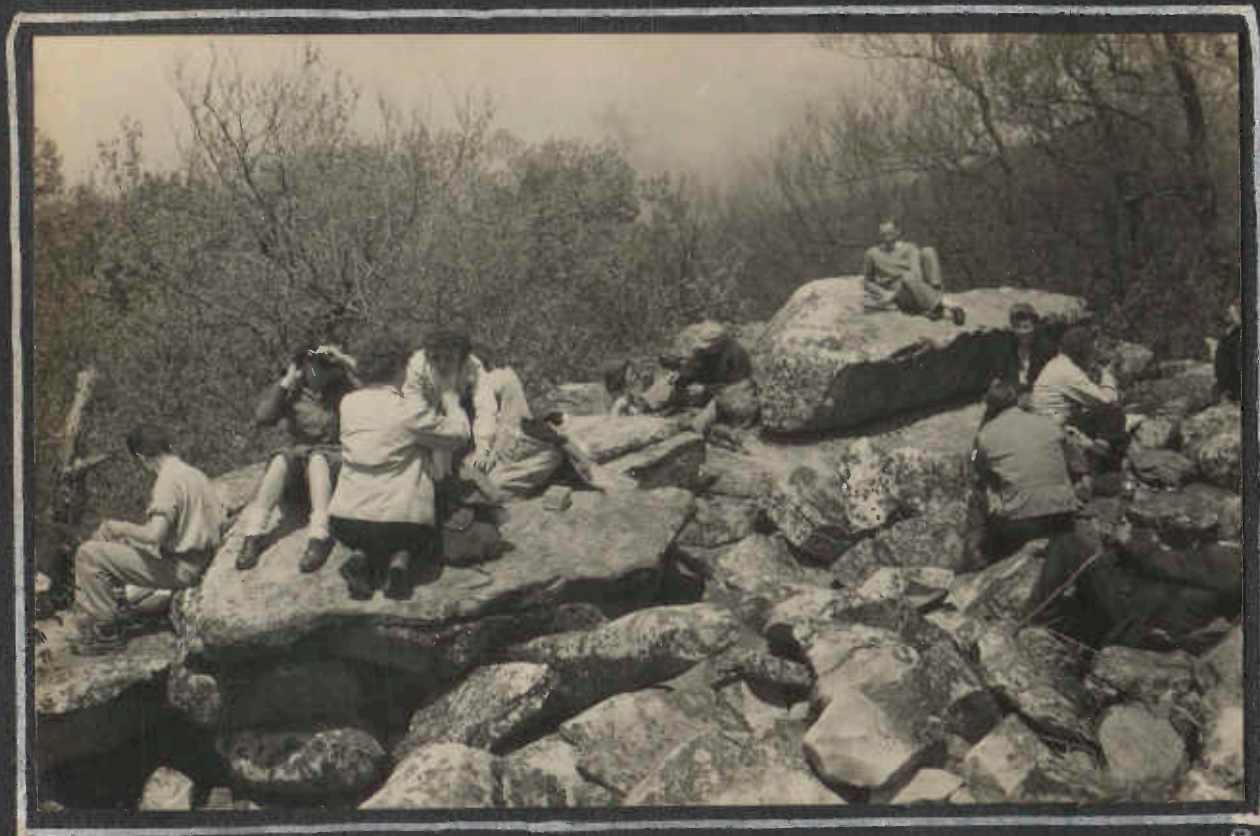
DEVILS RACECOURSE LEAN-TO



OS, DOROTHY, ELOISE, AND MORGAN WERE THE "OVERNIGHT GROUP" ON ONE OF OUR WARTIME SOUTH MOUNTAIN TRIPS OFF THE "WESTERN MARYLAND" BUT WE DO NOT KNOW NOW WHETHER THESE PICTURES ARE FROM OCTOBER 1944, OR FROM ON THE SMITHSBURG MIKE PICTURED ON NEXT PAGE.

00H

APPALACHIAN TRAIL HIKE
EDGEMONT - SMITHSBURG, APRIL 29, 1945



LUNCH STOP WAS ON BUZZARD KNOB



ALLAN RHODE IS CHECKING THE TURN IN THE TRAIL
WITH WINSLOW. PARTY SEEMS GETTING ON THE MOVE.



PLENTY OF ROOM AT PRECARIOUS ANGLES



AT THE WOLFE LEAN-TO



THE ALL-INCLUSIVE EASTMAN
LENS GOES FOR GRACIE.



EDGEMONT-
SMITHSBURG
HIKE
APRIL 29, 1945



WAITING FOR THE
TRAIN AT THE
SMITHSBURG STATION



NO - THE WESTERN MARYLAND
DOES NOT RUN PULLMANS --- BUT --



GOING TO GET A RIDE HOME



NOT AS BRIGHT AS ON THE TRAIL



THE MEM'S WARTIME WAY TO THE
MOUNTAINS

PICTURES - George Wilcox

RAVEN ROCKS MOUNTAIN - BLUE RIDGE SUMMIT

JUNE 24, 1945



FROM SANITARIUM STATION INTO THE HOLLOW



PHOTOGRAPHIC EVIDENCE - OS AT A CHURCH DOOR



A PICNIC GROVE FOR THE LUNCH SPOT



VIEW WEST - FROM RAVEN ROCKS MOUNTAIN -



COMING UP HAYCOCK HILL - JACKS MOUNTAIN AND RAVEN ROCKS MOUNTAIN BACKGROUND. NO EVIDENCE HERE OF THE MAD DASH FOR TRAIN A BIT LATER



DEERFIELD TO
EDGEMONT

SEPT. 23, 1945

A RAINY SUNDAY TRIP ON
THE WESTERN MARYLAND.
LEFT TRAIN AT DEERFIELD,
HIKED ACROSS CATOCTIN
MOUNTAIN, TO THE CATOCTIN
LINK TRAIL, TO DEVIL'S RACE-
COURSE LEANTO, THEN RAVEN
ROCK HOLLOW, ON THE A-T
OVER BUZZARD KNOBS IN HEAVY
RAIN, AND OUT WARNER
GAP HOLLOW TO THE RAIL-
ROAD AT EDGEMONT

THE RETURN TO THE
PAW-PAW SHELTER

OCTOBER 20-21, 1945

WITH "TRANSPORTATION" AGAIN
AVAILABLE THE WEEK-END
TRIP DREW AN ATTENDANCE
REQUIRING THE BUSES AND
TWO CARS.



READY TO BOARD THE BUS ON NORTH AVE.

RM



RAIN PERMITTED PHOTOGRAPHY ONLY AT END OF HIKE

R



THE SHELTER, IN THE GREEN RIDGE FOREST
DETAIL BETWEEN THE TWO PICTURES - ELIMINATED!

RM

PAW-PAW SHELTER TRIP - OCTOBER 20-21.



THIS HAS TO DO WITH BEAN-HOLE BEANS.

RM



DOROTHY WATSON, CHIEF COOK, ORGANIZES THE PARADE - THE BEANS MUST BE PARADED!

RM



CHARLIE BRACKEN AND OLIVER ISAAC CHEERFULLY LEAD OFF WITH THE FOOD



QUARTETTES WILL FORM!

RM

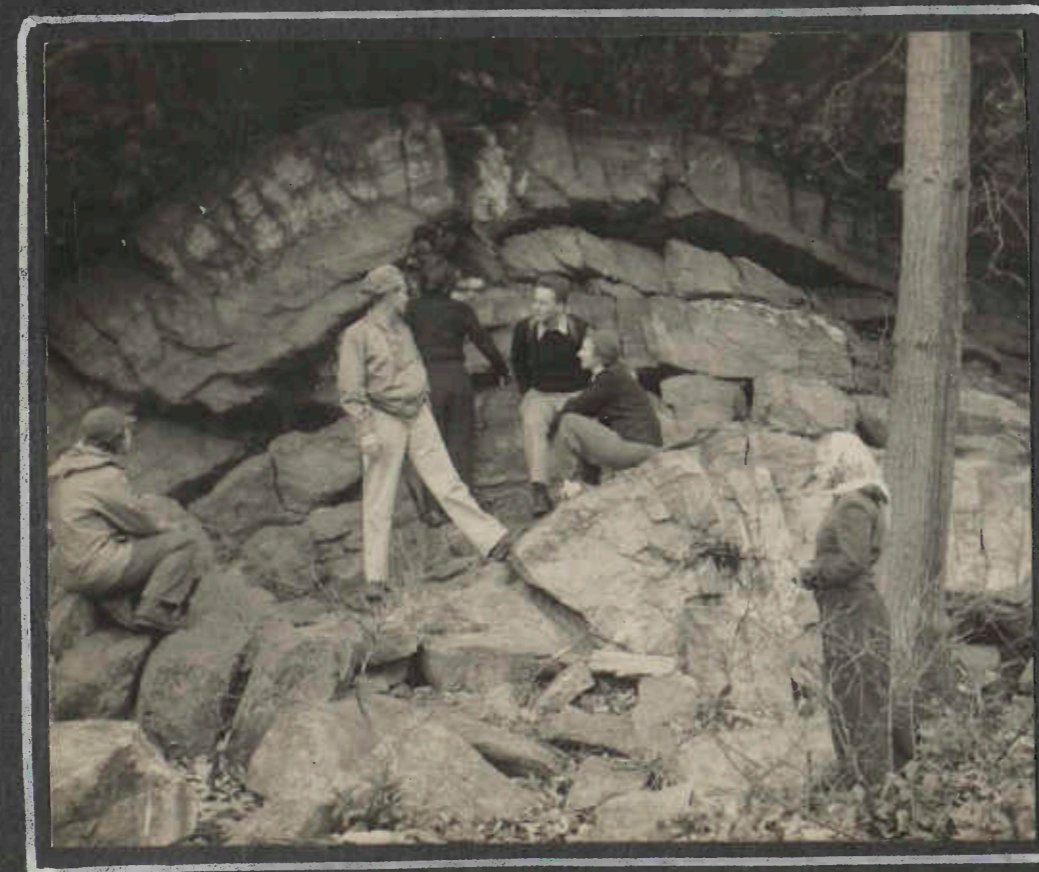


THIS PROCESSION WAS THE BEGINNING OF THE HIKE

RM

GEORGE RUSSELL, ROBERT MACHIN, OLIVER ISAAC, AND ALEC KENNEDY GET POISED TO SING - OR ARE THEY MERELY GOING TO TAKE UP THE TOWN HILL-PAW PAW QUESTION?

SNICKERS GAP - NOVEMBER 4, 1945



THE CAN-READ-A-MAP SQUAD HAS AGREED; IT IS THE SHENANDOAH RIVER. NOW HOW DID WE GET HERE, ANYHOW!

CRESCENT ROCK CAVE - THE ENTIRE CLIFF IS CALLED CRESCENT ROCK AND ENDS IN A GEOLOGICAL FOLD, MAKING A PERFECT CRESCENT ROCK. ---- CRESCENT ROCK CAVE WHERE THE SEMI-CIRCULAR FOLD OF ROCK STRATA IS VERY APPARENT ---- THE CORE OF THE FOLD HAS BEEN BROKEN OUT BY THE ACTION OF ICE IN THE CREVICES, FORMING A SHALLOW CAVE ABOUT SIX FEET DEEP. (INFORMATION FROM "GUIDE TO PATHS IN THE BLUE RIDGE")



OUT OF THE WOODS, WEST OF THE RIDGE, SNICKERS GAP AT CENTER; PEAK AT RIGHT, SOUTH, IS PROBABLY MT. WEATHER, SOME MILES ALONG THE A-T.

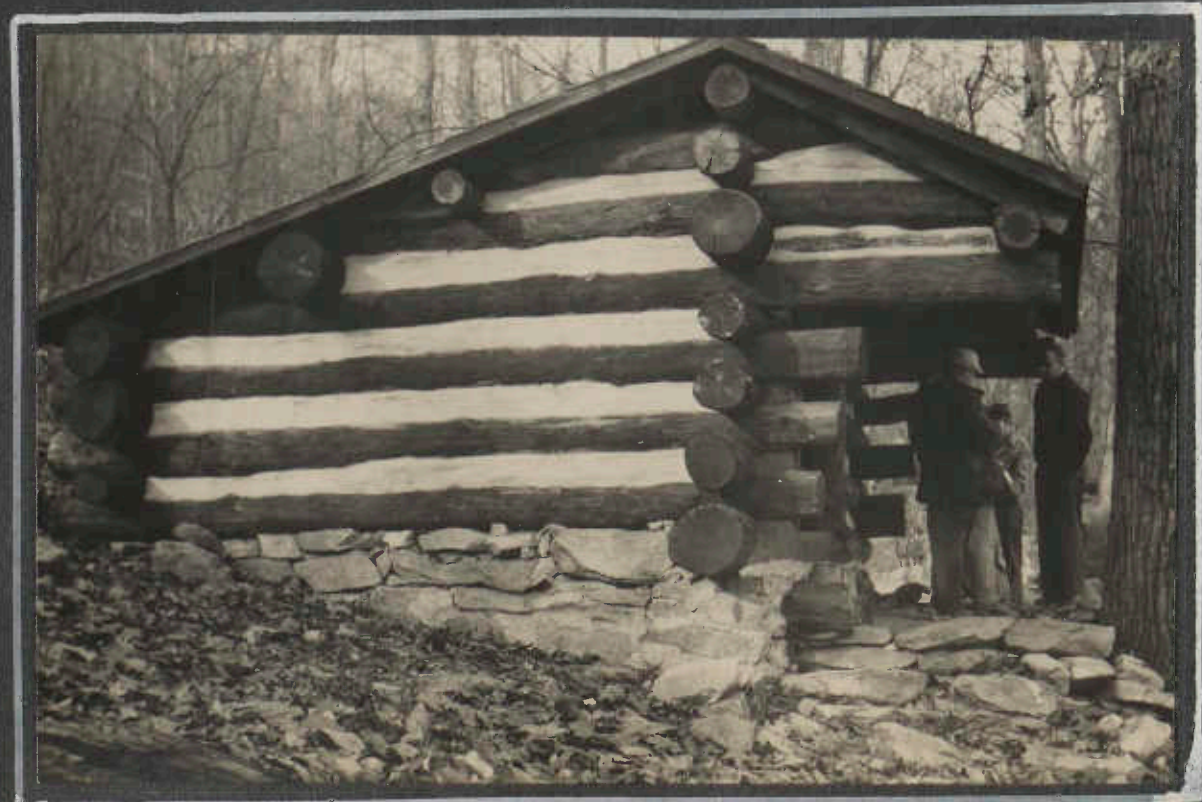


TURNERS GAP
TO WEVERTON
DECEMBER 2, 1945
APPALACHIAN TRAIL
HIKE

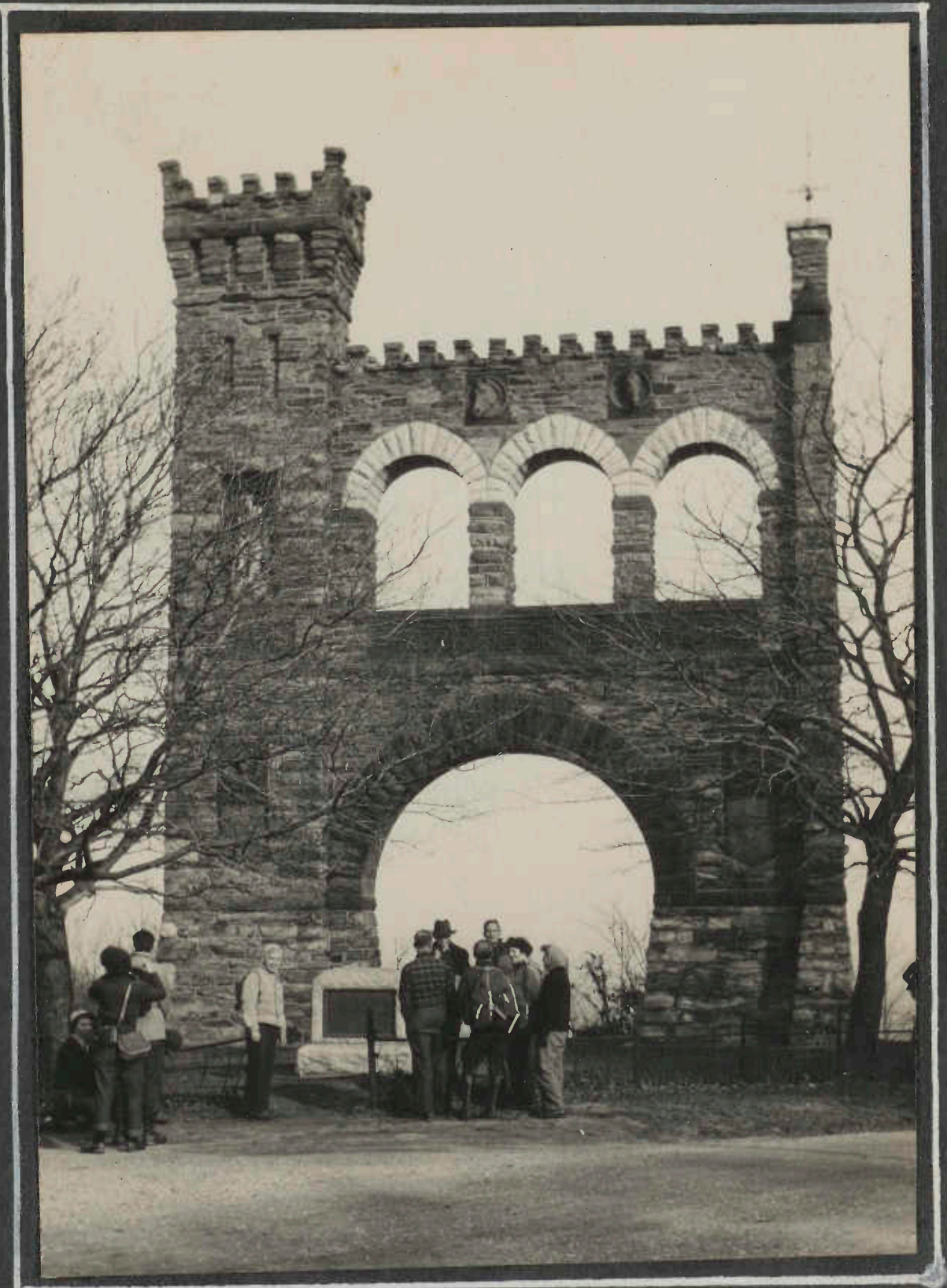
AT THE FIRE
TOWER ON
LAMB'S KNOLL



WE CAN'T UNDERSTAND WHY WINSLOW, QUITE TAME IN THE UPPER
PICTURE, TAKES TO THE TOWER ON THE NEXT ONE. NOTE
THAT FRANK CALAFIORE IS BACK FROM THE WARS.



CRAMPTON GAP LEAN-TO



THE MEMORIAL ARCH IN CRAMPTON GAP



THE YEARS' PICTURES END WITH ONE OF THE RUINS!