

MOUNTAIN CLUB
OF MARYLAND

1943

BY THE "PHOTOGRAPHIC GROUP"
COMPLETED MAY, 1945

ELLICOTT CITY TO RANDALLSTOWN
 JANUARY 10, 1943



IT WAS NECESSARY TO GO THROUGH THIS --ER-- PIPE TO GET INTO THE VALLEY. AT LEFT PEASANT FROM GRAUSTARK - OR WAS IT MOLDAVIA? - WEARING MCM PACK, DEMONSTRATES HOW IT IS DONE. AT RIGHT, CLUB MEMBER HESITATES BEFORE TRYING (PICTURES BY OS HEARD)



LUNCH - AND THE GUESTS, FELISA BRACKEN AND "KIT" CARSON, STAND. WINNIE, ELOISE, AND OS HEARD, YOU KNOW

WRR



SUCH SKEPTICISM - AND THEY'RE EATING THEIR OWN LUNCHES, TOO! MIKE, WINNIE, VIVIAN, MARY, AND GRACE.

WRR



AH! SMILES NOW - THE DESSERT MUST HAVE BEEN OK.

OSH

ELKOTT CITY --
RANDALLSTOWN
JANUARY 10, 1943



GRACIE

WRR



DAY-DREAMING DICK!

COH



COH



ELOISE SHOULD HAVE HALVED THAT APPLE FIRST!

COH



FIRST TRIP OF THE YEAR - AND IN THE GRAVEYARD!

WRR

FOYS HILL - PRINCIPIO FURNACE - PERRYVILLE
JANUARY 24, 1943



WRR



THE TOWER AND THE SIGN - IN ORDER VISITED

OOH



LEWIS LATANE', LOOKOUT PROTEM

OOH



'43

SIGN OF THE TIMES - ON THE PHILADELPHIA ROAD - U.S. 40 - COMPLETE ABSENCE OF SUNDAY DRIVERS

OOH



ICE CRYSTALS

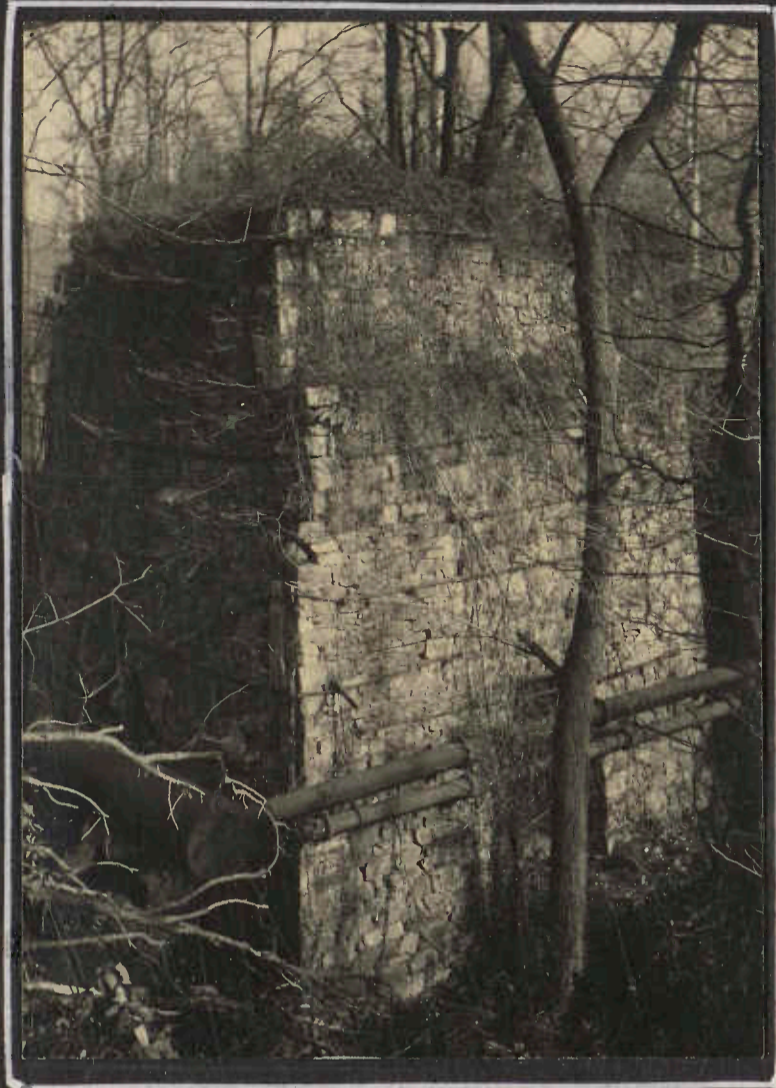
OOH



CHOOCHOO IN THE VALLEY

OOH

PRINCIPIO FURNACE - JANUARY 1943



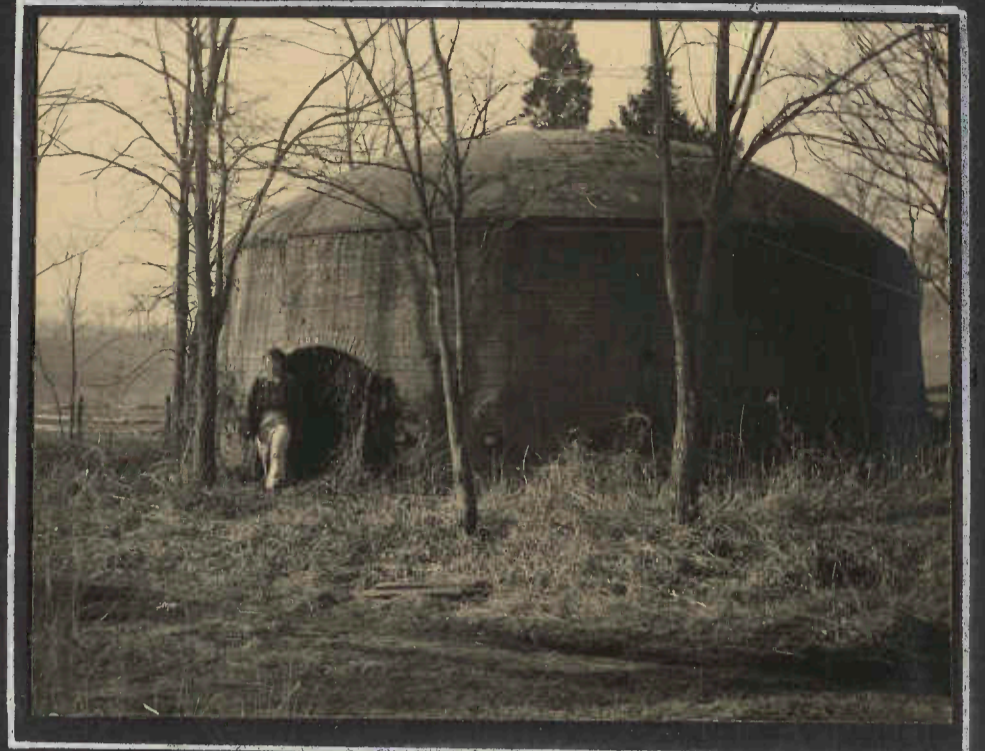
FURNACE STILL STANDS

WH



THE SIGN TELLS THE STORY

00H



BRICK CHARCOAL HEARTH - OF LATER VINTAGE THAN THE FURNACE -

WH



WRR



ICE IN THE STREAM

WRR

THE GROUP - ALICE BROWN, RUTH LENDERKING, FELISA BRACKEN, "KIT" CARSON, ELOISE COCHEL, WINSLOW HARTFORD, TED DANFORTH, OS HEARD, LEWIS LATANE, MORGAN BARR --

GLYNDON TO COCKEYSVILLE - FEBRUARY 14, 1943



MUST HAVE BEEN ON THE SUNNY SIDE OF THE HILL

WRR



STUDYING THE FARM PROBLEM!

WRR



TAKE IT EASY - SHE'S JUST CHANGING FILMS UNDER COVER!

WRR



IT WAS COLD!

WRR



THE "PARKTON LOCAL" IS A BIG FELLOW

WRR



ALL ABOARD!

WRR

NEW FREEDOM TO PARKTON - FEB. 28, 1943



WRR

WELL, WE'LL NAME THEM: WINSLOW HARTFORD, RAY COSTA, ALICE WAGNER, PAULINE FELLMAN, MADELINE FLEMING, ALICE BROWN, MIRIAM COSTA, RUTH LENDERKING, WALTER RHEINHEIMER, OS HEARD, DOROTHY WATSON, MOE FLEMING, GWLADYS HUGHES, MORGAN BARR, LEON LERNER, MERLE HEART.

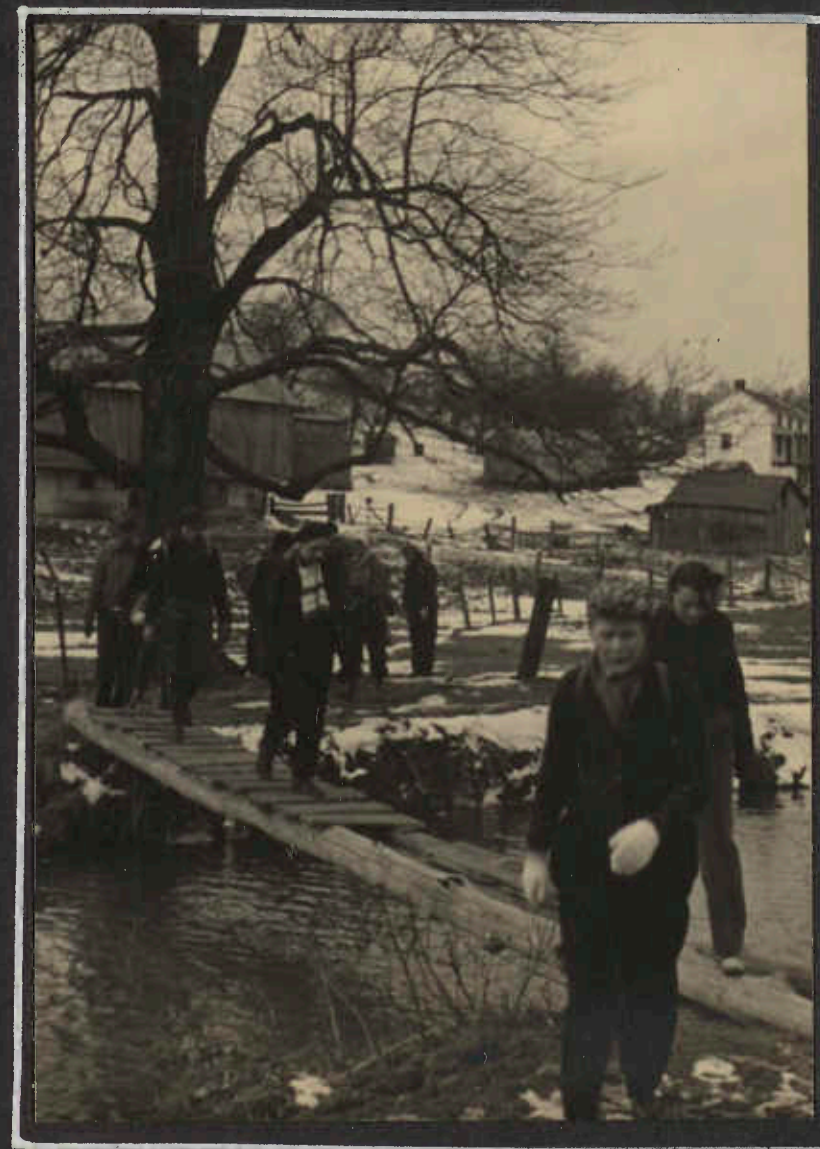


00H

SNOW IN THE PARK



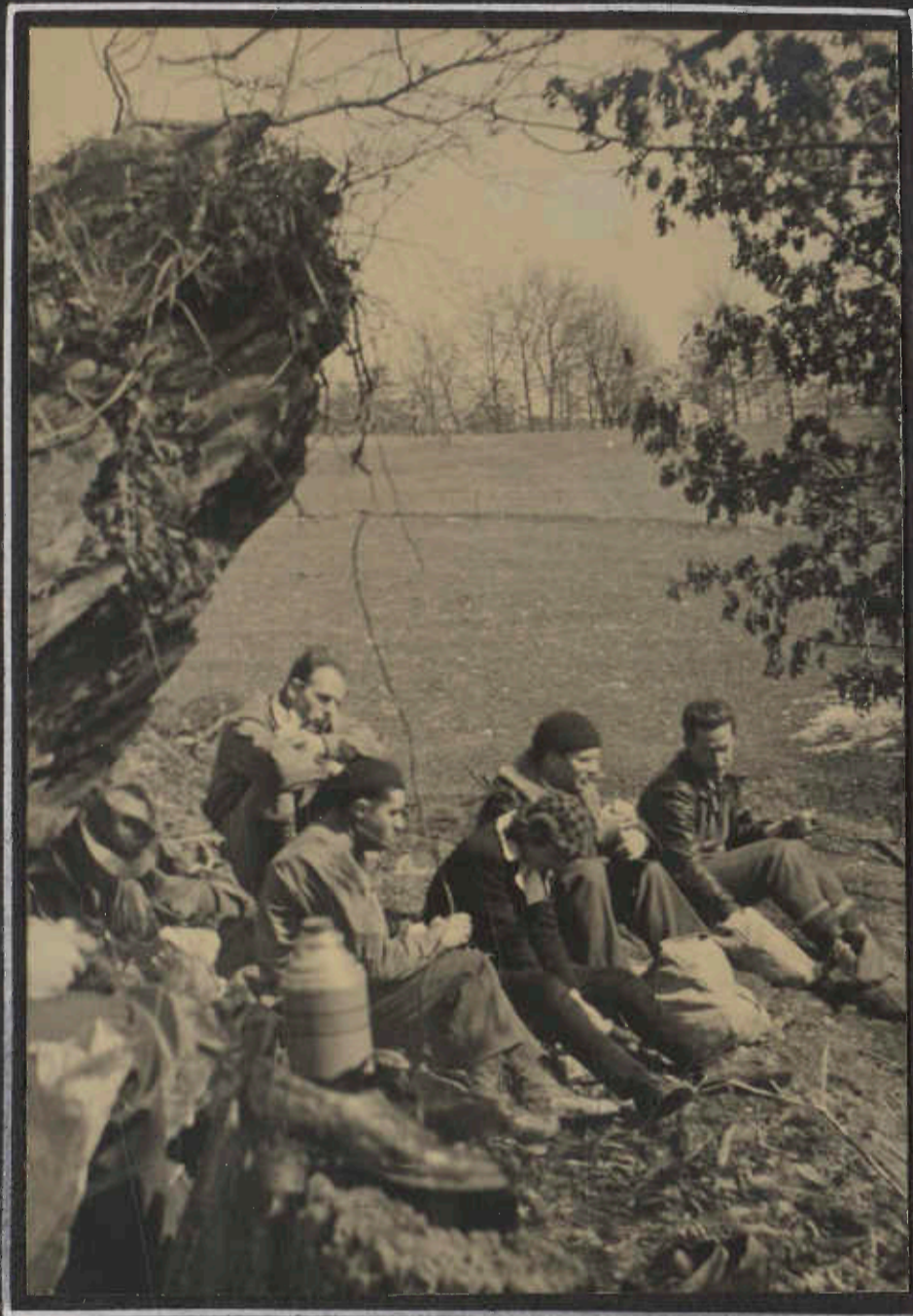
00H



00H

BACK IN FARM COUNTRY

NEW FREEDOM - PARKTON - FEBRUARY 1943



OOH



PICTURING AGAINST THE SKY AS IN THE SHENANDOAH PARK

WRR

"LUNCH"



OOH



OLD MILL DAM - ON LITTLE FALLS OF THE GUNPOWDER

WH

222% flap for cover

PHOENIX TO COCKEYSVILLE —
"THE LONG WAY" MARCH 28, 1943



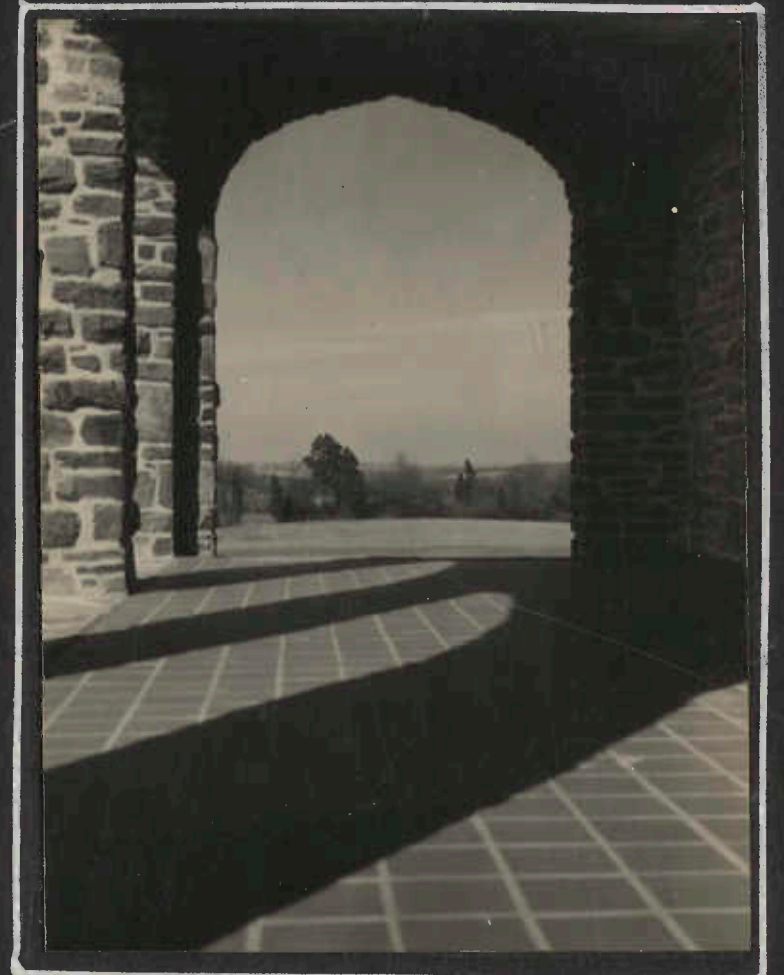
PHOENIX - FROM HILL ABOVE THE RAILROAD

00H



AT THE RIEMAN PLACE

WRR



VIEW WEST

WRR



THEY COME IN ASSORTED SIZES

00H



MUCH TOO EARLY FOR LUNCH

WRR

AVOIDING "ROUND-TOP" IN THE CATOCTINS
APRIL 11, 1943



THE HILLS BETWEEN THE CATOCTINS AND SOUTH MOUNTAIN
ABOVE TO RIGHT: HAYCOCK HILL ↗



JACK'S MOUNTAIN - ERRONEOUSLY IDENTIFIED AS ROUND TOP,
AND RAVEN ROCKS MOUNTAIN - SEEN FROM THE TRACKS



ROUND TOP IN SIGHT AT LAST - SAVED FOR A
LATER DAY - NOTE LEADER OFF TO SIDE!

John Eckard has
page with photo of
Alex Kennedy and Oz Ward -
founders of Sincm (along with
Orville Crowder

SOLDIERS DELIGHT, ETC.
APRIL 18, 1943



"HIKING ALONG"

JHM



WRR

NOTE LEADER LEADING HIKE



WRR

ALEC'S HALO SEEMS TO HAVE
DEVELOPED A HOLLOW RING!



"EXAMINING TERRAIN"

JHM



JHM

SINGLE FILE

IN THE SOLDIERS DELIGHT COUNTRY - APRIL 1943



"LUNCHEON GROUPS"



SOMEONE ASKED FRANCIS IF THE CHICKEN IN THE SANDWICHES HAD BEEN CROSSED WITH A FLOUNDER TO MAKE A "FLATTER" PACKAGE



THERE ARE SMILES



IT MUST HAVE BEEN GOOD!



FURNACE MOUNTAIN - VIRGINIA EXTENSION OF CATOCTIN - POTOMAC RIVER

WRR

POINT OF ROCKS - HARPERS FERRY
MAY 2, 1943



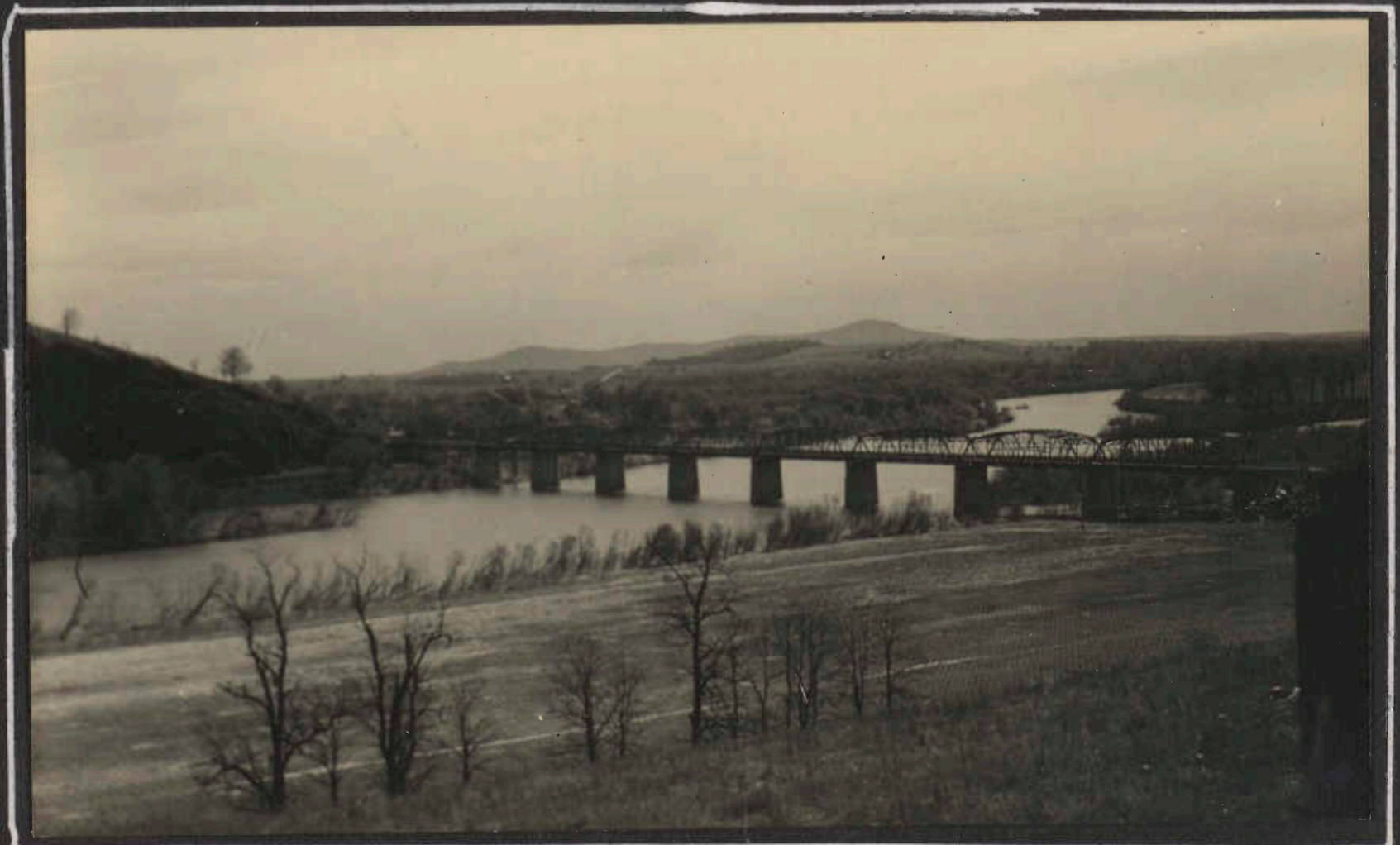
WRR

THE PHOTOGRAPHER WAS FEMININE! WALTER AND HANS RHEINHEIMER, ED AND ESTHER MONKE, DKK ROESSLER, OS HEARD.



"SHORT HIKERS" HEAD FOR THE TRAIN
AT BRUNSWICK TO RIDE TO HARPERS FERRY

WRR



HIGHWAY 15 BRIDGE ACROSS THE POTOMAC ; "SUGAR LOAF" IN DISTANCE

WRR



THE THURMONT TROLLEY
BOBS HILL - IN - THE - CATOCTINS - TRIP
JUNE 13, 1943

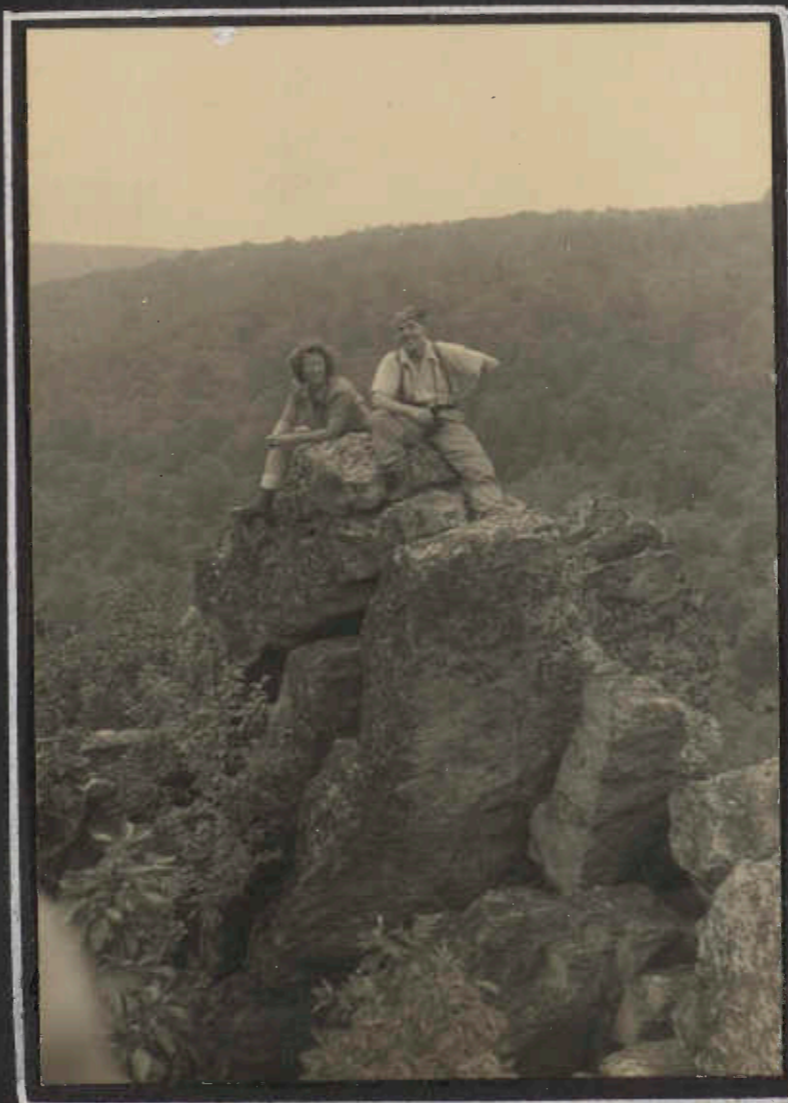
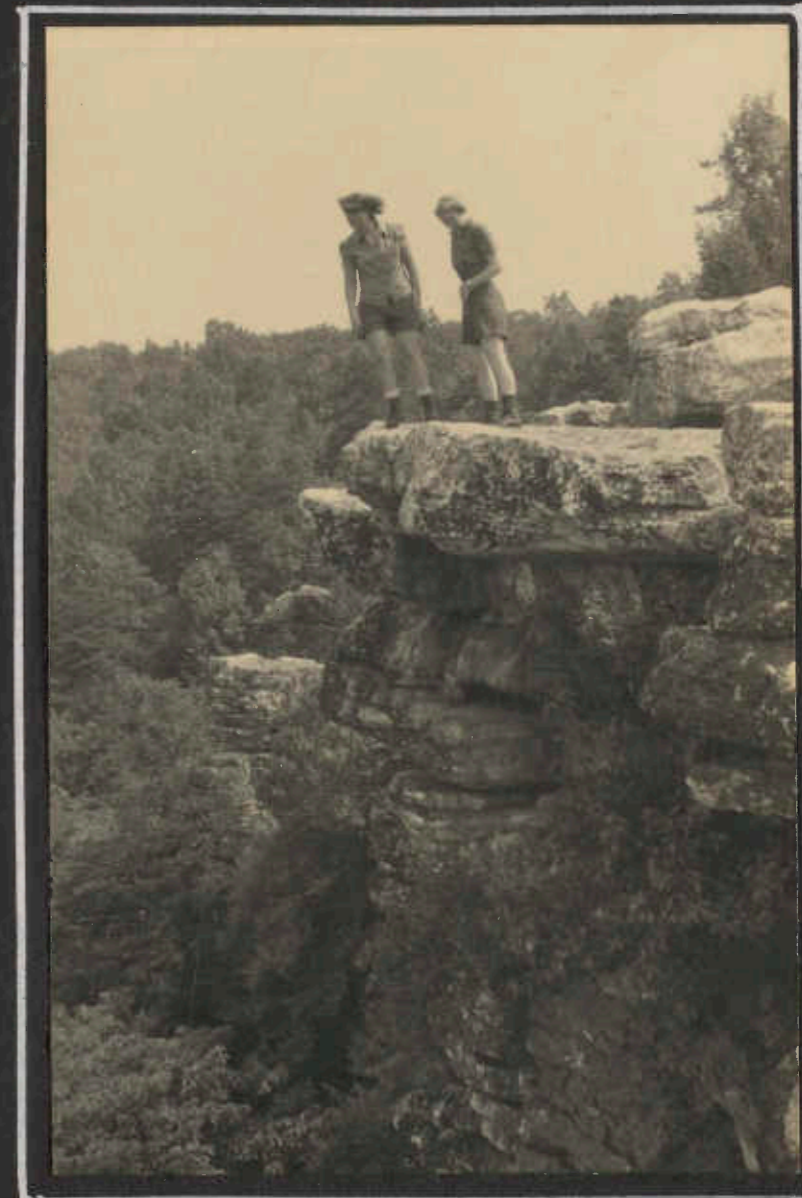
THIS WAS THE TRIP WHERE THE PHOTOGRAPHER "HELPED" THE TRIP LEADER TO THE EXTENT THAT HE LEAD THE WAY OFF THE WRONG SIDE OF THE MOUNTAIN FOUR-AND-A-HALF MILES IN ERROR, BUT HARD BY A "BEER ON ICE" SIGN ON A VERY HOT DAY. RETURN TO THURMONT WAS MADE ON TROLLEY PICTURED ABOVE, AS PLANNED.

4TH OF JULY
PACK TRIP

JULY 3-4-5, 1943

ON THE APPALACHIAN TRAIL FROM PENMAR TO THE PINE KNOB LEAN-TO, THEN TO SMITHSBURG BY WAY OF THE BAGTOWN ROAD, ETC. ETC.

SORRY; IT WASN'T PEN-MAR; BY TRAIN TO EDGE MONT, THEN UP THE MOUNTAIN TO THE TRAIL.



TWO PICTURES ON RAVEN ROCKS - ELOISE, ALICE, AND OS. FIRST NIGHT HAD BEEN AT THE DEVILS RACECOURSE LEAN-TO



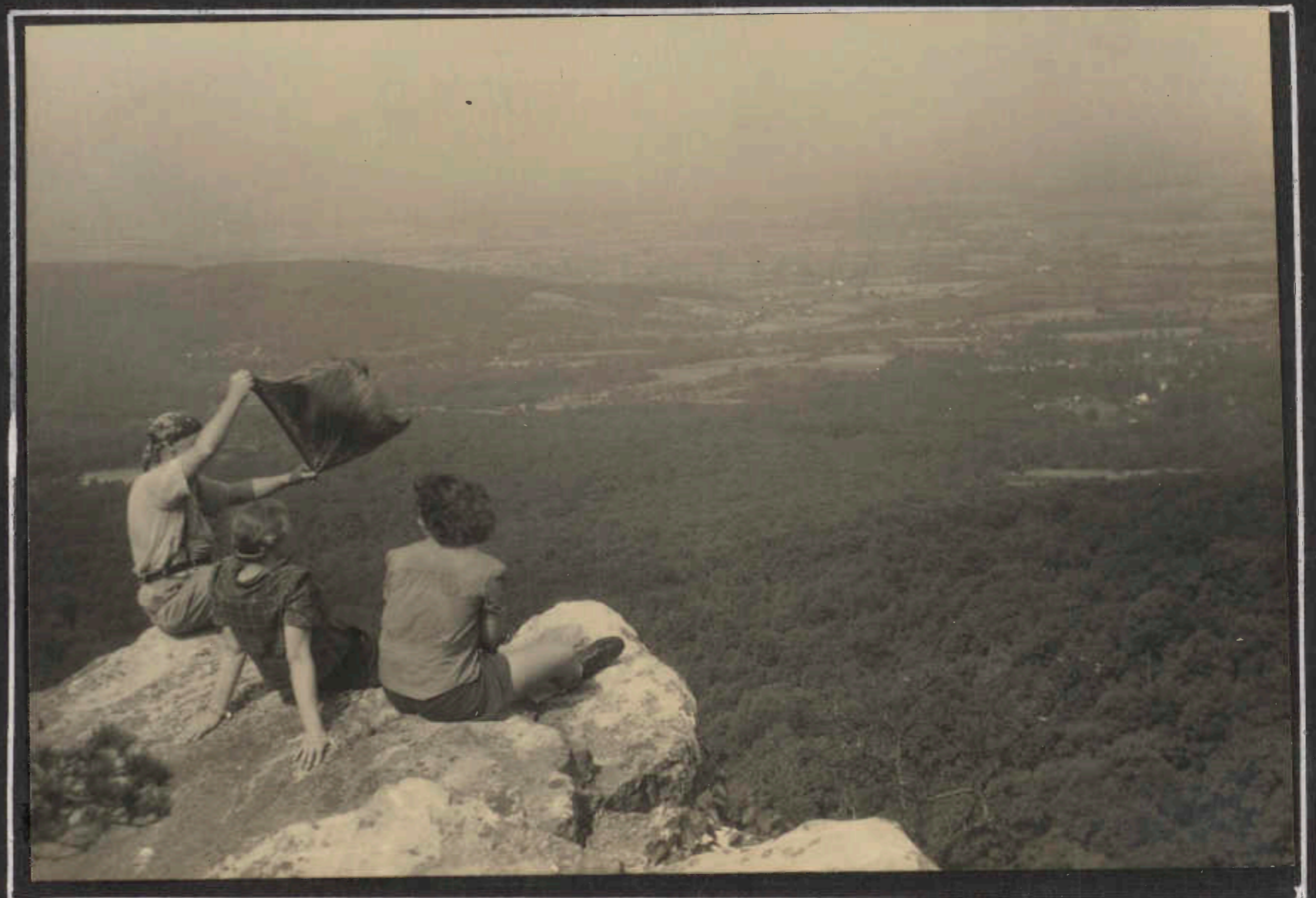
4TH OF JULY PACK TRIP
ON THE APPALACHIAN TRAIL
IN MARYLAND
1943

ON ANNAPOLIS ROCKS
SOUTH ALONG THE RIDGE

WESTWARD ACROSS THE VALLEY



AT THE PINE KNOB LEAN-TO



ALL NIGHT MOONLIGHT - JULY 31- AUGUST 1
DELTA - BRYANSVILLE, PENNSYLVANIA



THE "MA AND PA'S" NO. 62 ROUNDS THE
CURVE INTO THE DEPOT AT
BRYANSVILLE SUNDAY MORNING



HIKERS AT BRYANSVILLE
STATION AWAITING
TRANSPORTATION HOME



LILLIAN AND ELSIE,
IF WE RECALL,
GUESTS OF BEATRICE
HEARD.



NO. 62 HAS NO PULLMANS, BUT
CARRIES SLEEPERS JUST THE
SAME - AS YOU SEE



OLD
SPRING
HOUSE



QUARRY POOL



WATCHING TRAINS AT THE JUNCTION

ooh

PACK TRIP
IN THE SOUTHERN SECTION
OF THE SHENANDOAH
NATIONAL PARK -
AUGUST 10-16, 1943.

ELOISE COCHEL, ELSIE SKIDGELL,
OS HEARD, DICK ROESSLER.
BY TRAIN - B+O TO SHENANDOAH
JUNCTION, NORFOLK AND WESTERN
TO CRIMORA, VIRGINIA.



DICK SPORTED A NEW HAT

ooh



FIRST NIGHT AT THE RIP RAP HOLLOW LEAN-TO.
RIP RAP HOLLOW IS BETWEEN THE BLUE RIDGE PROPER AND
ROCKS MOUNTAIN; WEST SLOPE OF THE RIDGE, NEAR CRIMORA

wrr



"WAITING" FOR THE TRAIN

ooh



WRR



WRR



WRR

ON RIP RAP TRAIL, ON CALVARY ROCKS RIDGE OF ROCKS MOUNTAIN. UPPER LEFT, VIEW WEST INTO SHENANDOAH VALLEY; ABOVE VIEW NORTH - THE BLUE RIDGE



WRR

LEFT- TRAY FOOT MOUNTAIN- AS SEEN FROM SUMMIT OF BLACKROCK.

RIGHT- THE REGISTER ON THE A ON BLACKROCK - GOSH- NO, NOT HERE! THIS IS WHERE DICK INSISTED ON CHECKING THE MAP.



BOH

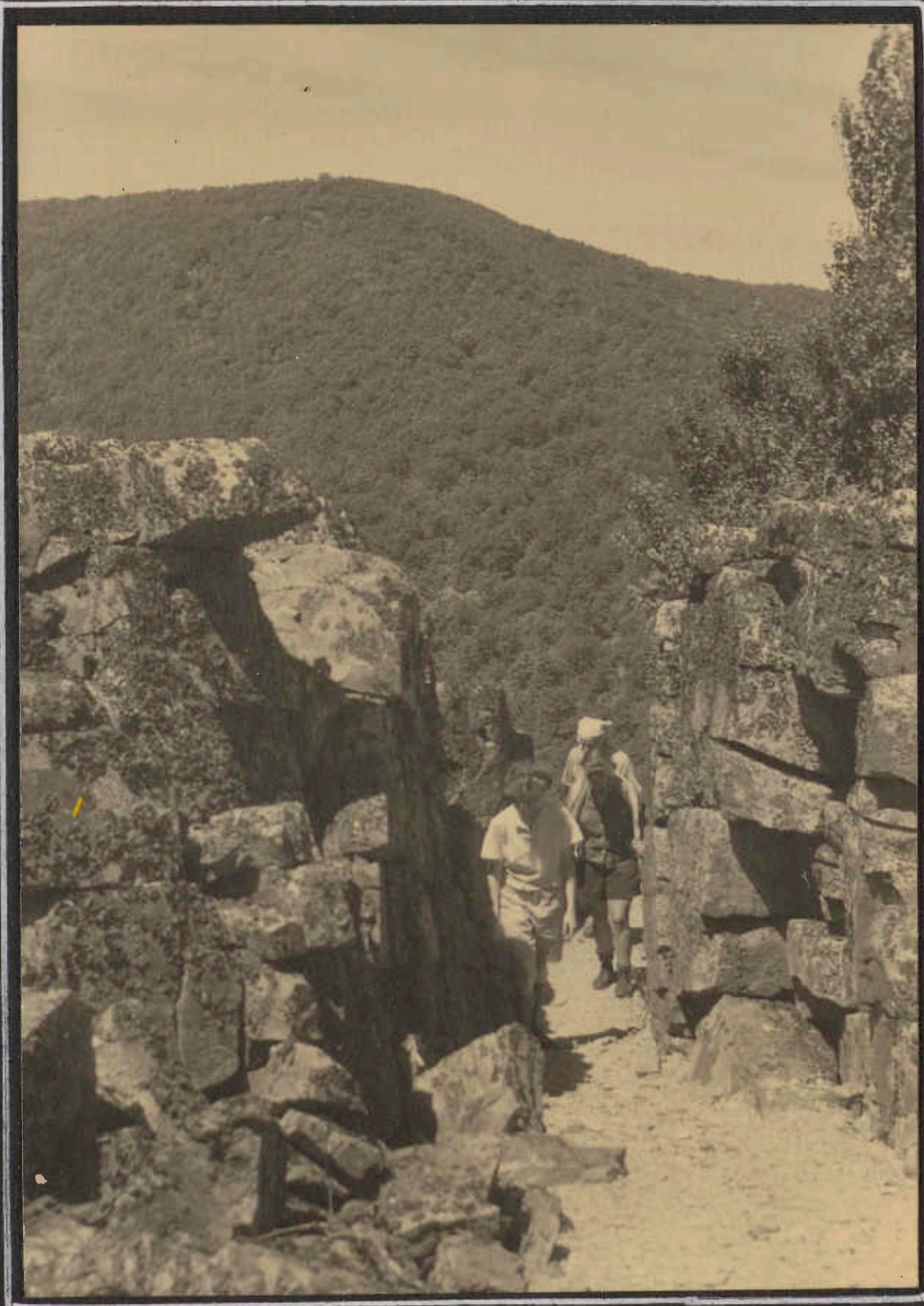
ON BLACK ROCK
APPALACHIAN TRAIL
IN THE SHENANDOAH PARK

AUGUST 1943

THE SIGN TELLS
THE STORY -



00H



WRR

SIDE TRAIL TO THE LOOKOUT TOWER
ON TRAYFOOT MOUNTAIN



WRR

SOUTH DOWN THE RIDGE, FROM BLACKROCK

AROUND DOYLE RIVER SHELTER

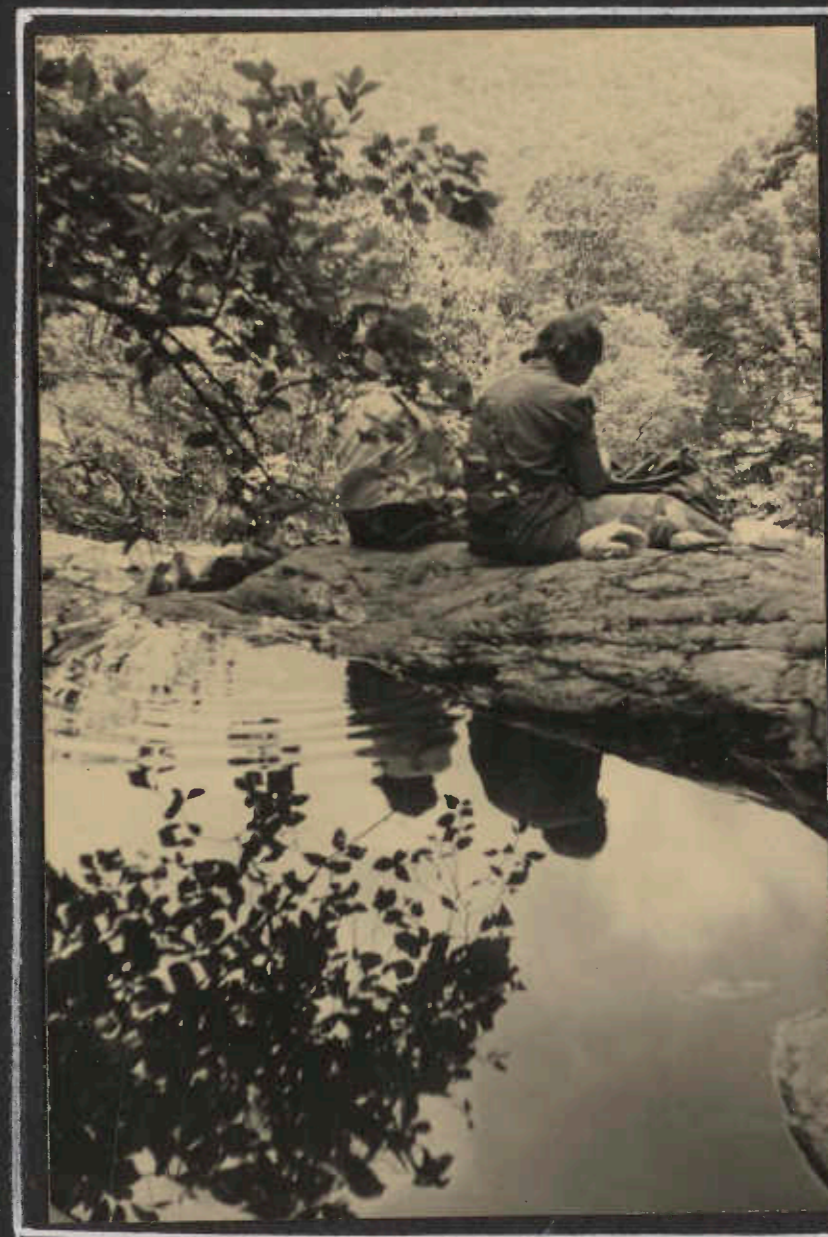
AUGUST 1943



"WATER BOY"



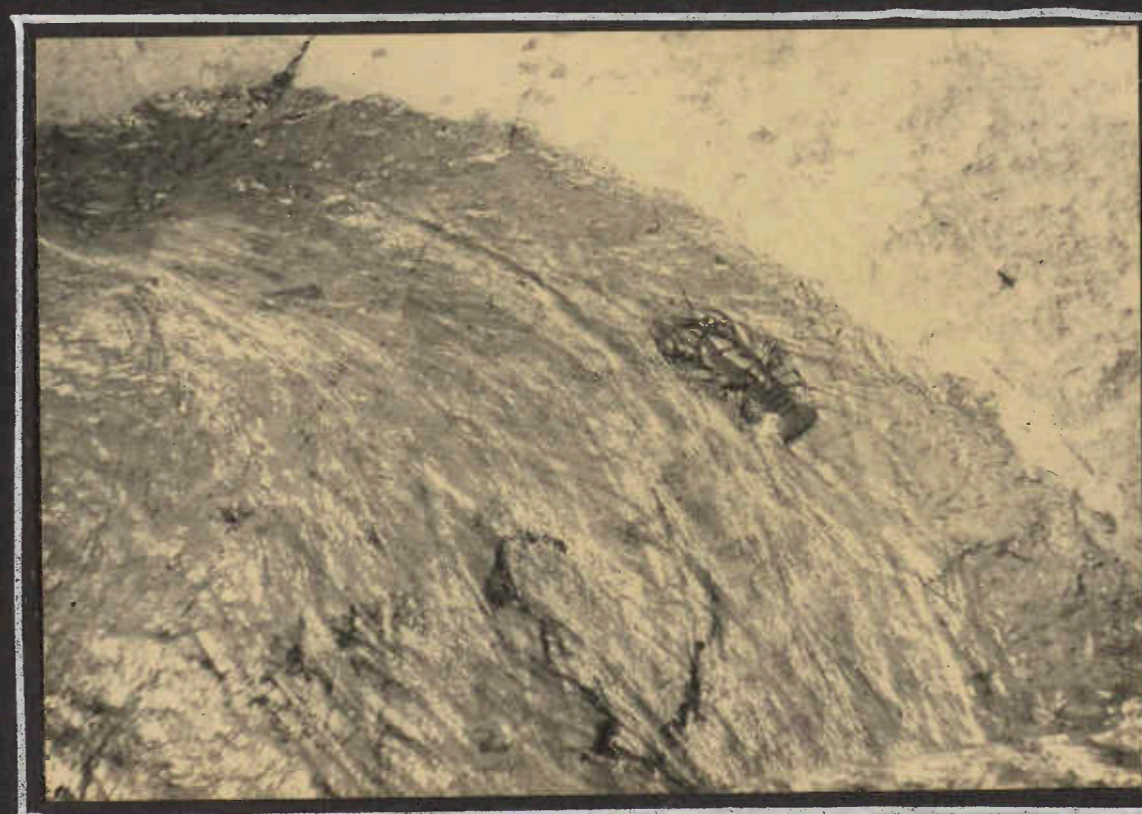
VIEW FROM CLIFF AT DOYLE RIVER SHELTER; CLOUDS
RACE OVER VIA GAP; PEAK IS CEDAR MOUNTAIN



POOL IN JONES RUN



MORE OF THE VIEW



ENTERPRISING CRAYFISH IN JONES RUN

SHENANDOAH PARK
PACK TRIP
1943



ONE RAIN ALL SUMMER! DRYING THINGS OUT AT DOYLE RIVER SHELTER. DICK'S CLASSY HAT IS STRETCHED OVER THE FLOUR CAN TO PREVENT SHRINKAGE!

00H



NORTH ALONG THE RIDGE FROM POWELL MOUNTAIN

00H

OS IS ON THE APPALACHIAN TRAIL, WE THINK.



R

THE NEAR RAVINE IS THAT OF BIG RUN. THE PROMINENT PEAKS ARE PROBABLY LEWIS PEAK AND ROCKY TOP. HARSH-BERGER PEAK AND THE MASSANUTTENS DIM ACROSS THE VALLEY



R

PROBABLY HIGH TOP FAR AWAY - BUT OS IS REALLY LOOKING FOR THE APPALACHIAN TRAIL, REPUTED TO RUN THRU THIS COUNTRY.



R

SHENANDOAH PACK TRIP - 1943
AROUND THE CAMPS



HAIR-DO'S MUST BE DONE!



AT PINEFIELD LEAN-TO



AN APPRAISING EYE!



AH-- FLAPJACKS



DISHES!



ooh



ooh

WILD FLOWERS IN THE MOUNTAINS!



ooh

EVER NORTHWARD



wrrr

LOOKING BACK FOR A CHANGE- THE DEEP RAVINE IS THAT OF IVY CREEK- THE "CONE" IS TRAYFOOT



ooh

LOFT MOUNTAIN- FROM ABOVE SIMMONS GAP. AND NOTE THE HAT!

SHENANDOAH PACK TRIP
AUGUST 1943



WRR



OOH

SOME PEOPLE LIKE TO
EAT - AT THE HIGH-
TOP LEAN-TO



WRR

ON THE Δ NORTH OF SIMMONS
GAP - THE NEAR ONE IS
LOFT MOUNTAIN. IN UPPER
PICTURE NOTE DISTANT
PEAK - TRAYFOOT - JUST
SHOWING ABOVE RIDGE



OOH

HERE'S THE QUARTETTE
AT THE
HIGH TOP LEANTO



OOH



OOH

THE HILLSIDE BY THE LEANTO



"HIGH TOP"

VIEW FROM THE SUMMIT



AT THE LEAN-TO



HIGH POINT OF THE TRIP
FINAL MORNING - FROM HERE ON IT WAS DOWN



THE SIGN IN SWIFT RUN GAP - AT END OF TRIP



SIGN OF THE TIMES!
EVENING PRIMROSE GROWING IN CENTER OF THE
ONCE BUSY PARKING AREA IN SWIFT RUN GAP

UNION BRIDGE - NEW WINDSOR

SEPTEMBER 12, 1943



WALKING THE OPEN ROAD



"THE COUNTRYSIDE"



WOODS ROADS ARE BETTER



LEADER GETTING CONTENTED



THERE'S ALWAYS A LUNCH



SHE'S REPUTED TO HAVE POLISHED 'EM ALL OFF - EXCEPT THE TABLE

"WORK TRIPS"
TO THE
CRAMPTON GAP LEAN-TO
AT VARIOUS TIMES



Bill Kemper

LOOKS LIKE OS AND ALLEN PAINT THE ROOF



Ed Boettiger

CEMENT MIXERS AND CONSTRUCTION ENGINEERS, WE'D SAY



FRANCIS HAS
TO DO WITH
DISHWASHING
IT SEEMS

W.M.R.



MEN ALWAYS
GRAVITATE
TO THE FIRE

EB

HEAD-ON VIEW
OF THE LEAN-TO



W.M.R.

COMPLEMENTARY
STRUCTURE IS
NOT OVERLOOKED



EB

NEW FREEDOM TO GLEN ROCK - PENNSYLVANIA
SEPTEMBER 26, 1943



WINSLOW IS TRYING TO GET THEM LINED UP ON THE MASON-DIXON
LINE - AND OS IS TRYING TO PHOTOGRAPH WINSLOW

WRR



→ WHICH HE DID!

0091



THIS KIND OF
COUNTRY

WRR



SO HERE WE ARE - ON THE LINE

0004



AND INTO THE HILLS

WRR

NEW FREEDOM TO GLEN ROCK
SEPTEMBER 1943



001f

"WHO'S THE GIRL, DICK?"
THE SUDDEN QUERY NEARLY STARTLED DICK
INTO TELLING - BUT THEY MEANT ONLY
THE GIRL ON THE "AD" IN THE PACK!



001h

NANCY AND MARGARET



WRR

BRIDGE - STREAM - WATERFALL - ETC. ETC.



001h

MORGAN GOT IT THE FIRST TIME!



WRR

AT THE END OF THE HIKE - GLEN ROCK IMMEDIATELY BELOW

THE ROUND-TOP TRIP

OCTOBER 24, 1943



IT'S ROUND TOP - AND OLIVER GAZES LONG AND EARNESTLY TO IMPRESS THE PICTURE ON HIS MIND - TO BE SAFE

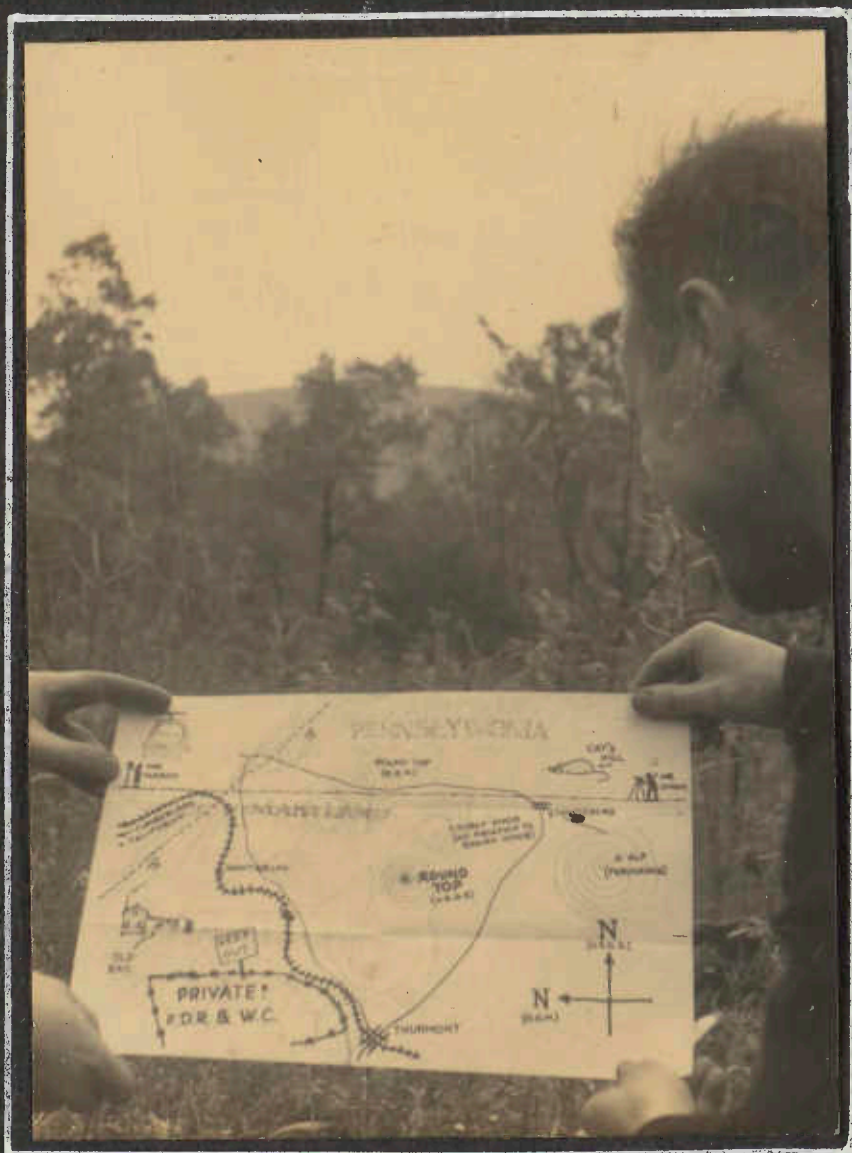
WMR

PROFITING BY THE EXAMPLE OF THE APRIL TRIP WHEN THE CLUB NOT ONLY DID NOT GET TO ROUND TOP BUT HIKED IN THE WRONG DIRECTION INTO THE NEXT STATE, ELABORATE PREPARATIONS WERE MADE AND PRECAUTIONS TAKEN THAT THE LEADER NOT AGAIN TAKE TRUSTING HIKERS ASTRAY. NOTE SIGN BEING AFFIXED TO THE TRIP LEADER, AN OLD HAND IN THE CATOCTINS. NOTE TOO THAT CHANCES WERE NO LONGER TAKEN ON "QUADS" WITH THEIR TOO CONVENTIONAL COMPASS INDICATORS -- A NEW MAP OF THE AREA WAS HASTILY MADE UP FOR THE TRIP.



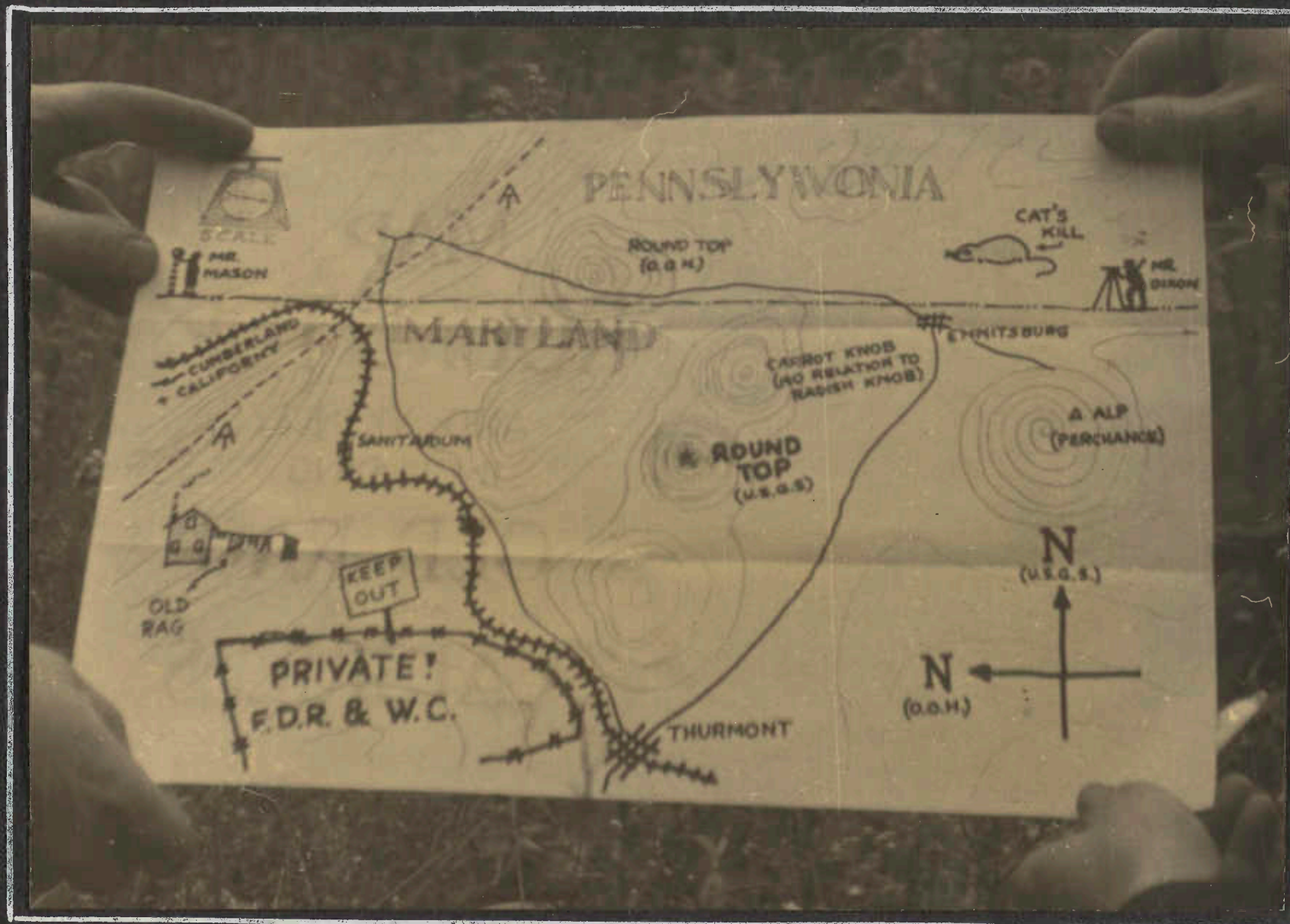
NO BUST

WH FOR OOH



AT THE FIRST SIGN OF DOUBT AS TO THE WAY - THE MAP WAS EARNESTLY CONSULTED

OOH



MAP - BY WINSLOW HARTFORD

Photo - Os Heavd

ROUND-TOP IN THE CATOCTINS



EXCURSIONS COMMITTEE CHAIRMAN IS DELIGHTED!

00H



WINNIE

00H

FINALLY MADE IT! OCTOBER 24, 1943



TRIPLEADER DIDN'T GET LOST THIS TIME!

WH-00H



CAPTION IT YOURSELF! WE'RE TIRED OF SAYING "LUNCH"

WMB



TIME TO SPARE AT THURMONT

WMB

BLUE RIDGE SUMMIT
NOVEMBER 21, 1943



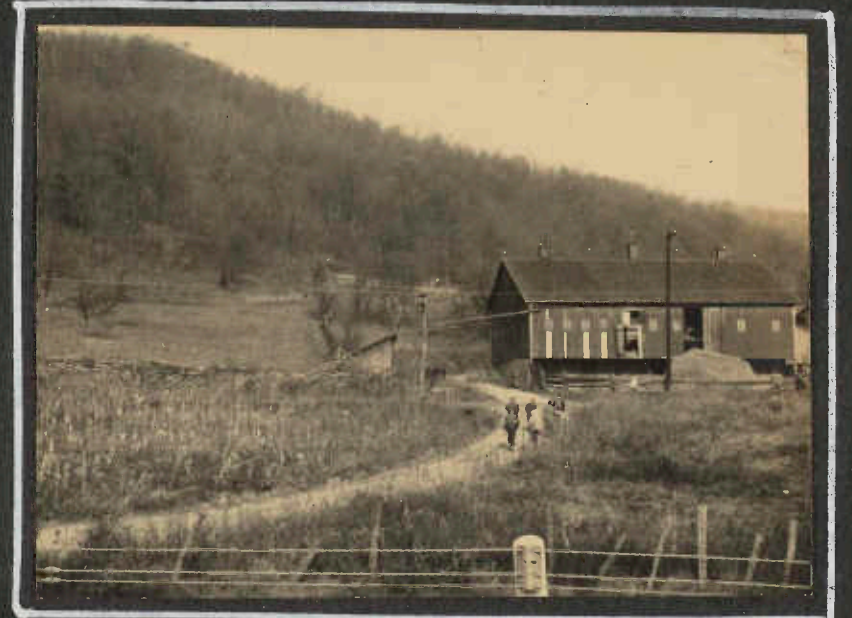
ON WOODS ROADS
TWENTY-FOUR HIKERS ON THIS TRIP



HARRY COX, CENTER WITH STAFF, WAS TRIP LEADER



ACROSS OPEN FIELDS



ONE END OF JACK'S MOUNTAIN



A PAUSE - GOING DOWN HAYCOCK HILL



OS STOPS TO GET A "READING."
HEAVY HAZE IN THE VALLEY -



THE OTHER END OF JACKS MOUNTAIN

BLUE RIDGE SUMMIT TRIP

NOVEMBER 21, 1943



OS IS STUDYING EITHER A MAP OR THE FUNNIES

JH



THERE ARE VARIATIONS IN HOW PEOPLE REST

WRR



DISCUSSION GROUPS

JH



IT'S "MR + MRS" NOW

VB



WINSLOW WANTS TO MAKE SURE IT ISN'T A MAP

VB



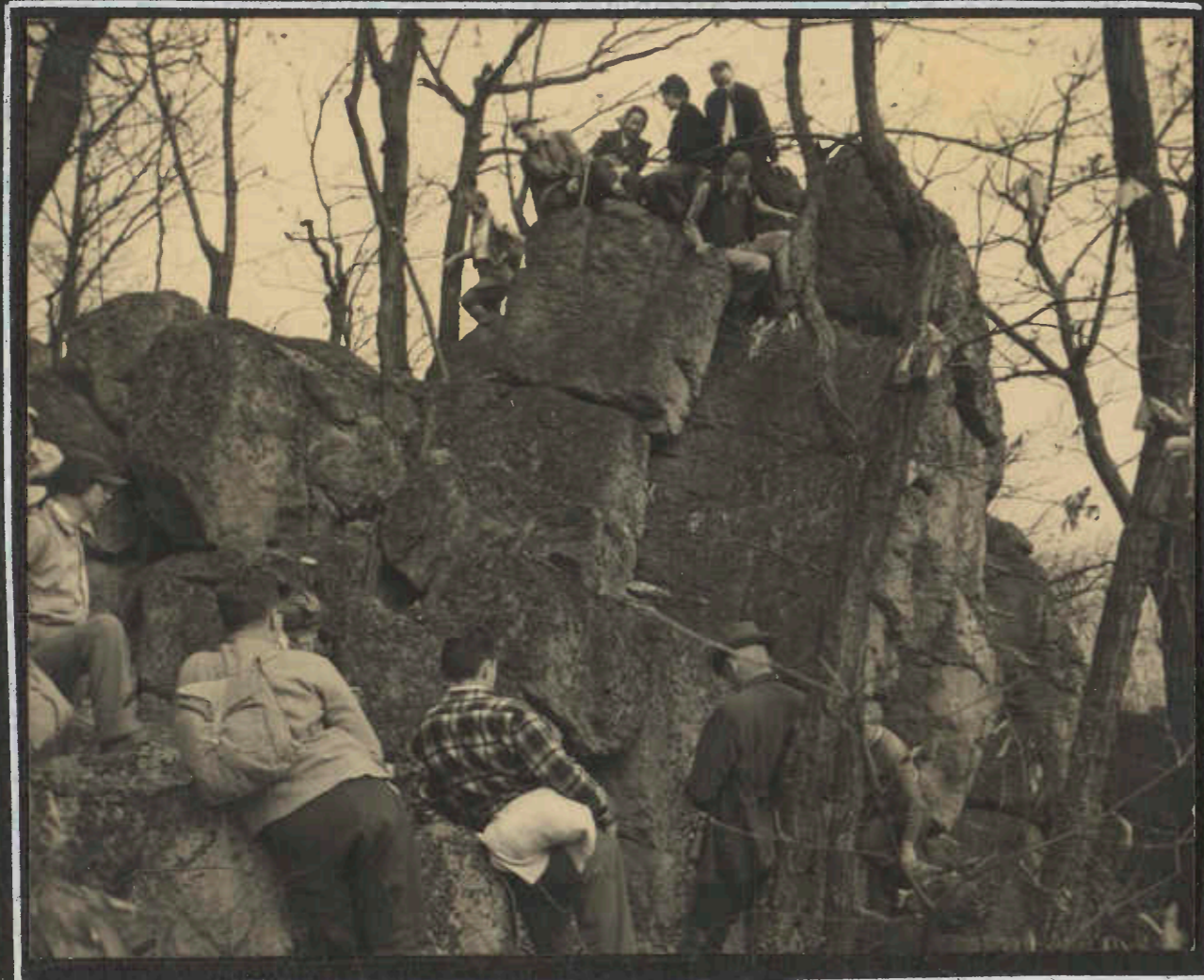
LET'S GET GOING - SOON

JH

THERE WAS A LONG MID-AFTERNOON REST PERIOD

BLUE RIDGE SUMMIT

NOVEMBER 1943



WRR

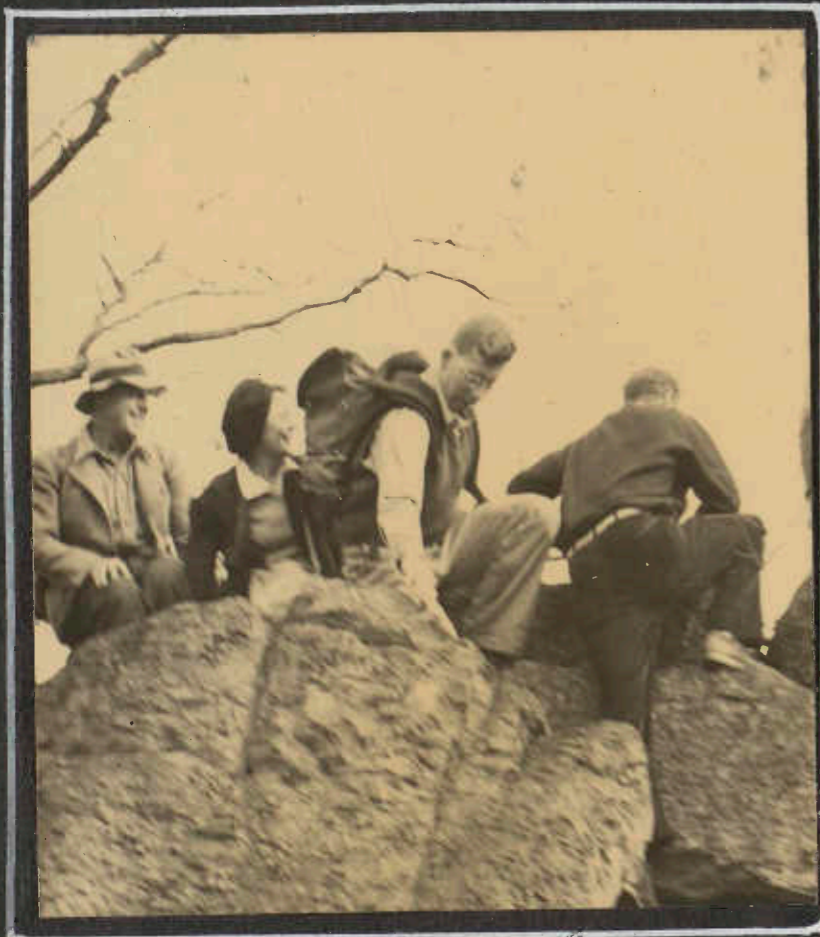
IN THE PATAPSCO STATE PARK
ELICOTT CITY - ILCHESTER - ANALON

DECEMBER 12, 1943

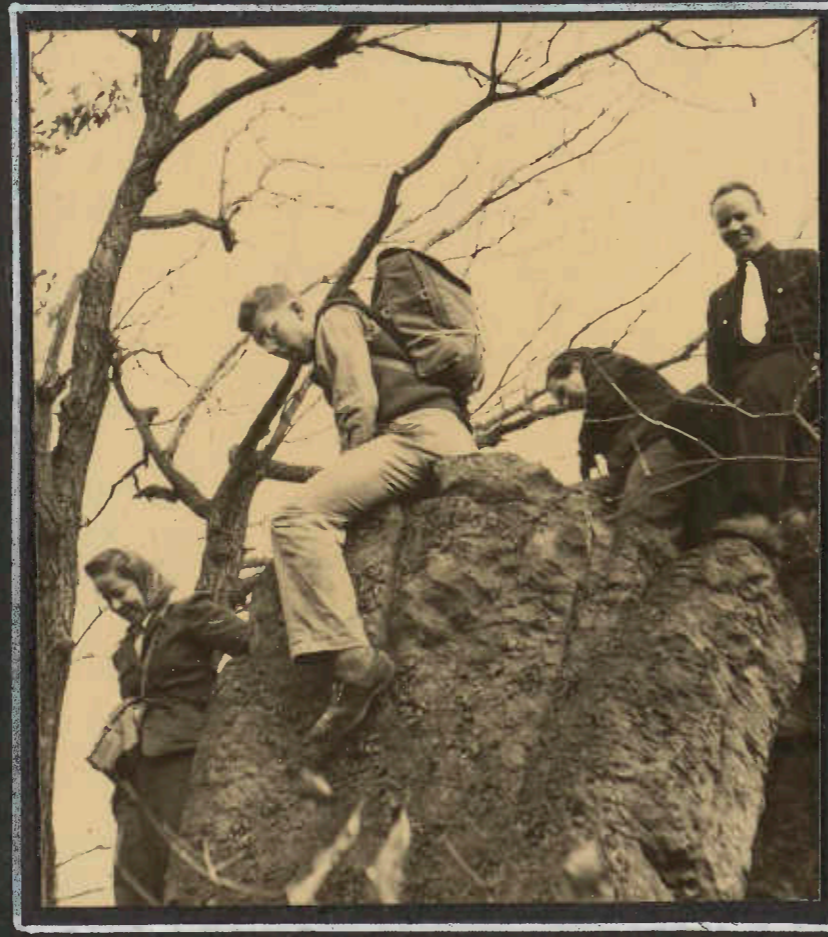


WRR

THE ELECTRIC DAM - FROM THE ROCKS AT ORANGE GROVE



JH



JH

"BEAR ROCK" - NEAR END OF HIKE - WAS "IRRESISTIBLE"



WRR

"FALLS" IN CASCADE BRANCH

LAST TRIP OF THE YEAR