

1942  
MOUNTAIN CLUB  
OF  
MARYLAND

Pictures principally by  
Winslow Hartford, Osborne O. Heald,  
Winnie Rodemeyer, W. R. Roessler,  
Jean Russell.

Some by  
Lawrence Bruns, Mike Enich, Merle Hart,  
Bill Kemper, Lyman Emerson, R. Smelkinson

THE PHOTOGRAPHY GROUP  
OCTOBER 18, 1944

"MCM - VOLUME 8"

NEW YEAR'S - 1942

AT PINE GROVE FURNACE SHELTER



THE PARTY IS ON - ABOUT ONE O'CLOCK (A.M.) AFTER GETTING BACK FROM THE CUSTOMARY HIKE TO SUNSET ROCK, ON LITTLE ROCKY RIDGE. THE THREE FELLOWS BACK IN CENTER - RAYMOND CREEKMORE, ARTHUR O'LINTO, AND LYMAN EMERSON - ARE DOING WELL LEADING THE SINGING OTHERS IN THE PICTURE - AT LEFT - BETTY GOLDSMITH, HERMAN PAGE, DOROTHY OLINTO. TO THE RIGHT - DOROTHY CREEKMORE, VIVIAN EMERSON, HELEN COGGINS, AND OLIVER ISAAC.

THE PARTY GOES ON - CREEKY IS WARMING UP AT THE STOVE PIPE - HELEN COGGINS AND VIOLA BUELL OVER AT LEFT ENJOY IT FROM THE SIDE LINES. RUTH LENDERKING DOROTHY MOORE, JEAN AND GEORGE RUSSELL HAVE "REFRESHMENTS". FRANCIS OLD IS STAYING DIGNIFIED



NEW YEAR'S DAY - 1942



TRYING TO GET THE HIKE UNDER WAY.  
OVERGROWN TEDDY BEAR AT LEFT IS OLIVER ISAAC.



MANAGED TO GET ALL BUT TWO IN THE PICTURE THIS TIME - FRONT  
ROW - BETTY GOLDSMITH, ALICE BROWN, DICK ROESSLER, VIOLA  
BUELL, RUBY BERE. STANDING - DOROTHY AND RAYMOND CREEKMORE,  
HELEN COGGINS, OLIVER ISAAC, JEAN RUSSELL, BEN EVERINGHIM,  
GRACE WAGNER, HERMAN PAGE, VIVIAN EMERSON, DOROTHY  
OLINTO, GEORGE RUSSELL, RUTH LENDERKING, DOROTHY MOORE,  
AND FRANCIS OLD.



SOFT SNOW - CLINGING TO THE TREES



IT'S A NICE PLACE - BUT THEY DECIDE THAT  
THEY WOULD PREFER BALTIMORE COUNTY



ON THE APPALACHIAN TRAIL - NEAR THE SHELTER

NEW YEAR'S TRIP



ON LITTLE ROCKY RIDGE  
CAREFUL GOING OVER THE CREST

APPALACHIAN TRAIL HIKE

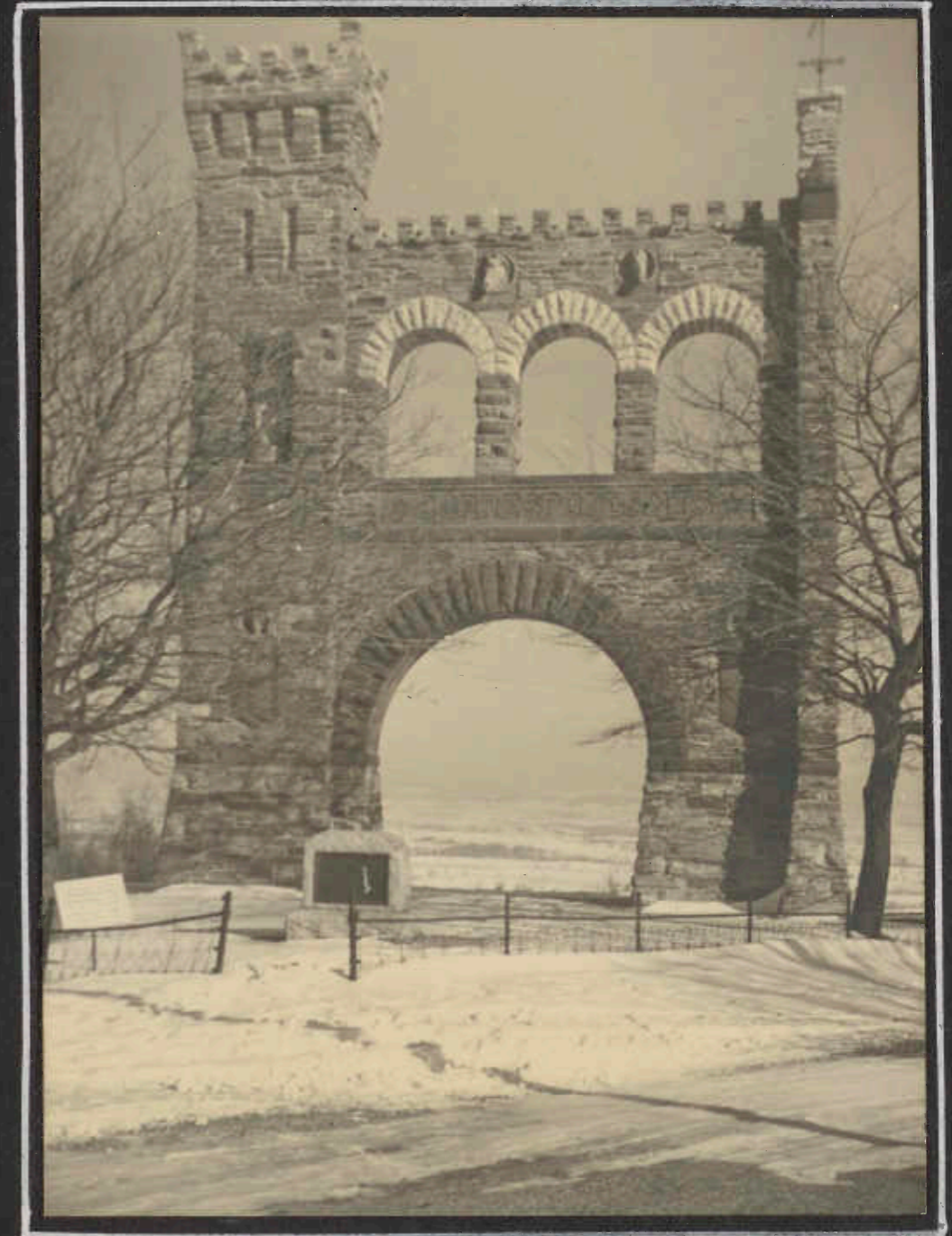
TURNER'S GAP TO WEVERTON

JANUARY 11, 1942



"UP" LAMBS KNOLL

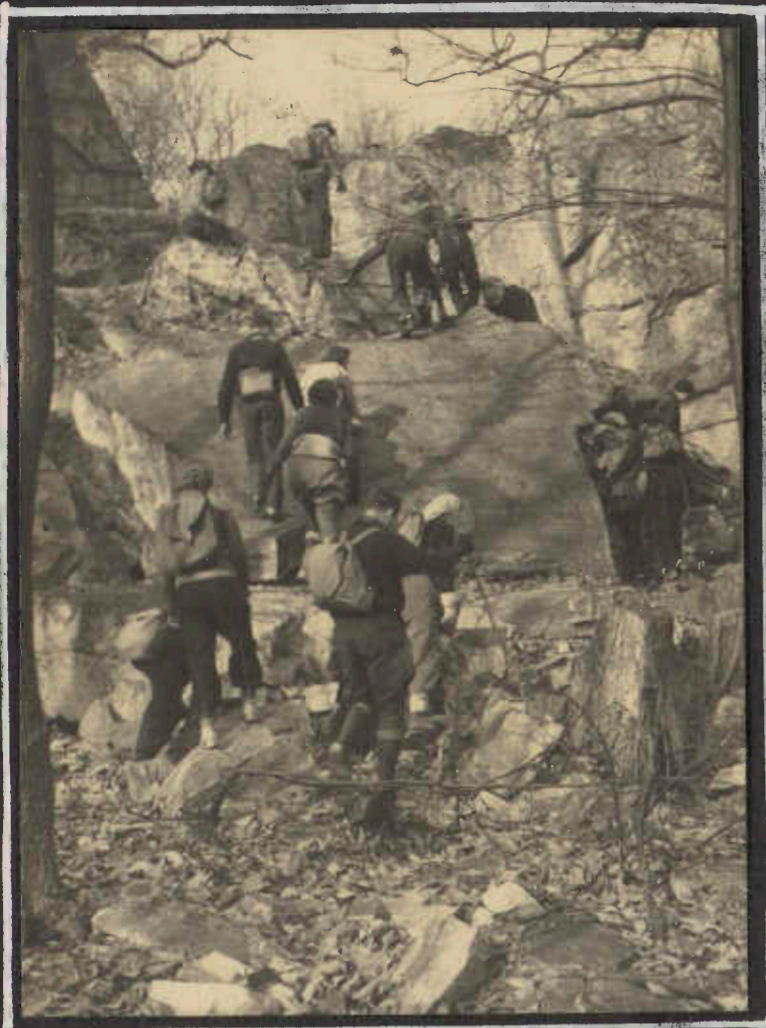
ALICE BROWN, MORGAN BARR, BETTY  
GOLDSMITH, MARGARET OAKLEY



THE MEMORIAL ARCH AT CRAMPTON GAP

IN THE CATOCTINS

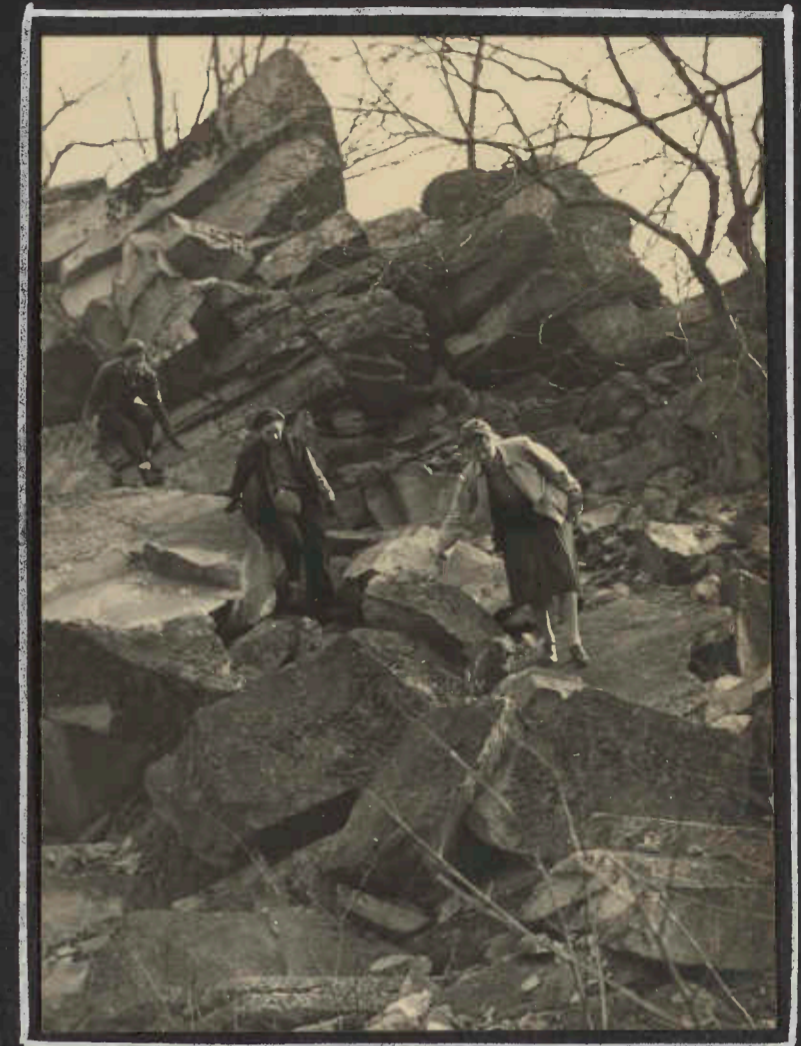
JANUARY 25, 1942



UP THIS SIDE -- LIKE THIS



A SUNNY SPOT- SO REST A BIT



AND DOWN THIS SIDE



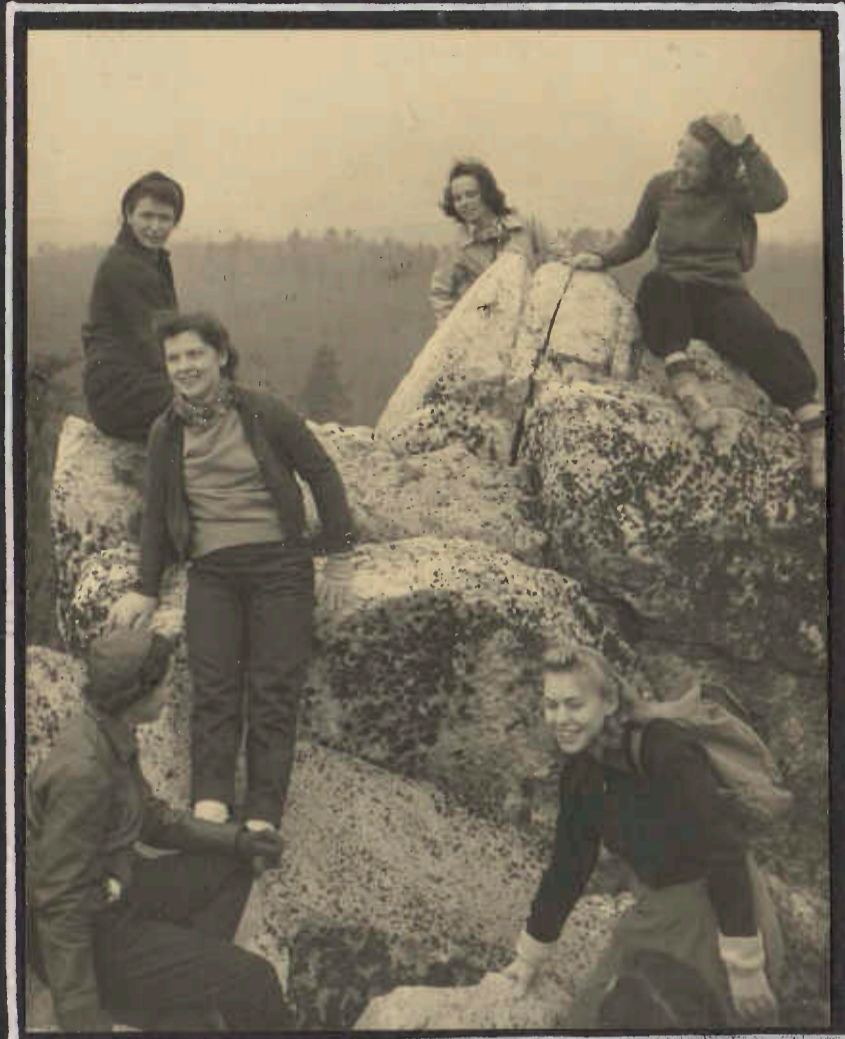
MORGAN SEEMS TO BE CHECKING COUNT AGAIN!



COME ON EVERYBODY - LOOK AT THE CAMERA  
THE BRIDGE WILL HOLD

IN THE CATOCTINS

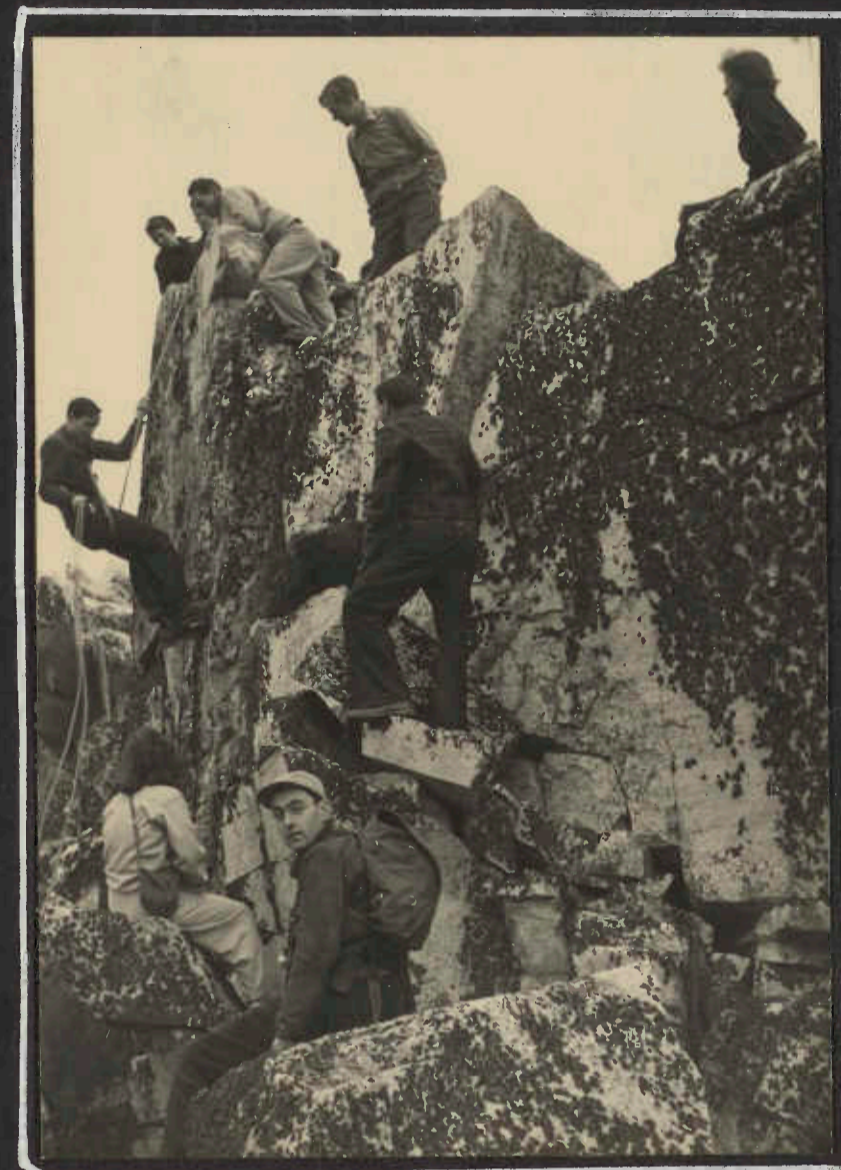
JANUARY 1942



WELL-WE GOT THEM UP HERE FOR THE PICTURE



ARTHUR OLINTO IS SERIOUS  
AS LEWIS LATANE - WITH  
THAT BONNET - TELLS LYMAN  
EMERSON A GOOD ONE



THE ROCK CLIMBERS HOLD FORTH



ISN'T LATANE'S HEADGEAR -- CUTE

BEATING THE BUSH AROUND WHITEHALL  
BALTIMORE COUNTY HIKE  
FEBRUARY 8, 1942

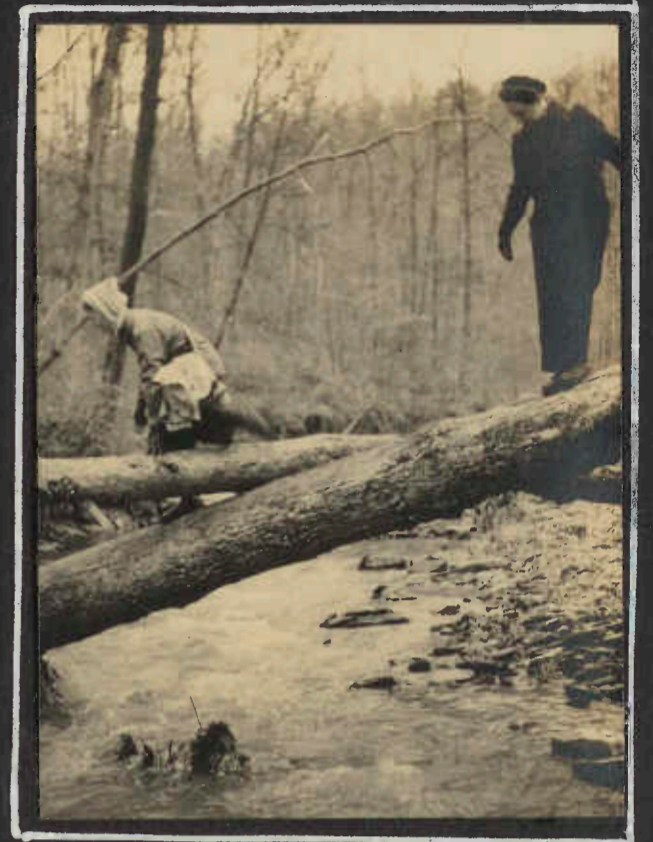


SECOND MINE BRANCH

RS



WRR



CHOICE OF BRIDGES

WRR

AT THIS POINT IT IS CUSTOMARY FOR SOMETHING TO RIP. RUBY SAFE, ALEC EXTENDS HELPING HAND TO MARY LEE EVANS. VIRGINIA IS CAREFUL



WRR

BALTIMORE COUNTY FENCES - BUT THIS ONE WASN'T BARBED WIRE



WRR

WELL WELL! A WAY THROUGH!



RS

THIS BRIDGE HAS A HANDRAIL

WHITEHALL, GRAYSTONE  
SECOND MINE BRANCH  
ETC.  
FEBRUARY 1942



GEORGE KAIN MUST HAVE REACHED THE  
END OF HIS LUNCH!

WRR



VIRGINIA, WINNIE, ELOISE

WRR



ED AND DICK -- LOOK THEM OVER

RS



RUTH, MARY, MARY LEE, RUBY, AND "BOBBY"

RS



ALEC AND WINSLOW DISCUSS MATTERS OF STATE AT THE  
HIGH END - WHILE ED TAKES CARE OF THE BEVY  
AT THE RIGHT.

WRR

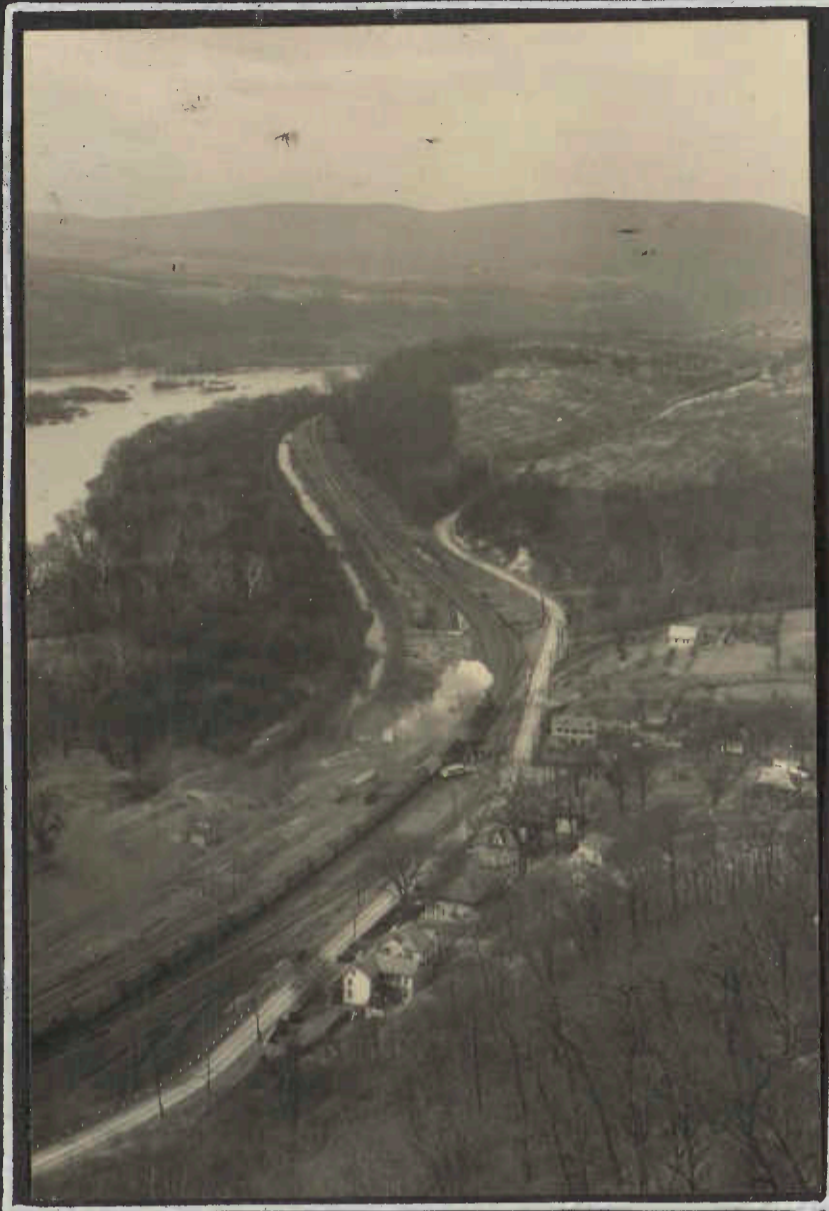
WINSLOW POINTS  
THE WAY - UP  
SOME CLIFFS



WMR



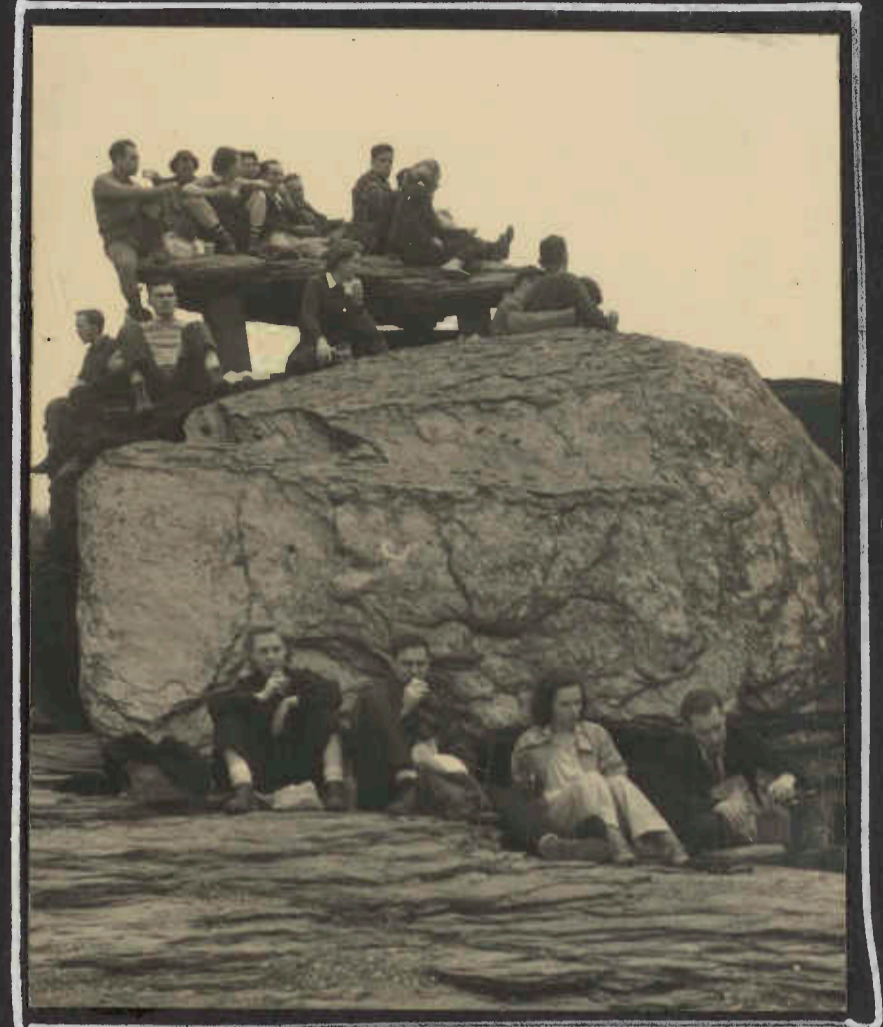
APPALACHIAN TRAIL HIKE  
WEVERTON TO KEYES GAP - MARCH 8, 1942



THE POTOMAC, THE OLD C+O CANAL, THE F+O  
AND ROUTE 340, WESTWARD TOWARDS HARPERS FERRY



ON THE WEVERTON CLIFFS -  
SIGHTING THE GAP AT HARPERS FERRY



LUNCH - ON JEFFERSON ROCK



IN THE MIDDLE OF THE POTOMAC OFF SANDY HOOK.  
"CONSTRUCTION" FOR PIERS OF NEW BRIDGE



THE SHENANDOAH RIVER - FROM JEFFERSON ROCK

WEVERTON TO KEYES GAP - MARCH 1942



THE FERRY ACROSS THE SHENANDOAH -

WRR



LB

DOWN THE POTOMAC - FROM CHIMNEY ROCK. NOTE SOUTH MOUNTAIN AT WEVERTON, SHORT HILL, AND, WAY BACK, CATOCTINS



BAYARD SEEMS ABSENT-MINDEDLY WORKING THAT SECOND PADDLE. (MAYBE HE'S STEERING)

LB



LB

HARPER'S FERRY AND THE POTOMAC - FROM LOUDOUN HEIGHTS

TUSCARORA MOUNTAIN  
PENNSYLVANIA  
MARCH 23, 1942



PENNSYLVANIA'S ALLEGHENIES - NORTH FROM THE TUSCARORA TOWER

SCENERY TO SEE

THE BUS "MADE IT" UP COVE MOUNTAIN . . . . .  
AND THEN IT WAS HIKE UP HIGHWAY 30  
TO THE CREST AT "TUSCARORA SUMMIT."



ANOTHER ONE OF PATH VALLEY AND THE MOUNTAINS NEAR AND FAR

AT THE COWAN GAP RECREATION AREA

TUSCARORA TRIP - MARCH 1942  
 O.S. HEARD WENT IN FOR "CHARACTER PICTURES"



DOROTHY ---- AND JEAN



MIKE, ELOISE, GEORGE, JEAN, AND BETTY ----  
 MUST BE LISTENING TO AN ORATION



GEORGE TELLS VIVIAN AND WINSLOW



MIRIAM'S COLD; RUTH COUNTS CALORIES,  
 MIKE FOLLOWS THE STOCK MARKET



"JACK" OAKLEY "SO WHAT'S" THE CAMERA:  
 MARGARET MUST BE LOOKING AT WINSLOW  
 IN NEXT PICTURE; MARY TAKES NOTES



SWAMI WINSLOW APPLE-POLISHING -  
 DOROTHY SPOONING?



WRR

READY - ALMOST - TO MOVE ON AFTER LUNCH -



WRR

WATER COLD - NO SWIMMING



WONDER IF ED'S LINE HAS ANYTHING TO DO WITH ESTELLE'S WEARING EARMUFFS?



OOH

RECREATION AREA - RECREATIONAL INTERESTS



THE "WALL" THAT IS NORTH MOUNTAIN

WRR

NORTH MOUNTAIN  
THE ALLEGHENY FRONT  
IN WEST VIRGINIA  
JUST BEYOND MARTINSBURG

APRIL 19, 1942



WRR

NORTHWARD ALONG  
THE RIDGE - THE  
GREAT VALLEY TO  
THE EAST



DIGGING AROUND FOR  
LUNCH AT THE TOWER

WRR



LUNCH-TIME POSES

WRR

OS HEARD IS MAKING  
STRANGE PASSES AND  
MUTTERING WIERD  
INCANTATIONS OVER  
FRANK'S FIRE - - -  
WHILE DOROTHY  
AWAITS THE SOUP



WRR

NORTH MOUNTAIN - WEST VIRGINIA - MARCH 1942



WMR

S/SGT. COCHEL - LEADS UP THE MOUNTAIN



WRR

"HOME IN THE HILLS"



WRR

DOWN THE WEST SLOPE FROM MILLS GAP -  
THIRD HILL MOUNTAIN ACROSS THE WAY

"RATHER FAR OUT IN THE VALLEY"  
THE "CAN READ A MAP" SQUAD  
GOES TO WORK - OSHEARD, FRANK  
CALAFIORE, AND VIC MONKE



WMR



WMR

ED. NOTE - THE TAVERN WAS GONE.

PINNACLES CAMP - FORK MOUNTAIN HIKE  
SHENANDOAH PARK

MAY 9-10, 1942



WMR

SLEEPING BY THE PINES  
PINNACLES PKNIC GROUND



WAR

MISSED ONLY ALLEN RHODE. IN THE PICTURE - STANDING - MIKE EMICH, DICK ROESSLER, HARDING EKLUND. SEATED - ON RAIL - DOROTHY CALAFIORE, BETTY FISHER, RUTH LENDERKING, ELSIE SKIDGELL, OS HEARD, ELOISE COCKEL. FRONT ROW - MIRIAM BRUNS, FRANK CALAFIORE, ESTELLE WETZLER, WINNIE RODEMEYER, LARRY BRUNS, DOROTHY WATSON, JEAN RUSSELL, GEORGE RUSSELL.



DICK AND FRANK SET "AUTOMATIC RELEASES" 00H



WINNIE GETS  
CARRIED INTO THE  
PICTURE ABOVE

00H



FORK MOUNTAIN - SHENANDOAH PARK  
MAY 1942

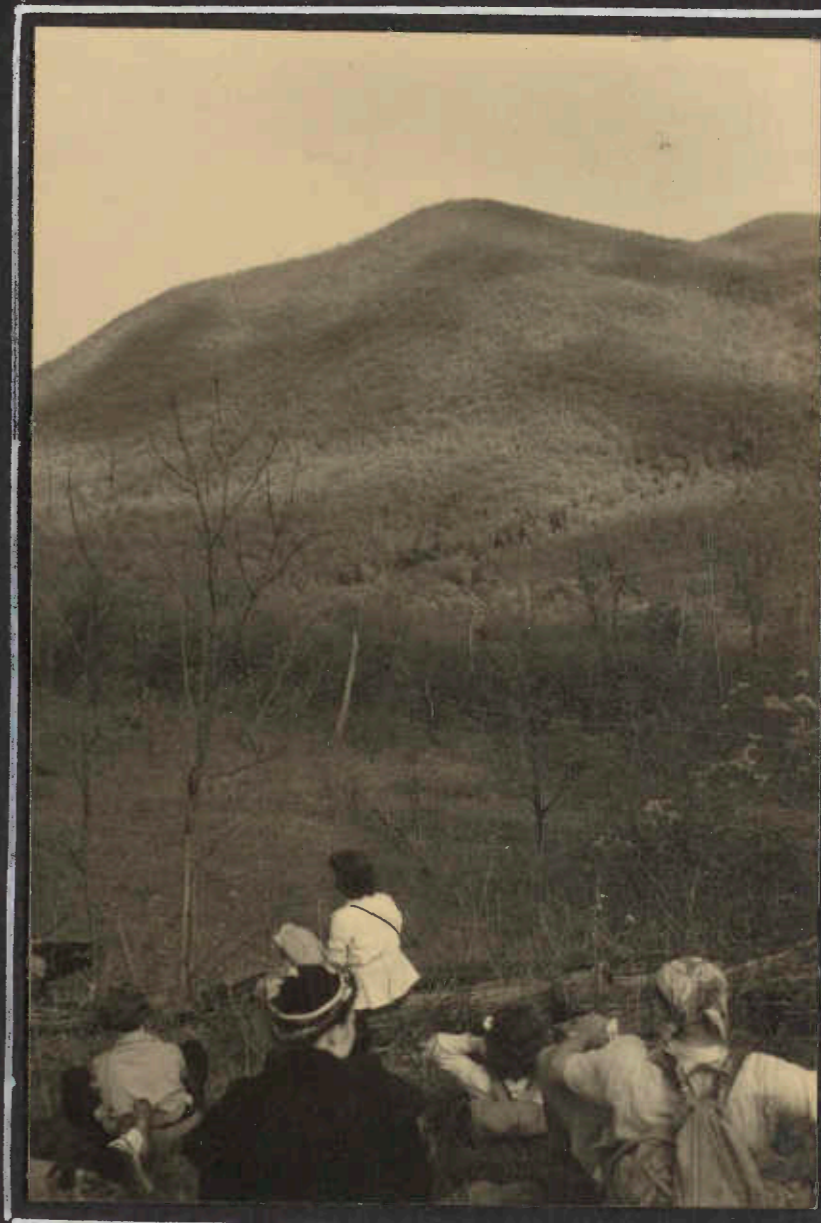


ESTELLE

ooh

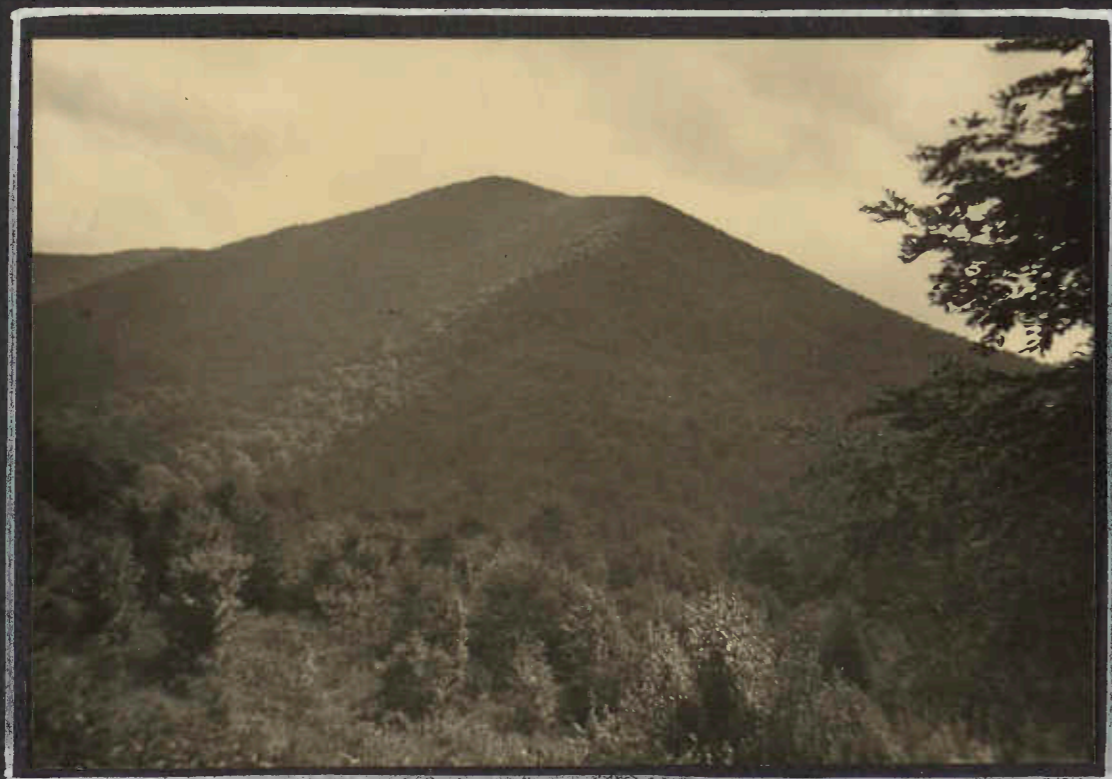


DOGWOOD



LOOKING BACK OVER  
THE ROUTE - FORK MOUNTAIN  
IS A 3800-FT. JOB

wrr



FORK MOUNTAIN

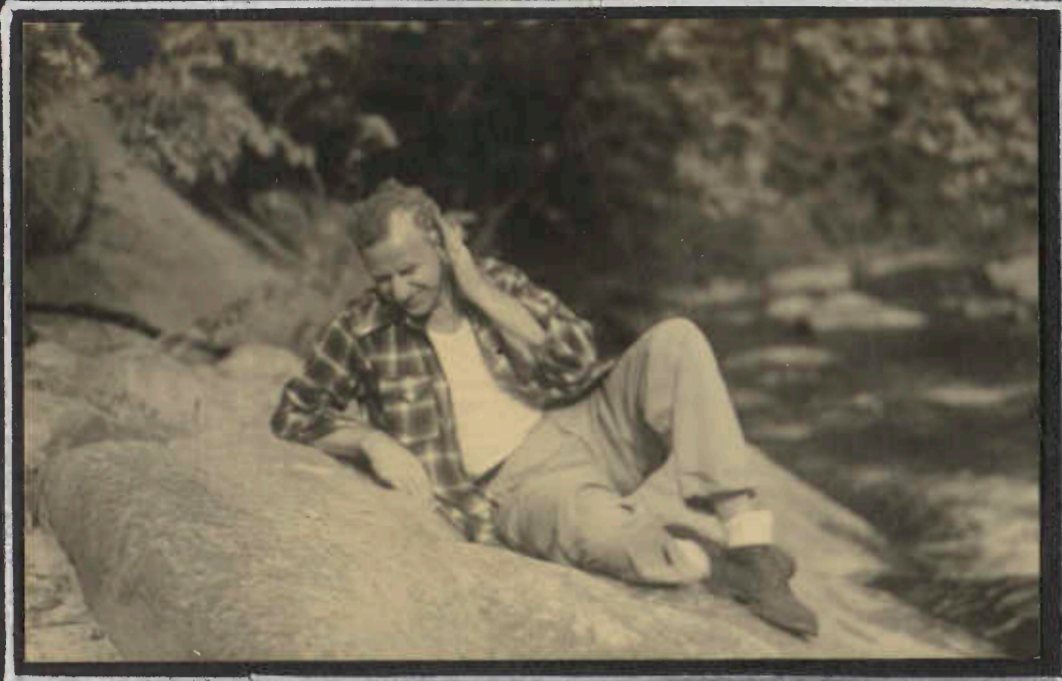
me



THE LAST TRIP BEFORE GAS RATIONING - THE CLOUD OF  
"MAYBE NO MORE TRIPS" APPEARS IN THE SKY.

ooh

ELK NECK - MAY 1942



AT A MORE  
LEISURELY PACE

MERLE LEADS  
THE HIKE

ALLEN SPOTS  
A ROBIN -

"PAW-PAW" SHELTER - JUNE 1942



MAYBE IT  
WAS A TURKEY  
BUT OLIVER  
HAS OTHER  
INTERESTS



LILLIAN GARDNER  
GOES IN FOR A BOOK



GARCON!



ELOISE READS  
THE FUNNYPAPERS  
TO OLIVER



Merle Hearst

O O Heard

ALL-NIGHT MOONLIGHT

DELTA, PENNSYLVANIA, TO THE ROCKS OF DEER CREEK

JULY 25-26, 1942



DOWN DELTA'S MAIN STREET



MCM PREPARED FOR RAIN



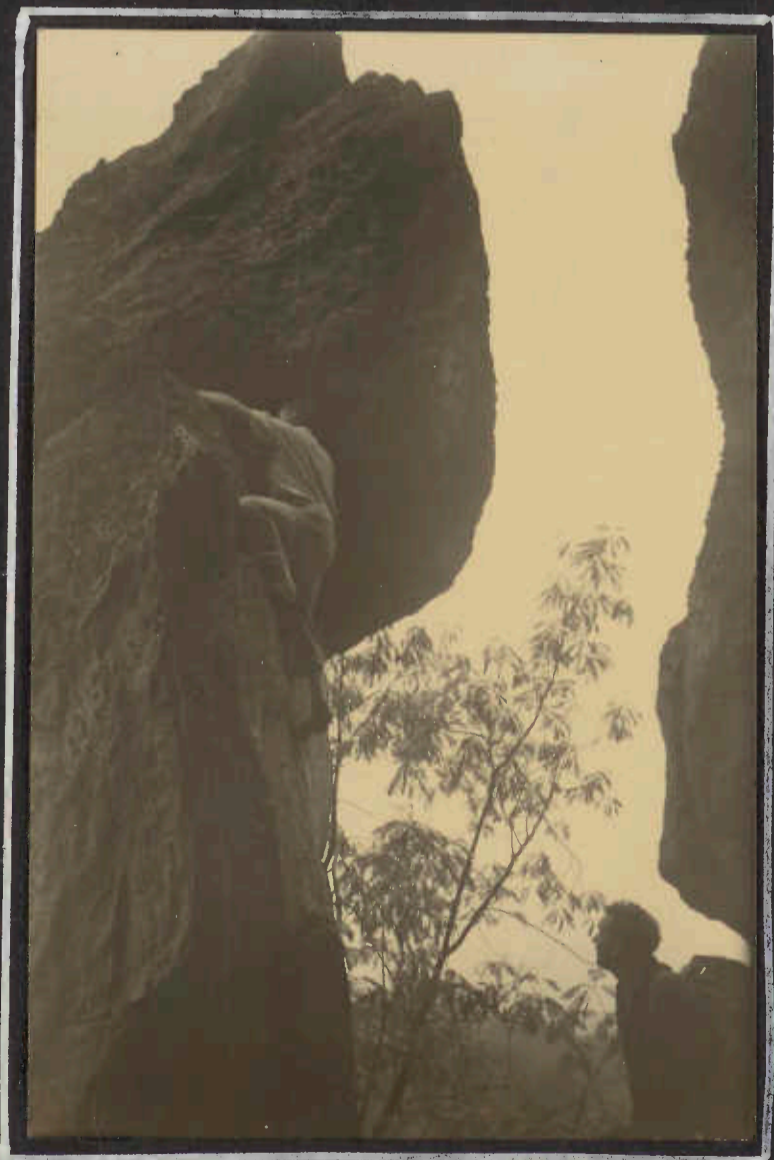
CONSULTING SCHEDULES AND MAPS



BREAKFAST ON THE ROCKS

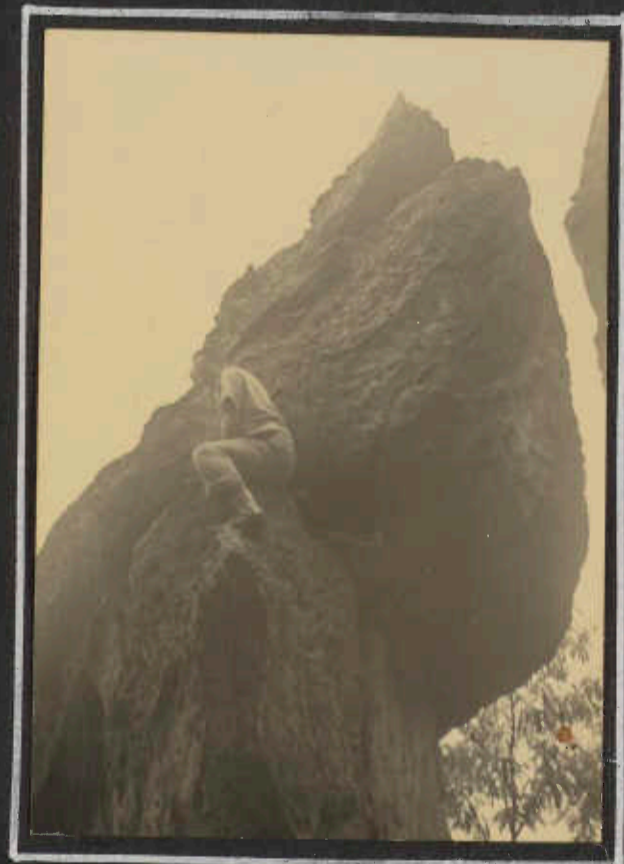


OK, BETTY, SEE FOR YOURSELF ----  
WINGLOW IS WELL SATISFIED WITH  
THE WAY THE PAN IS BEING CLEANED



GOSH! HE'S GOING TO MAKE IT!

WH



GETTING THERE

HOMeward BOUND - ALL NIGHT HIKE - JULY 26, 1942



BOARDING THE "MA AND PA"

WMA



MIKE WATCHES HER AWAKEN

WM

LOVE POINT - EASTERN SHORE - BIKE TRIP

AUGUST 1942



RAIN 'N ALL

EE  
WMA



LARRY WAS TRIP LEADER - GROUPS  
LINE UP AND SET FORTH

WMA



THE LONG-DISTANCE RIDERS  
THREE OF THEM - WINNIE, ANOTHER, WAS PHOTOGRAPHER

WMA

# SHENANDOAH PARK PACK TRIP

JULY 25- AUGUST 2, 1942

THE "COMMISSARY" IS REALLY IMPORTANT ON A TRIP LIKE THIS - SO HERE THEY ARE THE NIGHT BEFORE IN DICK'S STORE PACKING AND REPACKING THE FOOD SUPPLIES FOR THE WEEK.

DICK DOESN'T SHOW THESE PICTURES TO HIS CUSTOMERS; HE'S AFRAID THEY'D WANT ELOISE AND JEAN AS REGULAR CLERKS ALL THE TIME.



CAREFULLY WEIGHING EACH HIKER'S PORTION - THERE WAS 88 POUNDS OF FOOD - FIVE PEOPLE FOR EIGHT DAYS, ONE FOR FOUR DAYS.





THE HIKE BEGINS IN MCCORMICK GAP, AT THE A-T CROSSING OF THE BLUE RIDGE PARKWAY, THREE MILES OR SO SOUTH OF THE PARK. NOTE FOG.



BARBED-WIRE FENCES IN THIS SECTION



JEAN-ER- DIDNT CLEAR ONE OF THOSE BARBED WIRE FENCES ANY TOO WELL-- AND-ER-THERE WAS NEED FOR REPAIRS



SUNDAY MORNING PACKING - SAWMILL RUN LEAN-TO, SOUTHERNMOST IN THE PARK CHAIN

SHENANDOAH PACK TRIP

JULY 1942



REST A BIT; IT'S ALL UP AND THE PACKS ARE HEAVY.  
ON THE TRAIL FROM SAWMILL RUN NORTH



ON THE RIDGE, NORTH OF BROWN'S GAP, LOOKING OUT VIA GAP



ON THE SKYLINE DRIVE IN BLACKROCK GAP, LOOKING SOUTH



FROM THE 3500-FT SUMMIT OF AN UN-NAMED KNOB BETWEEN BIG FLAT AND  
LOFT MOUNTAINS, AND HIGHER THAN EITHER, THERE ARE EXTENSIVE  
VIEWS. NOTE SKYLINE DRIVE, AND MASSANUTTENS IN DISTANCE

SOUTHERN SHENANDOAH PARK

JULY 1942

LUNCH STOP ON THE WEST SLOPE OF BIG FLAT MOUNTAIN, WATCHING RAIN ADVANCE UP THE RAVINE OF BIG RUN. THE PROMINENT MOUNTAIN IN CENTER IS LEWIS PEAK. TO ITS RIGHT (NORTH) IS ROCKY TOP, TO THE SOUTH LEWIS MOUNTAIN AND AUSTIN MOUNTAIN. NOTE THAT THE MASSANUTTENS, WITH HARSHBERGER PEAK PROMINENT, ARE SEEN CLEARER THROUGH THE RAIN CURTAIN THAN THROUGH THE HAZE.



THE POOL IN IVY CREEK



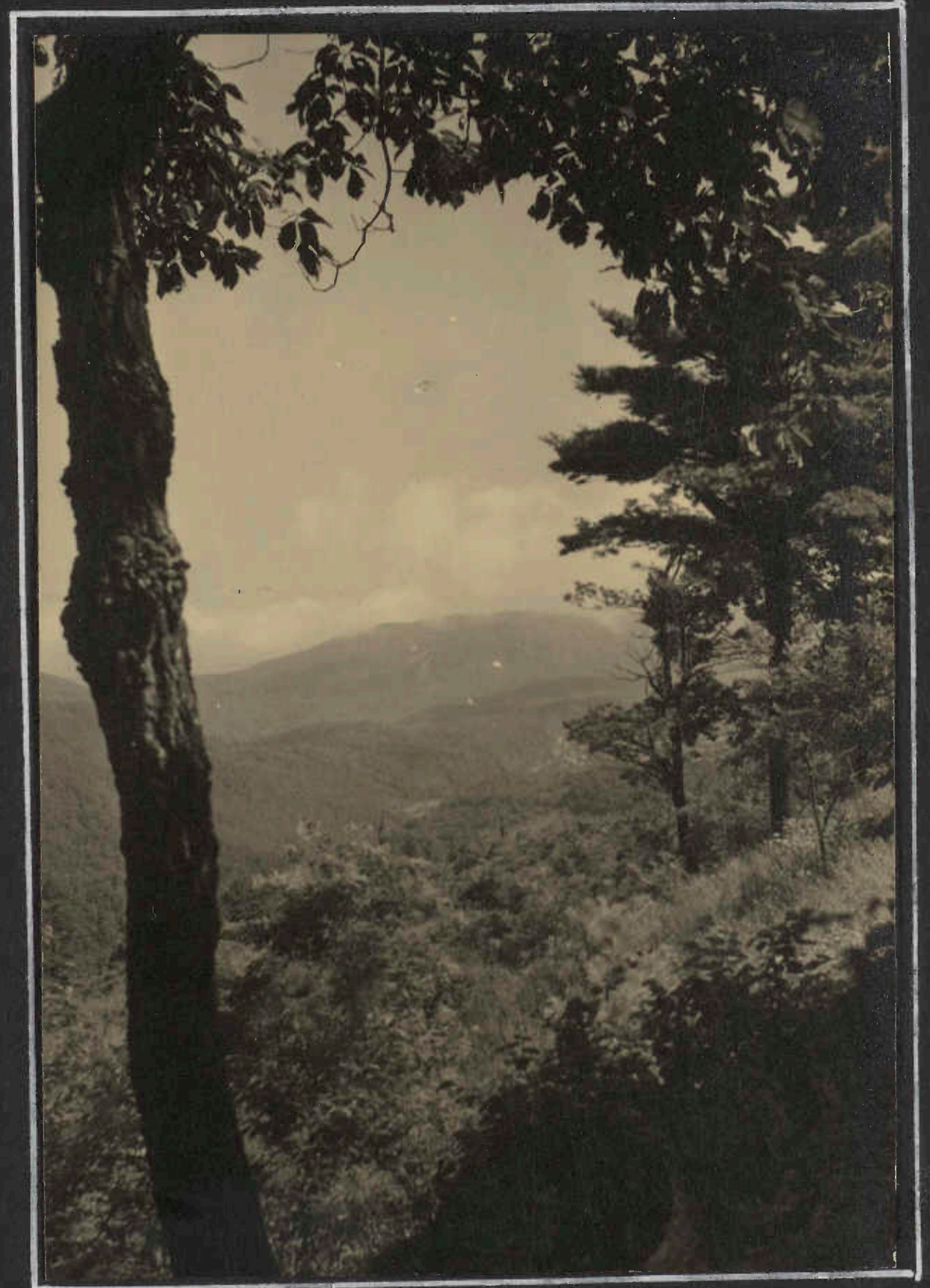




FROM POWELL MOUNTAIN - ROUND TOP (2940) AND HIGH TOP (3585). NOTE LONG RISE OF HIGHTOP - FROM THE EAST



FROM ON THE TRAIL - SOUTH OF SIMMONS GAP



PICTURE WAS TAKEN ON THE  $\uparrow$  SOUTH OF SIMMONS GAP BUT CANNOT IDENTIFY EITHER DIRECTION OR MOUNTAIN NOW. COULDN'T LOCATE HIKING OVER SAME ROUTE A YEAR LATER



WRR

SHENANDOAH PARK  
PACK TRIP

JULY 1942

THE ENTIRE PARTY IN  
POWELL'S GAP- JEAN  
RUSSELL, RUTH LENDERKING,  
GEORGE RUSSELL, ELOISE  
COHEL, OS HEARD, DICK  
ROESSLER.

DICK LEFT THE PARTY  
IN SMITH ROACH GAP,  
TO GO BACK TO WORK.  
HEADING NORTH ON  
THE SKYLINE DRIVE TO  
GET BUS AT SWIFTRUN GAP



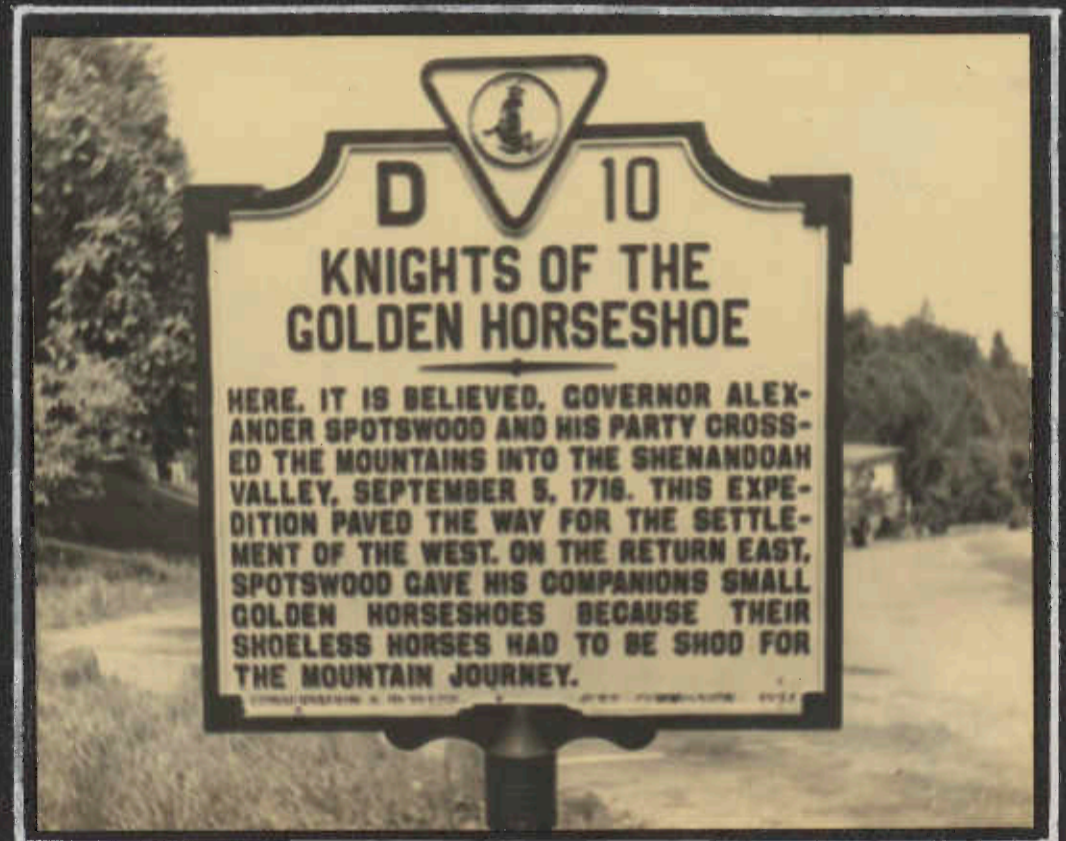
JR



GEORGE, OS, AND  
ELOISE IN THE  
TOWER ON  
HIGH TOP --

AT THE SPOTSWOOD  
TRAIL CROSSING IN  
SWIFT RUN GAP

JR



JR

SHENANDOAH PARK PACK TRIP

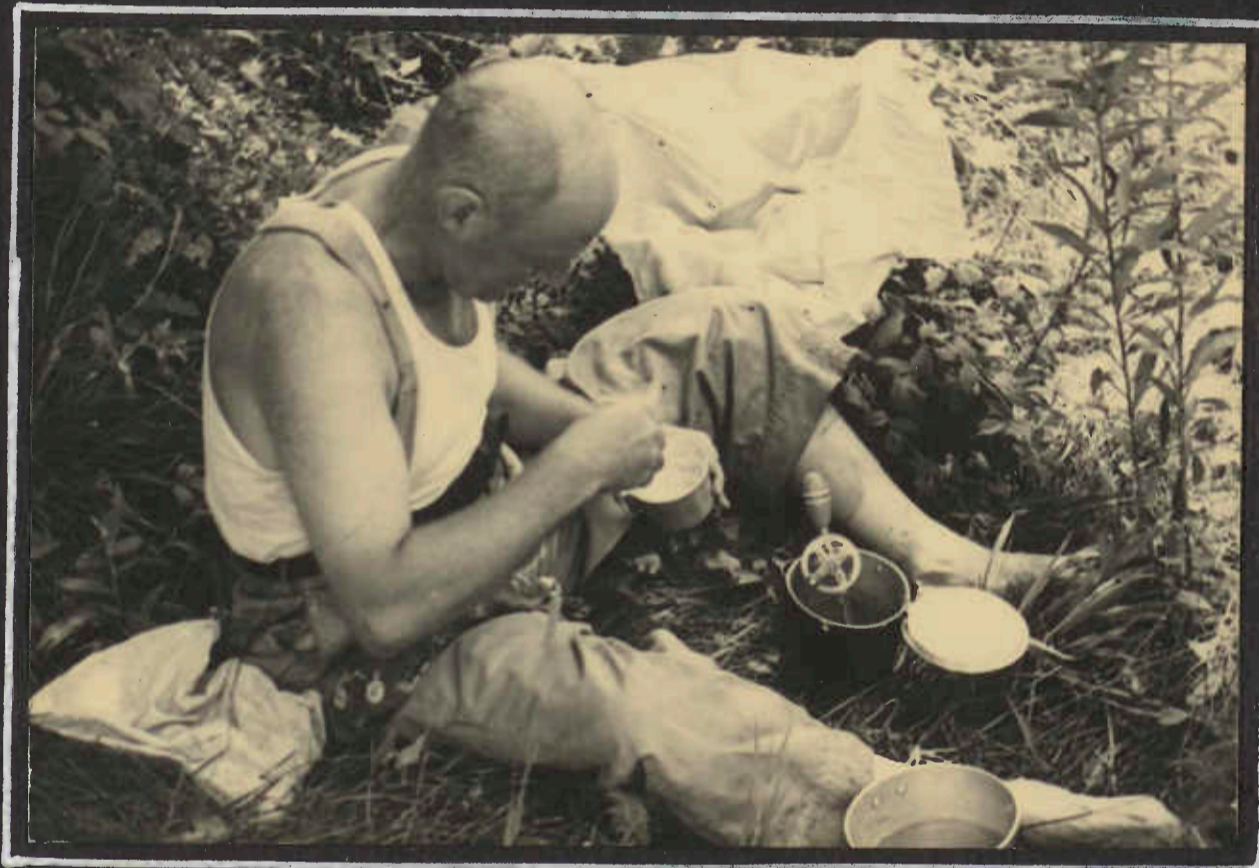
JULY-AUGUST 1942



THEIR COLOR IS PINK -  
LAUNDRY BY THE KITCHEN STOVE



NO. 03 IS NOT TESTING THE SOUP; HE LIKES  
WARM WATER FOR SHAVING.



THE MILK MAN IN THE MODERN DAIRY

AROUND THE KITCHEN



ELOISE ADMIRES (ANTICIPATES)  
A STACK OF HEARD'S "OVER  
THE MOUNTAIN" PANCAKES.  
NOTE THEY DO NOT BEND

SHENANDOAH PARK PACK TRIP - JULY-AUGUST 1942  
LAUNDRIES, PACKS, PANTS PRESSERS, AND THE LIKE



SOCKS AND BOOTS DRY (SLIGHTLY) AT THE FIRE



NEVER COULD GET THE WASHLINE IN KODACHROME



PACKS STAGE ASSEMBLY



TO PRESS SLACKS, PLACE NEATLY ON BUNK, ETC.  
ETC. WAFFLE-WEAVE EFFECT WILL RESULT.

SHENANDOAH PARK PACK TRIP

JULY 25-AUGUST 2, 1942



MODIFIED VERSION OF WATER WAGON



PATCHES AND ATTENTION GIVEN  
INDICATE NEAR END OF THE TRIP

RAIN-HEAP MUCH RAIN-AT  
SOUTH RIVER PICNIC AREA



WRING 'EM OUT -  
SEEMS AS IF THE  
RAIN CAUGHT UP  
WITH A PAIR OF  
TROUSERS

LEAVING PASS MOUNTAIN  
LEAN-TO, FARTHEST NORTH  
ON THE TRIP, TO HEAD  
BACK TO THORNTON GAP  
FOR BUS HOME



OCH

PEN-MAR - DEVILS RACECOURSE - HIGH ROCK

"WESTERN MARYLAND EXCURSION" AUG. 30, 1942



MIRIAM AND GRACE HADN'T MET FOR A LONG TIME!

WRR



ROESSLER - PHOTOGRAPHER

LKE



ELOISE SPORTED A NEW PACK - WHICH WAS MUCH INSPECTED, EXAMINED, TRIED-ON, AND DISCUSSED

WRR



THE DEVIL'S RACECOURSE - STILL DOING BUSINESS AT SAME OLD STAND

WRR



DOWN TOWARDS RAVEN ROCK HOLLOW

WRR

CARROLL COUNTY  
 UNION BRIDGE - BIG PIPE CREEK, ETC.  
 SEPTEMBER 1942



"GETTING ASSEMBLED"



"ROAD CLEAR"

HIKING -  
 RESTING -  
 AT KEY MAR



LEON, ELOISE, OS, AND MIKE

RAIN SET IN --  
 "NOW, LET'S SEE"



OF COURSE, IT'S THE MOUNTAIN WATER WE'RE EMPHASISING  
 FO. NOTE - THE PLACE WAS CLOSED.

Pictures - O.O. Heard

HIKING IN BALTIMORE COUNTY

"FAMILY HILL" - SPARKS - COCKEYSVILLE - ETC.

OCTOBER 10-11, 1942



WMR



WRR

EVERYBODY HERE - EXCEPT PHOTOGRAPHER



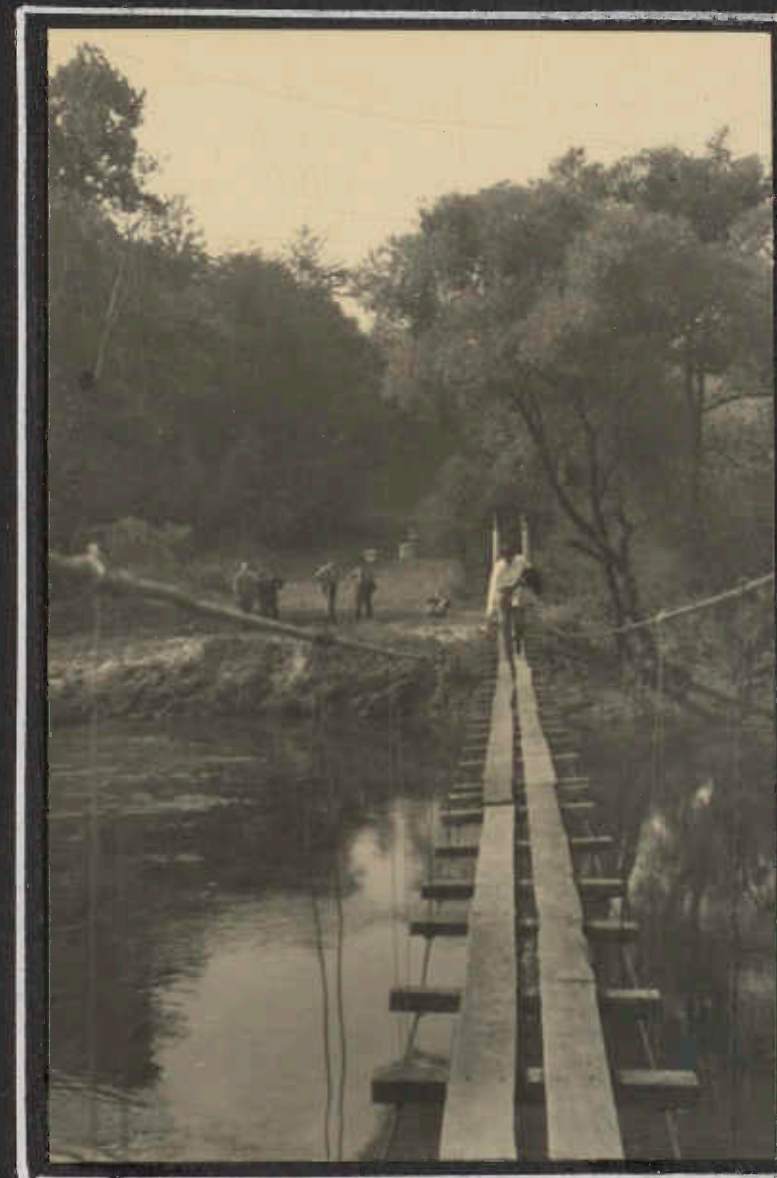
WMR

THE SUNDAY-MORNING GROUP APPEARS WHILE DOROTHY AND FRANCIS - LEADERS AND COOKS OF THE OVERNIGHTERS, ARE STILL WORKING ON THE BREAKFAST.

"A SCENE"



WRR



WRR

FOOT BRIDGE ACROSS THE GUNPOWDER



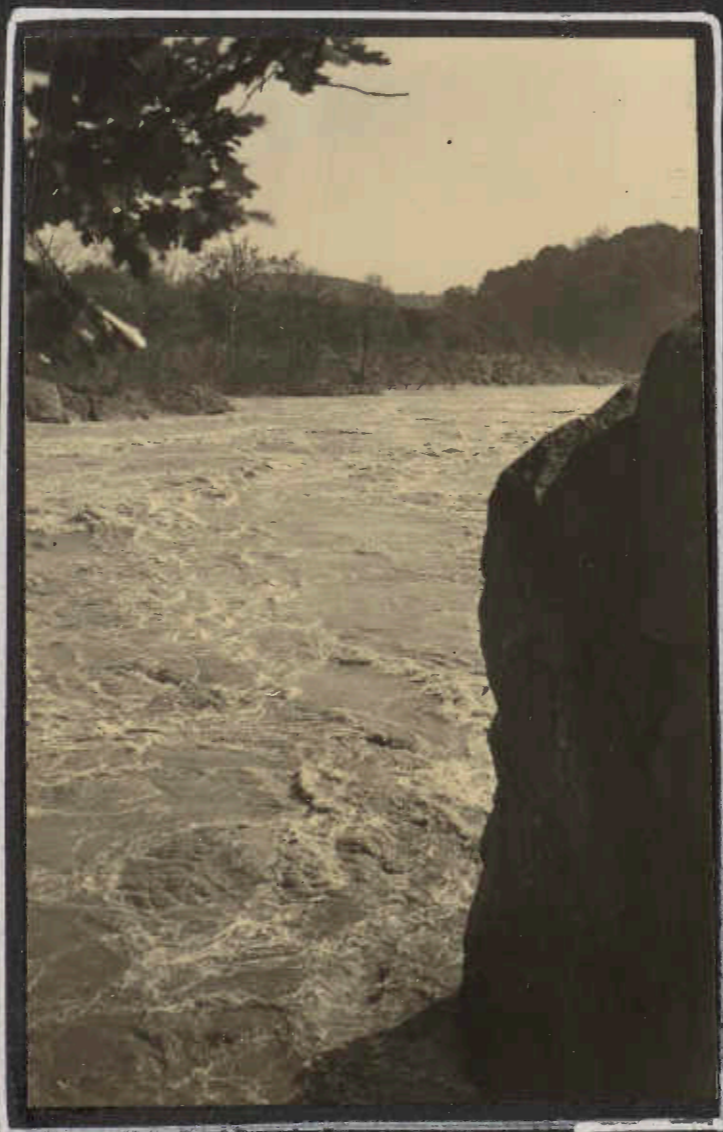
THE POTOMAC RIVER TRIP - DOWNSTREAM FROM GREAT FALLS  
OCTOBER 18, 1942



THE POTOMAC  
WAS IN FLOOD



THIS IS A HEAD-ON VIEW OF GREAT FALLS



SWIRLING WATERS

GREAT FALLS OF THE POTOMAC

OCTOBER 18, 1942



THE TRIP WAS A JOINT ONE WITH THE  
ROCK-CLIMBERS OF THE POTOMAC  
APPALACHIAN TRAIL CLUB OF  
WASHINGTON - BILL KEMPER  
WENT WITH THE ROCK CLIMBERS -  
WHO USED THEIR ROPES TO GET  
ACROSS THE C.+O. CANAL AS  
HERE PICTURED



LOOKING AT THE  
"FALLS" FROM ON  
THE VIRGINIA SIDE



WRECKAGE AND DEBRIS  
QUITE FAR "INLAND"



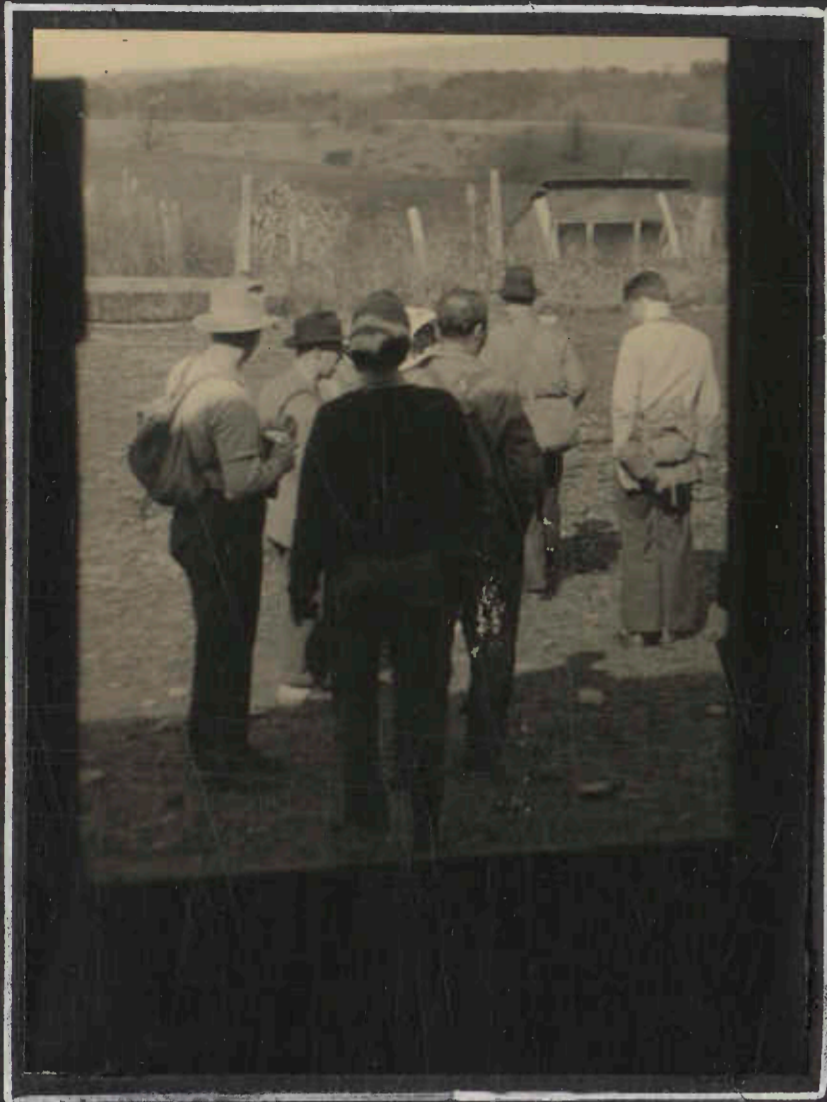
A BIT OF ROCK CLIMBING



"IN THE GORGE"

GRAYSTONE OVERNIGHT

OCTOBER 31 - NOVEMBER 1, 1942



READY TO HIKE

00H



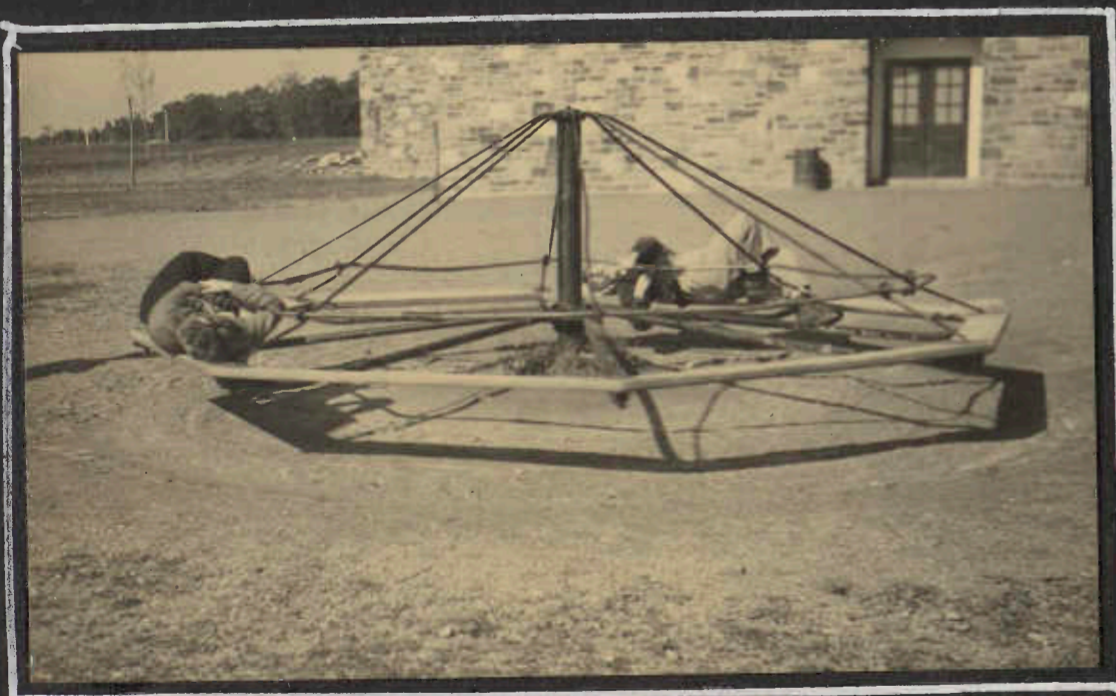
THIS KIND OF COUNTRY

WMR



OS LENDS A HAND

WMR



THE ROUTE WAS ALONG HERE -- SO --

WMR



OVER THE FENCE

00H



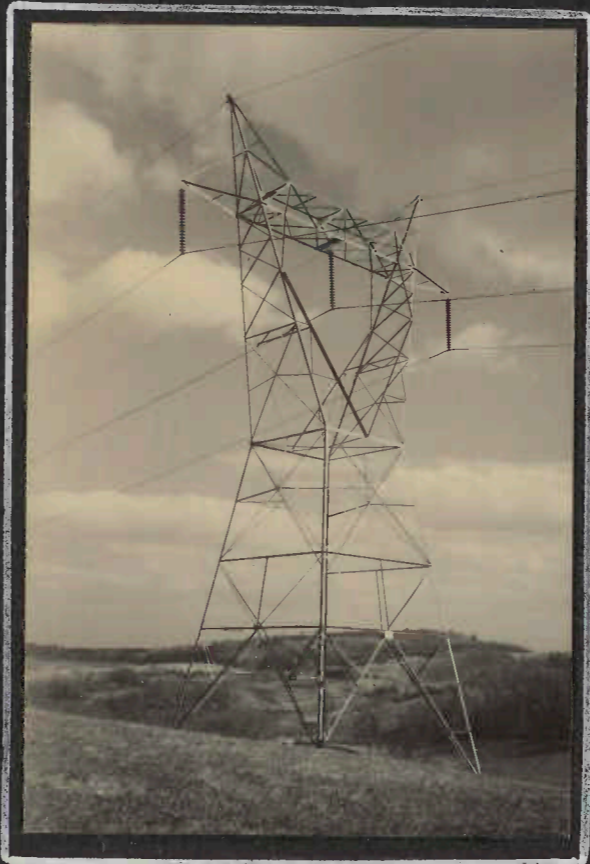
THE PARTY - TED DANFORTH, OS HEARD, DOROTHY AND FRANCIS OLD, DICK ROESSLER, MIKE EMICH - OVERNIGHTERS, AND WINSLOW HARTFORD, SUNDAY HIKER. WINNIE RODEMEYER WAS TRIP LEADER (OVERNIGHT, AND PHOTOGRAPHER.

WMR

PHOTOGRAPHING BALTIMORE COUNTY  
TO LOOK LIKE MOUNTAINS.  
GRAYSTONE TRIP - NOV. 1942



00H



WH



00K

NOT POINTING TO OLD RAG  
FROM NOT ON BIG MEADOWS



WMR



WMR

STEEP SLOPES -  
BLUE SKY - BIG  
WHITE CLOUDS

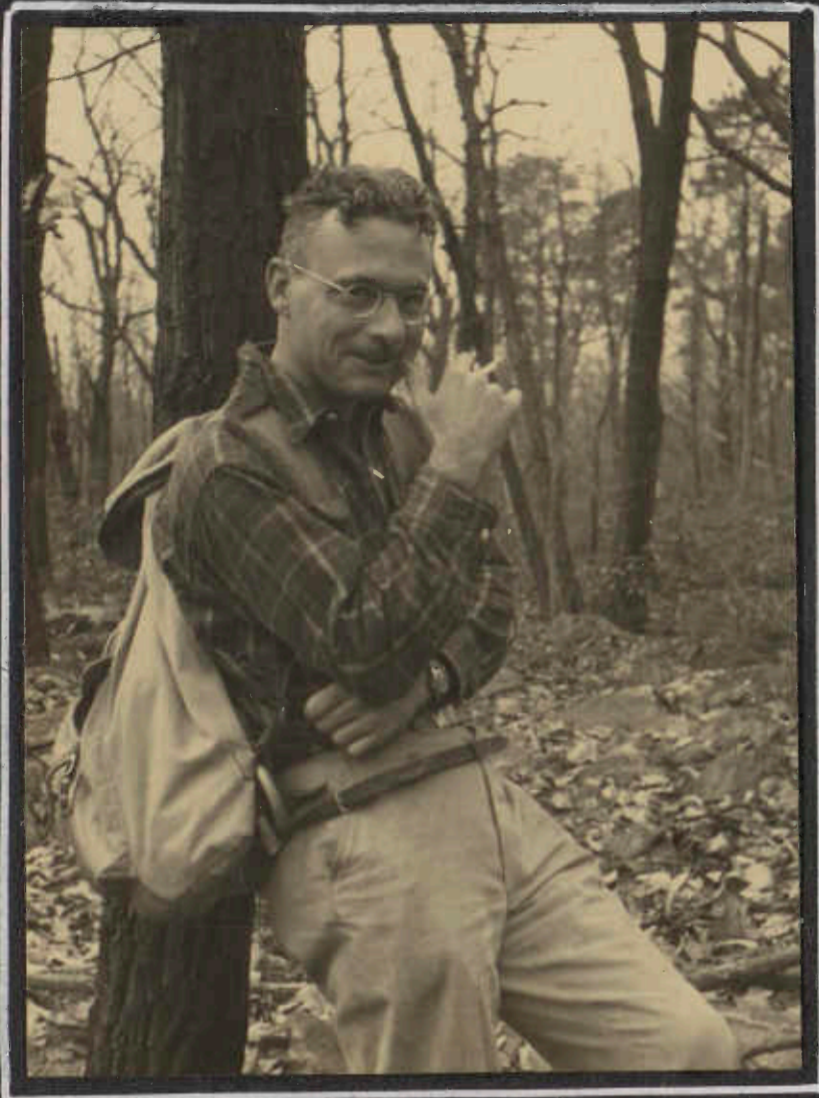


00L

RANGE VIEW SHELTER USED TO HAVE A FENCE.  
THIS WAS NOT IT.

EAGLE MOUNTAIN  
IN THE CATOCTINS

NOVEMBER 8, 1942



JUST TRY TO GET ALLEN TO RUSH



NARRATORS DON'T GET ALL THE ATTENTION



DONALD SMITH LISTENS



JEAN LIKED IT  
OK BY LILLIAN CELMER + ALICE BURTON, TOO



LILLIAN CELMER- OK, CAMERA!  
ELOISE WORRIES



MUST BE AFTER LUNCH

Pictures O.O. Heard

EAGLE MOUNTAIN - CATOCTINS - NOV. 1942



LILLIAN CELMER, ALICE BURTON



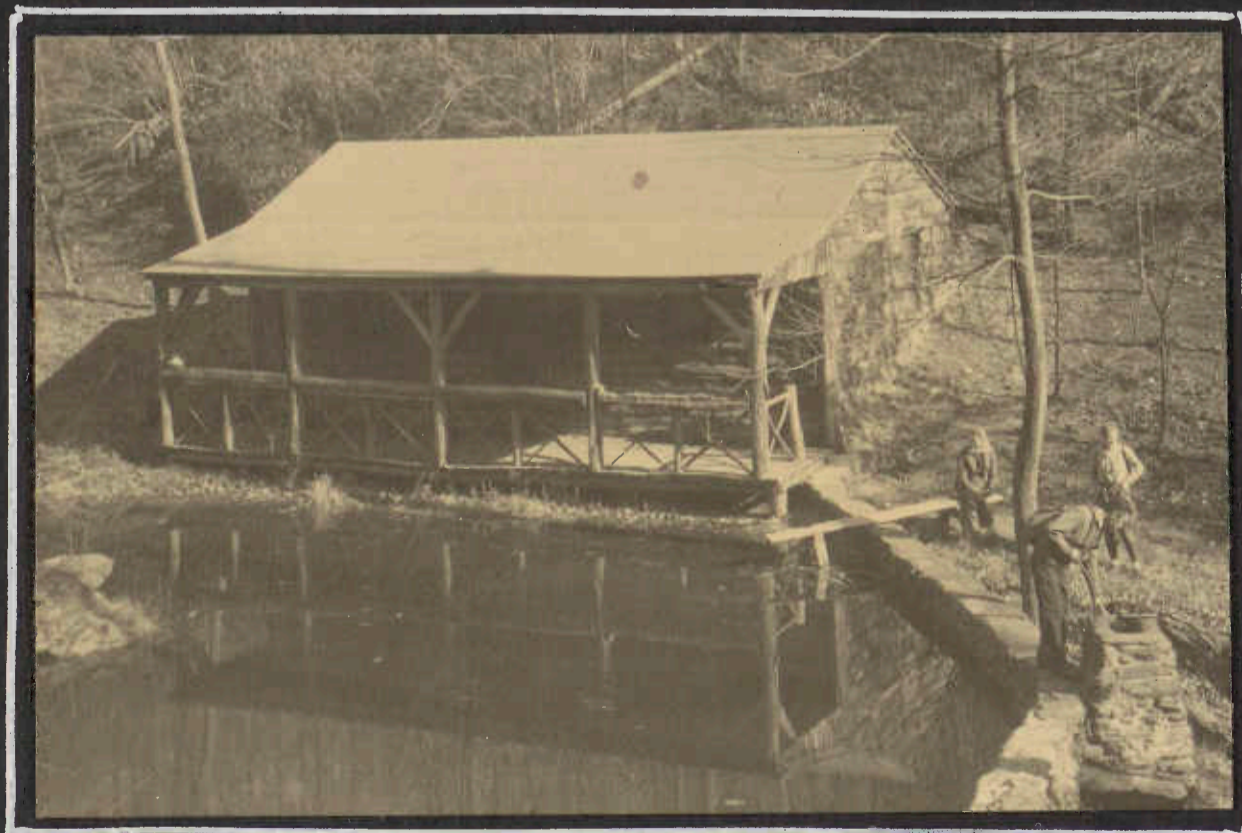
PRINCIPALLY AMELIA BOLANO, SOME GEORGE



ALL ELOISE COCHEL

O. O. HEARD

PADONIA - COCKEYSVILLE - NOVEMBER 22, 1942



ALTHO IN BALTIMORE COUNTY, IT LOOKS LIKE A MOUNTAIN LODGE



ALEC SKETCHES IN THE HIKE ROUTE -  
ALICE WATCHING - -

W. R. R.

GLEN ROCK - PENNSYLVANIA

NOVEMBER 29, 1942



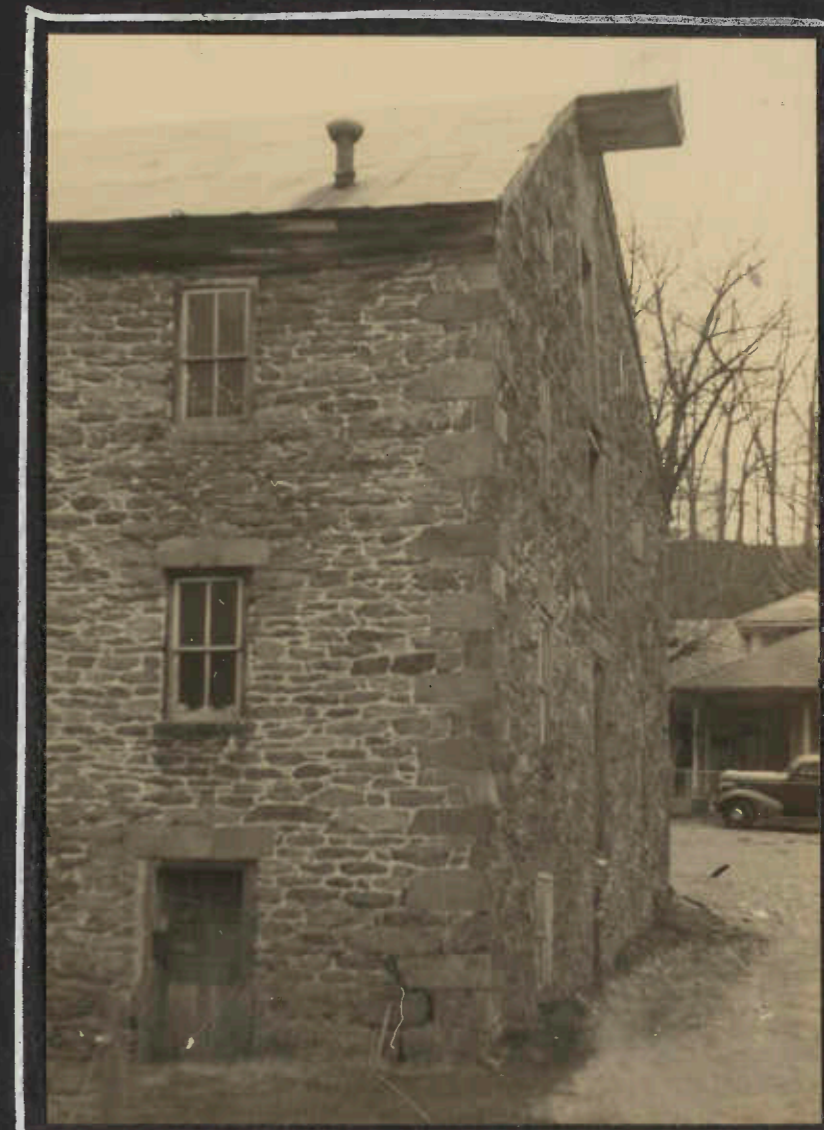
ELOISE WANTS TO SEE

00H



GLEN ROCK BELOW

WRR



STONEMWORK OF THE 1700's

00H



WORTH INVESTIGATING

00H



ROCKVILLE - ROCKVILLE MILL

00H



GLEN ROCK TRIP - NOVEMBER 1942



A COLD DISMAL RAIN AT LUNCH TIME --

00H.

THE CARROLLTON TRIP

A COLD ONE!

DECEMBER 13, 1942



WH



WRR



WH

SNOW SCENES ON THIS TRIP - AND A COLD WIND

THE CARROLLTON TRIP - DECEMBER 1942



STRAW-ROOFED BARN NEAR THE LUNCH SPOT



A SHELTER FROM THE STORMY BLAST--  
WINSLOW AND ALICE CHECK THE MAP AS  
MIRIAM AND RAY COSTA LOOK ON.

NO, WINSLOW DOES NOT  
HAVE WATERWINGS ON  
HIS HAT - THEY ARE  
BACKGROUND ROCKS.  
HE AND RAY COSTA  
ARE NURSING THE  
FIRE ALONG



FLEECE-LINED  
MITTENS HELP  
WARM COLD  
FEET

