

Mountain Club of Maryland -

Photo Album No. 7

Second Half of 1941 -

Pictures by ten photographers - their work for most part  
identified by initials as follows:

L.B. - Lawrence A. Brons

F.C. - Frank Calafiore

J.D. - Jean Douglas

W.H. - Winslow Hartford

O.O.H. - Osborne O. Heard

J.L. - Jastrow Levin

F.O. - Francis Old

W.M.R. - Winnie Rodemeyer

W.R.R. - W.R. Roessler

E.W. - Estelle Wetzler

Assembled by the "Work Squad" of the  
Photographic Group of the Club -  
Completed - June 2, 1943

W.R. Roessler

Chairman

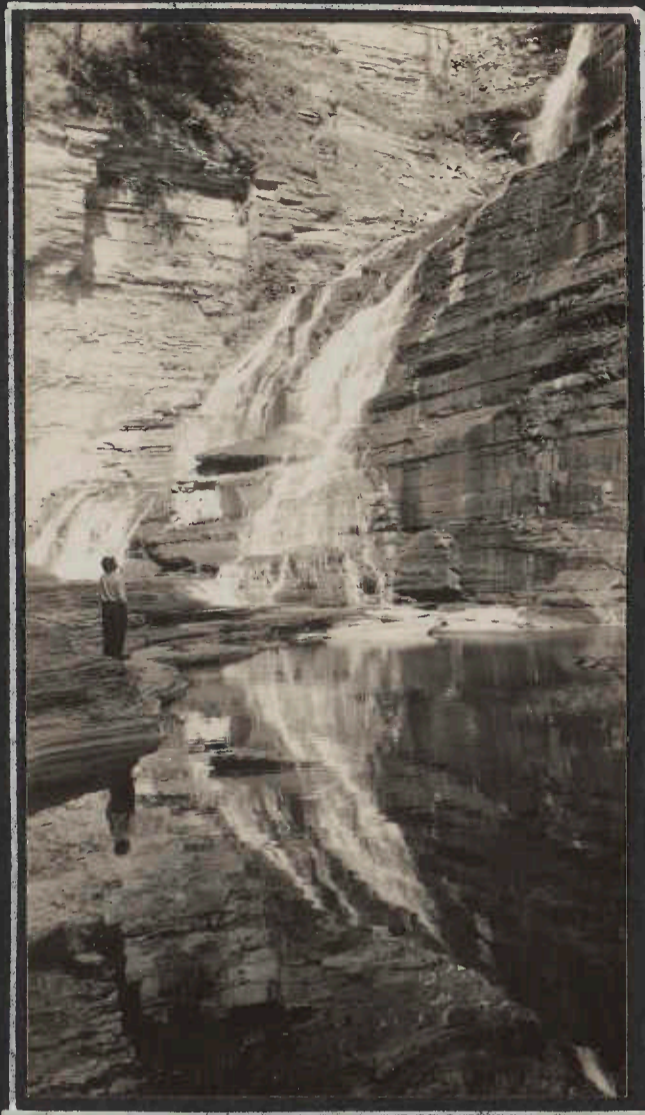
MCM

FOURTH OF JULY TRIP-1941

TAUGHANNOCK FALLS  
NEW YORK



LOOKING OUT OVER LAKE CAYUGA  
AND THE GORGE FROM THE  
SOUTH PINE TRAIL - - - AT  
TAUGHANNOCK -



WES MOORE ADMIRES THE  
125-FT. LUCIFER FALLS IN  
ENFIELD GLEN.

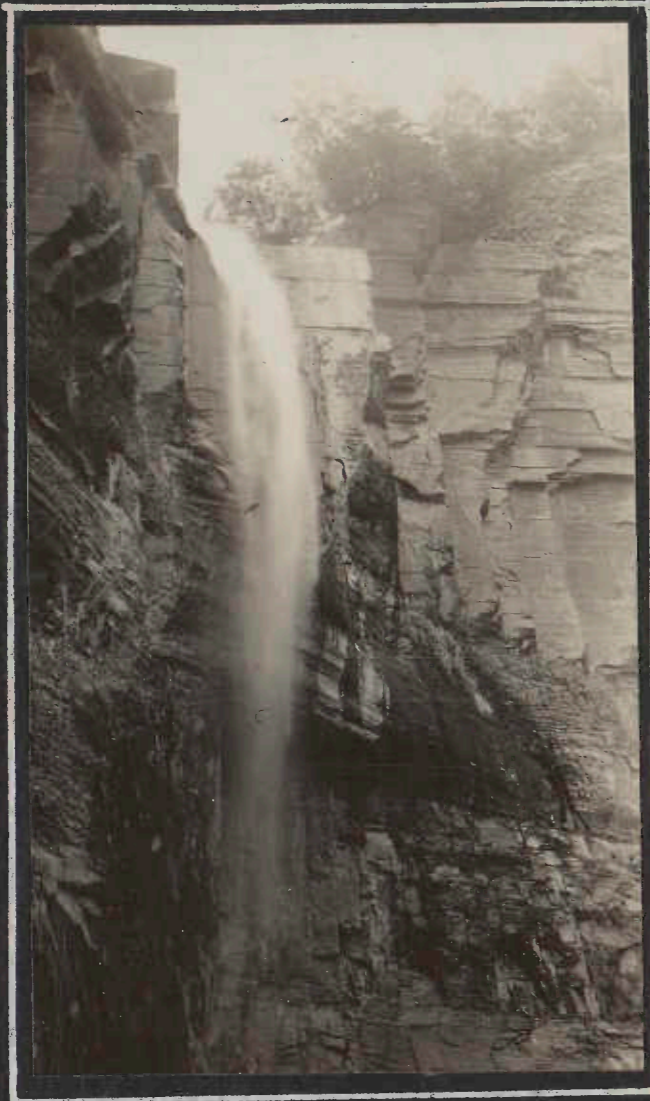


CASCADES AT BUTTERMILK  
FALLS PARK



AT THE BRINK OF TAUGHANNOCK. OLIVER IS  
PREPARING TO DESHOE FOR THE EXPLORATION  
OF THE UPPER GORGE. MARY TAKES A LOOK  
OVER - BUT GINGERLY - WINSLOW IS ENCOURAGINGLY  
ADVISING TO LEAN OVER A LITTLE FARTHER.  
HELEN AND WES LOOK ON.

TAUGHANNOCK FALLS TRIP  
FOURTH OF JULY TRIP  
1941



LOOKING UP AT TAUGHANNOCK  
JUST BEFORE THE ROCKS  
STARTED FALLING - - -

JD



MR. & MRS. TRIP LEADER  
PARADE ALONG THE NORTH RIM  
AT BUTTERMILK. THE PINNACLE  
FORMS THE BACKGROUND

JD



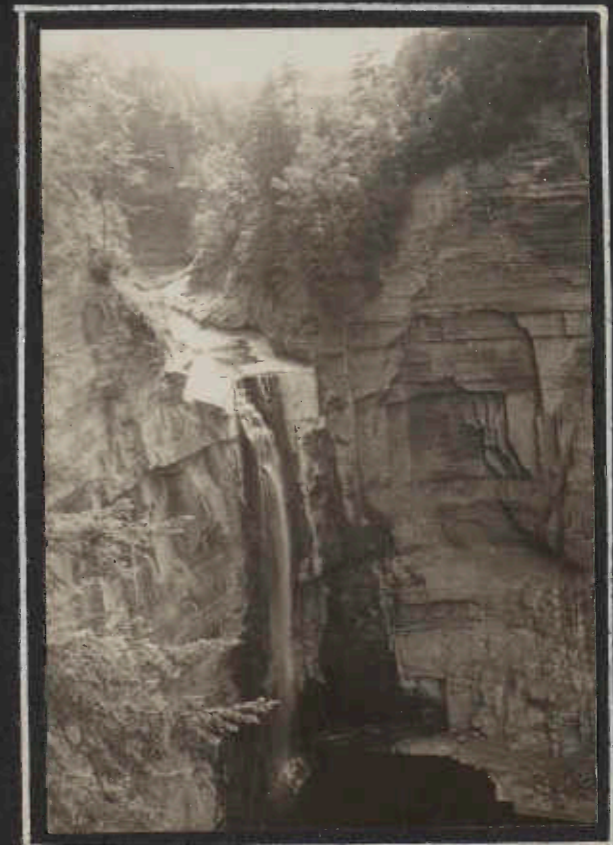
OLIVER LOOKS DOWN INTO THE  
SUNLIT GORGE - - - AT  
BUTTERMILK FALLS -

WH



CASCADES AT  
BUTTERMILK FALLS

WH



TAUGHANNOCK FALLS  
AND THE UPPER GORGE.

WH

THE "OUTLAW" FOURTH OF JULY TRIP  
 GEORGE WASHINGTON NATIONAL FOREST  
 BASED AT WOLF GAP



ED BOETTIGER AND FRED TURNER, PROPERLY ATTICED, LOOK ON AS OS HEARD STIRS THE "CREAM OF SOULS" SOUP - THE SOULS OF THOSE WHO ON EARTH WANTED TO GO TO PAW-PAW. WRR



VIC IS GRIMLY SERIOUS ABOUT OFFICIATING WITH THE TURNER... BUT OBSERVE AMELIA'S COY NONCHALANCE, AND-- LOOKING AT JEAN WE WONDER JUST HOW IT DOD TASTE. WRR



BREAKFAST-A-LA-CAR FC



AMELIA KEEPS ON WORKING WHILE DICK TRIES TO REVIVE THE GASOLINE STOVE FC



DISH WASHING - IN THE RAIN --- EVERYTHING AT WOLF GAP WAS IN THE RAIN WRR

WOLF GAP - AND THE "BIG SCHLOSS" - JULY 5, 1941



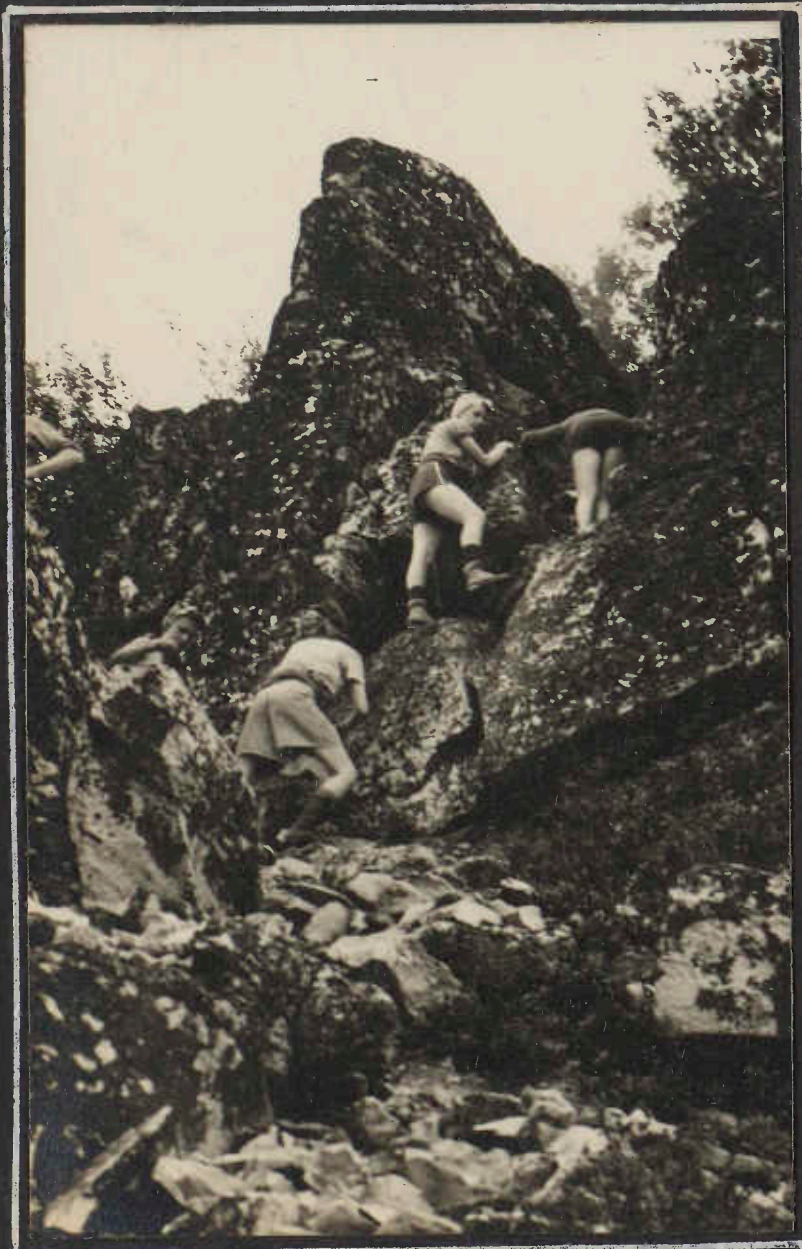
ANNETTA HOLDS UP THE TWO-FACED MIRROR -

W.R.R.



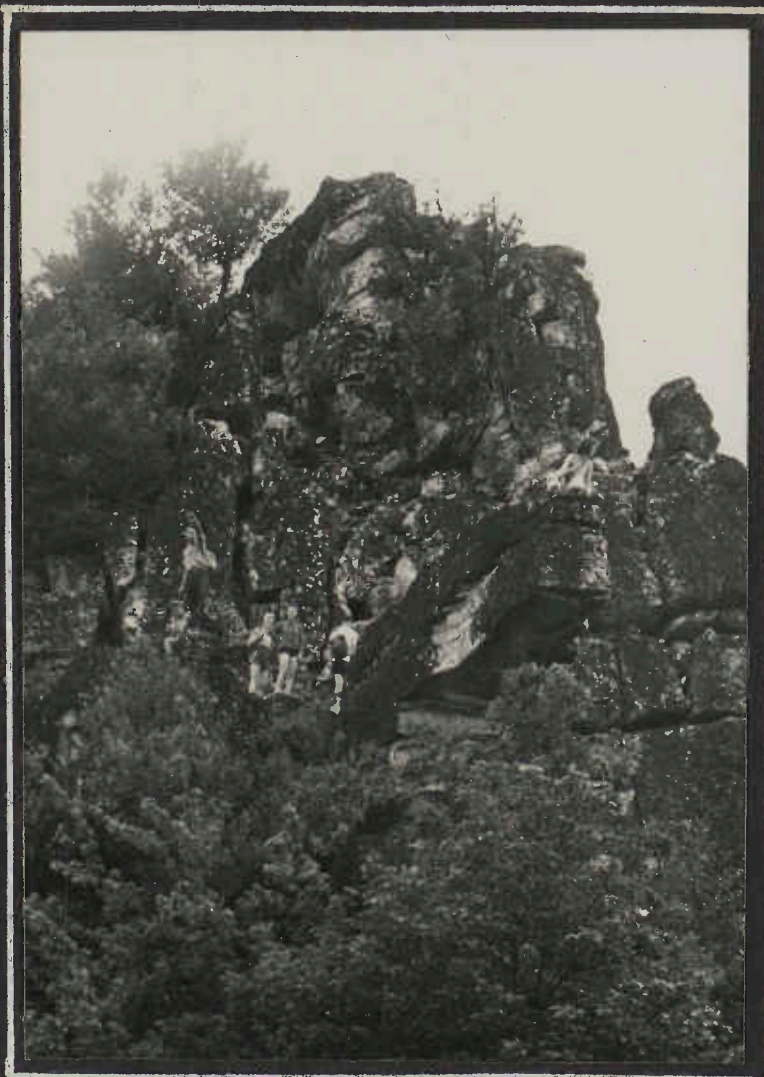
THROUGH THE DAISIES - OR SOMETHING - -

FC



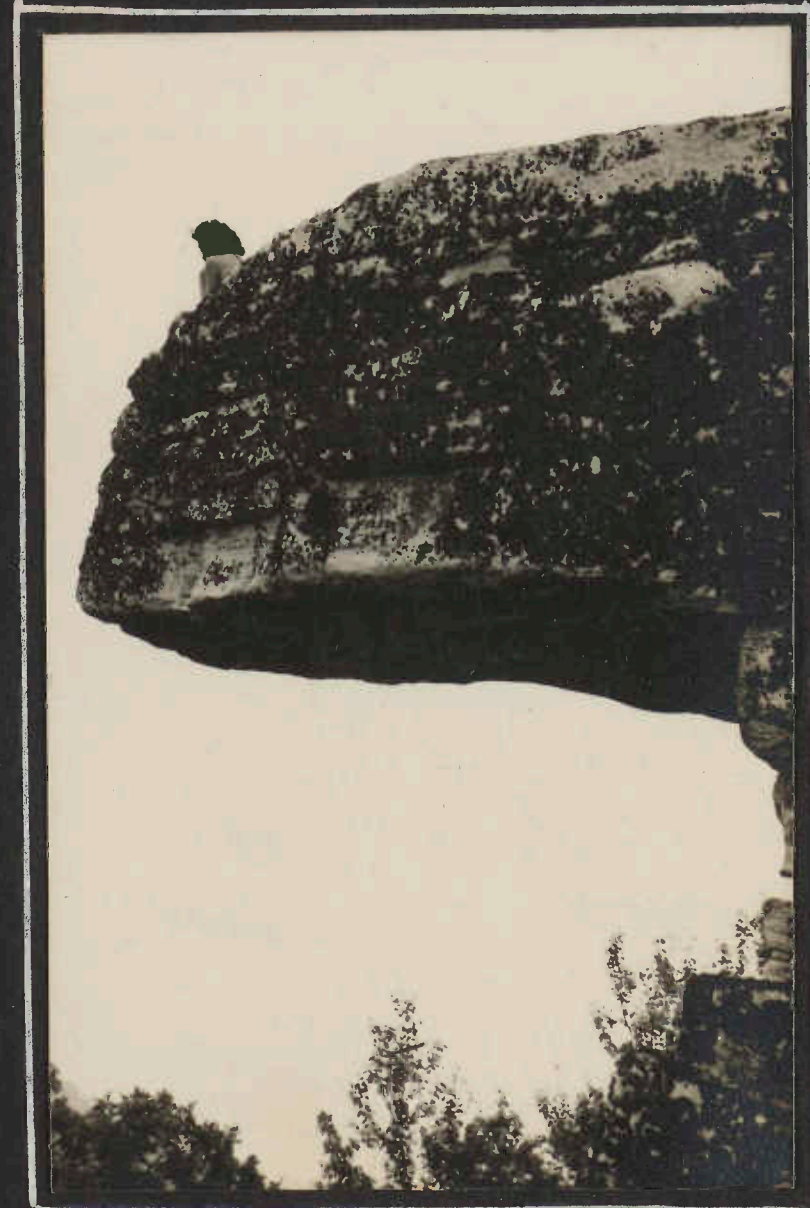
UP THE BIG SCHLOSS

WAR



A HEAD-ON VIEW OF  
"THE BIG SCHLOSS"

WAR



WAGON-TONGUE ROCK

WAR

BIG SCHLOSS TO SUGAR KNOB - JULY 5TH



WRR



THIS IS WHAT WE MEAN WHEN WE SAY THAT IT IS "CLOSING IN OVER THE GAP - ITS THE GAP BETWEEN DEVILS HOLE AND HALF-MOON MOUNTAINS



WRR

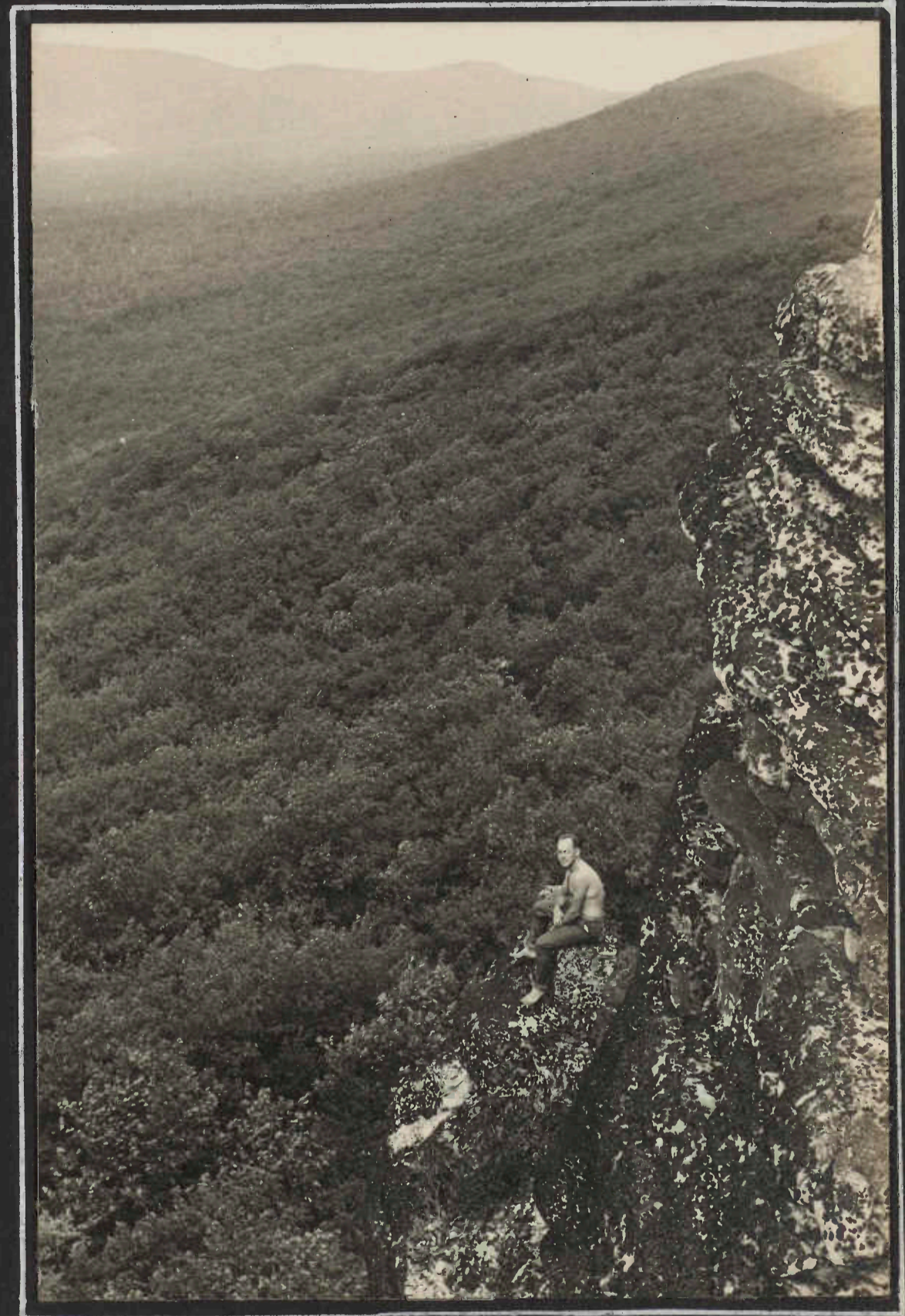


BEA AND ED BOETTIGER STUDY THE MAP - AT SUGAR KNOB SHELTER



OOH

SOME PEOPLE WENT TO THE TABLE --- AGAIN AND AGAIN!

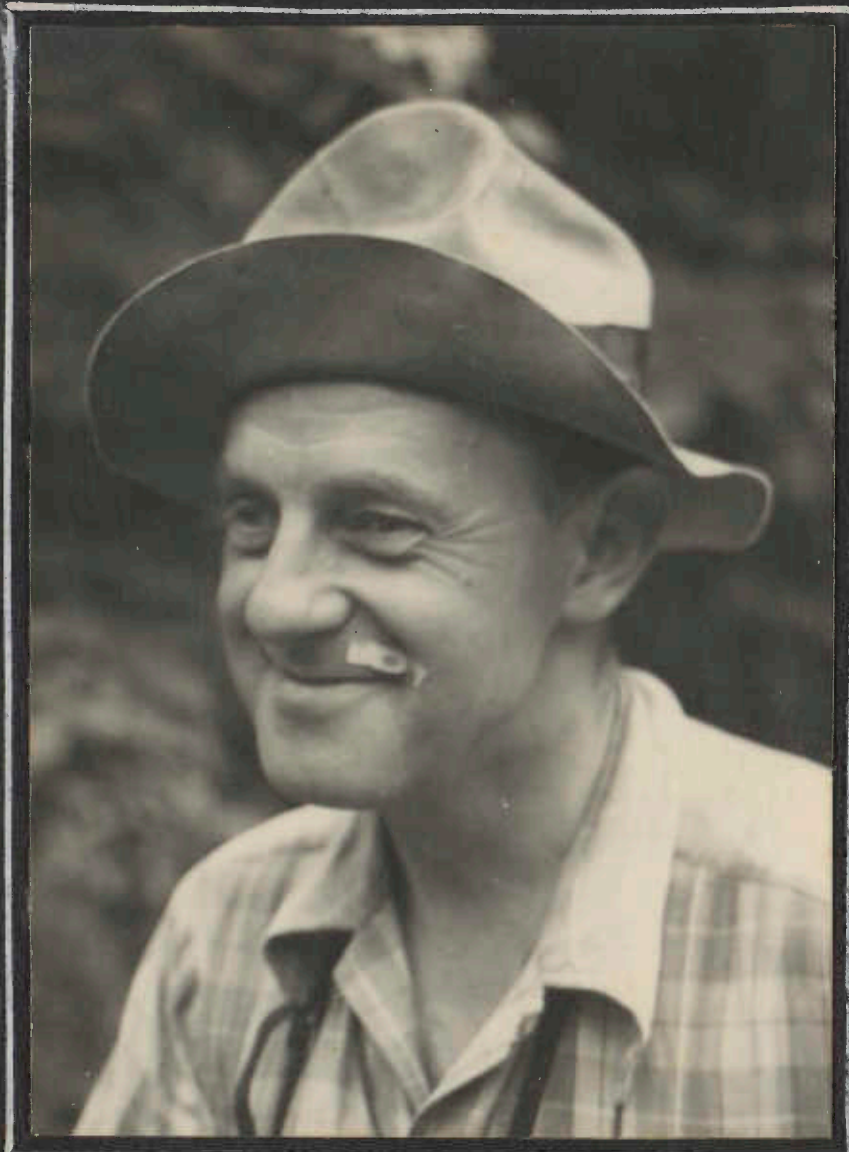


FC

ON THE BIG SCHLOSS VIC. AND A TRACKLESS FOREST-

SUGAR KNOB  
MILL MOUNTAIN  
HALF MOON MOUNTAIN

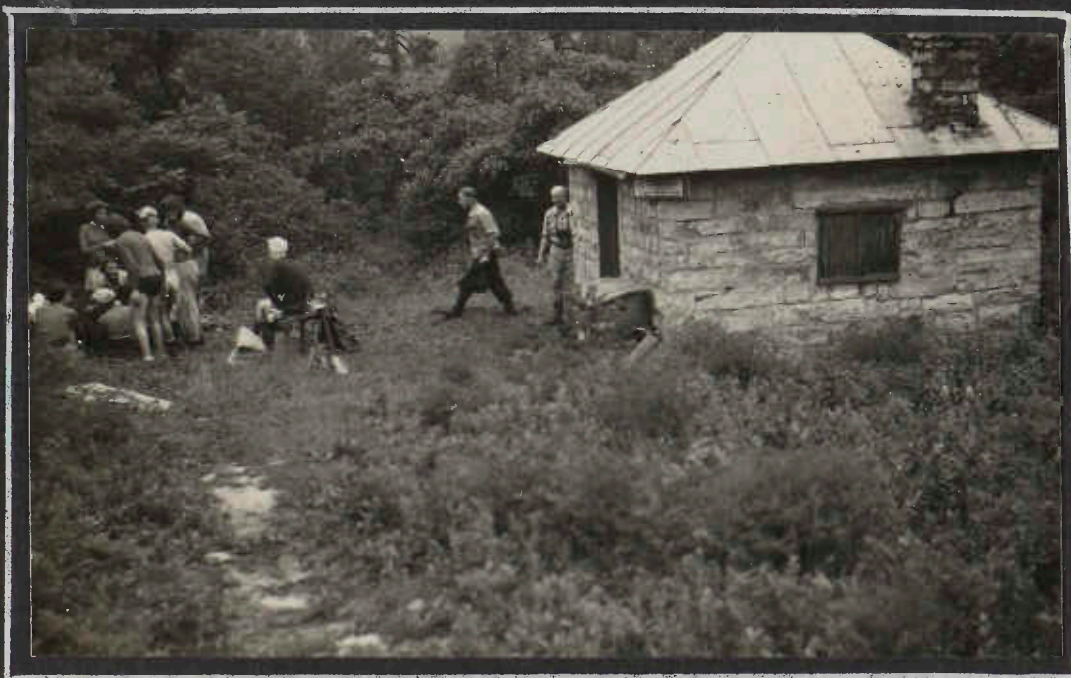
JULY 5-6, 1941



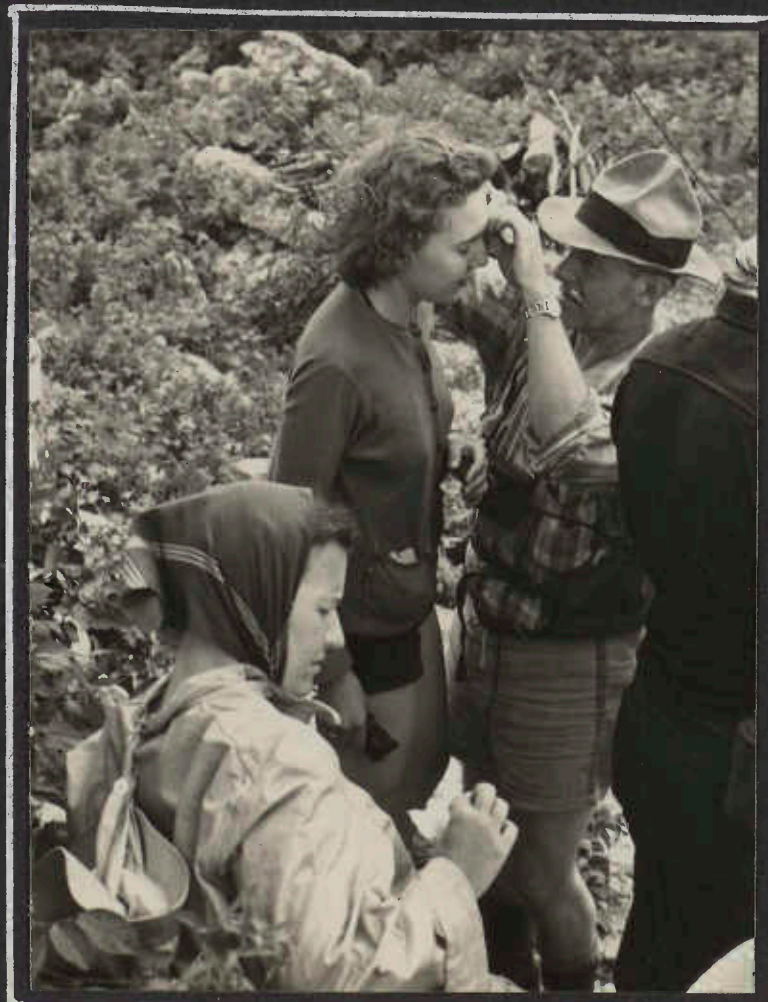
WRR  
HIS EMINENCE, OS HEARD  
BARON OF POLE STEEPLE,  
COMMANDANT, MCM FOOT CAVALRY.



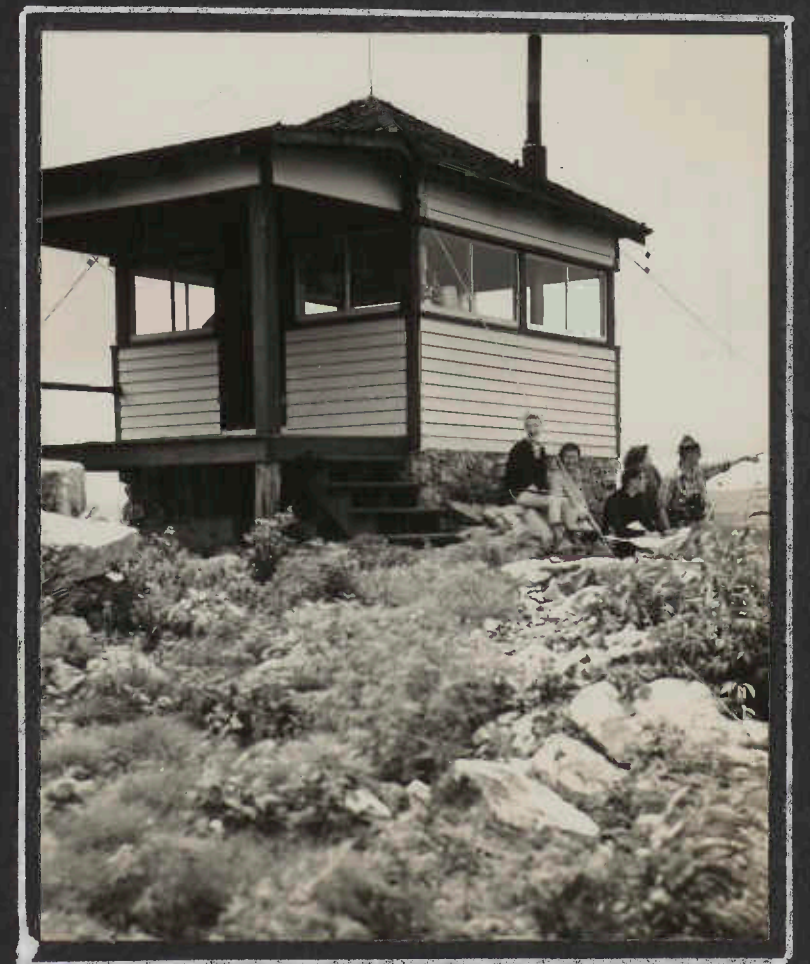
OOH  
THE GROUP: FRONTROW- FRANK CALAFIORE, DOROTHY COCHEL, GEORGE AND JEAN RUSSELL, AMELIA BOLAND, FRED TURNER, BEATRICE BOETTIGER. STANDING- FRANCIS OLD, DOROTHY MOORE, DICK ROESSLER, ESTELLE WETZLER, ELOISE COCHEL, VIC MONKE, ED BOETTIGER. UP ABOVE- ANNETTA HEARD. OS HEARD WAS THE PHOTOGRAPHER



WRR  
SUGAR KNOB SHELTER



WRR  
ESTELLE HAD (AND WAS - AND IS) AN EYEFULL. ELOISE WAS EXAMINING SOME POISON IVY.



WRR  
THE "LOOKOUT" ON  
HALF MOON MOUNTAIN.



THE WEATHER BREAK

NORTH ALONG THE  
RIDGE OF NORTH  
MOUNTAIN. THAT  
BULK OVER FAR  
LEFT IS CACAPON  
MOUNTAIN.



THE HEAVY CLOUDS  
OF THE "BAD  
WEATHER" ROLL  
AWAY TO THE  
SOUTH.



THE CLOUDS LIFT  
OVER TIBBETT  
KNOB - FAR  
CENTER - FOR  
JUST A MOMENT

HALF MOON MOUNTAIN - JULY 6, 1941



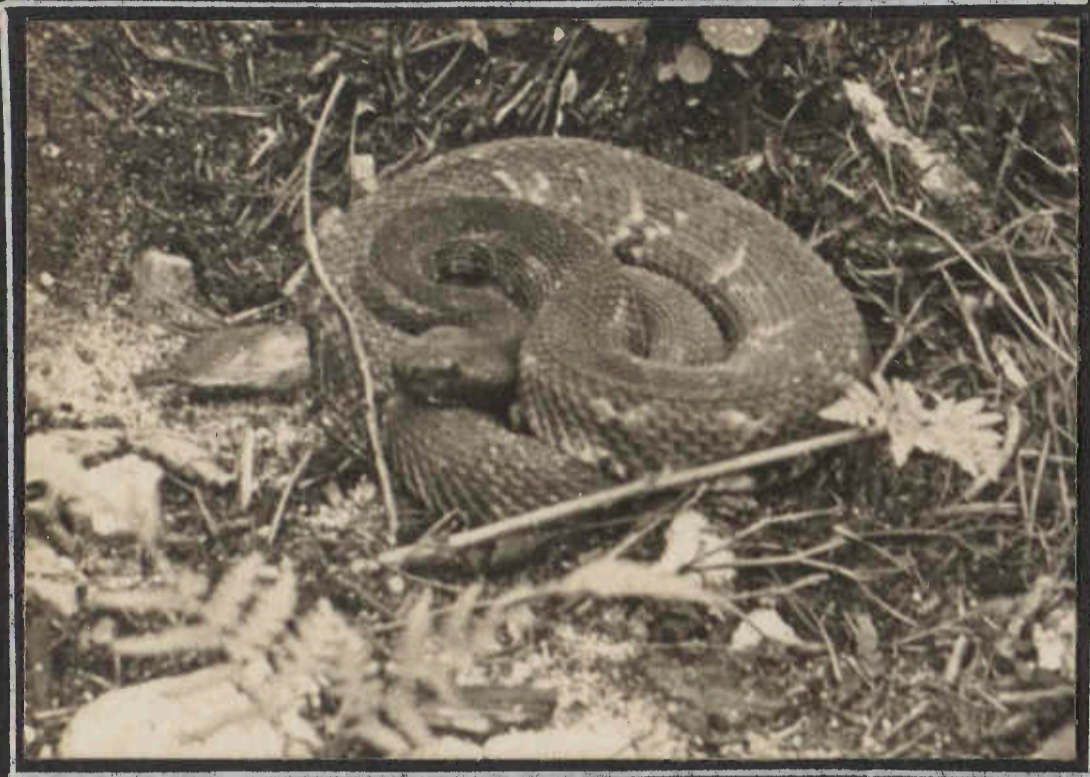
AN "INFRA-RED" TO THE NORTH



DEVILS HOLE MOUNTAIN IS THE RIDGE AT THE  
RIGHT - THE DEVILS HOLE VALLEY - AND THE  
CLOUDS AGAIN OVER TIBBETT KNOB - LEFT

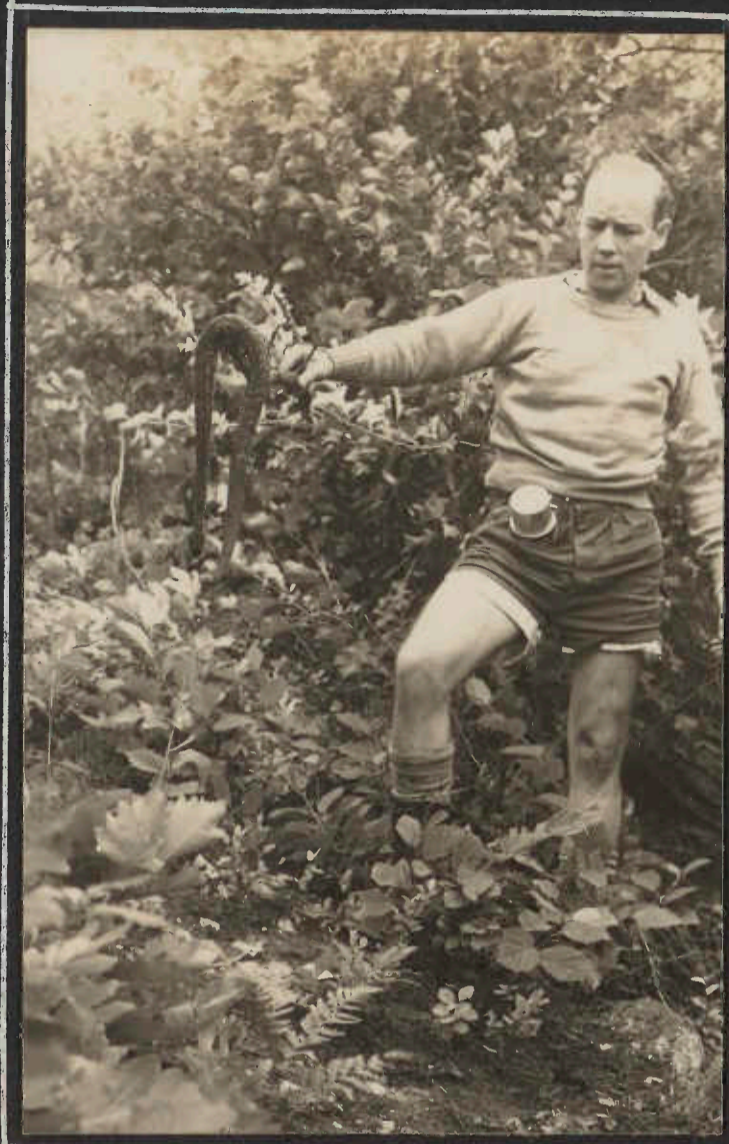


HALF MOON MOUNTAIN - JULY 6TH



THE LATE GUARDIAN OF THE TRAIL - HE WASN'T "LATE" WHEN FRANK PHOTOGRAPHED -

FC



ED HOLDS UP THE LATE - HE HOPES - RATTLESNAKE

FC



BELIEVE IT OR NOT - THEY'RE WATCHING THE RATTLER - LOSE HIS HEAD.

FC



OOH

ED AND AMELIA CARRY THE RATTLESNAKE'S REMAINS DOWN THE MOUNTAIN.

OH YES, THAT'S ED'S CUSTOMARY HIKING ATTIRE IN THAT CLIMATE

←

WESTWARD FROM HALF MOON MOUNTAIN

→



OOH

CANOE TRIP  
MONOCACY RIVER  
JULY 20, 1941



FO  
THE "SAMANTHA Q PAUGH PAUGH", BRUNS, MASTER,  
OOZES DOWN THE MONOCACY



LB



LB

"SUGAR LOAF"  
MOUNTAIN  
RISES ABOVE  
THE WATERS



ESTELLE LOOKS AFT

LB



MIRIAM LOOKS INNOCENT

LB



BOTH LOOK TO LUNCH

FO

JOHN PAUL JONES - JULY 26-27, 1941  
GUESTS OF YORK HIKING CLUB



WRR

SOME PEOPLE CAN SLEEP IN POLAR CUB  
BAGS - EVEN IN JULY -



WRR

GRACE WARD, RITA MAY BAKER, AND RUBY BERE  
SPEND TIME WITH THE ALBUM



WRR

THERE'S ALWAYS SOME KIND SOUL  
TO SWEEP UP -



WRR

JEAN -



WRR

SOME PEOPLE MAKE A LAZY LIFE OF READING -

"JOHN PAUL JONES"



WNR

FRED PLAYS ON CONFIDENTLY, BUT BILL SHOWS UNCERTAINTY AND OS SOME CONCERN -



WNR

SIDE VIEW



WRR

ORCHESTRA AND CHOIR - RITA "UKES", BILL ARNOLD IS THE FLAUTIST, FRED WARD, ACCORDION, DICK KING, TROMBONE. ELOISE - GRACE - OLIVER - SING -

ON THE SUSQUEHANNA



WRR

BILL GETS THE RANCE



WAR

DICK KING MAKES THE TROMBONE PERFORM VALIANTLY



WRR

GEORGE WILCOX INVESTIGATES THE TUNE

"JOHN PAUL JONES"

JULY 26-27, 1941



WRR

ELSIE TAKES OVER



FO

WATERMELON PARTY -



FO

SOME PEOPLE LOOK UP - GEORGE  
LOOKS "SO WHAT?"

MCM - Car Assignments  
RETURN TRIP

Bill Kempster  
 that makes - Hank Langer  
 Steve Cook - George Wilson

Alec Kennedy  
 that makes - Margaret Frank  
 Jim McGill - Lattie Kelle

De Heard  
 that makes - Steve Cook  
 Rita Cook - Victor Cook  
 Ed Thompson

Fred Ward  
 that makes

George Russell  
 that makes - George Wilson  
 that makes

Ruby Reed  
 that makes - George Wilson  
 that makes

004

IT SEEMS THAT ALEC KENNEDY MADE  
UP THE CAR ASSIGNMENTS!

"ALL NIGHT MOONLIGHT" HIKE  
SHENANDOAH PARK  
AUGUST 2-3, 1941



WM

"SUNRISE" - OLD SOL BREAKS  
FORTH AT LAST - -



WH

DAWN - ON MARY'S ROCK



WMR

DOROTHY -



WMR

AT THE HAWKSBILL TRAIL -

FRANK CALAFIORE, RUBY BERE, VERA PENNINGTON, VIC MONKE.  
HENRI SIEGEL, DOROTHY COCHEL, AMELIA BOLAND, ED. MONKE



WMR

"HAWKSBILL" LOOKS LIKE JUST  
ANOTHER HILL FROM HERE.

THE BEACH HIKE - PLUM POINT - AUGUST 23-24



THE EATING PLACE WAS, AS USUAL, AT THE BASE OF THE CLIFF



ZAN AND JASTROW LEVIN



ELOISE



LOOK! THE MCM COFFEE POT

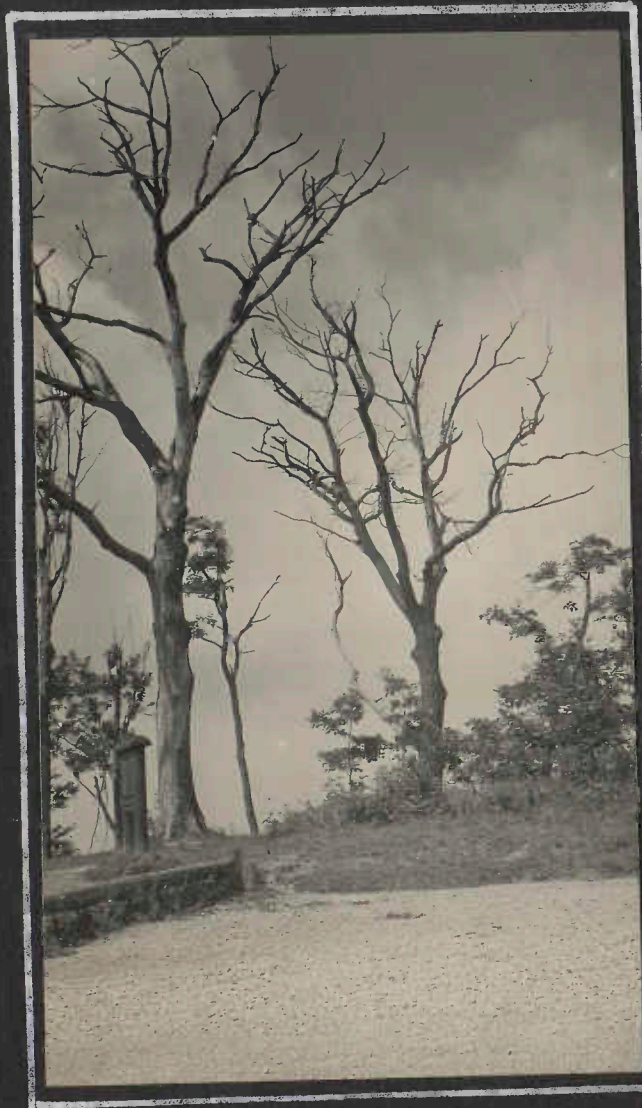


FERRYING MATERIEL BACK TO DARE'S WHARF



HARRY MOORE "OBSERVES" AS JEAN AND DICK CARRYING ON AN OLD OLD CUSTOM.

MONONGAHELA NATIONAL FOREST  
LABOR DAY PERIOD - 1941  
ANOTHER UNSCHEDULED TRIP - -



DEAD CHESTNUT ON BICKLE KNOB

FC



WRR

BEAR HEAVEN IS SOME 225 MILES OUT -



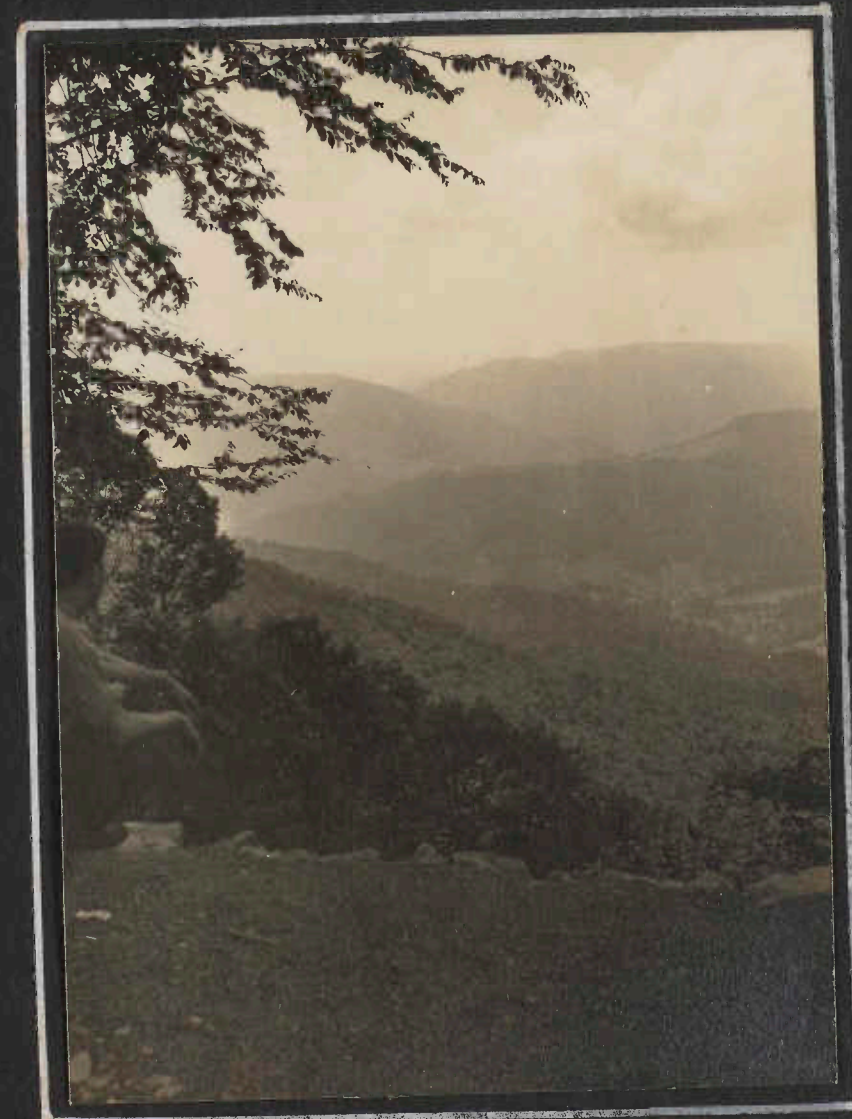
WRR

FIRST NIGHT CAMP AT BEAR HEAVEN  
DOROTHY AND AMELIA GET BREAKFAST FOR THE MENFOLK.  
LOOK AT THOSE LUNCH BAGS!



WRR

SCENE ON BICKLE KNOB



WRR

VIEW WESTWARD FROM BICKLE KNOB



FC

FRANK'S CONESTOGA WAGON



MONONGAHELA NATIONAL FOREST  
WEST VIRGINIA



BICKLE KNOB - 4000 FEET, PLUS  
W.R.R



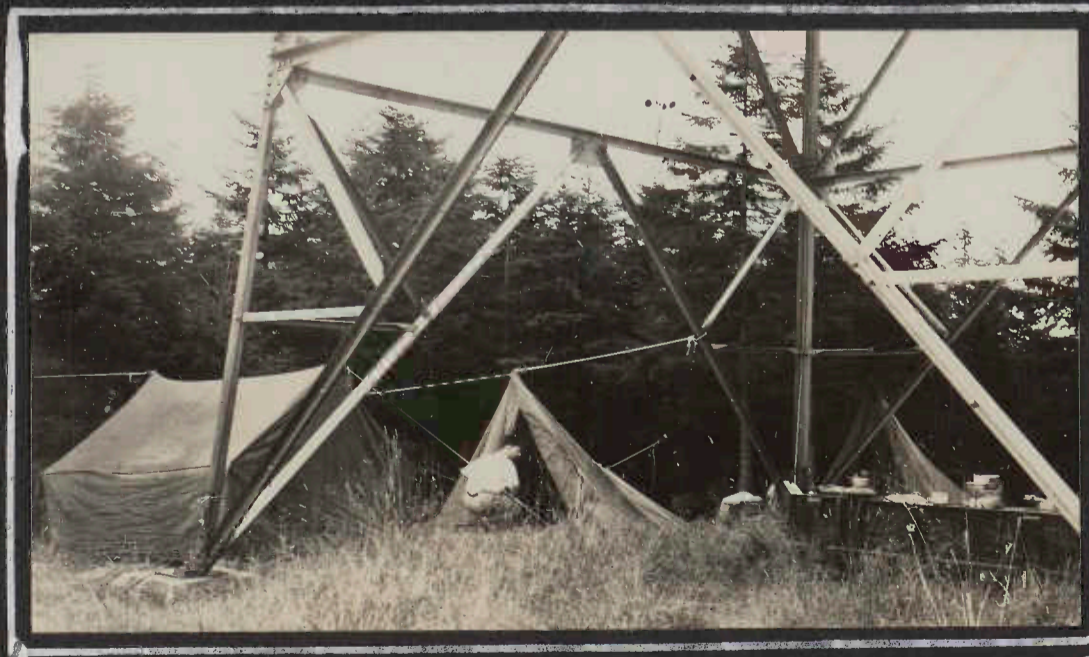
THE GAUDINEER TOWER  
W.R.R



GAUDINEER'S PINES - DOROTHY CALLS FOR FRANK  
F.C



THE ALLEGHENIES NEAR ELKINS  
W.R.R



SECOND NIGHT CAMP - AT GAUDINEER TOWER  
L.B



MUST BE AT THE KITCHEN →  
L.B

MONONGAHELA FOREST TRIP



WMR

AMELIA PHOTOGRAPHS - - -

GAUDINEER  
CAMP SCENES -

THEN ON THAT  
LONG ROAD TO  
GLADY.



WMR

DOROTHY CHIEF-COOKING - - -



WMR

AND ELOISE DISHWASHING --  
SHE SPLASHES MIGHTILY - THERE  
FORE HIGH PERCH TO KEEP FEET DRY.



DC

IT WASN'T THE RIGHT ROAD!



WRR

PHARIS KNOB, SPRUCE KNOB, GATEWOOD TOWER  
FROM FAR AWAY -- ON THAT ROAD TO GLADY --

LOOKING FOR CHEAT RIVER FALLS - MONONGAHELA FOREST



GLADY, WEST VIRGINIA -  
ON THE "LONGEST" ROAD

W.M.R.

LUNCH -  
JUST BEYOND  
GLADY →



FC

THE SHORTEST ROUTE →



WELL, IS THERE ANY POINT TO IT?

FC



SHAVERS FORK - CHEAT RIVER

W.M.R.

DICK "LECTURES" ON THE ADVISABILITY  
OF TURNING BACK - FRANK HAS  
ALREADY "GIVEN UP" GOING AROUND  
ONE MORE BEND.

TRIP REGISTER: FRANK CALAFIORE, DOROTHY COCHEL,  
AMELIA BOLAND, FRED TURNER, WINNIE RODEMEYER,  
LAWRENCE AND MIRIAM BRUNS, ELOISE COCHEL,  
DOROTHY WATSON, DICK ROESSLER.

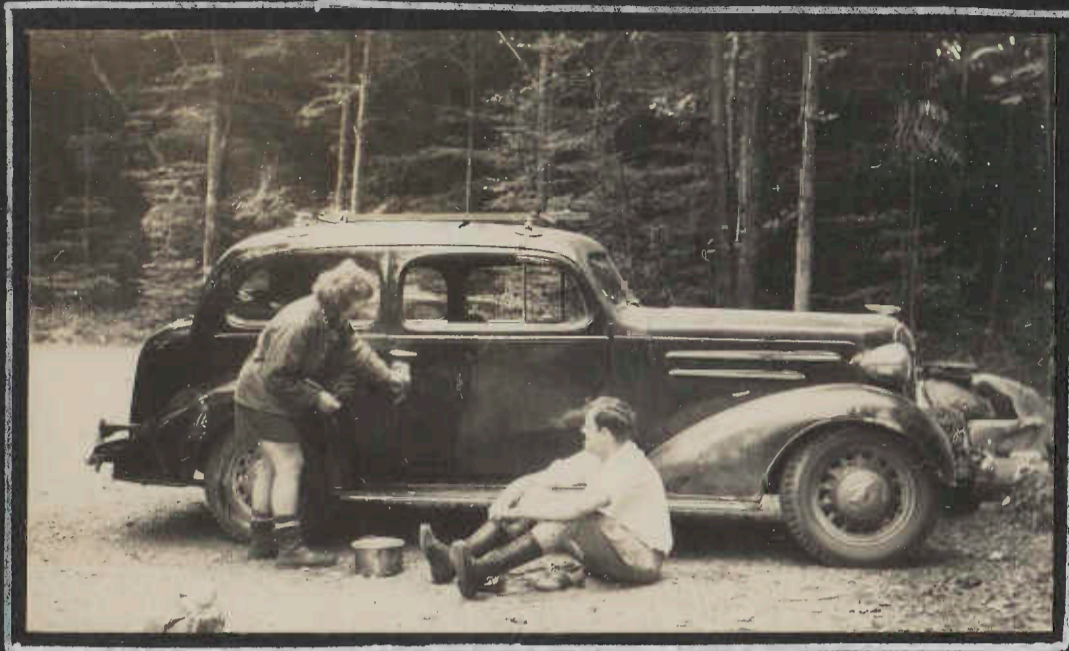


F.C.



W.M.R.

LABOR DAY TRIP TO THE MONONGAHELA FOREST- 1941



LB

LAST MORNING, BACK AT BEAR HEAVEN - LARRY WATCHES ELOISE WASH HIS CAR-

THE MILL AT ROARING CREEK WAS AN ATTRACTION



WRR



LB

WINNIE - AMELIA - ELOISE - TAKE IN ----- THE VIEW

HIGHWAY 33 - BETWEEN HARMON AND MOUTH OF SENECA



LB



LB

THE COMMUNITY ON ROARING CREEK

SENECA ROCK



WRR

SPRUCE KNOB  
AND  
THE SINKS OF GANDY  
MONONGAHELA NATIONAL FOREST



LB

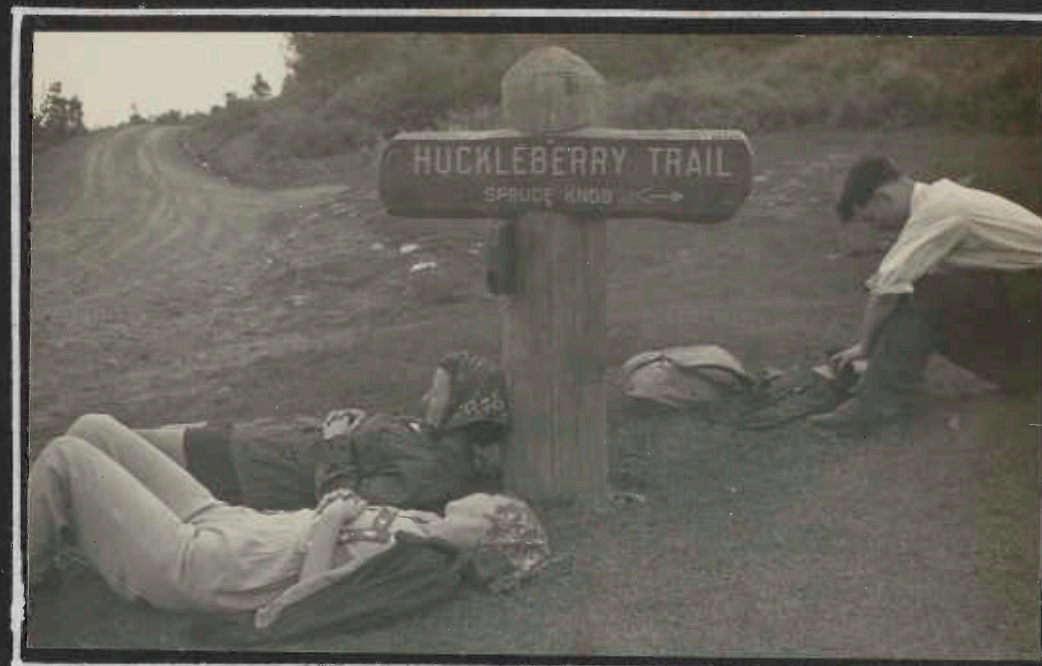
50-WINNIE IS TOPS IN WEST VIRGINIA - ON SPRUCE KNOB - STATE HIGH POINT - 4860 FT.



WMR

PHOTOGRAPHY IN THE CLOUDS - ON THE SUMMIT - SPRUCE KNOB

SOME PEOPLE ALWAYS WANT TO REST ---

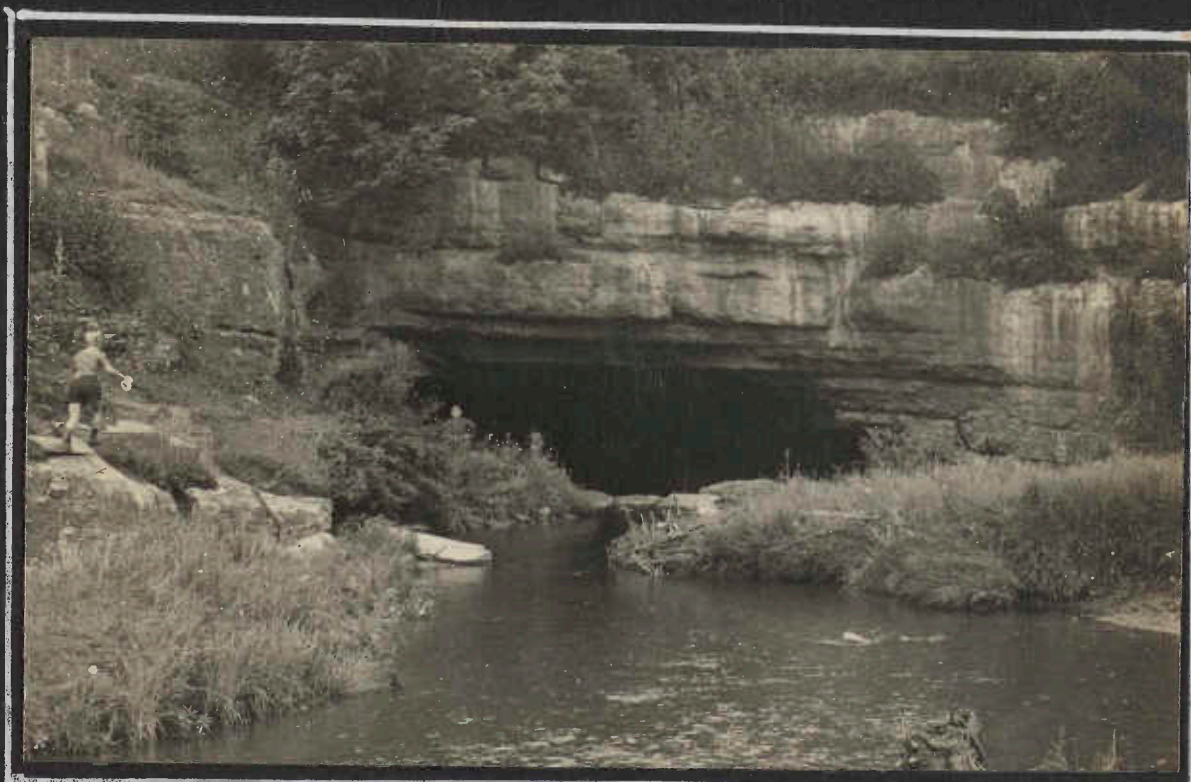


WMR



WRR

DINOSAUR ROCK



FC



WRR

GANDY CREEK GOES RIGHT ON THROUGH THE MOUNTAIN - THE PLACE IS KNOWN AS "THE SINKS OF GANDY"

AND HERE - INTO THE SINKS. DID NOT HAVE TIME TO GO THROUGH.

THE JUMBLED MASS OF MOUNTAINS SOUTHEAST FROM SPRUCE KNOB.



FC



THE MCM PARTY JOINS UP WITH  
PAUL BRADY'S WASHINGTON  
GROUP FOR AN EXPLORATION  
TRIP DEEP INTO RATHER THAN  
OVER THE MOUNTAINS.



ANNETTA HEARD -  
IN PROPER CAVE ATTIRE

SCHOOLHOUSE CAVE -  
WEST VIRGINIA -  
LABOR DAY PERIOD - 1941

ANOTHER OF THE "SEMI-PRIVATE" TRIPS



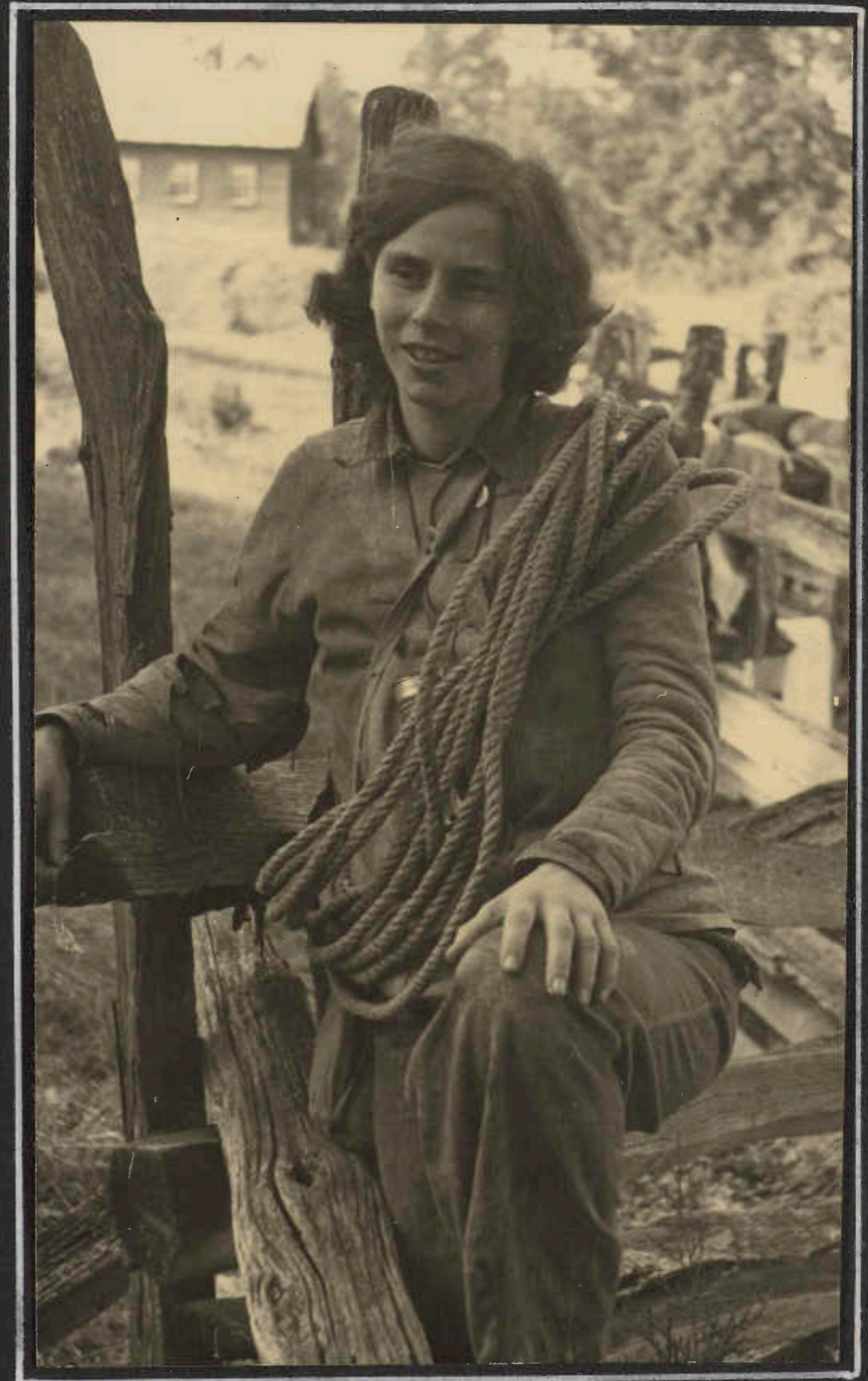
THE OLD CAMPAIGNER  
GOES "DOWN" THIS TRIP

SCHOOLHOUSE CAVE



HOMO SPELÆUS

BILL KEMPER



VIRGINIA

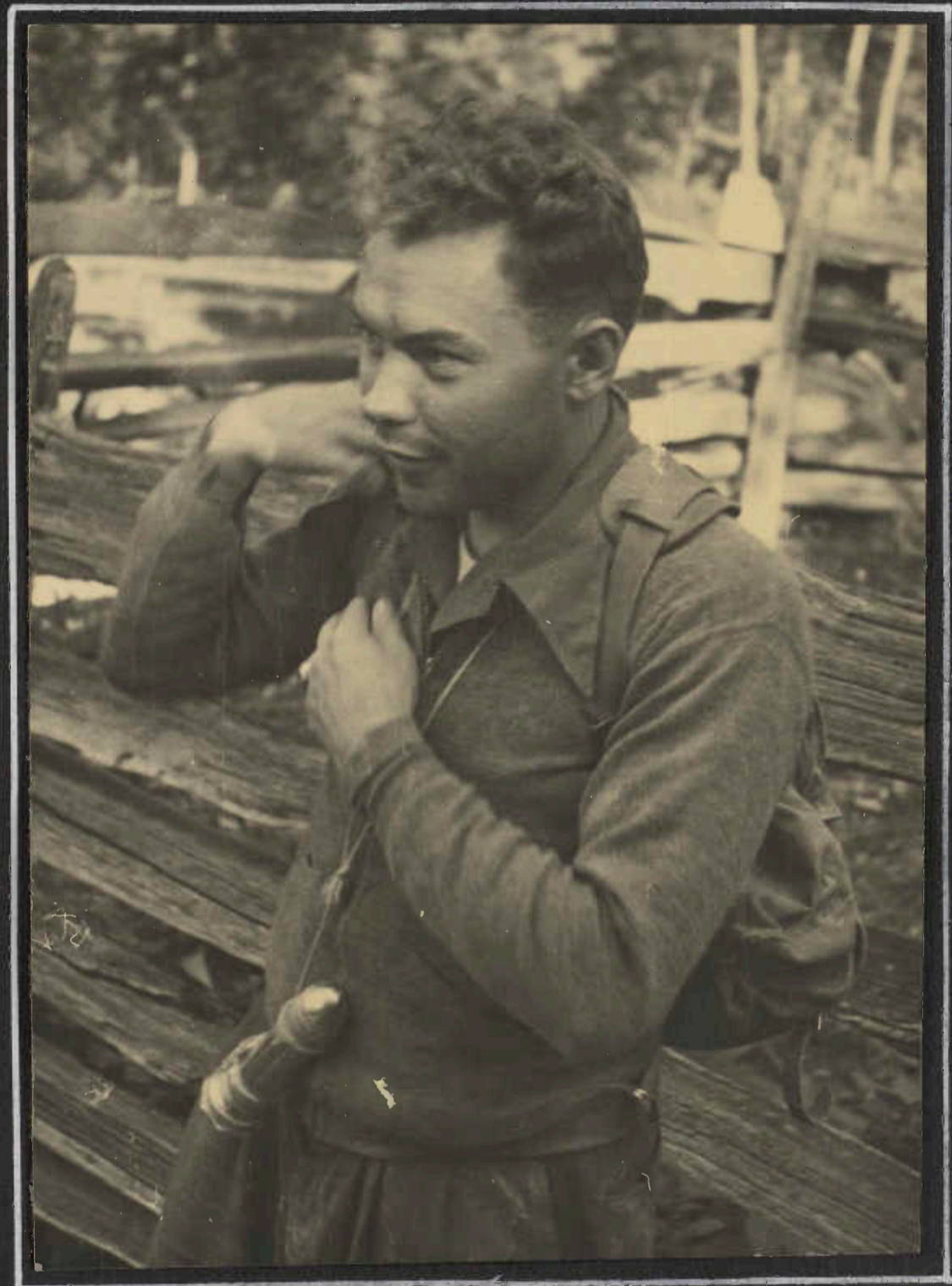
SURVIVED THE ROPE TO LATER ESCAPE TO DENVER

SCHOOLHOUSE CAVE TRIP  
LABOR DAY PERIOD  
1941



ALICE

EVEN BLONDES LOOK THAT WAY AFTER A  
TRIP IN THE CAVE.



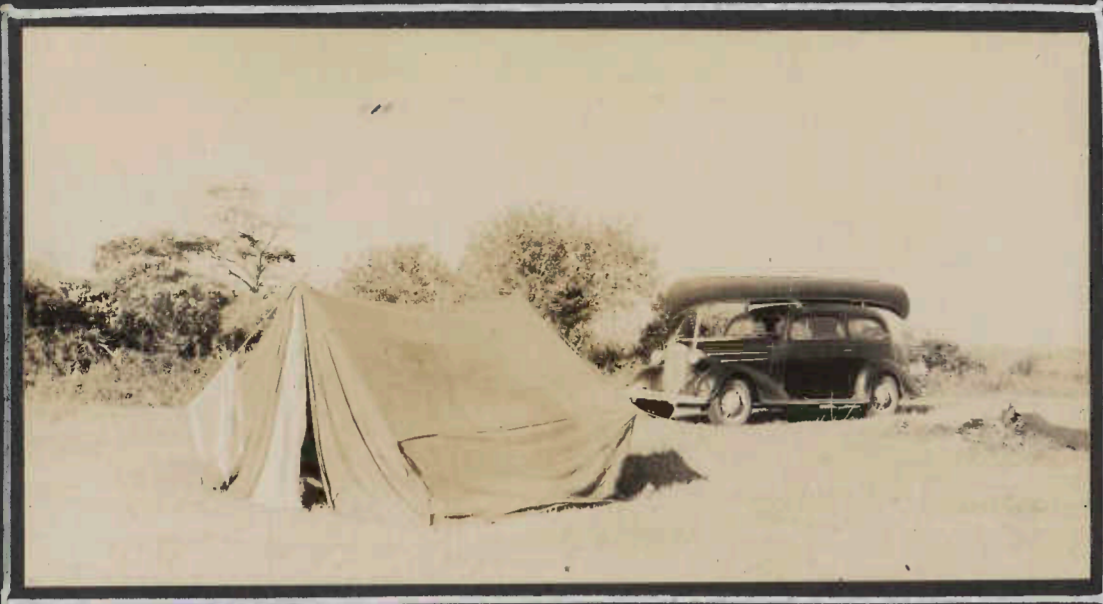
ED -

WILL TRY ANYTHING



ST. MARY'S CANOE TRIP

SEPT. 13-14, 1941



CAMP, WE'D SAY

LB



THE FLEET

LB



CASES AND CASES OF STUFF TO EAT.

WMR



LITTLE GIRLS EAT YOUR PORRIDGE

LB FOR WMR



MAKING READY -

WMR



SUNBURN PREVENTIVE

LB



ALWAYS HUNGRY -

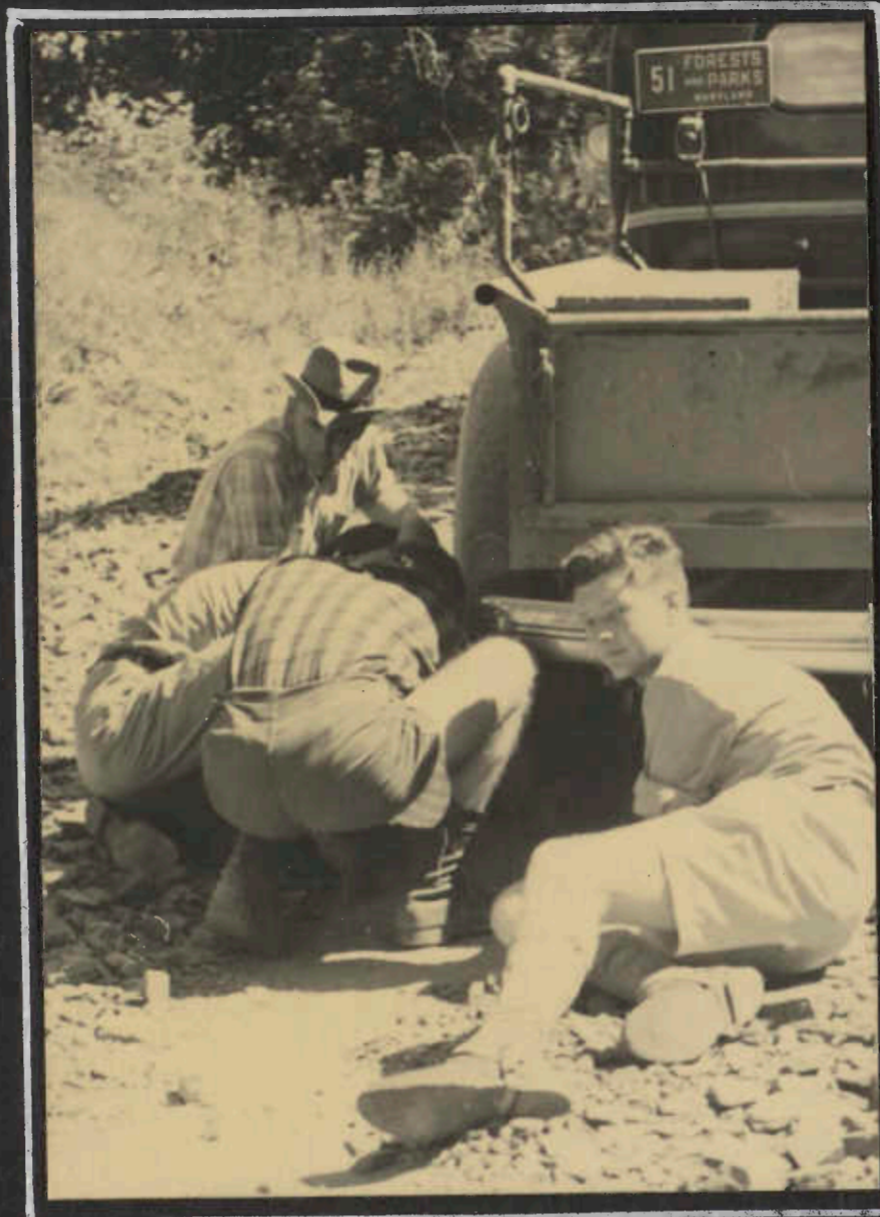
LB

TOWN HILL - PAW PAW - SHELTER TRIP  
 SEPTEMBER 20-21, 1941



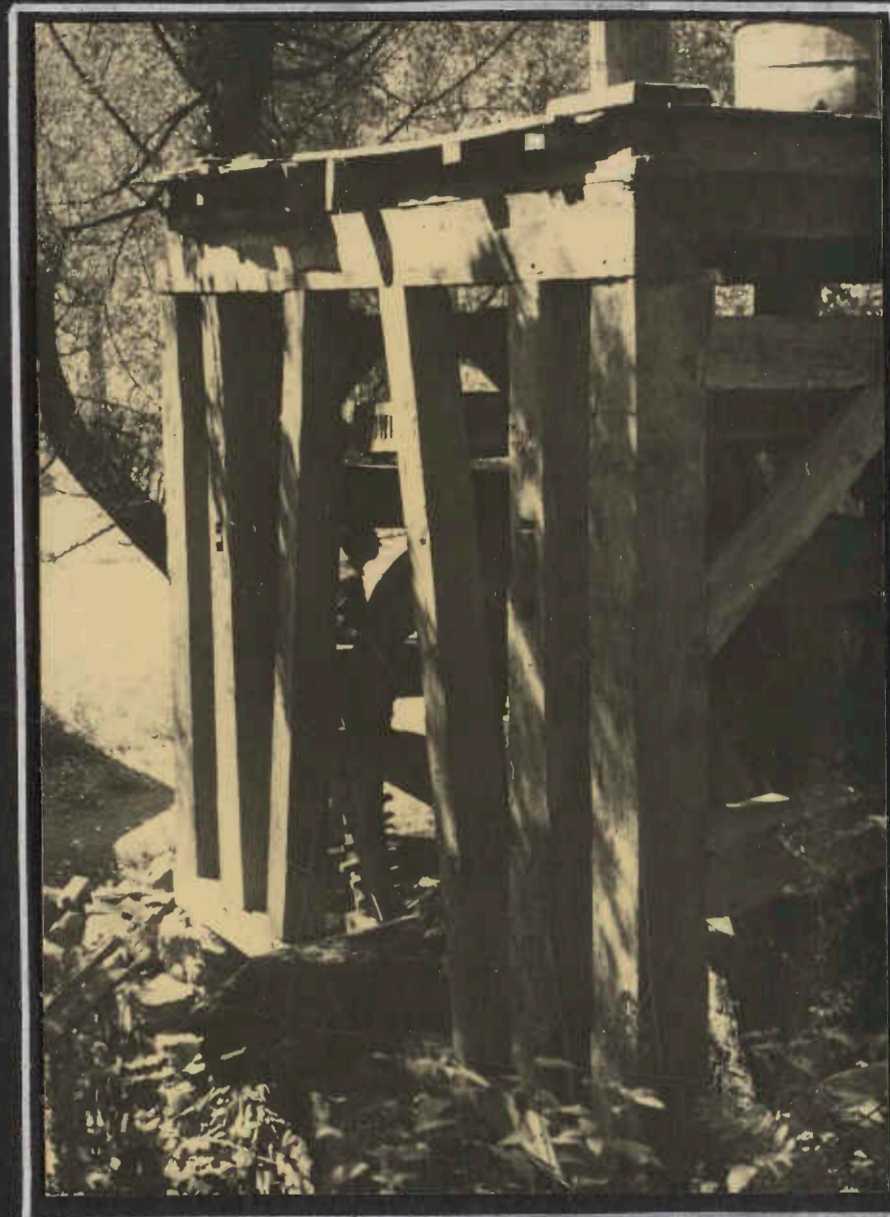
ooh

SOMEHOW THE PHOTOGRAPHY DIDN'T  
 START 'TILL DOWN AT NORTH RIVER MILLS



ooh

IT'S ENSIGN DAVE PRIDDEN NOW —  
 THE TRUCK DEVELOPED A FLAT.



ooh

WOODEN GEAR WHEELS - OLD  
 MILL AT NORTH RIVER MILLS -  
 WEST VIRGINIA



wmr

FRONT VIEW

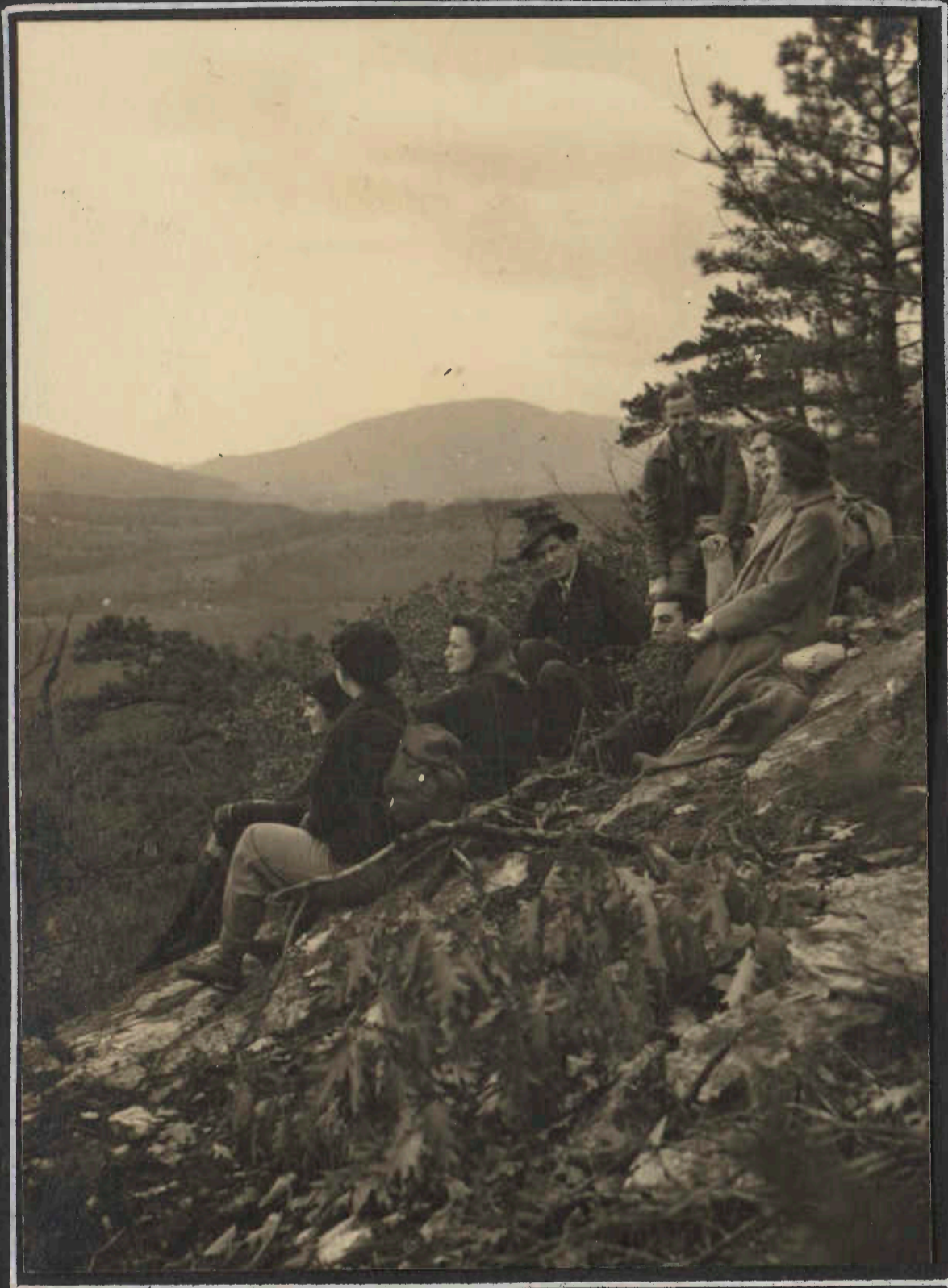


ooh

REAR VIEW

GOING UP ICE MOUNTAIN

NOVEMBER 1941



WRR

MERLE'S CLAYLICK MOUNTAIN TRIP - NOV. 230

HELEN BESLEY, RUTH LENDERKING, DOROTHY COCHEL,  
GEORGE RUSSELL, FRANK CALAFIORE, MERLE HEART,  
MORGAN BARR, JEAN RUSSELL

TOWN-HILL - PAWPAW - SHELTER -



004

DOROTHY PAINTS THE HOOD OVER THE INDOOR FIREPLACE

HEARD'S SUPER-TRIP TO THE SHENANDOAH PARK - NOVEMBER 8-9.



WRR



WRR

THE ATTENDANCE REQUIRED THREE SHELTERS -  
RANGE VIEW (ABOVE), MEADOW SPRING, AND  
THE SHAVER HOLLOW LEANTO. THERE WAS A  
THIRTEEN MILE HIKE, BUT THE WEATHER WAS  
SUCH THAT ONLY THESE TWO PICTURES SURVIVED.

ICE MOUNTAIN - DARBY'S NOSE - CAUDY'S CASTLE  
CROWDERS HIKE - SEPT. 20, 1941



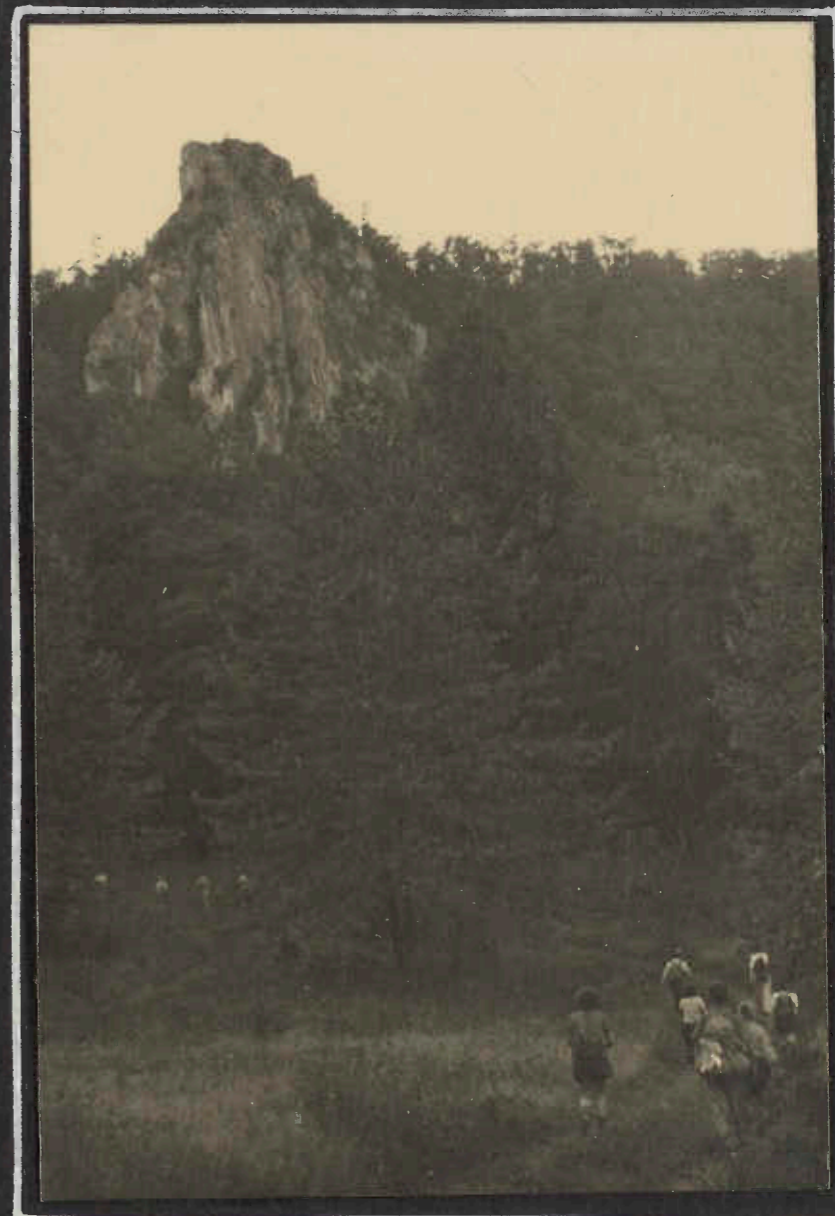
ED AND BEA BOETTIGER, ON ICE MOUNTAIN

OOH



DARBY DIDN'T HAVE MUCH OF A NOSE - SO IT'S A BIT CROWDED - JEAN, WINNIE, RITA, BEA, AND ALLEN.

WMB



LATE IN THE DAY -  
CAUDY'S CASTLE  
LOOMS AHEAD.

WRR

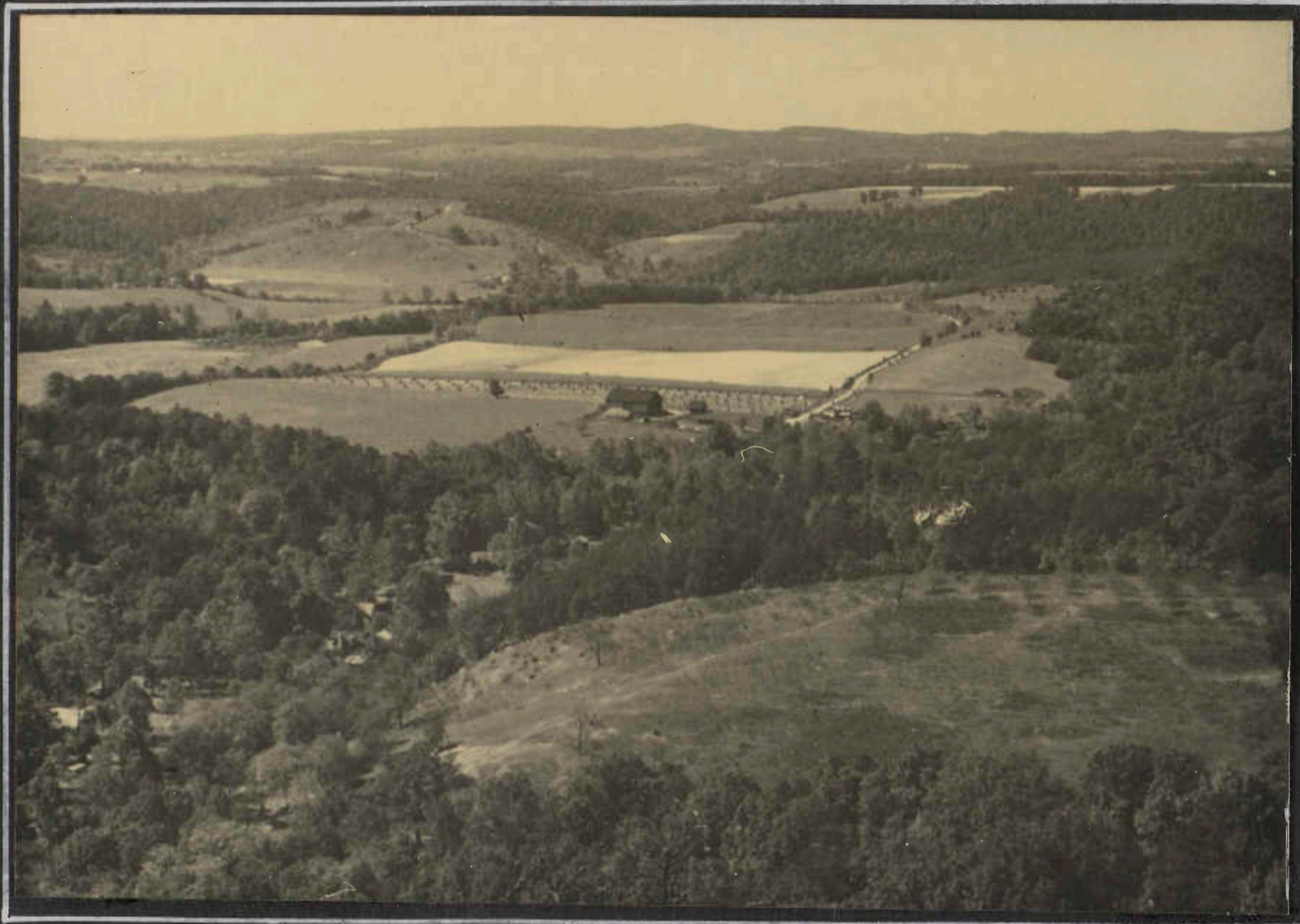


HELPFUL CROWD WATCHES EFFORTS AT PICKING  
AUTOMOBILE LOCK - - - IT'S A LONG STORY.

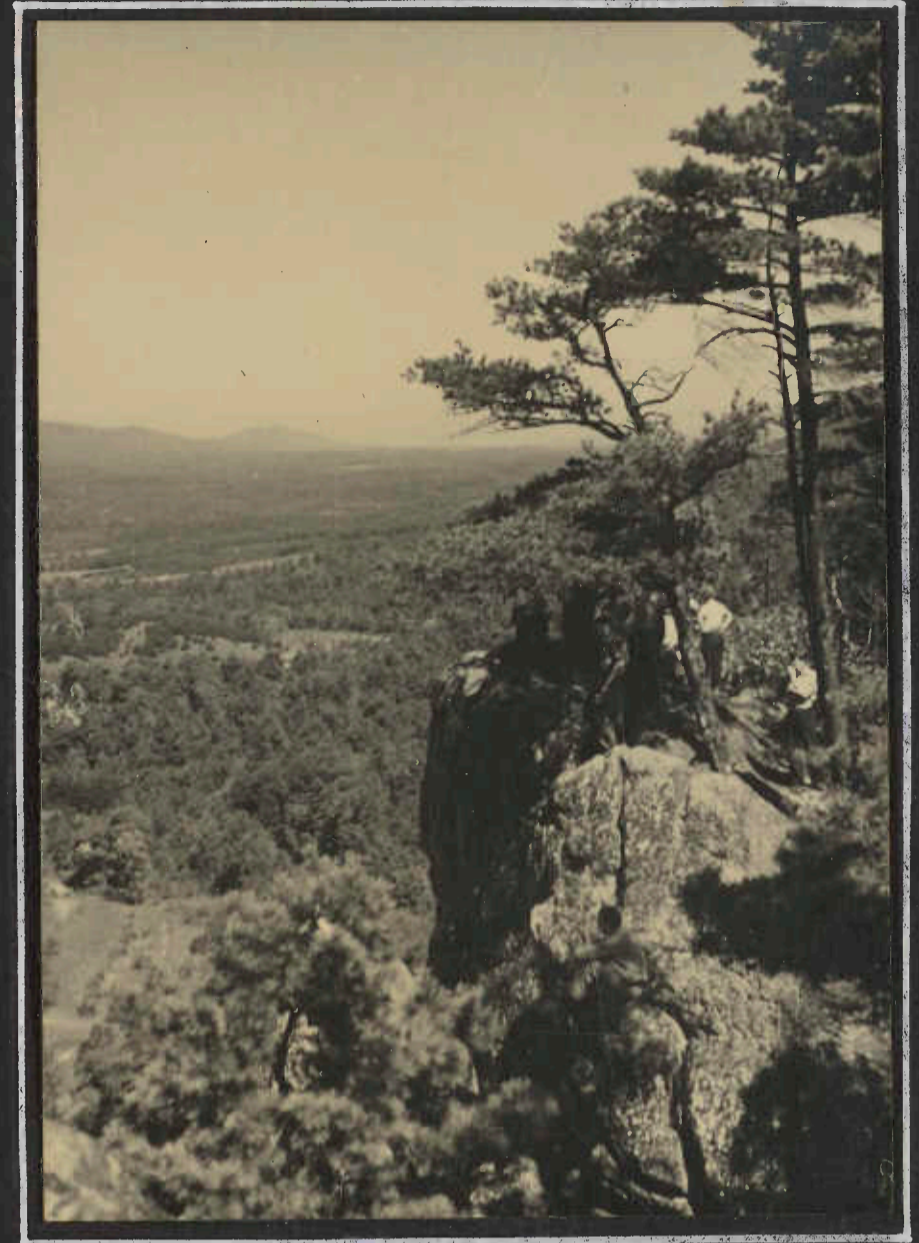
WMB

ICE MOUNTAIN

SEPT. 21, 1943



VIEW FROM ICE MOUNTAIN



ON ICE MOUNTAIN - POTOMAC RIVER GAP  
IN SIDELING HILL TO THE NORTHWEST

edit

OOH



THE DOUG WILLIAMS'

LUNCH SPOT WAS NEAR  
THE VIRGINIA-WEST VIRGINIA  
BORDER

OOH



?

FORDING THE CACAPON RIVER



THE WATER WAS "FINE" BUT THE BOTTOM WAS ROCKY

OOH



RITA BAKER AND MARY HYLAN  
ARE A BIT CAUTIOUS -

WMR



WMR



WMR



AH - RUTH CATCHES HIM

OOH



AND DOUG TRIES TO IDENTIFY

OOH



ELOISE HAS PLENTY OF SHOES - TOP AND BOTTOM PICTURES

WMR

# CAUDY'S CASTLE

SEPT. 21, 1941



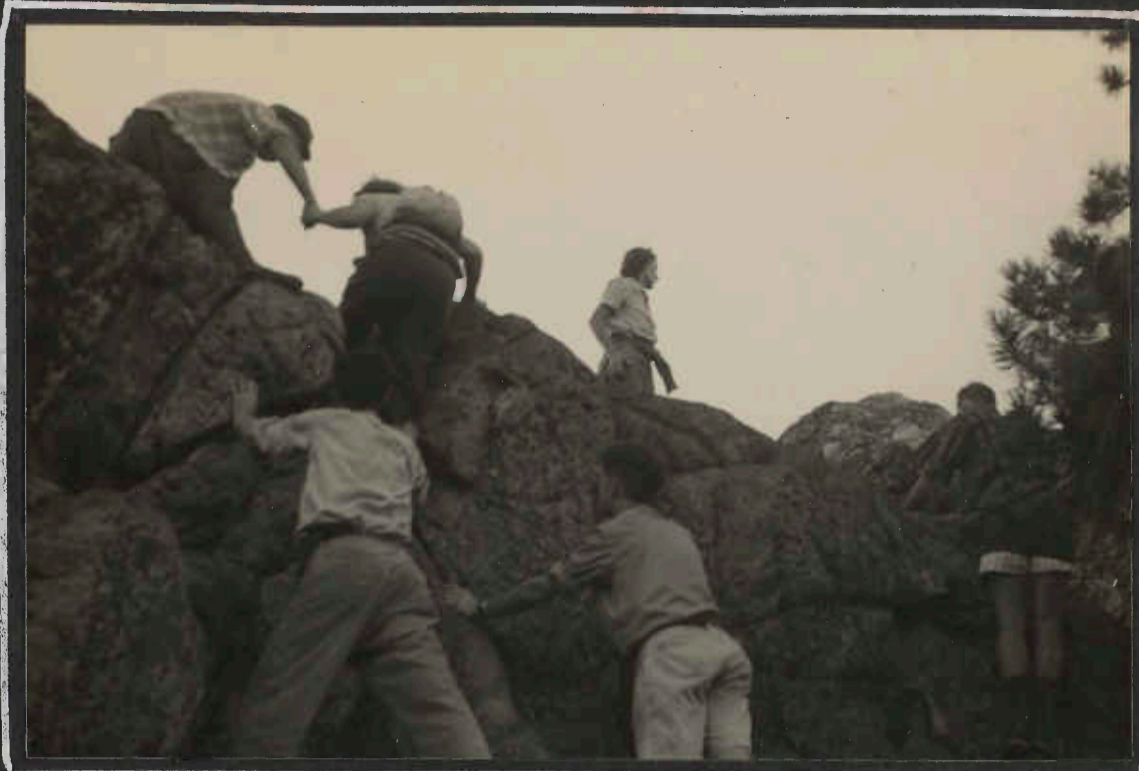
IT WOULD LOOK AS IF HE GOT THE PICTURES - BUT OSHEARD GOT ALL EXCEPT ONE -

WE DIDN'T GET ON CAUDY'S CASTLE, AN ALMOST SHEER ROCK ABOVE THE CACAPON RIVER UNTIL LATE IN THE DAY - JUST ABOUT SEEING SUNSET.

THE PICTURES ARE A PARTIAL RECORD OF WHO'S THERE AND HOW - EVEN ONE OF THE TRIP LEADER UP HERE



WMR



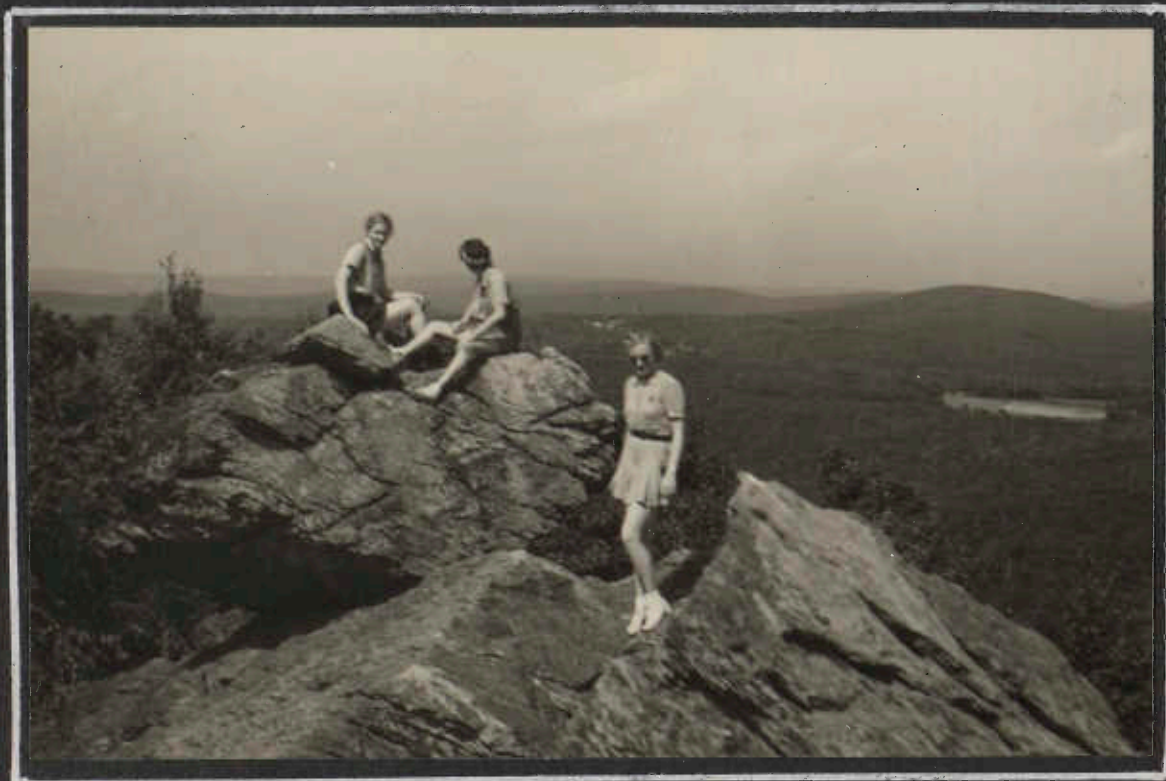
APPALACHIAN TRAIL HIKE  
SEPT. 7, 1941

HIGHWAY 16 - NORTH TO CALEDONIA PARK



WRR

LUNCH - AT ANTIETAM LEAN-TO  
(THE MEN DON'T EAT)



WRR

ON CHIMNEY ROCKS (YES, A NEW BLONDE)

SATURDAY AFTERNOON HIKE

OCTOBER 25, 1941



Fo

ALONG THE PATAPSCO - NORTH FROM MARRIOTSVILLE ROAD -  
ALL WE'VE BEEN TOLD IS THAT KENNEDY LED BY PROXY



WRR

PENNSYLVANIA SANITARIUM FROM SNOWY MOUNTAIN TOWER

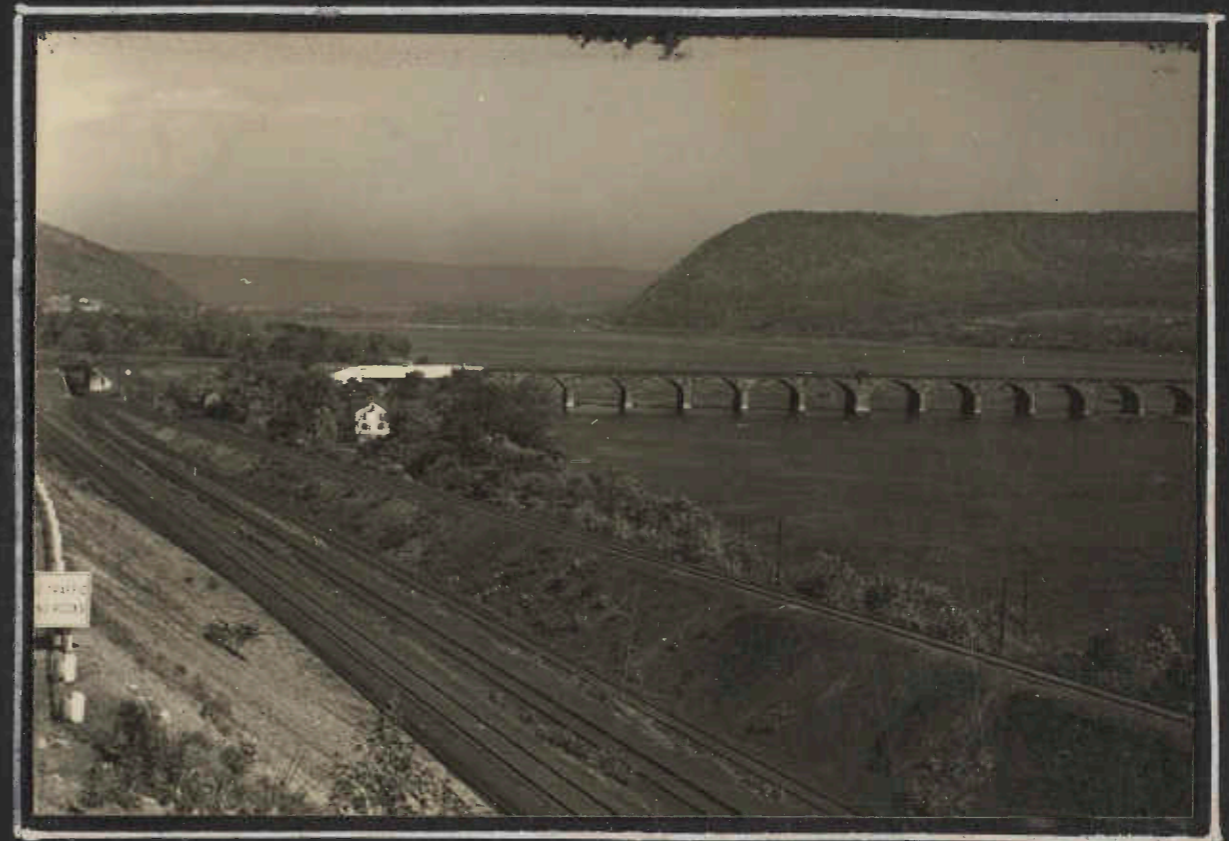


UP THE SUSQUEHANNA TO COVE MOUNTAIN

OCTOBER 5, 1941



SECOND MOUNTAIN - AND BLUE MOUNTAIN - FORT HUNTER



COVE MOUNTAIN - LEFT, PETERS MOUNTAIN ACROSS THE RIVER



NORTHWARD FROM COVE MOUNTAIN



THE JUNCTION OF THE JUNIATA AND SUSQUEHANNA RIVERS  
NOTE "DRY LAND" APPEARANCE OF THE SUSQUEHANNA  
IN ALL PICTURES. HARDLY ANY WATER COMING DOWN.



DUNCANNON BELOW

Pictures W.R. Roessler

COVE MOUNTAIN TRIP



"WASH-UP" IN SHERMAN CREEK

WRR



PETERS MOUNTAIN ACROSS THE SUSQUEHANNA - FROM SHERMAN CREEK

WRR



OOH

THE TRIP  
MOVED ON  
TO THE HOME  
OF GEORGE  
AND SALLY  
KAIN —  
IN YORK  
WHERE THERE  
WAS A PROGRAM  
OF SQUARE  
DANCES



OOH

OUT TO THE MASSANUTTENS

OCTOBER 18-19, 1941

OVERNIGHT AT NEWMARKET GAP FOREST CAMP.  
HIKE SOUTH ALONG THE RIDGE FROM NEWMARKET  
GAP, TO DESCEND TO CATHARINE FURNACE  
EXCELLENT TRIP, IDEAL WEATHER, PLENTY TO EAT.  
FRANK CALAFIORE, LEADER



ACTIVITY APLENTY AT BREAKFAST

WMR



CAMP BREAKFASTS ARE USUALLY LIKE THIS

WRR



JUST UP FROM THE GAP - NOTE ROAD - HIGHWAY 211

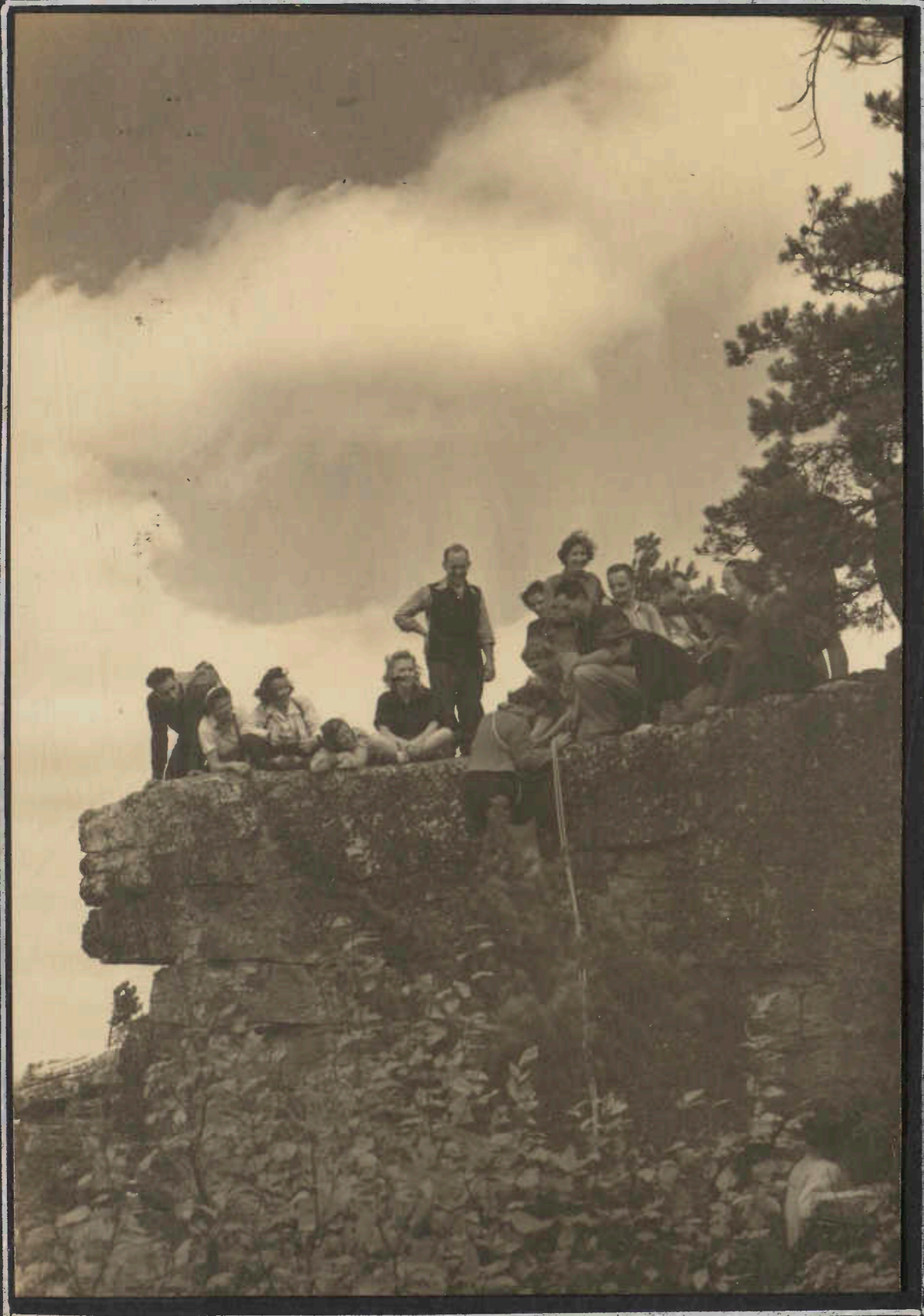
WRR



THE MASSANUTTENS

WRR

MASSANUTTENS TRIP - OCTOBER 1941



A BIT OF ROPE WORK ALONG THE WAY  
THE CLOUDS ARE "RIGHT THERE"

MARIE

STRANGE HOW AN  
EASTMAN LENS WILL  
GO FOR A BLONDE



MUST HAVE BEEN A GOOD STORY- BUT ED APPARENTLY DIDN'T GET IT

THE MASSANUTTENS - OCTOBER 19, 1941



THE SHENANDOAH VALLEY - NEAR NEWMARKET -

WRR



LUNCH -

EW



THE POOCH ADOPTED US AND HIKE ALONG. ED - TAKE IT EASY - BEA IS SHOCKED AT HOW YOU GO FOR LUNCH

EW



LATE IN THE DAY - IN THE PAGE VALLEY, THE BLUE RIDGE AHEAD

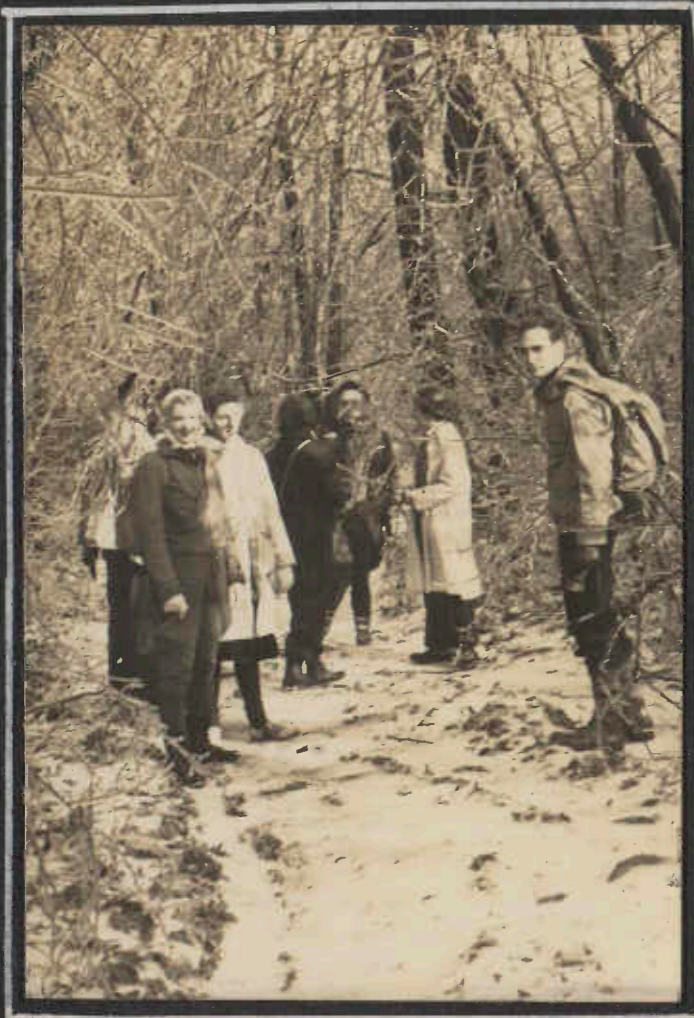
WRR

TRYING TO PICTURE THE RIDGE IN THE FADING LIGHT -



WRR

MARYLAND APPALACHIAN TRAIL HIKE  
WOLFE GAP TO  
WASHINGTON MONUMENT



THE ICE STORM OF THE DAY BEFORE  
SHEATHED EVERYTHING WITH A  
SMOOTH GLASSY ICE.



PINE KNOB LEAN-TO - FAR DOWN THE TRAIL - WAS  
THE LUNCH STOP, IT WAS A WELCOME SHELTER

"THE ICE TRIP"  
DEC. 14, 1941



ALICE BREAKS TRAIL



GLISTENING IN SUNLIGHT A-WHILE



THEN COLD UNDER GREY SKY



FOR ONCE - DRINKING WATER - A BIT COLD  
HOWEVER - ALONG THIS PART OF THE TRAIL