

Volume 4
The Club Album
July 1939 - March 1940

The Mountain Club of Maryland

Pictures in this album by eight photographers, Hans Marx, of the Sunpapers, on the 4-Club Catoctin Trip of November 1939, and seven members of the club, their work for the most part identified by initials.

LB - Lawrence A Bruno FB - Florence Burner
JC - Jean Conner O.O.H. - Osborne O Heard
ER - Eleanor Reindollar
WMP - Winnie Rodemeyer
WRR - W R Rossler

271 - Prints and enlargements for the most part by the "work squad" of the Photographic Group of the Club.

December 3, 1941

ALL-NIGHT
MOONLIGHTS

THRU THE YEARS



JULY 9-10, 1938

LUNCH STOP

FC



FC

CATOCTIN RECREATIONAL AREA



WRR

JULY 30, 1939

IN THE DAWN'S EARLY LIGHT - LONG BEFORE
SUNRISE, AT HOG WALLOW OVERLOOK -
SHENANDOAH PARK. RIGHT TO LEFT - MORGAN
BARR, BILL KEMPER, LYMAN EMERSON, VIVIAN
WAGNER, FRANK CALAFIORE, AND A GUEST.

APPALACHIAN TRAIL
BRANDTSVILLE - ROUTE 94

JULY 20-21, 1940



WRR

AT CENTER POINT KNOB - EARL ROBERTS IS UNCERTAIN ABOUT THAT
BRONZE MIKER OVER HIS SHOULDER. ELOISE COCHEL AND RUBY BERE
INVESTIGATE THE ROCK. FRANK AND DOROTHY - WELL -



WRR

SUNRISE - FAR AWAY OVER THE MOUNTAINS - -
FROM LONG MOUNTAIN TOWER -

SEXTON SHELTER TRIP

JULY 1-4, 1939



O.O.H.

"IT'S WAY-WAY-OVER THERE"



O.O.H.

SO RITA TAKES THE GLASSES TO SEE-



WMR

AND HERE IT IS - SEXTON SHELTER - ON SHENANDOAH MOUNTAIN - IN THE GEORGE WASHINGTON FOREST



WMR

REMEMBER THE BALL TEAM AT THE NUTRITION CAMP? AND THEIR HELPERS AND ROOTERS?



WMR

WELL, YOU'D BE TIRED TOO IF IT TOOK YOU 29 HOURS TO REACH SEXTON SHELTER -



WMR

ONLY 25 1/2 HOURS OUT OF BALTIMORE AT THIS POINT --- AND THE CAR WITH A FLAT --- AND SO -

SEXTON SHELTER TRIP
ELLIOT'S KNOB HIKE - JULY 3, 1939



RESTING ON THE TRAIL --
THAT'S HARRIET'S HAT -

FB



ELLIOT'S KNOB - ELEVATION 4473 FT.

OOH



AND THE TOWER ON THE SUMMIT

WMR



EATING HIGH -- AWAY FROM THE CAMERA --
RUTH LENDERKING, LYMAN EMERSON, GEORGE KAIN,
FLORENCE BURNER, WINNIE RODEMEYER,
EMILY KAIN, BILL KAIN, BILL KEMPER -

WRR



WELL - WHAT KIND OF A TITLE
WOULD YOU PUT UNDER THIS?

WRR



LYMAN LEAVES THE
CARIBBEAN FOR A MOMENT

WMR



MIRIAM AND JEAN EAT TOO

WRR

SEXTON SHELTER TRIP
ELLIOT'S KNOB HIKE - JULY 3, 1939



AS USUAL - RESTING -

WMR



"REST" EXPRESSIONS

OOH



WINNIE LOOKS OVER THE
ROUTE OF THE AFTERNOON HIKE

FB



OTHER PARTS REST TOO --

DAH



THE TITLES ON THE SIGN --

WRR



WHY?

WRR

SEXTON SHELTER TRIP - JULY 1-4, 1939



THE CLOUDS ARE RIGHT THERE -

FB



WRR



WRR

THE NORTH MOUNTAINS - LOOKING BACK AT THEM AFTER THE HIKE - ELLIOT'S KNOB, THE HIGHEST IS SECOND FROM THE RIGHT - THE ONE WITH THE FIRE-TOWER ON IT -

"WE ARE HIKERS, MOUNTAIN CLIMBERS,
THIGHS AND SINEWS TOUGH
AS LEATHER
WE CAN TRAMP IN ANY WEATHER,
GOSH ALL HEMLOCK!
TOUGH AS A PINE KNOT,
WERE FROM MCM YOU SEE!"
RITA MAY BAKER

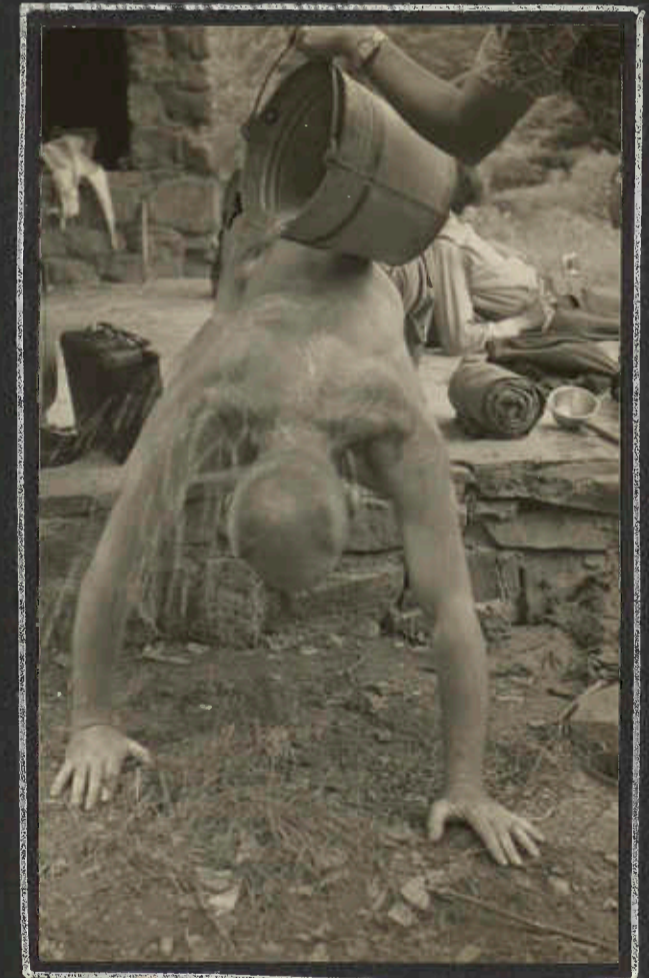


OOH

"BLISTERS" IN THE ROCK -
HEIDT'S HOLLOW



OOH



WMR

UNIDENTIFIED CAMPER
GETS HIS BATH AFTER
THE HIKE - - - -

SEXTON SHELTER TRIP - LAST DAY HIKE - JULY 4, 1939



O.O.H.



O.O.H.



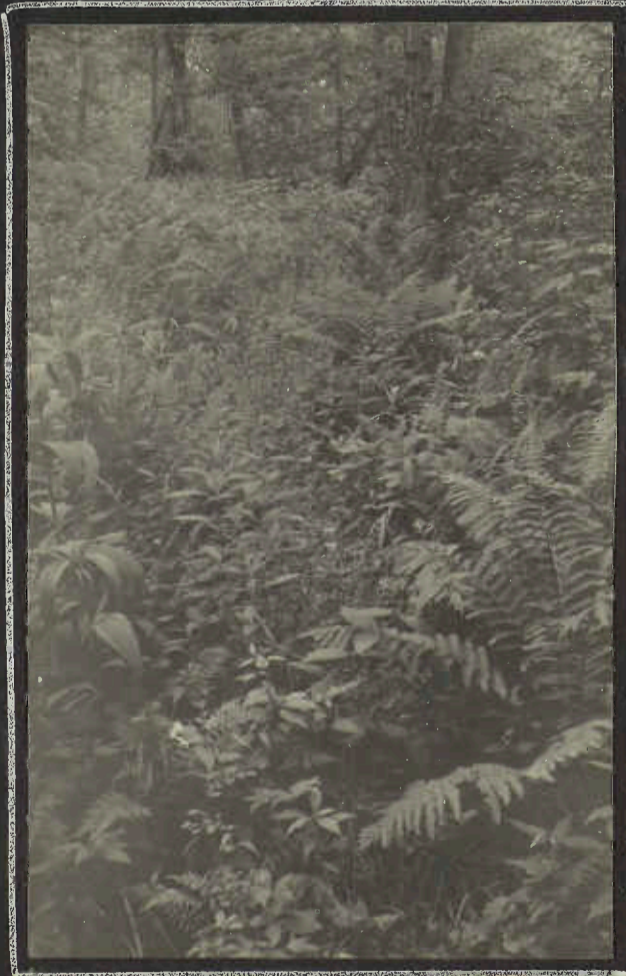
O.O.H.

TIME OUT AGAIN - HELEN BORG, WINNIE RODEMEYER, RITA BAKER, RUTH LENDERKING, FLORENCE BURNER, GEORGE KAIN, LYMAN EMERSON, DICK ROESSLER, MIRIAM RITTENHOUSE, OLIVER ISAAC, JEAN CONNER, HARRIET CASPARI.



O.O.H.

THE BOTANY GROUP HAS A FIELD DAY



W.M.R.

IN THE PRIMITIVE AREA - - - THE TRAIL IS IN THE MIDDLE - -



W.R.R.

THE ALLEGHENIES - WESTWARD - JUST BEFORE THE RAIN



W.R.R.

↑ THE RATTLESNAKE - HID HIS HEAD BEHIND A LEAF AS THE SHUTTER CLICKED, BUT HIS RATTLES ARE CLEARLY VISIBLE -

BEACH HIKE - ALONG THE CALVERT COUNTY BAYSIDE
JULY 16, 1939



DO WE EAT HERE?

FB



THE LUNCH SPOT - WITH LIMITED SHADE

WRR



LOIS PLATT, RITA BAKER, DOROTHY MOORE, AND
JEAN CONNER. LOIS CLAIMED THE SKELETON.

WRR



WALKING THE BEACH -

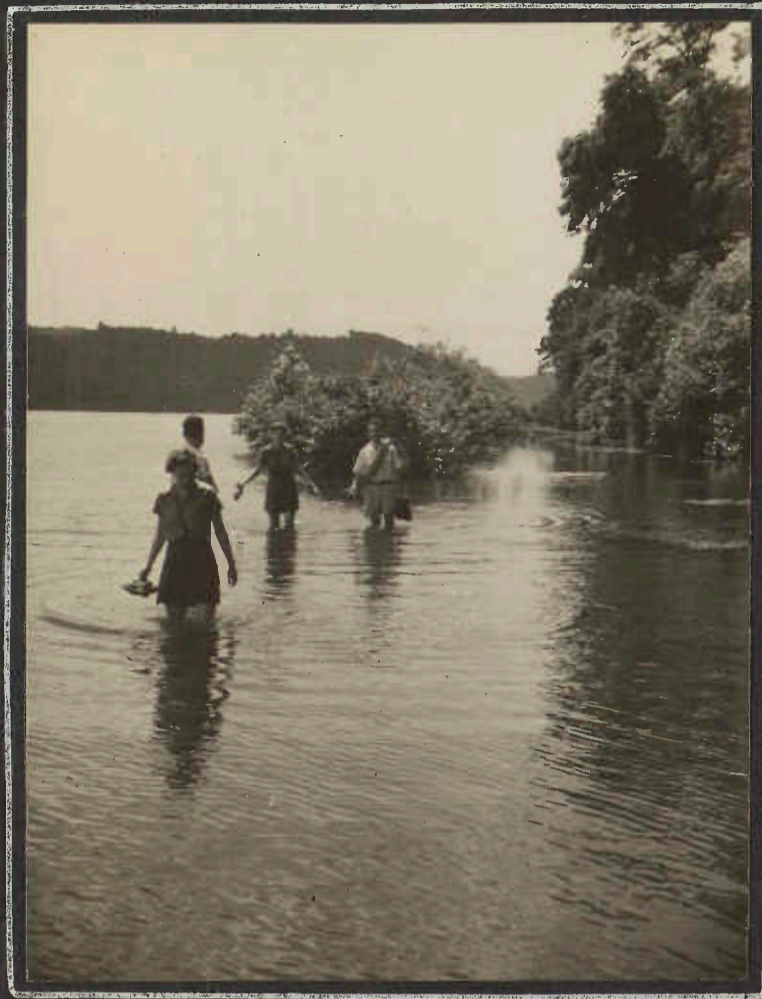
WRR

JOHN PAUL JONES
AUGUST 5-6, 1939



WMR

IT TURNED OUT TO BE A GOLDFISH
HIKE -- WITH ALEC KEEPING
PEOPLE ON THE TRAIL



WRR

THE ROUTE WAS ALONG THE ONE-TIME
TOWPATH OF THE LATE CANAL ---
AS YOU SEE ---



WRR

ONE GROUP GOT
IN SO DEEP THAT
THEY RETURNED
BY BOAT ---
ABOVE - PULLING
IN. AT LEFT --
DISEMBARKING,
SAY - PETE HICKS
MUST HAVE
ENJOYED IT. -



WRR



WRR

THE CAMERA SPOTS A PAIR OF CHOICE
BLONDES - VIVIAN HELLER AND SALLY RUTH



WMR

TAKING LIFE EASY ON
THE PORCH



WRR

FRANK FINDS THE NAVY -- AND NICE PASSENGERS

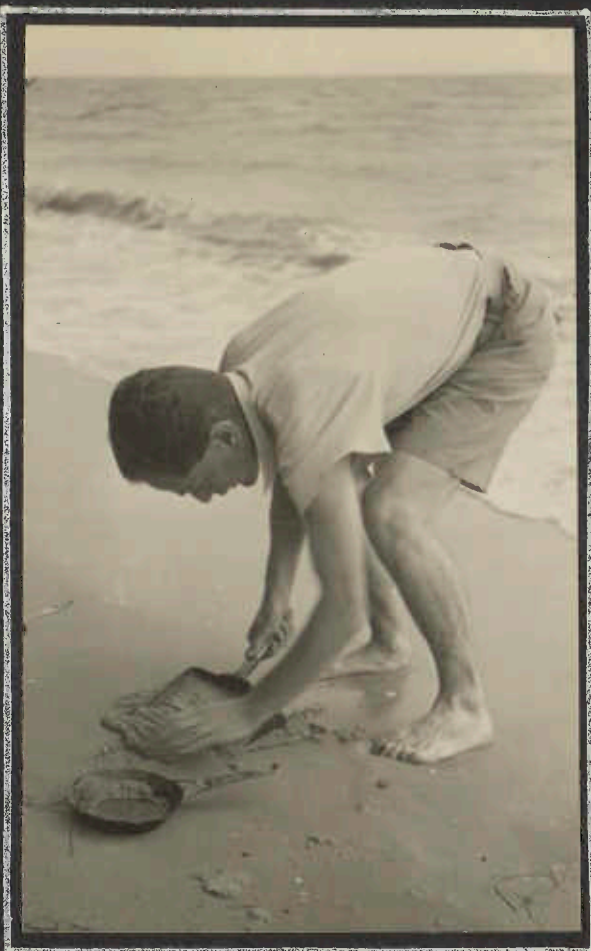
PLUM POINT- DARE'S WHARF

AUG 26-27, 1939



WMR

WASHING THE DISHES -- AND THE SALT WATER IS GOOD FOR THE FEET, TOO.



WMR

HEINZ CONTINUES THE CUSTOM OF SAND-BLASTING THE SKILLETS --



WMR

NOW, GRACIE, TELL US THAT STORY --



WRR

GRACE WAGNER, TRIP LEADER, TELLS THE HIGHLY SKEPTICAL CLUB PRESIDENT WHAT NEXT --- LOOK HOW DARK IT IS BACK IN THE WOODS-- WHERE WE CAMPED --



WMR

READY TO "PACK" TO THE CARS



WMR

IT SEEMS THAT GRACE IS TYING SOMETHING ASTERN DOROTHY ---



WRR

SO THEN HE HAD HIS GLASSES CHANGED AND GREW A MOUSTACHE!



WRR

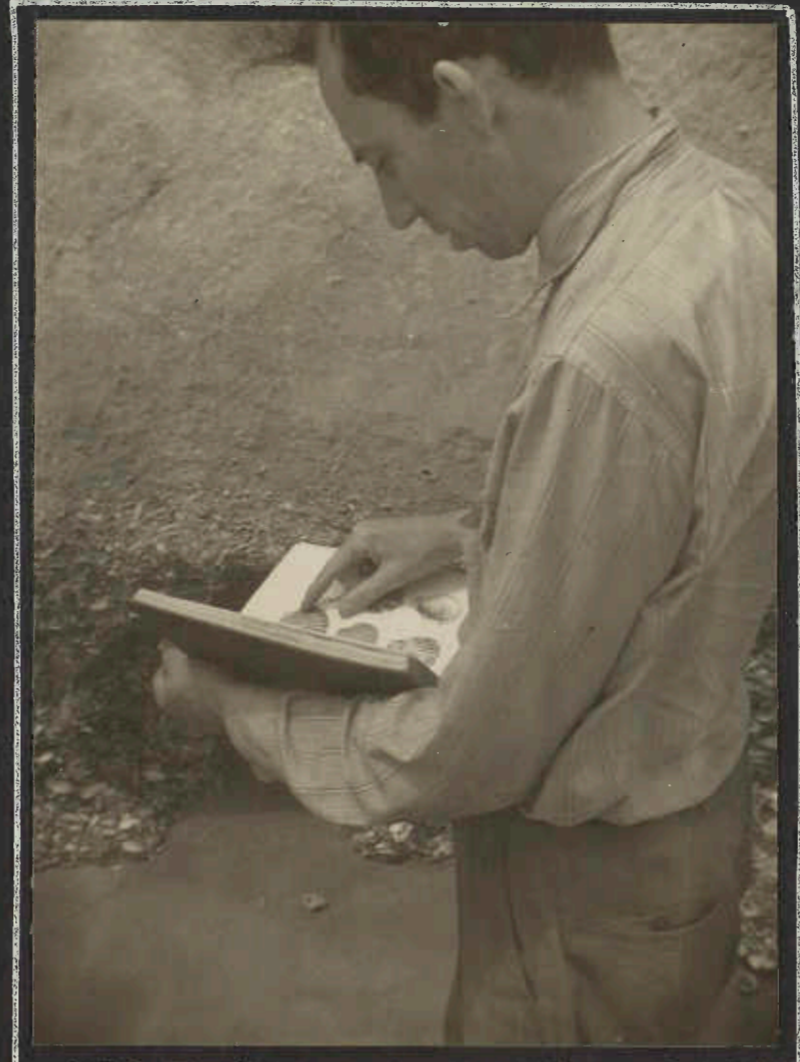
OLIVER IS HAVING TROUBLE SELECTING ZWIEBACK-- AND PAUL MOVIE-RECORDS IT -- IN THE LUNCH CIRCLE AT DARES WHARF --

PLUM POINT- OVERNIGHT CAMP AND BEACH HIKE
 AUGUST 26-27-1939



WRR

CUTE LITTLE GIRLS- DIGGING INTO MILLIONS OF YEARS-



WRR

AH-- HERE IT IS -- ONLY 19,000,006 YEARS OLD -- AND NOT TWENTY MILLION AS CLAIMED IN THE TRIP PROSPECTUS --



WRR

BILL KEMPER COLLECTS SHARKS TEETH. THE SHORTS? OH, NO- THE SHARKS DIDN'T DO THAT -- THATS JUST WEAR AND TEAR --



WRR

"I DONT GET IT, BILL -- THEY SEEM TO THINK WE LOOK LIKE BEACH COMBERS"



WRR

DOROTHY, WINNIE, MILDRED, AND PAUL

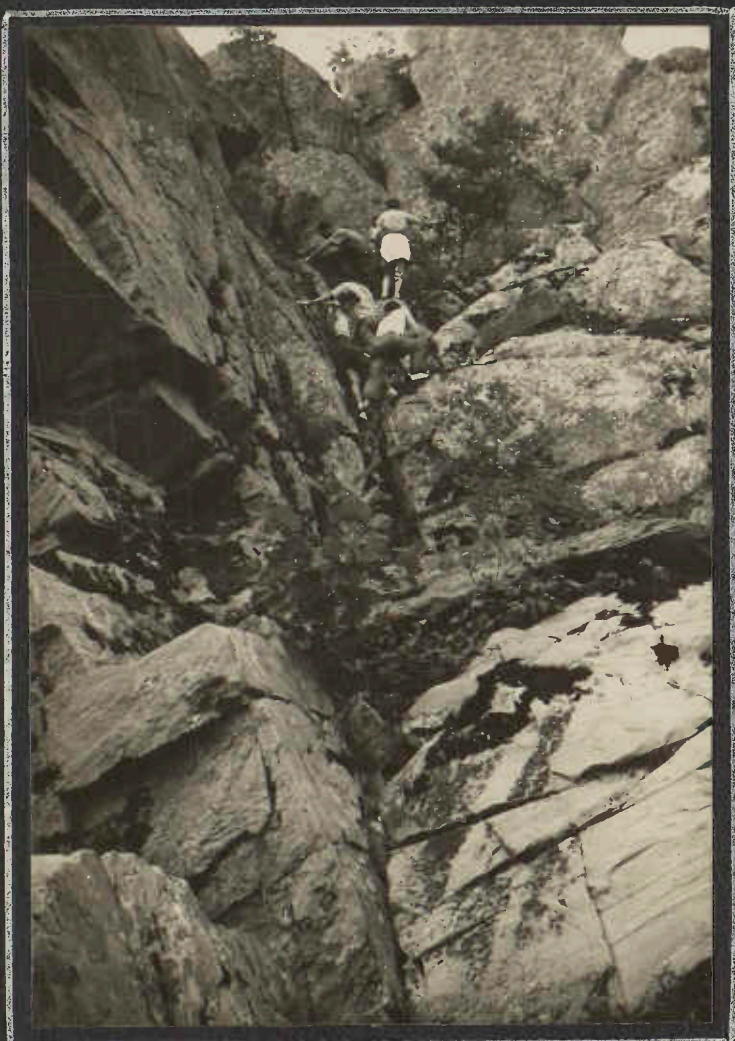


WRR

BEN TELLS FRANK - AND LYMAN ENJOYS

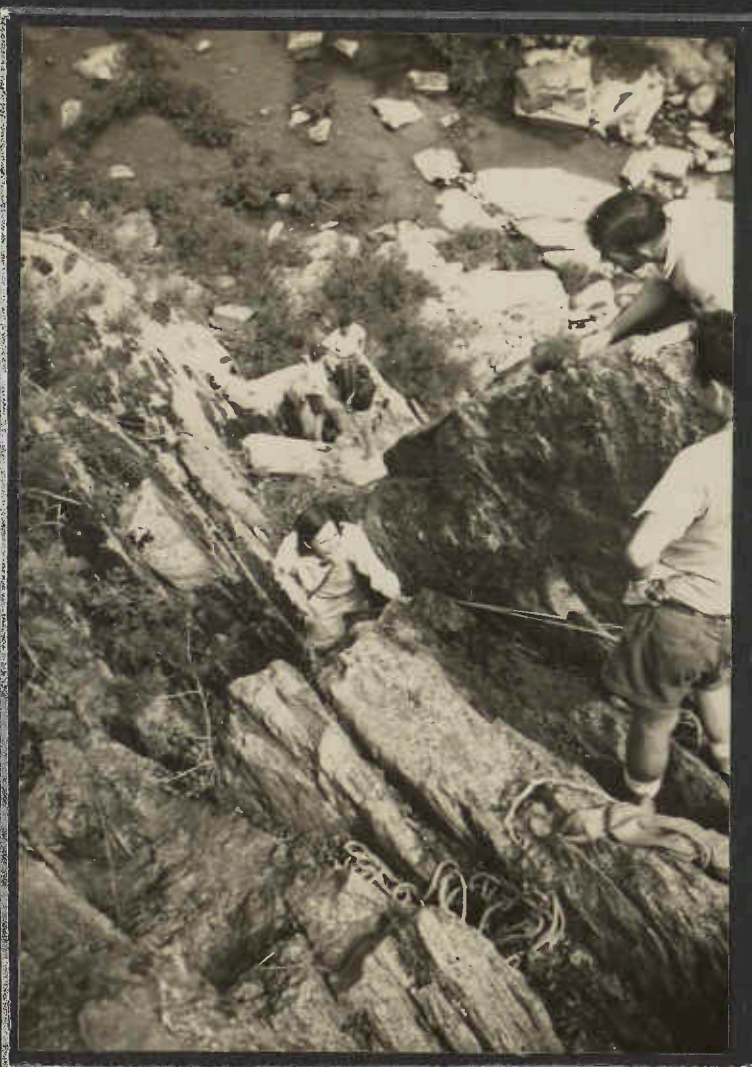
ROCK CLIMBING - GREAT FALLS

SEPTEMBER 10, 1939



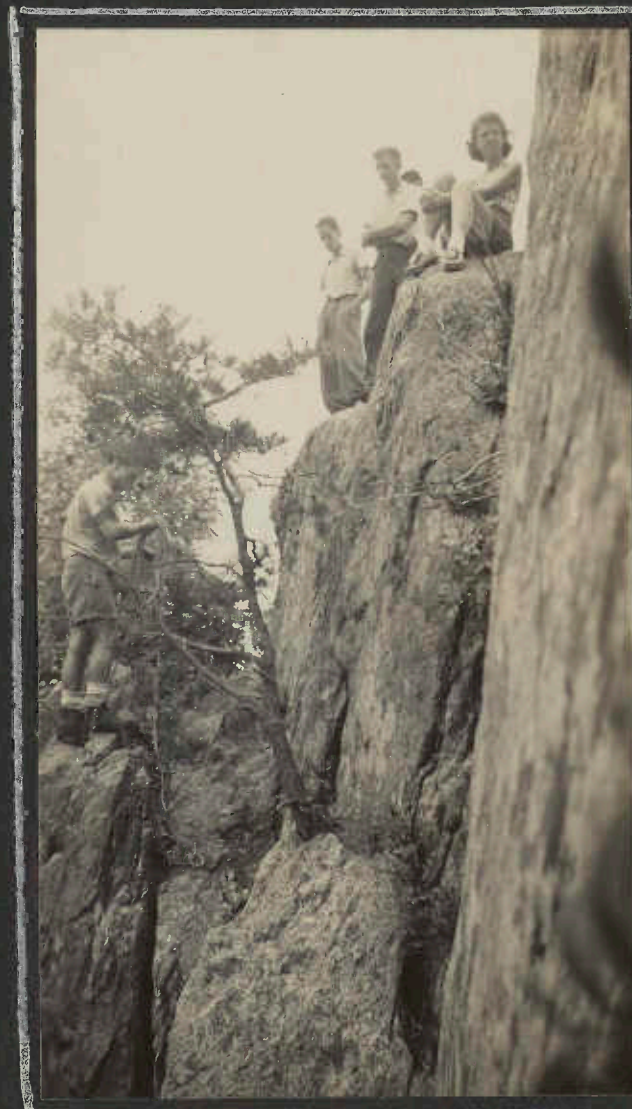
"UP" THIS WAY

WRR



AND VIRGINIA STARTS DOWN

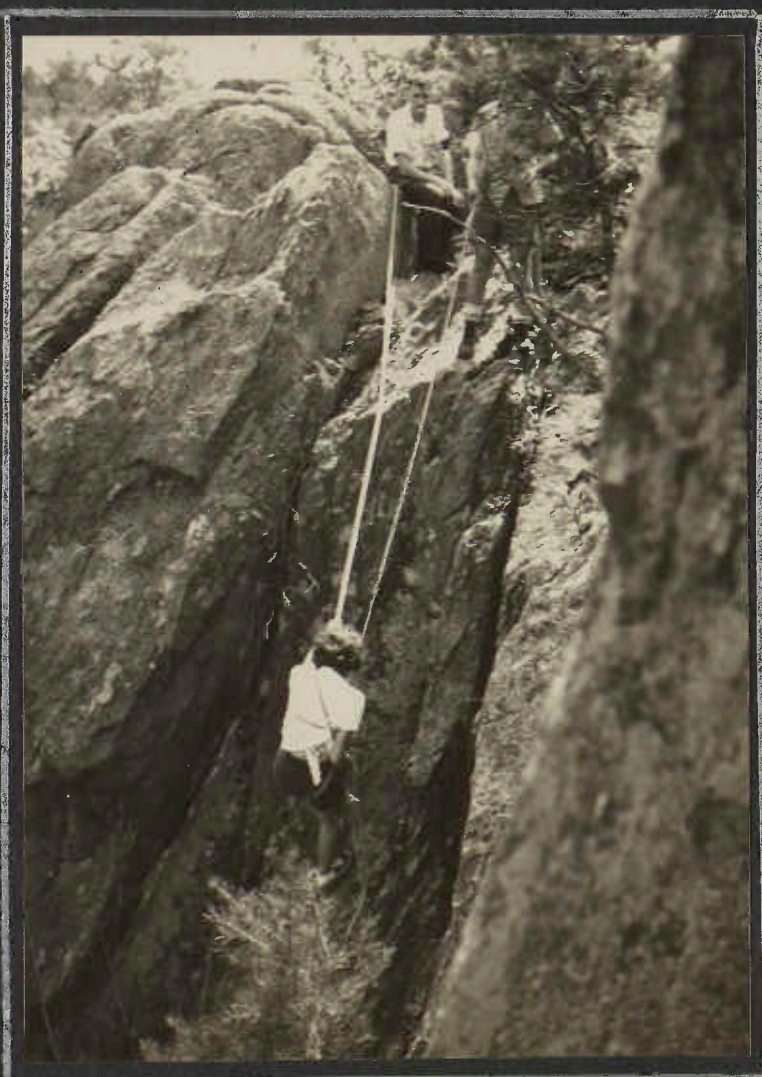
WRR



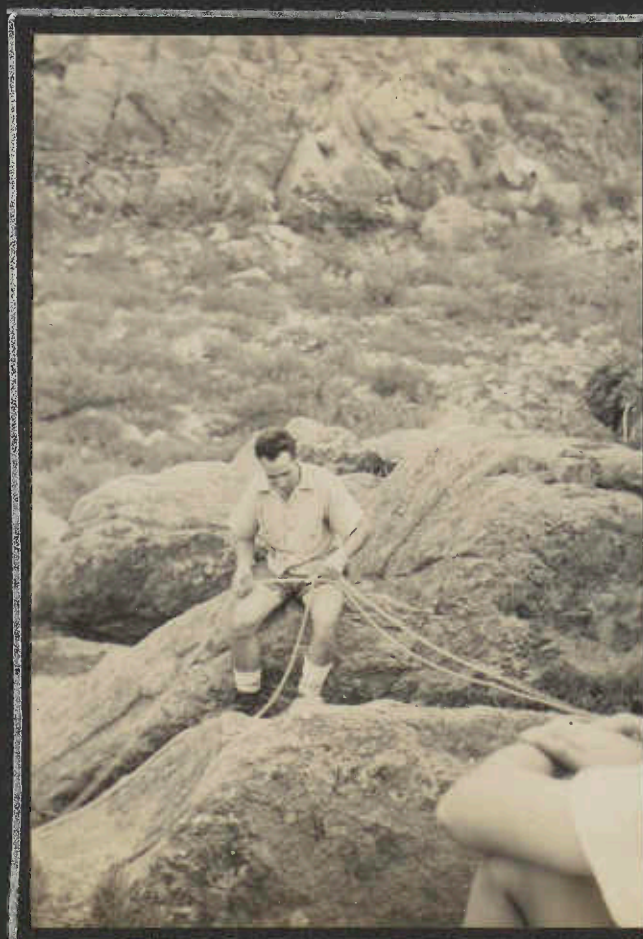
THE ROPE SEEMS TO BE INVOLVED

JC

NOTHING LIKE PLAYING SAFE --- JEAN SEEMS TO BE USING A HAWSER. DON REESE AND BILL KEMPER ABOVE



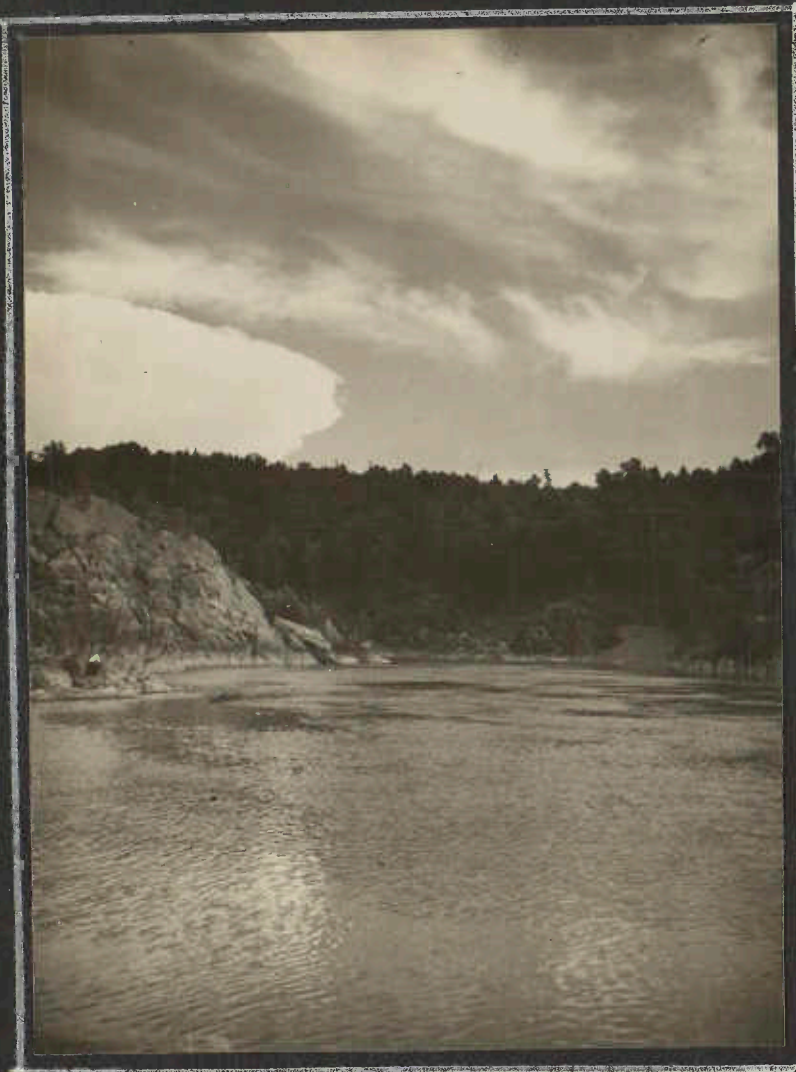
WRR



JC

WONDER WHOS BELOW? BILL TAKES IT CAREFULLY --

GREAT FALLS -- SEPT. 10, 1939

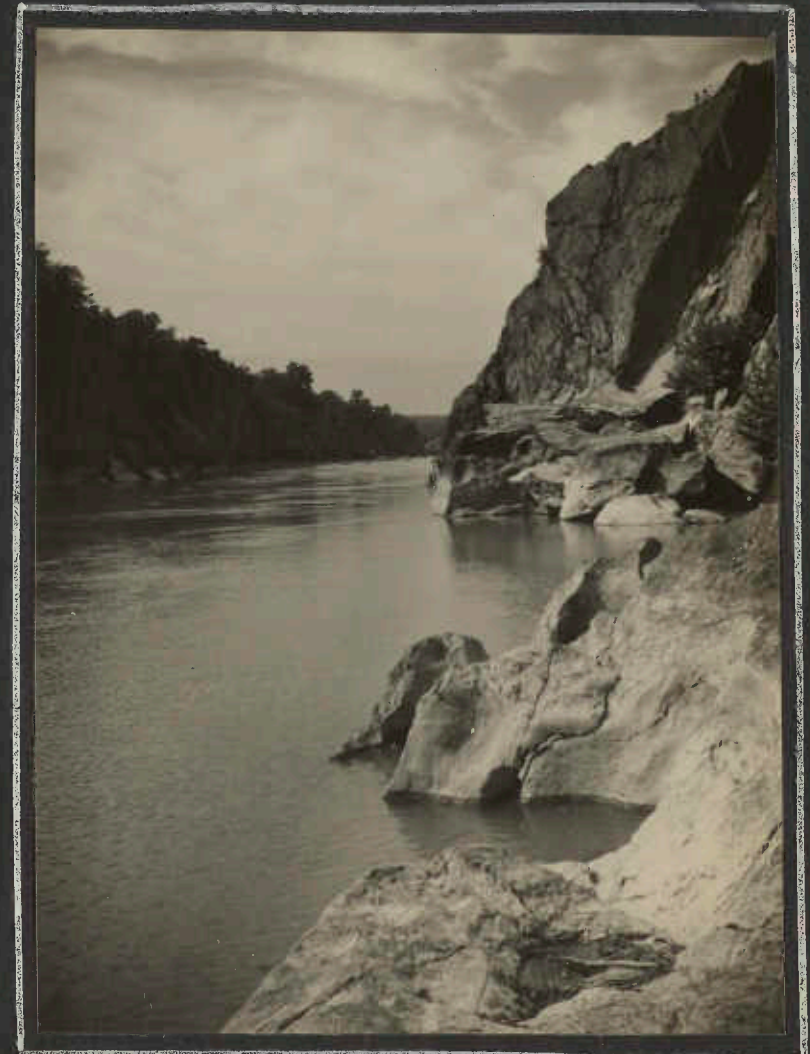


WRR

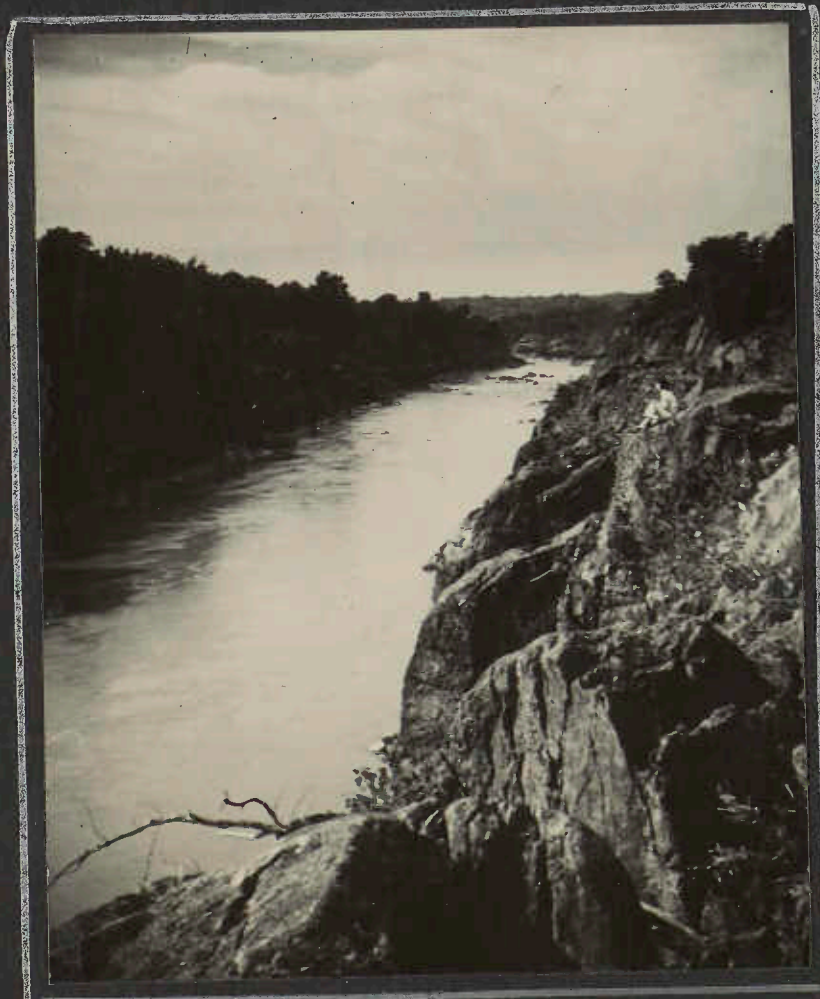


JC

HIKERS WANDERED ON DOWN THE POTOMAC --- TAKING IN THESE SCENES --



WRR



WRR



LATE EVENING AT THE RAPIDS

WRR

WHITE ROCKS RIDGE - CENTER POINT KNOB
DARK HOLLOW SHELTER

SEPTEMBER 17, 1939



LOOKING NORTH ACROSS THE CUMBERLAND VALLEY. THAT'S BLUE MOUNTAIN (OR NORTH MOUNTAIN) BACK THERE IN THE HAZE WITH LAMB'S GAP SOMEWHAT TO RIGHT OF CENTER.



THE TRIP LEADER, IN HIS CUSTOMARY SNAPPY ATTIRE, CHECKS THE RECORD AT THE "CREEKMORE MONUMENT" ON CENTER POINT KNOB



MT. KATAHDIN, MAINE 1025 mi.
MT. OGLETHORPE, GA. 1025 mi.

WHAT MORE IS THERE TO SAY?



LUNCH AND REST AT DARK HOLLOW SHELTER



OUR FRONTIERS HAVE BECOME LESS RUGGED THAN THEY USED TO BE --- LUNCH ON THE SIDE TRAIL TO THE CATOCTINS.
WORK TRIP - CATOCTIN - A LINK - OCT. 22, 1939

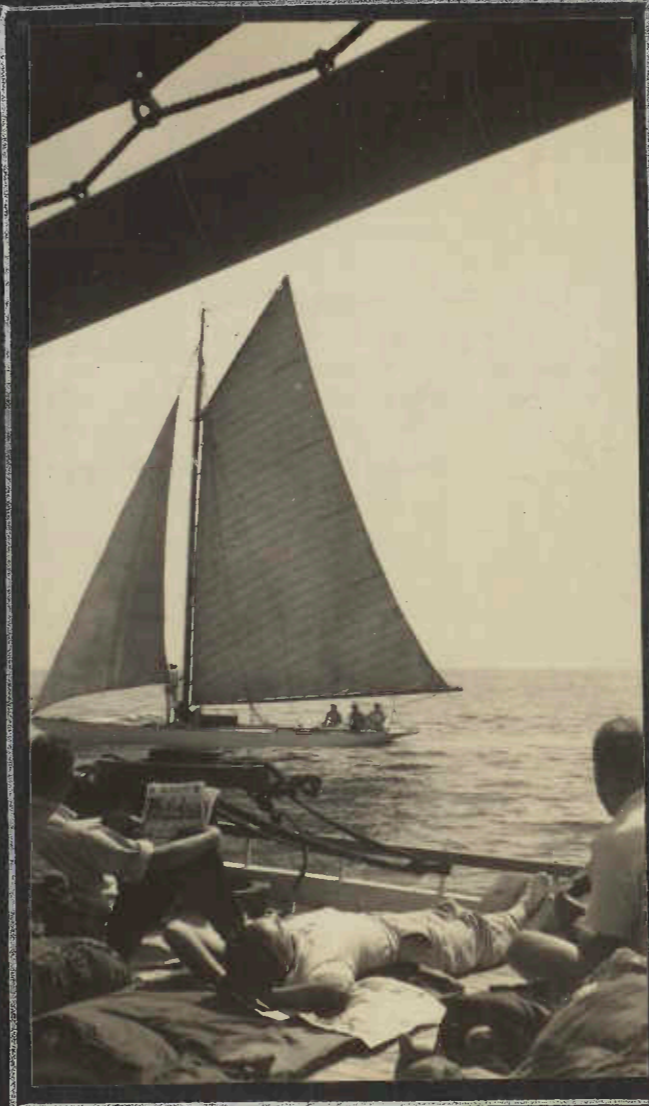
THE CRUISE OF THE "MAGGIE MCGUIRE"

SEPT. 23-24, 1939



STILL HARD AND FAST TO THE DOCK

WMR



OH FOR LIFE ON THE OCEAN WAVE!

JK



SEEMS TO BE LEONARD BARR ALOFT -

JK



COME ON, LET'S GET GOING. THE HARDY YORK MARINERS, PHIL GLADFELTER AND DICK HACKAMAN, SEEM ALL SET ON THE CABIN

LB



A BLONDE LETS HER HAIR DOWN WHEN THEY GET TO SEA. THE LIGHT IS

LB



PHIL GETS THE MUSIC BOX GOING -- IF YOU LOOK CLOSELY YOU'LL SEE THAT SOME OF THAT DUFFEL IS PEOPLE.

LB

"MOUNTAINEERS" ON THE CHESAPEAKE -
THE CRUISE OF THE "MAGGIE MCGUIRE"



LB

DO I HAVE TO GET UP?



WMR

A HARD NIGHT ON THE DECK -- OR A NIGHT ON
THE HARD DECK -- AND CELEBRATED HIKERS
LOOK LIKE THEY'VE BEEN OUT ALL NIGHT.
BET GRACE THINKS THE BOAT IS RANGE VIEW!



WMR

ARTHUR WEISS UNRAVELS HIMSELF
FROM THE MAINSAIL OR WHERE -
EVER IT WAS HE SPENT THE NIGHT.



JC

DOWN IN FRONT! THAT DOESN'T LOOK LIKE AN
MCM ROOF. NOTE AMAZEMENT OF PEOPLE
IN PASSING CRAFT --



WMR

ANY OLD PLACE FOR A REST -
OUT ON THE BOWSPRIT



JC

NO. 79 SAILS BY -

ON THE
 "MAGGIE MCGUIRE"
 SEPTEMBER 1939



USUAL SAILBOAT SCENE

JC



LB



LB

PEGGY MAGEE SEEMS TO BE
 THE RETOUCHING ARTIST



JC

FRANK IS ---- LONESOME



LB

JUDGING FROM THE
 HORIZON LINE, WE'D
 SAY THAT BILL IS
 "HALF SEAS OVER"
 INSTEAD OF JUST
 BRUSHING HIS TEETH

THE BLOB OF LIGHT THAT
 IS THE PLEIADES IS
 WELL UP IN THE SKY
 AND OTHER STARS ARE
 PINPOINTS OF LIGHT
 -- AND THAT FELLOW
 OF TWO PAGES AGO
 IS STILL UP ON THE
 MAST--

TWILIGHT FADES
 - AND PHIL IS
 JUST GETTING THE
 ACCORDION WARMED
 UP RIGHT.



WMR



JC

LAND OR SEA HO! WHICH?

DOUBLING GAP - BLUE (OR NORTH) MOUNTAIN

OCTOBER 1, 1939



RAINING BEAUTIFULLY - BUT VIRGINIA TRIES THE SWING

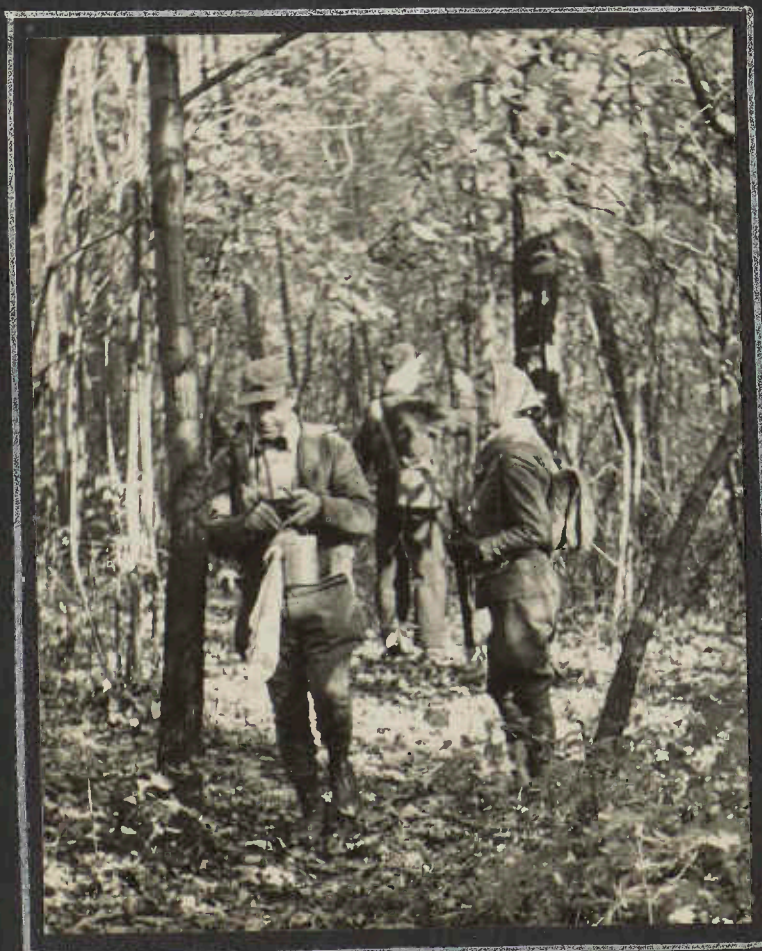


ON THE OTHER SIDE OF THE MOUNTAIN -- LEFT TO RIGHT - "JOE" BALL, MORGAN BARR AND HIS GIGANTIC PONCHO, EDITH BOND, ESTHER WIELITZ, RUTH LENDERKING, MERLE HEART, ALICE BROWN, ROLF VON AHLEFELT, MAX WOLF



EDITH READS THE SIGN --- RUTH SURVEYS THE COLLECTION --- FROM ELSEWHERE ---

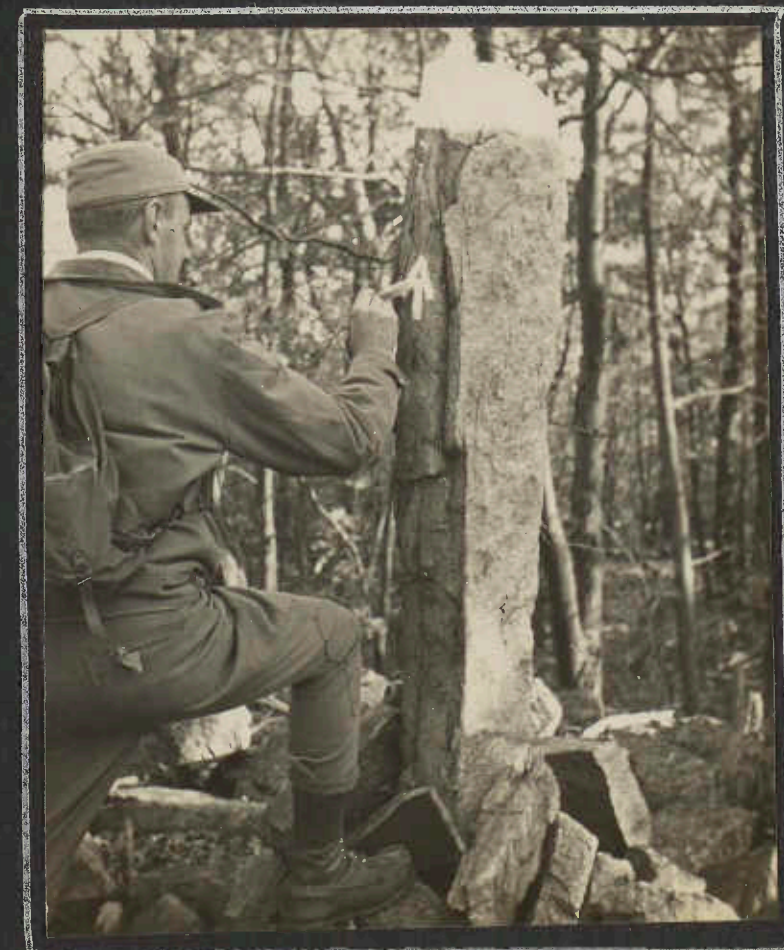
ON THE APPALACHIAN TRAIL - HECKERT'S GAP TO FORT HUNTER - OCTOBER 29, 1939



PART TWO OF THE HIKE TURNED OUT TO BE A WORK PARTY - CORRECTIVE WORK ON OVERBLAZED TRAIL



GEORGE REACHES OVER TO DO A BLACKOUT AS OS LOOKS FOR A BETTER PLACE TO HANG A WHITE BLAZE



REFRESHING A FADED MARKER -- NEAR FLETZ'S PASS - BLUE MOUNTAIN

Pictures - W.R. Roessler

"OLD RAG" - THE MECCA OF THE MCM



LUNCH GROUPS SCATTERED ALL OVER THE CLEARING BY THE SPRING ALONG THE RIDGE TRAIL.

WRR



MORE MOORES THAN USUAL --- MILDRED, HARRY, DOROTHY

WMR

THE EVERY-YEAR-AND-A-HALF BIG TRIP - OCTOBER 15, 1939



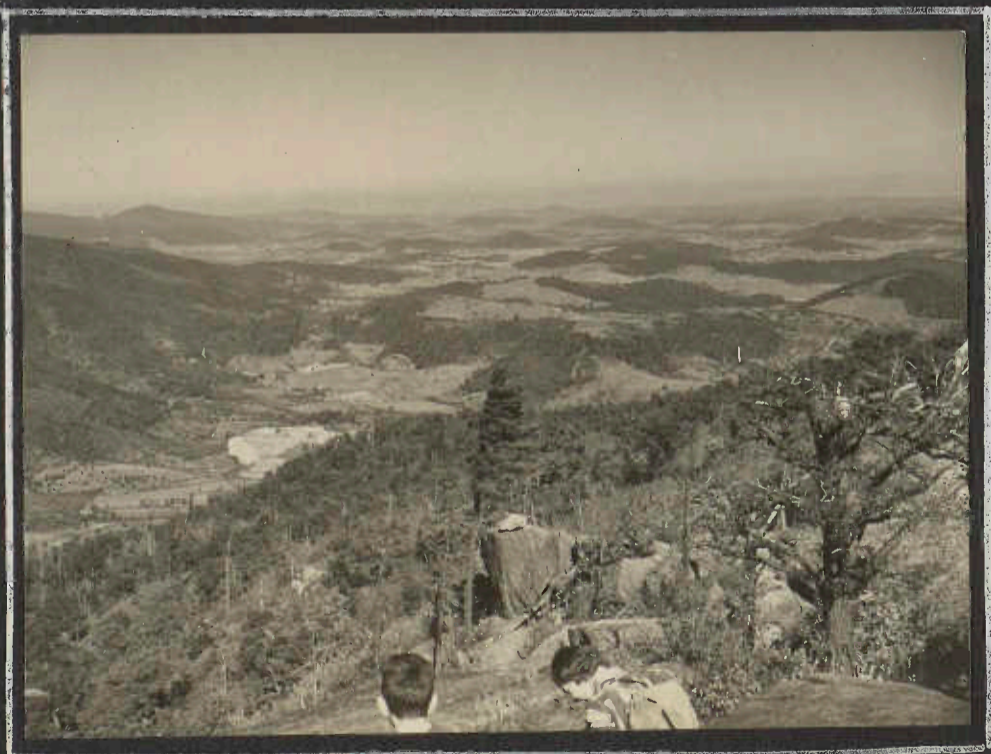
GRACE WAGNER DOES THE DISHES -

WRR



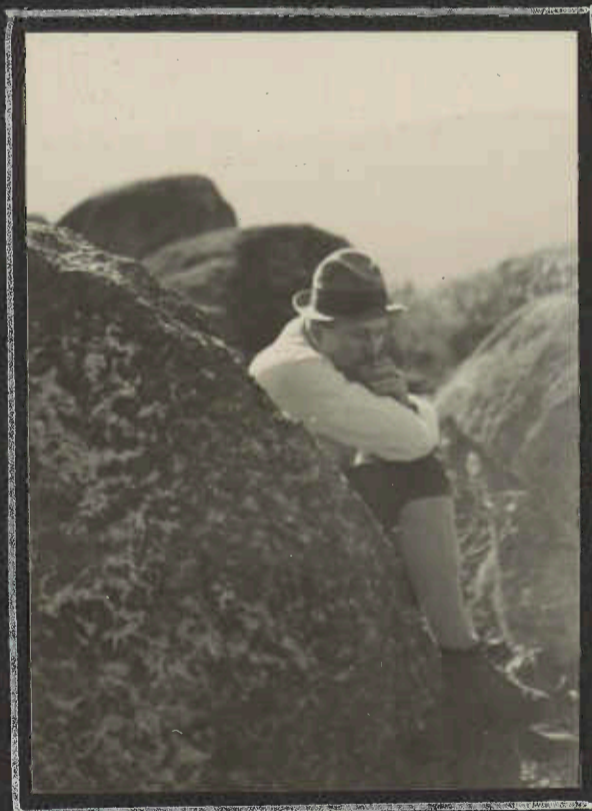
GEORGE KAIN AND PHIL GLADFELTER INVESTIGATE THEIR LUNCH -- AND EAT IT --

WMR



LOOKING NORTH FROM THE RIDGE

WRR



WES TAYLOR, TRIP LEADER,

WMR



WATCHING ROCK-CLIMBERS

WMR

"OLD RAG" - OCTOBER 15, 1939



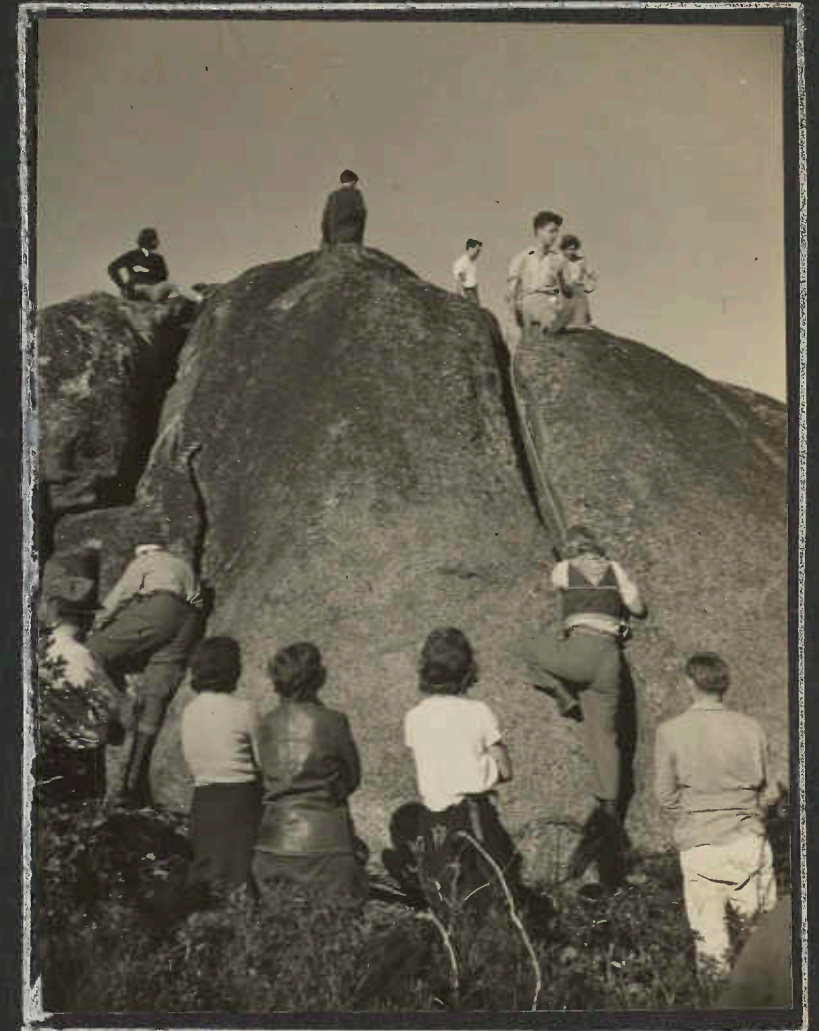
ALONG THE RIDGE -

WRR



REAL CLASSY ROCKS THESE -- THE TRAIL COMES THROUGH AT LOWER LEFT -

WRR



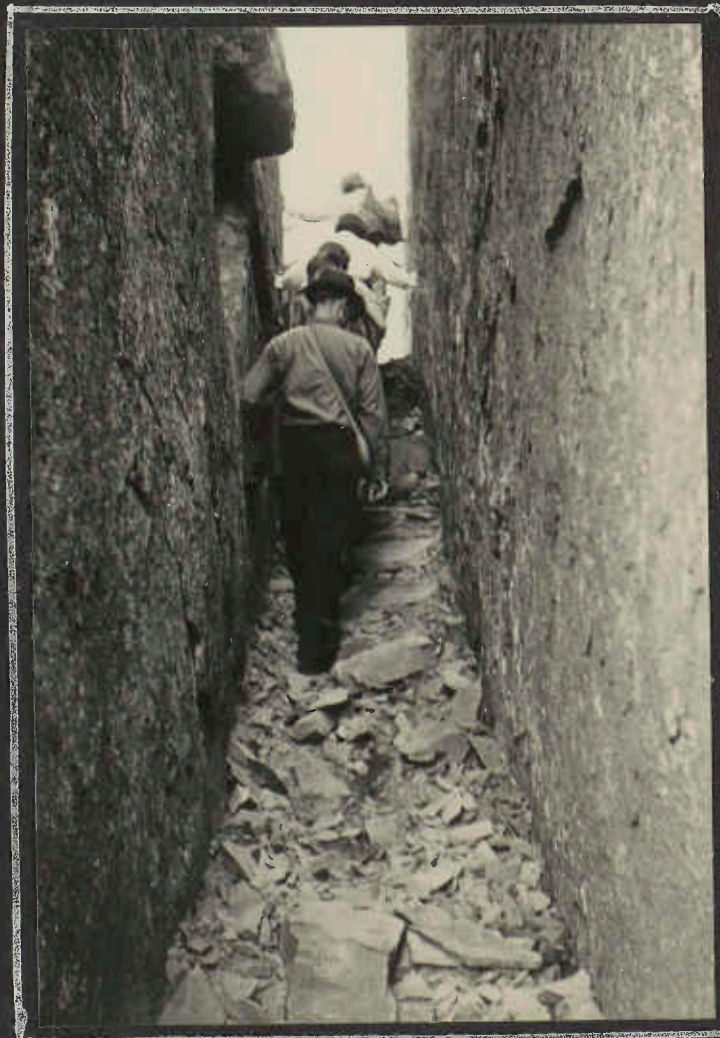
ALICE IS TRYING IT THIS TIME - WITH AN INTERESTED GALLERY WATCHING

WRR



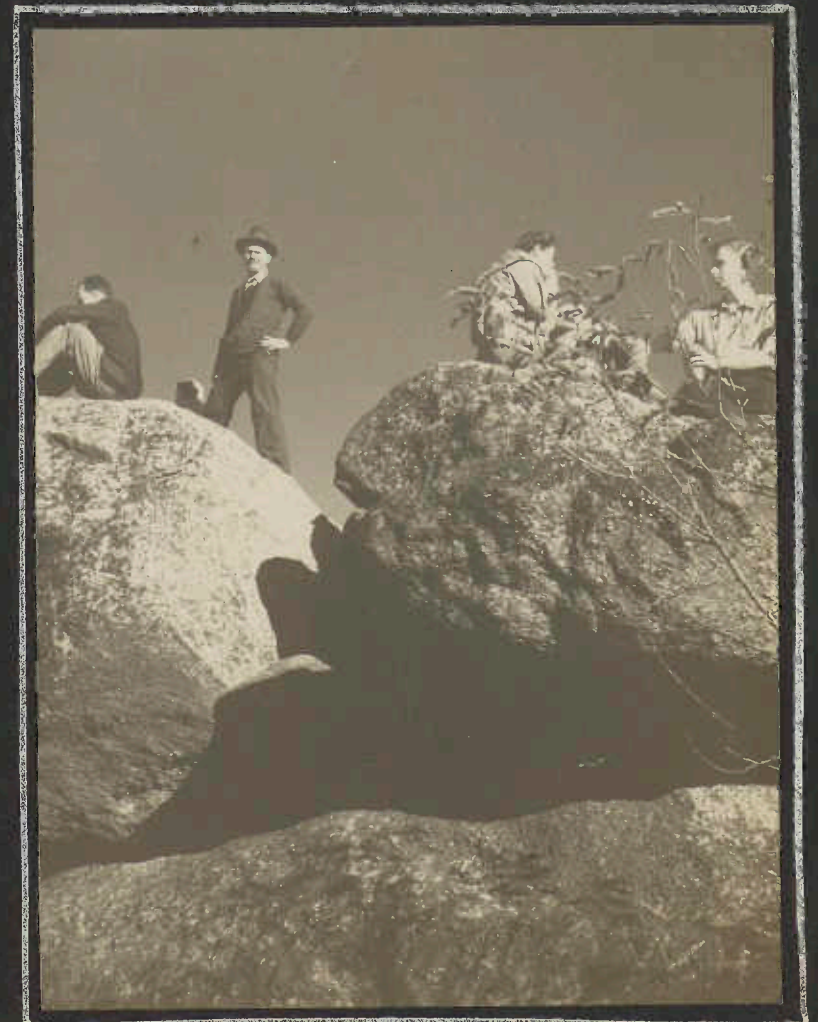
OS LETS THE ROCK CLIMBING GO HANG AND CALLS ON MILDRED AND WINNIE

WRR



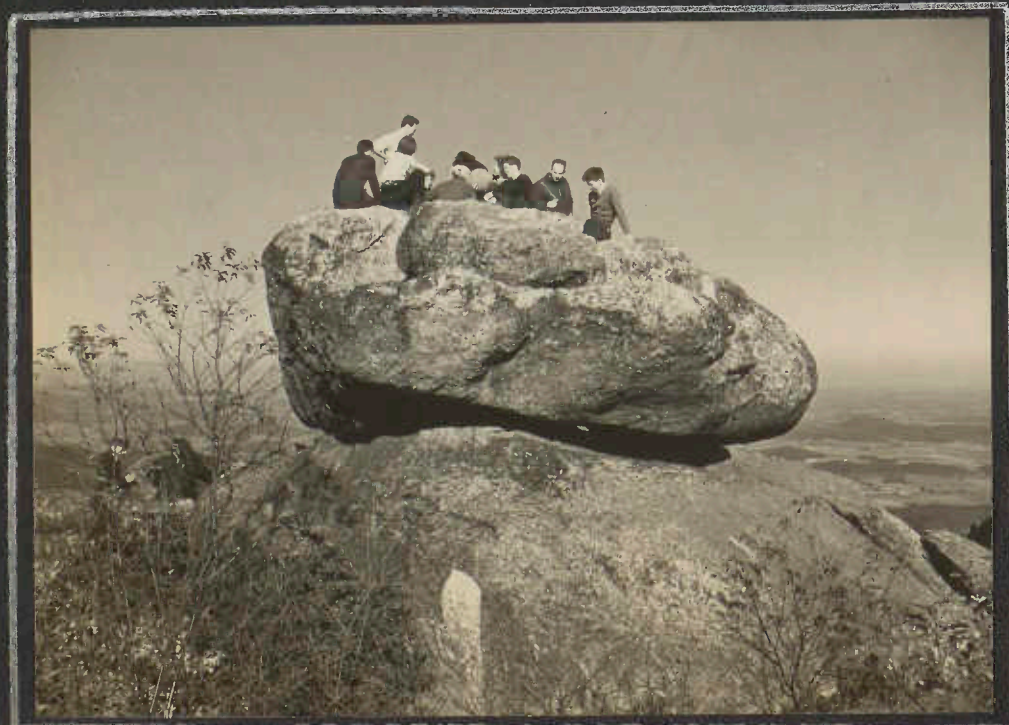
THE BLUE-BLAZED TRAIL GOES STEEPLY UP AND YOU EMERGE ON THE OTHER SIDE OF THE MOUNTAIN

WRR



ON THE VERY CREST -

WRR



THERE'S ROOM FOR MORE THAN ONE ON TOP -

WRR

THE "FOUR CLUBS" CATOCTIN TRIP

NOVEMBER 11-12, 1939

THE POTOMAC APPALACHIAN TRAIL CLUB OF WASHINGTON, THE MARYLAND APPALACHIAN TRAIL CLUB, OF HAGERSTOWN, THE YORK HIKING CLUB, AND OUR OWN "M.C.M."

SPEND A GALA WEEKEND IN THE CATOCTIN RECREATIONAL AREA ON CATOCTIN MOUNTAIN, NEAR THURMONT, MARYLAND.

SOME 160 PEOPLE WERE UP FOR THE GAY SATURDAY NIGHT PROGRAM, AND ABOUT 140 STAYED OVERNIGHT.

FIRST NINE PAGES OF PICTURES OF THIS TRIP BY HANS MARK - OF THE SUNPAPERS. OTHERS BY MEMBERS OF OUR OWN PHOTOGRAPHY GROUP.



BALTIMORE'S --

DELEGATION OF SIXTY ODD REQUIRED SEVERAL CARS AND A BUS, THE ARRIVAL OF THE LATTER DULY NOTED AND RECORDED BY THE GENTLEMEN OF THE PRESS AS HERE SHOWN --



FRANK, EDITH, AND RUTH, SEEM TO BE HAVING A BIT OF DIFFICULTY WITH BAGGAGE -- ALICE HAS ALL OF HERS -- FLORENCE SAW THE FLASHLIGHT GO OFF -- ROBERT LATANE' IS EMPTY-HANDED -- AND ROLF -- WELL -- IT'S ONLY THE BEGINNING, FOLKS --

CAN'T DO MUCH WITH WHITE INK ONCE IT'S ON - SO WE'LL RUN THE CORRECTION OVER HERE -- -- -- IT'S DOROTHY CREEKMORE



PROMINENT BALTIMOREANS IN THE SUPPER LINE INCLUDE FLORENCE BURNER, DOROTHY MERRYMAN, HARRIET CASPARI, MRS. LATANE' LEONARD BAHR, OLIVER ISAAC, AND -- -- ROLF VON AHLEFELDT.

"FOUR CLUBS" CATOCTIN TRIP
NOVEMBER 1939



WRR

THE MULTITUDE ASSEMBLED AT HI-CATOCTIN, LISTENING TO CROWDER INTRODUCE THE REAR GUARD AND GIVE ALL KINDS OF INSTRUCTIONS AS TO WHAT TO DO AND WHAT NOT TO DO AND WHY.



WRR

ORVILLE WAXES ELOQUENT ---- BUT YOU SEE SOME-ONE IS WAITING TO APPLY THE QUIETUS IF HE HARANGUES THE MOB TOO LONG.



WRR

"NOW, LET'S SEE IF I CAN GET THIS UP BEFORE THEY GET HERE"



WRR

"OK, NOT YET IN SIGHT. --- I HOPE I'VE GOT IT POINTING THE RIGHT WAY. ---"



WRR

THE DARLING HOUSE

THE SLUMBERS OF ITS INTERESTING GHOST DISTURBED BY THE FOOTFALLS OF A HUNDRED HIKERS --



WRR

INTO THE VALLEY - FROM THE PORCH OF THE DARLING HOUSE.

"FOUR CLUBS" CATOCTIN TRIP

"SUPPERTIME"



ELIZABETH FISHER IS SHOWN TO THE CAKE BOX WHILE THE LADLER SHOWS DUE SKEPTICISM AS TO THE PROPRIETY OF TWO CUPS FOR PEACHES



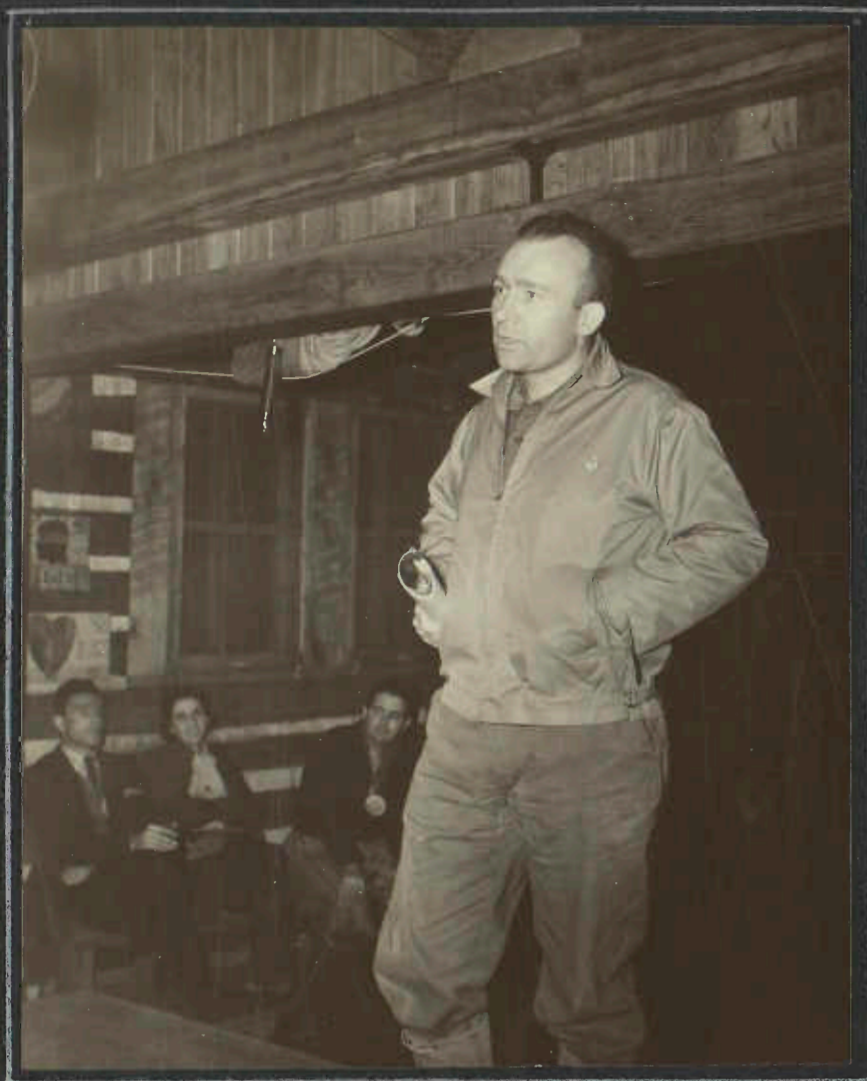
THERE WAS A LINE FOR DISHWASHING -

IGNORING THE MALE DISHWASHERS, WE SPOT ESTELLE WETZLER - AND LOOK AT THAT DISHTOWEL - ALMA RUTLEDGE, ELIZABETH FISHER, AN UNIDENTIFIED ONE, AND MARY HYLAN -



EATING EXPRESSIONS -- NOTE THE COY ONE [↑] OF SALLY RUTH, OF YORK

FOUR CLUBS CATOCTIN TRIP



MYRON AVERY
PRESIDENT OF THE P.A.T.C.
TELLS OF THE APPA-
LACHIAN TRAIL AND
THE CHAIN OF SHELTERS

- BACKGROUND NOTE -
LOOK AT THE SIGN
ABOVE THE CHOIR BENCH



JOE WINN
OF WASHINGTON

DOLEFULLY RECITES
THAT "THE GERMS
WILL GET YOU IF
YOU DONT WATCH OUT."

ALEC SEEMS TO HAVE
THE BENCH ALONE NOW
- AND THE REST OF
THE SIGN - - - - -

JOE WINN - VENTRILOQUIST -

HOLDS HIS AUDIENCE SPELLBOUND - FOR
INSTANCE - RITA BAKER ON THE FIRST BENCH -
AND RUTH LENDERKING AND OLIVER ISAAC
ON THE SECOND. OVER AT THE EDGE OF
THE PICTURE OS HEARD ENJOYS, BUT
DOROTHY MORE, TO HIS RIGHT IN THE ROW
BEHIND, IS EITHER VERY SAD OR VERY
MUCH INTERESTED. WE DONT KNOW
THE UNAPPRECIATIVE JUVENILE -

FAR INTO THE NIGHT-



LISTENING TO THE QUARTETTE

BALTIMOREANS IN THE PICTURE - IN THE FLOOR CIRCLE - ESTELLE WETZLER IS NO. 4 - THEN, PAST THE GUITAR - EDITH BOND, DOROTHY MOORE, OSBORNE HEARD, DICK ROESSLER, RITA BAKER, MERLE HEART, AND MARY HARTFORD. BEHIND HER - WITH THE WHITE SHIRT SLEEVES - IS WINSLOW HARTFORD, AND AT EDGE OF PICTURE, FLORENCE BURNER. ORVILLE CROWDER, WITH THE WATERMELON PANTS IS STANDING RIGHT OF CENTER, AND NEXT TO HIM - PONDERING WHAT? - IS WINNIE RODEMEYER. HARRIET CASPARI IS IN THE DOORWAY, NEAR THE "HELP PREVENT FIRES" SIGN WHILE LARRY BRUNS AND MIRIAM RITTENHOUSE ARE TOPPED ONLY BY ROBERT LATANE', INVESTIGATING A MOUSE IN THE RAFTERS.



THE HAGERSTOWN QUARTETTE
EXCELLENT SONGSTERS - GRAND ENTERTAINMENT -



THE VIRGINIA REEL

BILL KEMPER IS REELING WITH A PERFECT STRANGER. AS JACK KAESTNER, WATCHING IS TOYING WITH THE IDEA OF BLOWING THE WHISTLE. RAYMOND CREEKMORE IS SKETCHING - AND NOT DRAWING A CHECK -

FOUR CLUBS CATOCTIN TRIP



COMING THROUGH ON THE VIRGINIA REEL --
THE MAN WITH THE HAT IS ROLF - - -



AT THE OTHER END OF THE HALL



THE DAWN PATROL
MAKING UP SANDWICHES WHOLESALE FOR P.A.T.C. LUNCHES

THE FOUR CLUBS CATOCTIN TRIP



MRS. FLEMING SEEMS COMFORTABLE —

A GOOD NIGHT'S REST

IN ITS VARIOUS FORMS AND STAGES

TEMPERATURE- OUTSIDE - 26°.

MOST OF THE LODGES WERE EQUIPPED WITH SCREEN DOORS



ALICE IS APPARENTLY DOING WELL—



"CREEKY" - DESPITE COVERING WITH EVERYTHING BUT THE DOILIES AND PLACING HIS SHOES IN THE TRADITIONAL MANNER — IS HAVING ONE {CENSORED!} NIGHT



FROM LEFT TO RIGHT- FRANK CALAFIORE AND OLIVER ISAAC HAVE DESERTED THEIR COTS FOR THE LESS-INTENSE COLD OF THE FLOOR

THE FOUR CLUBS CATOCTIN TRIP
ON THE SUNDAY HIKE -



AT HI-CATOCTIN - THE STARTING POINT
ORVILLE CROWDER GIVES ORDERS AND
INSTRUCTIONS AND INTRODUCES THE REAR
GUARD - LARRY BRUNS.

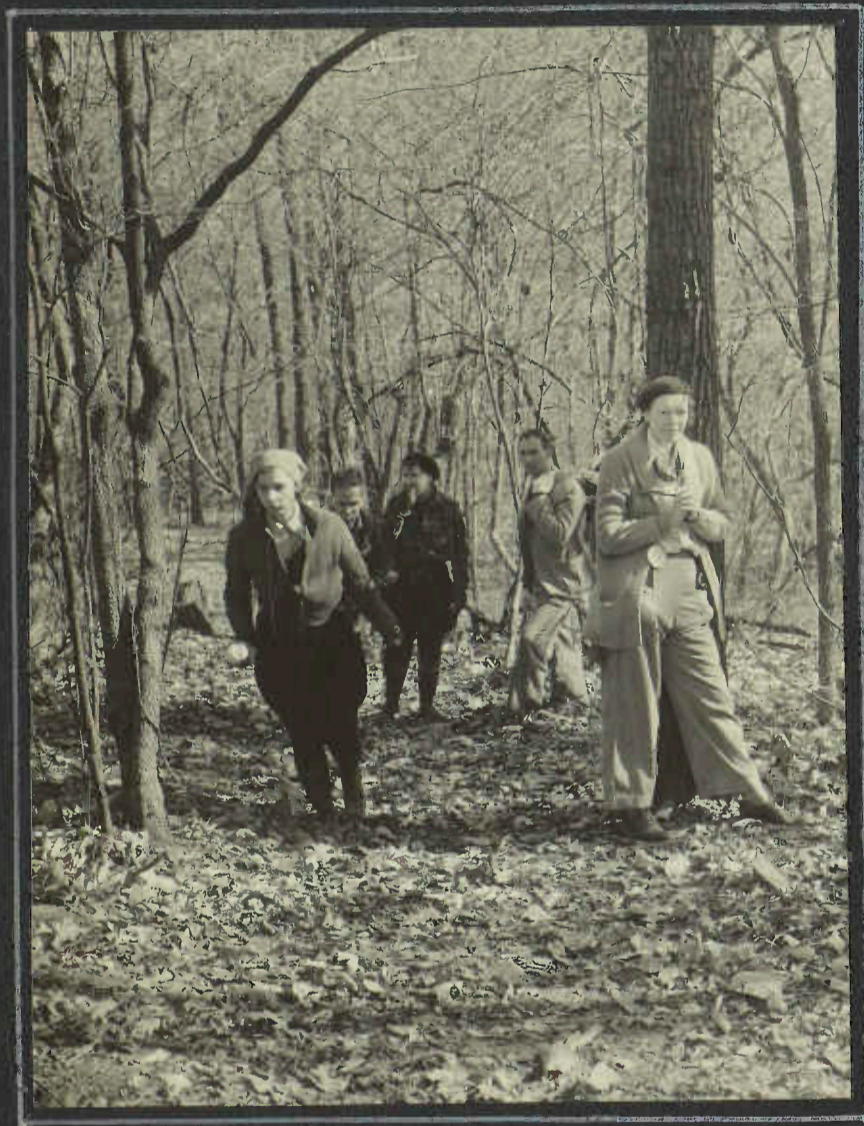


AT THE DARLING HOUSE - THERES A NICE MURDER
TO TELL ABOUT AND OS HEARD TELLS IN ALL ITS
GRISLY DETAIL THE STORY OF THE LADY'S UNTIMELY
DEPARTURE FROM THIS LIFE -

LOOKING INTO PLEASANT VALLEY
FROM MOUNT LENT, THE
SITE OF THE DARLING HOUSE



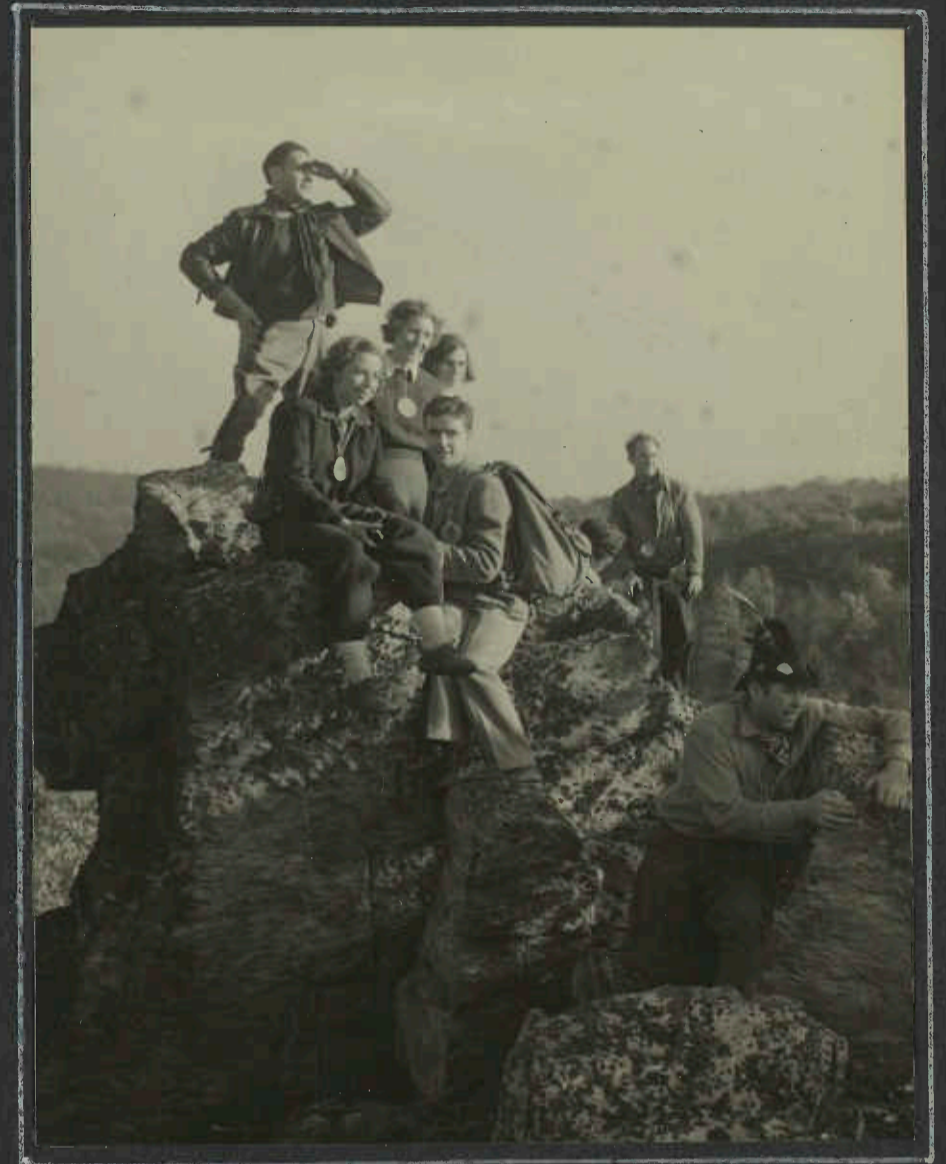
FOUR CLUBS CATOCTIN TRIP
ON THE SUNDAY HIKE



NEAR THE END OF THE LINE -
ON THE TRAIL WITHIN THE
CATOCTIN RECREATIONAL AREA.



THE PHOTOGRAPHER SAID THAT
HE WANTED THE FENCE IN
THE PICTURE - SO - -



ON RAVEN ROCKS

PHIL GLADFELTER IS HIGH MAN IN
THIS SCENE. DR. DONAL MURNAGHAN
IS STICKING CLOSE BY WINNIE
RODEMAYER, DOROTHY MOORE, AND
VIRGINIA ROBINSON. LEONARD
BAHR IS ON THE AFT ROCK. ANY
CLUE AS TO THE IDENTITY OF THE
MAN WITH THE PSEUDO-ALPINE HAT?

FOUR CLUBS CATOCTIN TRIP



ON THE DEVIL'S RACE COURSE
THE CATOCTIN LINK TRAIL LEADS ON ACROSS
HERE - FROM THE RECREATIONAL AREA TO THE
APPALACHIAN TRAIL -



LUNCH
JUST A FEW OF THE 108 HIKERS WHO MADE THE
7/4 MILES TO THE EATING PLACE - ON THE
SITE OF THE PROPOSED DEVILS RACE COURSE LEAN-TO.



TIME OUT FOR REPAIRS -
BILL ARNOLD DOCTORS THE
BLISTER ON PHIL GLADFELTERS
FOOT. THIS PICTURE RAN
193,000 COPIES -



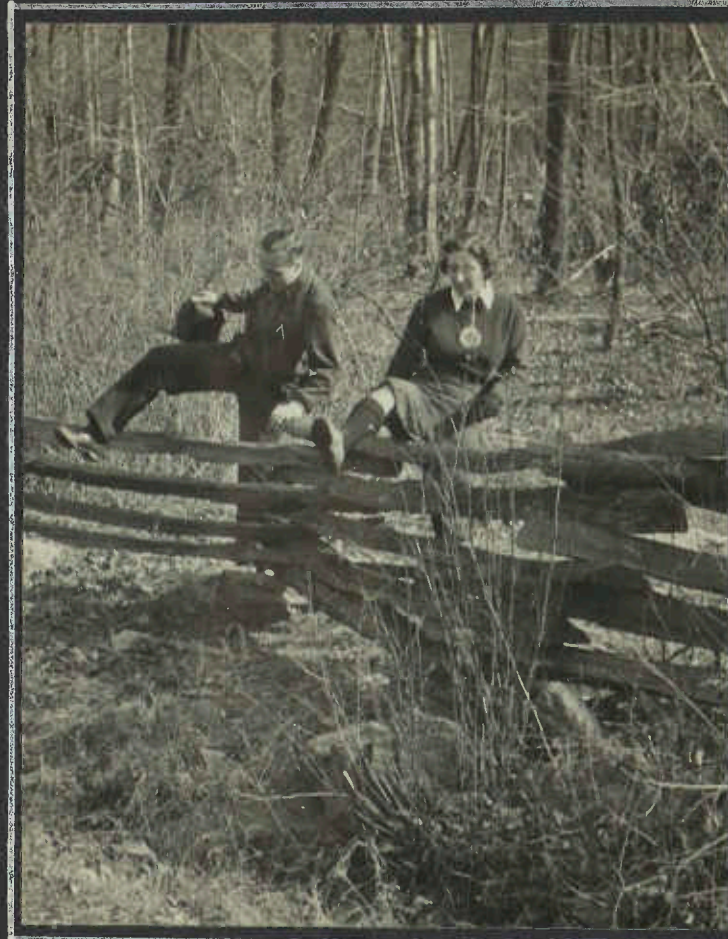
THE DOUBLE BLAZE -
THE TURN OF THE TRAIL -
THE HOMESTRETCH -

FOUR-CLUBS CATOCTIN TRIP - NOVEMBER 1934



WRR

"BESSIE, IT'S ALL OVER ---- AND TWO SHOTS RANG OUT ---- AND A SCREAM ---- TRAIL OF BLOOD TO THE WINDOW" ETC. ETC. OS WARMS UP TO THE RETELLING AS THE AUDIENCE IS RAPT IN ATTENTION.



WRR

DOROTHY MOORE AND HANS MARK, THE SUN PAPERS PHOTOGRAPHER, TAKE THE FENCE IN STRIDE



LB

THE DEVIL'S RACECOURSE



LB



LB

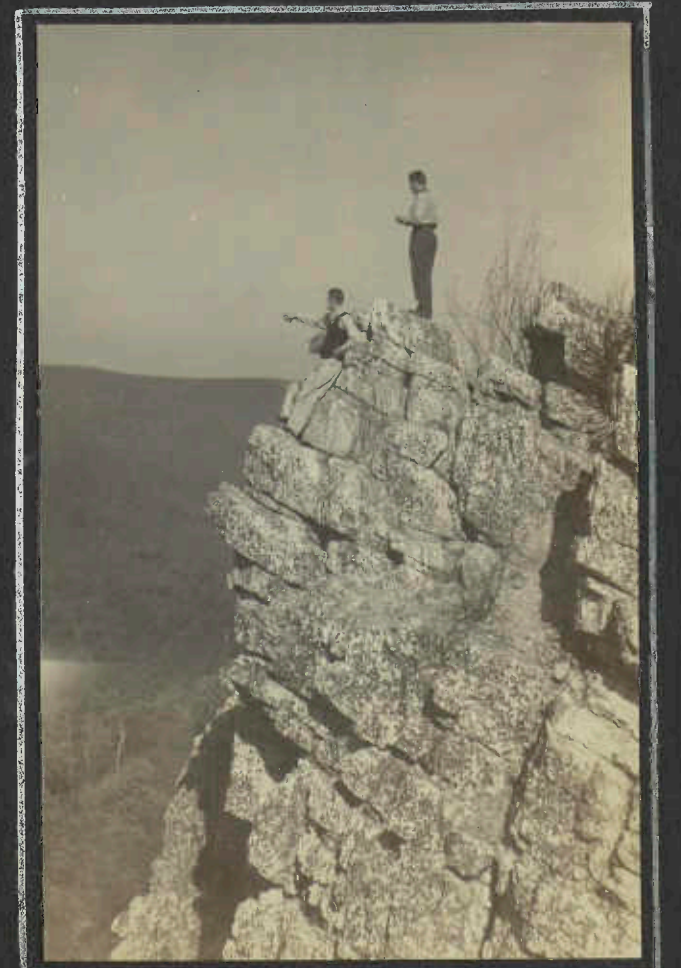
WITH HAGERSTOWN FRIENDS -



LB



LB



ON RAVEN ROCKS

JC

FOUR CLUBS CATOCTIN TRIP

NOVEMBER 11-12, 1939



WRR

LUNCHTIME- AT THE SITE OF THE PROPOSED DEVIL'S RACECOURSE LEAN-TO.



FB

GRACE WAGNER, EDITH BOND, AND 'PETE' HICKS TAKE IT EASY --



WRR

SOME PEOPLE- NOTABLY CLAUDE GRAHAM AND MORGAN BARR- LOOK AROUND INSTEAD OF -- OR MAYBE IT'S AFTER -- EATING.



JC

WINNIE POINTS TO A FAST-DISAPPEARING BUNNY AS MERLE INVESTIGATES HIS LUNCH BOX RITA SMILES SWEETLY ---- BUT WE DIDN'T GET THE STORY.



WRR

PHIL GLADFELTER'S FOOT, PUBLICIZED FAR AND WIDE, GETS ROLF'S TENDER CARE --- NOT THE WAY THE "PRESS" HAD IT --



JC

FRANK AND DICK --- ALSO THINKING -- OR MAYBE DREAMING --



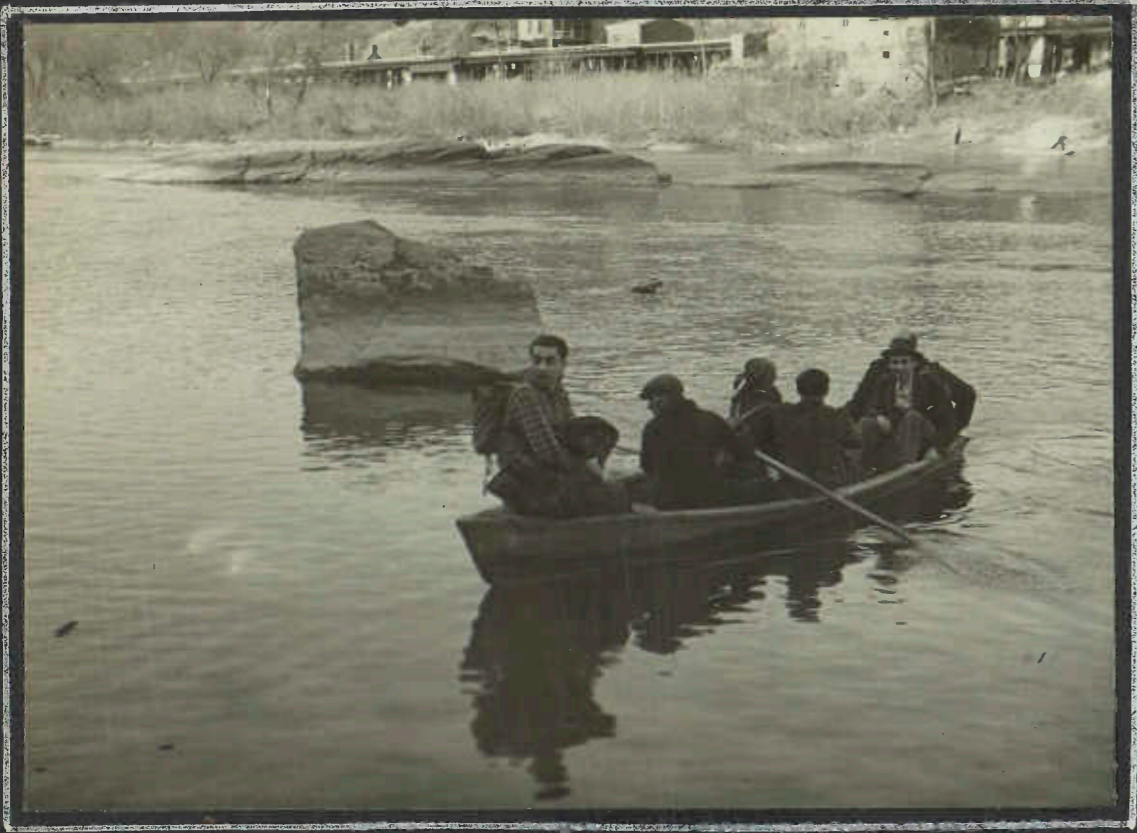
WRR

NEAR THE END OF THE LONG HIKE - FRANK, ALEC, AND JEAN -

HARPERS FERRY - SHORT HILL - BRUNSWICK

NOVEMBER 26, 1939

CROSSING THE SHENANDOAH



THE MOVABLE A-T.
FRANK LIKES TO SEE WHERE HE IS GOING. OLIVER
TAKES IT QUITE GAYLY -



SUNLIT SHENANDOAH

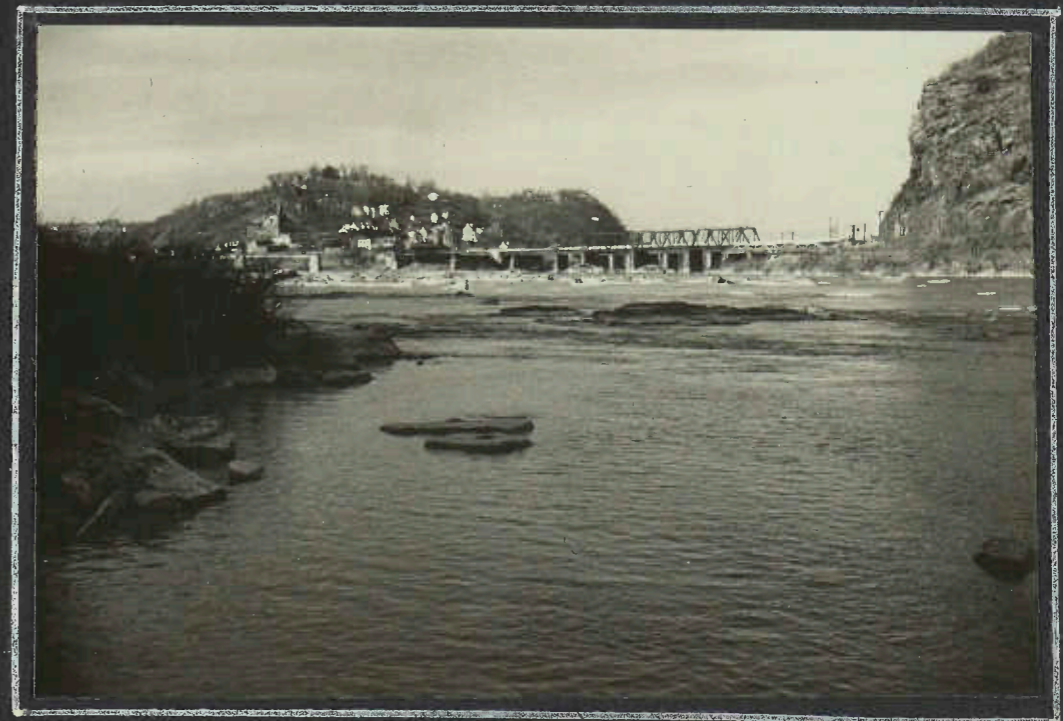
ALICE AND OS ASTERN - STERN VIEW TOO -
JEAN, ELEANOR, AND VIOLA, AMIDSHIPS



CANT FOOL US WITH THE SMOKED
GLASSES; IT'S VIVIAN HELLER
HIGH IN THE STERN OF THE BOAT.



THIS GROUP, AGROUND ON THE VIRGINIA SHORE, MADE
THE TRIP BY SCOW. THE FERRY LINES, LTD., HAD
TO PRESS ANOTHER CRAFT INTO SERVICE.



HARPERS FERRY - THE CONFLUENCE OF THE SHENANDOAH
AND THE POTOMAC, THE BRIDGES ACROSS THE
POTOMAC, AND, RISING ABRUPTLY, MARYLAND HEIGHTS.
THREE STATES IN THE PICTURE.



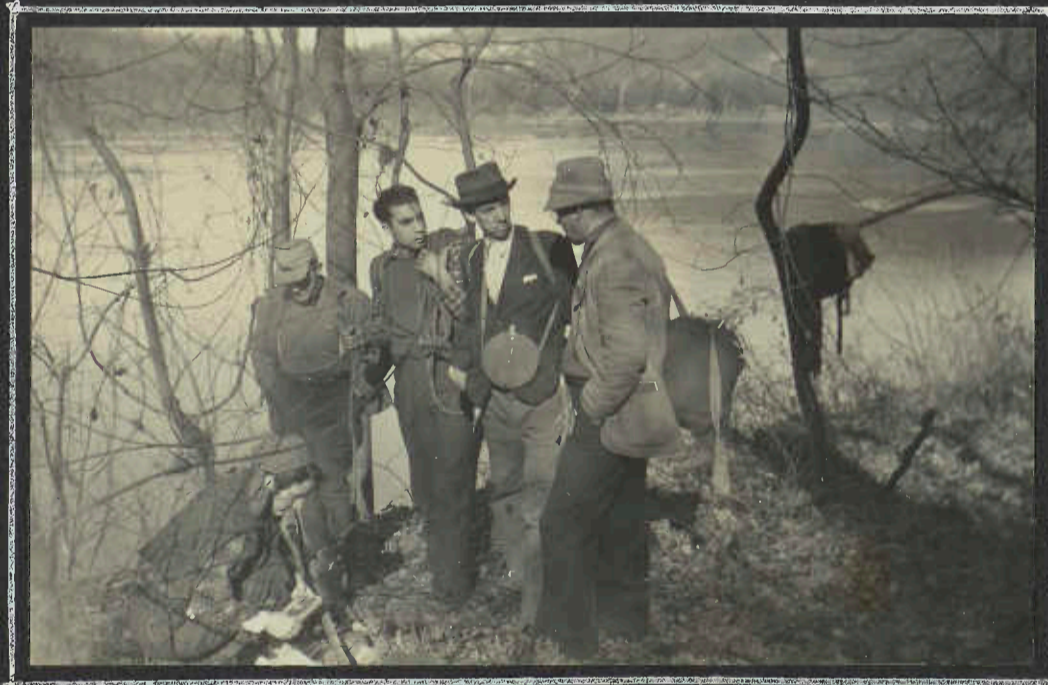
WRR

ACROSS THE FIELD, WITH
SHORT HILL DEAD AHEAD.
NOTE THE POTOMAC AT LEFT.



WRR

VIRGINIA GOES OVER TO HAVE
A CHAT WITH THE NAGS



JC

HELEN SPAULDING SHOWS
A GROUP OF APPARENT
SKEPTICS THAT SHE CAN
BUILD A FIRE



WRR

ANOTHER THREE-STATES
PICTURE - WITH WEST
VIRGINIA IN THE
MIDDLE. LOUDON HEIGHTS
RISING TO LEFT, MARYLAND
HEIGHTS (ELK RIDGE) TO
THE RIGHT.



WRR

LOOKING NORTH INTO MARYLAND -
ELK RIDGE AT LEFT, SOUTH MOUNTAIN
AT RIGHT.

SHORT HILL - NOVEMBER 26, 1939



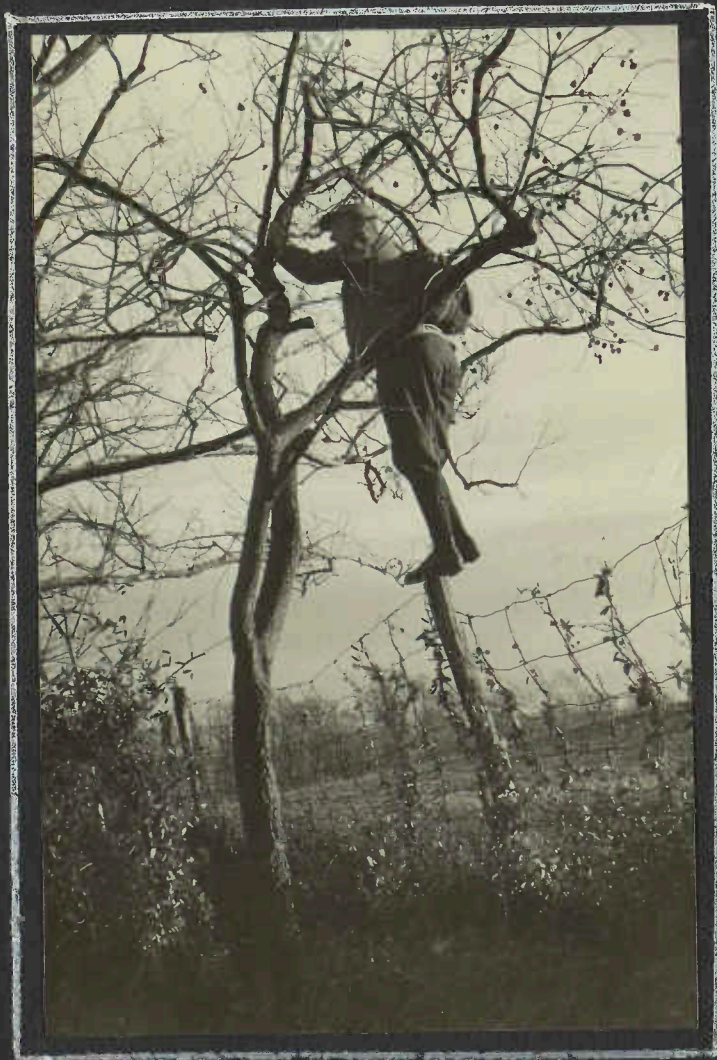
HIGH POINT ON SHORT HILL - WITH ATTRACTIVE SCENERY ON THE ROCKS. THE "DISTANT VIEW" IS MARYLAND, WITH THE CATOCTINS ON THE HORIZON.



A BEVY OF CHOICE FEMININITY ON THE HIGH POINT -- BUT WHO LET BIG GEORGE OUT -- TO GET UP THERE WITH THOSE BLONDES?



YEP-- THAT CANTEEN SEEMS TO HAVE HAD A QUIETENING EFFECT.

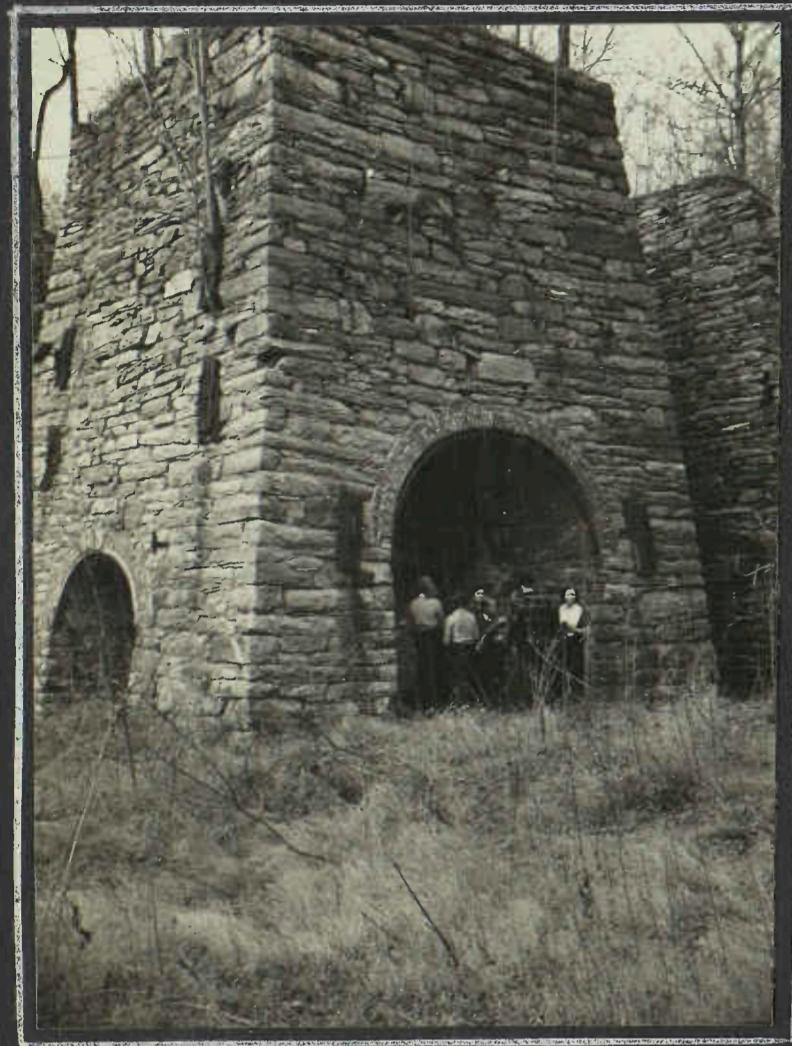


YES SIR - PERSIMMONS IS IRRESTABLE - AND AN OLD CAMPAIGNER GOES UP.



CRASH! WHO DID THAT? !

BOB'S HILL TRIP
IN THE CATOCTINS
DECEMBER 10, 1939



CATOCTIN FURNACE

WRR



THE GATE IS OPEN BUT NO "WELCOME" SIGN BIDS US ENTER.

WRR



ON THE OUTSIDE, AWAITING RETURN
OF THE COMMITTEE — — —

WRR



THE SCHEDULED HIKE OVER, WHAT NEXT —

WRR

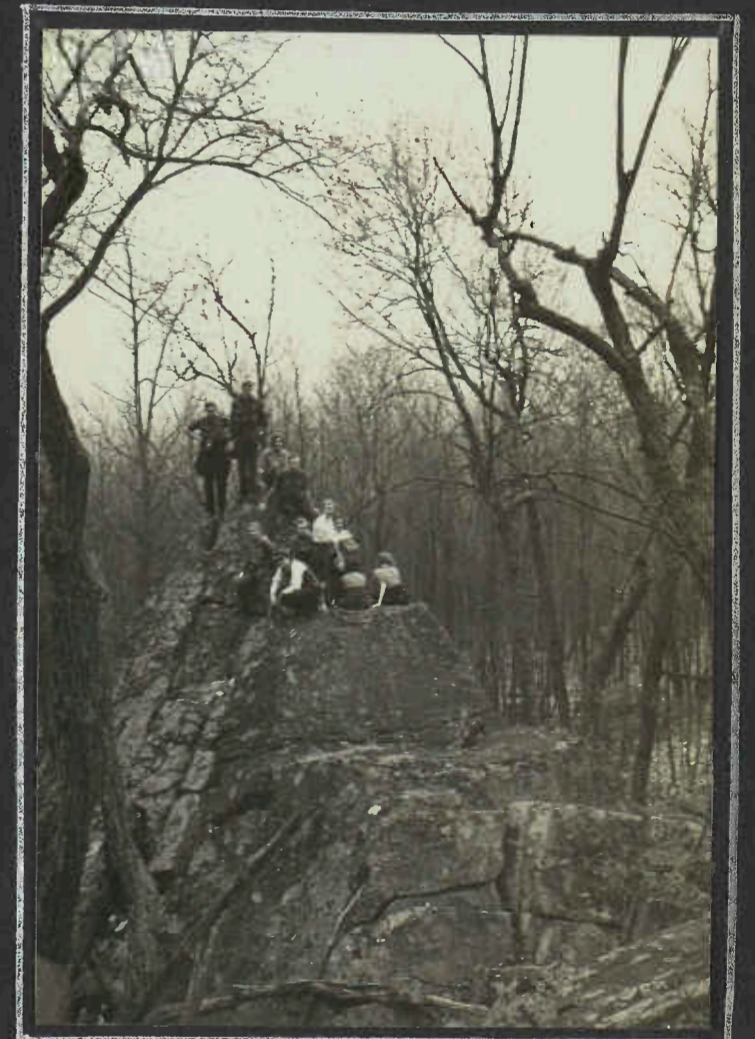


DUTCH BOY ROCKS

WRR



WMR



ON ISOBEL ROCKS

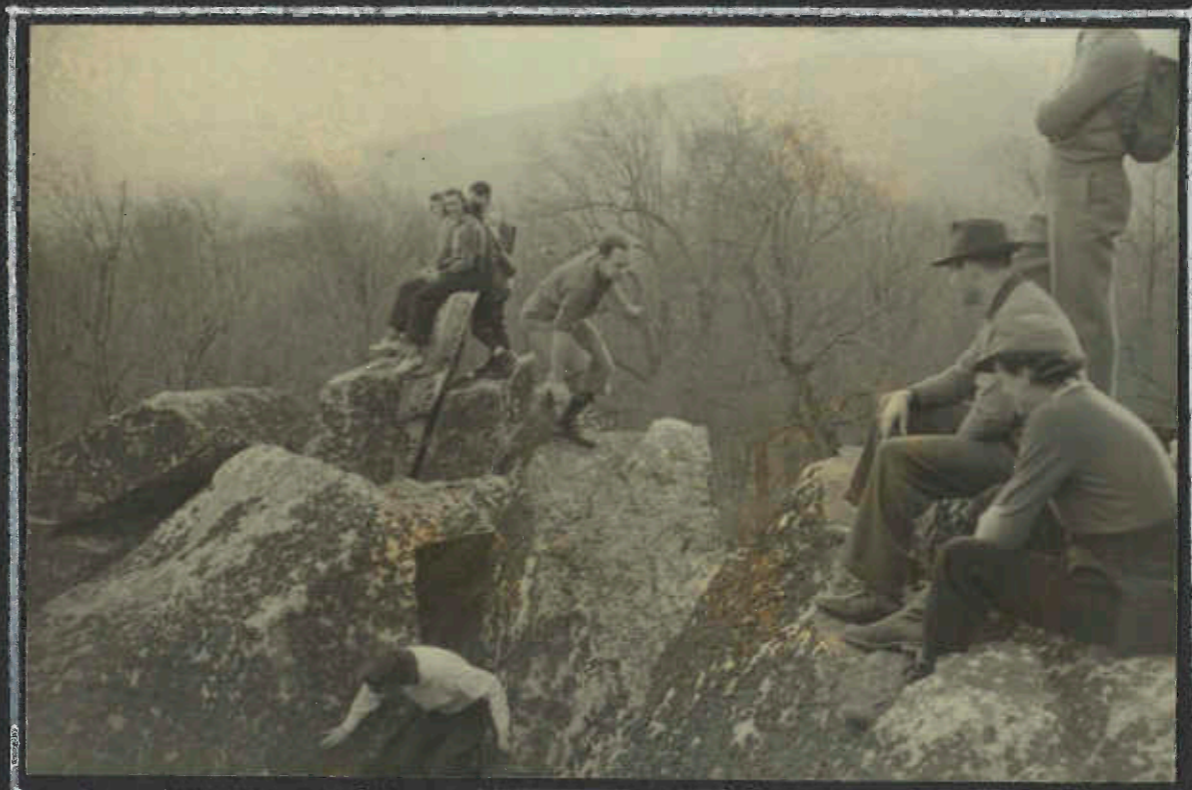
WRR

←
WHATEVER THE STORY BE, LARRY IS
UNIMPRESSED. P.S. — THE GIRLS
DONT BELIEVE IT EITHER.

BOBS HILL - IN THE CATOCTINS - DECEMBER 10, 1939



E.R.



E.R.

ON DUTCH BOY ROCKS - JASTROW LEVIN, WITH PLAID SHIRT, COMES INTO THE PICTURE -



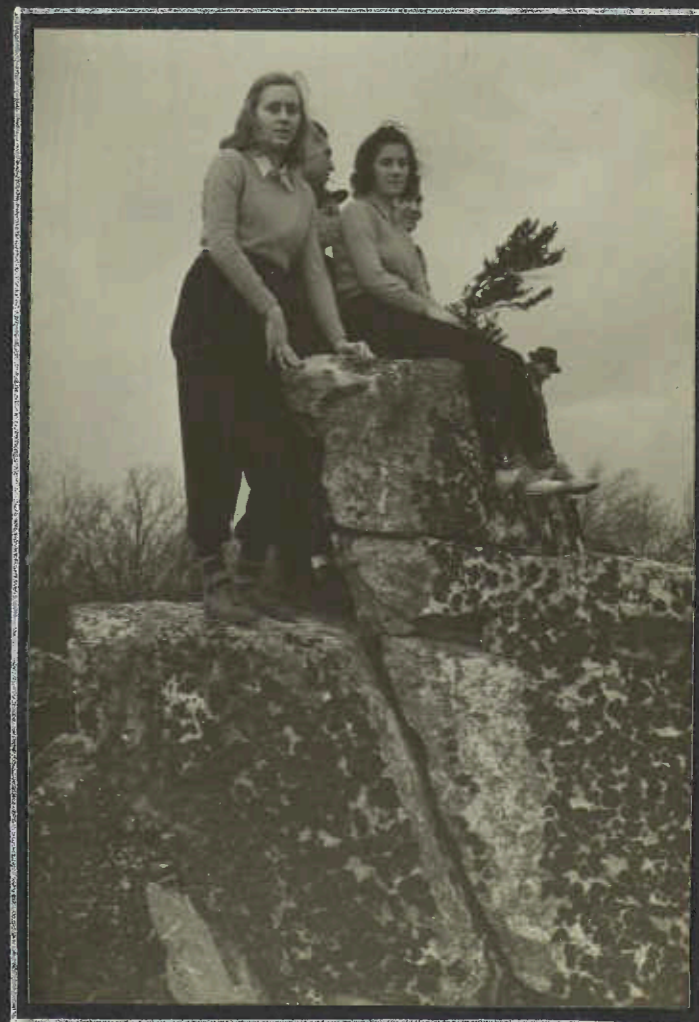
THEY GOT UP THERE

WRR



JC

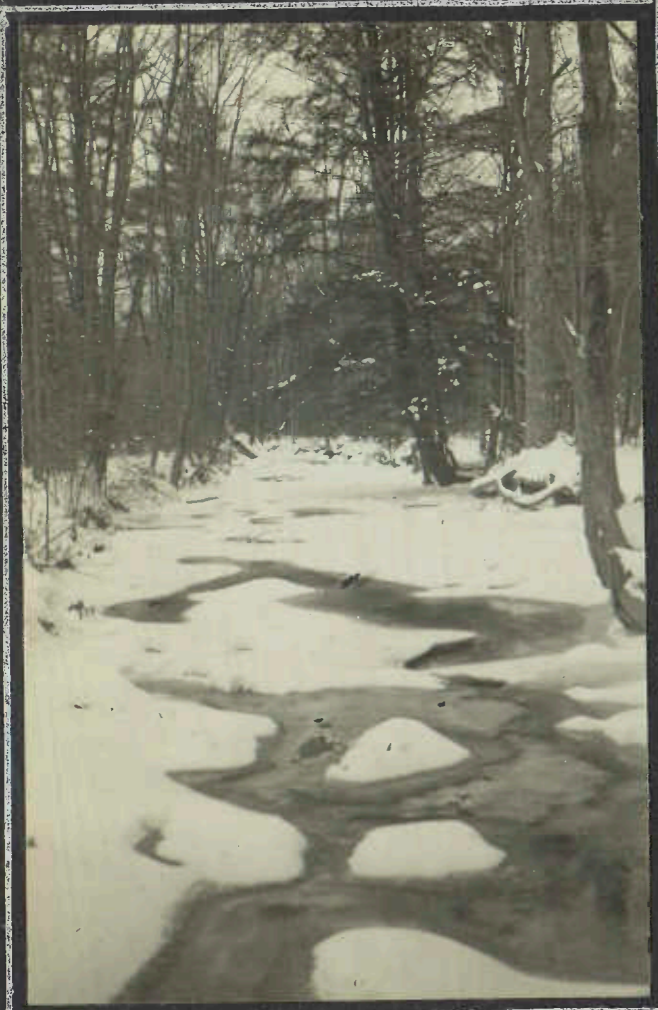
STANDING - MILDRED MOORE, ALICE BROWN, ELEANOR REINDOLLAR, VIVIAN HELLER, MIRIAM RITTENHOUSE. FRONT ROW - DOROTHY MOORE, WINNIE RODEMEYER, AMELIA BOLAND, AND VIOLA DAVIES. JUST AS A MATTER OF RECORD, THE PHOTOGRAPHER WAS JEAN CONNER.



YOUNGER THAN USUAL GUESTS -

WRR

1940 NEW YEAR'S TRIP
 PINE GROVE FURNACE SHELTER
 DEC. 30-31, 1939 - JAN. 1, 1940



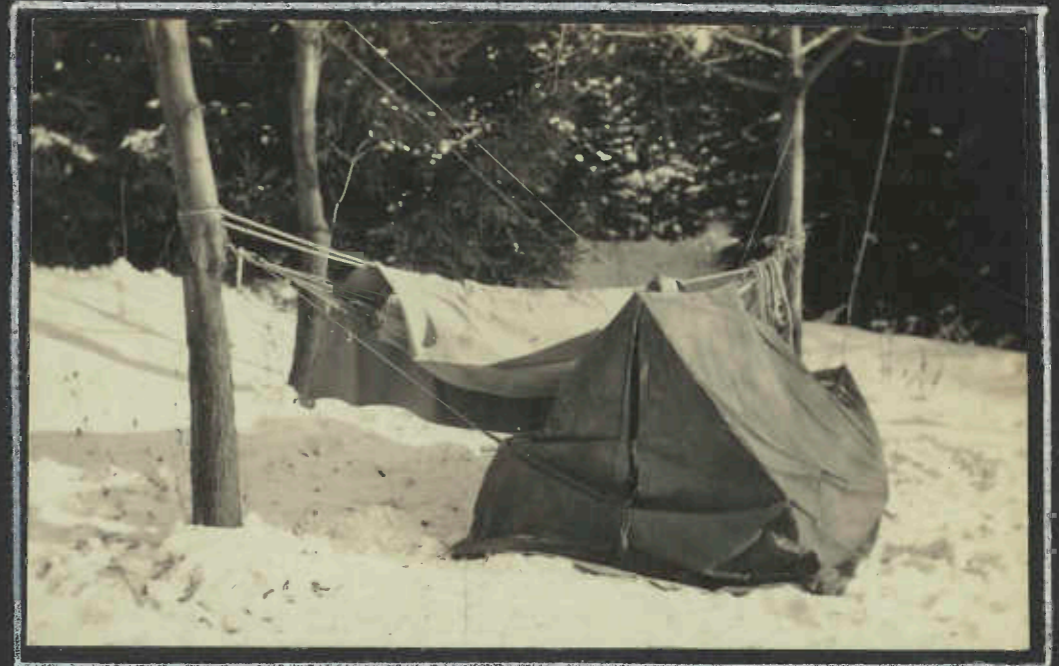
WMR

THE STREAM BELOW THE SHELTER



WMR

LUNCH -- BETWEEN SKATING AND TOBOGGAN PERIODS -- IT'S ALL RIGHT -- LARRY SWALLOWED THE SKATE KEY --



JC

CHARLES ST. AVENUE EXTENDED -- WAY EXTENDED. BILL'S TENT -- AND THE HAMMOCK WHERE GEORGE CONNER HANGS OUT --



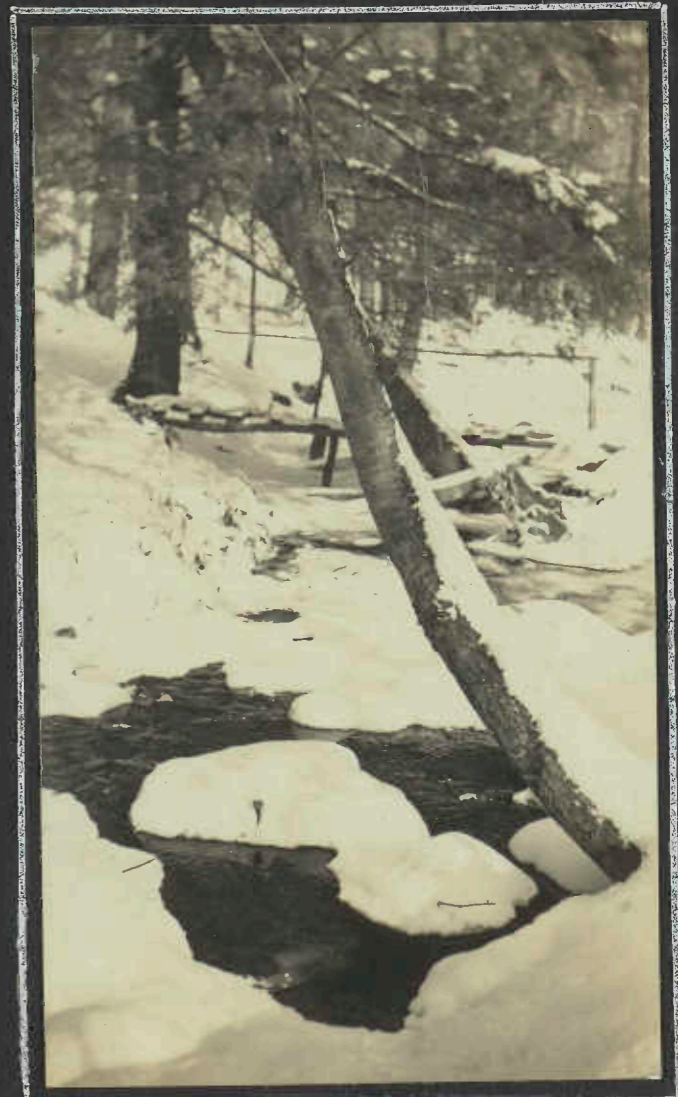
WMR

PREPARING TO JOURNEY TO THE SKI AND TOBOGGAN GROUNDS. RITA'S EARLY 1940 VERSION OF WINTER WEAR MEETS THE EYE --



FB

UNLOADING LARRY'S CAR AT CALEDONIA PARK. YES -- ALL OF THESE PASSENGERS RODE UP IN IT --



JC

THE BRIDGE ACROSS THE MOAT -- SCENERY AT THE SHELTER --

1940 NEW YEAR'S TRIP

THE SKATERS AT FULLER LAKE --



FB

NORMALLY--THE PLATFORM SPORTS A DIVING BOARD --- BUT WHEN IT'S LIKE THIS-- WELL- GET THEM ON, GIRLS. WE'LL ADMIT WE DONT KNOW WHETHER THAT'S A SPARE LEG (FOR USE WHEN OTHER GETS COLD SKATING) OR A STRAY BOOT BEHIND MILDRED.



WMR

REMOVAL OF MORE SNOW IS IN ORDER AND FLORENCE MUSTERS THE MOP SQUAD.



WRR

AND THEN, ON WELL-DEFINED PATHS, THE SKATING BEGINS.



JC

LOOK-- WINNIE IS FREEZING -- YOU CAN SEE HER SHIVER EVEN ON A STILL PICTURE -- AND THEY MANAGED TO GET DICK ON HIS FEET STEADY ENOUGH TO POSE.



FB

RITA COMES DOWN SO FAST THAT IT'S ALL A BLUR -



WMR

THE SNOW IS PILED HIGH AND THE PATHS GO AROUND LIKE THE TRACK IN A CHRISTMAS GARDEN.

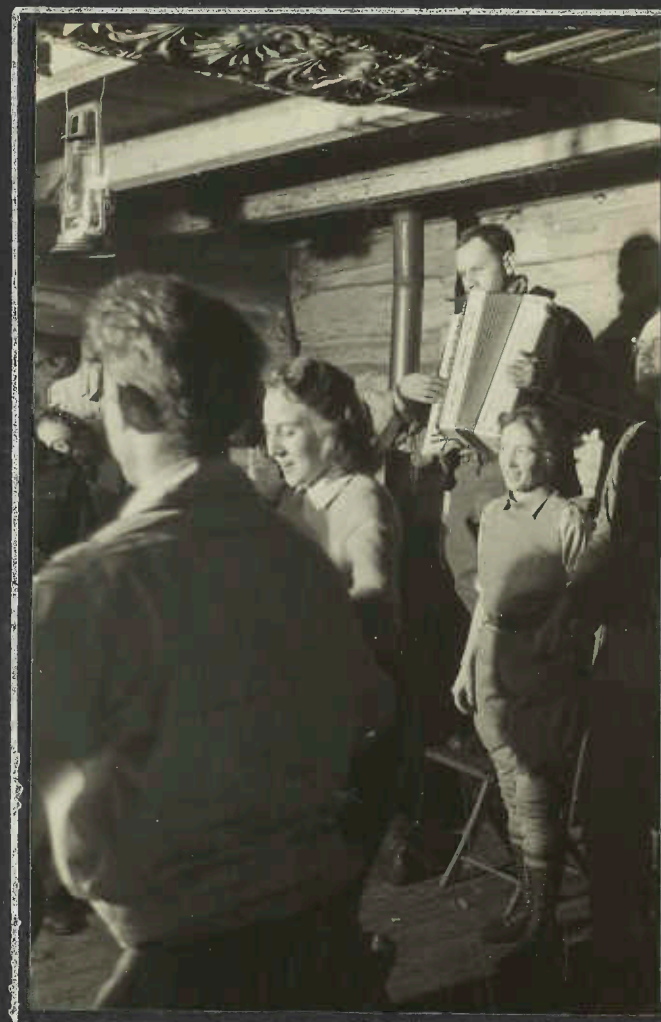


PINE GROVE FURNACE
SHELTER

NEW YEAR'S TRIP - 1940

THE SUNDAY NIGHT
SONG AND DANCE.

ORCHESTRA PHIL MOUNTS
A CHAIR TO GIVE THE
DANCERS MORE ROOM.
FRED IS CALLING
WHILE DANCING WITH
GRACE. ESTELLE
WETZLER AND MILLARD
KEMPER BEFORE THEM



WMR

IF THEY'D PUT SOME WOOD ON THE FIRE THEY COULDN'T GET
THAT CLOSE TO GET WARM. ON THE FLOOR - FRANK CALAFIORE,
MILDRED MOORE, MIRIAM RITTENHOUSE, MARY HEARD, WINNIE
RODEMEYER. RATING CHAIRS - FLORENCE BURNER, OLIVER
ISAAC (EARLY IN THE NIGHT, TOO) DOROTHY MOORE, RITA BAKER.

L. Bryns



F13

THE "OTHER SIDE" OFF THE SAME FLASH. THE DON REESES
IN CENTER. PEGGY MAGEE IN CORNER. WE
FAIL TO IDENTIFY THE OTHER GIRL. DOWN
IN LOWER LEFT, OLD MAC DONALD, NOT THE
FARMER. REMEMBER HIM - AND HIS
CAR - AND HIS BREAKFAST CEREAL?



♩ ♪ ♫ "IT'S THE SAME THE WHOLE WORLD OVER"
THE "THEME SONG" - ABLY RENDERED BY RITA BAKER, PHIL GLADFELTER,
AND PEGGY MAGEE.

L. Bryns

TOBOGGANS - HOORAY!
 CALEDONIA PARK
 NEW YEAR'S TRIP - 1940



WRR

ALL SET FOR THE RACE - FLORENCE IS NOT GOING TO RIDE DOWN THAT WAY - SHE'S THE MOTIVE POWER FOR THE START. ABOARD NO. 1 - FRANK CALAFIORE, ELOISE COCHEL, VIRGINIA ROBINSON, WINNIE ROEMMEYER. NO. 2 - FELIX GRIFFIN, RITA BAKER, MILDRED MOORE, GEORGE CONNER. SAY - WHO WON?



WRR

HAMILTON LEITCH IS OBVIOUSLY HAVING DIFFICULTY FITTING HIS LEGS IN THERE - - - AND LARRY BRUNS, FARTHER BACK, IS ALSO DOING SOME DEFT MANEUVERING.



WRR

SEVEN ON BOARD AND PLOWING TO A STOP WITH SNOW FLYING. FLORENCE LOOKS WORRIED - AND THAT FELLOW ASTERN LOOKS LIKE AN OGPU AGENT RIDING STEERAGE - STOWAWAY -



WRR

FRANK - UP FRONT - GETS THE SNOW. WINNIE, ESPECIALLY, AND VIRGINIA HAD A GRAND RIDE. FELIX IS TRYING TO LEAVE IN A DIGNIFIED MANNER.



WRR

THE TOBOGGAN HAS TO BE CARRIED (OR DRAGGED) UP THE HILL.



WRR

THIS STOP WAS APPARENTLY MADE WITH DIGNITY AND ACCORDING TO HOYLE - - - BUT WASN'T THERE ANOTHER PASSENGER SOMEWHERE?

NEW YEAR'S TRIP-1940

SKATING AT FULLER LAKE -
IN THE SNOW AT CALEDONIA PARK -



WRR

WINNIE IS DOWN; THOSE STANDING - MARY HEARD, RITA BAKER, FLORENCE BURNER, FELIX GRIFFIN, HAMILTON LEITCH, MILDRED MOORE, AND LAWRENCE BRUNS.



WRR

'ROUND AND 'ROUND THEY GO: JEAN CONNER AND HAMILTON LEITCH, MILDRED MOORE AND DICK ROESSLER (STEADY, THERE!) RITA IS COMING ALONG FAST - -



WRR

WELL - HE WASN'T PHOTOGRAPHING THE MOUNTAINS!



WRR

EARLY 1940 VERSION OF VIRGINIA



WRR

ALL OF THEM - PLUS PHOTOGRAPHER JEAN - RODE UP TO CALEDONIA FOR A TOBOGGAN SESSION IN LARRY'S '34 CHEVIE.



WRR

THERE'S SOMETHING ABOUT THIS WE DON'T GET-- YOU CAN'T COME DOWN THE HILL AT TERRIFIC SPEED THAT WAY-- IT'S WINNIE UP THERE--



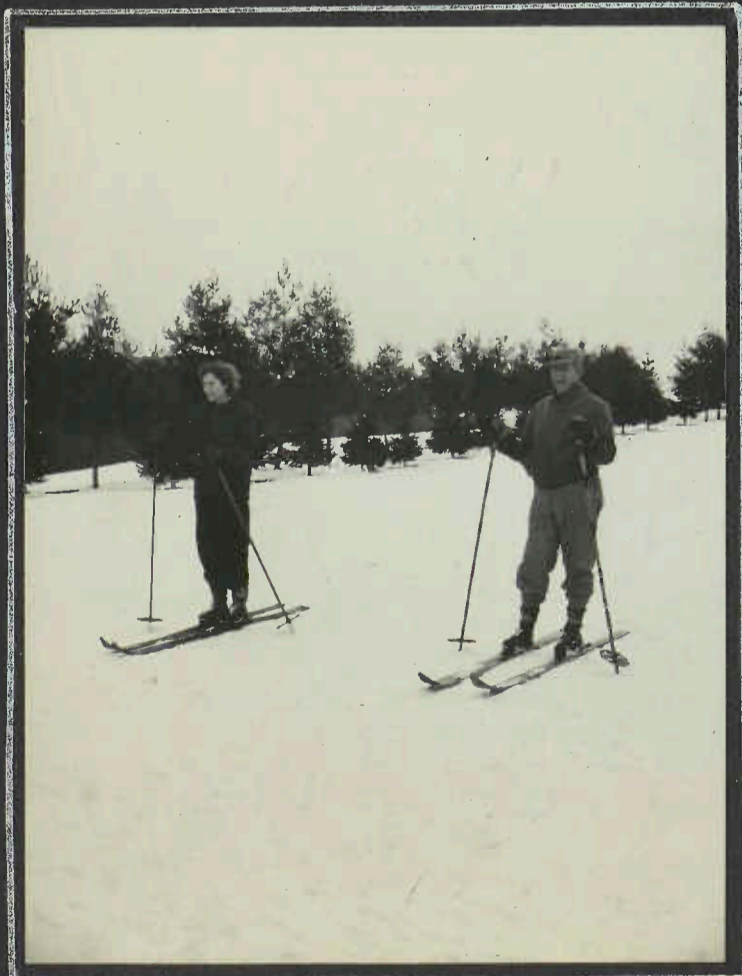
WRR

RITA AND WINNIE ROLL AWAY THE YEAR-OR YEARS- AND TRY OUT A MORE JUVENILE SNOW-SPORT.



WRR

DO YOU REMEMBER THE MANNERHEIM LINE? WELL- THIS IS NOT BARON MANNERHEIM AND HE'S NOT ON THE LINE, AND, ANYWAY, IDENTIFY HIM YOURSELF.



WRR

DOROTHY MOORE AND OS HEARD POISED FOR THE TAKE-OFF



WRR

PAUL JORDAN GETS SET TO SHOW A TRICK OR TWO.



WRR

WE WONDERED WHAT RUTH AND DOROTHY DID TO OS TO MAKE HIM TAKE SUCH LONG STRIDES IN THAT DIRECTION -- BUT THEN WE FOUND THAT HE WAS HURRYING TO GET OVER ON THE NEXT PAGE TO SEE - - - - ->

THE SKIERS

CALEDONIA PARK

NEW YEARS TRIP. 1940



JC

-- MILDRED WHY MEN
TAKE UP SKIING --



WAR

RUTH LENDERKING, LAWRENCE BRUNS, DOROTHY MOORE,
OS HEARD, MIRIAM RITTENHOUSE



WRR

DOROTHY



F13

JOE HAMBURGER DEMONSTRATES -



WMR

MIRIAM



WMR

THIS LINE UP WAS POSED FOR THE KODACHROME MOVIE.
CAN YOU IDENTIFY THEM? -
ELOISE, RITA, MILDRED, GEORGE, DOROTHY,
JEAN, OS, LARRY, RUTH, GERTRUDE,
MIRIAM, FRANK, FELIX, VIRGINIA -

CARRICK KNOB

JANUARY 21, 1940



GIVE HIM THE TOP OF A MOUNTAIN - AND HALF A CHANCE - AND WHAT A POSE!



IT WAS COLD UP ON THE CREST: ALICE BROWN, MARY HYLAN, WINSLOW HARTFORD, DON REESE, DAVE PRUDDEN, DOROTHY COCHEL, ELOISE COCHEL, AND VIRGINIA ROBINSON



YES, IT'S VIRGINIA UP THERE BUT SHE WOULDN'T CLIMB THE TREE.



DON TAKES THE TRIP CARD STATEMENT SERIOUSLY SO WE HAVE HOT COFFEE FOR LUNCH WHEN HE IS LEADER.



PICKING A NICE PLACE ON THE BANK OF A STREAM, DON GOES TO WORK AS HIKERS INVESTIGATE CONTENTS OF PACKS



ALICE HAS SOME BACON AT THE END OF THAT STICK; VIRGINIA SEEMS TO BE PLACING A CAN OF ZOOP.

APPALACHIAN TRAIL HIKE

FROM THE SUSQUEHANNA - UP BLUE (OR NORTH)
MOUNTAIN - WESTWARD TO LAMB'S GAP -
AND INTO THE VALLEY TO HIGHWAY 11.
FEBRUARY 11, 1940



O.O.H.

FRANK KNOWS THE SIGNS IN THIS COUNTRY AND EXPLAINS WHILE SKEPTICAL DAVE SCANS THE MAP. THE OTHER SKEPTIC, WITH THE WHITE HEADGEAR, IS EARL ROBERTS



W.R.R.

THE SUSQUEHANNA AND ~~THE~~ FORT HUNTER, SEEN THRU THE TREES FROM OVERVIEW



O.O.H.

OUT IN THE VALLEY DOROTHY REFRESHENS WHITE BLAZES.



O.O.H.

THE MEASURING WHEEL - WHICH BROKE DOWN - MAKING HIKE PLEASANTER.



J.C.

FELIX GRIFFIN, MARY HYLAN, ALICE KAESTNER, MORGAN BARR, LEWIS LATANE, AND THE TRIP LEADER, DICK ROESSLER.



O.O.H.

DOROTHY WANTS HER COFFEE JUST SO - - -

OVERVIEW- LAMBS GAP- HIGHWAY 11. ON THE APPALACHIAN TRAIL

FEBRUARY 11, 1940



IT'S LUNCHTIME IN LAMBS GAP- AND AS YOU SEE BY THEIR STANDING AROUND THE COFFEE HASN'T THROWN THE MEN FOR A LOSS.

WRR



THE COFFEE AND THE BALMY SUNSHINE - WELL, ANYWAY, LOOK AT OS AND JEAN.

WRR



IS DAVE GOING TO FURNISH TENOR ACCOMPANIMENT TO THE DOWNING OF THE COFFEE?

O.O.H



MORE OF THE LUNCH PERIOD WITH OS- MUST BE WEARING WINTER UNDIES - IN THE CENTER OF THINGS.

JC



MARY LIKES HER COFFEE

COM



THAT THIRD PAIR OF LEGS BELONGS TO LEWIS LATANE! DOROTHY CARRIES THE PAINT. →

JC

WASHINGTON'S BIRTHDAY TRIP - 1940
ON THE HORSESHOE TRAIL - FROM VALLEY FORGE



FB.

LOOKS LIKE IT MIGHT HAVE BEEN LUNCH PLACE.



J.C.



J.C.

FIVE ACROSS - FLORENCE BURNER, MIRIAM RITTENHOUSE, DONAL MURNACHAN, EDITH BOND, AND

COVE MOUNTAIN - OR MAYBE
TUSCARORA -

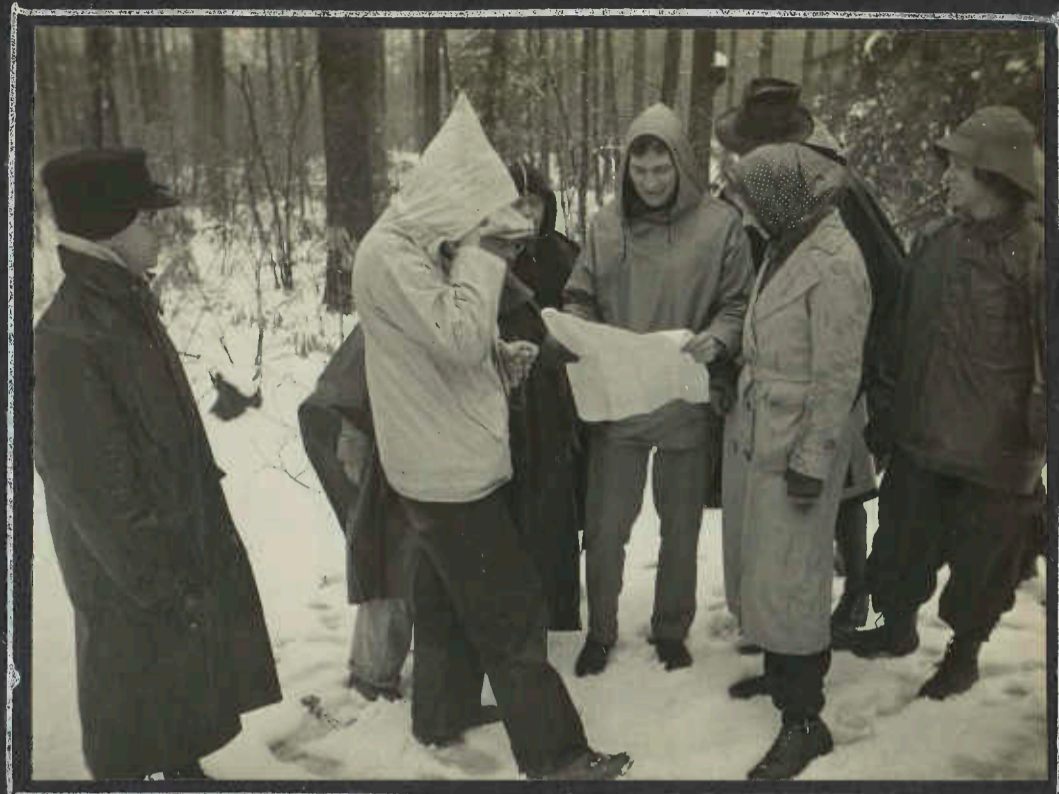
MARCH 3, 1940



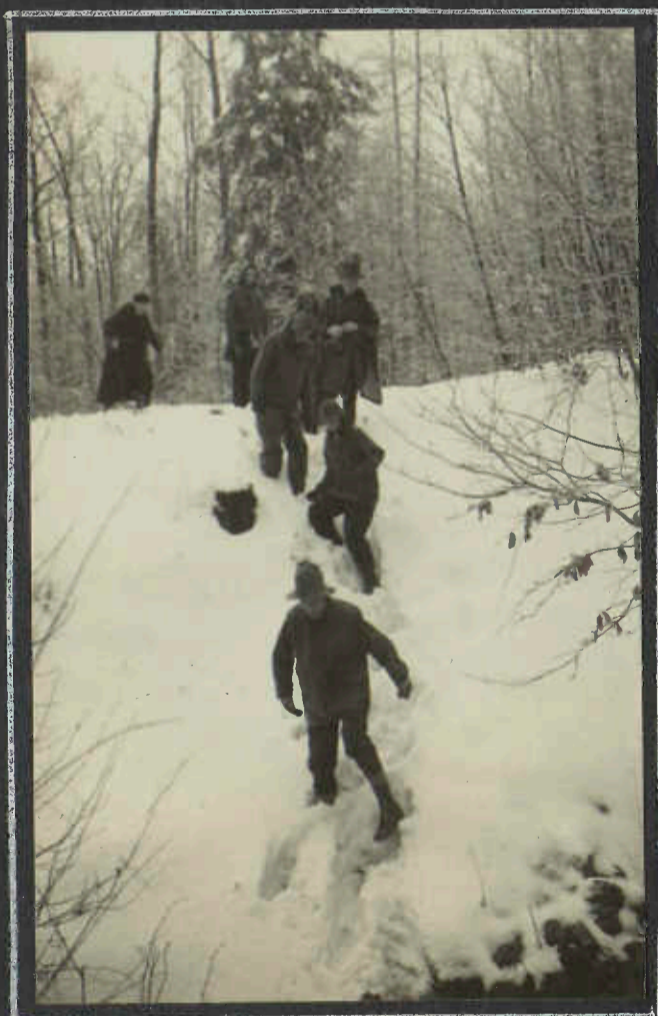
LEAVING HIGHWAY 30 TO HEAD UP THE MOUNTAIN.
SLEET STOPPED FOR A WHILE.



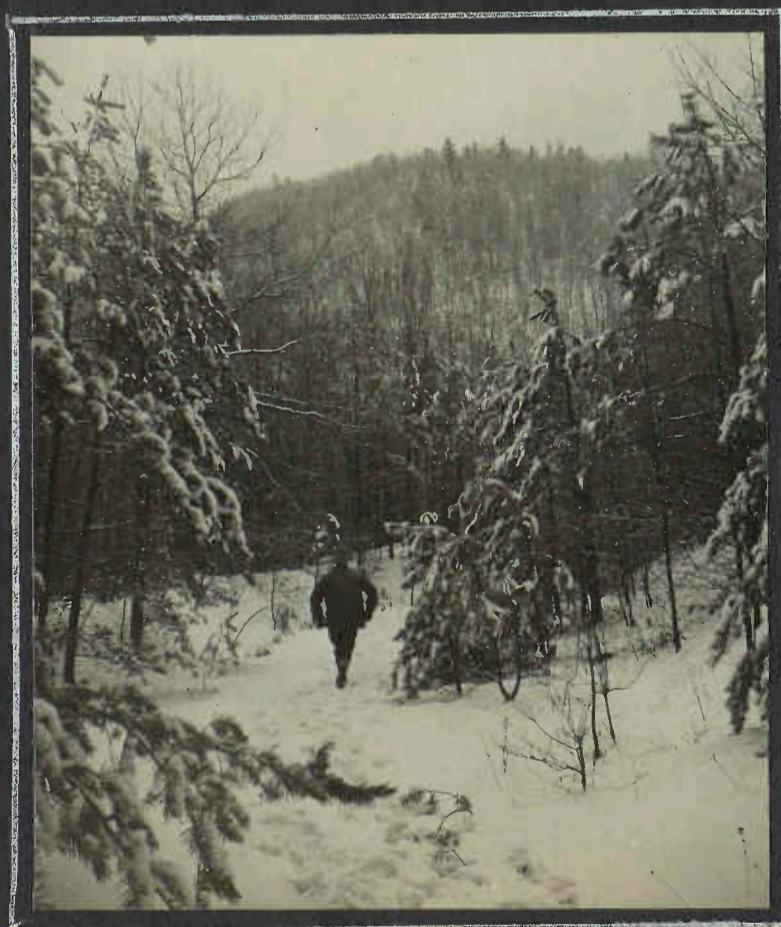
LOOKING DOWN THE CUT OVER THE
PIPELINE ON THE HOMEWARD WAY.



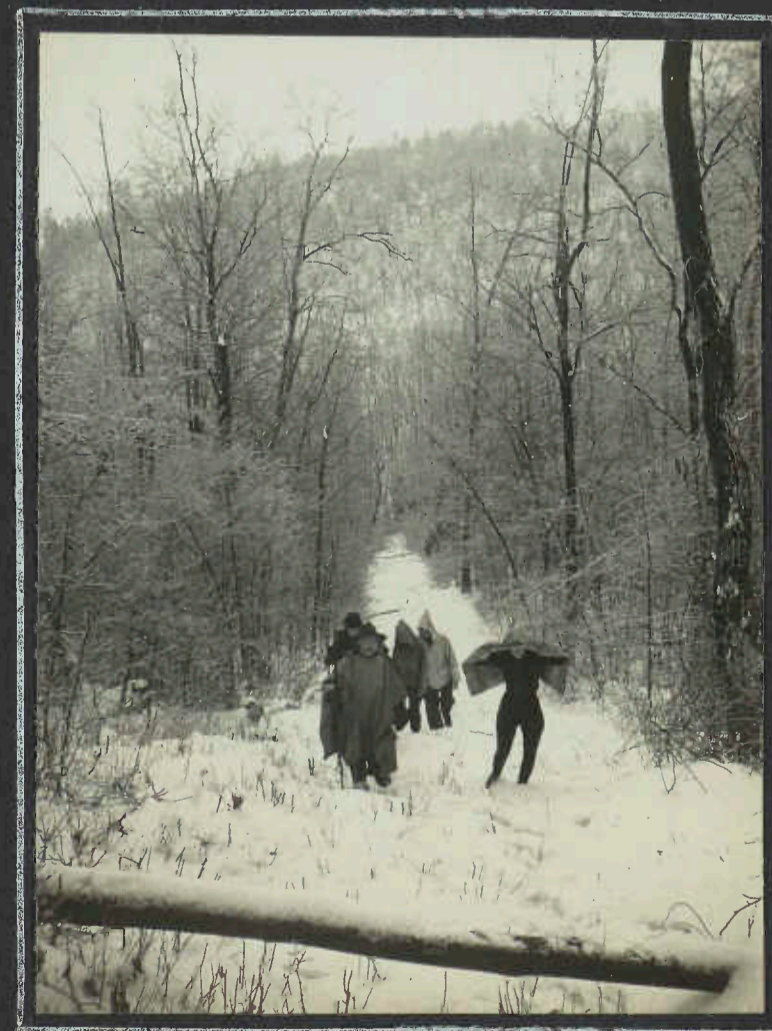
LEWIS LATANE, THE DROSCHKY DRIVER AT THE
LEFT, IS WAITING FOR HIS FARES TO MAKE
UP THEIR MIND. ITS GEORGE KAIN WITH COMPASS,
DR VAN KAMPEN NEXT, THEN FLORENCE BURNER,
MORGAN BARR WITH MAP, DAVE PRUDDEN WITH
BROWN HAT, ALICE BROWN, AND, IN THE
CHIC COSTUME, JEAN CONNER.



DOWN THIS WAY - IN DEEP SNOW



RECOGNIZE THIS JAUNTY FIGURE
STRIDING ALONG?



OH - THAT'S DOROTHY COCHEL.
NO - NO - YOU NEVER SAW HITLER
WITH A HAT LIKE THAT.

APPALACHIAN TRAIL HIKE - ACROSS THE CUMBERLAND VALLEY
MARCH 17, 1940



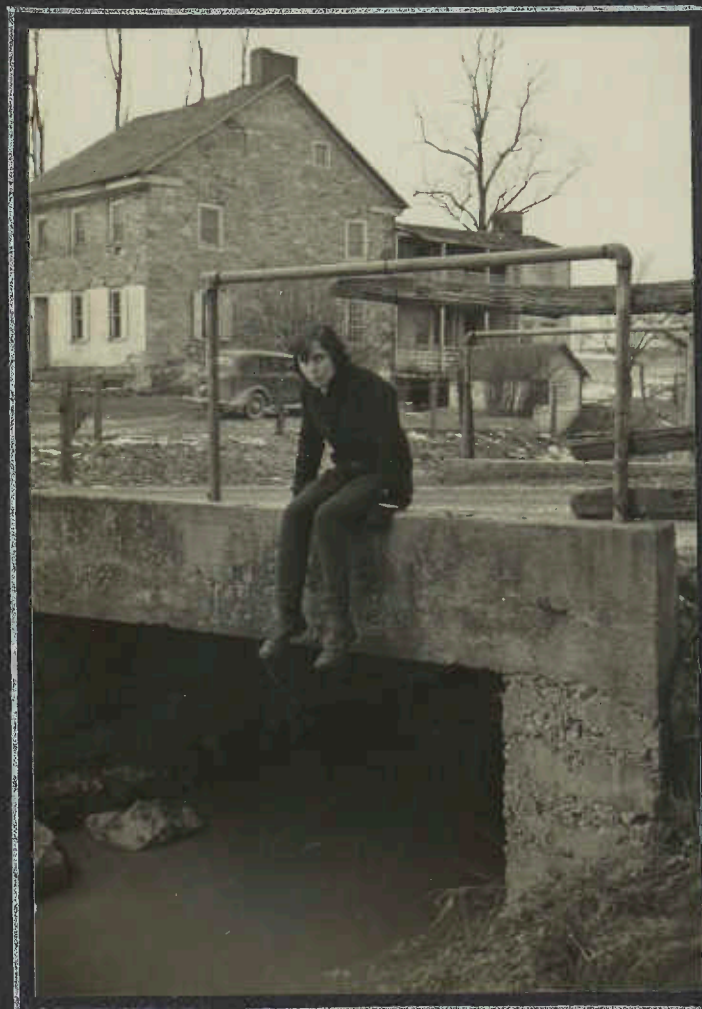
ON THE TRAIL,
APPROACHING
SOUTH MOUNTAIN
FROM THE NORTH



ACROSS THE FIELDS, SOUTH MOUNTAIN STRETCHES AWAY SOUTHWESTWARD



ANOTHER VIEW - BUT PIECING IT DIDN'T WORK -
MOST OF THE MORNING WAS COLD AND GRAY -



VIRGINIA - DID NOT FALL IN
(ON THIS TRIP)



ON WHITE ROCKS RIDGE, LOOKING
DOWN AND BACK OVER THE ROUTE
OF THE DAYS HIKE. VIRGINIA
ROBINSON, DICK ROESSLER, EARL
ROBERTS AND ELIZABETH FISHER

RANGE VIEW SHELTER TRIP. MARCH 30-31, 1940

REMEMBER THE NIGHT THAT IT RAINED AND SIXTEEN
PEOPLE AND THE DOG SLEPT IN THE SHELTER?



RANGE VIEW SHELTER - SHENANDOAH PARK -
SOUTH OF RATTLESNAKE POINT.



UP THE APPALACHIAN TRAIL NORTH
OF THE SHELTER.



THE VIEW FROM THE FRONT PORCH -
THAT'S HAWKSBILL IN CENTER.



GOING DOWN THE PINEY RIDGE TRAIL



HOGBACK MOUNTAIN - AS SEEN FROM THE P.L.D. ROAD
NEAR THE JINNY GRAY FIRE ROAD. PINEY RIDGE
AT THE LEFT.



HOGBACK MOUNTAIN, LITTLE HOGBACK MOUNTAIN, AND SOUTH
MARSHALL - FROM THE P.L.D. ROAD.



UP THE STEEP AND ROCKY RAVINE
THAT IS
"LITTLE DEVILS STAIRS"