

Picture Record of the Trips of the Mountain Club of Maryland

Volume One

October 1934 to the end of 1936

The Mountain Club Album was mentioned as a desirable project early in the life of the club; in 1938 John Buck assembled the first regular Club Album, pictures from trips in 1936-37-38 making up the collection.

In the summer of 1939 the album became a very definite "Photographic Group" project, with "recognition" in the budget. This form of album was adopted and the task of getting negatives and of making prints and enlargements got under way. John Buck's work was absorbed in the new books - in the first three volumes. Not ALL the trips are in this photographic record - we have made all effort to get pictures. Any more available will be appreciated and used. Those in this volume are by Florence Burnet, Orville Crooked, Frank Calafiore, Osborne O'Heard, and Fred Ward. Printing and enlarging by Frank Calafiore, Osborne O'Heard, and Winnie Rodemeyer; assistants including Jean Conner, Miriam Rittenhouse, Alvin Isaac, Dorothy Cochel, Raymond Heiss, and others from outside the club. Edited and mounted by the group leader who didn't like to get his fingers in the developer.

W. R. Roessler

12/2/40

Photographic Group Leader - 1939-40

CRAMPTON GAP
TO WEVERTON

OCTOBER 21, 1934



OWC

ON WEVERTON CLIFFS -
OVERLOOKING THE
POTOMAC RIVER



OWC

AT THE END OF THE DAY -



O.H.

STANDEES ARE CROWDER AND HEISS -
ARTHUR STILL HAS THE PRUNING SHEARS -



OWC

THAT'S WES TAYLOR AT THE RIGHT



OWC

SMITHBURG TO PEN-MAR
ANOTHER OF THE "PRE-ORGANIZATION" TRIPS

NOV. 13, 1934



O.H.

THE CAMERA
GETS THEM
AT
LUNCHTIME



O.H.



O.H.

CRAMPTON GAP TO WEVERTON OCTOBER 21, 1934

PRE-ORGANIZATION TRIP
"A CLUB HAS MERITS" - O.W.C.



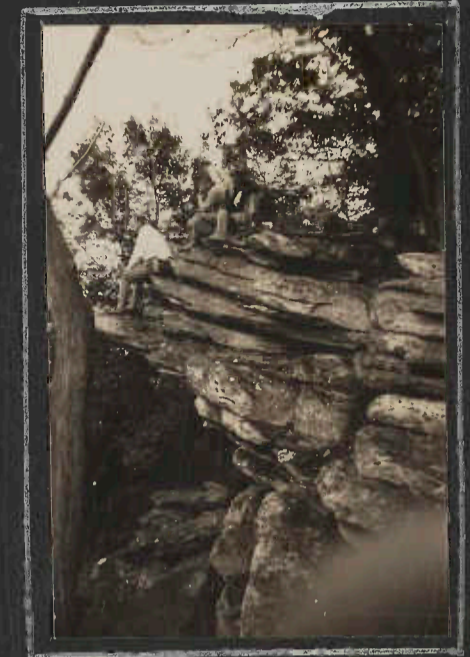
AT CRAMPTON GAP - GIVING THE GATH ESTATE
THE ONCE-OVER. NOTE PILE OF TOOLS -....

O.H.



ATOR ON THE TRAIL AT CRAMPTON GAP -
IS RITA BAKER LOOKING FOR RAIN?

O.H.



A FAIR SAMPLE OF
THE NEIGHBORHOOD ROCKS



SOON-TO-BE MEM
AT LUNCH - YES -
THEY ATE ON THE
FIRST TRIP -



MRS. SMITH, ALEC KENNEDY,
AND TWO PAIRS OF
UNIDENTIFIED LEGS



RAYMOND CREEKMORE, RITA
BAKER, AND ARTHUR WEISS
UP ON THE RIGHT.



MARY HEARD, OS HEARD,
AND RUTH LENDERKING.



LOOK AT THE GIGANTIC WRIST WATCH
ORVILLE CROWDER CARRIED THEN -



WHO
THEY?

ALL PICTURES EXCEPT TWO IN UPPER
LEFT BY ORVILLE CROWDER.

ALBERTON-OELLA
JANUARY 5TH



ED HOUK, THE LEADER IS IN CENTER.
JACK THOMPSON IS NO. 3 FROM LEFT.
CARL HAASE IS SORT OF LOOKING
OVER ALEC KENNEDY'S SHOULDER -
WHY HE -ALEC- IS LOOKING "AWAY"
FROM THE THREE NICE LITTLE
GIRLS WE DO NOT KNOW

CATOCTIN FURNACE -
FISHING CREEK
JANUARY 20TH



TERRIBLE WEATHER SHIFTED THE TRIP FROM
LOUON HEIGHTS TO THE CATOCTINS ON JAN.
20TH. ALEC KENNEDY, ORVILLE CROWDER,
"OS" HEARD, WES TAYLOR, BUDDY GUE, AND GRACE
WARD. FRED WARD WAS PHOTOGRAPHER.



ON A DAY WHEN ITS ONE-TIME WARMTH WOULD
BE HELPFUL THE FURNACE STANDS COLD
AND, EXCEPT FOR THE HIKERS, DESERTED



ACCORDING TO THE BULLETIN, THE DAY WAS SPENT
EXPLORING THE CATOCTINS FOR FUTURE
EXCURSIONS - IT SEEMS THAT ORVILLE IS
TAKING NOTES - PROBABLY OF THE FENCE
SO THAT IT CAN BE FOUND AGAIN WHEN
THE SNOW IS GONE



SIX PEOPLE OPERATING ON THE FIRE -
THEY MUST HAVE WANTED HOT SOUP -

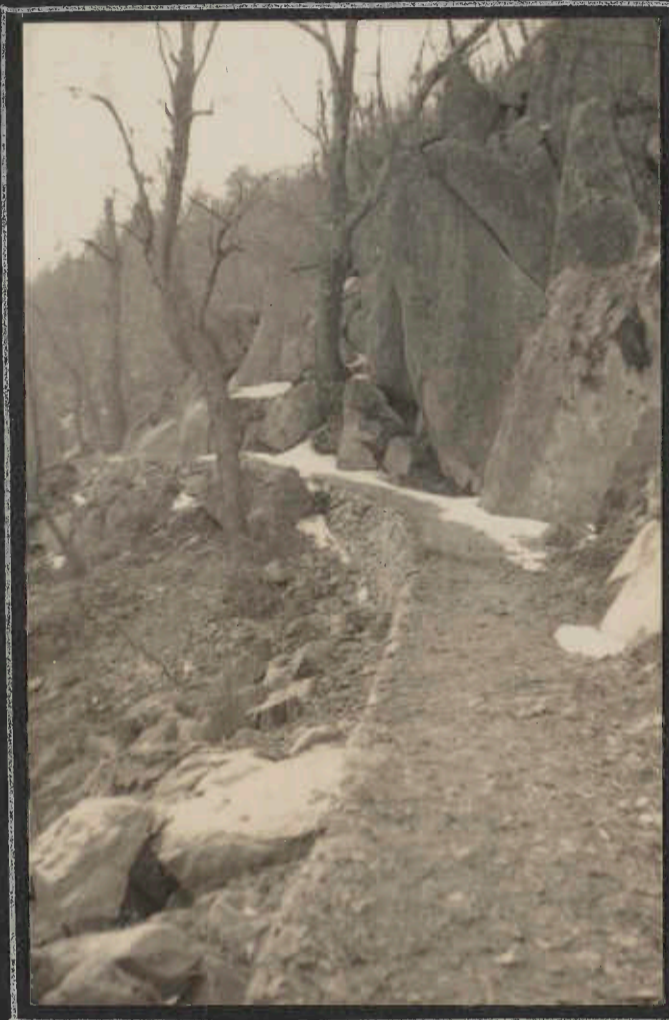
SHENANDOAH PARK

SOUTH FROM PANORAMA

FEBRUARY 23 ND



THE CLUB'S FIRST BUS TRIP ...
AT PANORAMA ...



TRAILS AND TRAILING ...



ON MARYS ROCK

MRS. BOYD, RUSSELL
PAGE, RUTH LENDERKING,
AND WILSON GAMBRILL



1935

SHENANDOAH PARK TRIP -
FEBRUARY 22 ND

MCM



AT THE END OF THE TRAIL - ON MARYS ROCK



MORE OF THE GROUP ON
MARYS ROCK - ALEC
KENNEDY AT THE LEFT,
THEN MRS. HEARD, EDITH
BOND, BUDDY GUE, REA
STEELE, RUSSELL PAGE,
AND MRS. BOYD

THE PINNACLES
ON
"THE PINNACLE"



LUNCH AT MEADOW SPRING

ORDINARILY WE WOULDN'T
INCLUDE THIS KIND OF
PICTURE -- BUT LOOK
WHAT HAPPENED TO
THE WEATHER





LOOKING DOWN THE POTOMAC

O.H.

HARPERS FERRY
LOUDON HEIGHTS
MARCH 3, 1935



O.H.



RAILROAD TRACKS -
AND IT'S EVER THUS -

F.W.



F.W.

JEFFERSON ROCK,
THE RUINS,
AND
MISCELLANEOUS
HIKERS



F.W.

GRACE AND RUTH
SEEM TO BE THE
COFFEE COMMITTEE

AND LOOK AT THE
COLOR OF THE
BUCKET BACK
IN THOSE DAYS



F.W.

HARPERS FERRY - LOUDON HEIGHTS MARCH 30



O.H.

THE "TRUCK"
CONTINGENT
ASSEMBLES -
AND MARCHES
INTO HARPERS FERRY



O.H.



O.H.

DUE TO "INDISPOSITION" OR SOMETHING OF THE
HALLTOWN FERRYMAN THE HIKERS FOUND THE
SCOWS WATERLOGGED AND ONLY THE LITTLE
BOY WITH THE SUSPENDERS AVAILABLE FOR
DUTY. NOTE USE OF THE COMBINATION
"GAILER" AND PADDLE



F.W.

IS THIS A PRACTICAL
EXAMPLE OF
"WOMEN AND
CHILDREN" FIRST?
HEARD AND KENNEDY
ARE DETERMINEDLY
FURNISHING THE
MOTIVE POWER.



F.W.

AT LEAST ONE PASSENGER
IS REGISTERING SOME
SKEPTICISM BECAUSE
OF THE LOW FREEBOARD
ASTERN - OR MAYBE
AT THE BOW. THE
OTHER CRAFT, AT
EXTREME LEFT SEEMS
TO BE HAVING ITS
DIFFICULTIES TOO.

WOODSTOCK TO ALBERTON
MARCH 23D



FW.

ON THE BRIDGE AT WOODSTOCK
BEGINNING THE HIKE



OH.

THE DORSEY RUN BRIDGE —
NOTE TUNNEL AT FAR END



F.B.

THE POWER LINE INSPECTOR'S
BRIDGE SERVES MCM HIKERS TOO



O.H.

DO YOU
RECOGNIZE
THEM?



O.H.

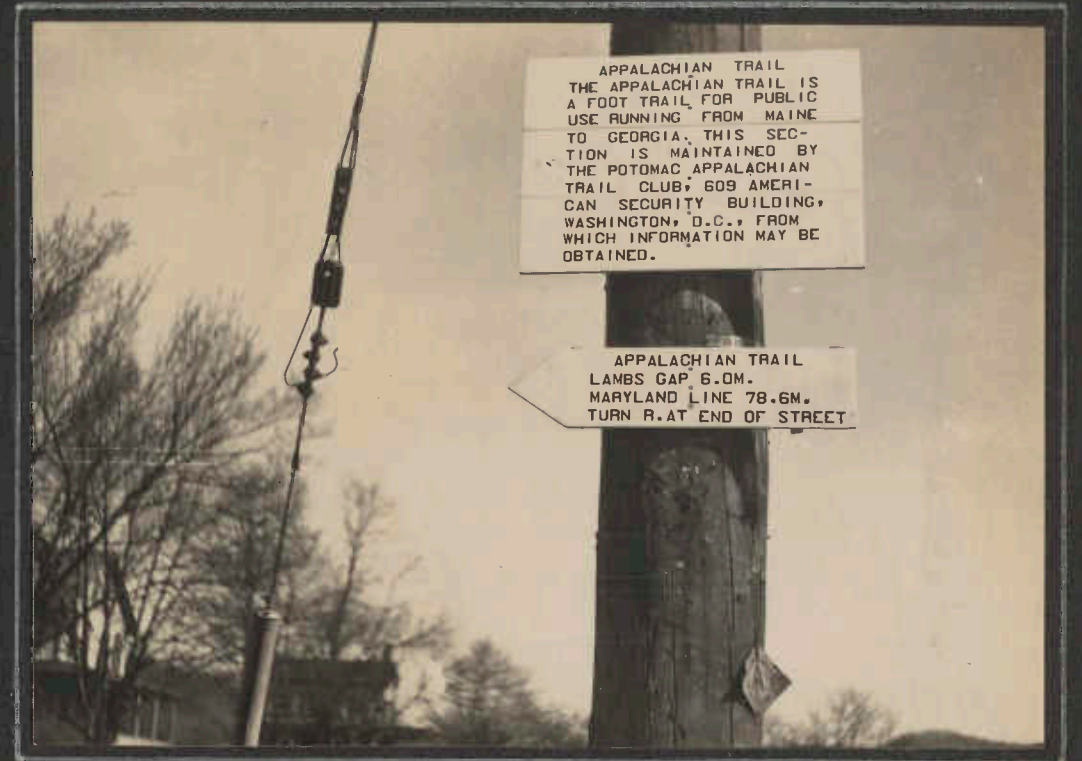
PROMINENT IN HERE - RUTH LENDERKING AND HARRIET CASPARI

WORK

ON NORTH MOUNTAIN
PENNSYLVANIA
MARCH 24, 1935

TO QUOTE FROM THE BULLETIN:
ON MARCH 24 A LARGE GROUP ON AN
INDEPENDENT WORK TRIP CLEARED AND
REPAINTED THE MARYLAND SECTION
OF THE TRAIL ON NORTH MOUNTAIN.

THE GROUP



APPALACHIAN TRAIL
THE APPALACHIAN TRAIL IS
A FOOT TRAIL FOR PUBLIC
USE RUNNING FROM MAINE
TO GEORGIA. THIS SEC-
TION IS MAINTAINED BY
THE POTOMAC APPALACHIAN
TRAIL CLUB, 609 AMERI-
CAN SECURITY BUILDING,
WASHINGTON, D.C., FROM
WHICH INFORMATION MAY BE
OBTAINED.

APPALACHIAN TRAIL
LAMBS GAP 6.0M.
MARYLAND LINE 78.6M.
TURN R. AT END OF STREET

THE SIGN AT OVERVIEW - WHERE THE TRAIL LEADS
WESTWARD FROM THE SUSQUEHANNA



EVEN A MEASURING WHEEL - AND NOTE
THE STALWART GENT HEADING AWAY
FROM YOU IN THE CENTER OF THE
PICTURE. IT'S CARL HAASE, AND
HE IS ALL AMBITION AND ENERGY - - -



BUT, IN TIME, HE MUST PARK FOR
A BIT OF REST - JUST A BIT,
YOU KNOW - BUT NEXT - - -



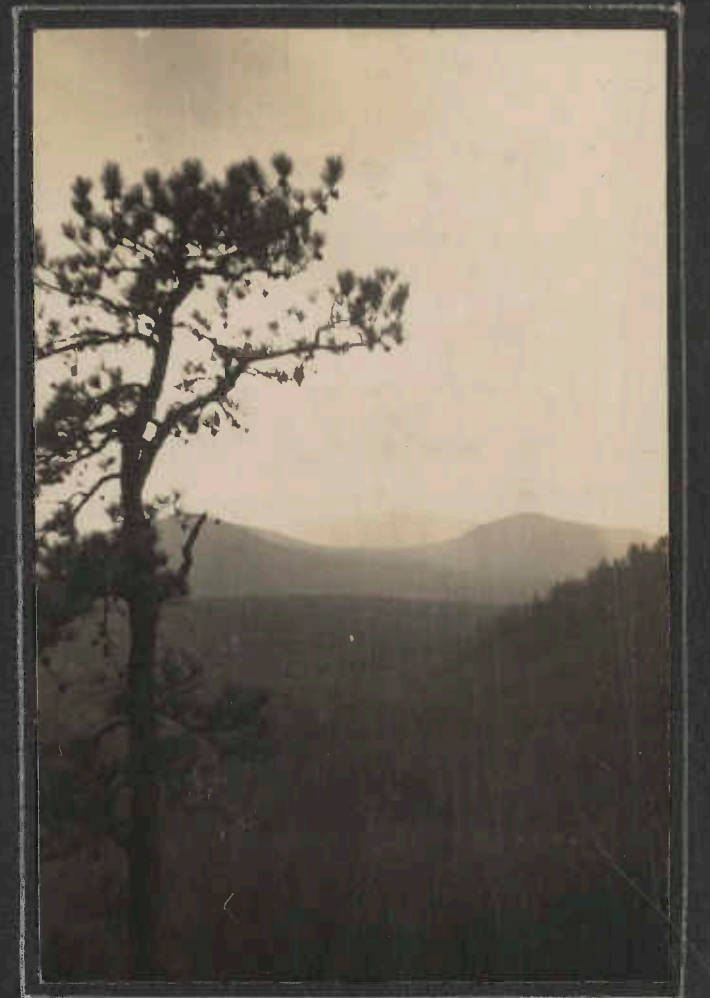
IN QUIET SLUMBER AS THE TOOLS
STAGE ASSEMBLY ABOUT HIM

WORK ON THE 

MARCH 17, 1935



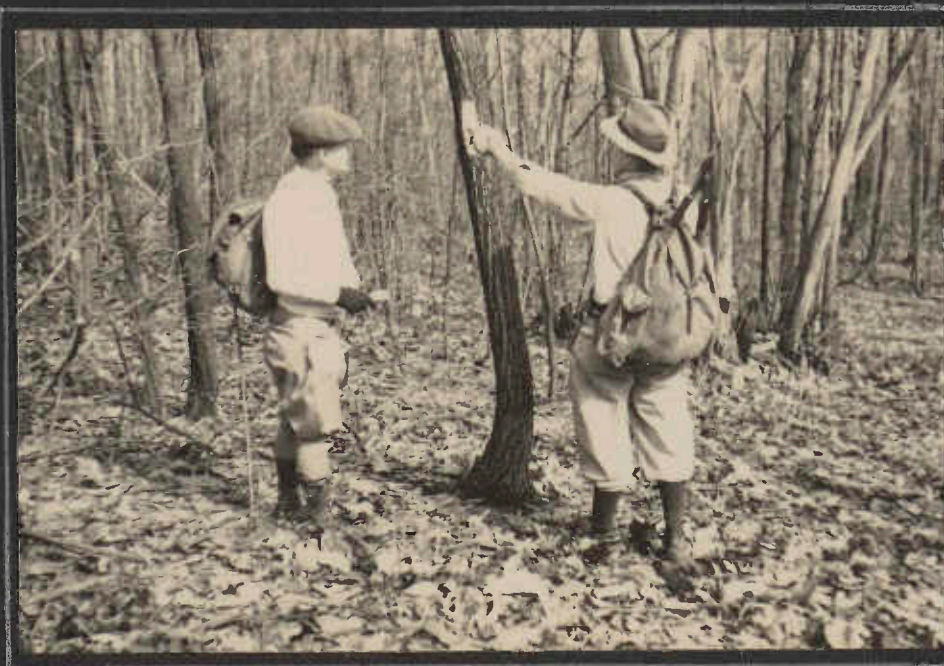
THE OLD "CENTER POINT" OF THE TRAIL - ON THE LONG MOUNTAIN FIRE TOWER



QUOTING FROM THE BULLETIN: THE RELOCATION OF CENTER POINT KNOB, CONCEIVED AND SCOUTED BY MEMBERS OF THE BALTIMORE CLUB, HAS PROVIDED THE PENNSYLVANIA TRAIL WITH ONE OF ITS FINEST MOUNTAIN VISTAS. IT HAS BEEN LOUDLY ACCLAIMED



SNIP, SNIP, SNIP, ETC.



THE FAMILIAR WHITE BLAZE



NO, THAT'S NOT ALL HIS PACK - IT'S ANOTHER WORKER TO THE SOUTH - - -

SUSQUEHANNA REGION

SATURDAY AND SUNDAY, APRIL 6+7, 1935



FW.

THE TRIP WAS SCOUTED SOME TIME BEFORE, WHEN THERE WAS STILL SNOW AND ICE AS THE PICTURES ABOVE AND BELOW SHOW



FW

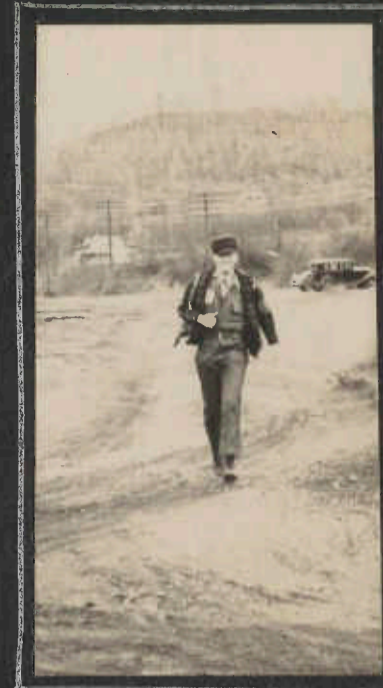


FB



O.H.

THE BALTIMORE GROUP NUMBERED FIFTEEN - TWO ARE MISSING FOR THE MOMENT



O.H.

FRED'S LONG STRIDE



O.H.



FB

MCM ... LUNCH

SUSQUEHANNA REGION
APRIL 6-7, 1935



FB



OH

THE END-OF-THE
HIKE QUARTETTE -
GATES, ANDERSON,
WINN - AND THE
83 YEAR "OLD
MAN" ALDRIDGE
YES, HE WALKED
IT TOO - THIS WAS
AFTER 10 MILES.



OH

LUNCH CAN BE A LONG-DRAWN OUT PROCEDURE
ON A LONG NARROW ROAD --



OH

JOE WINN TRIES
TO GET THEM TO
RAISE THEIR
VOICES IN SONG.



OH



OH

ROCKVILLE GAP



FB

APRIL 14TH
AND STILL
WORKING



FG

WELL - WE KNOW THESE PEOPLE -



OH

CUTTING THE NEW ROUTE UP
AND OVER LONG MOUNTAIN



FW

FRED SERVES COMPLACENTLY AS
A LADDER WHILE GRACE PUTS UP
THE NEW SIGN AT ROUTE 34.
IS THAT BUDDY GUE ENGINEERING FOR GRACE
AND GIVING FRED MORAL SUPPORT?



FS



OH



OH

SEEMS TO BE QUITE A CONCENTRATION
OF PRUNERS --- BUT THIS WAS BEFORE
THE BLITZKRIEG DAYS ---

CALEDONIA
THE
WILD FLOWER
TRIP
MAY 5TH

DAMP WEATHER
AND DENSE FOG
MARKED THIS TRIP

AND APPARENTLY
ALSO A SMOKY
FIRE ?



FW

IN THE CATOCTINS
THE MEMORIAL DAY TRIP



AT FISHING CREEK

FB



FB



FW



LOOK AGAIN - IT'S A LARGE LEAF

OH



OH



WHERE DO WE GO FROM HERE?



LUNCH

OH



OBVIOUSLY MORE LUNCH

FW OH

↑ IT SEEMS THAT
FRED ACTUALLY
FOUND ONE OF
THE DIRECTION
SIGNS -

THE PICTURE OF HOUK
AND FRED WARD, OVER AT
LEFT, WAS ADDED AFTER
PAGE WAS MADE UP,
THEREFORE THE CROWDING.

THERE WERE FORTY PEOPLE
ON THE HIKE; FOLIAGE
WAS TOO DENSE FOR
PHOTOGRAPHERS TO GET
ALL OF THEM.

MEADOW SPRING SHELTER
 WHITE OAK CANYON
 "OLD RAG"
 JUNE 14-15-16-1935



YES - LUGGAGE MUST BE CARRIED IN



WES TAYLOR IS TURNING THE FEED
 OVER TO THE EVIDENT SATISFACTION
 OF FLORENCE AND RUTH -



IN THE BLUE RIDGE
 MOUNTAINS OF
 VIRGINIA - - -



"OLD RAG"



THE TABLE AT MEADOW
 SPRING HAS SOME OF THE
 FEATURES OF A MANTEL-PIECE -

AND THE PHOTOGRAPHER
 SEEMS TO HAVE MERGED
 WES'S DINNER WITH HIS
 SHIRT - - OR WAS THE
 PLATE CLEANED THAT WELL?



TURNER'S GAP TO WEVERTON
JUNE 30TH



IT WAS A BUS TRIP -- FB



RASPBERRIES AT FOX'S GAP - SOME
HIKE ON - OTHERS - STOP TO EAT. OH

BULL RUN MOUNTAINS
NOVEMBER 17TH



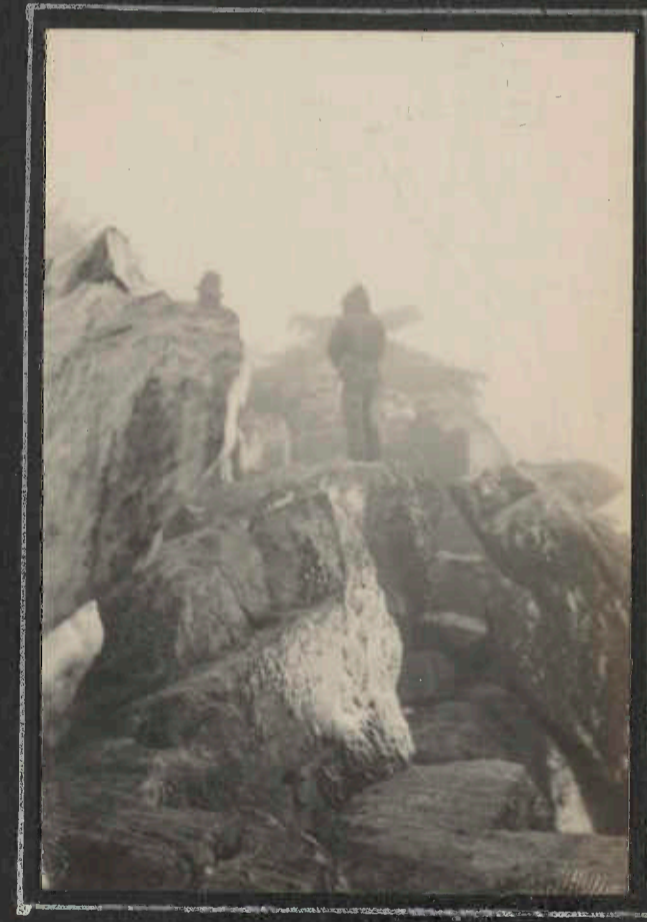
42 REGISTERED - 19 VENTURED FORTH
FROM BALTIMORE'S RAIN TO FIND
SNOW IN THE BULL RUN COUNTRY - OH



WELL, C'MON - LET'S GET GOING - ON

FROM THE BULLETIN: THE FACT THAT IT IS RAINING IN
BALTIMORE IS NO PROOF THAT
IT IS RAINING IN THE BLUE RIDGE. NO; IT IS
PROBABLY SNOWING. (IT WAS.)

DESPITE THE SNOW SQUALLS THERE WERE WILD
CLAIMS AS TO EXCELLENT VISIBILITY ---
CLAIMS WERE SCOUTED WHEN THE PEOPLE
ON THIS OUTPOST COULD SEE THE FAR-AWAY
PEAKS OF THE HIMALAYAS --->



FRANK CALAFIORE COMES
INTO THE PICTURE AT THE LEFT
IN THE FALL OF 1935



A TRIP ALONG THE NORTH BRANCH OF THE PATAPSCO
BROUGHT OUT MORE MEN THAN FEMININITY - THE
FIRST PICTURE WE HAVE OF THE HICKS FAMILY - -
BUT LOOK AT RUTH'S SKIRT! OCTOBER 26TH. FW



OH

ON THE
CENTER POINT MARKER
JOB
AUTUMM 1935



NOW IT'S TIME TO EAT --- AH-AHH - IT LOOKS GOOD ^{OH}



EDITH SEEMS TO BE EXASPERATED
AT CREEKY'S CARRYINGS-ON ^{OH}



AND NOW - TO HAUL THE
CEMENT AND WHATNOT -
ALL HEAVY WHATNOT -
UP THE MOUNTAIN - ^{FW}

BE OF GOOD CHEER,
GENTLEMEN, YOU
ARE ON THE RIGHT
TRAIL - AND THE
WORST IS YET
TO COME -



BUDDY HOLDS DOWN THE
ROCK THAT HOLDS THE
ROPE AND THE LOG TRACKS - ^{OH}

CENTER POINT KNOB MARKER PROJECT - AUTUMN 1935



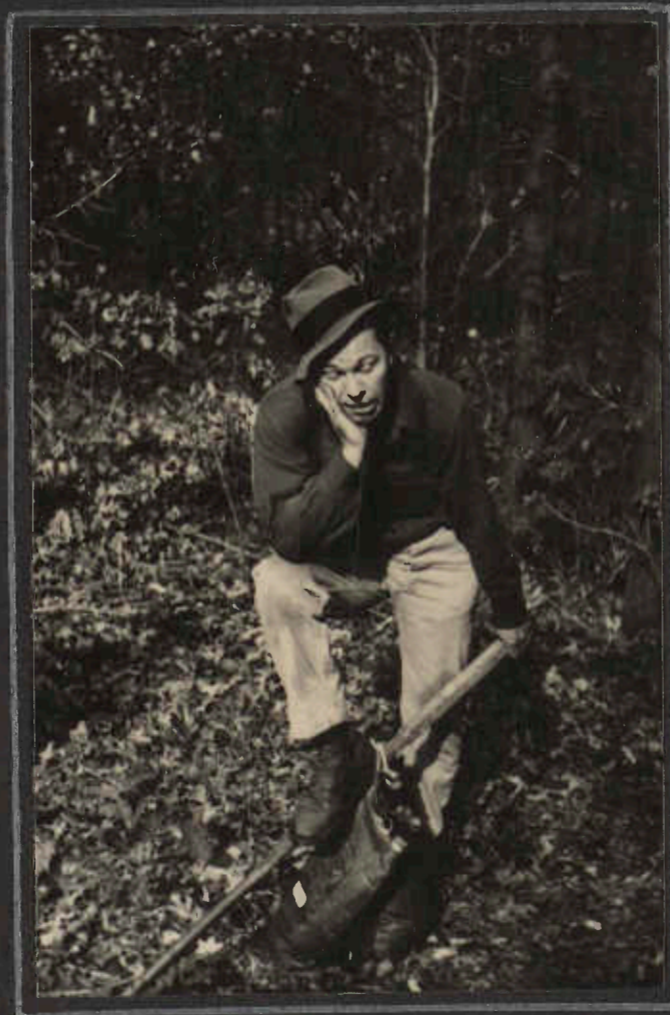
THIS LOOKS LIKE A NICE ROCK -
WHAT YOU SAY WE TAKE THIS ONE?



SO THEY DID -- AND DRAGGED IT
UP THE HILL MOUNTAIN ---



HOLD IT A MINUTE -
I WANT A DRINK



GENTLEMEN - THIS CROWBAR AND
THE WATERBAGS ARE NO
FEATHERS - I'M TIRED - AND
I MOVE WE GET A DERRICK -



SO THEY GOT A DERRICK --

THE CENTER POINT KNOB MONUMENT

1935



NOW, WE HAVE IT THIS FAR - LET'S GET SOME - - - - FW



ENGINEERS AND DECIDE JUST WHERE WE ARE GOING TO PUT IT - - - - OH



OK, ARTHUR, FOUR MORE INCHES TO THE LEFT AND WE'LL CALL IT A JOB - - - -

FW



FC

AND THEN CAME THE MEMORABLE DAY OF THE DEDICATION OF THIS MONUMENT WITH ITS CROWDS FROM FAR AND WIDE - AND WITH THE RAINS THAT PREVENTED BETTER PICTURES -

THE AFFAIR SEEMS TO HAVE GOTTEN INFORMAL - THERE'S KEN BOARDMAN BEHIND THE MARKER - HARRIET, WITH LIGHT RAIN CAPE TO THE RIGHT, ORVILLE A BIT FARTHER OVER, AND "CREEKY" ON THE RIGHT EDGE.



FC

BIG DEVIL STAIRS
SHENANDOAH PARK

JANUARY 19, 1936

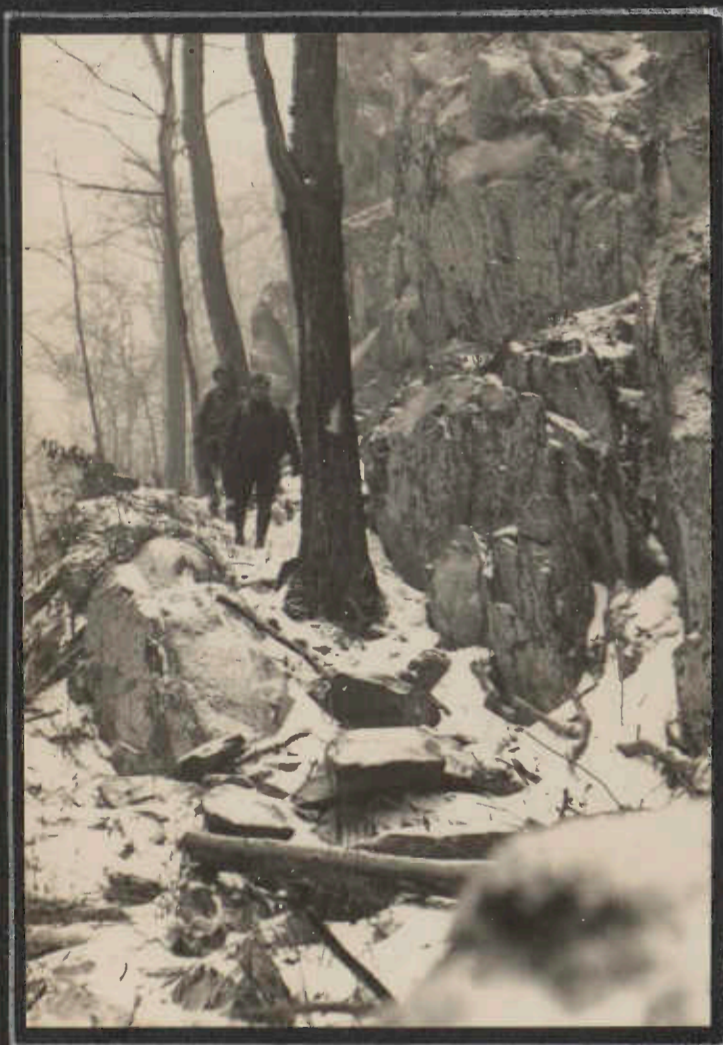
JOINT TRIP WITH THE P.A.T.C. -- SEVEN BALTIMOREANS SHOOK THEMSELVES AWAKE AT 4 A.M. PROCEEDED TO WASHINGTON, TO LEAVE THERE AT 7 A.M. RAIN CHANGED TO SLEET -- AND A WILD BLIZZARD -- BUS, WHICH WAS TO GO TO PANORAMA, GAVE UP AT LITTLE WASHINGTON, AND WHEN EASTBOUND TRAFFIC REPORTED DIFFICULTIES IN CROSSING THE MOUNTAINS, HIKE PLANS WERE CHANGED AND PARTIES SET OUT FOR "THE PEAK" AND "BIG DEVIL STAIRS" RATHER THAN RANGE VIEW SHELTER.



AT LITTLE WASHINGTON, DECIDING WHAT TO DO WHILE THE BLIZZARD RAGED



HIKING - IN HARRIS HOLLOW



BIG DEVIL STAIRS
ONLY A LAZY WIND DOWN IN HERE - BUT THE ROARING OF THE STORM ABOVE COULD BE HEARD.



LUNCH - IN THE RUINS OF A BARN
IT'S NOT A SIGNBOARD - IT'S THE DOOR LISTING AT A CRAZY ANGLE WITH LOCKING BAR STILL ATTACHED.



JUST BEFORE THE SUN BROKE THRU FOR A GLORIOUS SUNSET



RUTH

O.O.H.



ACROSS THE SNOWCLAD CREST -

O.O.H.



LUNCH - SAY, WHO THREW THAT HAT INTO THE FIREPLACE?

O.O.H.



ONE OF THOSE EXPERIMENTAL STOPS -

F.C.



COULD BE A MOUTH ORGAN - OR A PIE - OR A CRUST OF RYE BREAD - OR EVEN A FROZEN SANDWICH FOR LUNCH

O.O.H.



THE GATEWAY

O.O.H.

BRADDOCK HEIGHTS TO HIGH KNOB
 FEBRUARY 16, 1936
 THE CLUB'S FIRST SKI TRIP—



THIS SEEMS TO BE THE USUAL DISEMBARKING
 SCENE - WONDERING WHERE OTHER CAR IS--

F.C.



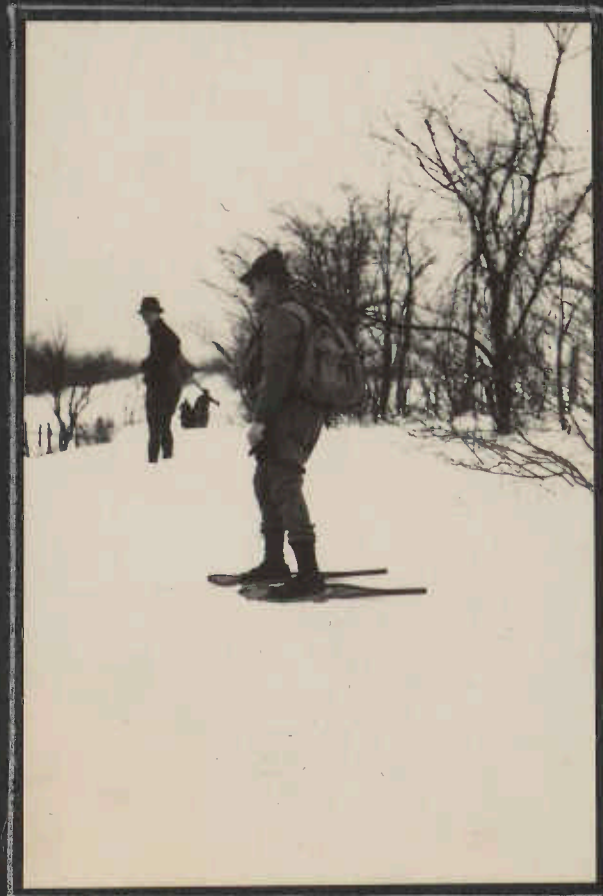
IT SEEMS AS IF HE'S
 STARTING CAUTIOUSLY --

O.O.H.



MIGHT AS WELL KEEP WARM - ONE OF
 THE "FIRST LANCERS" GETS PLAYFUL -

F.C.



HENRY LOOKS AROUND TO
 SEE IF MR. HEARD IS
 GOING TO MAKE IT --

F.C.



HE'S DOWN - AND WHILE HE'S THERE, HE
 MIGHT AS WELL GET A READING FOR
 A PICTURE --

F.C.



FLORENCE IS IN IT KNEE DEEP,
 BUT ALEC SEEMS TO HAVE
 MADE THE UPPER CRUST --

F.C.

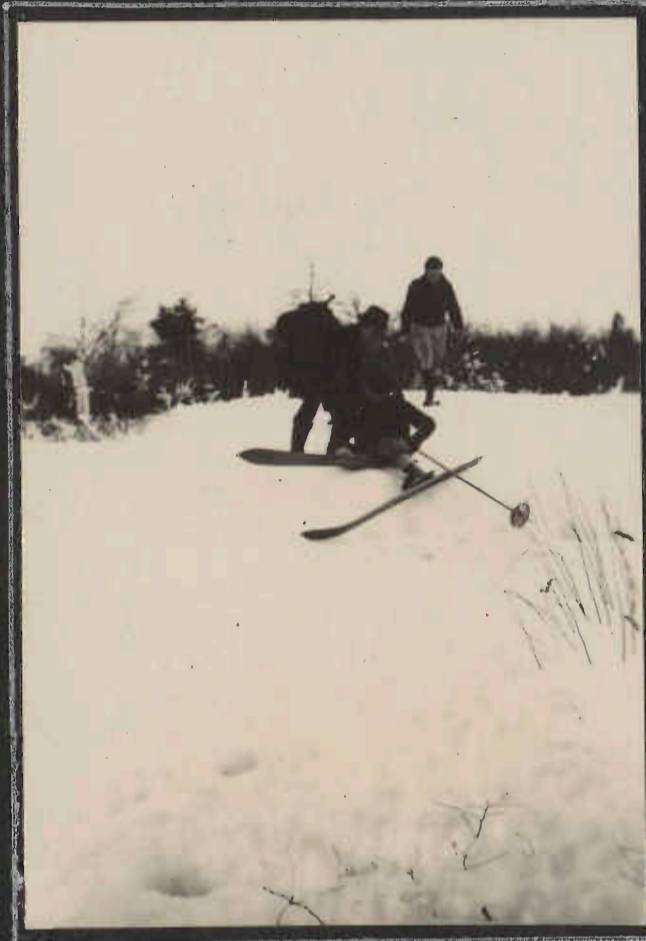
ALONG CATOCTIN MOUNTAIN -
BRADDOCK HEIGHTS
TO HIGH KNOB -

FEBRUARY 15, 1936



LOOKS AS IF SOME-ONE POSED THE GROUP WITH
HIGH KNOB FOR A BACKGROUND --

O.O.H.



F.C.

SEEMS TO BE SOME
SORT OF UPSET AND
TANGLE HERE



O.O.H.

MR. HEARD COULDN'T PASS THIS ONE BY --



GET SET - TO JUMP THE FENCE!

O.O.H.



HIGH KNOB

F.C.



O.O.H.

LUNCH
AT GAMBRILL PARK

WITH SOME OF THE M.C.M. OF YESTERYEAR.

"UP THE SPILLWAY"

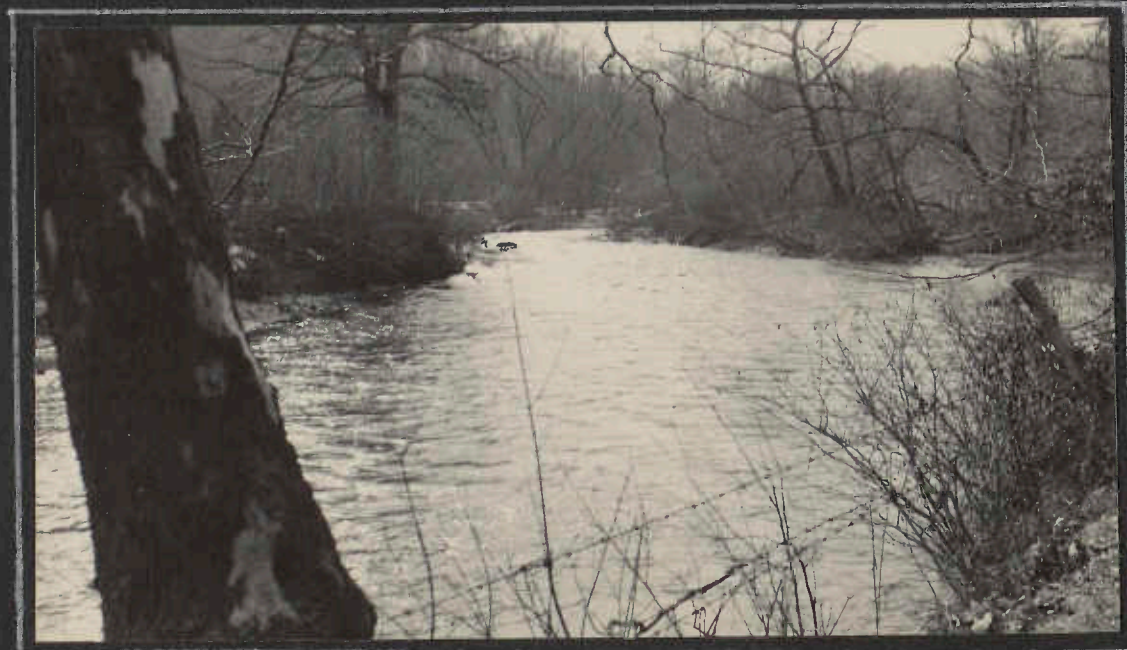
YORK ROAD TO PRETTYBOY DAM - MARCH 8, 1936

A RECORD TURNOUT OF 43 1/2 ADULTS IN 11 CARS (ONE WITH AT LEAST THREE GOOD TIRES) SURPRISED AND GRATIFIED THE SPONSORS OF THIS, THE FIRST SUNDAY AFTERNOON TRIP.

THE FIRST PART OF THE ROUTE LED THRO' FIELDS AND WOODS BORDERING THE GUNPOWDER, PAST AN OLD COVERED BRIDGE AND DELIGHTFUL VIEWS OF HEMLOCK GROVES, ROCKS AND TURBULENT WATER, THEN A SCRAMBLE-- TO SOME OF US A RACE -- OVER A STRETCH OF BOULDER-STREWN CANYON, A CLIMB OVER A ROCKY HILL AND FINALLY AN IMPRESSIVE VIEW OF THE DAM.

ARBUTUS, CROWSFOOT, AND A SYMPLOCARPUS FOETIDUS BLOOM (SKUNK CABBAGE TO YOU) WERE OBSERVED. LACK OF INTERESTING MISHAPS - APART FROM A LITTLE SKI-LESS SKIING - RENDERED YOUR CORRESPONDENT'S TASK SOMEWHAT THANKLESS. A MOST SUCCESSFUL TRIP.

A. D. KENNEDY
IN THE MCM BULLETIN



MCM

BARE HILLS - MARCH 14TH



"DON'T FALL"



"PIGGY-BACK"



"MAIN SPILLWAY"



"HOW ABOUT A SWIM?"



"ON SAFARI"



"MAN ON BANK"



LOCH RAVEN - APRIL 25TH



TITLES BY JOHN BUCK

FRANK CALAFIORE

PEN-MAR TO CALEDONIA



FC

APPALACHIAN TRAIL HIKE



OH

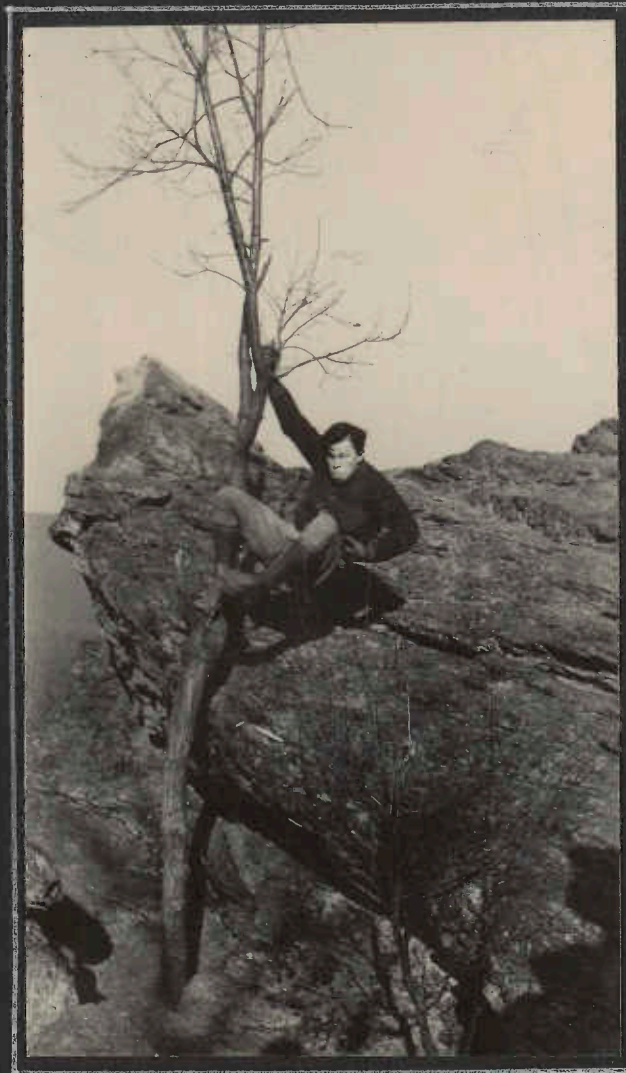
MARCH 22, 1936



OH



FB



FC



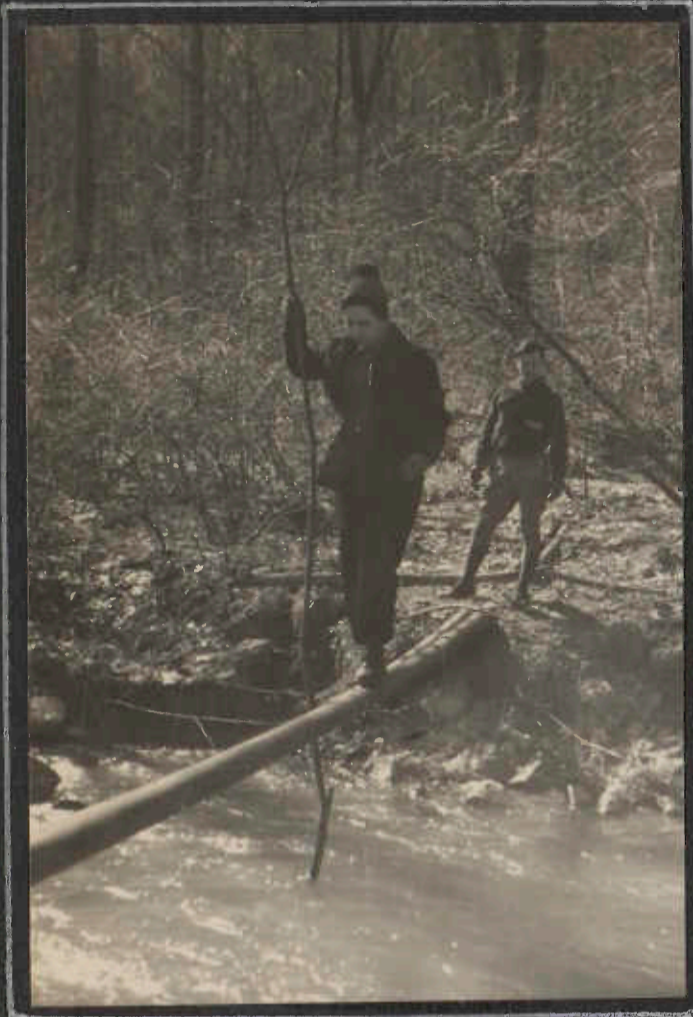
FB



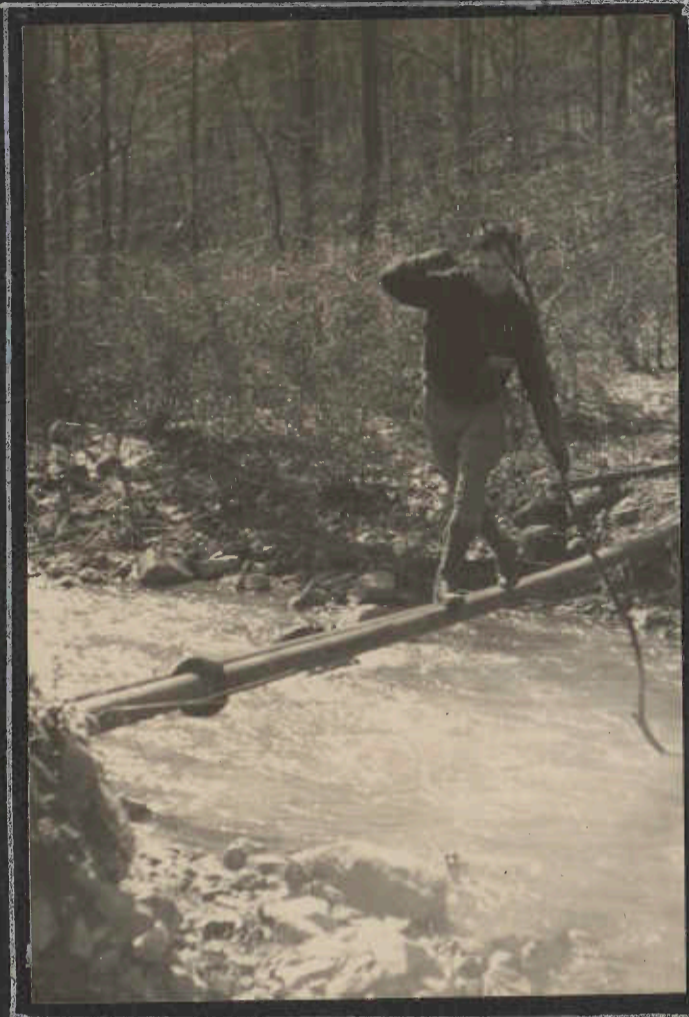
OH

PEN-MAR TO CALEDONIA - MARCH 22, 1936

A "CREEKY" PAGE IN THE LOG



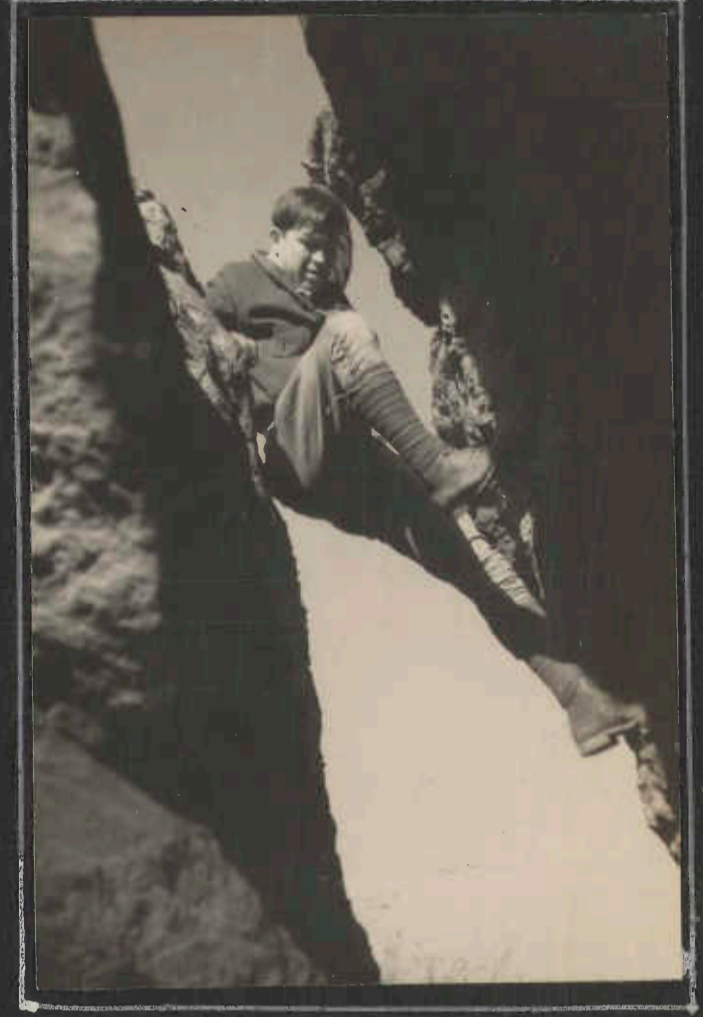
FIRST HE SEES RUTH SAFELY ACROSS



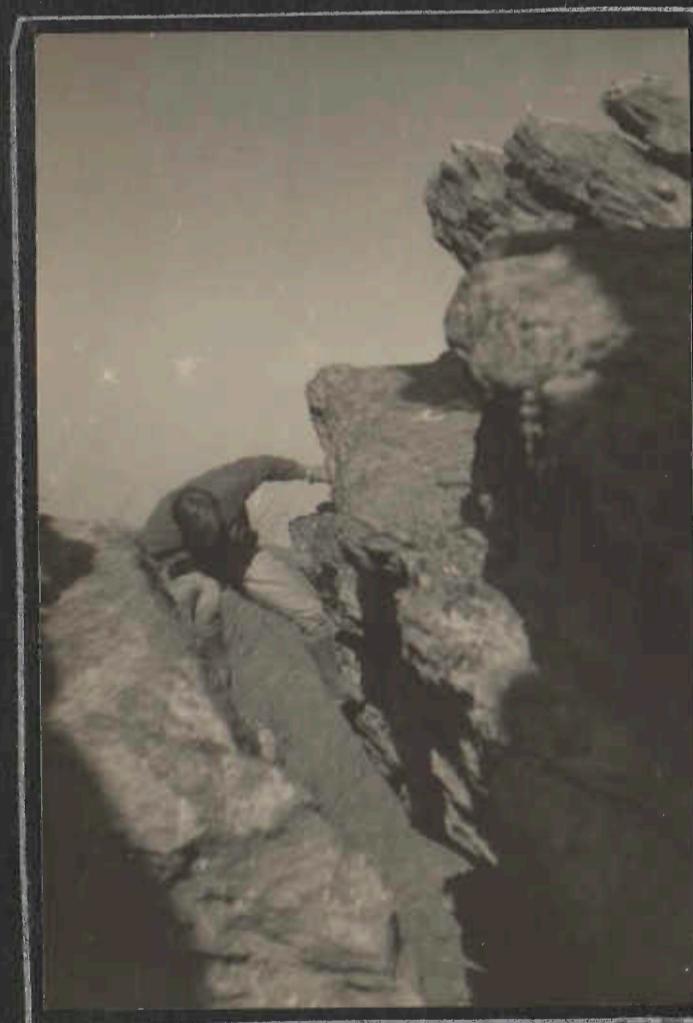
THEN HE TRIES IT HIMSELF



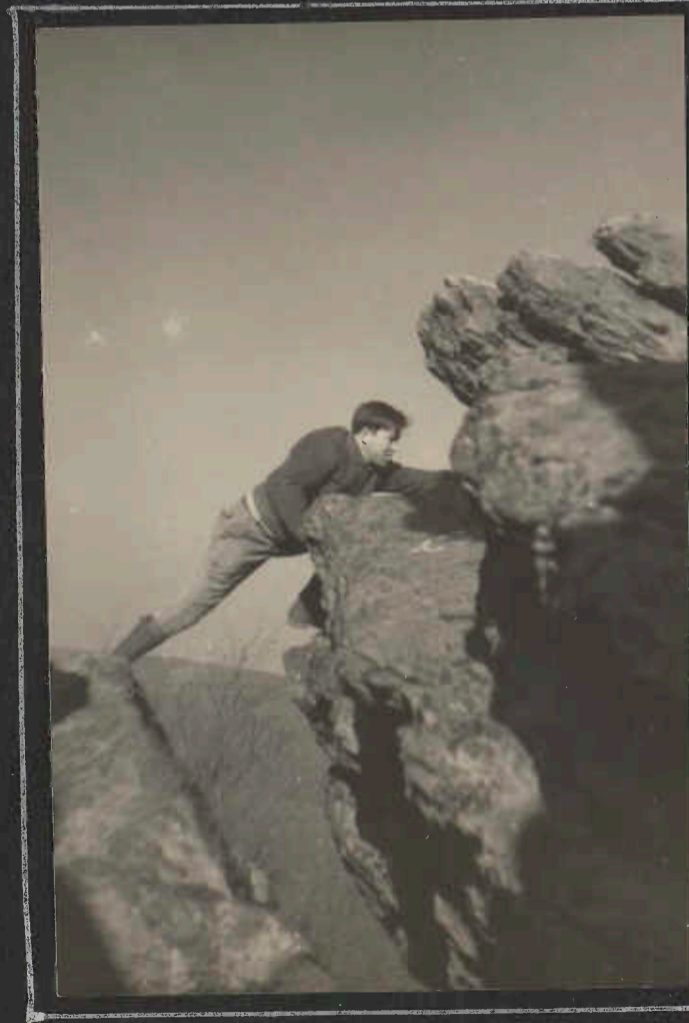
AND UP THE CHIMNEY



INVESTIGATING FOOTHOLDS



OUT IN THE CLEAR



AND ACROSS TO HIGHER ONES



WITH SIMIAN AGILITY



THE VICTOR'S CUP?

OSBORNE O. HEARD

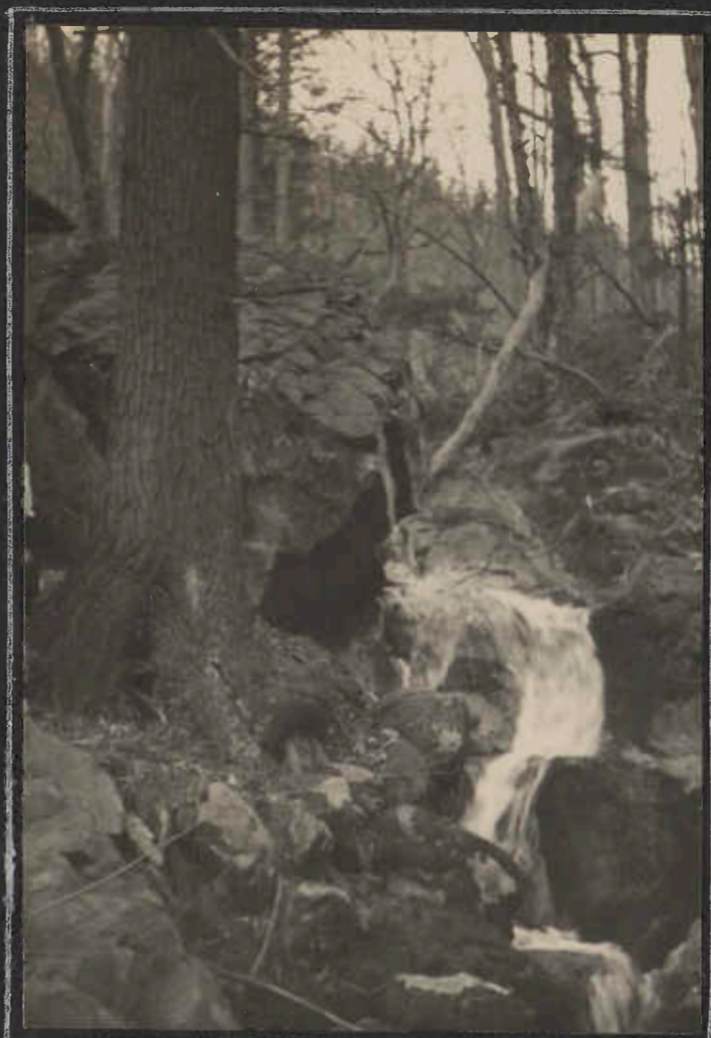
MCM

LITTLE DEVIL STAIRS
APRIL 19TH



ACCORDING TO THE BULLETIN THE FIRST REAL BUS TRIP
IN AGES - JOHN BUCK TITLED THIS PICTURE --
"WORRIED LEADER STORES LIQUID REFRESHMENTS"

FC.



KEYSER RUN, THE STREAM ALONG
LITTLE DEVIL STAIRS

OH

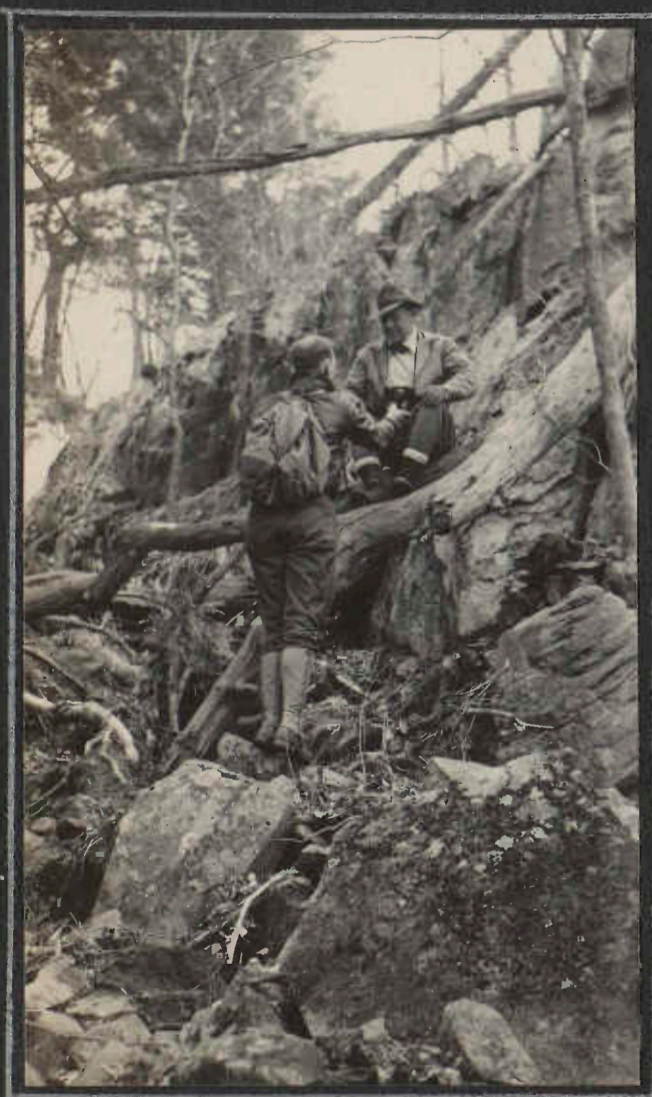
BIG DEVIL STAIRS
MAY 17 TH

1936



IN THE
BIG DEVIL STAIRS
CANYON

FB



FRED SEEMS TO HAVE OS
"TREED"

FC



"THE ORACLE"

OH

THE PICTURE TELLS ITS OWN STORY; FRED
SEEMS READY TO BACK UP THE LEADER ---



ABANDONED FARM
INHABITANTS WERE MOVED OUT WHEN THE SHENANDOAH
NATIONAL PARK CAME INTO BEING -

FC

NORTH MOUNTAIN - STERRETT'S GAP TO THE SUSQUEHANNA - MAY 3, 1936



THE TRIP WAS AN OVERNIGHT AT TUMBLING RUN; THE PICTURES, BY FRANK CALAFIORE, ARE FROM THE SUNDAY HIKE ON THE DARLINGTON TRAIL, FROM STERRETT'S GAP EASTWARD. THE PART FROM LAMBS GAP TO OVERVIEW IS ALSO APPALACHIAN TRAIL.

MEETING THE KABOB HIKING CLUB - AT LAMBS GAP - AND WITH THEM TO HARRISBURG



THIS GROUP PICTURE, BY FLORENCE BURNER, SEEMS TO BE OUR ONLY RECORD OF A TRIP WITH THE PHILADELPHIA TRAIL CLUB JUNE 6-7, 1936.



REMEMBER BUYING THE ICE CREAM AT THE SCHOOL STRAWBERRY FESTIVAL?



ORVILLE COUNTS 'EM
THREE BLAZES ON
THE TREE MUST MARK
AN UPTURN



WE REPEAT -
THE ROCKS OF
DEER CREEK



THE MAN OUT ON
THE EDGE -
GIVES THE COUNTRY-
SIDE THE ONCE OVER.



1936 FOURTH OF JULY TRIP
 GARRETT COUNTY - BLACKWATER CANYON - BACKBONE MOUNTAIN - ETC.
 JULY 3-4-5



CABINS AT CAMP WILL-O-THE-WHISP - DEEP CREEK LAKE



ARTHUR HEISS DOES A BIT OF SKETCHING -



ON THE VIEWPOINT ON BACKBONE MOUNTAIN -
 FIND ANYONE ADMIRING THE VIEW?



VIEWS OF BLACKWATER FALLS -
 NOTE FIGURES ON ROCKS IN
 UPPER RIGHT PICTURE - AND
 THE SPRINGBOARD AND
 DIVER IN THE LOWER PICTURES



1936 FOURTH OF JULY TRIP



FL

SOME PEOPLE REALLY LOOK OVER THE RIM -
BLACKWATER CANYON
AS I LIVE! THERE'S CROWDER'S WATERMELON PANTS!



FLORENCE BURNER RECORDED
THIS GROUP OF PICTURES
ON THE RIM OF BLACKWATER
CANYON.



SWALLOW FALLS

FL



FB



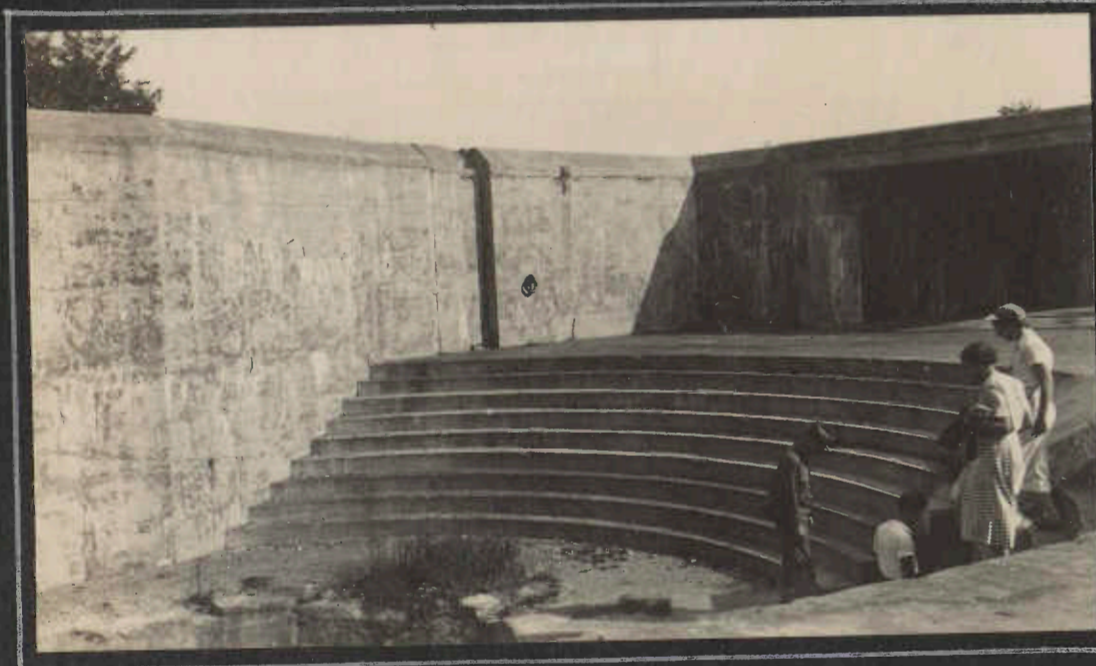
FB

LUNCH ON THE HIGH POINT OF MARYLAND



FORT ARMISTEAD
SEPTEMBER 12

BEACH HIKING



RUINS OF THE FORT



DESOLATE COUNTRY NOW

ON THE A
PEN-MAR - TO THE SMITHSBURG - WOLFVILLE ROAD
SEPTEMBER 20 TH



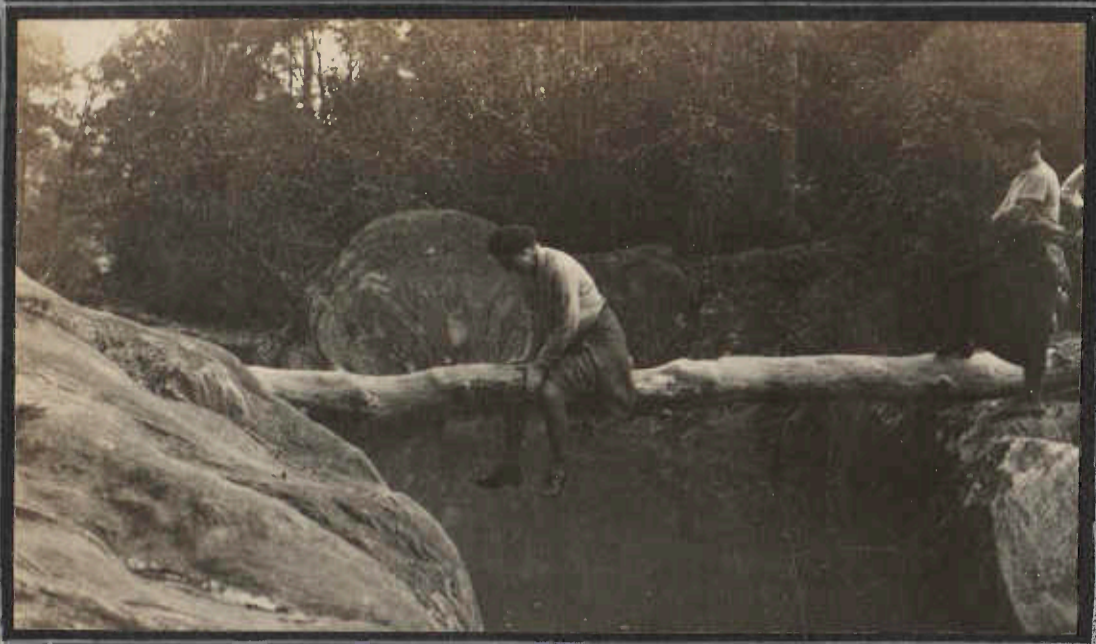
YES - WE CAN RECOGNIZE IT FROM HERE - THE
TRAIL MAP - MARYLAND - NORTH HALF - RUTH
AND FLORENCE CHECK LOCATION -



THRU THE DOORWAY



AND RAIN SET IN -



ON A LOG ON THE BLACK ROCK RUN TRIP OF OCTOBER 17TH - WITH NO FURTHER ATTEMPT TO CAPTION - - -

PATAPSCO RIVER -
COCKEY'S MILL ROAD -
OCTOBER 3D

MARYLAND HILLSIDES



OCTOBER SKY -

ALWAYS WILLING
TO SEE WHAT MAKES
THE WHEELS GO
ROUND -



GETTING DARKER

WONDER IF WE
CAN MAKE
IT WORK ?



RANGE VIEW SHELTER

OCTOBER 10-11

OVERNIGHT TRIP -
SIXTEEN ATTENDING -



DOMESTIC WILD ANIMALS PROWLING ABOUT MADE IT NECESSARY TO HAVE A FENCE AROUND THE SHELTER - AND ROLF VON ANLEFELT MAKES HIS FIRST APPEARANCE IN THE CLUB ALBUM.



THAT TREE ON THE RIGHT MUST BE TRYING TO FOLLOW THE EXERCISES -



NO EXPLANATION OTHER THAN THAT ROLF IS LOOSE -



OUR GUESS IS THAT IT'S AN APPLE TREE



VIRGINIA LAWN-MOWERS TAKE TO THE WOODS -



SUGAR LOAF MOUNTAIN
DECEMBER 13TH

ROCK CLIMBING
"PRACTICE"



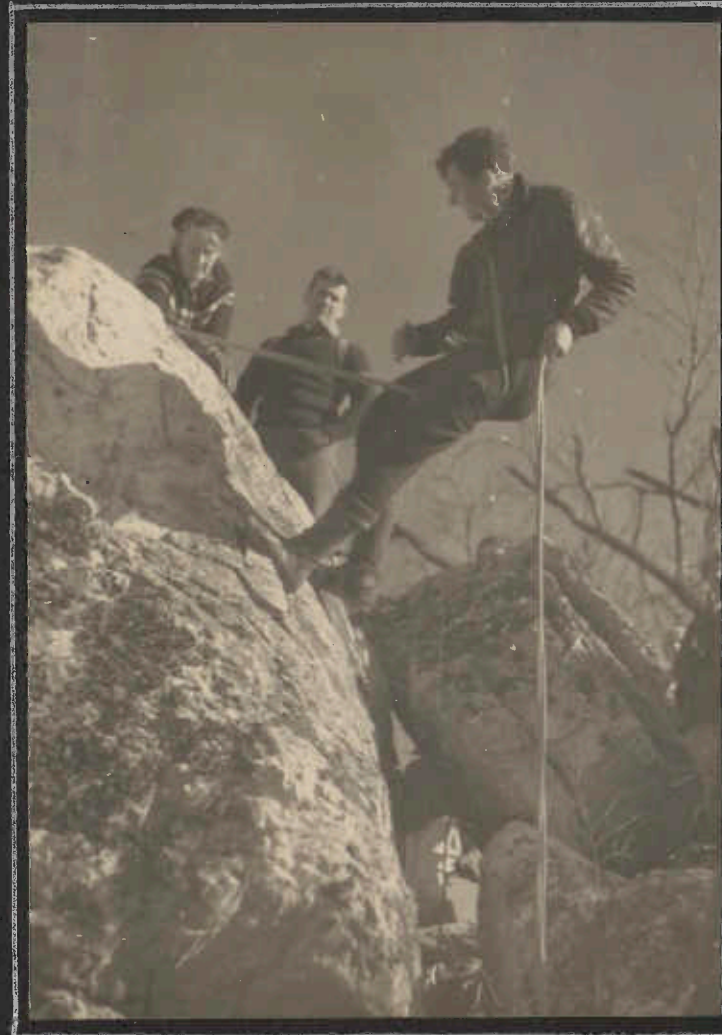
FIRST GET THEM IN THE PROPER
MOOD BY FEEDING WELL ---

OH



LOOKS LIKE HARRIET IS GETTING ROPED IN ---

OH



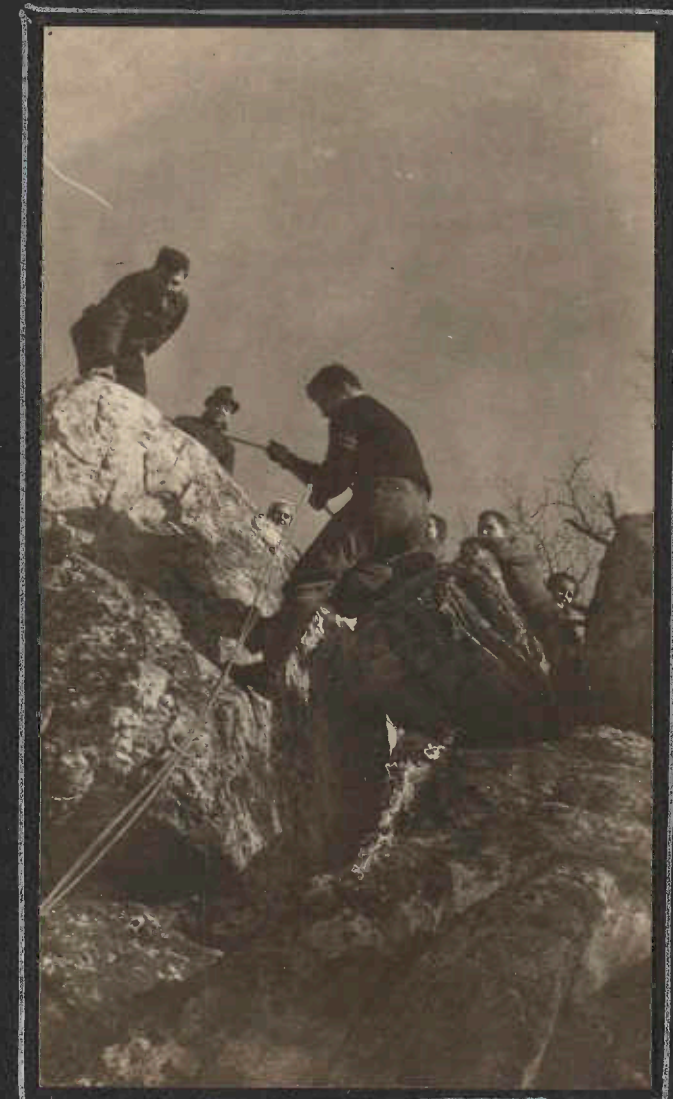
AND PAUL BRADY SHOWS
HOW EASY IT IS

OH



ALICE TAKES ANOTHER LOOK AT THE MOUNTAIN ---

OH



THAT'S RIGHT- NOW MOVE!

FC

SUGAR LOAF MOUNTAIN - DECEMBER 13, 1936



THE TRIP WAS A JOINT ONE WITH THE HAGERSTOWN CLUB, ABOVE-TWO EFFORTS AT THE "GROUP" PICTURE. THERE'S ALWAYS SOME-ONE MISSING AND ALWAYS SOME-ONE LOOKING THE OTHER WAY.



ORVILLE PULLS THE UNEXPECTED -- SO THIS ISN'T ENTIRELY A REAR VIEW OF HIKERS GOING DOWN THE TRAIL.



SOME PEOPLE ALWAYS WANT TO EAT -

MOST PEOPLE TAKE OFF THEIR COATS WHEN THEY TACKLE A JOB LIKE THIS - BUT ALEC PUTS HIS ON!

