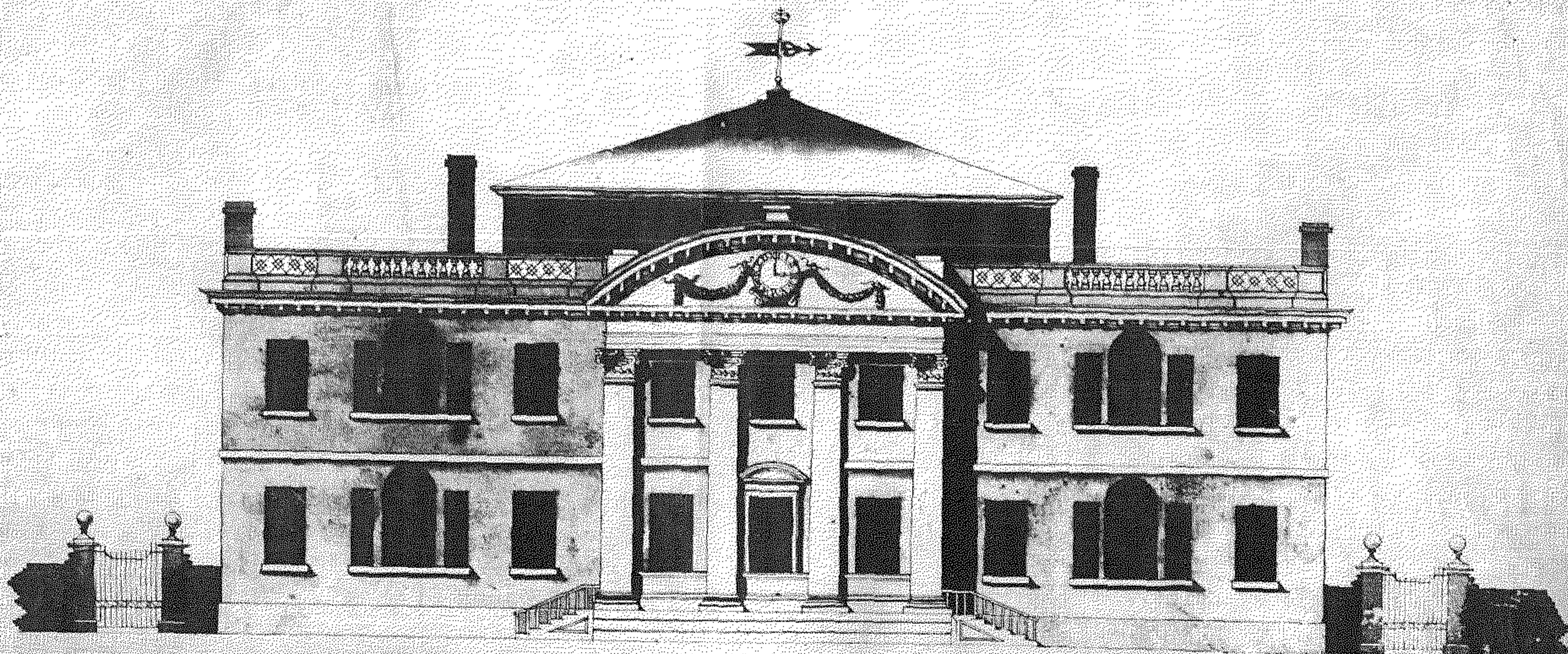


Longitudinal section

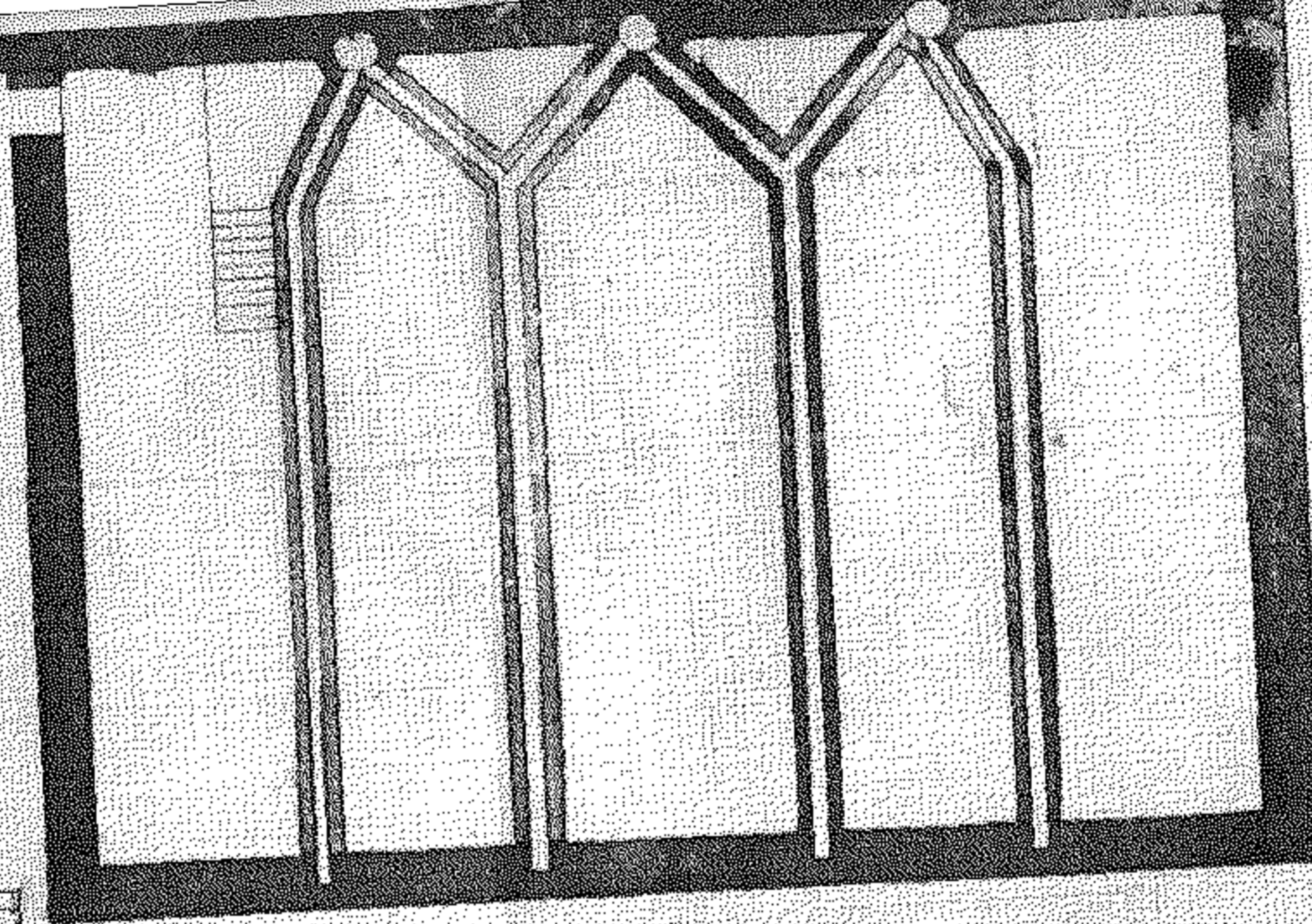
THIS PROJECT MAY NOT BE REPRODUCED IN ANY FORM
WITHOUT PERMISSION OF THE HENRY FRANCIS DU PONT
WITHERS MUSEUM AND IT IS UNDERSTOOD THAT PUB-
LICITY WILL BE ACCOMPANIED BY THE CREDIT LINE

Courtesy, The Winterthur Library, Joseph
Dewey Collection of Manuscripts and
Printed Documents, No. 92.9.2.54

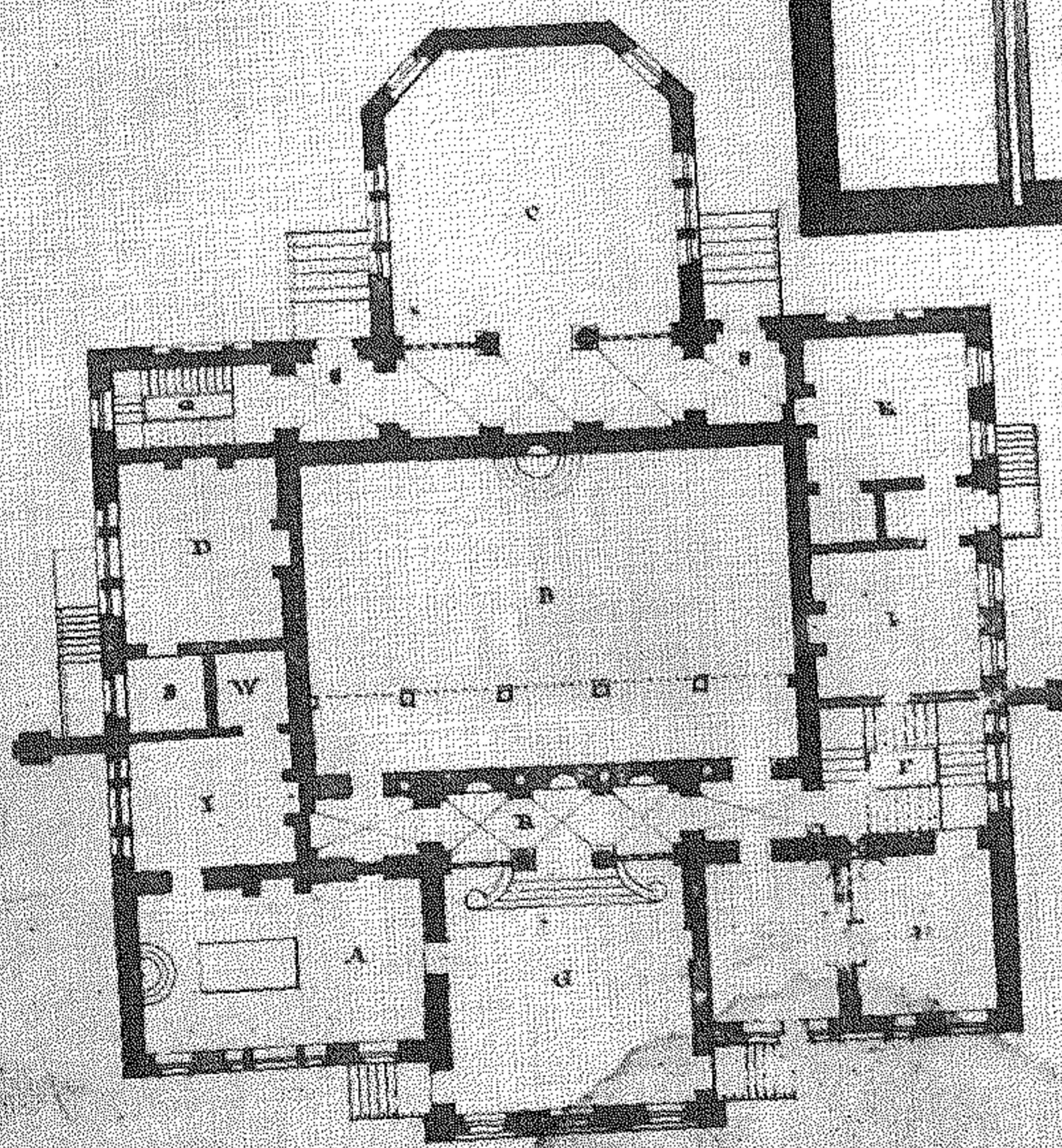
Elevations



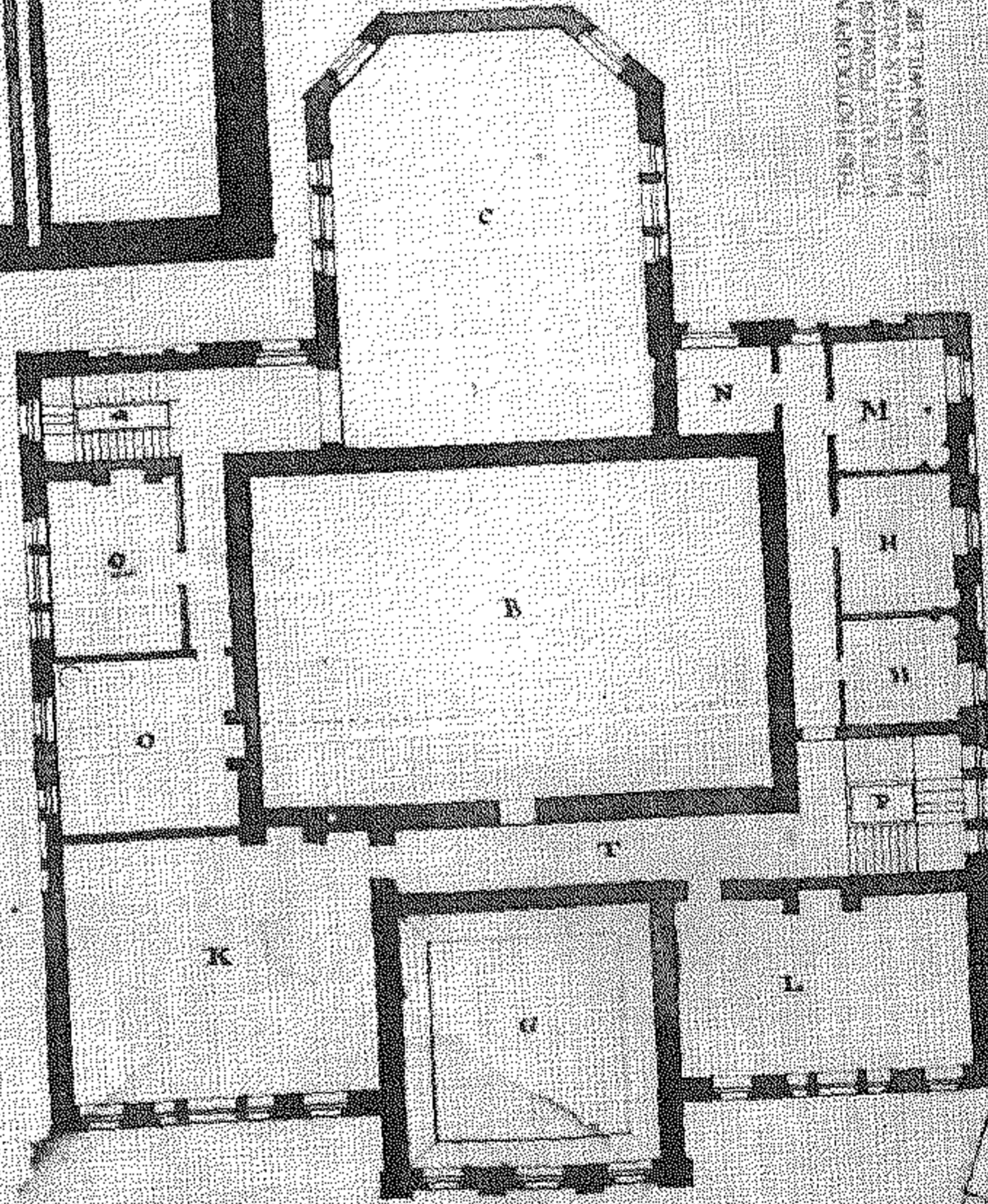
THIS PHOTO COPY MAY BE REPRODUCED IN ANY FORM
WITHOUT PERMISSION OF THE HEARY FRANCES DUANE
MUSEUM FOR MUSEUMS AND IS UNDERSTOOD THAT THE
LOCATION WILL BE ACCOMPANIED BY THE CREDIT LINE
"Courtesy, The Heary Frances Duane
Museum Collection of Manuscripts
Printed Editions, No. 73, 74, 75"



PLAN
of the
FLUE'S

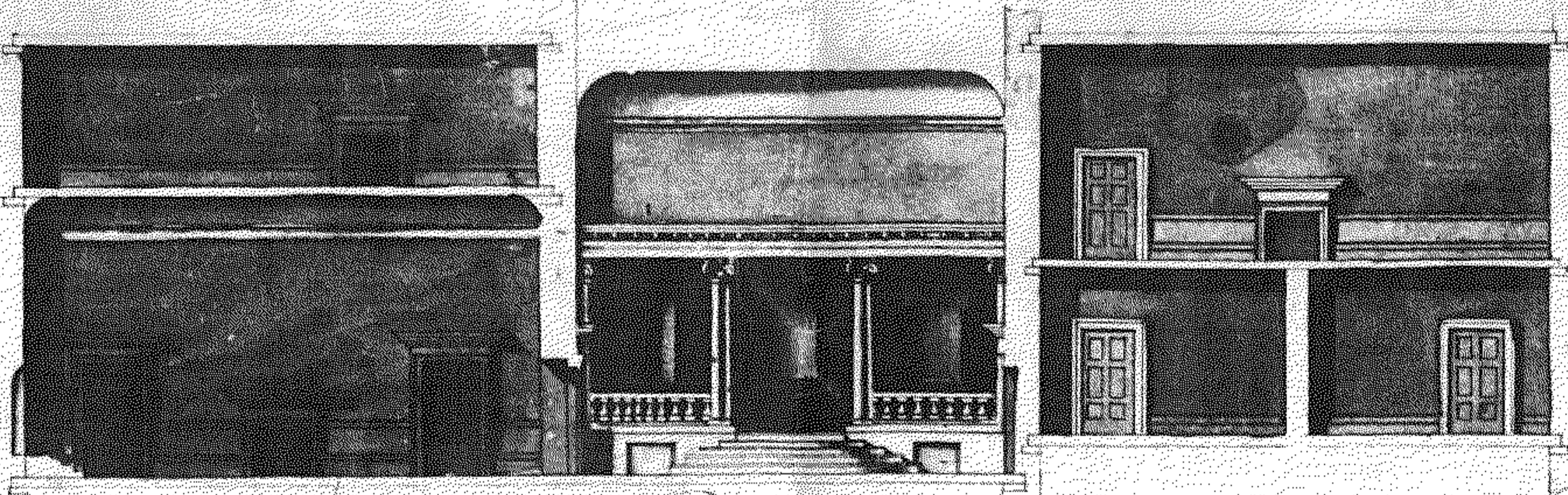


GROUND PLAN



STORY PLAN

THIS PUBLICATION HAS TO BE REPRODUCED IN ANY FORM
WITHOUT THE PERMISSION OF THE UNITED STATES GOVERNMENT
AND IS NOT TO BE REPRODUCED IN ANY MANNER
WHICH WILL BE A VIOLATION OF THE COPYRIGHT LAW
Copyright, 1917, by the United States Government
Drawing of the Flue's, No. 93, 94, 95



Transverse Section

THIS PHOTOGRAPHY NOT TO BE REPRODUCED IN ANY FORM
WITHOUT PERMISSION OF THE DIRECTOR, FRANKLIN D. ROSS,
WESTERN MUSEUM, 505 EAST COLLEGE AVENUE,
LANSING, MICHIGAN. ALL RIGHTS RESERVED.
REPRODUCTION WILL BE AT THE RISK OF THE REPRODUCER.
Courtesy, The University Library
Diverse Collection of Manuscripts
Printed Editions, No. 131. 12. 51