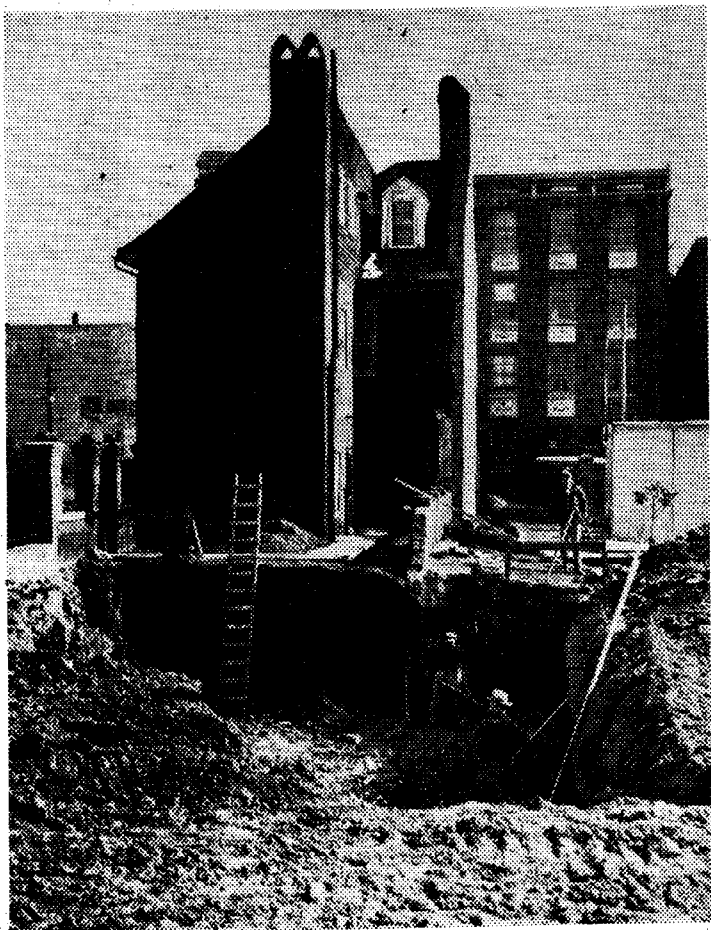


11 March 1953

# THE EVENING SUN



*Excavation work for new \$25,400 Flag House annex nears completion.*

## Flag House Annex Foundation Dug

Preparations are being made today for the pouring later this week of concrete for the basement of the new Flag House annex.

The digging of the foundation, begun Monday, was completed yesterday.

Although underground pipes were hit in the excavation, causing heat to be turned off in the Flag House for parts of two days, a spokesman for the contractor said only "minor difficulties" were encountered in the initial work.

### 100-Day Schedule

The 1½-story brick addition behind the Flag House at Pratt and Albemarle streets is scheduled to be completed 100 days from the beginning of construction.

When completed, the hipped-roof annex will house a first-floor office and museum, and an assembly room on the second floor.

A colonnade will connect the new \$25,400 building with the original Flag House, where in 1813 Mrs. Mary Young Pickersgill and her daughter, Caroline, made the 32-by-42-foot flag which flew over Fort McHenry during the Battle of Baltimore and inspired Francis Scott Key to write the Star Spangled Banner.

### Dimensions Given

Dimensions of the annex will be 34 feet 6 inches by 20 feet 4 inches. The finished cellar will be 7½ feet deep.

After the museum has been established in the annex, the present flag House will be outfitted with furniture from the period during which Mrs. Pickersgill lived in the home.