

COUNTY MOURNS DEATH OF FIRST CITIZEN

Monday morning marked the death of Somerset County's first citizen, Former Governor J. Millard Tawes, 85. Suffering a heart attack at 8:20 in his home in Crisfield, he was pronounced dead about an hour later at McCready Memorial Hospital.

Born in Crisfield, he was the son of the late James B. and Alice Byrd Tawes. Surviving are his wife, Avalynne Gibson Tawes; a son Philip W. Tawes, Crisfield; a daughter, Mrs. Jimmie Lee Wilson, Salisbury; four grandchildren; one great-grandchild; two brothers, A. Wellington and Marvin H. Tawes Sr., both of Crisfield; and a sister, Roselyn Stephenson, Everett, Pa.

Gov. Tawes attended public schools in Somerset County and also Wilmington Conference Academy and Sadler's, Bryant and Stratton Business College. He was awarded honorary degrees by the University of Maryland, Washington College, Maryland State College, and Mt. St. Mary's College.

He was a former member of the Board of Visitors and Governors of Washington College, a former member of the board of trustees of Wesley Junior College and a member of the trustee board of Dickinson College.

At Immanuel Church he was president of the board of trustees and a member of the Barraca Sunday School Class. Gov. Tawes was a delegate to the Methodist general conference in San Francisco, Calif., in 1952. He was a former treasurer of the Peninsula Conference Education Society, Inc.

He was a member of the board of directors in Crisfield of McCready Memorial Hospital; a past president of the Maryland State Firemen's Association and

a former chairman of the scholarship committee of that organization and a life member of the Crisfield Volunteer Department. Additionally, he was a past president of the National Association of State Auditors, Comptrollers and Treasurers and a member of the executive committee of the National Governor's Conference in 1961.

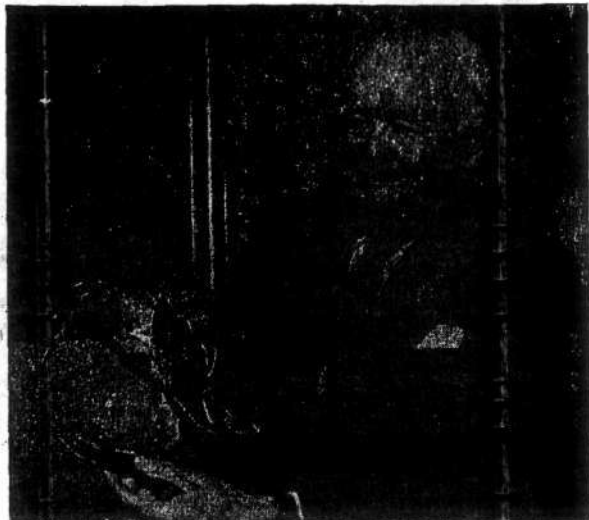
Gov. Tawes was a charter member and a past president of the Crisfield Rotary Club. He was also a member of the Crisfield Elks Lodge 1044, the Knights of Pythias, the Advertising Club of Baltimore, the Maryland Society of Pennsylvania, the Eastern Shore Society of Baltimore, Masonic Lodge 147, the Shrine, Order of Eastern Star Chapter 28, the Eastern Shore Shrine Club, the Tall Cedars of Lebanon and the Scimeter Club. He was also a past president of the Chesapeake Bay Fishing Fair Association.

His political career began in 1930 when he was elected to the office of Clerk of Court and the next 36 years were spent in public life. He served as State Comptroller, state banking commissioner and finally governor. He returned to his home in Crisfield in 1967 to retire, only to become the center of the political activity in Somerset.

Funeral services were held Wednesday at the Immanuel United Methodist Church.

A special contingent of Maryland State Policemen acted as an honor guard and also pallbearers.

Officiating was the Rev. Dallas W. Butler of Chestertown, who was assisted by the Immanuel Church pastor, the Rev. Bob Kelly; the Rev. Howard P. Ketterman Sr., pastor of the Asbury United Methodist



Church in Crisfield, and the Rev. Percy N. Reese, rector of St. Paul's Episcopal Church, near Marion, and a neighbor and close friend of Gov. Tawes.

Interment was in the Sunnyridge Memorial Park in Crisfield.

The family suggests that, as a tribute to

the memory of the deceased, contributions may be made to the Alice Byrd Tawes Nursing Home, the McCready Memorial Hospital or the Immanuel United Methodist Church.

Arrangements were handled by the Bradshaw and Sons Funeral Home in Crisfield.