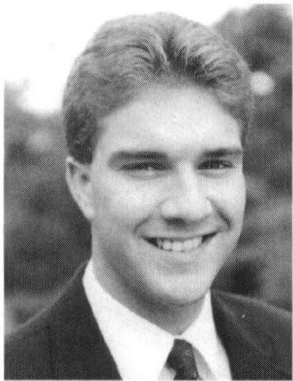


Member, Governor's Executive Advisory Council, 1991; Commission to Save the Lighthouses, 1995-96; Bainbridge Re-Use Advisory Committee, 1996-97; Task Force to Study the Preservation and Enhancement of Maryland's Heritage Resources, 1998- (protection & preservation committee); Governor's Task Force on Eastern Shore Economic Development, 1999-; Maryland Task Force on the Principalship, State Department of Education, 1999-; Task Force to Study College Readiness for Disadvantaged and Capable Students, 2000-.

*Born in Summit, New Jersey, June 12, 1949. Attended North East High School; Wilmington College, B.A. (history & political science), 1971; University of Delaware, M.Ed., 1977; Wilmington College, Ed.D., 1998. Public school principal. Chair, Cecil County Democratic Central Committee, 1974-78. Member, Ethics Committee, Maryland Democratic Party, 1975-78. President, Cecil County Public Administrators and Supervisors Association, 1990-. Member, National Association of Secondary School Principals; National Middle School Association. Governor's Outstanding Citizenship Citation, 1975; Outstanding Young Men of America, 1980. Principal of National School of Excellence, U.S. Dept. of Education, 1991. Married; three children.*



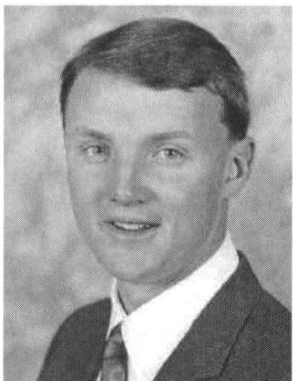
### **JAMES E. RZEPKOWSKI**

Republican, District 32, Anne Arundel County

Lowe House Office Building, Room 214A  
84 College Ave., Annapolis, MD 21401 - 1991  
(410) 841-3233, 1-800-492-7122, ext. 3233 (toll free)  
e-mail: james\_rzepkowski@house.state.md.us  
fax: (410) 841-3235

Member of House of Delegates since 1995. Member, Ways and Means Committee, 1995- (transportation subcommittee, 1995, 2001-; housing & social issues subcommittee, 1996; education subcommittee, 1997-2000). Member, Special Committee on School Enrollment Management, 1996-97. Staff, Senate Minority Leader's office, 1992.

*Born in Annapolis, Maryland, March 8, 1971. Attended Old Mill Senior High School, Millersville; University of Maryland College Park, B.A. (government & politics), 1993 (Phi Beta Kappa honors). State-licensed, insurance-office manager, State Farm Insurance. Staff, Republican State Central Committee, 1992. Alternate delegate, Republican Party National Convention, 1996. Member, Anne Arundel County Republican Central Committee, 1996-. Charter President, Eta Epsilon Chapter, Pi Kappa Phi Fraternity, 1991-92. Member, Council no. 7025, Knights of Columbus. Member, Phi Beta Kappa National Honor Society; Sigma Circle of Omicron Delta Kappa, National Leadership Honor Society; Golden Key, National Academic Honor Society. H. C. Byrd Citizenship Award, University of Maryland College Park. Outstanding Young Men of America. Charter member, Maryland Medallion Society. Legislator of the Year, Anne Arundel County Trade Council, 1996. Member, St. Phillip Neri Roman Catholic Church. Married.*



### **KENNETH D. SCHISLER**

Republican, District 37B, Talbot, Caroline, Dorchester & Wicomico Counties

Lowe House Office Building, Room 415  
84 College Ave., Annapolis, MD 21401 - 1991  
(410) 841-3429, 1-800-492-7122, ext. 3429 (toll free)  
e-mail: kenneth\_schisler@house.state.md.us  
fax: (410) 841-3850

P. O. Box 1936  
130 North Washington St., Easton, MD 21601 - 1936  
(410) 822-8682; fax: (410) 820-6586

Member of House of Delegates since 1991. Member, Environmental Matters Committee, 1991- (environmental & natural resources subcommittee, 1995-99; agriculture, environment & natural resources subcommittee, 1999-; public utilities subcommittee, 1999-);

Joint Committee on Chesapeake Bay Critical Areas, 1992-. Deputy Minority Whip, 1994-97. Chair, Talbot County Delegation. Member, American Legislative Exchange Council (task force on energy, environment, & natural resources).

Member, Task Force to Study Retail Electric Competition and the Restructuring of the Electric Utility Industry, 1997-98; Solid Waste Management Task Force, 1998; Governor's Task Force on Eastern Shore Economic Development, 1999-.