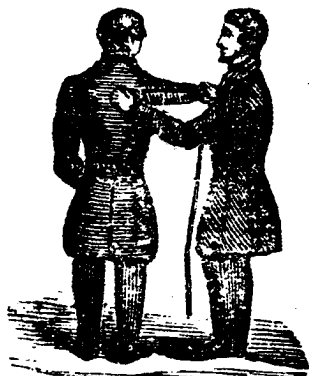


**CHAS. C. REINHARDT & CO.**  
**SURGICAL AND DENTAL**  
 INSTRUMENT MANUFACTURERS,  
 9 Light street,

ADJOINING THE FOUNTAIN INN,

Would respectfully call the attention of the public, especially the medical profession, to their extensive variety of **SURGICAL** and **DENTAL INSTRUMENTS**. Also, Patent Glass, Pad, Double and Single **TRUSSES**, for the support and cure of Rupture or Hernia.

**JAMES T. PARSONS**  
 MERCHANT



**TAILOR,**

No. 115 BROADWAY,

*Between Gough & Bank-sts.*

East Baltimore.

**PETER BUCHEMER,**  
**MERCHANT TAILOR**

AND DEALER IN

**READY-MADE CLOTHING,**

No. 53 President street,



Always on hand a large assortment of **FASHIONABLE CLOTHING**, made up in the latest styles, on reasonable terms, *cheap for cash*. He requests his old friends and the public to give him a call. Clothing made to order at short notice.

The best of **LINEN BOSOM SHIRTS** always on hand.

**THOMAS BRUSCUP, JR.**  
**MERCHANT TAILOR,**

No. 42 NORTH GAY STREET,

*Near Odd-Fellows' Hall,*



Keeps on hand a general assortment of **READY-MADE CLOTHING**, cut in the latest style, and made in the best manner. Also, a good selection of **CLOTHS, CASSIMERES** and **VESTINGS**, which will be made up at short notice, and on pleasing terms.

**C. B. KEYWORTH & SON,**  
**DRAPERS AND TAILORS,**

No. 286 BALTIMORE STREET,



Have always on hand a large assortment of **CLOTHS, CASSIMERES** and **VESTINGS** of the finest and latest importations, suitable for Gentlemen's wear, which they are prepared to make up to order, in the most approved style, and at prices commensurate with the qualities of the goods. It is deemed unnecessary to say more, as their long experience in business, has rendered the character of their establishment familiar, not only in the city but in every section of the country where gentlemen are characterized by elegance of apparel or correct taste in dress.

FREDERICK HILBERG.

FREDERICK HINKELMAN.

**HILBERG & HENKELMAN,**

MERCHANT

**TAILORS**

NO. 6

S. CALVERT STREET,

