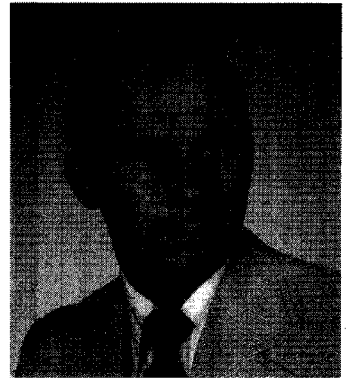
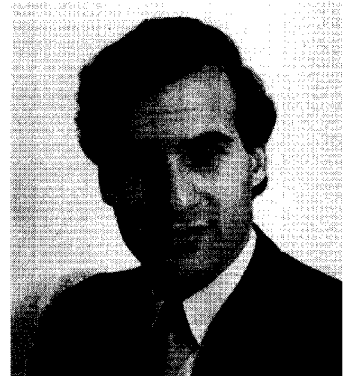


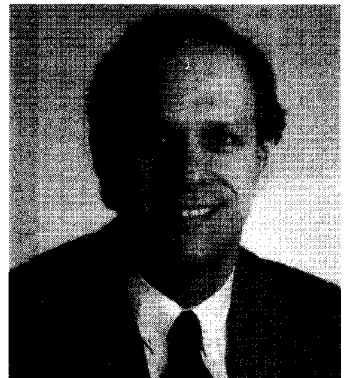
DONALD F. MUNSON, Republican, District 2, Washington County. Member, House of Delegates, 1975-90; Economic Matters Committee (unemployment insurance subcomm.); Joint Committee on Legislative Ethics. Vice-Chair, Western Maryland Delegation, 1987-90. Member, Senate since 1991; Budget and Taxation Committee, 1992— (public safety, transportation, economic development & natural resources subcomm.; pensions subcomm.); Joint Committee on Federal Relations, 1991—; Spending Affordability Committee, 1995—; Joint Subcommittee on Program Open Space and Agricultural Land Preservation, 1995—; Special Joint Task Force on Transportation, 1995—. *Born in Hagerstown, Maryland, December 21, 1937; early years in Hagerstown & Williamsport. Washington Co. public schools; Capitol Page School (page, U.S. House of Representatives under Rep. DeWitt S. Hyde, 1953-55); The Johns Hopkins Univ., B.S., 1968. Served in U.S. Army Reserves. Governor's Commission on Landlord-Tenant Affairs; Tri-County Council for Western Maryland; Citizens Advisory Board, Western Maryland Center, 1978-90; Liability Insurance Task Force, 1985; Maryland Advisory Commission on Manufacturing Competitiveness, 1995—. Delegate, Republican Party National Convention, 1976, 1988, 1992. Washington Co. Republican Club; Washington Co. Historical Society; Washington Co. Assoc. for Retarded Citizens; Antietam Exchange Club; North American Rod & Gun Club; Alsatia Club. Married; one child. District office: 28 W. Church St., Hagerstown 21740-4808; tel. (301) 791-4511. Annapolis office: 405 James Senate Office Bldg., 21401-1991; tel. (410) 841-3609.*



JOHN A. PICA, JR., Democrat, District 43, Baltimore City. Member of House of Delegates, 1979-82. Member of Senate since 1983. Deputy Majority Leader. Senate Chair, Joint Committee on Administrative, Executive and Legislative Review, 1995— (member, 1985-86). Member, Finance Committee, 1995— (health subcommittee); Executive Nominations Committee, 1995—; Legislative Policy Committee, 1995—; Special Joint Committee on Pensions, 1995—; Property-Tax Payment Task Force, 1995—. Member, Judicial Proceedings Committee, 1983-94; Joint Committee on Federal Relations, 1985-86; Special Joint Committee on Ports, 1985-86; Tort and Insurance Reform Oversight Committee, 1991-93; Rules Committee, 1991; Special Joint Committee on Economic Development Strategy; Workers' Compensation Benefit and Insurance Oversight Committee, 1995. Chair, Joint Committee on Reapportionment and Redistricting, 1991-92. Chair, Baltimore City Senate Delegation. *Mount St. Joseph High School; Villanova University, B.A. (dean's list; varsity lacrosse); The Johns Hopkins University; Loyola College, M.B.A.; University of Baltimore School of Law, J.D., 1975. Attorney. Member, Maryland State Bar Association. Member, Community Services Advisory Commission, 1987—; Maryland 1992 Commission, 1989-92; Governor's Commission on Baltimore City Automobile-Insurance Rate Reduction, 1995—. Chosen Outstanding Young Men of America, by National Jaycees, 1981. Two daughters. Annapolis office: 402-A James Senate Office Bldg., 21401-1991; tel. (410) 841-3145.*



PAUL G. PINSKY, Democrat, District 22, Prince George's County. Member of House of Delegates, 1987-94; Environmental Matters Committee, 1987-94. Member of Senate since 1994. Member, Economic and Environmental Affairs Committee, 1994— (health subcommittee); Joint Committee on Federal Relations, 1995—; Special Joint Committee on Vehicle Emissions Inspection Program, 1995—. *Born in Camden, New Jersey, March 5, 1950. Moorestown Friends School, Moorestown, N.J.; George Washington University, B.A. (public affairs), 1972, M.A. (education), 1978. Educator, Prince George's County Public Schools, 20 years. President, Prince George's County Educators' Association, 1983-87, representing over 6,000 professional school employees. Member, State Council on Cancer Control, 1995—. Executive Board, Maryland Citizens Action Coalition. Member, National Education Association; Maryland State Teachers Association. Legislative Award, Chesapeake Bay Foundation, 1994. Betty Tyler Award, Planned Parenthood, 1992. Outstanding Contribution to Youth award, Prince George's County Council of PTAs, on behalf of Prince George's County Educators' Association. Outstanding Contribution to the Community award, National Conference of Christians and Jews, Prince George's County Chapter. Married; two daughters. Annapolis office: 303 James Senate Office Bldg., 21401-1991; tel. (301) 858-3155, (410) 841-3155.*



JEAN W. ROESSER, Republican, District 15, Montgomery County. House of Delegates, 1987-94; Commerce and Government Matters Committee, 1994; Special House Committee on Drug and Alcohol Abuse; Constitutional and Administrative Law Committee, 1987-90; Environmental Matters Committee, 1991-93. Member, Senate since 1995; Finance Committee, 1995— (welfare reform subcomm.); Joint Committee on Health Care Delivery and Financing, 1995—; Joint Committee on Legislative Ethics, 1995—; Joint Committee on State Economic Development Initiatives, 1995—. *Women Legislators of Maryland. Born in Washington, DC, May 8, 1930. Trinity College, B.A., 1951; Catholic University of America, graduate study (economics). Former newspaper reporter, Suburban Record, Montgomery County. Member, Governor's Energy Task Force, 1991—; Commission to Save the Lighthouses, 1992-94. Alternate Delegate, Republican Party National Convention, 1992. Past vice-president, Maryland Federation of Republican Women. Past president, Montgomery County Federation of Republican Women; past president, Potomac Women's Republican Club. Member, Potomac Appalachian Trail Club. Founding member, Montgomery County Arts Council. Member, area citizens associations, Chambers of Commerce. Former Congressional liaison assistant, U.S. Information Agency. Married; three children. District office: 10830 Fox Hunt Lane, Potomac 20854-1553; tel. (301) 299-9046. Annapolis office: 308 James Senate Office Bldg., 21401-1991; tel. (301) 858-3169, (410) 841-3169.*

