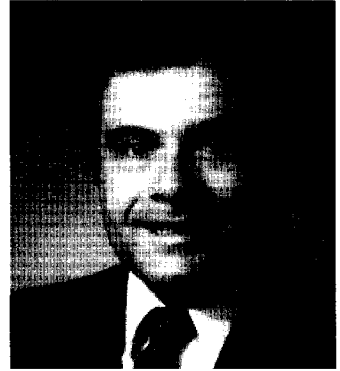
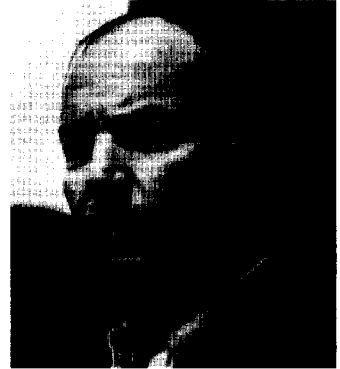


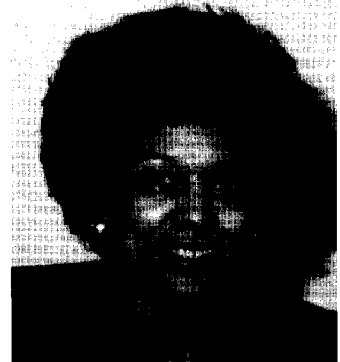
**PHILIP C. JIMENO**, Democrat, District 31, Anne Arundel County. Member of House of Delegates, 1979-85; Appropriations Committee (education & human resources subcommittee; law enforcement & transportation subcommittee); Joint Committee on Juvenile Justice. Vice-Chairman, Anne Arundel County Delegation, 1982, 1985. Member of Senate since 1985. Member, Judicial Proceedings Committee, 1985—. Member, Joint Committee on Administrative, Executive and Legislative Review, 1987-93. Chairman, Anne Arundel County Senate Delegation. *Born in Fairmont, West Virginia, May 28, 1947. Attended Fairmont Senior High School; Fairmont State College, B.S. (business administration) 1969; Coppin State College, M.Ed., 1974. Member, Commission to Save the Lighthouses. Served as Chairman, Anne Arundel County Transportation Advisory Commission. Served as Chairman, Anne Arundel County School Board Selection Process. Selected as the State's Attorneys' Association Legislator of the Year for 1986. Married; two children. Annapolis office: 305 James Senate Office Bldg., 21401-1991; tel. (410) 841-3658.*



**JULIAN L. LAPIDES**, Democrat, District 44, Baltimore City. Member, House of Delegates, 1963-67. Member, Senate since 1967. Senate Chair, Joint Budget and Audit Committee; Joint Committee on Legislative Ethics. Member, Budget and Taxation Committee (public safety, transp., economic development & natural resources subcomm.; capital budget subcomm.; pensions subcomm.); Legislative Policy Committee; Special Joint Committee on Pensions; Joint Subcommittee on Program Open Space and Agricultural Land Preservation; Joint Subcommittee on State's Capital Program; Joint Expenditure Study Group on Law Enforcement and Transportation. *Born in Baltimore, Maryland, September 17, 1931. The Johns Hopkins University; Towson State College, B.S., 1954. Served in U.S. Army, 1954-56. University of Maryland School of Law, LL.B., 1961. Admitted to Maryland Bar, 1965. Member, Maryland Housing Policy Commission; State Planning Commission; Hall of Records Commission; Museum Assistance Review Panel; Maryland State Arts Council. Pres., Mt. Royal Democratic Club. Member, Peale Museum; Baltimore Museum of Art; Walters Art Gallery; Victorian Society in America. Life member, NAACP. Bd. member, Lillie Carroll Jackson Museum; Council, American Antiquarian Society. Past pres., M.d. Kidney Foundation; regional vice-pres., National Kidney Foundation, 1970-72. Married. District office: 807 Cathedral St., Baltimore 21201; tel. (410) 752-4519. Annapolis office: 116 Presidential Wing, James Senate Office Bldg., 21401-1991; tel. (410) 841-3686.*



**GLORIA GARY LAWLAH**, Democrat, District 26, Prince George's County. Member, House of Delegates, 1987-90. Member, Senate since 1991; Economic and Environmental Affairs Committee; Joint Committee on Investigation. *Born in Newberry, South Carolina, March 12, 1939, daughter of Eugene Calvin Gary and Erlene Guess Gary. Hampton University, B.S.; Trinity College, M.A.; George Washington University. Administrator, DC public schools. Child Care Administration Advisory Council; Advisory Committee for Educational Block Grants; Transp. Planning Bd., Washington Council of Governments. PG Government Review Task Force for Public Safety (co-chair, 1982). National Hook-up of Black Women; National Council of Negro Women (life member); NAACP; Alpha Kappa Alpha; Public Access Cable Corp., 1980-85; Family Crisis Center, 1982-84; Coalition on Black Affairs, 1980-90; Center for the Aging, Greater SE Community Hospital Foundation, 1985-87. Democratic State Central Committee, 1982-86. Delegate, Democratic Party National Convention, 1984, 1992. Oxon Hill Democrats; John Hanson Women's Democratic Club; Black Democratic Council. Hillcrest-Marlow Planning Bd., 1982-90; National Political Congress of Black Women, 1984-90; Links; PG Co. Alliance of Black Elected Officials; National Assoc. of Minority Political Women. PG Co. Women's Hall of Fame. Sargent Memorial Presbyterian Church. Married; three children. District office: 3801 24th Ave., Hillcrest Heights 20748; tel. (301) 894-3082. Annapolis office: 307 James Senate Office Bldg., 21401-1991; tel. (301) 858-3092, (410) 841-3092.*



**LAURENCE LEVITAN**, Democrat, District 15, Montgomery County. House of Delegates, 1971-74. Member, Senate since 1975. Chair, Budget and Taxation Committee, 1979—; Spending Affordability Committee; Joint Committee on Income Tax Reform. Member, Rules Committee; Legislative Policy Committee; Joint Budget and Audit Committee; Joint Committee on Management of Public Funds. Past member, Special Joint Committee on Legislative Data Systems; Task Force on Catastrophic Liability Insurance Fund and Reinsurance Exchange. Southern Legislative Conf. (chair, fiscal affairs & government operations comm.); National Conf. of State Legislatures (fiscal affairs & oversight comm.; vice-chair, pensions comm.). *Born in Washington, DC, October 22, 1933. Washington and Lee University, B.S., 1955; George Washington Law School, J.D., 1958. Admitted to Maryland Bar, 1964. Attorney. Of Counsel, Baker & Hostetler. Vice-Chair, M.d. Committee on Federal Income Tax Conformity, 1982-83. Past member, Commission on Compensation and Personnel Policies, 1979-86; Task Force on School Construction Finance, 1987; Task Force to Study Revision of Inheritance and Estate Tax Laws, 1987; Advisory Council on Legal Services to the Poor, 1987-88; Program Open Space Allocation Committee. Bd. of Directors, University of Maryland Medical System Corp. Bd. of Trustees, Greater Washington Jewish Community Foundation. Married. District office: 11426 Georgetowne Dr., Potomac 20854. Annapolis office: 100 James Senate Office Bldg., 21401-1991; tel. (301) 858-3169.*

