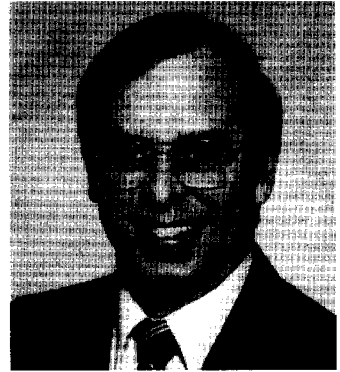
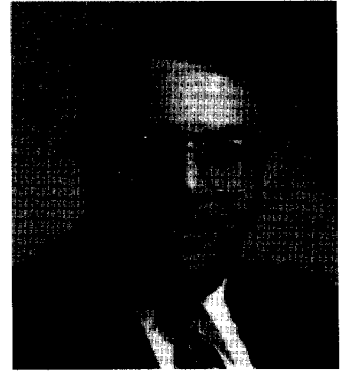


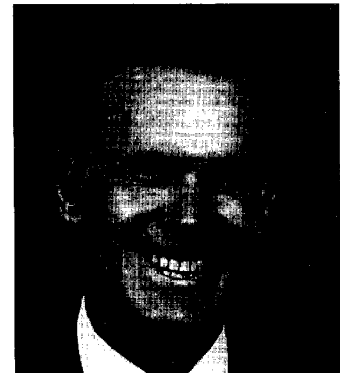
**JOHN W. DERR**, Republican, District 3, Frederick & Washington Counties. Member of Senate since 1983. Member, Finance Committee, 1989—; Executive Nominations Committee; Special Joint Committee on Pensions. Senate Chair, Joint Committee on Protocol. Former member, Economic and Environmental Affairs Committee; Special Joint Committee on Transportation, 1983; Tort and Insurance Reform Oversight Committee, 1988-93; Special Joint Committee on Energy Pricing, 1990-91. *Born in Frederick, Maryland, March 18, 1941. Frederick High School; University of Maryland, B.S., 1963; The American College, C.L.U., 1977. Served in U.S. Army Reserves, 1963-69. Insurance agent. Member, Task Force to Study Incentive Awards Program for State Employees, 1990. Member, Republican Local Central Committee, Frederick County, 1982-83. Past president, Frederick Jaycees; named Jaycee International Senator, 1977. Past president, Frederick County Heart Association; Frederick Life Underwriters Association; board of trustees, Frederick Memorial Hospital. Married; four children. District office: 13 W. 2nd St., Frederick 21701; tel. (301) 695-5733. Annapolis office: 408 James Senate Office Bldg., 21401-1991; tel. (410) 841-3575.*



**ARTHUR DORMAN**, Democrat, District 21, Prince George's County. Member, House of Delegates, 1965-75; Legislative Council, 1971-75. Speaker Pro Tem, 1971-75. Chair, Prince George's County Delegation, 1971-75. Member, Senate since 1975. Vice-Chair, Economic and Environmental Affairs Committee. Member, Executive Nominations Committee; Joint Committee on Administrative, Executive and Legislative Review. Chair, Prince George's County Delegation, 1980-81. *Born in New York, N.Y., October 21, 1926. George Washington University; Pennsylvania College of Optometry, O.D., 1953. Optometrist. Served in U.S. Army, World War II. Member, Task Force to Study the Funding of Special Education, 1985-86; Governor's Commission on Excellence in Higher Education, 1985-87; Chesapeake Bay Trust, 1985—; Maryland Underground Storage Tank Task Force, 1989-91; Southern Regional Education Board (exec. bd. & legislative advisory comm.); Metropolitan Washington Air Quality Committee, 1992—; Governor's Task Force on School Construction, 1992—. Member, 21st Dist. & Vansville Dist. Democratic Clubs. Member, Beltsville Citizens' Assoc.; Beta Sigma Kappa; American Legion; VFW; Prince George's Co. Boys & Girls Clubs; past pres., Takoma-Langley Kiwanis Club. Member, national, State & local optometric assoc.; past pres., Vision Institute of America. Md. Optometrist of the Year, 1967. National Optometrist of the Year, 1968. Member, Beth Torah Congregation. Married. Home: 11107 Montgomery Rd., Beltsville 20705; tel. (301) 937-7411. Annapolis office: 303 James Senate Office Bldg., 21401-1991; tel. (410) 841-3141.*



**C. BERNARD (BERNIE) FOWLER**, Democrat, District 29, Calvert, Anne Arundel & St. Mary's Counties. Member, Senate since 1983; Economic and Environmental Affairs Committee; Executive Nominations Committee; Joint Committee on Legislative Ethics; Special Joint Committee on Pensions. Senate Chair, Joint Committee on Chesapeake Bay Critical Areas; Joint Subcommittee on Program Open Space and Agricultural Land Preservation. *Born in Baltimore, Maryland, March 30, 1924. Graduate of Calvert Sr. High School. U.S. Navy, 1944-46 (Asiatic-Pacific, American Theatre & Victory medals). Businessman. Chair, Patuxent River Commission. Member, Governor's Commission on Special Education; Governor's Task Force on State-Local Fiscal Relationships; Governor's Task Force on Time-Sharing; State Development Council Task Force; State Economic Growth, Resources Protection, and Planning Commission; Tri-County Council for Southern Maryland (chair, natural resources comm.); Chesapeake Bay Commission; Governor's Commission on Growth in the Chesapeake Region; Interdepartmental Task Force on Preservation of State Streams; Maryland Veterans Home Commission. Member, Calvert Co. Bd. of Education, 1963-69 (pres., 4 yrs.). Calvert Co. Commissioner, 1970-82 (pres., 9 yrs.). Prince Frederick Lodge 142; Eastern Star; American Legion; VFW; Elks; Kiwanis; Farm Bureau; Chamber of Commerce; Sportsman Club; Potomac River Assoc.; Watermen's Assoc. Married; four children. District office: P.O. Box 459, Prince Frederick 20678-0459; tel. 1-800-492-8342, (410) 535-3366. Annapolis office: 210 James Senate Office Bldg., 21401-1991; tel. (410) 841-3673.*



**HABERN W. FREEMAN**, Democrat, District 34, Harford County. Member of Senate since 1991. Member, Judicial Proceedings Committee. *Born in Baltimore, Maryland, August 10, 1941. Lock Haven State College, B.S., 1962; University of Maryland, Physical Therapy Certificate, 1964. Physical therapist. Councilman, Harford County Council, 1972-74. President, Harford County Council, 1974-78. Harford County Executive, 1982-86, 1986-90. Member, American Physical Therapy Association; Maryland Physical Therapy Association. Member, Baltimore Blues Society. Married; three children. District office: 2208 Old Emmorton Rd., Suite 102, Bel Air 21015; tel. (410) 638-1714. Annapolis office: 302 James Senate Office Bldg., 21401-1991; tel. (410) 841-3158.*

