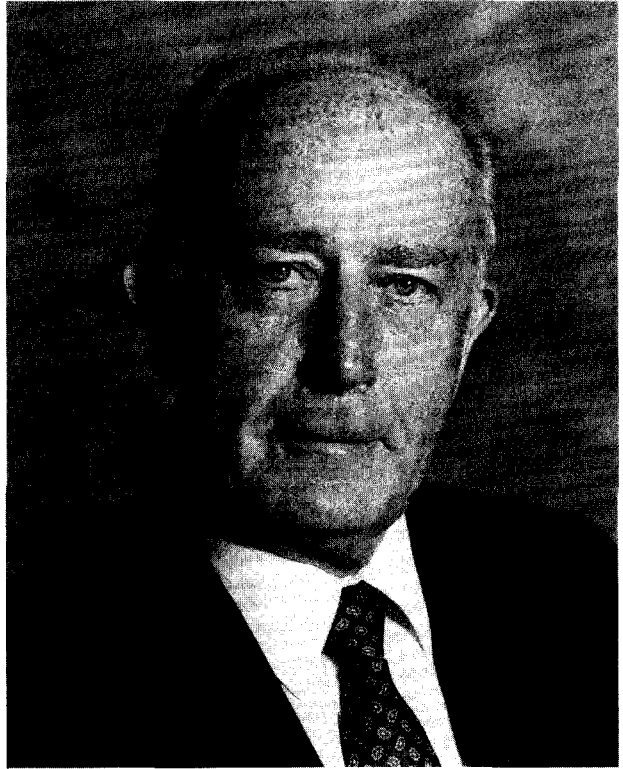

OFFICIAL BIOGRAPHIES

**WILLIAM DONALD
SCHAEFER**

Governor of Maryland



William Donald Schaefer was elected 58th governor of Maryland in 1986 by the greatest margin in State gubernatorial history and was re-elected decisively for a second term in 1990. Governor Schaefer came to the job with more than 30 years of legislative and executive experience, along with a “hands on, heads up” approach to government. A favorite directive to his staff, typical of his swift response to problems, is “Do It Now!”

A “people” proponent, Governor Schaefer brought a fresh view to State government, making the bureaucracy more responsive to individuals. He urged Marylanders to get involved personally in projects ranging from curbing drug abuse to cleaning up the Chesapeake Bay. He expanded social programs from housing to child care, started the nation’s first state outreach effort for AIDS patients, and reorganized executive departments to devote more resources to children, juvenile services and environmental protection. During his first four years, he visited every area of the State, directing aid to local projects and improving schools, roads and utilities. He championed capital projects, including

a new baseball stadium in Baltimore and the State’s first light-rail transit line.

With an eye for business, Mr. Schaefer led eight international trade missions in four years, seeking markets for State products, promoting Maryland as an ideal tourist destination, and strengthening relations throughout Europe, Asia, and the Soviet Union. He challenged State and local governments to work with businesses interested in building in Maryland or expanding existing facilities. The result was new jobs, low unemployment, and trade agreements steering contracts to Maryland companies.

Adamant that Maryland’s youth are the key to the State’s future successes, Mr. Schaefer also overhauled higher education, directing the largest increase of State funding to public and private colleges and universities in Maryland history. Public schools adopted new performance standards in a multi-year plan to upgrade education.

Under Governor Schaefer’s leadership, Maryland aggressively tackled efforts to restore the