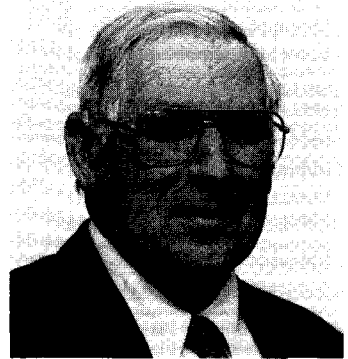

PRINCIPAL EXECUTIVE DEPARTMENTS

The head of each department, except for Education, is the Secretary. Appointed by the Governor (subject to Senate confirmation), the Secretary serves at the Governor's pleasure and is a member of the Governor's cabinet. Each Secretary carries out the Governor's policies regarding the department. The Secretary is responsible for the department's planning, operation, and budget; promulgation of rules and regulations; and appointment of required advisory boards. The State Department of Education is headed by the State Board of Education. The Board appoints to a four-year term the State Superintendent of Schools who directs the Department and executes policy and enforces regulations adopted by the Board.

DEPARTMENT SECRETARIES BIOGRAPHIES

AGRICULTURE

WAYNE A. CAWLEY, JR., Secretary of Agriculture since 1979. Born in Denton, Maryland, October 4, 1923. Washington College, B.A. (economics), 1948; attended the University of Maryland School of Law. Served in the 82nd Airborne Division's 508th Parachute Infantry Regiment in World War II, with combat service in the European Theater. Farmer for over thirty years, currently operating with sons a grain farm on the Eastern Shore. Former vice-president, Denton National Bank, and director of the bank's Farm Department. Past president of Rotary; former vice-president, Caroline County Farm Bureau. Named Caroline County's "Outstanding Farmer" in 1974; named State Administrator of the Year, 1990. Former member, Emergency Management Advisory Council. Member, Governor's Council on the Environment. Member, Chesapeake Bay Critical Area Commission; Board of Regents of the University of Maryland. Past President, Southern Association State Departments of Agriculture. Current President and past Secretary-Treasurer, Southern U.S. Trade Association. Office address: 50 Harry S Truman Parkway, Annapolis, MD 21401.



BUDGET & FISCAL PLANNING

CHARLES L. BENTON, JR., Secretary of Budget and Fiscal Planning since 1987. Born in Baltimore, Maryland, May 20, 1916. University of Maryland, B.A. (business and public administration), 1938; M.A. (economics), 1940. Certified Public Accountant, 1940. Professor of Accounting, University of Maryland, 1940-43. Comptroller, University of Maryland, 1943-46. Director of Finance and Business, University of Maryland, 1946-56. Budget Director, City of Baltimore, 1956-65. Director, Finance Department, City of Baltimore, 1965-86. Fiscal Advisor to the Governor, 1987. Member, Commission on State and County Finance, 1962-65. Past President and Founder, Baltimore City Foundation. Past President, Lexington Market; Baltimore Yacht Basin. Past Trustee, Loan and Guaranty Programs of the City of Baltimore. Past Chairman, Municipal Employees Credit Union; Maryland Credit Union Insurance Corporation. Past Director, Baltimore Economic Development Corporation. Office address: Goldstein Treasury Building, 60 Calvert St., 4th floor, Annapolis, MD 21401.



ECONOMIC & EMPLOYMENT DEVELOPMENT

J. RANDALL EVANS, Secretary of Economic and Employment Development since 1987. Born in Englewood, New Jersey, May 12, 1947. Attended Phillips Academy; Princeton University, B.S. (science and engineering) cum laude, 1969; John F. Kennedy School of Government, Harvard University, M.S. (public policy), 1977. Served in U.S. Navy, Civil Engineer Corps, 1970-75; Mobile Construction Battalion Five, 1970-73; Bureau of Naval Personnel, 1973-75. Director, Land Development Division, Baltimore City Department of Housing and Community Development, 1977-79. Deputy Commissioner, Baltimore City Department of Housing and Community Development, 1979-82. Executive Director, Richmond Renaissance, Richmond, Virginia, 1982-87. Secretary of Economic and Community Development, 1987. Acting Secretary of Housing and Community Development, 1987. Board of Directors, B & O Museum; Christopher Columbus Center. Member, Governor's Commission on Growth in the Chesapeake Region; Maryland Economic Development Corp.; World Trade Center Institute; Maryland Ten Board; Private Sector Advisory Council of the International Cabinet. Member, Preakness Celebration, Inc.; Maryland Center for Quality and Productivity; Johns Hopkins University Real Estate Board. Office address: 217 E. Redwood St., Baltimore, MD 21202.

