

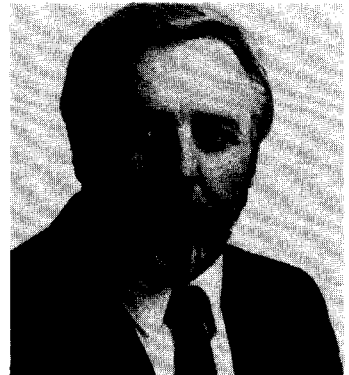
MARY A. CONROY, Democrat, District 23. Born in New York, N.Y., December 25, 1931. Julia Richman High School; Prince George's Community College. Member, Prince George's County Board of License Commissioners, 1984-86. Member, Korean War Memorial Commission. Chair, Prince George's County Affairs Committee, 1986-88 (law enforcement committee). Member, Executive Board, United Cerebral Palsy of Prince George's County. Director, American Cancer Society. Founding member, Bowie Citizens Association. Charter member, Bowie Women's Club. Chair, Subcommittee on Affirmative Action for Women, Democratic National Convention, 1984. Past State Commander, Disabled American Veterans Auxiliary. Past State Adjutant, Disabled American Veterans Auxiliary. Past president, Bowie Chapter, American Association of Retired Persons. Member, Columbian Ladies Guild; Bowie Business and Professional Women's Club; Bowie Democratic Club; Greenbelt Democratic Club. Widow; two children. Member of the Senate, 1982-83. Member of the House of Delegates since May 1986. Member, Ways and Means Committee (developmental disabilities workgroup subcommittee; lottery subcommittee). District office: tel. 262-1044. Annapolis office: 208-C Lowe House Office Bldg., 21401-1991; tel. 858-3098.



NORMAN H. CONWAY, Democrat, District 38. Born in Salisbury, Maryland, January 11, 1942. Wicomico Senior High School; Salisbury State College, B.S. (education), 1965, M.Ed. (education administration), 1970. Teacher, vice-principal, principal, Pinehurst Elementary School, 1965-86. Supervisor, Chapter I programs, Wicomico County Board of Education, 1986-. Member, Democratic Central Committee, Wicomico County, 1970-74. Member, Wicomico County Airport Commission, 1974-85. Member, Salisbury City Council, 1974-87 (president, 1982-87). Member, Wicomico County Recreation Commission, 1985-87. President, Wicomico County Volunteer Firemen's Association, 1986. Vice-President, District no. 1, Maryland Municipal League, 1982-86. Outstanding Young Educator, Salisbury Jaycees, 1970; Sears' Citizen of the Year, 1976; Firefighter of the Year, Veterans of Foreign Wars, 1986. Married. Member of the House of Delegates since 1987. Member, Appropriations Committee. House Chairman, Education Joint Subcommittee. Member, Joint Committee on the Management of Public Funds. Former member, Ways and Means Committee (chairman, subcommittee on pupil transportation; chairman, subcommittee on community colleges). District office: 1312 Whittier Dr., Salisbury 21801; tel. 543-9060. Annapolis office: 416 Lowe House Office Bldg., 21401-1991; tel. 841-3425.



GENE W. COUNIHAN, Democrat, District 15. Born in Cumberland, Maryland, February 6, 1941. Fort Hill High School, Cumberland; Frostburg State College, B.S., 1963; The American University, M.Ed., 1970. Educator; supervisor, Montgomery County Schools. Member, Democratic Central Committee, Montgomery County, 1978-82; president, Montgomery Village/Gaithersburg Democratic Club, 1980-82; president, Montgomery Village Foundation Board of Directors, 1979-80; president, Seneca Valley High School/Community Organization, 1981-82; consultant-trainer, Center for Creative Communications, 1971-74; youth program director, YMCA, 1968-70. Associate professor/instructor (part-time), The American University, University of Maryland, and Federal City College, 1967-73. Married; five daughters. Member of the House of Delegates since 1983. Vice-Chairman, Ways and Means Committee. Member, Joint Budget and Audit Committee; Joint Committee on Administrative, Executive and Legislative Review; Spending Affordability Committee; Special Joint Committee on Energy Pricing. District office: 9901 Dellcastle Rd., Gaithersburg 20879; tel. 977-5045. Annapolis office: 100 Lowe House Office Bldg., 21401-1991; tel. 841-3521.



DAVID R. CRAIG, Republican, District 34. Born in Havre de Grace, Maryland, June 12, 1949. Havre de Grace High School; Towson State University, B.S., 1971; Morgan State University, M.A., 1983. Assistant Principal, Aberdeen Middle School. Member, Havre de Grace City Council, 1979-85. Mayor of Havre de Grace, 1985-89. Life member, Friends of the Concord Point Lighthouse; Havre de Grace Decoy Museum; Susquehanna Museum; Havre de Grace Maritime Museum. Member, Sons of the American Legion, Post 47; Boy Scouts of America Troop 967 (past district chairman, Harford County). Married; three children. Member of the House of Delegates since 1991. Member, Constitutional and Administrative Law Committee. District office: 368 Congress Ave., Havre de Grace 21078. Annapolis office: 326E Lowe House Office Bldg., 21401-1991; tel. 841-3289.

