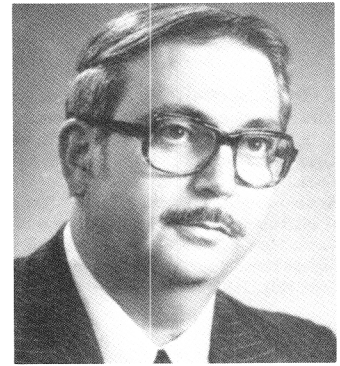


ELLEN R. SAUERBREY, Republican, District 10. Born in Baltimore, September 9, 1937. Towson Senior High School; Western Maryland College, B.A., summa cum laude, 1959. District manager, U.S. Census, 1970. Delegate, Republican National Convention, 1968, 1976, 1984; vice-chairman, Republican Central Committee of Baltimore County, 1966-70. National Secretary and Board of Directors, American Legislative Exchange Council. Trustee, Council on Economic Education. Former State Secretary and member of Board of Directors, Maryland Society for Multiple Sclerosis. Legislative aide, Maryland General Assembly, 1973-78. Selection Panel, Presidential Commission on White House Fellows. Past vice-president, Maryland Federation of Republican Women; past president, Baltimore County Federation of Republican Women. Member, Farm Bureau. HUD Task Force for Affordable Housing. Member, Southern Legislative Conference (consumer protection committee, 1982-84; agriculture and rural development committee, 1985-86). Authored newspaper column, *Congressional Rollcall*. Member, Beta Beta Beta National Biological Honorary Society. Married. Member of the House of Delegates since 1979. Minority Leader, 1987-. Committees: Economic Matters, 1978-86; Ways and Means, 1987-; Joint Budget and Audit. District office: 4122 Sweet Air Rd., Baldwin 21013; tel. 592-2200. Annapolis office: 312 Lowe Bldg., 21401; tel. 841-3401.



PATRICK C. SCANNELLO, Democrat, District 32. Born in Baltimore, August 24, 1936. Edison Vocational/Mergenthaler. Liquor store owner/operator. Served in Maryland National Guard and Army Reserve. Member, Arthur Slade Home School Association; North Glen Improvement Association; Ferndale Community Club; Moose; Holy Trinity Council; Knights of Columbus; Leukemia Society of Baltimore. Board member, Anne Arundel County Economic Opportunities Committee. Married; 4 children. Member of the House of Delegates since 1979. Member, Economic Matters Committee. District office telephone: 768-5678. Annapolis office: 214 Lowe Bldg., 21401; tel. 841-3233.



GEORGE T. SCHMINCKE, Democrat, District 32. Born in Baltimore, December 25, 1923. Mt. St. Joseph High School. Served in U.S. Navy during WW II; received European Ribbon, American Ribbon, Pacific Ribbon with two stars. Anne Arundel County Democratic Committee, 1974-78 (chairman, 3 years). Member, Ferndale Community Club; American Legion; Knights of Columbus; Elks; District 32 Democratic Club; North Glen Democratic Club; Citizens Democratic Club (former president); North Ferndale Community Association, Inc. (former president); Greater Ferndale Community Civic Association. Married; 2 children. Member of the House of Delegates since 1977. Served 6 years on Constitutional and Administrative Law Committee. Present member, Environmental Matters Committee. Annapolis office: 214 Lowe Bldg., 21401; tel. 841-3233.



DAVID B. SHAPIRO, Democrat, District 42. Born in Baltimore, November 13, 1955. Northwestern Sr. High School; University of Maryland Baltimore County, B.A. (economics and accounting), 1976; University of Baltimore School of Law, J.D., 1985. Employed by State Highway Administration; also accountant, business consultant and manager of real estate investments. Member, Governor's Youth Advisory Council, 1973-76. Legal intern, U.S. Bankruptcy Court, 1981. Charter member, National Association of Jewish Legislators, 1977-86. Member, Democratic State Central Committee, 1986-. President, John F. Kennedy Chapter of B'nai B'rith Youth Organization, 1973. Member, board of directors, Baltimore Jewish Community Center, 1973-74, 1976; board of directors, Jewish Big Brother League of Baltimore, 1975. Founder and director, Project Bernfes, 1975-86. Member, Baltimore Junior Chamber of Commerce, 1979-86; speaker, Annual Israel Bond Appeal, 1979-86. Member of the House of Delegates, 1977-83, and since 1987. Member, Judiciary Committee. District office: 6609 Reisterstown Rd., Baltimore 21215; tel. 358-5055. Annapolis office: 320-C Lowe Bldg., 21401; tel. 841-3297.

