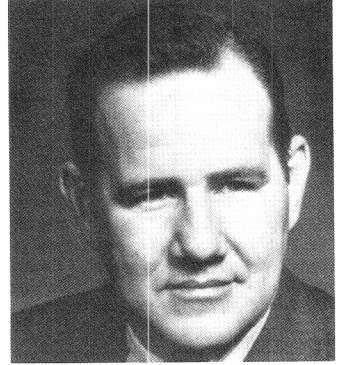
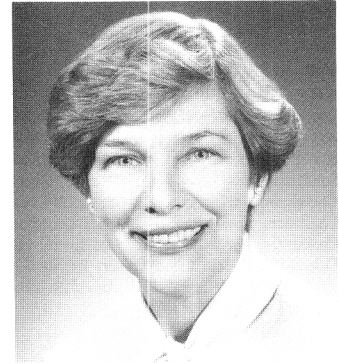


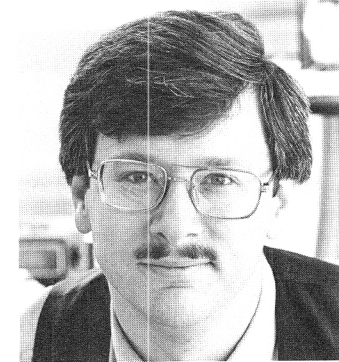
DONALD B. ROBERTSON, Democrat, District 18. Born in Washington, D.C., October 6, 1931. Oberlin College, B.A., 1953; Columbia University School of Law, LL.B., 1958. U.S. Naval officer, 1953-55. Attorney. Member of the bar: Maryland, D.C., and U.S. Supreme Court. Served on Governor's Commission to Study the Public Service Commission; Joint Committee on State Tax Structure; Ethics Committee, Maryland Democratic Party; Ethics, Elections and Reapportionment Committee, National Conference of State Legislatures; Chevy Chase Public Library Advisory Committee; Oberlin College Alumni Committee on Admissions. Past chairman, Committee on Rules, Legislative Study Group, and vice-chairman, Citizens' Committee of Chevy Chase, Section III. Co-author, "Recent Developments in Natural Gas Regulation by the FPC." Married; 4 children. Member of House of Delegates since 1971. Speaker Pro Tem, 1987-. Majority Leader, 1979-87. Committees: Judiciary, 1971-73; Ways and Means, 1975-76; Constitutional and Administrative Law, 1974, 1977-. Chairman, Montgomery County Delegation, 1971-78. Member, Rules and Executive Nominations Committee, 1979-(vice-chairman, 1979-87); Legislative Policy Committee, 1979-(legislative management subcommittee, 1979-87); Spending Affordability Committee, 1982-87. District office: 7003 Delaware St., Chevy Chase 20815; tel. (202) 785-2081. Annapolis office: 313 Lowe Bldg., 21401; tel. 841-3391, Washington Metro area 858-3391.



JEAN W. ROESSER, Republican, District 15. Born in Washington, D.C., May 8, 1930. Sacred Heart Academy, Washington, D.C.; Trinity College, B.A., 1951; Catholic University, graduate study (economics). Former newspaper reporter, *Suburban Record*, covering Montgomery County Council. Member, Stephanie Roper (victims' assistance) Committee. Member, Appalachian Trails Advisory Council, appointed by Secretary of the Interior. Former officer, Maryland Federation of Republican Women. Past president, Montgomery County Federation of Republican Women; Potomac Women's Republican Club. Founding member, Montgomery County Arts Council. Member, West Montgomery and Germantown Citizens Associations. Member, Gaithersburg and Upper Montgomery, Potomac and Germantown Chambers of Commerce. Member, Safe Alternatives for the Future Environment (SAFE). Former Congressional liaison assistant, U.S. Information Agency. Married; 3 children. Member of the House of Delegates since 1987. Member, Constitutional and Administrative Law Committee; Special Committee on Drug and Alcohol Abuse. District office: 10830 Fox Hunt Lane, Potomac 20854; tel. 299-9105. Annapolis office: 220 Lowe Bldg., 21401; tel. 858-3090, 841-3090.



JAMES C. ROSAPEPE, Democrat, District 21. Born in Rome, Italy, May 20, 1951. Business owner. Member, Advisory Council to Maryland Committee on Federal Income Tax Conformity, 1982. Member, Maryland Democratic State Central Committee, 1982-86. Chair, College Park Economic Development Committee, 1983-86. Co-Chair, Small Business Subcommittee, Prince George's Economic Development Advisory Committee, 1985-86. Treasurer, Prince George's Democratic Committee, 1985-86. Treasurer, Maryland Democratic Party, 1985-. Member, board of directors, National Small Business United; Antonio Gatto Lodge, Order Sons of Italy; advisory board, Center for National Policy; American Council of Young Political Leaders; National Italian-American Foundation Council of 1000. President, Maryland Main Street Development Association, 1984-85. Member, Prince George's Chamber of Commerce; Friends of Agricultural Research, Beltsville; National Tax Association. Married. Member of the House of Delegates since 1987. Member, Ways and Means Committee. District office: 8403 Patuxent Ave., College Park 20740; tel. 441-8690. Annapolis office: 210 Lowe Bldg., 21401; tel. 858-3114, 841-3114.



SAMUEL I. (SANDY) ROSENBERG, Democrat, District 42. Born in Baltimore, May 18, 1950. Graduated Baltimore City College, 1968; Amherst College, B.A., 1972; Columbia University Law School, J.D., 1975. Housing program coordinator, Baltimore City Department of Housing and Community Development, 1975-76, 1979-81. "Square Off" producer and assistant to program manager, WJZ-TV, 1976-79; legislative assistant on Capitol Hill. Member, Mayor's Task Force for Liaison with the General Assembly, 1980-81. Member, State Commission on Hereditary Disorders, 1983-. Past board member, Citizens Planning and Housing Association; Baltimore Jewish Community Relations Council. Past member, Maryland Advisory Committee, U.S. Civil Rights Commission. Baltimore Alumni Admission Coordinator, Amherst College. Member, New Democratic Coalition; Westside, Hampden and Dolfield Democratic Clubs; ACLU; Common Cause; Har Sinai Congregation. Unmarried. Member of the House of Delegates since 1983. Member, Appropriations Committee (vice-chairman, subcommittee on capital budget); Joint Budget and Audit Committee. District office: 6609 Reisterstown Rd., Baltimore 21215; tel. 764-3614. Annapolis office: 320 Lowe Bldg., 21401; tel. 841-3297.

