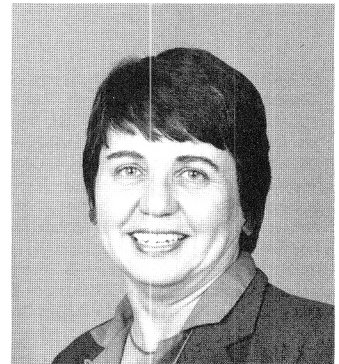


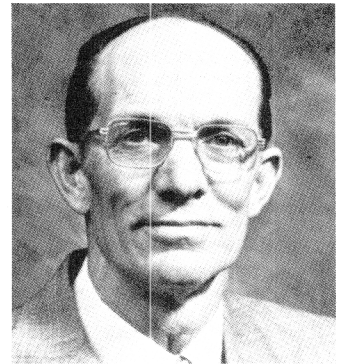
**MARSHA G. PERRY**, Democrat, District 33. Born in Niagara Falls, New York, December 9, 1936. Niagara Falls High School; Elmira College; Cornell University, B.S. (industrial and labor relations, and secondary education), 1959. Member, Controlled Hazardous Substance Advisory Council. Legislative aide to Delegate Lighthizer. Member, Anne Arundel County Transportation Commission Utility Oversight Committee; Anne Arundel County Patuxent Wastewater Reclamation Advisory Committee; Anne Arundel County Task Force on Quality Assurance Agreements; Anne Arundel County Planning and Zoning Transition Team. Member, Crofton Civic Association (vice-president; director of planning and zoning; director, District II); Georgetown Regime 2. President, Youth Counselor Advisory Committee. Member, District 33 Democratic Club; Odenton Improvement Association; Patuxent Improvement Association. President, West County Federation of Civic Associations. Skating director, City of Bowie Ice Arena and Benfield Pines Ice Rink, Millersville. Power skating coach, Washington Capitals Youth Hockey. Member, St. Elizabeth Ann Seton Church. Citizen of the Year, Crofton, 1986. Married; 3 children. Member of the House of Delegates since 1987. Member, Constitutional and Administrative Law Committee. District office: 1605 Edgerton Place, Crofton 21114; tel. 721-7034. Annapolis office: 215 Lowe Bldg., 21401; tel. 841-3223, 858-3223.



**CAROL STOKER PETZOLD**, Democrat, District 19. Born in St. Louis, Missouri. Central High School, Memphis, Tennessee; Valparaiso University, B.S., 1959. Member, State Scholarship Board, 1978-87 (chairman, 1985-87). Montgomery County co-chair, International Year of the Child, 1979. Member, Montgomery County Commission for Children and Youth, 1979-84; State Advisory Committee for Children and Youth, 1979-84. Member, Montgomery County Commission on Councilmanic Redistricting, 1982; Montgomery County Council Task Force on Newly Employed, 1983. President, Kensington Day Care Council, 1970-74; Kensington Branch, American Association of University Women, 1977-79. Member, board of directors, Lutheran Social Services, 1980-86; United Way Council, 1981-; board of directors, Aspen Hill Civic Association, 1985-. AAUW Name Grant Honoree, 1971, 1981, and Outstanding Member Award, 1979; U.S. Dept. of Health, Education and Welfare Recognition of Outstanding Commitment to Children, 1980. Married; 3 children. Member of the House of Delegates since 1987. Member, Constitutional and Administrative Law Committee. District office: 14113 Chadwick Lane, Rockville 20853; tel. 871-7413. Annapolis office: 225-A Lowe Bldg., 21401; tel. 858-3090, 841-3090.



**MARK O. PILCHARD**, Democrat, District 38. Born in Pocomoke City, March 20, 1924. Graduate of Stockton High School. Farmer and hybrid corn agent. Member, Governor's Task Force on Time-Sharing. County Commissioner at large, Worcester County, 1966-78 (president of Board, 1974-78). Past director, Maryland Pork Producers, Inc.; Crescent Lodge AF & AM of Pocomoke, 32 degree Mason; Shriner; past president and life member, Pocomoke City Jaycees; past vice-president, Maryland Junior Chamber of Commerce. Past director, Voters, Inc.; past member, Shad Landing Recreational Committee; past president, Delmarva Advisory Council; former member, Board of Directors, Maryland Association of Counties; former member, Legislative Committee, Maryland Association of Counties; member, Delmarva Water Transport Committee; member, Nassawango Country Club. Married; 2 children. Member of the House of Delegates, 1959-66, and since 1979. Member, Appropriations Committee (subcommittee on pensions); Special Committee on Drug and Alcohol Abuse. Chairman, Eastern Shore Delegation. District office: "Shimar," R.F.D. 3, Box 100, Pocomoke City 21851; tel. 632-0473. Annapolis office: 413 Lowe Bldg., 21401; tel. 841-3431.



**PAUL G. PINSKY**, Democrat, District 22. Born in Camden, New Jersey, March 5, 1950. Moorestown Friends School, Moorestown, N.J.; George Washington University, B.A. (public affairs), 1972, M.A. (education), 1978. Taught history for 8 years in Prince George's County. President, Prince George's County Educators' Association (1983-87), which represents over 6,000 professional school employees. Member, executive board, Maryland Citizens Action Coalition. Member, Washington Area Labor Committee on Central America and the Caribbean. Recipient "Outstanding Contribution to Youth" from Prince George's County Council of PTAs; on behalf of Prince George's County Educators Association, "Outstanding Contribution to the Community" from National Conference of Christians and Jews, Prince George's Chapter. Married. Member of the House of Delegates since 1987. Member, Environmental Matters Committee. District office: 6205 Inwood St., Cheverly 20785; tel. 341-9655. Annapolis office: 207-A Lowe Bldg., 21401; tel. 858-3058, 841-3058.

