

GENERAL HIGHWAY MAP

WICOMICO COUNTY MARYLAND

PREPARED BY T. J. E.

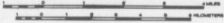
DEPARTMENT OF TRANSPORTATION
STATE HIGHWAY ADMINISTRATION

IN COOPERATION WITH THE
U.S. DEPARTMENT OF TRANSPORTATION
FEDERAL HIGHWAY ADMINISTRATION

DISTRICT OVERLAY PREPARED BY THE
MARYLAND DEPARTMENT OF STATE PLANNING

MAP SCALE

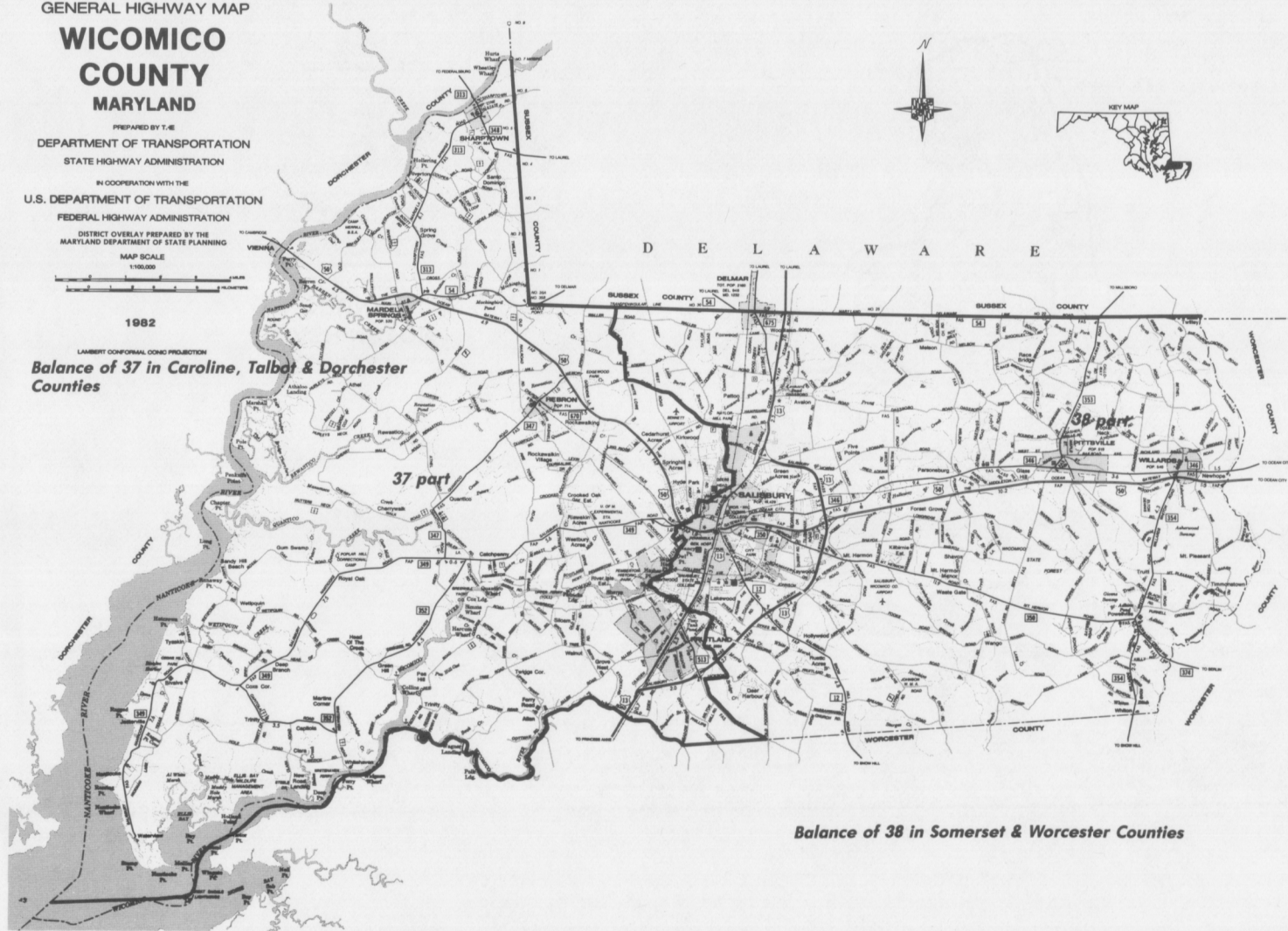
1 INCH = 1 MILE



1982

LAMBERT CONFORMAL CONIC PROJECTION

*Balance of 37 in Caroline, Talbot & Dorchester
Counties*



Balance of 38 in Somerset & Worcester Counties