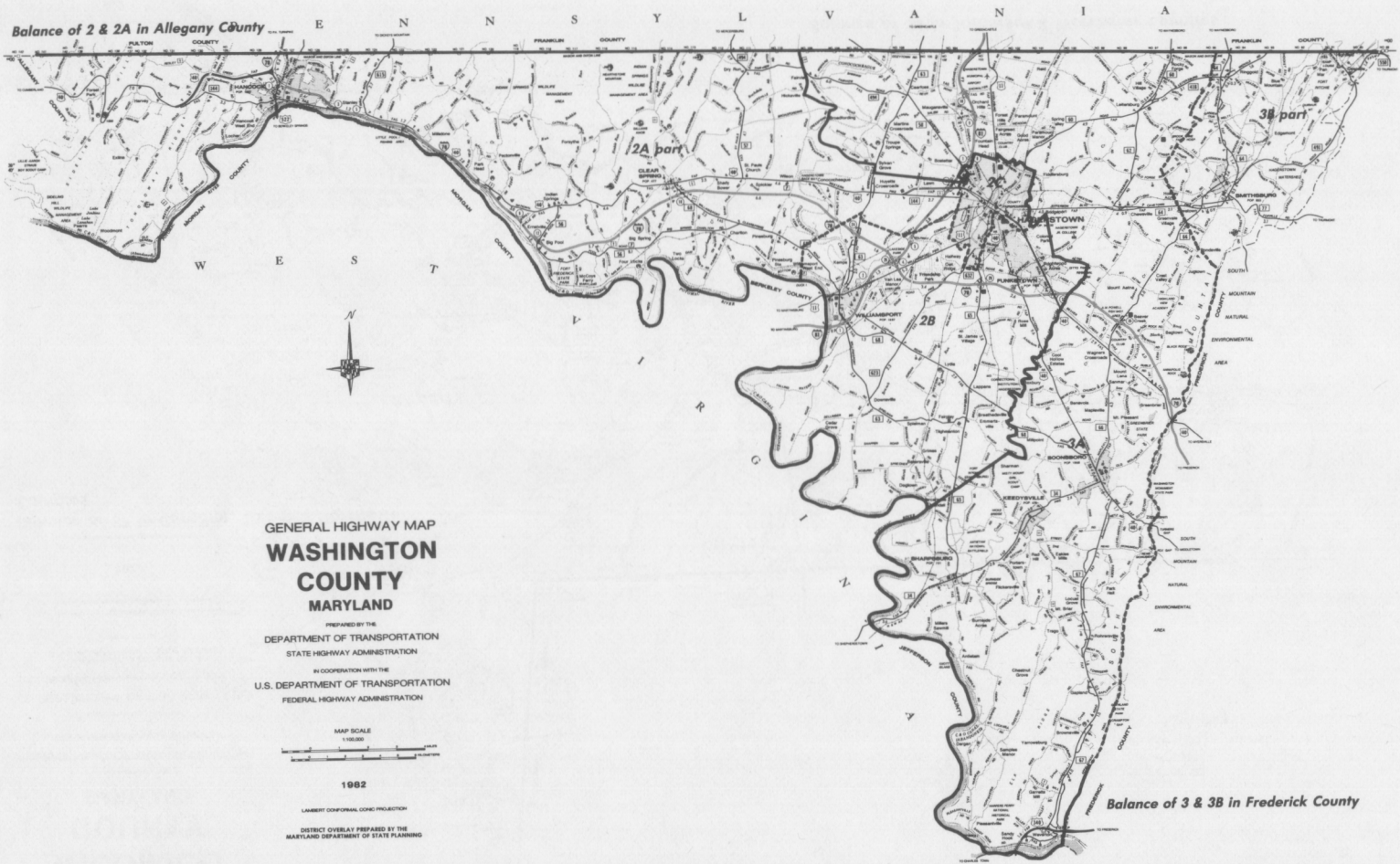
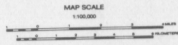


Balance of 2 & 2A in Allegany County



GENERAL HIGHWAY MAP
WASHINGTON COUNTY
MARYLAND

PREPARED BY THE
DEPARTMENT OF TRANSPORTATION
STATE HIGHWAY ADMINISTRATION
IN COOPERATION WITH THE
U.S. DEPARTMENT OF TRANSPORTATION
FEDERAL HIGHWAY ADMINISTRATION



1982

LAMBERT CONFORMAL CONIC PROJECTION
DISTRICT OVERLAY PREPARED BY THE
MARYLAND DEPARTMENT OF STATE PLANNING

Balance of 3 & 3B in Frederick County