

CIRCUIT COURT

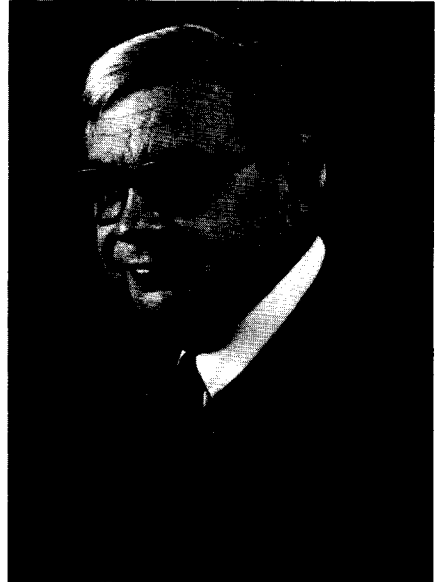
BIOGRAPHIES OF MEMBERS

ERNEST A. LOVELESS, JR. Seventh Judicial Circuit, 1960—; Chief Judge and Circuit Administrative Judge; Chairman, Conference of Circuit Judges, 1980—. Born in Washington, D.C., November 29, 1922. Attended Surrattsville High School; University of Maryland, B.A., 1943; George Washington University Law School, LL.B., J.D., 1947; LL.M., 1948. Admitted to the Maryland Bar, 1948. Served in the U.S. Navy. Member, American, Maryland State, and Prince George's County Bar Associations; American Judicature Society; National Council for Crime and Delinquency. Chairman, Maryland Judicial Conference, 1975–1976; former chairman, Maryland Judicial Conference Committee on Juvenile Courts in Maryland; former chairman, District Advisory Board for the Public Defender System. Maryland House of Delegates, 1954–1960. Former member, Metropolitan Area Council of Juvenile Court Judges; attorney, Board of License Commissioners for Prince George's County, 1947–1954. Past president, Clinton Lions Club; past president, Surrattsville P.T.A.; past president, Southern Prince George's County Board of Trade; member, VFW; American Legion; Clinton Lions Club. Married; 4 children.

ARTHUR M. AHALT. Seventh Judicial Circuit, 1982—. Born in Washington, D.C., April 27, 1942. Attended Northwestern High School; University of Maryland, B.S., 1964; American University Law School, J.D., 1967. Admitted to the Maryland Bar, 1967. Member, American, Maryland State, and Prince George's County Bar Associations; Maryland Trial Lawyers Association, Inc.; District Advisory Board for Public Defender System. Recipient, Distinguished Service Award, Maryland State Bar Association; Outstanding Service Award, Citizens Advisory Committee to the Pilot Law Related Education Project for the Schools of Maryland. Author of Domestic Relations Section of Maryland Law Practice Manual and *Law Related Education—A Ten Year Experience*. President, Prince George's County Bar Association; member, Board of Governors, Maryland State Bar Association; American Bar Association House of Delegates; Prince George's County Chamber of Commerce. Married; 3 children.

MILTON B. ALLEN. Eighth Judicial Circuit, 1976—. Born in Baltimore, December 10, 1917. Attended Baltimore public schools; Coppin State, teacher's certificate, 1938; University of Maryland, LL.B., 1949. Admitted to the Maryland Bar, 1948. Member, Maryland State, Baltimore City, and Monumental City Bar Associations; National District Attorneys Association; Maryland State's Attorneys Association. Honorary member, Order of the Coif, University of Maryland School of Law; numerous distinguished service awards and citations. Married; 3 children.

EDWARD J. ANGELETTI. Eighth Judicial Circuit, 1983—. Born in Pittsburgh, Pennsylvania, January 26, 1937. University of Maryland, B.A., 1962; University of Maryland School of Law, LL.B./J.D., 1963. Admitted to the Maryland Bar, 1963. Member, American, Maryland State, and Baltimore City Bar Associations; American Judicature Society. Served in the U.S. Army, 1955–1957. Assistant state's attorney, Baltimore City, 1963–1967;



assistant public defender, Baltimore City, 1971–1979. Judge, District Court for Baltimore City, 1981–1983. Member, Archdiocesan Pastoral Council, Baltimore; Order of the Sons of Italy in America, Maryland State Lodge; NAACP (life member). Married; 3 children.

MARY ARABIAN. Eighth Judicial Circuit, 1974—. Attended Baltimore City public schools; University of Maryland, College Park; University of Maryland School of Law. Admitted to the Maryland Bar, 1945. Member, Maryland State, Baltimore, and Women's Bar Associations. Assistant city solicitor, Baltimore City, 1959; assistant attorney general of Maryland, 1959–1961; judge, Municipal Court of Baltimore City, 1961–1970; judge, District Court of Maryland, 1970–1974. Woman of the Year, Hebrew Noble Ladies, 1961; Woman of the Year, Maryland Federation of Business and Professional Women's Clubs, 1963; Americanism Award, Daughters of the American Revolution, 1975. President, Alumni Association of the University of Maryland School of Law, 1959–1960; Board of Regents, University of Maryland, 1966–1967.

SAMUEL W. BARRICK. Sixth Judicial Circuit, 1969—, Chief Judge. Born in Woodsboro, September 27, 1924. Attended Frederick High School; Mercersburg Academy; Gettysburg College, B.A., 1948; University of Maryland School of Law, LL.B., 1952. Served as Navigational Officer with Eighth Air Force during WW II. Admitted to the Maryland Bar, 1952. Elected and served as State's Attorney, 1954–1958, and State Senator, 1958–1962. Served as County Attorney, 1963–1969. Delegate, Maryland Constitutional Convention, 1967. Delegate, Democratic National Convention, 1968. President, S. W. Barrick & Sons, Inc., Woodsboro, Maryland. Member, American and Frederick County Bar Associations. Past member of the boards of directors of many Frederick County civic organizations. Member, Evangelical Lutheran Church and past vice-president of the church council. Married; 3 children.