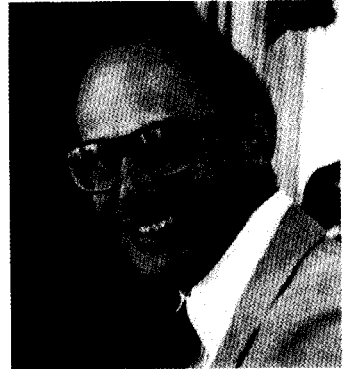


**EDWARD J. KASEMEYER**, Democrat, District 14B. Born in Baltimore, July 18, 1945. Attended Howard County Senior High; Western Maryland College, B.A., 1967. Employed in real estate. Member, Howard County Democratic State Central Committee, 1978-1982; Howard County Financial Disclosure Commission, 1980-1982. Member, Ellicott City Kiwanis Club; Columbia Rotary Club; Howard County Farm Bureau; Howard County Board of Realtors; First, Second and Fifth District Democratic Clubs; Columbia Democratic Club. Board of Directors, Greater Howard County Chamber of Commerce, 1976-1982 (president, 1980). Listed in *Who's Who in American Colleges and Universities*. Married; 4 children. Member of the House of Delegates since 1983; member, Economic Matters Committee. Chairman, Subcommittee on Health Insurance. Member, Subcommittee on Savings and Loan Associations; Subcommittee on Clipping. Annapolis office: 226 Lowe Bldg., 21401; tel. 841-3200.



**THOMAS B. KERNAN**, Democrat, District 9. Born in Baltimore, May 12, 1948. Attended Baltimore County parochial schools; Baltimore City public schools; University of Maryland, B.A. President of Harbour Group Corporation (independent insurance agency). Married. Member of the House of Delegates since 1975. Speaker Pro Tem, 1982—. Assistant Majority Leader, 1979-1982. Member, Constitutional and Administrative Law Committee, 1975-1976; Ways and Means Committee, 1977—; Rules and Executive Nominations Committee; Legislative Policy Committee. Chairperson, Special Joint Oversight Committee on Economic and Community Development, 1984. Annapolis office: 426 Lowe Bldg., 21401; tel. 841-3458.



**DIANE KIRCHENBAUER**, Democrat, District 20. Born in Baltimore, Maryland. Attended Anne Arundel County public schools; University of Maryland, B.A. in Political Science (Economics minor). Congressional and State legislative staff member; legislative representative, Maryland National Organization for Women. Chosen one of the Outstanding Young Women of America, 1979. Appointed by Governor Hughes to the Judicial Nominating Commission, Sixth Circuit. Member, Governor's Task Force on Food and Nutrition. Board member, Alliance for Democratic Reform; Woman's Suburban Democratic Club. Member, Flower-Piney Branch Local Development Corporation; League of Women Voters, Woodmoor-Pinecrest Citizens Association. First V.P., American Association of University Women, Silver Spring. Steering Committee, Coalition for Excellence and Equality in Education. Married. Member of the House of Delegates since 1983; member, Economic Matters Committee (member, Health Insurance Subcommittee). Co-chair, House/Senate Joint Subcommittee to Study the Savings and Loan Industry, 1984. District office: 10414 Lorain Avenue, Silver Spring 20901; tel. 681-8090. Annapolis office: 225 Lowe Bldg., 21401; tel. 841-3090, Washington area tel. 858-3090.



**RUTH M. KIRK**, Democrat, District 39. Born in Baltimore, February 2, 1930. Educated in Baltimore public schools. Teacher's aide. Member, Baltimore Blueprint; National Citizens Participation Council; COIL (Community Organization to Improve Life); Self Help Housing Board; Urban Service Commission; Urban Service Advisory Council; Urban Services Center 19; Poppleton PAC (Urban Renewal Planning Action Council); University of Maryland Medical Systems Advisory Board; Committee for Cultural Arts; Greater Model Community Council; Citizens Democratic Action Organization. Member, Board of Directors, Meals on Wheels. Member, Eastern Star; Morning Star Baptist Church. Received Baltimore Best Silver and Blue Award, 1982; Frances Morton Froelicher Civic Statesmanship Award, 1982; Golden Brick Award, Baltimore Blueprint; highest hour service in District 8 (1,929 hours). Married; 6 children. Member of the House of Delegates since 1983; member, Constitutional and Administrative Law Committee. District office: 320 N. Carey St., Baltimore 21223; tel. 383-1622. Annapolis office: 315 Lowe Bldg., 21401; tel. 841-3263.

