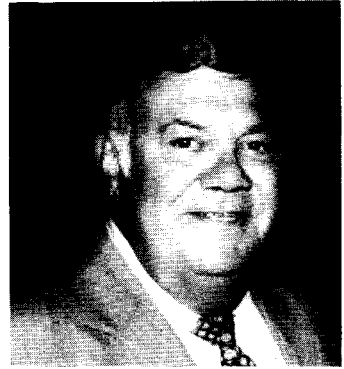


JEROME F. CONNELL, SR., Democrat, District 31. Born in Baltimore, October 17, 1927. Attended Baltimore parochial and public schools; University of Baltimore School of Law, LL.B., 1958. Admitted to the Maryland Bar, 1958. Served in the U.S. Army, 1946-1953. Trial Magistrate, Anne Arundel County, 1959-1960, 1962-1964. Assistant County Solicitor, Anne Arundel County, 1961-1962. Member, Lake Shore, Roland Terrace, and Stoney Creek Democratic Clubs; Trial Judges Association of Maryland; Heusler Honor Society; Elks; Board of Directors, Big Brothers. Named Big Brother of the Year, 1966. Married. Member of the House of Delegates, 1967-1971. Member of the Senate since 1975. Chairman, Economic Affairs Committee. District office: 5 Central Ave., Glen Burnie 21061; tel. 761-2430. Annapolis office: 201 James Bldg., 21401; tel. 841-3658.



JOHN CARROLL COOLAHAN, Democrat, District 12. Born in Baltimore, October 29, 1932. Attended Mt. Saint Joseph; Western Maryland College, B.A., 1958; University of Baltimore Law School, LL.B., 1967, J.D. Attorney. Member of the Maryland Bar since 1972. Served in U.S. Marine Corps, sergeant, 1951-1954; awarded purple heart, good conduct medal, Korean Service citation. Member. English Counsul Democratic Club; Consolidated Democratic Club; Woodlawn Democratic Club; Ridgeway Democratic Club. Member, Arbutus Social Club; Knights of Columbus; V.F.W.; legislative committee of the American Legion. Married; 5 children. Member. House of Delegates, 1967-1970. Member, State Senate, 1971-1978 (chairman, Baltimore County delegation, 1973, 1975). Member of the Senate since 1983. District office: 1330 Sulphur Springs Rd., Baltimore 21227; tel. 242-5699. Annapolis office: 205 James Bldg., 21401; tel. 841-3653.



VICTOR CUSHWA, Democrat, District 2. Born in Hagerstown, October 22, 1924. Attended Duke University; Harvard University; Georgetown University, B.S., 1948. Served in the U.S. Navy, WW II, Destroyers with Pacific Fleet. Past president, Young Democrats, Washington County. Member, Lions; American Legion; Potomac Fish and Game Club. Home: "Cloverton," Williamsport, Md. Wife, Patricia; son, Victor Matthew. Member of the Senate since 1977. Constitutional and Public Law Committee, 1978; Economic Affairs Committee 1979-1982. Vice-chairman, Constitutional and Public Law Committee, 1983-; Executive Nominations Committee, 1983-. District office: Grice Building, P.O. Box 608, Hagerstown 21740; tel. 791-2900. Annapolis office: 309 James Bldg., 21401; tel. 841-3609.



GEORGE W. DELLA, JR., Democrat, District 47. Born in Baltimore, June 5, 1943. Gilman School; Southern High School; University of Baltimore; University of Baltimore School of Law, J.D., 1972. Maryland National Guard, 1965-1971. Member, Baltimore City Hospital Nursing Home Study Commission, appointed 1976; Baltimore City Council, 1976-1983 (chairman, Budget and Finance Committee, 1979-1983); Workmen's Compensation Study Committee; Mayor's Insurance Study Committee. Member, Corinthian Lodge No. 93, A.F. & A.M.; Druid R.A. Chapter No. 28; Monumental Commanders No. 3, Knights Templar; Hiram Council No. 5, R. & S.M.; Boumi Tempel A.A.O.N.M.S.; Stonewall, 19th Ward, and Baybrook Democratic Clubs. Married. Member of Senate since 1983. Member, Economic Affairs Committee. District office: 403 E. Hamburg St., Baltimore 21230; tel. 332-0455. Annapolis office: 310 James Bldg., 21401; tel. 841-3600.

