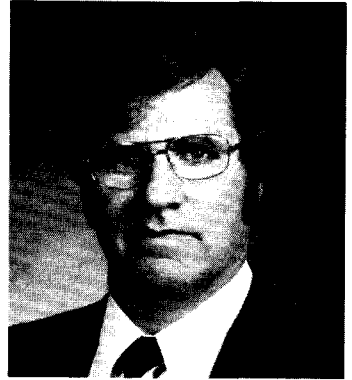


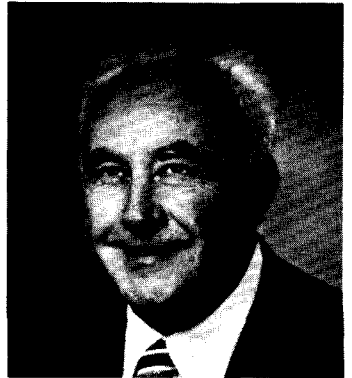
LAURENCE LEVITAN, Democrat, District 15. Born in Washington, D.C., October 22, 1933. Attended Washington, D.C., public schools; Washington and Lee University, B.S., 1955; George Washington Law School, J.D., 1958. Admitted to Maryland Bar, 1964. Past officer and director, Regency Estates Citizens Association and Regency Estates Swim Club; past president and trustee, Georgetown Hill Elementary School PTA. Officer and director, Montgomery County Heart Association. Member, Montgomery County Financial Advisory Committee, 1968 - 1970. Chairman, Joint Committee on Management of Public Funds. Member, Governor's Commission to Study Unification of the Circuit Court; Governor's Commission to Study School Construction Programs; Tax Assessments Study Task Force Committee; Fiscal Affairs Committee, Southern Legislative Conference; Special Committee to Finance Agricultural Land Preservation; Joint Legislative Committee on Port of Baltimore. Married. Member of the House of Delegates, 1971 - 1974. Member of the Senate since 1975. Chairman, Budget and Taxation Committee since 1979. District office: 11426 Georgetown Dr., Potomac 20854; tel. 656-0915. Annapolis office: 100 James Bldg., 21401; tel. 269-3542.



JOSEPH J. LONG, SR., Democrat, District 36. Born in Delmar, July 19, 1921. Attended public schools in Salisbury and Delmar; Paynter Business School. Electrician. Served with the U.S. Air Force, 1942 - 1946. Former member, Salisbury City Council. Member, Governor's Commission to Study Public Employee Labor Relations; Governor's Commission to Study the Revision of the Child Labor Laws; Governor's Advisory Committee on Elevators. Vice-chairman, Joint Committee to Review the Unemployment Insurance Laws; Joint Committee to Study the State Economy. President, Young Democratic Club of Wicomico County, 1960 - 1961. Member, Salisbury Democratic Committee. Member, International Association of Electrical Inspectors; Farm Bureau; Moose; American Legion. Married. Member of the House of Delegates since 1963. Chairman, Wicomico County Delegation since 1967. Chairman, Subcommittee on Labor and Management of Economic Matters Committee since 1968. Chairman, Joint Governor's Commission on Study of Mobile Homes, 1976 to present. District office: 730 S. Park Drive, Salisbury 21801; tel. 742-9032. Annapolis office: 206 James Bldg. 21401; tel. 269-3619.



FREDERICK C. MALKUS, JR., Democrat, District 35. Born in Baltimore, July 1, 1913. Attended Dorchester County public schools; Western Maryland College, A.B., 1934; University of Maryland School of Law, LL.B., 1938. Served with U.S. Army during World War II. Trustee, Western Maryland College. Married. Member of House of Delegates, 1947 - 1951. Member of the Senate since 1951. Chairman of the Committee on Judicial Proceedings, 1955 - 1966. Member of Legislative Council (now Legislative Policy Committee) since 1955. President Pro Tem since 1975. District office: 500 Spring St., P.O. Box 316, Cambridge 21613; tel. 228-7230. Annapolis office: Pres. Wing, James Bldg., 21401; tel. 269-3328.



EDWARD J. MASON, Republican, District 1. Born in Cumberland, June 12, 1930. Attended Cumberland parochial schools; University of Maryland; Strayer's Business College, certificate, 1951. Restaurant proprietor. Served in the U.S. Air Force, 1949 - 1955. Chairman, Republican State Central Committee of Allegany County, 1969 - 1970. Member, board of directors, Allegany County Economic Development Corporation. Vice-president, Maryland Federation of Young Republicans. President, Allegany County Young Republicans. Member, National Restaurant Association. Member, board of directors, Western Maryland Chamber of Commerce; Route 40 Association. Outstanding Young Republican in Maryland, 1968. Outstanding Young Republican in Allegany County, 1967 - 1968. Married. Member of the Senate since 1971. Minority Leader since 1974. Member, Legislative Policy Committee. District office: Rt. 2, Box 102-A, Cumberland 21502; tel. 777-2168. Annapolis office: 407 James Bldg., 21401; tel. 269-3039.

