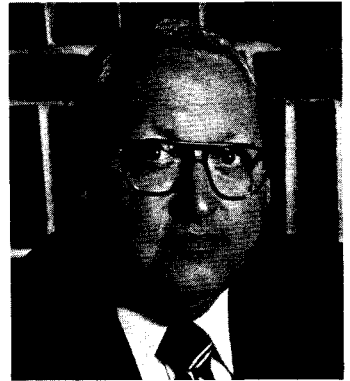


WILLIAM M. LINTON, Republican, District 10; born in Baltimore, February 17, 1928. Attended Baltimore County public schools; University of Baltimore; Mt. Vernon School of Law, LL.B., 1964. Executive vice president, Maryland State Fair and Agricultural Society, Inc. Served in the U.S. Navy. Chairman, Board of Recreation and Parks, Baltimore County, 1970. Member, State Planning and Advisory Council for Developmental Disabilities. Director, Lutheran Social Services. Honorary life member, Maryland Congress of Parents and Teachers. Married. Member of the House of Delegates since 1971. Minority Leader since 1974. Member, Legislative Policy Committee.



JOSEPH J. LONG, SR., Democrat, District 36; born in Delmar, July 19, 1921. Attended public schools of Salisbury and Delmar; Paynter Business School. Electrician. Served with the U.S. Air Force, 1942-46. Former member, Salisbury City Council. Member, Governor's Commission to Study Public Employee Labor Relations; Governor's Commission to Study the Revision of the Child Labor Laws; Governor's Advisory Committee on Elevators. Vice chairman, Joint Committee to Review the Unemployment Insurance Laws; Joint Committee to Study the State Economy. President, Young Democratic Club of Wicomico County, 1960-61. Member, Salisbury Democratic Committee. Member, International Association of Electrical Inspectors; Farm Bureau; Moose; American Legion. Married. Member of the House of Delegates since 1963. Chairman, Wicomico County Delegation since 1967. Chairman, Subcommittee of Labor and Management of Economic Matters Committee since 1968.



ROBERT CHARLES BIGGY LONG, Democrat, District 36; born in Crisfield, May 15, 1919. Attended Somerset County public schools; Valley Forge Military Academy, Wayne, Pa.; Beacom Business College. Farmer and canner. Served in the U.S. Navy, 1942-45. President, Board of County Commissioners, Somerset County, 1954-58, 1966-70, and member, 1970-74. Member, Farm Bureau. Charter member and past president, Lions Club. Member, Elks; American Legion; Veterans of Foreign Wars. Married. Member of the House of Delegates, 1959-66, and since 1975.



WILLIAM R. McCAFFREY, Democrat, District 28; born in Washington, D.C., July 28, 1934. Attended Washington, D.C., public schools; Southeastern University; Pennsylvania State University. Telephone company foreman, sportscaster and sports columnist. Served in the U.S. Navy Reserve, 1952-56. Member, Brandywine Democratic Club; Ft. Washington Democratic Club; Surratts Democratic Club; Clinton United Methodist Church Men's Club; Gwynn Park Senior High School P.T.S.A.; Brandywine Elementary School P.T.A. Member, Elks; Moose; American Legion; Maryland-Delaware Press Association. Professional Basketball Writers Association of America. Received Lions Club Presidential Appreciation Award; Lackey High School Citizenship Award; Greater Waldorf Jaycees Appreciation Award. Married. Member of the House of Delegates since 1975.

