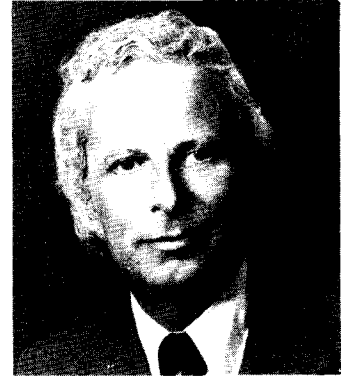


RAYMOND E. BECK, Republican, District 4B; born in Baltimore, March 5, 1939. Attended Baltimore City and Baltimore County public schools; University of Baltimore, LL.B., and J.D., 1967. Admitted to the Maryland Bar, 1967. Served in the U.S. Marine Corps, 1956-59. Former secretary, Carroll County Republican State Central Committee. Member, Carroll County Economic Development Commission. Member, American, Maryland and Carroll County Bar Associations; Westminster Jaycees. Married. Appointed to the House of Delegates, November 13, 1972, vice Jacob M. Yingling, resigned.



MARTIN S. BECKER, Democrat, District 20; born in Washington, D.C., June 3, 1926. Attended Washington, D.C. public schools; Emory and Henry College; University of Virginia; George Washington University Law School, LL.B., 1950. Admitted to the Maryland Bar, 1956. Served in the U.S. Navy, 1944-47. Former member and board member, Young Democratic Club of Montgomery County. Member, American Bar Association; Phi Sigma Delta. Former member and legal counsel, Silver Spring Junior Chamber of Commerce. Married. Member of the House of Delegates 1967-1976. Chairman, Economic Matters Committee, 1971-1976. Chairman, Montgomery County delegation, 1971 Session. Member, Legislative Council, 1971-1976. Resigned August 1, 1976.



ALEXANDER BOLLING BELL, Democrat, District 20; born in Petersburg, Va., August 8, 1921. Attended Washington, D.C. public schools; Wilson Teachers' College. Served in the U.S. Army Air Corps, 1943-46. Member, Kensington-Wheaton Democratic Club; Knights of Columbus. Married. Member of the House of Delegates since 1967.



KAY G. BIENEN, Democrat, District 21; born in New York, N.Y., January 1, 1938. Attended New Rochelle, N.Y. public schools; Skidmore College, B.A., 1959; University of Maryland. Member, Prince George's County Goals Advisory Committee; Prince George's County Child Abuse Task Force. Alternate, Democratic National Convention, 1972. Member, Women's Political Caucus. Member, Board of Directors, past Legislative Chairman, and member, Committee on Improved Community Relations, Mental Health Association of Prince George's County. Member, League of Women Voters of Prince George's County; Citizens Advisory Committee of Greater Laurel Hospital Authority; Montpelier PTA; Laurel Art Guild. Past executive committee member, Oakland Citizens Association. Member, Executive Committee, National Conference of Christians and Jews. Married. Member of the House of Delegates since 1975.

