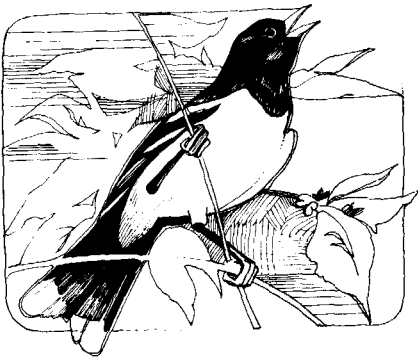
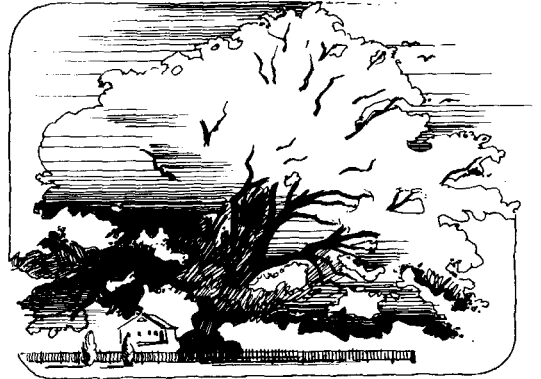
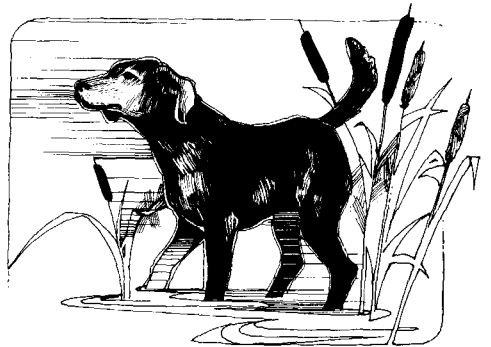


STATE TREE—Maryland has chosen for its tree the White Oak (*Quercus alba*). The magnificent specimen shown among the illustrations of Maryland's symbols is known as the Wye Oak and is located at Wye Mills on the Eastern Shore. It is now owned by the State (Chapter 731, Acts of 1941; Code 1957, 1971 Repl. Vol., Art. 41, sec. 76).



STATE BIRD — The Baltimore Oriole (*Icterus galbula*) is the official Maryland Bird, designated by the General Assembly (Chapter 54, Acts of 1947). Special provisions have been made for its protection (Chapter 154, Acts of 1882). (Code 1957, 1971 Repl. Vol., Art. 41, sec. 77).

STATE DOG—By Chapter 156, Acts of 1964, the Chesapeake Bay Retriever was declared to be the official Dog of Maryland (Code 1957, 1971 Repl. Vol., Art. 41, sec. 77B).



STATE FLOWER—The Black-Eyed Susan (*Rudbeckia hirta*) is the official Maryland Flower, designated by the General Assembly (Chapter 458, Acts of 1918). A yellow daisy, or coneflower it blooms in late summer (Code 1957, 1971 Repl. Vol., Art. 41, sec. 75).