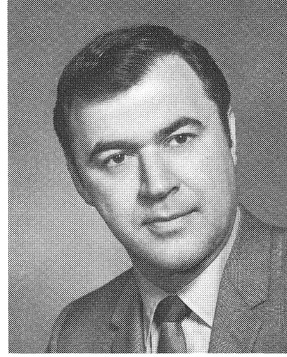


ROY N. STATEN
District 13-G



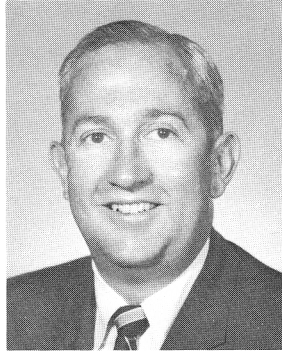
NEWTON I. STEERS, JR.
District 3-A



MELVIN A. STEINBERG
District 13-B



NORMAN R. STONE, JR.
District 13-F



EDWARD P. THOMAS
District 2

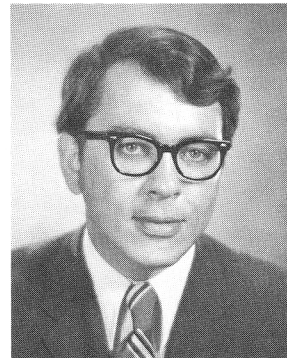


VERDA WELCOME
District 10



WILLIAM A. WILSON
District 1-C

MEMBER RESIGNED
FOLLOWING THE END
OF THE
1973 REGULAR SESSION.



ROBERT E. BAUMAN
District 15
(resigned)