

EXECUTIVE BRANCH

VOTERS OF MARYLAND

Board of Revenue Estimates

State Appeal Board

COMPTROLLER

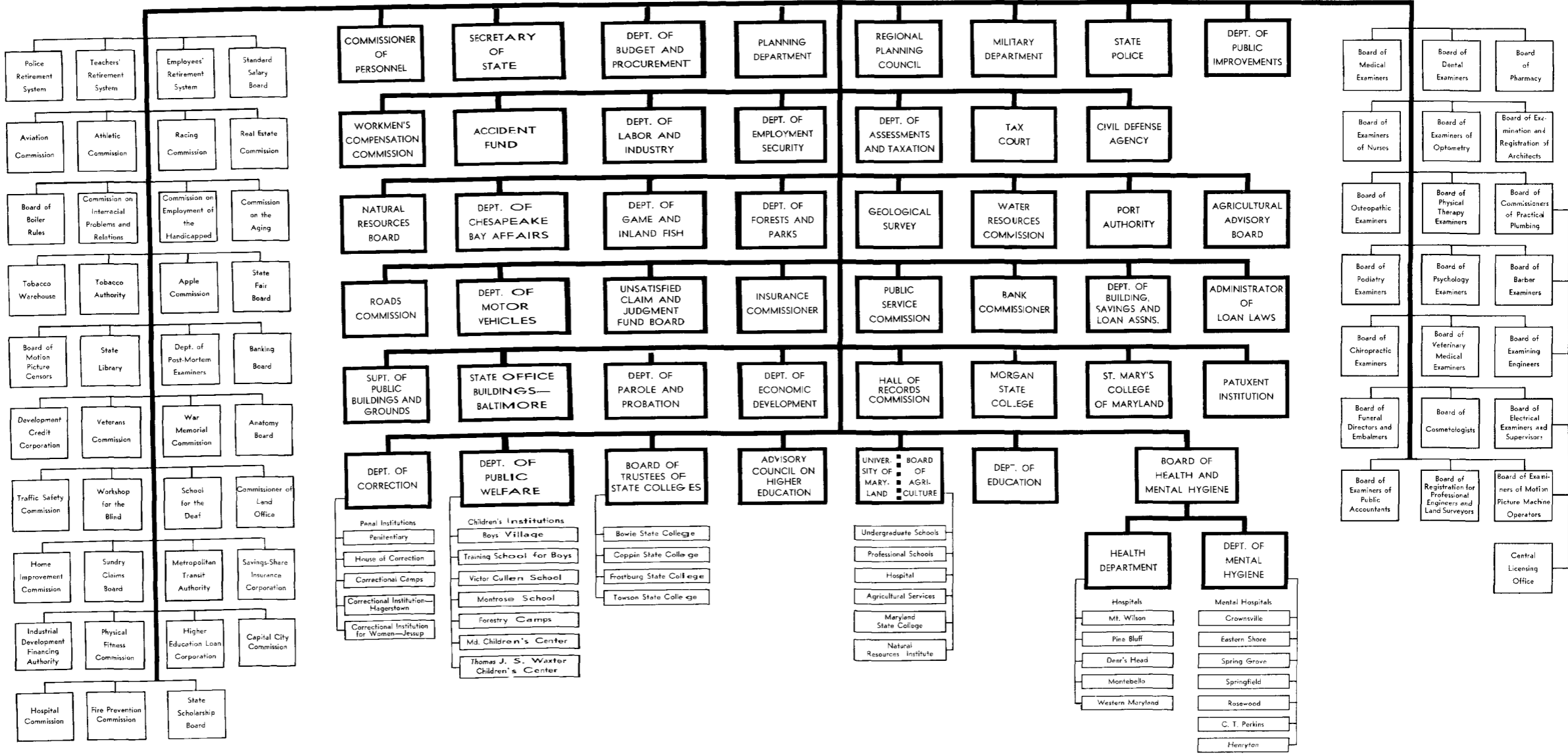
AUDITOR

GOVERNOR

ATTORNEY GENERAL

Board of Public Works

TREASURER (Elected by General Assembly)



- Board of Medical Examiners
- Board of Dental Examiners
- Board of Pharmacy
- Board of Examiners of Nurses
- Board of Examiners of Optometry
- Board of Examination and Registration of Architects
- Board of Osteopathic Examiners
- Board of Physical Therapy Examiners
- Board of Commissioners of Practical Plumbing
- Board of Podiatry Examiners
- Board of Psychology Examiners
- Board of Barber Examiners
- Board of Chiropractic Examiners
- Board of Veterinary Medical Examiners
- Board of Examining Engineers
- Board of Funeral Directors and Embalmers
- Board of Cosmetologists
- Board of Electrical Examiners and Supervisors
- Board of Examiners of Public Accountants
- Board of Registration for Professional Engineers and Land Surveyors
- Board of Examiners of Motion Picture Machine Operators
- Central Licensing Office