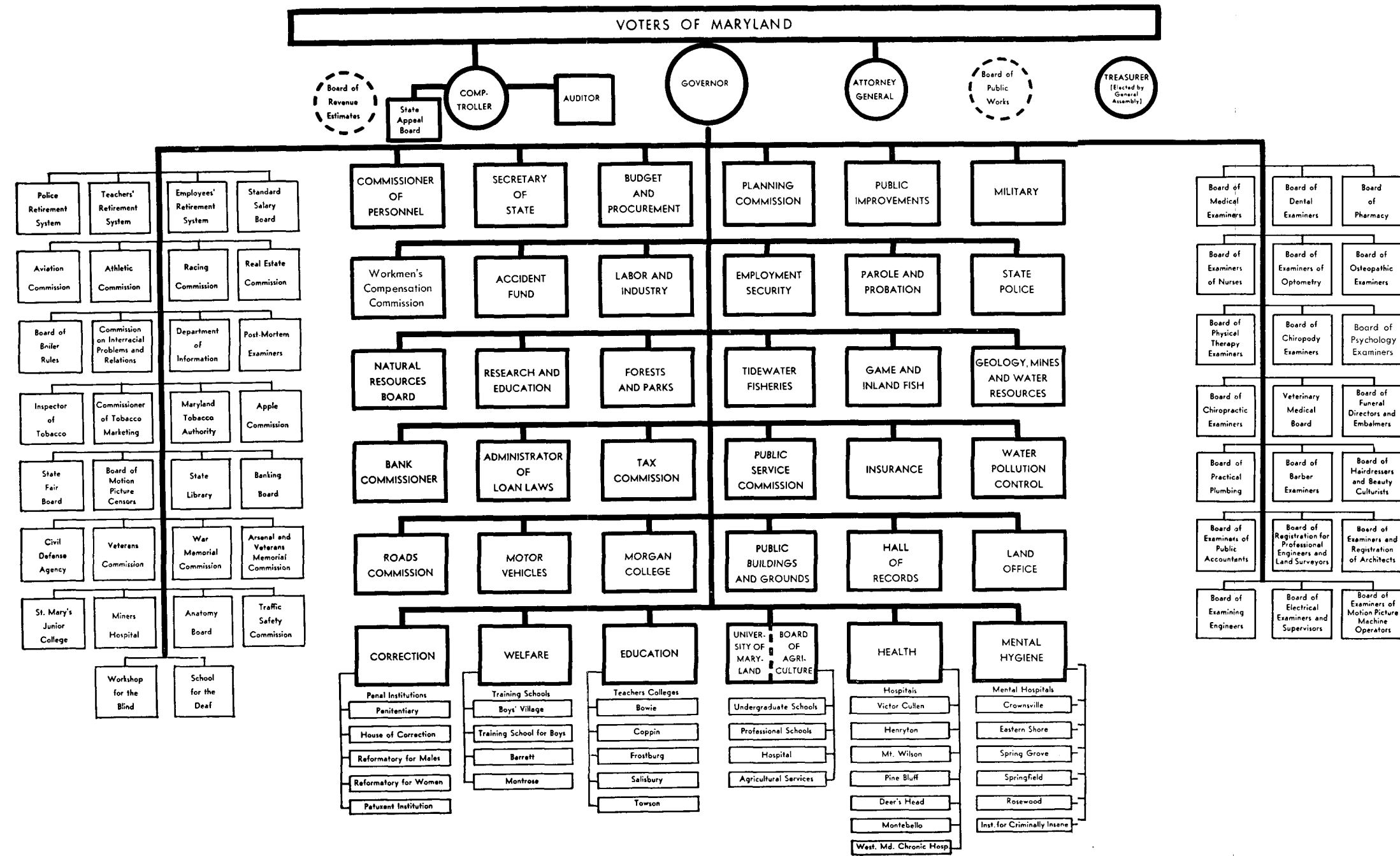
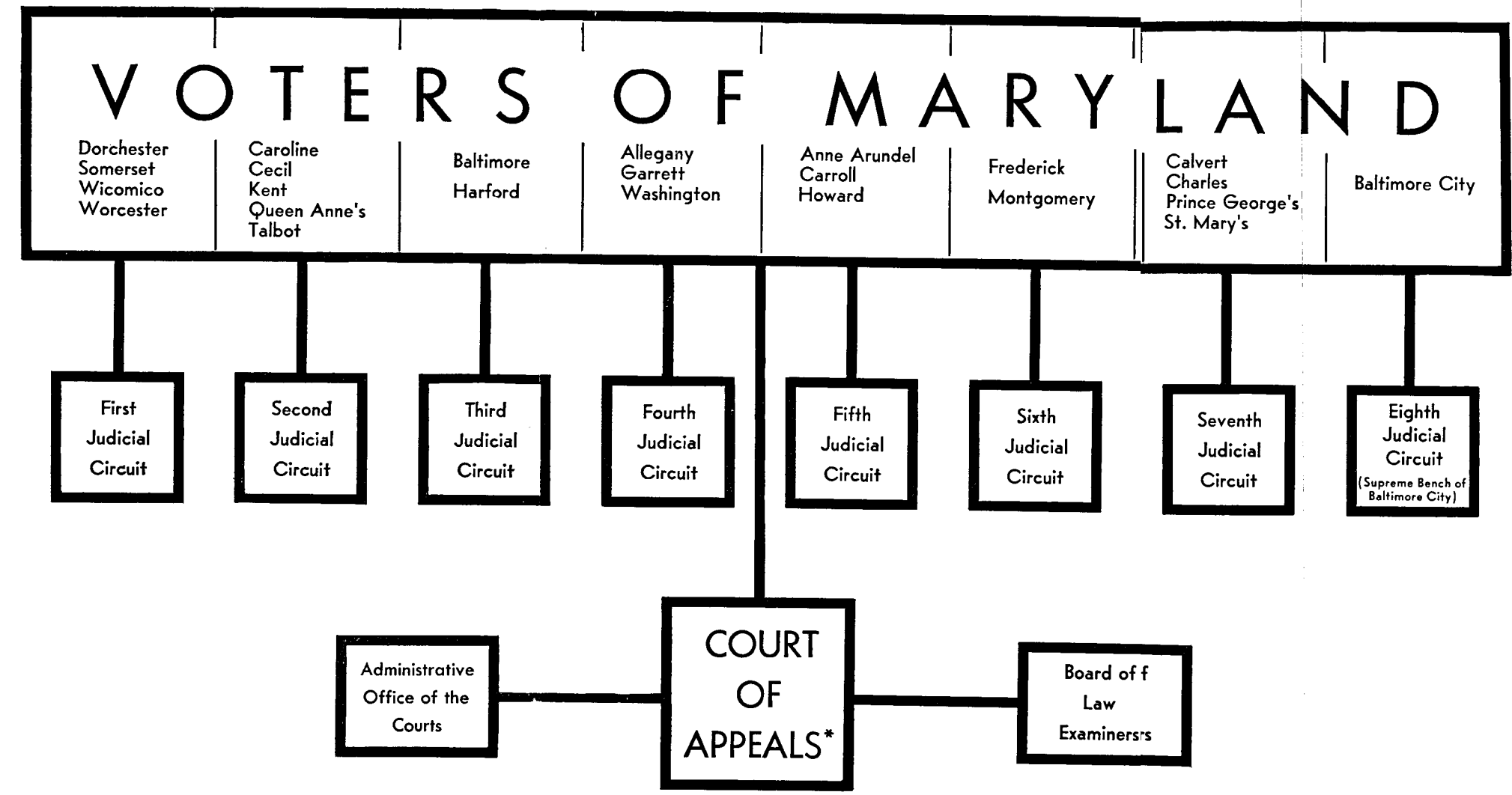


ORGANIZATION OF MARYLAND STATE GOVERNMENT

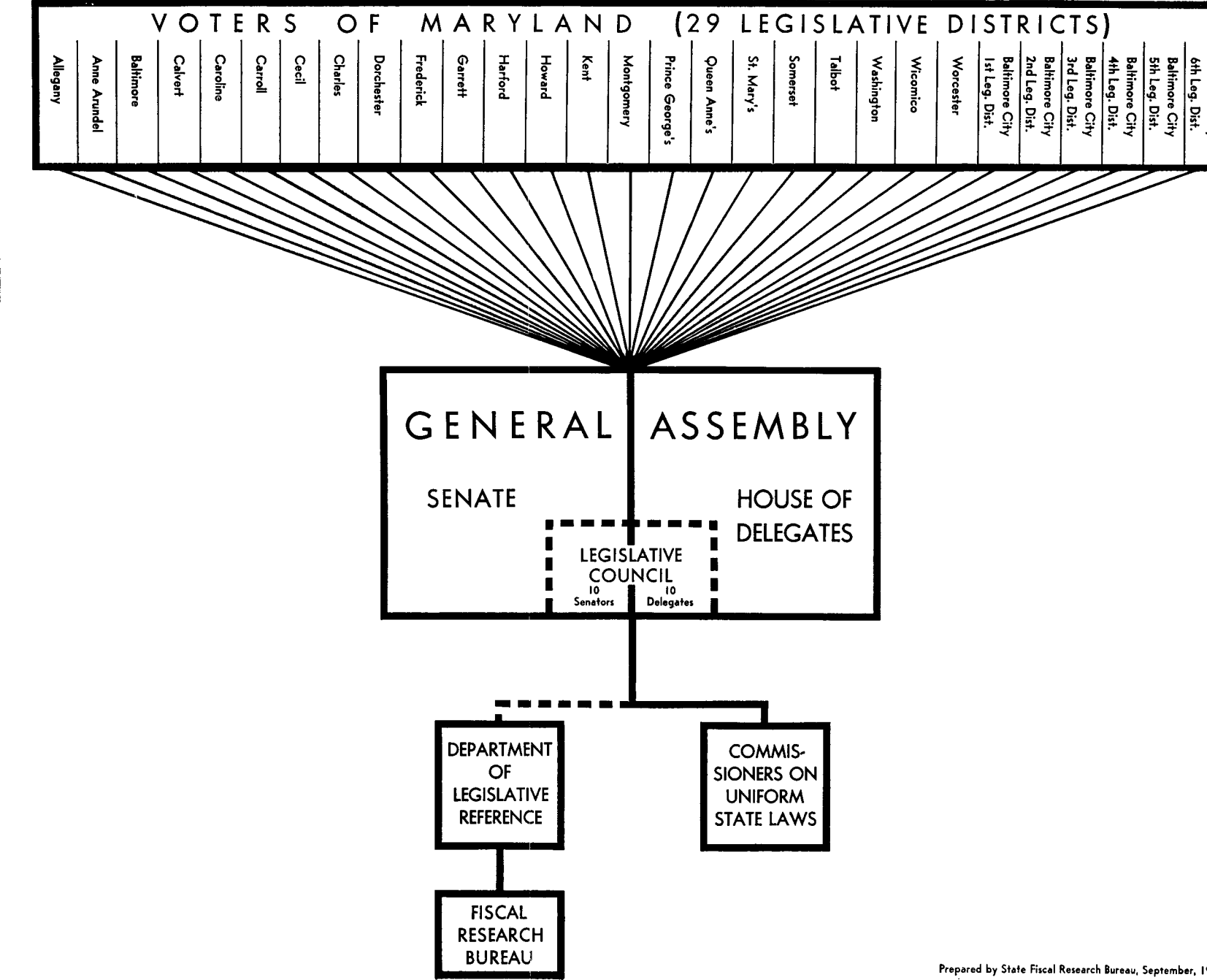
EXECUTIVE BRANCH



JUDICIAL BRANCH



LEGISLATIVE BRANCH



*Consists of five Judges: One from each of the First, Second and Third Appellate Judicial Circuits and two from the Fourth.
 First Appellate Judicial Circuit: Caroline, Cecil, Dorchester, Kent, Queen Anne's, Somerset, Talbot, Wicomico, Worcester
 Second Appellate Judicial Circuit: Anne Arundel, Baltimore, Calvert, Charles, Harford, Prince George's, St. Mary's
 Third Appellate Judicial Circuit: Allegany, Carroll, Frederick, Garrett, Howard, Montgomery, Washington
 Fourth Appellate Judicial Circuit: Baltimore City