



TILGHMAN EATON  
Queen Anne's County



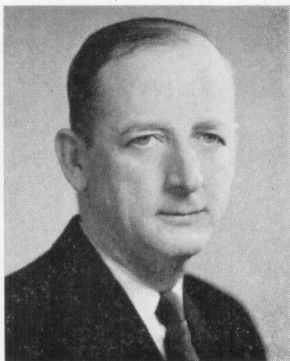
HARRY C. EDWARDS  
Garrett County



JOHN P. FITZGERALD  
Baltimore, 5th



SOL J. FRIEDMAN  
Baltimore, 4th



KERMIT S. GLOTFELTY  
Garrett County



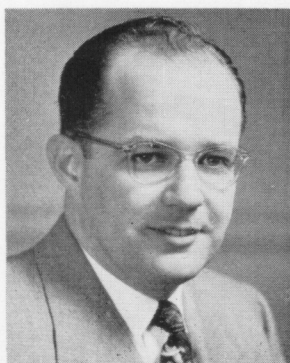
GILBERT GUDE  
Montgomery County



JOSEPH H. HAHN, JR.  
Carroll County



JAMES E. HANCE  
Calvert County



HENRY H. HANNA, JR.  
Wicomico County