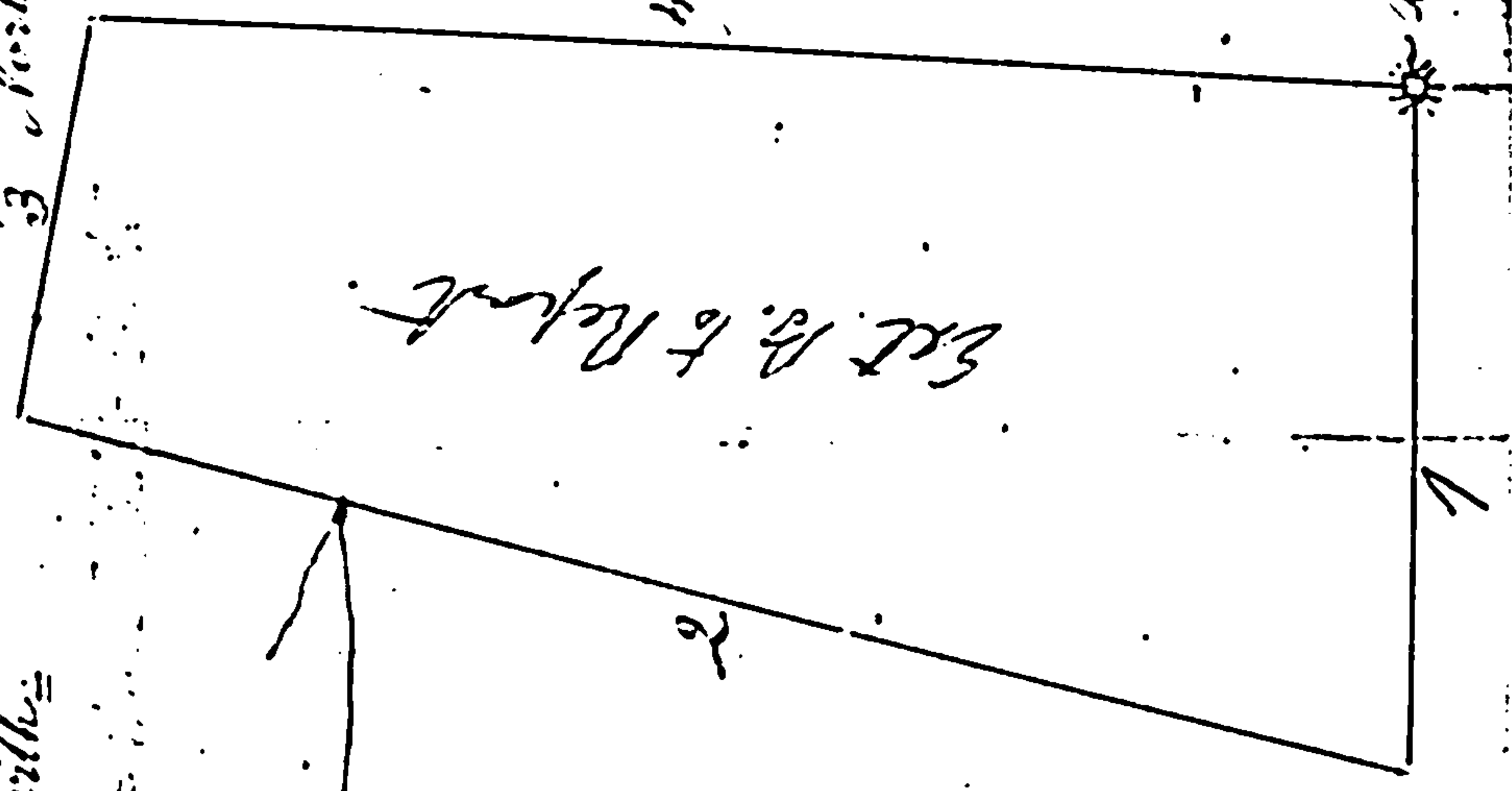


February 13<sup>th</sup> 1867

This plot courses and Distances of a Piece of Land that George Abiles, Purchased from Charles St Albannings; It being part of Charles St Albannings of Aspel Orchard; Lying and being in Frederick County, State of Maryland, and Beginning for the same in the Center of a Stone fence And the given line Between George Abiles and Charles St Albannings; and Running as follows; First North 25 1/2 degrees West 2 1/10 tenths perches to Stone heap, Second North 22 3/4 degrees East 46 1/10 tenths perches to a Stone heap at the end of Charles St Albannings third cut line; then with a said cut line reversed, third South 72 degrees East 12 7/10 tenths perches to Stone heap; fourth South 74 degrees East 43 3/10 tenths perches to the Beginning; Containing A. 3 R. 21. Acres. & Land, more or less.



4. A. 3. R. 21. A. 21. Acres.  
12 - 2 - 30

By a Scale of 10 Equal parts

February 13<sup>th</sup> 1867, Benedict Knott, Suror