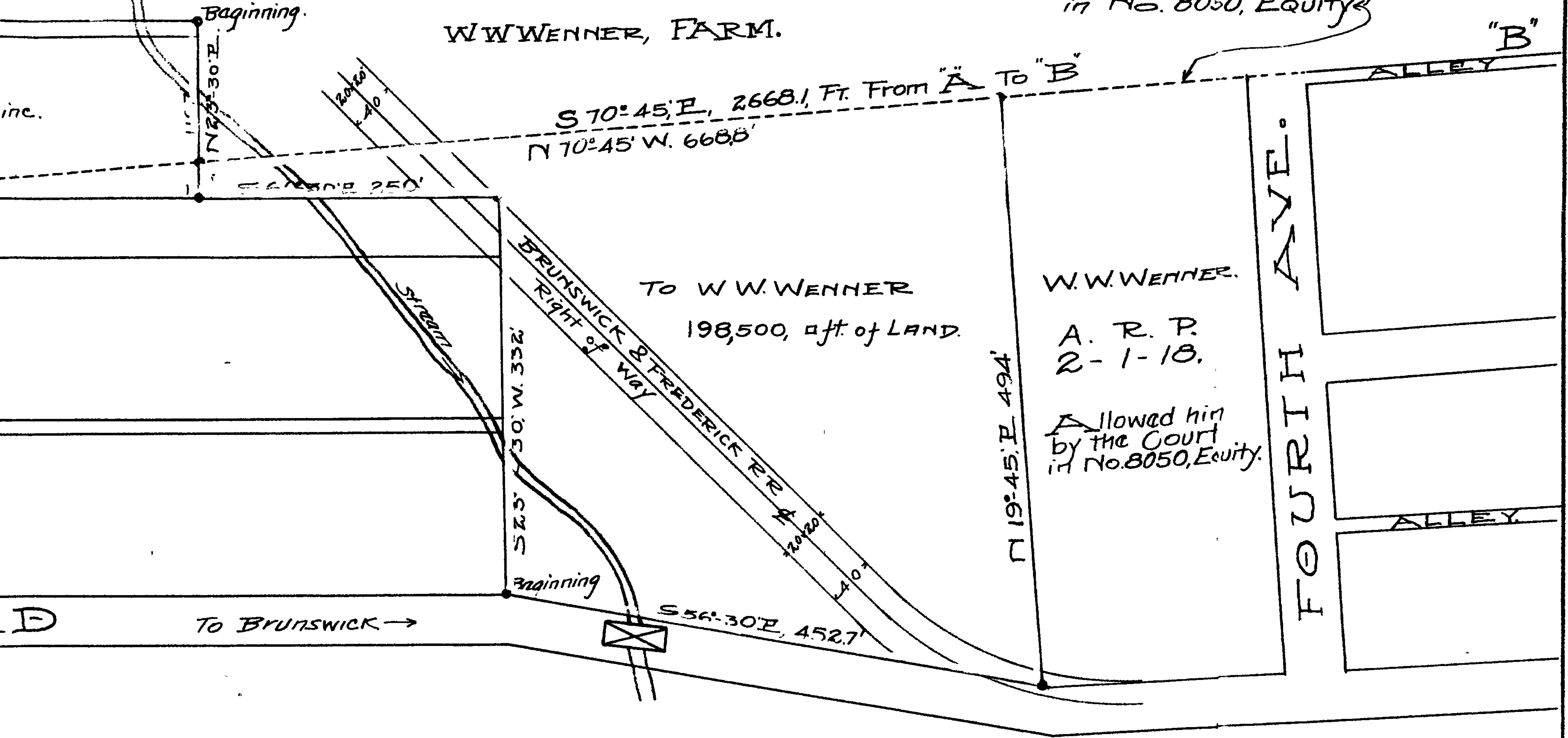


Note: The dotted line from "A" to "B" is a division of the Real Estate of Susan A. Wenner deceased, as construed by the Court in No. 8050, Equity



Note: See PLAT of ROSEMONT LAND RECORDS of Fredk. Co

Note: See Equity 8050 of the CIRCUIT COURT of Frederick County, Md

BALTIMORE & OHIO R. R. Co.

Note: Exchange to W.W. Wenner, is shown, shaded in brown
" " A. A. Susan W & Virginia R. Wenner, is shown, shaded in red

WENNER