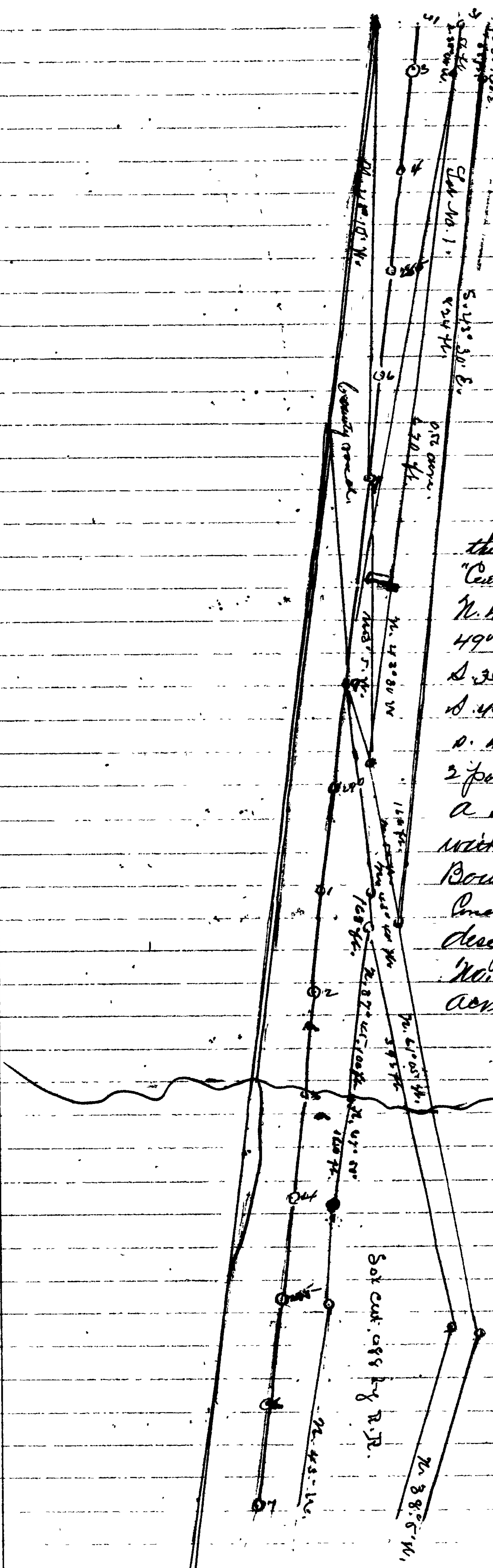


No. 3633 Equity,  
Continued, Exhibit D. L. B.



Description  
Lot No. 2.

Beginning for the same at a point on the extended line N. 45° E. 94 feet from "Center line of Rail Road" and running thence N. 45° W. 75 feet N. 35° 45' W. 130 feet N. 49° W. 300 ft. N. 57° 30' W. 207 feet thence S. 35° 55' E. 118 feet S. 51° 30' E. 86 feet S. 49° E. 300 feet S. 53° 45' E. 130 feet S. 47° E. 72 feet then N. 45° E. 30 feet to point of beginning. The same being a strip of land 30 feet wide Parcel used and adjacent to the railroad. Boundary line of Rail Road Indemnities between the Points designated. The above comprises Lot No. 2. and contains 0.45/100 of an acre. More or less.

P. P. Dandridge  
Surveyor.