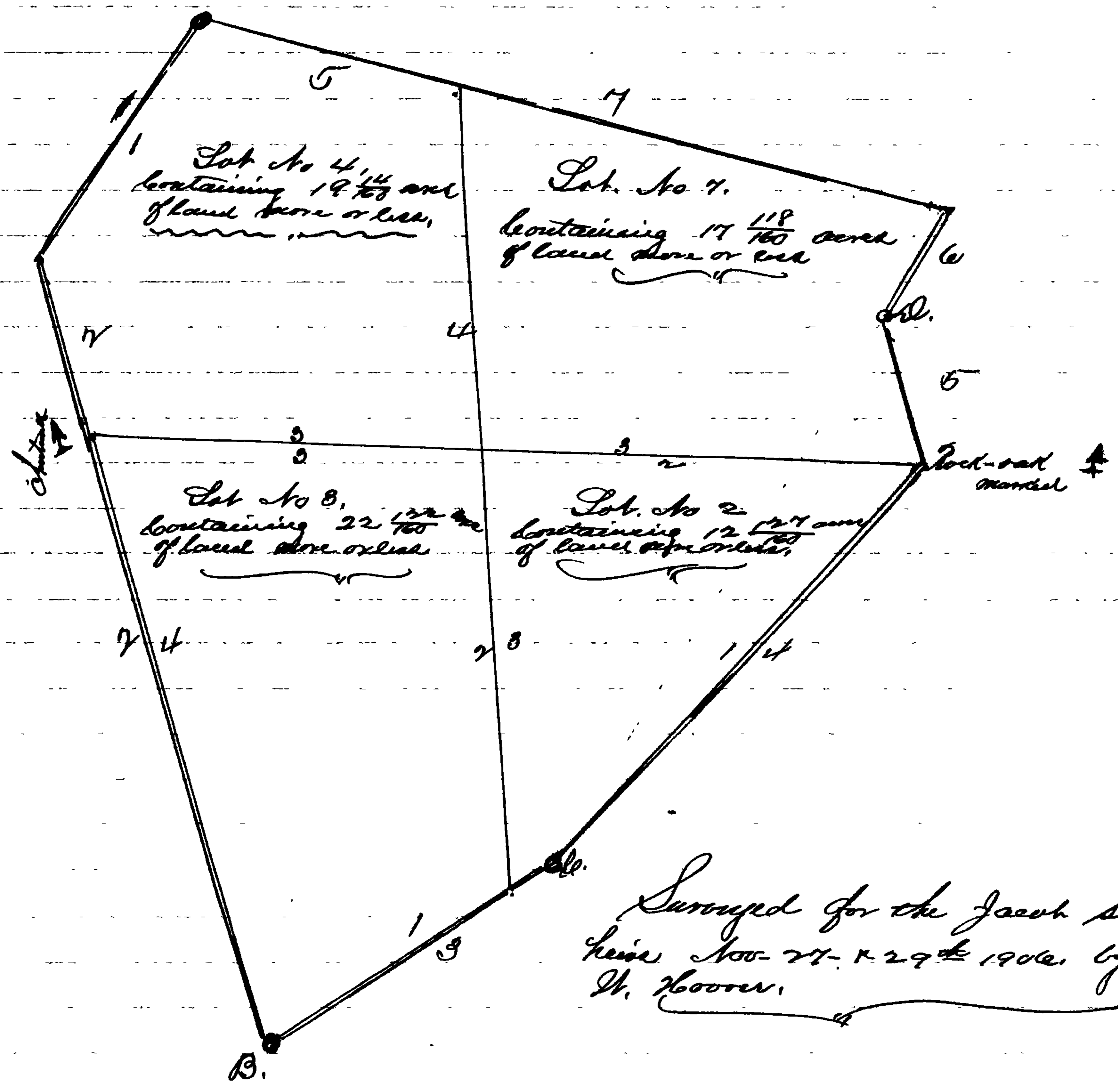


No. 8064, Equity.

Exhibit No. 2.

Part of Mountain Lands.

Filed January 7, 1907.



Surveyed for the Jacob Shank, heirs Nov 27 & 29th 1906, by John W. Hoover.

Description of Mountain Lots.

Filed Jan'y 7, 1907.

Beginning for Lot No. 4, at the beginning of a deed from Alex
 Calder Mitchell & wife to Jacob Shank it being the North West Corner
 of Said deed and running thence South 33° East 41.76 feet to the
 end of the 1st line of the whole tract of land called "Bear
 Swamp Farm, granted George Scott Esq. Esq. 1795, thence South 16°
 East = 77. feet to a stone pile being about 6 feet Eastward of
 a marked Chinkapin tree, then having the outlines of Said deed
 and running South 86° East 54 feet to a stone pile (where
 lots Nos 1, 2, 3 & 4, Corner,) from thence North 54 3/4 feet to
 intersect the closing line of Said deed from Mitchell & wife
 to Shank at the end of 70 feet, thence North 74 3/4° West 39.32
 feet to the place of Beginning containing 19 1/4 acres of land
 More or less.

Beginning for Lot No. 3 at B, it formerly being one of
 the Corner of George Suman (now mine lands), and running thence