

see A. Wonnors farm at Brunswick  
order of the Executors.

-1281

to  
to

to

70. 20 1/2 E 80

S 61 1/2 E 6 1/2

S 22 1/2 W 5 1/2 26

S 73 1/4 E 60 3

S 27 1/2 W 24.1

State of 10 Equal parts  
Rufus A. Leger

Nov. 12 - 1906

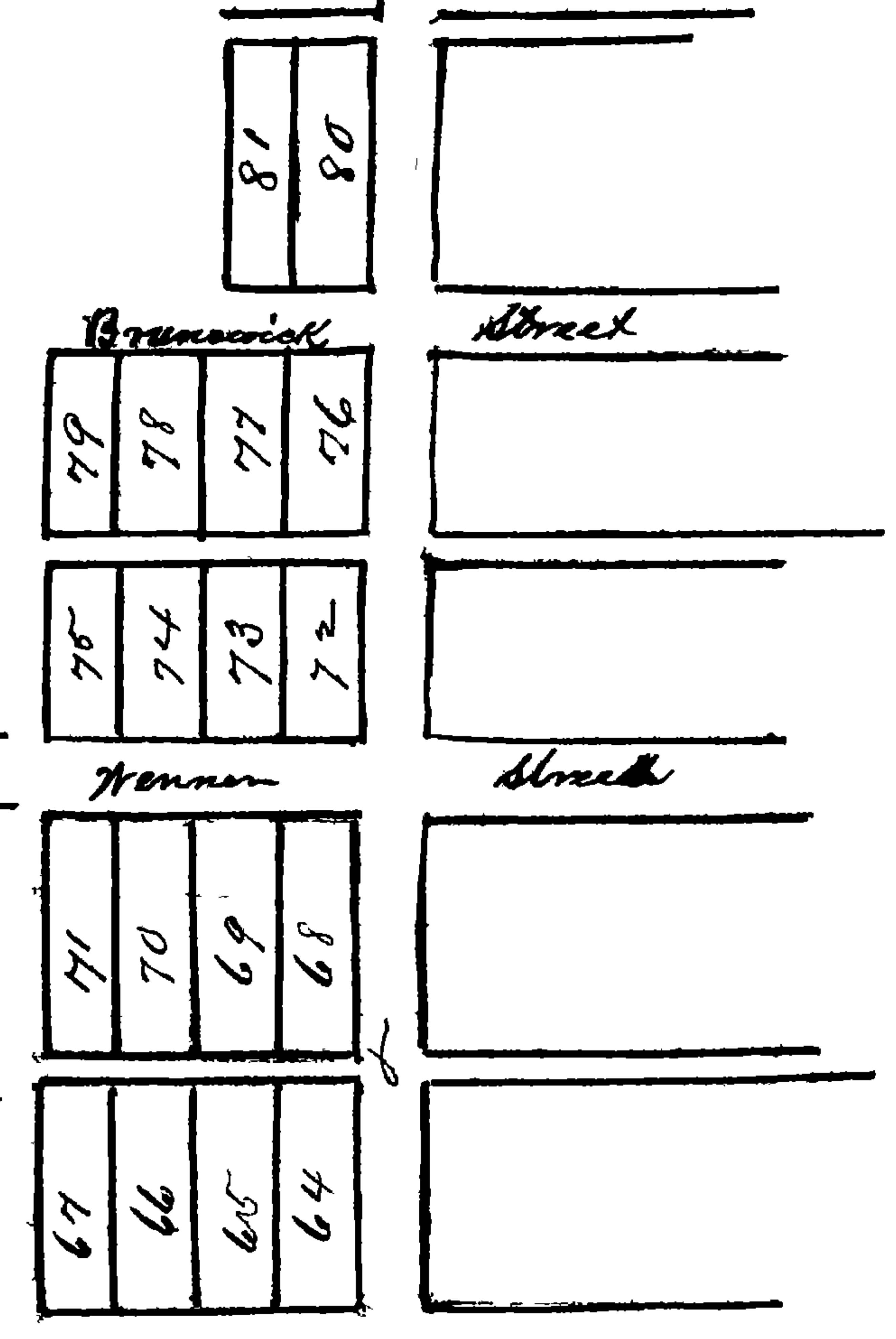
W W Wonnors  
old Barn

W W Wonnors  
a a p  
2-1-18

W W Wonnors  
New House

Road to Knoxville

W W Wonnors et al Brunswick  
to learning land from  
Ray B Wonnors



Knoxville