

No. 6103. Equity

State of Maryland
Frederick County

I hereby Certify that on this twenty three day of September in the year Eighteen Hundred and Forty five before the Subscriber a Justice of the Peace in and for said County and State, personally appeared John C. Holtz and Maria Jane Holtz his wife and did each acknowledge the foregoing deed to be their respective act,

J. M. Harding

Filed April 3rd 1893.

Endorsed -

October 19th 1865.

Received for Record and same day was recorded in Liber No. 26 No. 3 folio 193 one of the Land Records of Frederick County & Exam^d

Not Jas W. G. Coats
Clerk

Filed April 3rd 1893.

Exhibit No. 7.

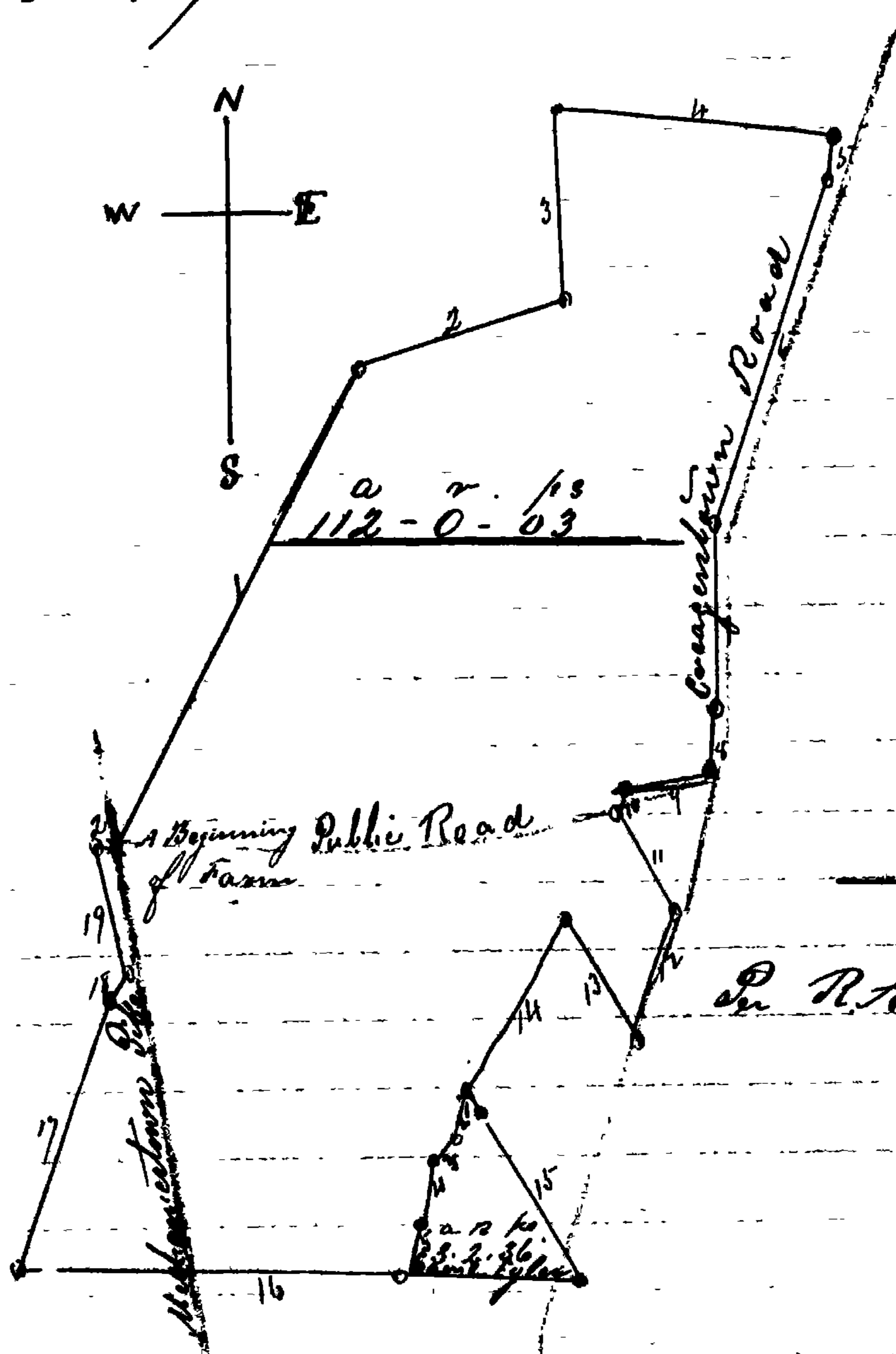
Exhibit No. 7

Courses and distances for Samuel Egles part of said farm as now laid off & surveyed.
Beginning for the same in the middle of a ravine or branch at the end of a line drawn N 25 W. 2³⁵/₁₀₀ ps. from a stone planted at the end of the 14th line of the whole farm and running thence by and with the middle of said ravine or branch, the five following courses and distances to wit: S 23¹/₄ W. 8³⁵/₁₀₀ ps. S 43¹/₂ W. 5⁷⁰/₁₀₀ ps. S 9¹/₂ W. 5.240 ps. S 15¹/₂ W. 8 ps. S 27 W. 10¹/₂ ps to the end of 34 ps, on the 16th or N. 87 W. 107 ps line of the whole farm and with it reversed S. 87⁰. 34 ps to a stone, thence N 25 W. 35 ps. to stone thence by and with the first line hereof reversed N. 25 W. 2⁵⁵/₁₀₀ ps. to the place of beginning, containing 3² - 2⁷ - 36¹/₂ ps

Filed April 3rd 1893.

Exhibit No. 8

Exhibit No. 8



Scale 40 Pches

D. R. A. Ragan Surveyor
November 23rd 1892.