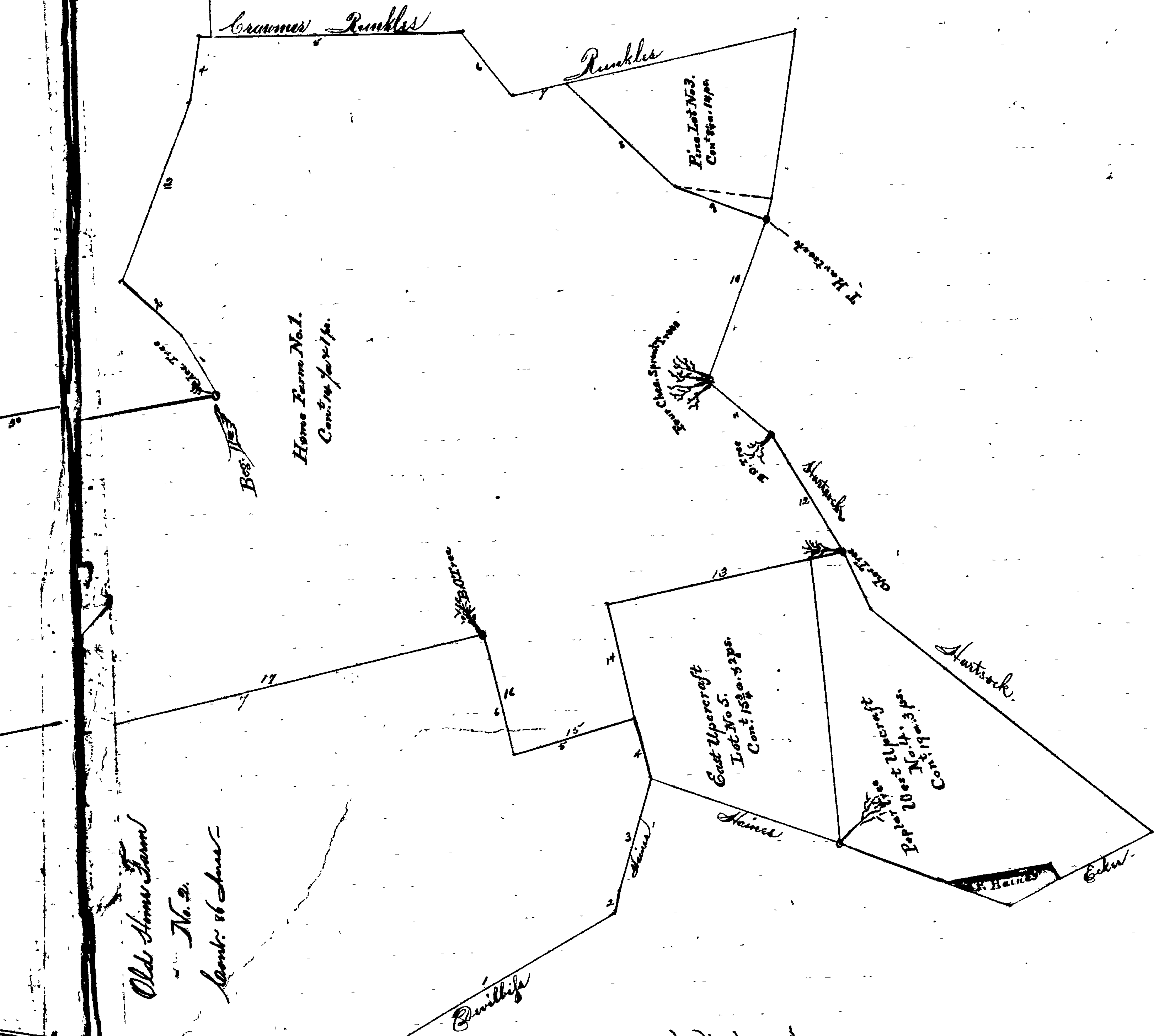


No 5315 Equity.



The Red lines show the outlines of all the parts of tracts of land called 'The Runway on Lilloo' and 'The Runway on Joshua's Lot' which Philip Minkum did seize, and parcel of which is now divided into 33 parts, or Lots, by Black Line and Lots formed, these are numbered from 1 to 33 inclusive. The Old or family planted Stems are shown in this Plat thus & all the Stems now planted, are shown thus & The double Black Line shows the New Public's Road referred to in the Certificate of the several Lots.