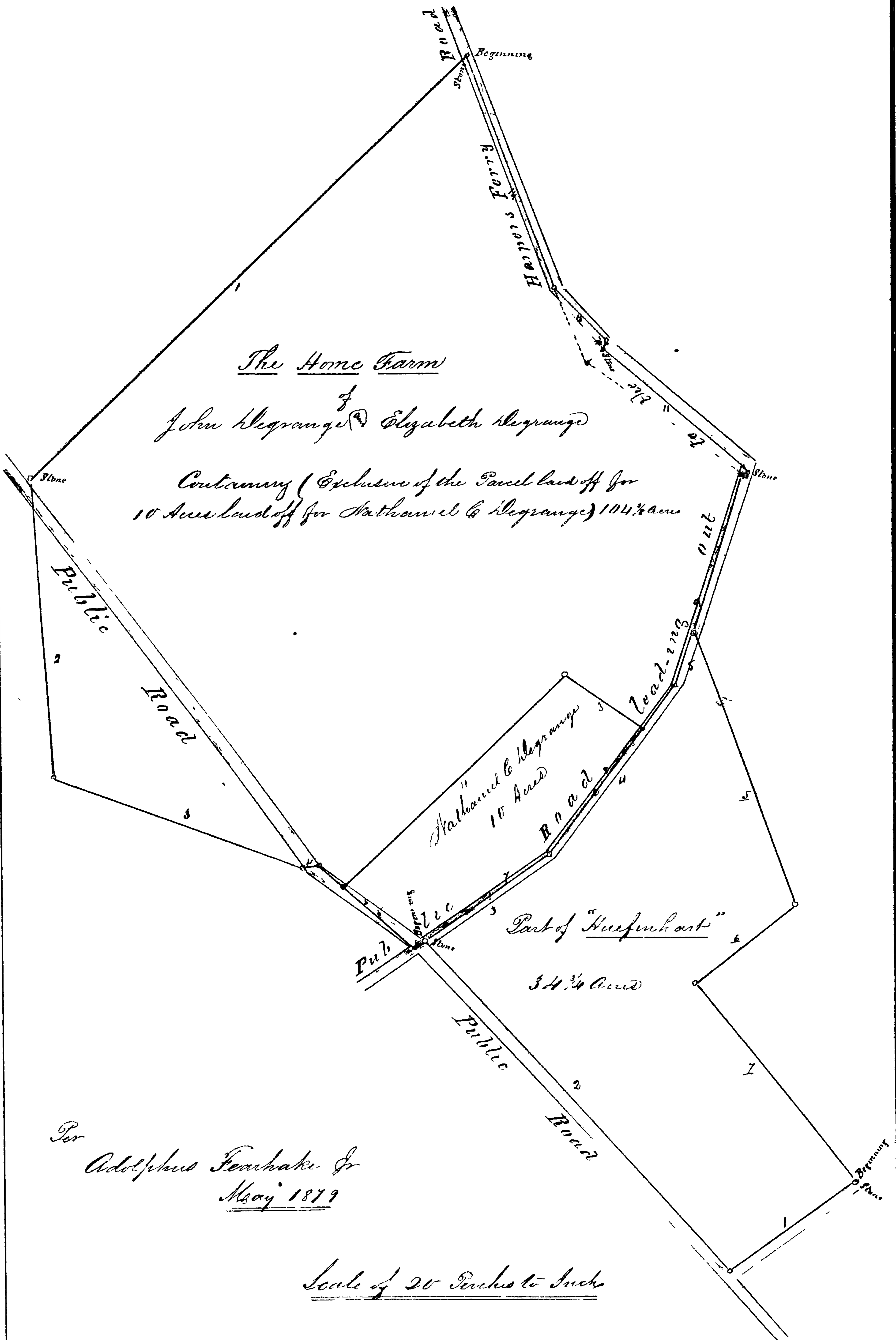


# No 4524 Equity

Steel in  
 in Reprange  
 till with  
 ' 36 1/2"  
 Reprange  
 1870 for  
 21 1/2" from  
 by Platant-  
 Reprange  
 115° East  
 and desk  
 d. 114  
 10 Acre  
 parcel  
  
 in Reprange  
 and Record-  
 the same  
 part,"  
 "West  
 's North  
 to road  
 hart"  
 4 1/2° East  
 in the  
 1/2 South  
 led to  
  
 "Elizabeth  
 Pleasant"  
 lauded  
 "Volume  
 at 35 per-  
 ranches  
 land  
 the road  
 from "and  
 "land"



Per  
 Adolphus Fenchake Jr  
 May 1879

Scale of 20 Feet to Inch