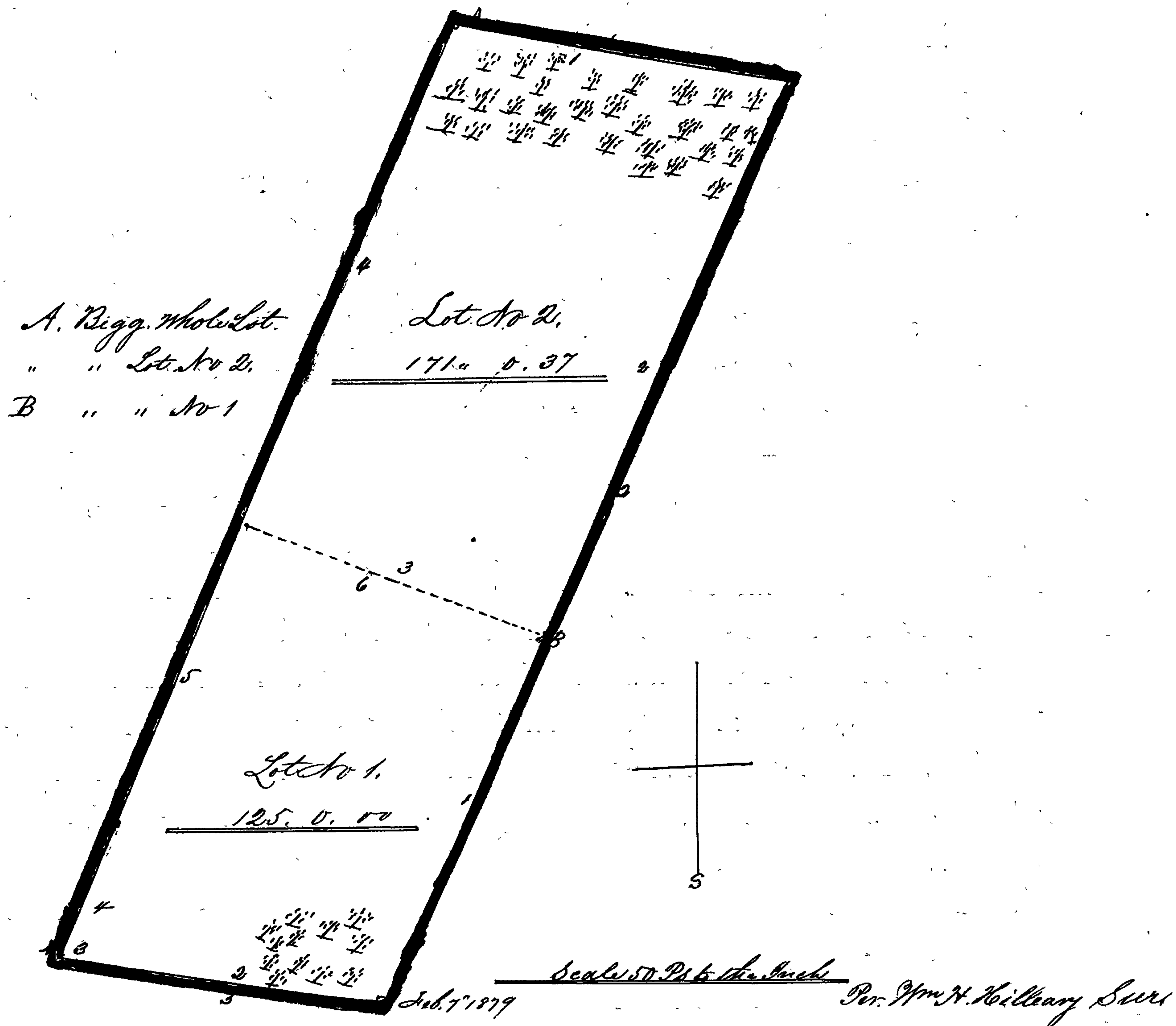


Plot of John McMillan's Farm, part of Lot No. 6, part of The Reg. in Maryland.



Filed July 17, 1879.

Trustee's Sale

By Virtue of a decree of the Circuit Court for Frederick County, sitting as a Court of Equity passed in No. 4401 Equity in a cause wherein the Frederick Iron Savings Institution is complainant, and William S. Ross Surviving Trustee and Others are defendants the undersigned Trustee will offer at Public Sale, at the City Hotel Frederick City Maryland, on Saturday, February 15th, 1879, at 12 o'clock M. that Valuable Farm, now in the possession of John Hanson McMillan called Fertile Plains situated in Petersville District Frederick County State of Maryland adjoining the Village of Petersville and containing 300 Acres of Land. The improvements consist of a substantial Brick Dwelling House containing 4 large rooms and 2 Halls on the first floor with large back building containing dining room pantry and kitchen with cellar under the back building, and a large garden over the outer building, also a new Barn, 92 x 38 feet, corn house, carriage house, meat house and Blacksmith Shop, poultry house two dairies. The farm is well watered and has water from Springs of never failing and running water in every field. The farm forms part of a tract of Land known as the Maryland Tract, situated near the Village of Petersville three miles from Knoxville and 2 1/2 miles from Berlin, two Stations on the B & O. Railroad and is conveniently situated in regard to Mills, Churches and schools. This Farm has on it about 85