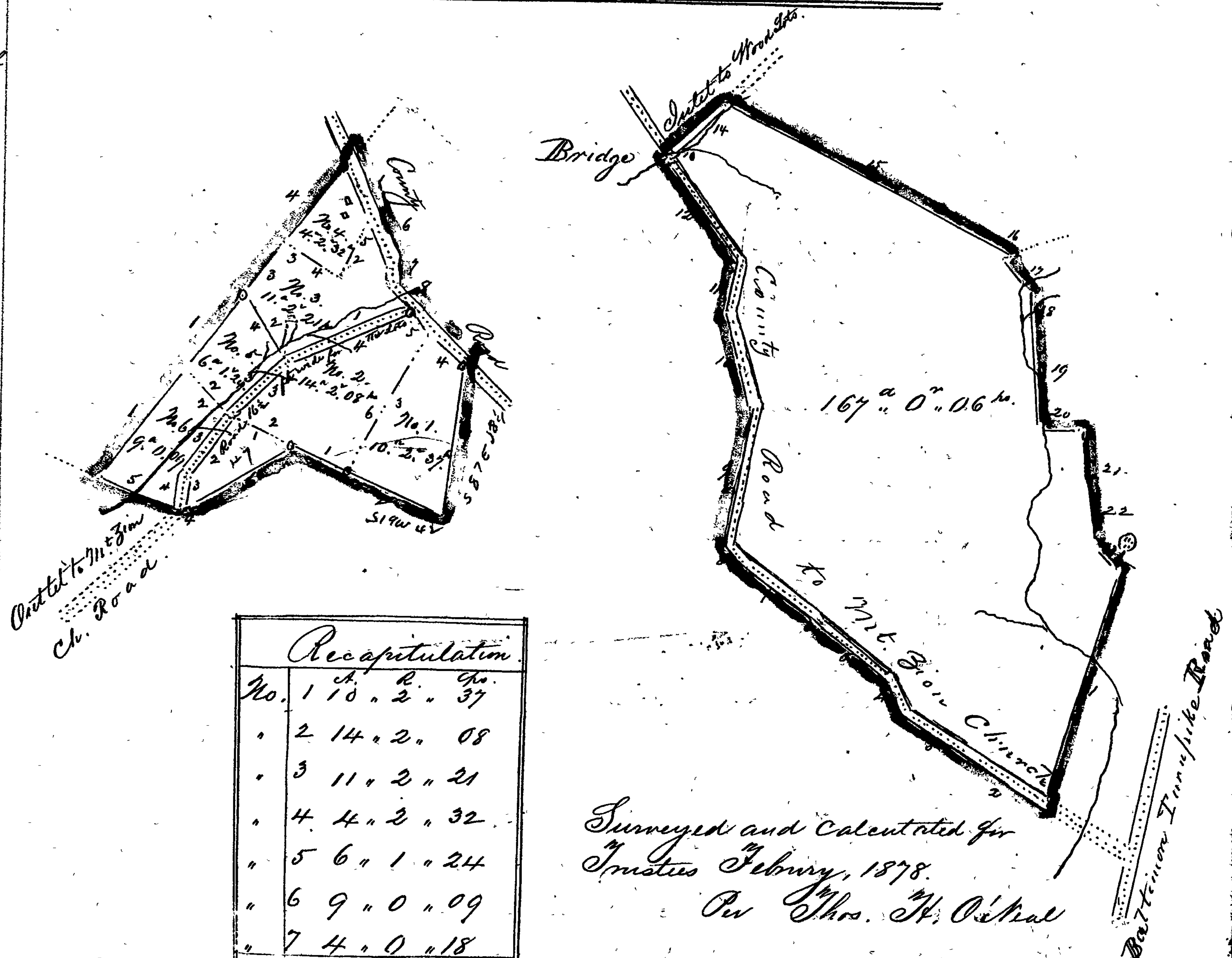


Exhibit  
"B" to  
Trustees  
Report of  
Sales.

The late John Smith's Farm, and Timber Lots.



Recapitulation			
No.	A.	R.	po.
1	10	2	37
2	14	2	08
3	11	2	21
4	4	2	32
5	6	1	24
6	9	0	09
7	4	0	18
			61 0 29

Surveyed and Calculated for  
Trustees February, 1878.  
Per Chas. H. O'Neal

Scale of 50 Yds. to an inch.

See Courses and Distances accompany these Plans.  
Filed March 26th, 1878.

Bearings and Distances of Wood Land of the late John Smith, of Jacob, lying near Fair View, Frederick County, Maryland, surveyed and calculated at the request of Mary A. Smith and Joseph G. Miller Trustees; being part of a tract of land called "Fielders Manor", now divided into 7 lots and which are contained, severally, within the metes and bounds, courses and distances following, viz: —  
Lot No. 1. Beginning in the middle of the Public Road leading from the Baltimore Turnpike, across the Mountain by the dwelling on the farm of the late Lawson Lightner, it being at the end of 112 perches on the 1st. line of that part of said original tract of land called "Fielders Manor", which was on the 21st. day of June 1791, deeded by John Ludwig Deiderly to John Smith and is also the beginning of the parcel of said originally deeded by the late John Smith of Jacob, and wife, to John Hagan for 27 acres 2 roods and 35 perches, and running thence by and with the said 1st. line revised with a correction for the magnetic variation viz: S. 87° E. 58 1/4 perches, to a Chestnut stump over which is now growing a Chestnut tree, it being also the end of the 5th. line of the deed from Adolphus Jackson and wife, to Emma Hedges, then with the 6th. line