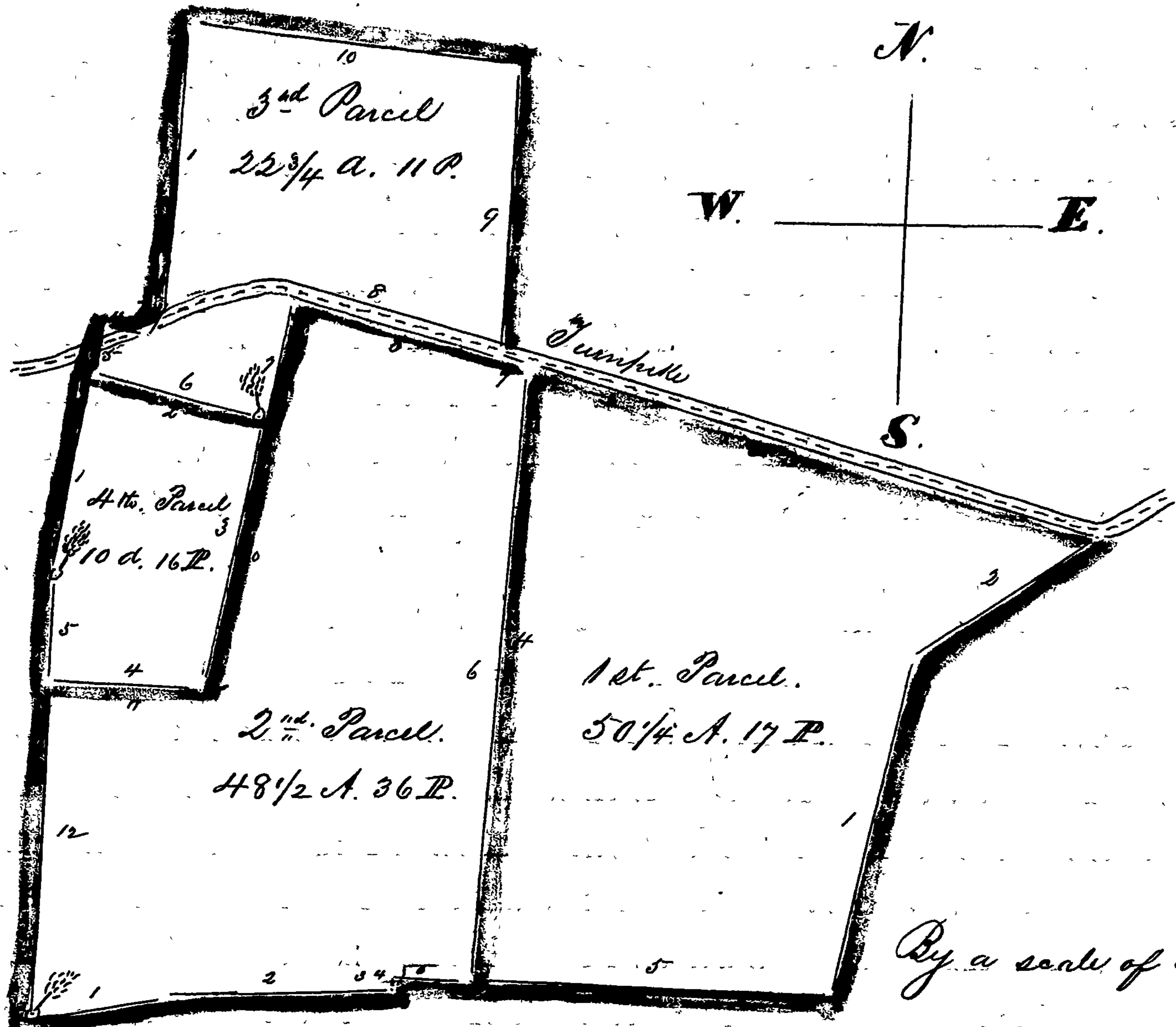


+ 113 7/10 ps.  
 ...umpike, and  
 ...wife then  
 as before  
 use for a  
 ... and  
 West 23 1/4  
 ... South  
 ... 28 1/2 ps.  
 ... and convey  
 line allowing  
 the place  
 of land  
 ... at a stone  
 conveyance  
 ... and  
 the necessary  
 now planted,  
 ... 87 3/4 West  
 New Windsor  
 now planted,  
 ... East 30 1/4  
 ... North  
 ... Windsor  
 ... of the  
 wife, then  
 ... allow.  
 North 85°  
 ... and  
 the fourth  
 the beginning  
 the said  
 to last line  
 ...  
 ... of divi  
 ... now  
 ... 57 1/10  
 ... to a  
 ... from  
 allowing  
 to place of  
 ... land  
 ... 1878.



By a scale of 30 ps. to an inch.

Filed April 20th 1878.

Exhibit C.

I hereby certify, that at the request of the heirs of Isaac C. Nicodemus, late  
 of Superior County, dec'd., I have carefully surveyed all the following described part  
 of the Real Estate of the late Isaac C. Nicodemus and have laid off the same  
 into three lots as shown by the subjoined Plat; it being the larger part of  
 the second parcel of land described in the deed from Wm. Duddman and wife,  
 to the said Isaac C. Nicodemus bearing date on the 10th day of April 1844,  
 and is known as a part of the tract of land called "The Quitting Solicit-  
 uated in the County aforesaid State of Md. - Beginning for Lot No. 1.  
 at a stone heretofore planted in the New Windsor & Liberty Turnpike, at  
 the end of the first line of the whole parcel, conveyed as aforesaid by  
 Wm. Duddman and wife, to the said Isaac C. Nicodemus, and running thence  
 with the second line thereof as now surveyed with the necessary allowance  
 for variation, 1. South 20 5/8° West 18 1/10 ps. to a stone planted in the New-  
 Windsor & Liberty Turnpike, then with a line of division now established,  
 2. North 87 3/4° West 65 1/10 ps. to intersect a line of Luke C. Emann's Land,  
 and bounding thereon as now surveyed with the necessary allowance  
 for variation, 3. North 5 5/8° West 18 1/10 ps. to a stone heretofore planted  
 on the 1st. line of the whole parcel conveyed as aforesaid by Wm. Duddman  
 and wife, then with said 1st. line as now surveyed with the necessary  
 allowance for variation, 4. South 87 3/4° East 74 7/10 ps. to the place of be-  
 ginning, containing 7 3/4 acres of land more or less.  
 Beginning for Lot No. 2. at a stone now planted at the end of  
 18 1/10 ps. on the second line of the whole parcel conveyed as aforesaid  
 by Wm. Duddman and wife, to the said Isaac C. Nicodemus and  
 running thence with said 2d. line as now surveyed with the necessary  
 allowance for variation, 1. South 20 5/8° West 20 9/10 ps. to a stone, then  
 with a line of division now established, 2. North 87 3/4° West 56 1/10 ps. to