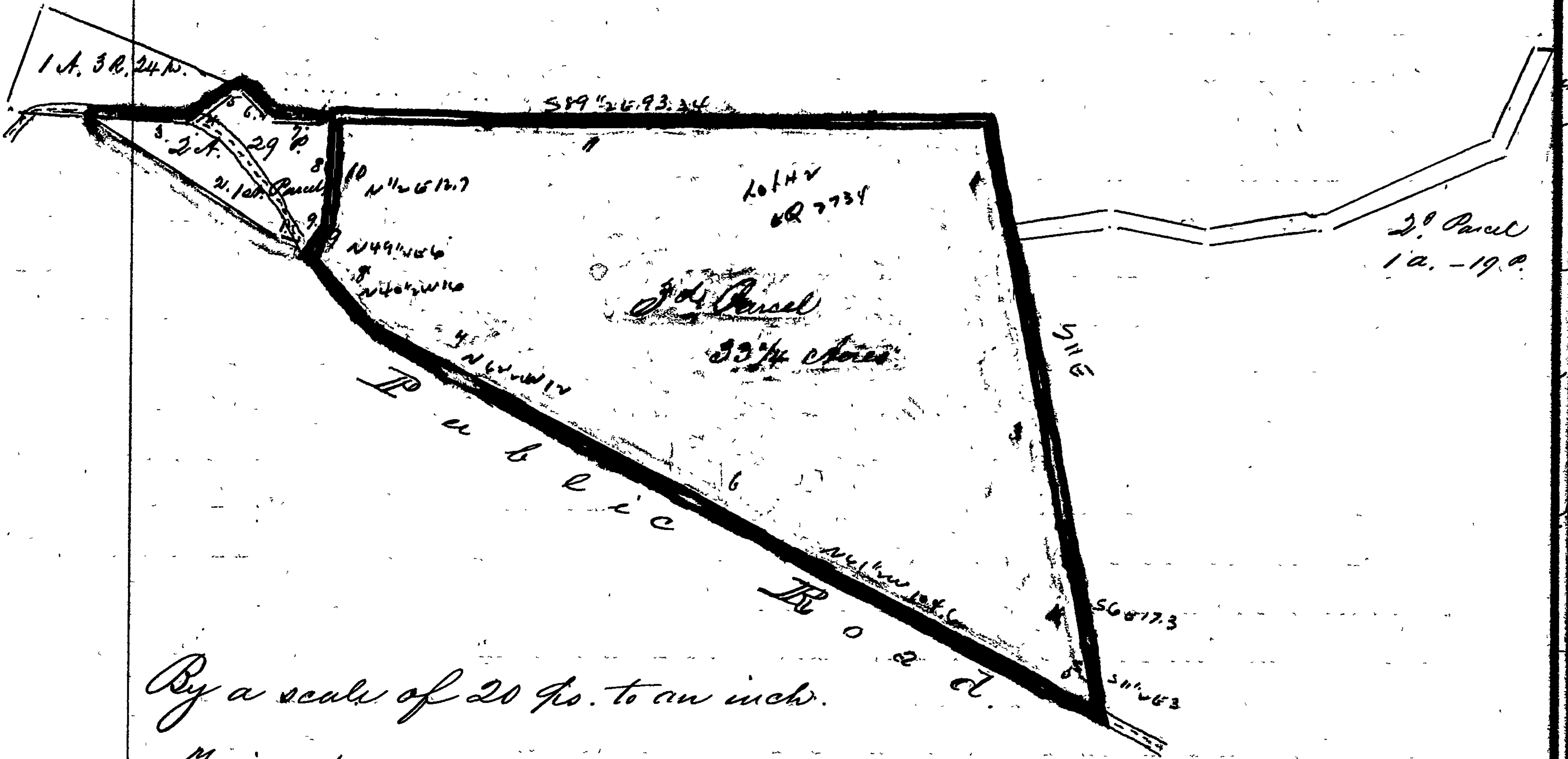


less, or  
to the Second  
1/2° East  
... (Arbitrary)  
lines thereof  
North 84°  
to 16 7/10 Pcs.  
to 63 1/2°  
1/2 Pcs. I don't  
... West 74 1/2  
to 11° West  
19 square  
... simple,  
through

the end of  
Philip  
ing them -  
toward  
line of  
2. South  
Race and  
Philip  
with six  
... to cor-  
48 1/4 Pcs.  
... North  
the South  
12° West 12  
with line  
a stone,  
to the said  
line as now  
Pcs. to the  
less, saving  
... which  
L Shrimora  
...  
sell)  
1875,  
4. R. O.  
... 29  
... 19  
... 24  
... 32



By a scale of 20 Pcs. to an inch.

Filed April 20th, 1878.

Exhibit  
"B"

I hereby certify that at the request of the heirs of Isaac C. Nicodemus, late of Frederick County, deceased, I have carefully surveyed all the following described part of the Real Estate of the late Isaac C. Nicodemus, and have laid the same out in four parcels as shown by the subjoined plat; it being the same land which was heretofore conveyed by Mrs. Duddar and wife, to Isaac C. Nicodemus, by deed bearing date on the 10th day of April 1844, for 132 1/8 acres, and is known as parts of the four contiguous tracts of land called "Chittam Castle", "The Mistake Rectified", "Pleasant Fields" and "The Recovery on Charles' Choice", situated in Frederick County, State of Maryland, — Beginning for the First Parcel at a line stone heretofore planted for the end of the sixth line of the aforesaid conveyance from Mrs. Duddar and wife to the said Isaac C. Nicodemus, and running thence with three courses thereof as now surveyed with an allowance of 2° for Variation, 1. North 12 1/2° East 64 7/10 Pcs. to a stone heretofore planted, 2. North 53 1/2° East 40 3/4 Pcs. to a stone, 3. North 74 3/4° West 110 1/4 Pcs. to a stone now planted in the bed of the New Windsor & Liberty Turnpike, then with a line of division now established, 4. South 3 1/4° West 113 7/10 Pcs. to a stone now planted on the sixth line of the aforesaid conveyance from Mrs. Duddar and wife, then with said 6th line, allowing for variation as before, South 89° East 65 7/10 Pcs. to the place of beginning, containing 57 1/4 acres and 17 square perches of land more or less, — Beginning for the Second Parcel at a stone heretofore planted at the root of a hickory tree for the end of the first line of the aforesaid conveyance from Mrs. Duddar and wife to the said Isaac C. Nicodemus, and running thence with five courses thereof as now surveyed with an allowance of 2° for variation, 1. North 75 1/2° East 24 7/10 Pcs., 2. North 88 1/4° East 15 1/4 Pcs., 3. North 89 1/2° East 26 1/10 Pcs., 4. North 1 1/2° East 1 7/10 Pcs., 5. South 89° East 16 1/2 Pcs. to a stone now planted