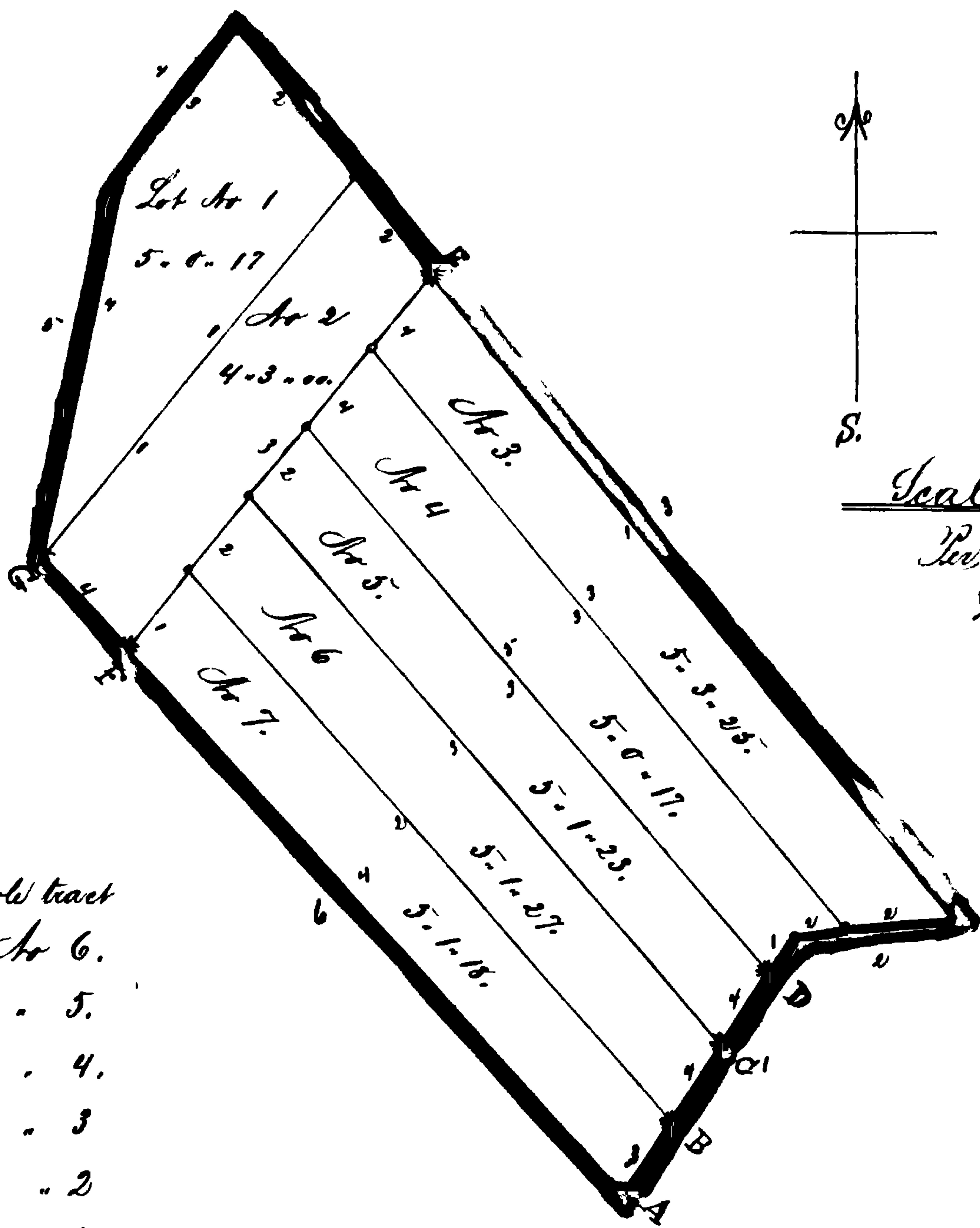


Exhibit D
to Report
of Surveyor



A	Beginning whole tract
B	Lot No. 6.
C	" " " 5.
D	" " " 4.
E	" " " 3.
G	" " " 2.
G.	" " " 1.
F.	" " " 7.

A	B	P
5. 0. 17		
4. 3. 00		
5. 3. 20		
5. 0. 17		
5. 1. 33		
5. 1. 27		
<u>5. 2. 18</u>		
<u>37. 1. 07</u>		

Plot and divisions of that part Mountain Land of the Estate of Henry Shafer deceased lying in Frederick County near the White Post and be the same a part or parts of any tract or tracts whatsoever. Beginning at a stone and pile of stones standing at the beginning of the lead from Frederick Rudy and wife to Jacob Rudy dated the 9th day of February 1853 for 116 1/2 Acres of Land part of the "2nd Survey on Black Hill's Acorn" and running thence with the lines of said deed two courses and distances correcting the same for variation in order to agree with the former location of said line North 32 1/2° East 35 1/2 perches to a planted stone North 82 1/2° East 18 perches to a planted stake then running up the mountain North 40 1/2° West 131 7/10 perches to a large stone in a pile of stones then South 37° West 22 perches to a stone and pile of stones South 9 3/4° West 44 perches to a stone and pile of stones where the lands of Jacob Rudy and others unite herewith and thence with said Rudy's land South 44° East 101 perches to the place of beginning containing 37 Acres 1 Rod and Seven Square perches of Land which I have carefully divided into Seven Lots as shown by the within plat. Beginning for Lot No. 1 at the end of the 3th line of the whole tract and running thence across the same North 38° East 56 perches to intersect the 2nd line of the whole tract and with it North 40 1/2° West 22 7/10 perches to the end of said line thence with the 4th & 5th lines thereof in succession South 37° West 22 perches South 9 3/4° West 44 perches to the beginning containing 3 Acres and 17 Square perches of Land. Beginning for Lot No. 2 at the end of the 3th line of the whole tract and thence with the 1st line of Lot No. 1 North 38° East 56 perches to intersect the 2nd line of the whole tract and with said 2nd line reversed South 40 1/2° East 14 7/10 perches then across the whole tract binding on the West limits of Lots No. 3 4 5 6 & 7 South 38° West 33 9/10 perches to intersect the closing line of the whole tract and with it reversed North 44°