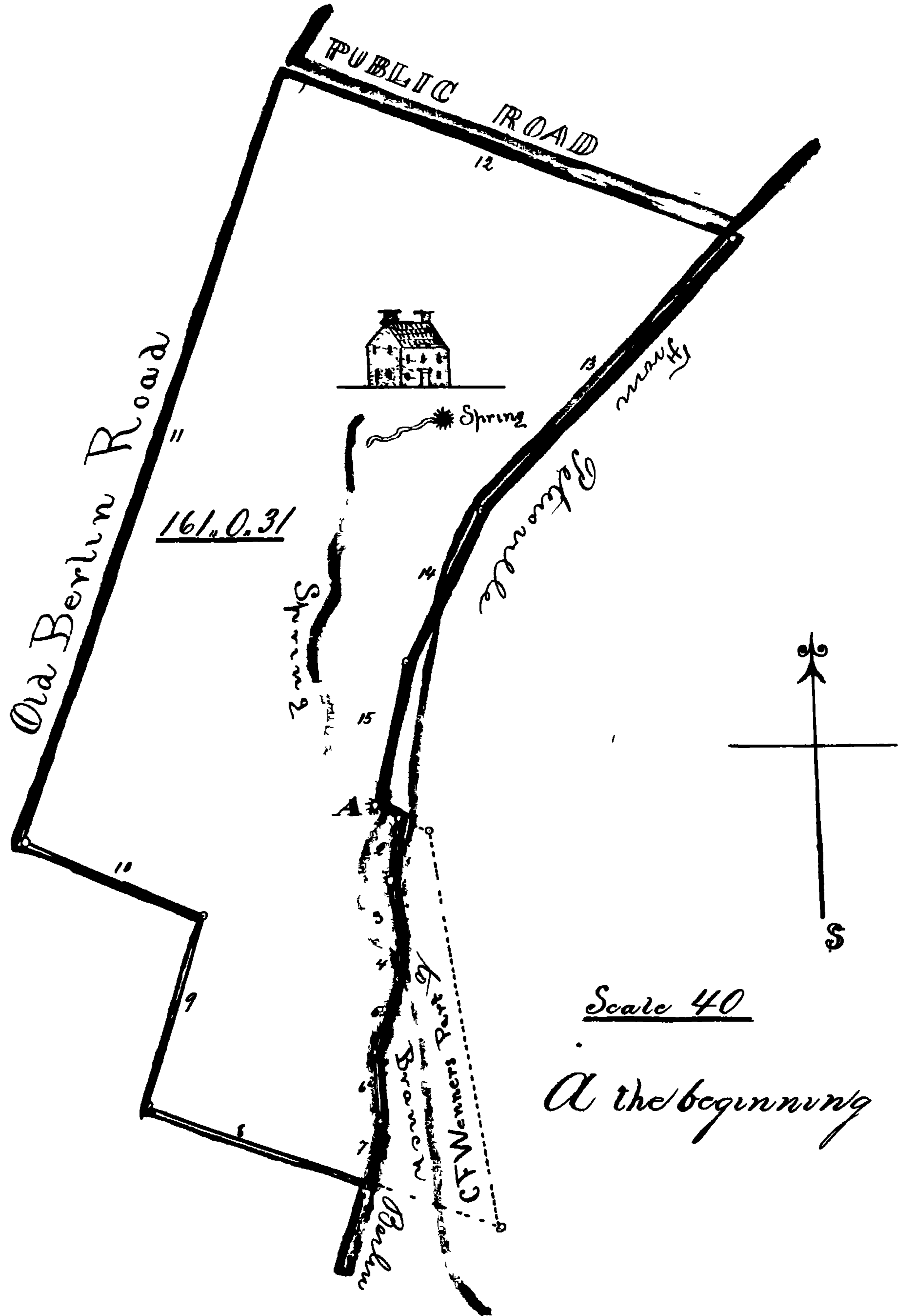


of beginning containing 8³ Acres 1 Rod and 9 Square perches of Land

PLAT. No 2



Scale 40
At the beginning

Embracing parts of Lots No 19 & 20 parts of a tract of Land called "The Resurrection Maryland and being the remaining portion of that tract known as "Philpott Farm. Beginning for the same at a stone formerly planted and standing at the end of the South 13° West 40 perches line of the whole farm as formerly conveyed by John R Brooke and wife to George Sleser by deed dated on or about the 7th day of June 1841 for 173 Acres 3 Rods and 20 Square perches and running thence with the 5th line thereof correcting same for variation South 64¹/₂° East 7¹/₁₀₀ perches to the middle of the Public Road leading from the Episcopal Parsonage to Berlin it being the beginning of that part of said "Philpott Farm" which was heretofore conveyed to Charles S Wanner for 141 Acres and 29 Square Perches and running thence with the lines thereof reversed on and in the middle of said road 6 courses and distances South 13° West 10⁴/₁₀₀ perches South 7° East 15⁸/₁₀₀ perches South 3¹/₄° West 10⁵/₁₀₀ perches South 30° West 33⁴/₁₀₀ perches South 1° East 27 perches South 18¹/₄° West 16⁸/₁₀₀ perches intersecting the 7th or North 70¹/₄° West 104 perches line of the whole farm aforesaid it being the end of the 32¹/₄ or North 8¹/₄° East 7¹/₁₀₀ perches line of Lot No 2 a division of the late Joseph Maltman's Land now possessed by Mortimer S Wanner and thence with the lines of said Lot No 2 three courses

Done